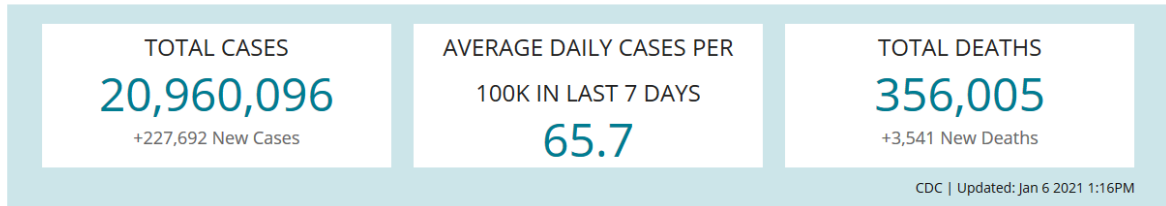


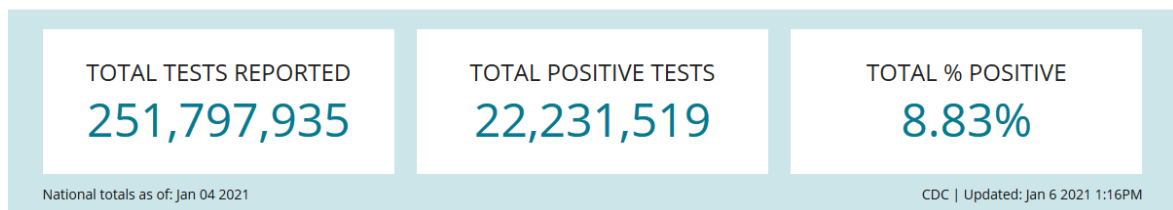
## **COVID-19 WEEKLY REPORT 1/7/21**

### United States COVID-19 Cases and Deaths by State

Reported to the CDC since January 21, 2020



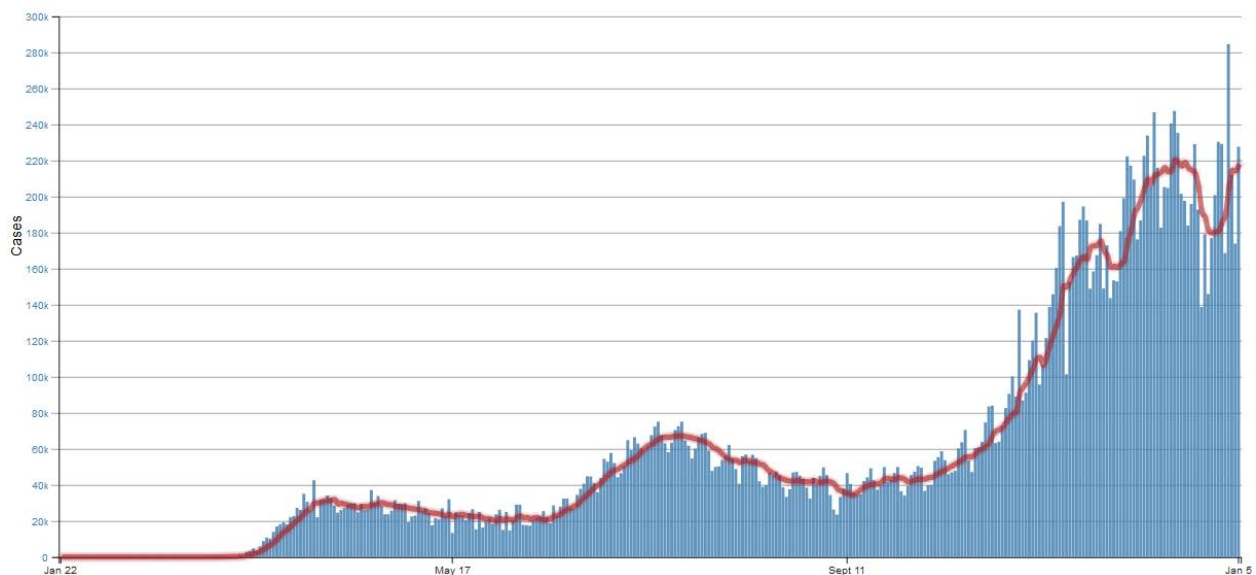
### United States Laboratory Testing



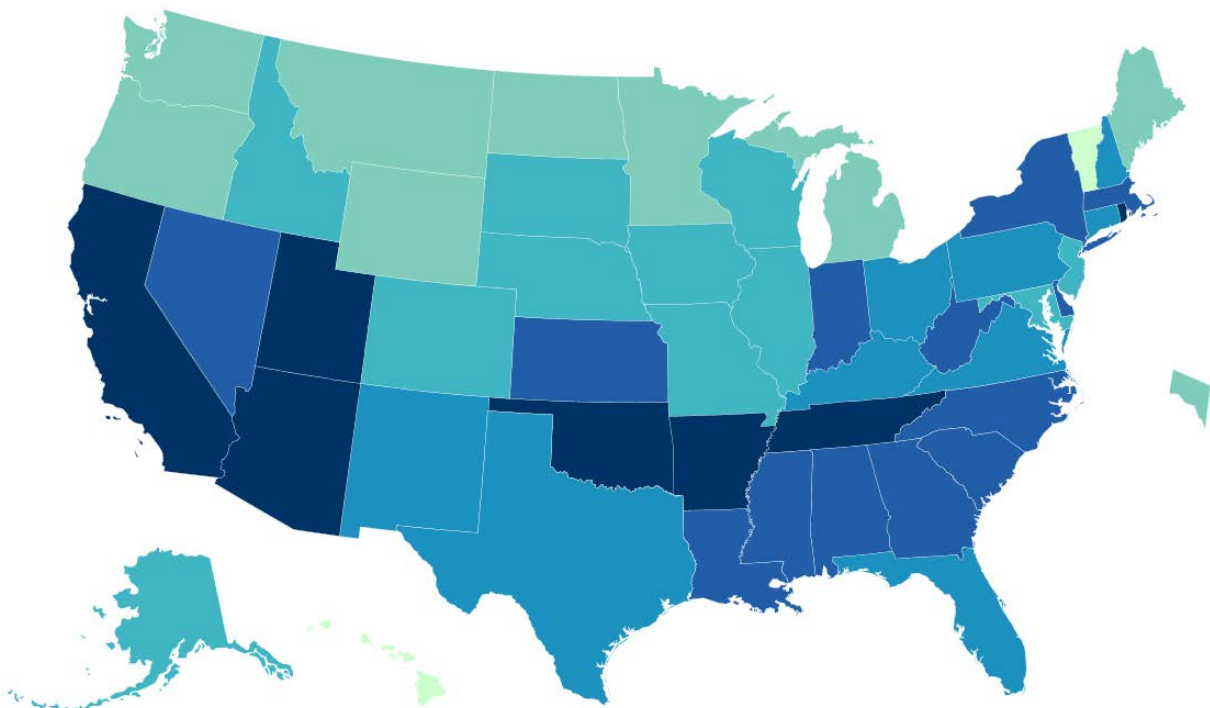
### **DAILY TRENDS IN NUMBER OF CASES:**

**Current Average: 227,692; 7-day moving avg: 218,065**

Daily Trends in Number of COVID-19 Cases in the United States Reported to CDC



DISTRIBUTION PER CASE RATE REPORTED LAST 7 DAYS



Territories

AS	FSM	GU	MP	PR	PW	RMI	VI
----	-----	----	----	----	----	-----	----

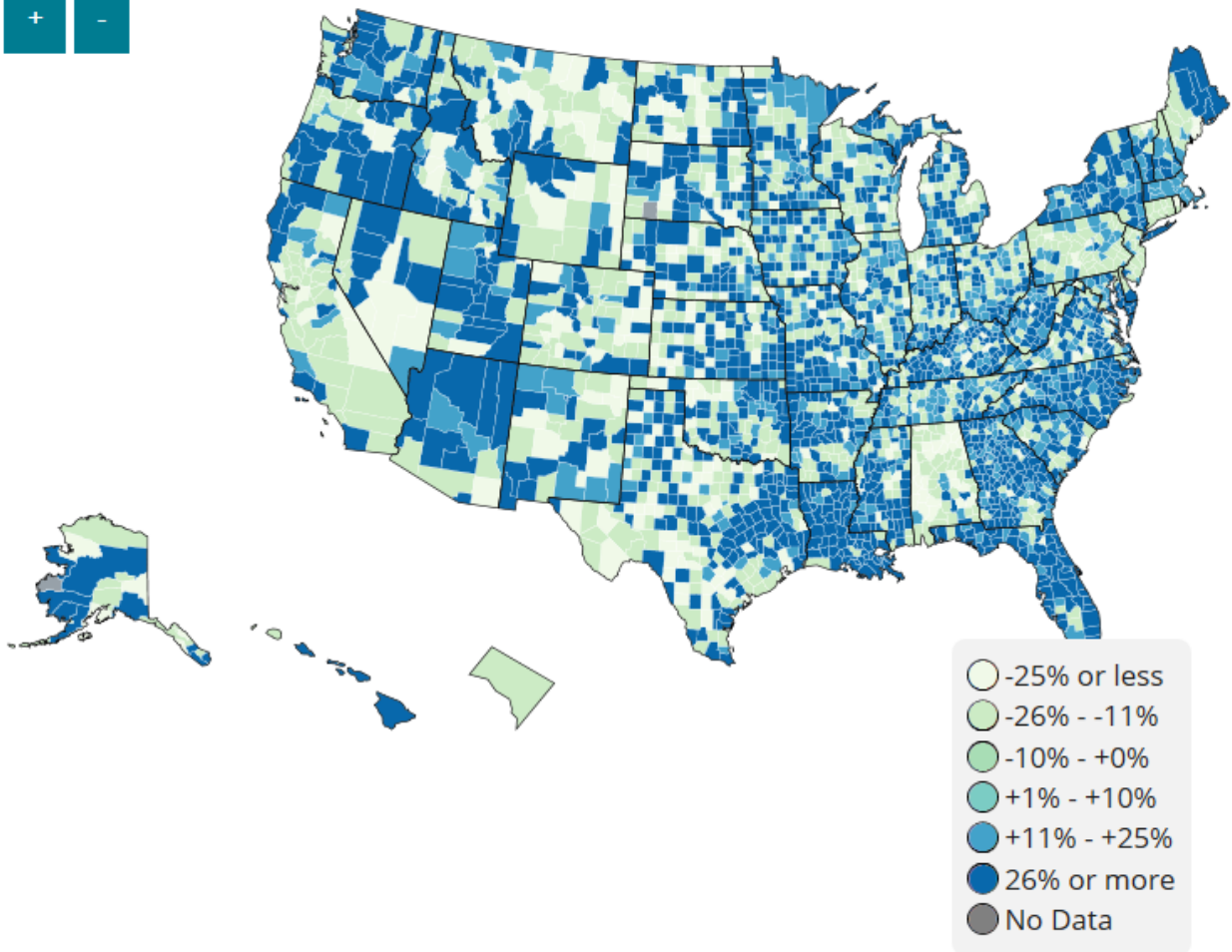
Average Daily Cases per 100,000 in Last 7 Days



State/Territory ↕	Average Daily Cases per 100k in Last 7 Days ↕
Arizona	118.3
California	95.9
Rhode Island	95.3
Tennessee	94.3
Arkansas	93
Utah	87.5
Oklahoma	86.6
West Virginia	82.8
New York*	82.6
Georgia	81.4
Alabama	81
South Carolina	76.2
Kansas	74.8
Mississippi	72.9
Delaware	72.1
Nevada	71.1
Indiana	69.6
North Carolina	69.6
Massachusetts	68.8
Louisiana	68.1
Florida	65
Ohio	64.1
Texas	62.7
Kentucky	61.9
Connecticut	60.1
New York City*	59
New Mexico	58.8
Pennsylvania	57.5

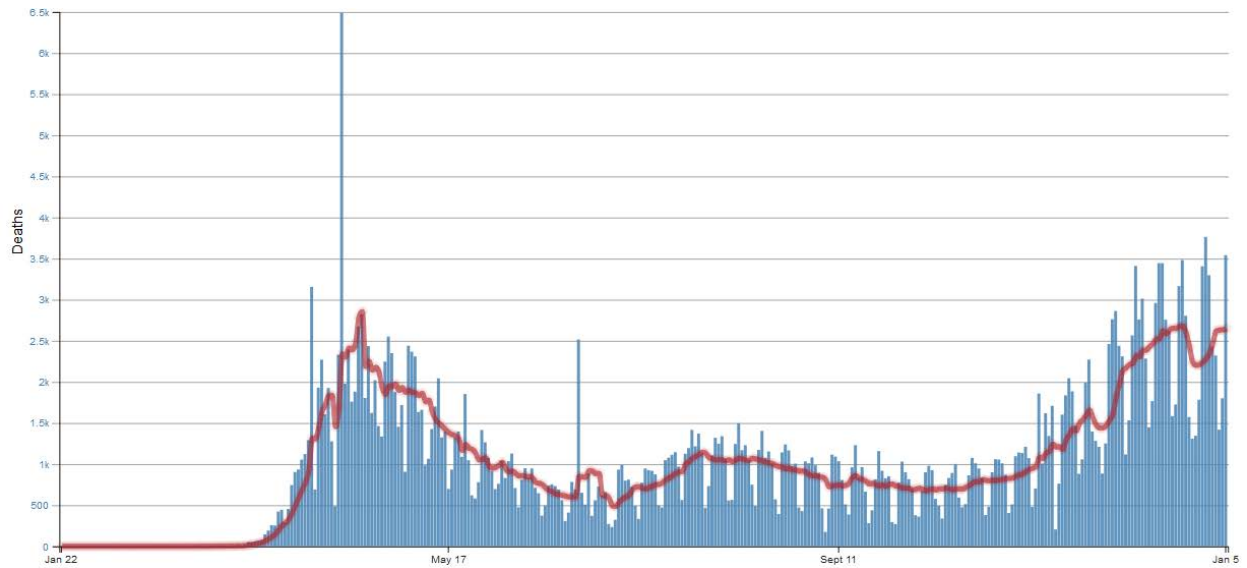
New Hampshire	55.6
Virginia	55.2
Nebraska	53.6
New Jersey	51.5
Idaho	50.5
Illinois	49.3
Alaska	47.4
South Dakota	47.1
Wisconsin	46.2
Colorado	45.9
Iowa	45.6
Maryland	45.4
Missouri	45.4
Wyoming	40.6
Montana	39.5
Maine	38.2
Minnesota	35.9
Washington	33.6
District of Columbia	33
Michigan	32.6
North Dakota	30.6
Oregon	28
Vermont	19.1
Puerto Rico	16.7
Virgin Islands	10
Hawaii	9.8
Guam	4.4

## PERCENT CHANGE IN CASES FROM PREVIOUS 7 DAYS

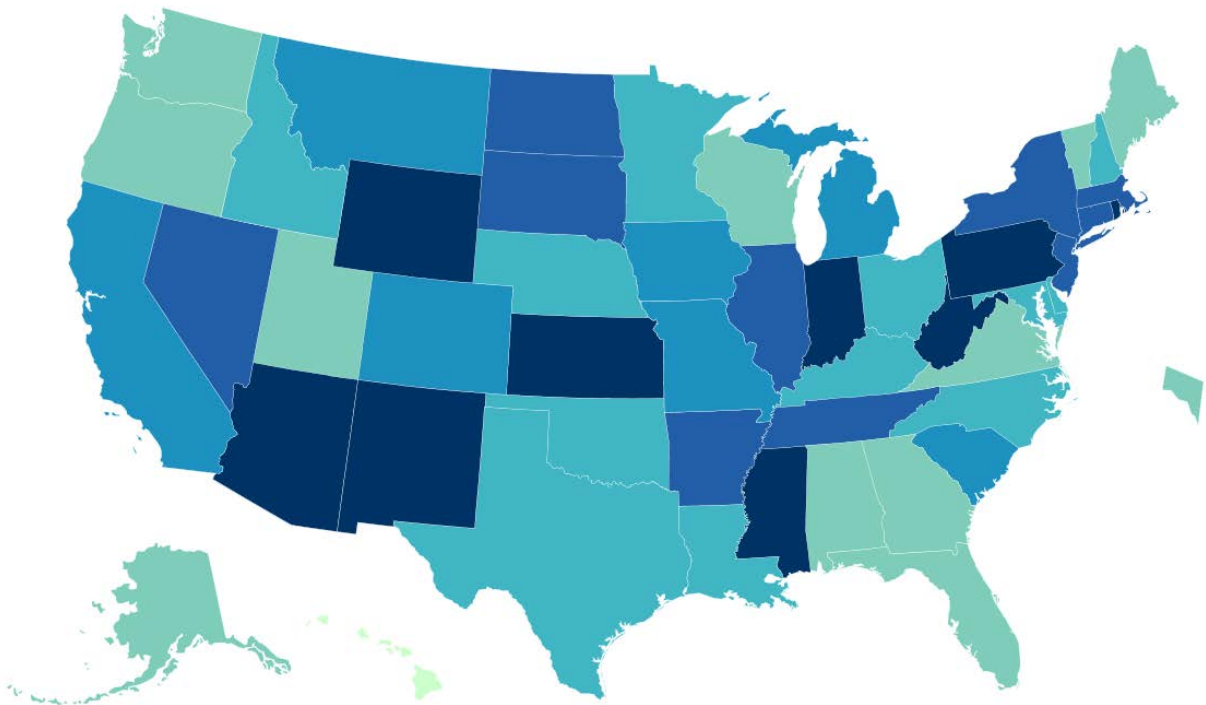


## DAILY TRENDS IN NUMBER OF DEATHS

**Current Average: 3,541; 7-day Moving Average: 2,652**



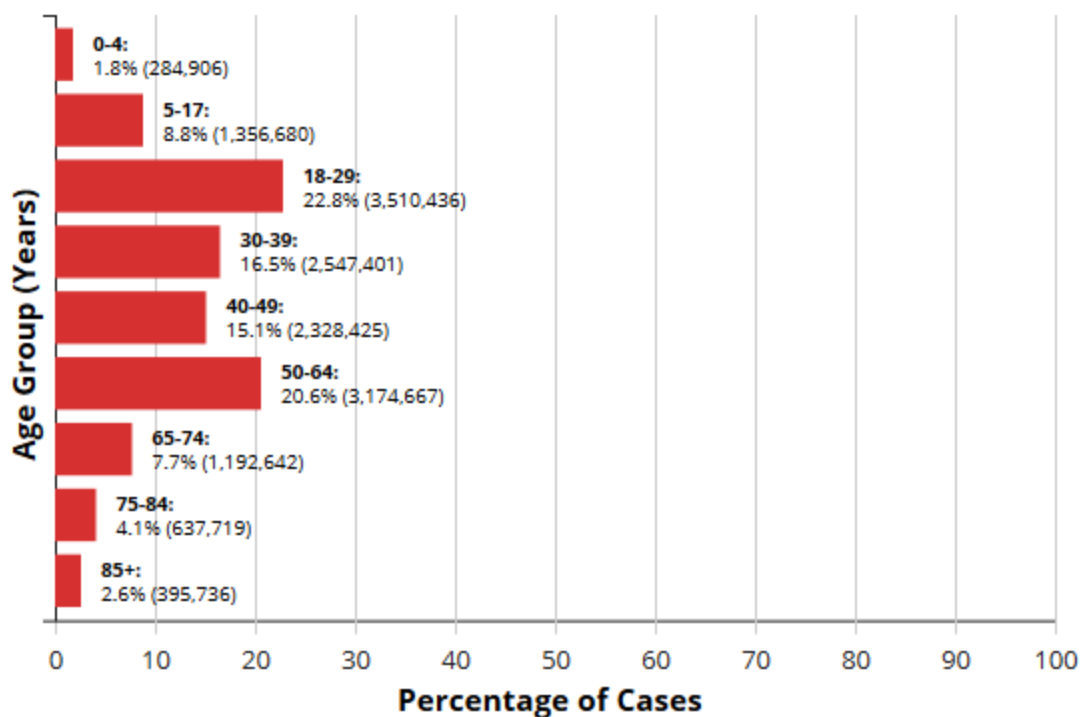
### Death Rate Reported to the CDC Last 7 Days



## Cases by Age Group:

[Download](#)

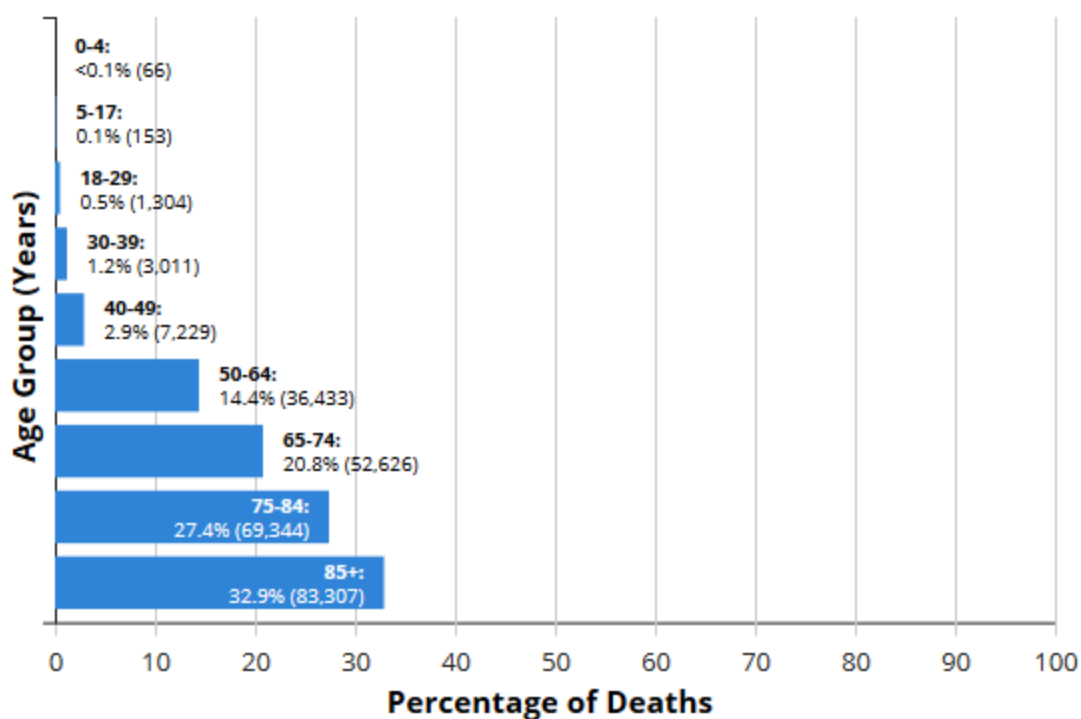
Data from 15,518,841 cases. Age group was available for 15,428,612 (99%) cases.



## Deaths by Age Group:

[Download](#)

Data from 253,497 deaths. Age group was available for 253,473 (99%) deaths.



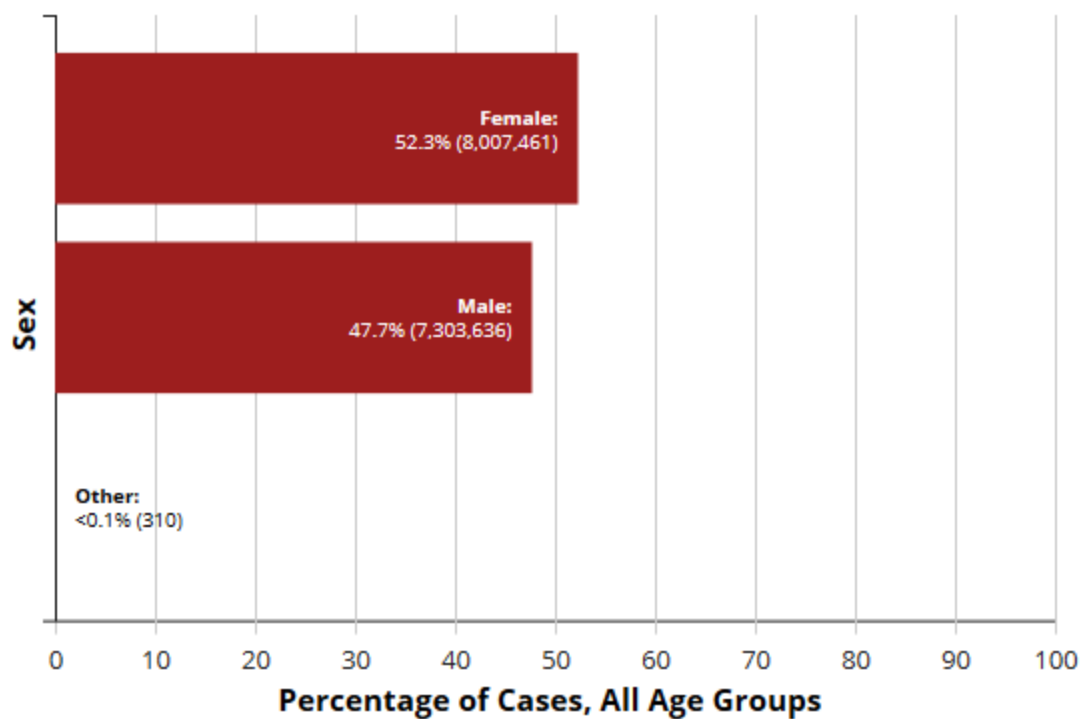


## Cases by Sex:

[Download](#) ▼

Data from 15,518,841 cases. Sex was available for 15,311,407 (98%) cases.

All Age Groups ▼

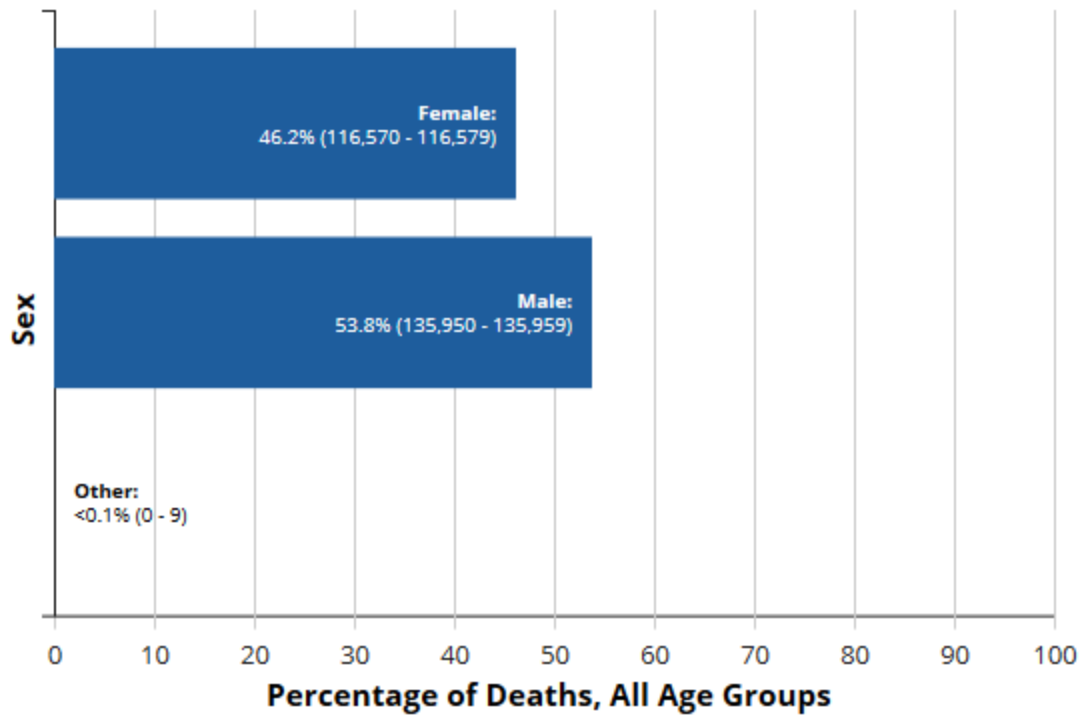


## Deaths by Sex:

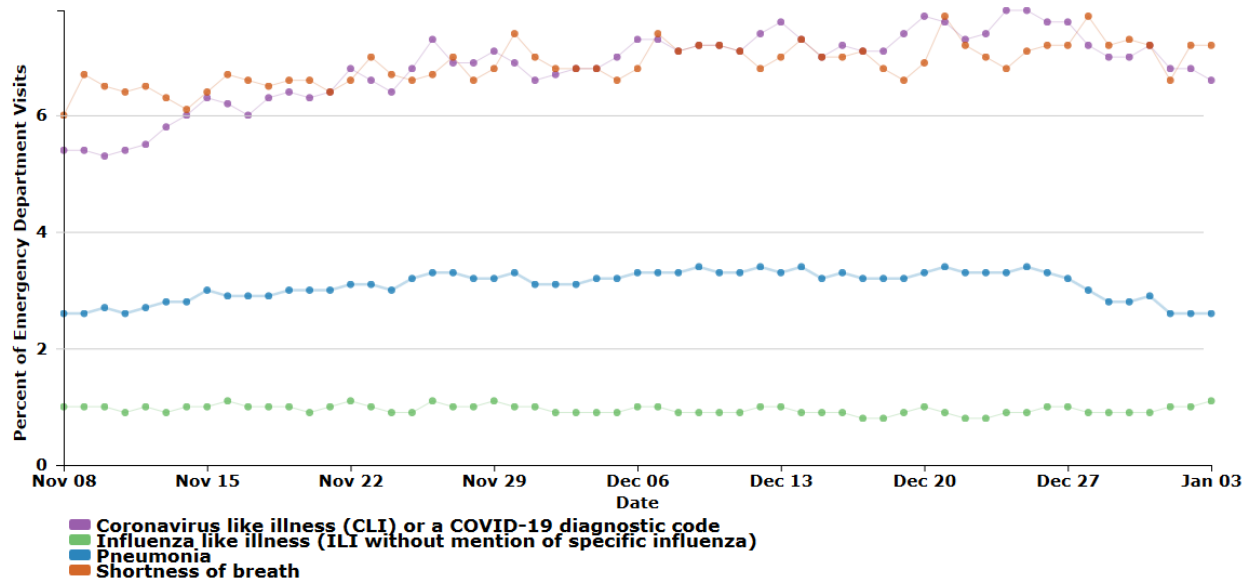
[Download](#) ▼

Data from 253,497 deaths. Sex was available for 252,540 (99%) deaths.

All Age Groups ▼



## Percentage of ED visits by syndrome in United States: COVID-19-Like Illness, Shortness of Breath, Pneumonia, and Influenza-Like Illness



## CASES AND DEATHS AMONG HEALTHCARE PERSONNEL



## PREGNANT WOMEN WITH COVID-19



Overall US COVID-19 Vaccine Distribution and Administration

Total Doses Distributed	Total Number of People Initiating Vaccination (1 <sup>st</sup> Dose Received)
17,288,950	5,306,797
CDC   Updated: Jan 06 2021 As of 9:00am ET	

Federal Pharmacy Partnership for Long-Term Care Program (Subset of Overall Numbers)

Doses Distributed for Use in Long-Term Care Facilities	Number of People Initiating Vaccination (1 <sup>st</sup> Dose Received) in Long-Term Care Facilities
3,416,875	511,635
CDC   Updated: Jan 06 2021 As of 9:00am ET	

**Overall**   Cases   Deaths

**1,303**  
Affected Facilities

**395,094**  
Total Cases

**323,022**  
Total Resident Cases

**72,072**  
Total Staff Cases

**1,993**  
Total Deaths

**1,880**  
Total Resident Deaths

**113**  
Total Staff Deaths

**Total Number of Cases**   A: 0-100   B: 101-1,000   C: 1,001-5,000   D: 5,001-9,999   E: 10,000+

Last updated: 07-Jan-21

## CT DPH WEBSITE

State Summary

### Connecticut COVID-19 Summary

Summary for the most recent day of reporting. Includes confirmed plus probable cases; probable cases include persons with positive antigen results

Measure	Total	ChangeDirection	Change
COVID-19 Cases (confirmed and probable)	199,454	+	2,486
COVID-19 Tests Reported (molecular and antigen)	4,517,072	+	29,080
Daily Test Positivity*			8.55%
Patients Currently Hospitalized with COVID-19	1,139	-	10
COVID-19-Associated Deaths	6,230	+	38

#### Connecticut is currently in Phase 1a. Those eligible for vaccine are:

**Healthcare Personnel:** All paid and unpaid persons serving in healthcare settings who have the potential for direct or indirect exposure to patients of infectious materials.

**Long Term Care Facility Residents:** Adults who reside in facilities that provide a range of services, including medical and personal care, to persons who are unable to live independently.

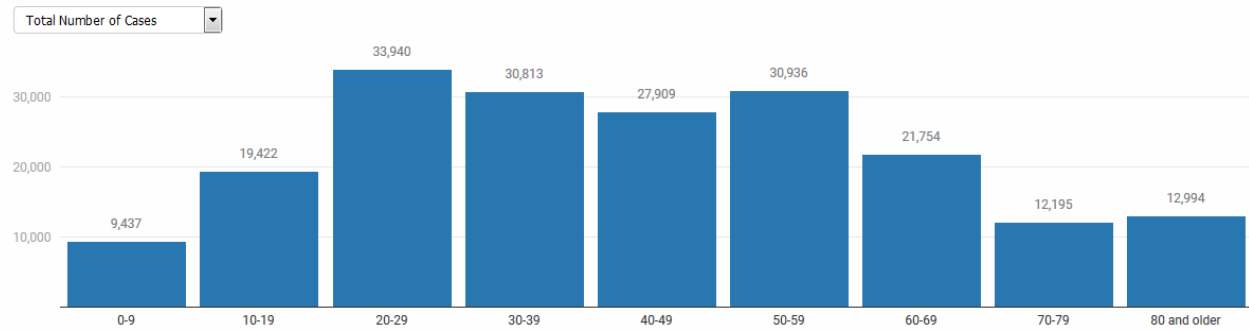
**First Responders at risk of exposure to COVID-19** through their response to medical emergencies such as Emergency Medical Technicians, Police, and Fire.

*Phase 1a does not include healthcare personnel that do not have the potential for direct or indirect exposure to patients or infectious materials. For example, if you are providing telehealth services and do not currently work in a healthcare setting providing in person care, you are not be eligible for vaccine in phase 1a.*

NURSING HOME REPORT (BY FACILITY) CAN BE FOUND HERE:

<https://portal.ct.gov/-/media/Office-of-the-Governor/News/20201231-Nursing-Homes-with-COVID-19.pdf>

## Number of COVID-19 Cases, Associated Deaths, and Rates per 100,000 by Age Groups

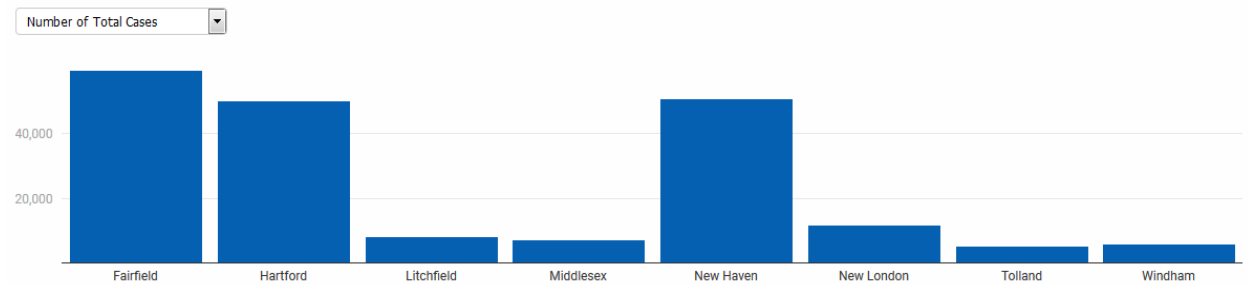


Total COVID-19 cases and associated deaths include confirmed plus probable.

## County Chart

### COVID-19 Cases, Rate per 100,000, Patients Currently Hospitalized, and Associated Deaths by County

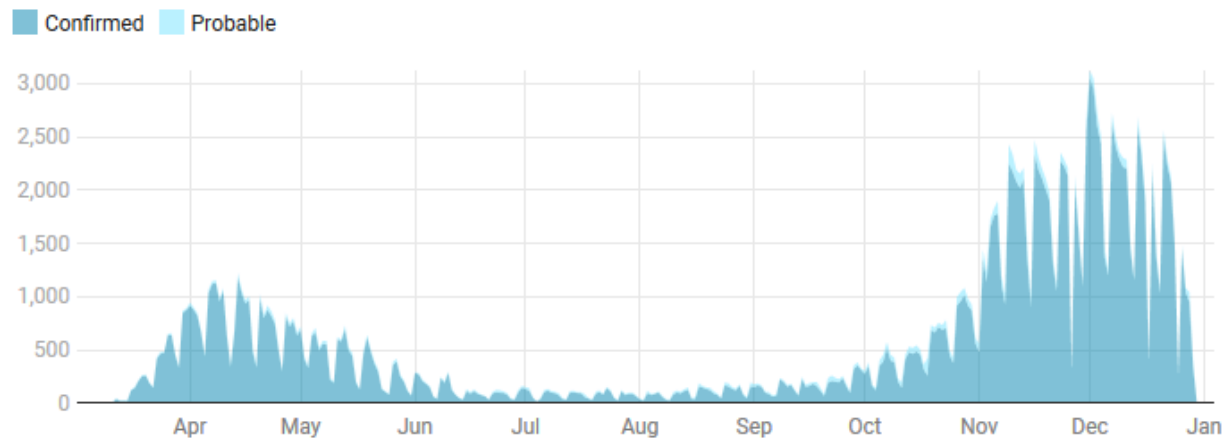
Cases and deaths are cumulative over time



COVID-19 cases, rate per 100,000, and associated deaths are by county of residence. Hospitalization data are collected by CT Hospital Association and represent the number of patients currently hospitalized by location of the hospital and not the patient residence.

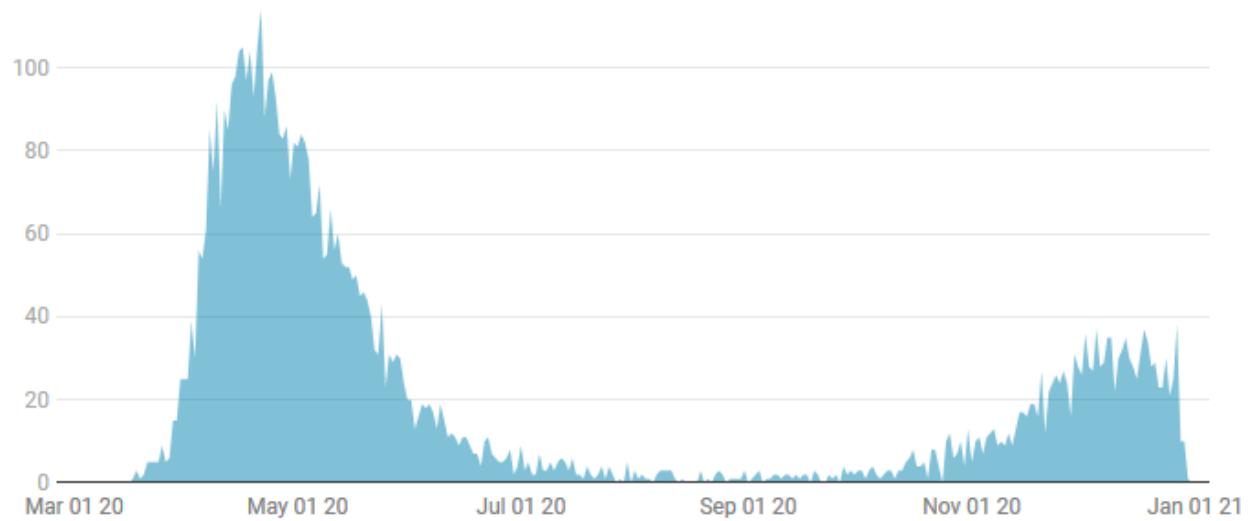
## Number of Confirmed and Probable COVID-19 Cases by Date

Test results may be reported several days after the result. Data are incomplete for the most recent days. Data from previous dates are routinely updated.



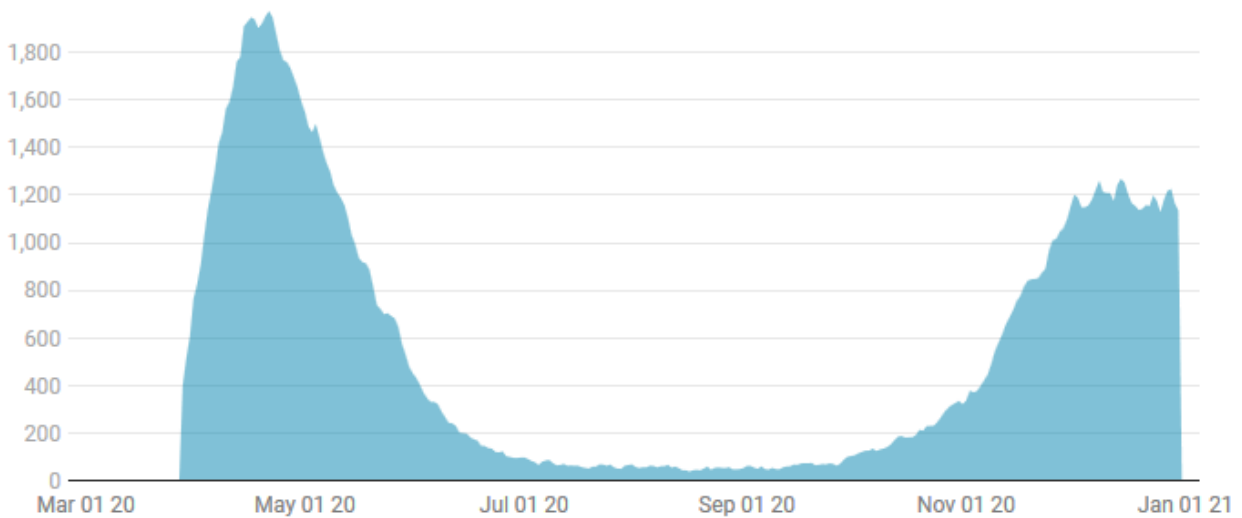
Date of Specimen Collection (confirmed) or Symptom Onset (probable)

## Number of COVID-19 Associated Deaths by Date of Death



*All data are preliminary and subject to change. Data from previous dates are routinely updated.*

## Number of Patients Hospitalized with COVID-19 by Date

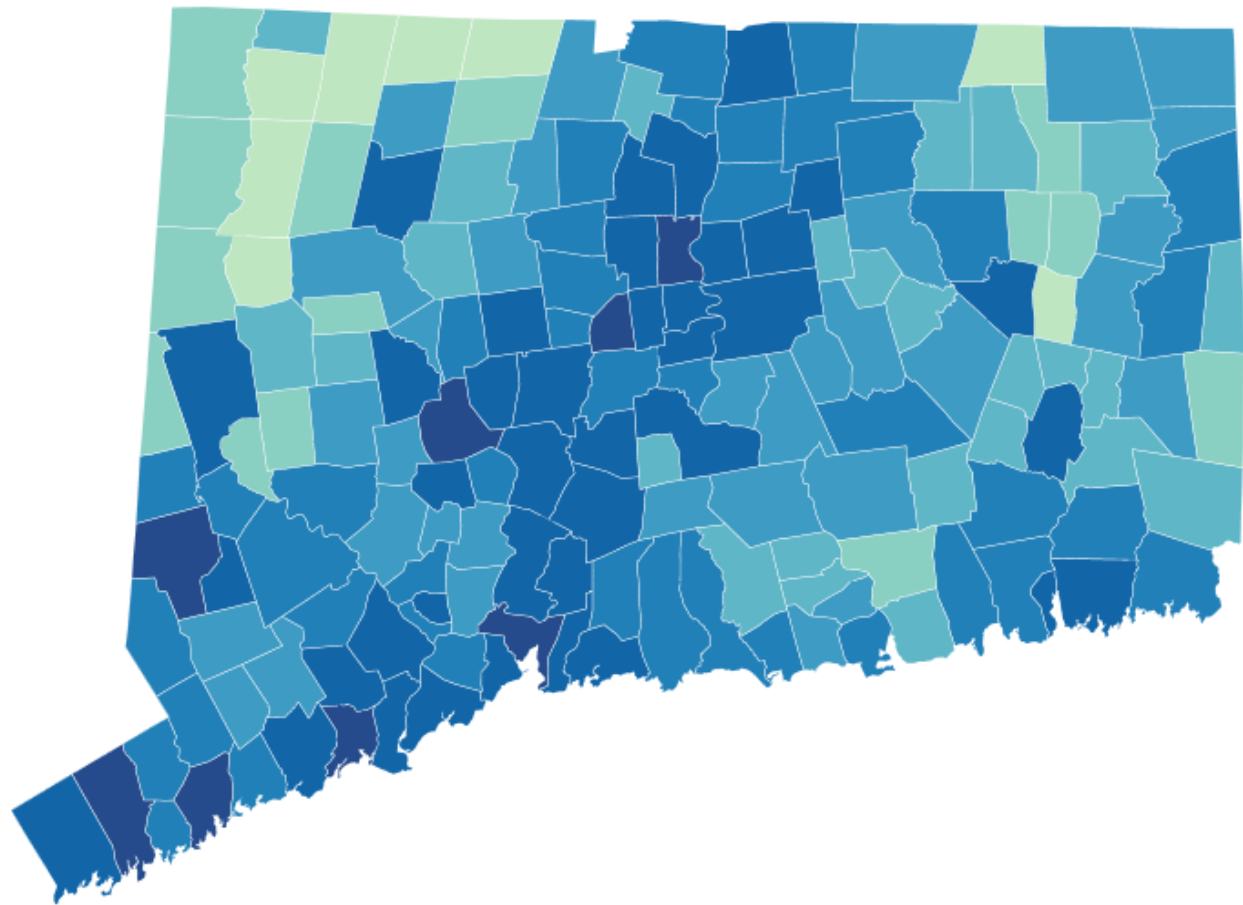


*Data from previous dates are routinely updated.*



## Cumulative Number of COVID-19 Cases by Town

Click Town for Additional Information



Total Number of Cases

0 - 5   6 - 50   51 - 100   101 - 200   201 - 500   501 - 1,000   1,001 - 5,000   >5,000

**Average Daily Rate of COVID-19 Cases Among Persons Living in Community Settings per 100,000 Population By Town**

