

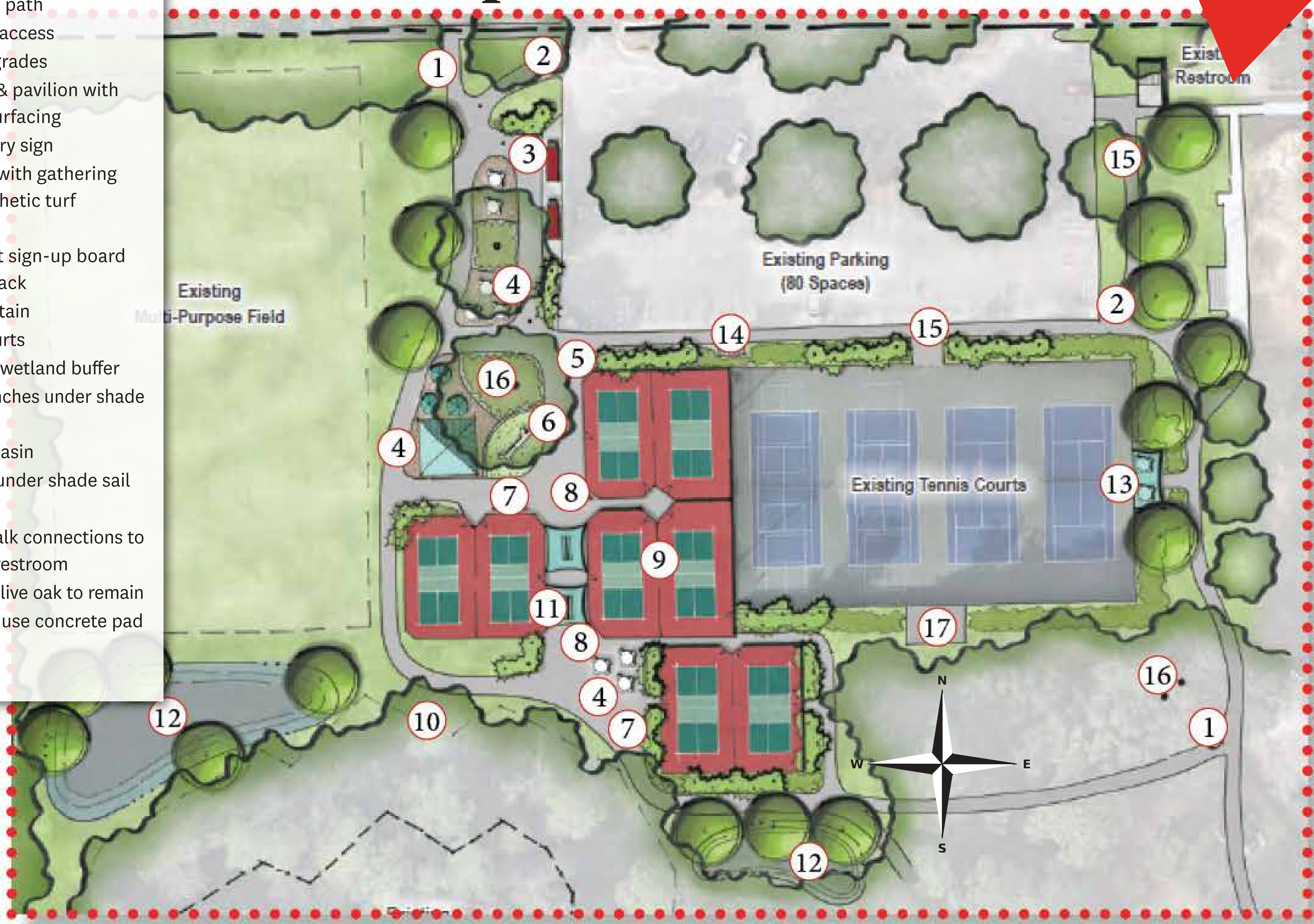
Anticipated construction timelines

- Racquetball court demolition: week of July 1, 2024
- Park Renovations: January 2025 - Summer 2025

Legend

1. 12' wide multi-purpose trail & maintenance path
2. Maintenance access
3. Electrical upgrades
4. Seating area & pavilion with accessible surfacing
5. Pickleball entry sign
6. Seating area with gathering bench & synthetic turf surfacing
7. Pickball court sign-up board and paddle rack
8. Drinking fountain
9. Pickleball courts
10. 50' minimum wetland buffer
11. Spectator benches under shade sails
12. Stormwater basin
13. Seating area under shade sail
14. Bike racks
15. Accessible walk connections to parking and restroom
16. Existing large live oak to remain
17. 20'x30' multi-use concrete pad

Improvement area details:



Upgrades coming:

- Removal of the existing racquetball courts
- Addition of eight dedicated pickleball courts
- Addition of seating areas with a pavilion and site furnishings
- Addition of a pedestrian entrance from the Northeast 16th Ave. crosswalk
- Purchase and installation of a community bulletin board/kiosk
- New benches and entrance improvements at both dog parks
- Re-routing of the multi-purpose trail for ADA accessibility
- Renovating and enlarging the restrooms
- Lighting the parking lot and the main north-south trail
- Upgrades to the landscape and code-required modifications to the park's stormwater management basins