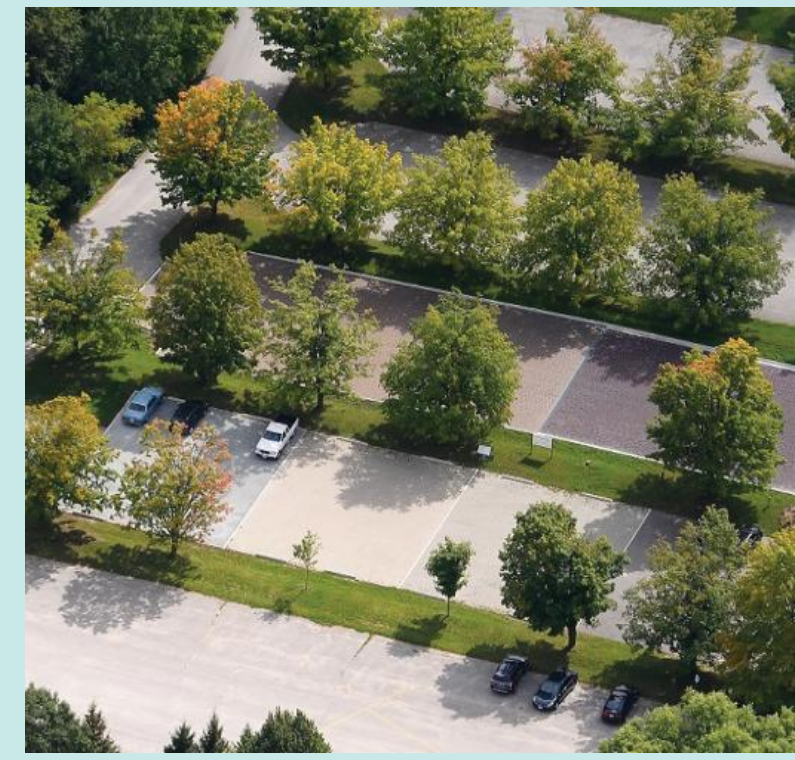


A. TRAILHEAD



- Existing picnic pavilion to remain
- Existing educational kiosk moved to more central, visible location
- Bike racks moved to main access route
- New restroom
- New split-rail fencing along restoration areas to the north and west

B. TRAILHEAD PARKING



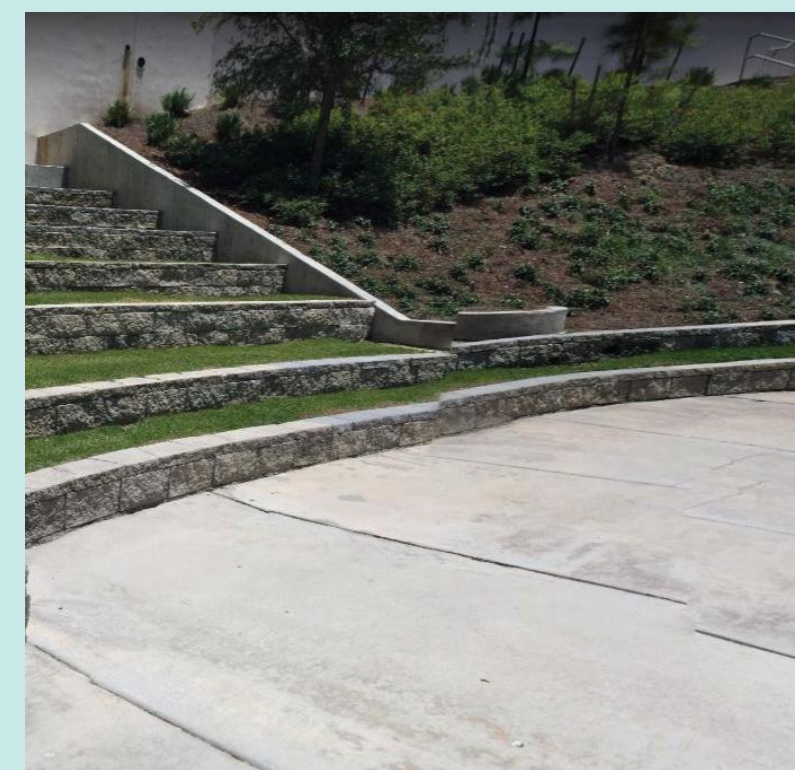
- Existing paved parking to remain
- Existing dry stormwater area to remain
- Existing equestrian parking re-purposed to new paved parking and overflow parking
- New parking along main loop road, shared between trailhead and Waterworks uses
- New trail along parking to trailhead and Waterworks area
- New plantings as required

C. PARK TRANSITION / PICNIC



- New loop trail through this picnic/passive use area to connect parking, use area and those improved areas along the back of Waterworks use areas
- New picnic pavilion and tables
- Educational signs
- Native plantings

D. WATERWORKS EXTERIOR USE AREAS



- New walk and handrail to replace existing along springs run edge
- New minor plaza space at spring head for gathering and educational use
- New retaining terrace walls to stabilize slope and prevent erosion. Bottom-most terrace wall along plaza edge to double as seating.
- Native plantings between other terrace walls
- Educational signage

VISION FOR REDEVELOPMENT - Proposed uses should...

- Be resource-based, considering the historical resources of the Waterworks building, the natural resources of the Hawthorne Trail trailhead, and the environmentally sensitive spring run at the Waterworks Building.
- Create a positive economic and community impact for park users, surrounding neighborhoods, special event or special use groups, and the City of Gainesville at large.
- Encourage education through various communication approaches focusing on the site's unique points of interest. Potential topics include the cultural history of this area, the importance of the springs run ecosystem, the historical significance of the Waterworks Building, and surrounding natural lands management and restoration.
- Offer multi-purpose areas that are flexible and of the appropriate scale to support both typical daily use and special events.
- Celebrate the existing Waterworks Building's historical architectural character through proposed pavilion, sign, and other vertical element design.
- Improve and maintain existing City assets such as the Trailhead facility and Waterworks Building.
- Consider safety in park elements by creating clear view lines and view-sheds, adding lighting where appropriate to proposed uses and adjacent natural areas, using trail and parking design best practices, and increasing positive use.

BOULWARE SPRINGS NATURE PARK & HISTORIC WATER WORKS BUILDING RENOVATIONS

Conceptual Master Plan - Draft for Review

December 22, 2022

E. WATERWORKS ENTRY

- New minor plaza at Waterworks Building entry to welcome and provide accessible, multi-purpose space for events
- Accessible walks to entry plaza and front entry of Waterworks building
- Educational signs



F. WATERWORKS DROP-OFF & PARKING

- New drop off for easy access to Waterworks Building entry
- New paved parking
- New stormwater treatment for paved parking
- New trail and walk connections to Waterworks Building entry plaza and entry



G. WATERWORKS APPROACH

- New paved accessible walk from multi-use parking
- New retaining walls to support existing grade, prevent erosion, and avoid drainage issues into Waterworks Building



H. MULTI-USE PARKING

- Existing unpaved parking to remain
- New stabilized grass parking for Waterworks Building, event, or Trailhead overflow parking in general location of previous care-givers homestead and positioned so as to not impact existing Live Oaks
- Native plantings to buffer and define parking



JonesEdmunds

MANLEY DESIGN, LLC