



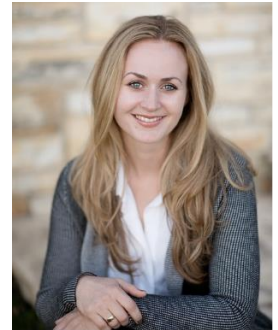
UCSF Health Medical Directors



Nina Botto, MD

Assistant Professor, Dermatology
Medical Co-Director of Dermatology Services

Nina joined the UCSF faculty in 2013 and spends her time blending her clinical work in dermatology with academic interests in patch testing and contact dermatitis. Nina lives in Marin with her husband, two kids, and puppy. She loves a good hike and a turn on the karaoke mic.



Madeline Deutsch, MD, MPH

Associate Professor, Clinical Family & Community Medicine
Medical Director of Transgender Care Strategy and Integration

Maddie has worked in the field of transgender health since 2006 and has been with UCSF since 2013. She splits her time between clinical care and research in transgender and sexual minority health. She lives with her wife and young daughter in Bernal Heights, and is often daydreaming of long distance motorcycle travels.



James Hardy, MD

Assistant Clinical Professor of Emergency Medicine
Medical Director of UCSF-GoHealth Urgent Care Affiliation
Director of Case Review, Parnassus Emergency Department

Jim came to UCSF as a half-time clinical faculty member in 2007, joining as a full-time member 3 years ago. He has worked extensively in community emergency departments and brings this experience to the affiliation with GoHealth. His academic interests include behavioral emergencies, homelessness, workplace violence, and geriatrics. He is originally from Seattle and lives in the East Bay with his wife (a UCSF ED doc) and 2 kids.



Sabrina Kidd, MD, FACS, FASCRS

Chief Medical Officer, Sonoma Valley Hospital
Medical Director of Sonoma Valley Hospital-UCSF Affiliation

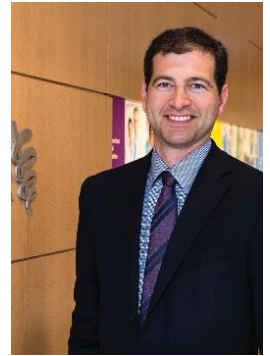
Sabrina is the Chief Medical Officer for Sonoma Valley Hospital, the SVH-UCSF Medical Director, and is a dual board certified colorectal and general surgeon. Her practice includes the surgical treatment of colorectal cancer, benign colon and rectal disorders, anorectal disorders, colonoscopy, gallbladder disease, and much more. Outside of the operating room, she enjoys running, hiking, and tending to her garden, goats, sheep, chickens, and more on her small Sonoma County ranch.



Jack Resneck Jr., MD

Professor and Vice Chair, Dermatology
Core Faculty, Philip R. Lee Institute for Health Policy Studies
Medical Co-Director of Dermatology Services

Jack arrived at UCSF for medical school in 1993 and has stuck around ever since, joining the faculty in 2001. He blends his clinical work and health services research with leadership roles in organized medicine, currently serving as Chair of the Board of Trustees of the American Medical Association. He's a Louisiana native who lives in San Rafael with his wife Ellen (also a physician) and 2 kids.



Derek Ward, MD

Assistant Professor, Orthopaedic Surgery
Medical Director of Surgical Patient Care Optimization

Elizabeth Wick, MD

Associate Professor, Surgery
Medical Director of Perioperative Quality and Patient Safety

Liza joined the UCSF faculty in 2016 and spends her time blending her clinical work in colorectal surgery with academic interests around the role of teamwork and communication in improving perioperative outcomes. She lives in San Francisco with her husband and two sons.

