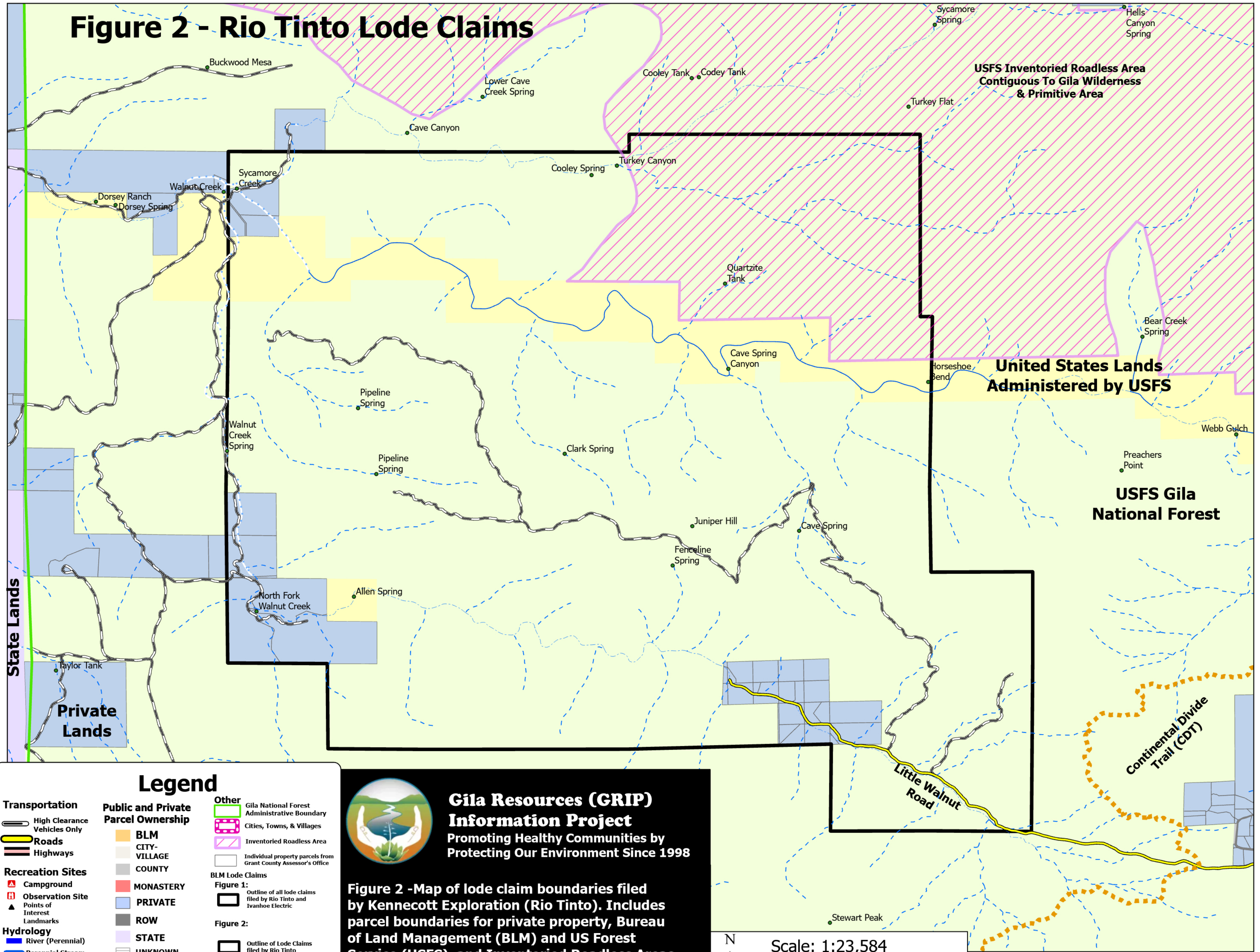


Figure 2 - Rio Tinto Lode Claims



Legend

Transportation High Clearance Vehicles Only Roads Highways	Public and Private Parcel Ownership BLM CITY-VILLAGE COUNTY MONASTERY PRIVATE ROW STATE UNKNOWN USA USFS	Other Gila National Forest Administrative Boundary Cities, Towns, & Villages Inventoried Roadless Area Individual property parcels from Grant County Assessor's Office BLM Lode Claims Figure 1: Outline of all lode claims filed by Rio Tinto and Ivanhoe Electric Figure 2: Outline of Lode Claims filed by Rio Tinto
Recreation Sites Campground Observation Site Points of Interest Landmarks		
Hydrology River (Perennial) Perennial Stream Intermittent Stream Ephemeral Stream Artificial Path		



Gila Resources (GRIP) Information Project
 Promoting Healthy Communities by Protecting Our Environment Since 1998

Figure 2 -Map of lode claim boundaries filed by Kennecott Exploration (Rio Tinto). Includes parcel boundaries for private property, Bureau of Land Management (BLM) and US Forest Service (USFS), and Inventoried Roadless Areas. Legend See Figure 3.

N
 Scale: 1:23,584
 1 Miles