



Inner West Collective Impact Initiative

What we've been up to...

The Inner West Collective Impact initiative is working to see that children and young people 0-18 in the Inner West suburbs thrive. What this means, is that children and young people reach their full physical, intellectual, social, emotional, and spiritual potential; that they are resilient and supported by systems and environments that nurture interdependence.

The July-December 2017 period was very active and the initiative has continued to grow and adapt. During this period, the Department for Communities and Social Inclusion (DCSI) sought to align the **Community Services Support Program (CSSP)** with the work of regional Collective Impact initiatives in SA.

A presentation was made to agencies providing CSSP-funded programs in the catchment area for the Inner West initiative. This generated much interest amongst these agencies, very fruitful conversations about alignment with the initiative and a growth of our leadership capacity.

Throughout this year we have run a series of quarterly forums, at which a large number of stakeholders came together to hear reports from working groups on their progress, to have input into further planning and to provide feedback. These forums have been very successful and have been wonderful opportunities for sharing, learning from each other and for guiding the initiative.

In September, the third forum was held. This forum was very inspiring in that adults and young people came together to present the work undertaken by the Working Groups, present summaries of the surveys that have been conducted with children and young people and to co-design the next steps. This was a wonderful demonstration of the value of seeking the voice of children and young people.

At this forum, we also reviewed the 2017 journey, unpacked what has worked well and what we have learnt. This was a very informative review and has led to a refinement of the priorities being pursued.

What we've achieved...

One of the great successes during this period was a project conducted with the Beacon Foundation.

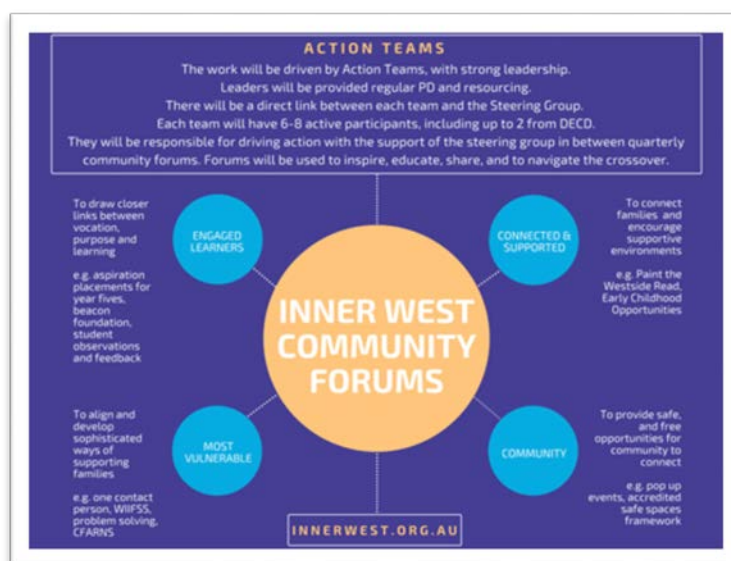
To join the Inner West Collective Impact Initiative contact:

For more information or to become involved with this Collective Impact Initiative, please contact

Michael Edgecomb 0468 761 396 micheal.edgecomb@smg.asn.au or Chris Arbon 0427 959 925 chris.arbon@ucwb.org.au

This foundation was established in Tasmania in 1988 and focuses on disadvantaged communities and areas of high youth unemployment. The Foundation works with schools, businesses and communities to inspire young people to think about careers and to experience the workplace long before they leave school. We hope that this collaboration will continue into next year.

The **'Paint the Inner West ReAd'** project continues to flourish. This has been led by the Parks Community Partnership group and is a community capability building strategy. Families and children aged 0-5 are engaged and developing their literacy skills.



At the quarterly forum held in December, the attendees were presented with a revised Governance Model and Action Plan for 2018. The revised Plan acknowledged feedback from a range of stakeholders and proposed a manageable suite of actions for next year. The Steering Group is to be expanded to 12 members and will be made up of members of key stakeholder groups.

Where we're going...

Inner West Collective Impact Initiative will continue with stakeholder and community engagement, and establishing Action Groups to progress the projects identified under the four priorities of:

- engaged learners
- connected and supported families
- community connections
- support for most vulnerable families