



NERPM 2020 Visum Model User Guide

1. System Requirements and Installation Guide

April 2025

1. System Requirements and Installation Guide



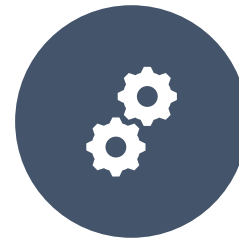
System Requirements



PTV Visum Software
Installation



PTV Visum License Setup



NERPM 2020 Visum Model
Installation



System Requirements

Hardware requirements

	Minimum	Recommended for standard installation
Processor	X64 processor with support for SSE4.2, e.g.: <ul style="list-style-type: none">• Intel Core i5 / Core i7• AMD FX	Recent multi-core processor, e.g.: <ul style="list-style-type: none">• Intel Core i7-12700K, i9-12900K, i9-12900KS• Intel Xeon W-1370, W-1370P, W-1390P• AMD Ryzen 9 5900X, Ryzen 9 5950X or better ¹
Memory	4 GB	16-32 GB or more ²
Disk space (software)	2 GB free disk space per product for compact installation	5 GB free disk space per product for full installation
Monitor	Screen resolution 1280x800 or 1366x768 pixels	Full HD (1920x1080 pixels) or higher resolutions, multiple screens are supported
Graphics Card	For 3D Graphics OpenGL® 3.0 or DirectX 11 support is recommended	
USB / Network	<ul style="list-style-type: none">• In case the license is provided in relation with a hardware dongle a full USB port is required for operation.• In case a network license is provided, access to a license server in the local network or the internet is required for operation.	
Disk space (project data)	Sufficient storage capacity for project data handling, ideally on SSD	

Software requirements

- Microsoft Windows 10, latest release
- Microsoft Windows 11, latest release
- Microsoft Windows 2016 Server, latest Service Pack
- Microsoft Windows 2019 Server, latest Service Pack
- Microsoft Windows 2022 Server, latest release

The software can usually be run on most other versions of the Microsoft Windows operating system as long as they are currently supported by Microsoft (see [Windows Lifecycle Fact Sheet](#)).

Restrictions may apply to older LTSC/LTSC or Education editions of Microsoft Windows.



PTV Visum Installation Preparation

- ✓ Make sure that all other applications are closed.
- ✓ Make sure you have received an email with the Ticket code for retrieving the License information and have it available.
- ✓ Download the PTV Visum files from the website specified in the e-mail or from the [PTV Download Server](#). As shown on the right, you will need to download the setup file for **PTV Visum 2025**.
- ✓ Download **PTV Vision – Python 3.9.5** from the [PTV Download Server](#).
- ✓ *Note: The download page will not work with the Internet Explorer browser. Please use Microsoft Edge, Google Chrome or Firefox to download the files.*

Downloads

Download here the setup packages of PTV Visum, PTV Vissim, PTV Viswalk and PTV Vistro. A step by step tutorial for installing the software is provided in the document 'Installation Manual'. Please contact Sales for previous versions.

Product: PTV Visum | Version: 2025 | [Reset filter](#)

PTV Visum

Version	Edition	Description	File Type	
2025		Visum - What's new?	Document	Download (pdf 2734 KB 2024-10-08)
2025		Installation Manual	Document	Download (pdf 945 KB 2024-09-26)
2025.01-00		Release Notes	Document	Download (pdf 163 KB 2024-10-17)
2025.01-00	64 bit	PTV Visum	Setup	Download (exe 1382 MB 2024-10-08)
2025.01-00		Examples	Setup	Download (exe 1065 MB 2024-10-08)

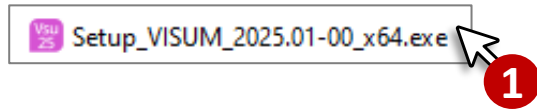
PTV Vision - Python

Version	Edition	Description	File Type	
3.9.5	64 bit	Vision-Python	Setup	Download (exe 39 MB 2022-04-25)
3.7.4	64 bit	Vision-Python	Setup	Download (exe 36 MB 2021-01-22)
2.7.15	64 bit	Vision-Python	Setup	Download (exe 28 MB 2019-04-19)

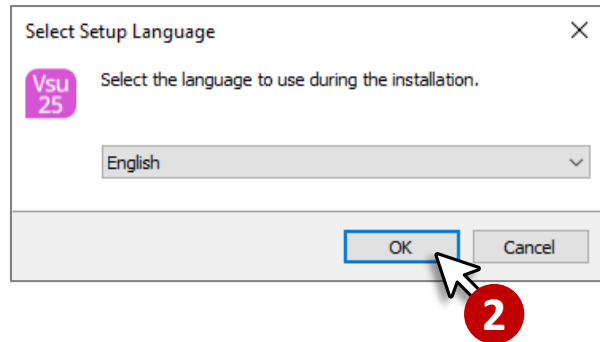


PTV Visum Installation

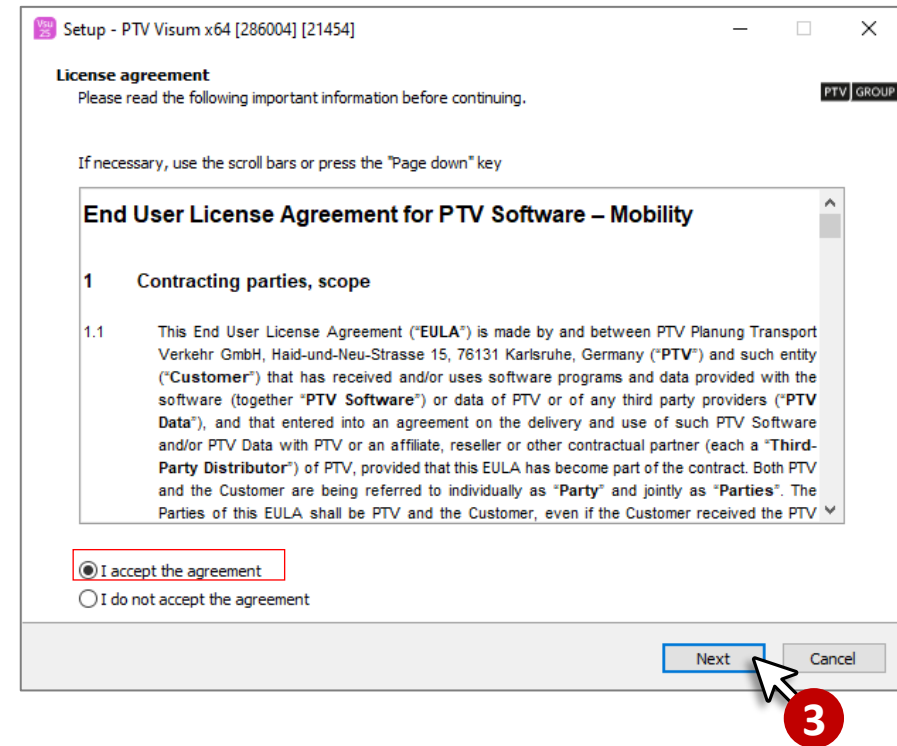
1. Run the PTV Visum setup file (i.e. Setup_VISUM_2025.01-00.X64.exe)



2. When the **Select Setup Language** window opens, select **English** and click **OK**.



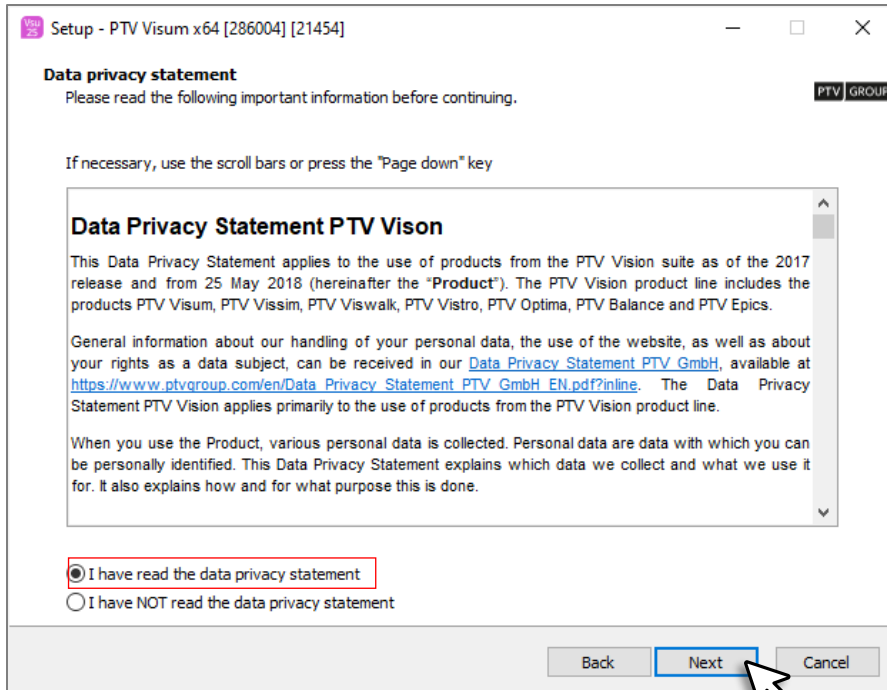
3. Read the **License Agreement** and select the **I accept the agreement** option. Then click the **Next** button.



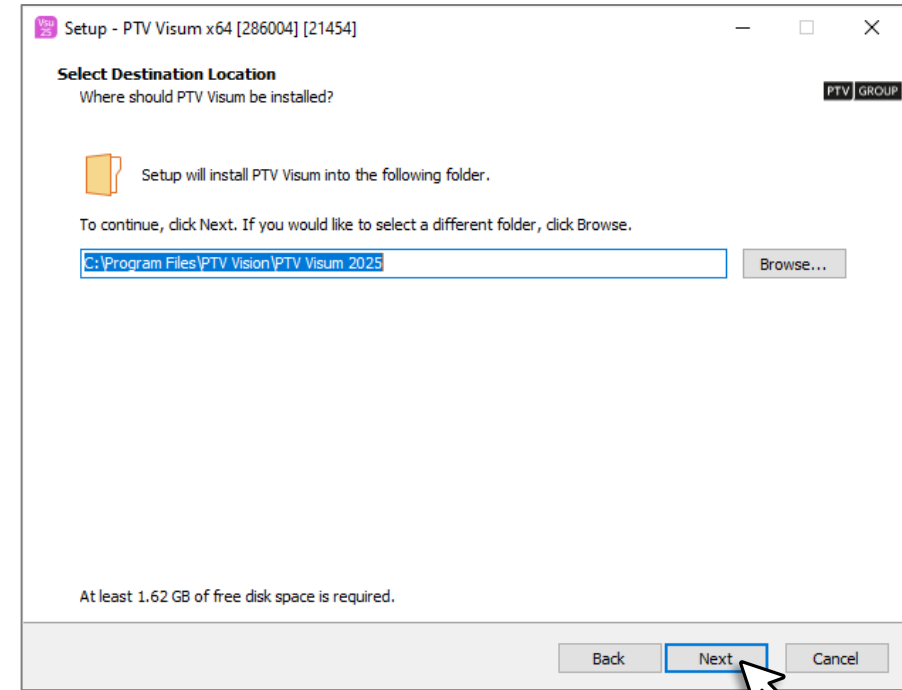


PTV Visum Installation

4. Read the **Data Privacy Policy** and select the **I have read the data privacy policy** option. Then click the **Next** button.



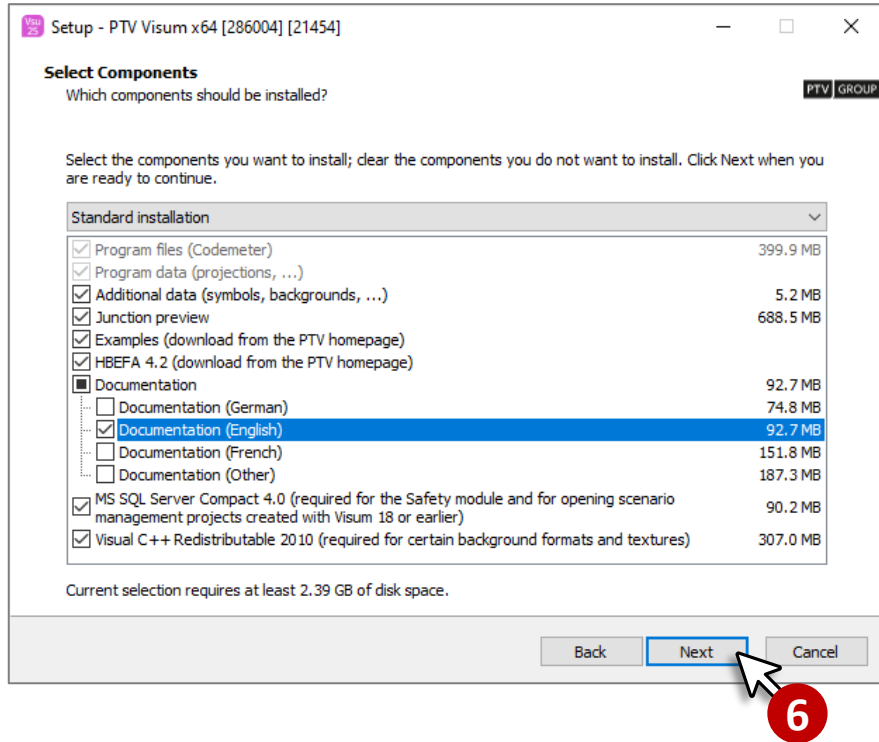
5. Select the directory where you want to install PTV Visum and click the **Next** button.



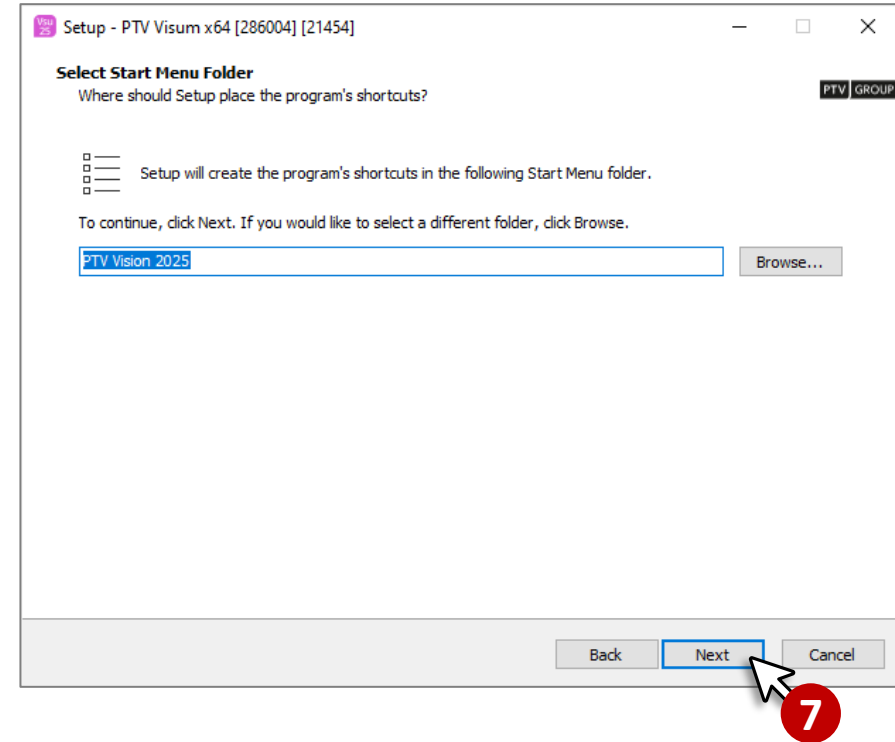


PTV Visum Installation

6. Select the components that you want to install and click the **Next** button. We recommend the **Standard installation**.



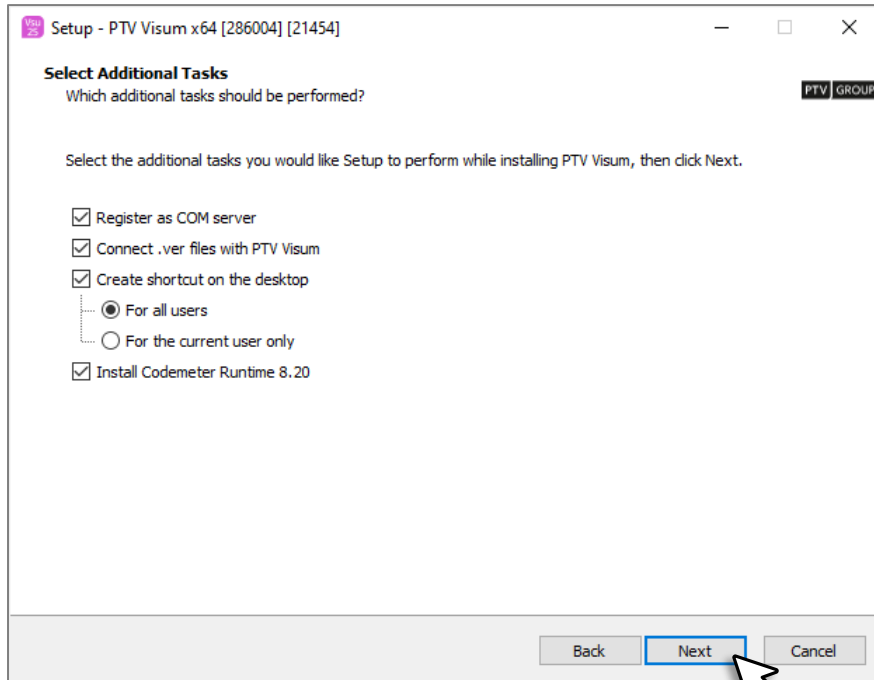
7. Specify in which folder of the Windows start menu or in which group of the start screen the PTV Visum shortcuts shall be created and click the **Next** button.



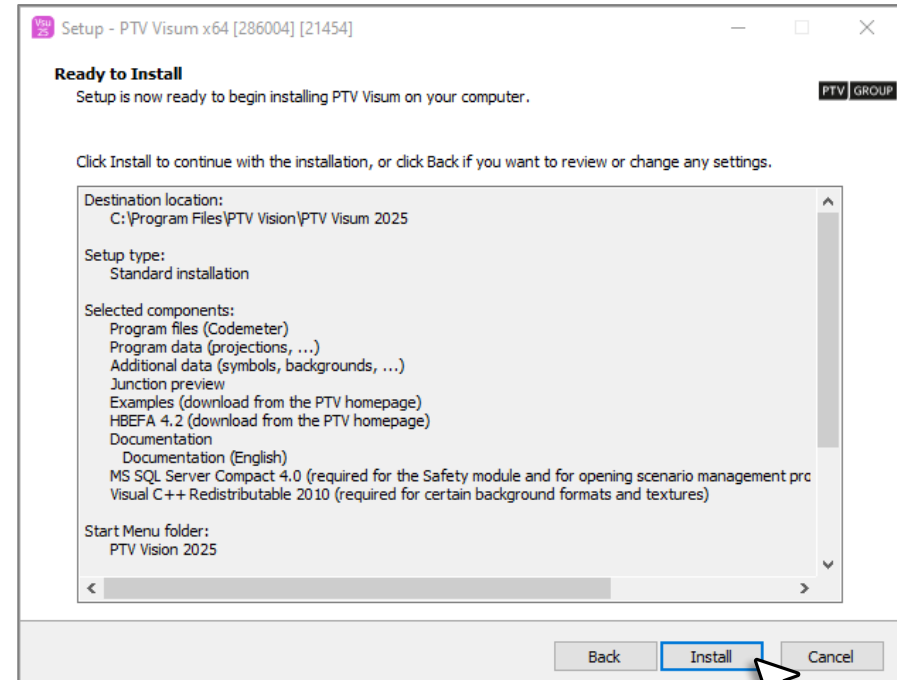


PTV Visum Installation

8. Select additional tasks to be performed in the installation and click the **Next** button.



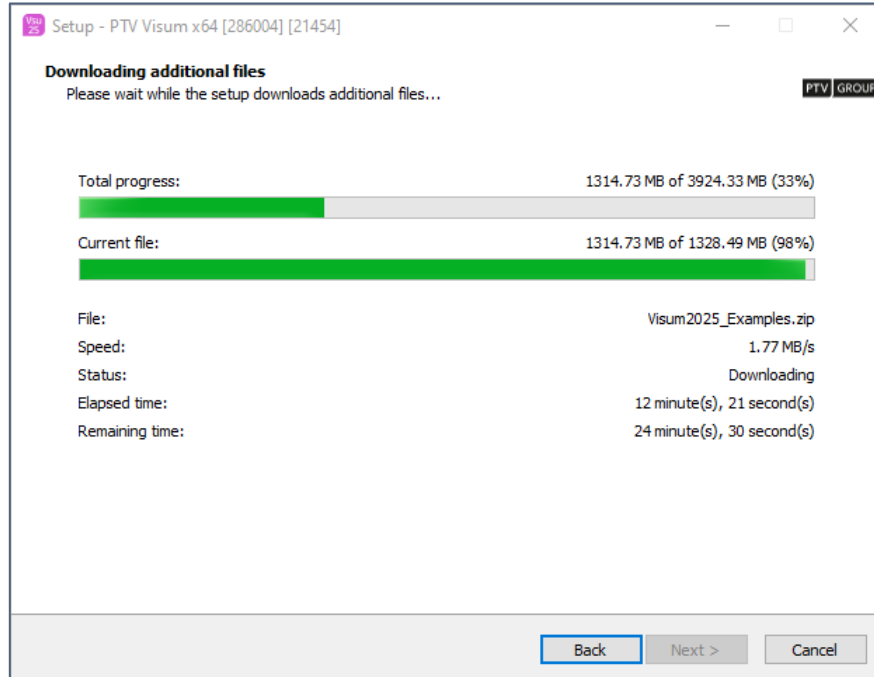
9. Verify your selection and click the **Install** button.





PTV Visum Installation

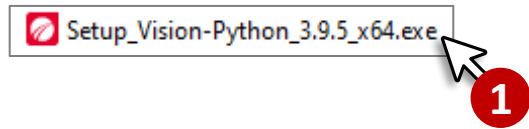
10. Once the installation is completed, click the **Finish** button. We recommend restarting your computer after installation.



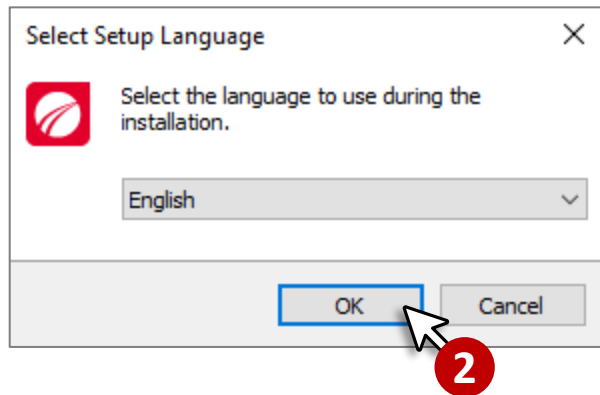


PTV Vision – Python Installation

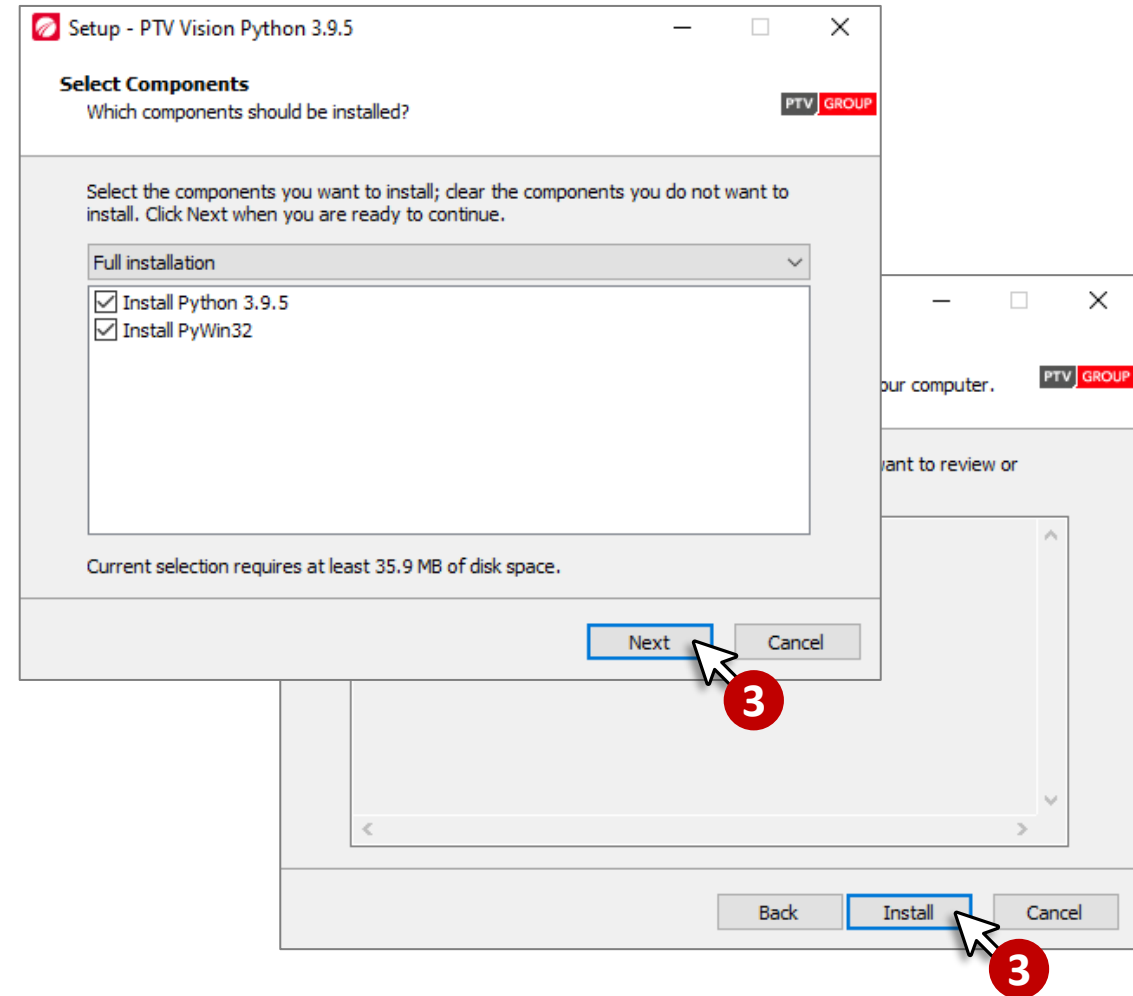
1. Run the PTV Vision – Python setup file (i.e. Setup_Vision-Python_3.9.5_x64.exe).



2. When the **Select Setup Language** window opens, select **English** and click **OK**.



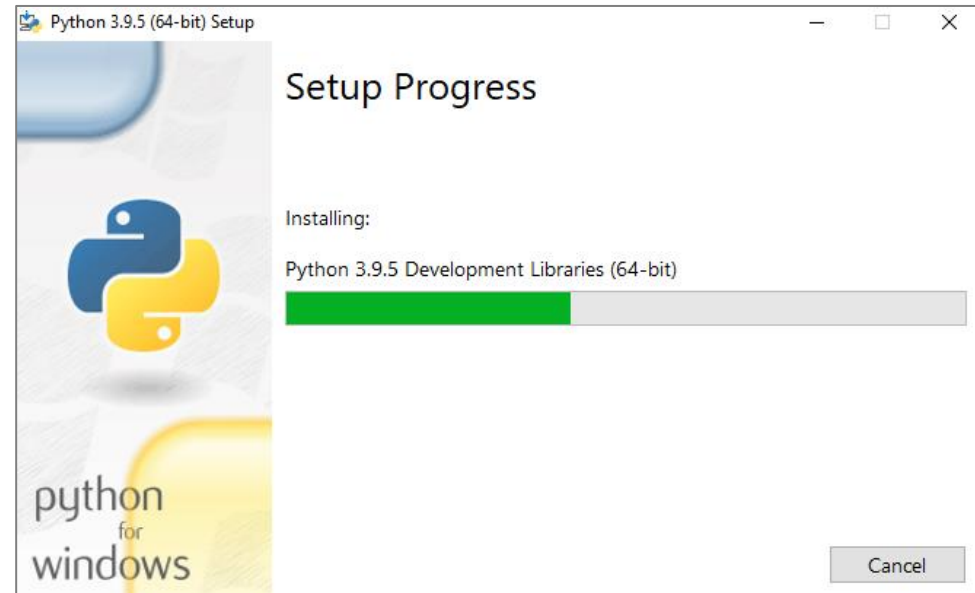
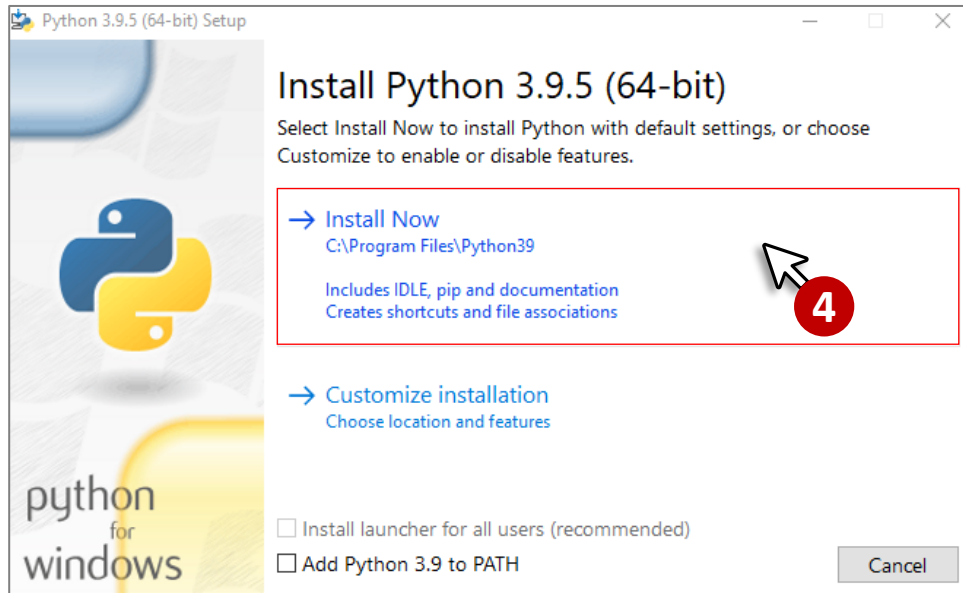
3. Select **Full Installation** and click **Next** then **Install**.





PTV Vision – Python Installation

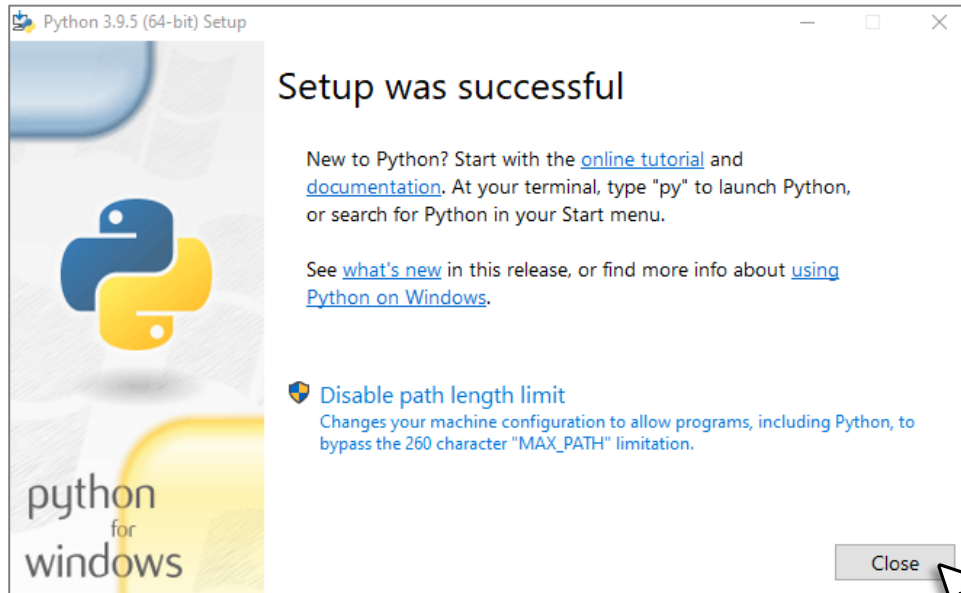
4. Click **Install Now**.



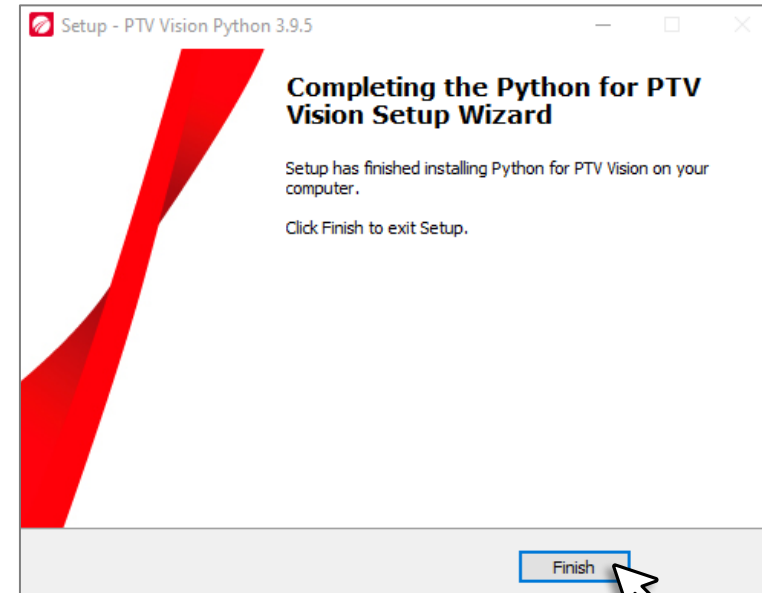


PTV Vision – Python Installation

5. Once the setup is successful, click on **Close** then **Finish**.



5



5



PTV Visum License Setup Preparation

- ✓ Download the **PTV License Manager (Standard)** from [PTV Vision Setups](#)

PTV Vision - License Management				
Version	Edition	Description	File Type	
All versions	64 bit	License Manager (Server)	Setup	Download (exe 99 MB 2024-12-20)
All versions	64 bit	License Manager (Standard)	Setup	Download (exe 99 MB 2024-12-20)
8.20	64 bit	CodeMeter Runtime	Setup	Download (msi 153 MB 2024-09-19)
8.20	32 bit	CodeMeter Runtime	Setup	Download (msi 138 MB 2024-09-19)
8.20	64 bit	CodeMeter Runtime - Driver Only (Linux)	Other	Download (deb 25 MB)

Note:

- *The **PTV License Manager** tool is a standalone application with its own release cycle, independent of the PTV Vision Suite products it is associated with. Therefore, please ensure that you are using the latest version of the tool. In the current versions, you will be notified if there is a newer version available.*

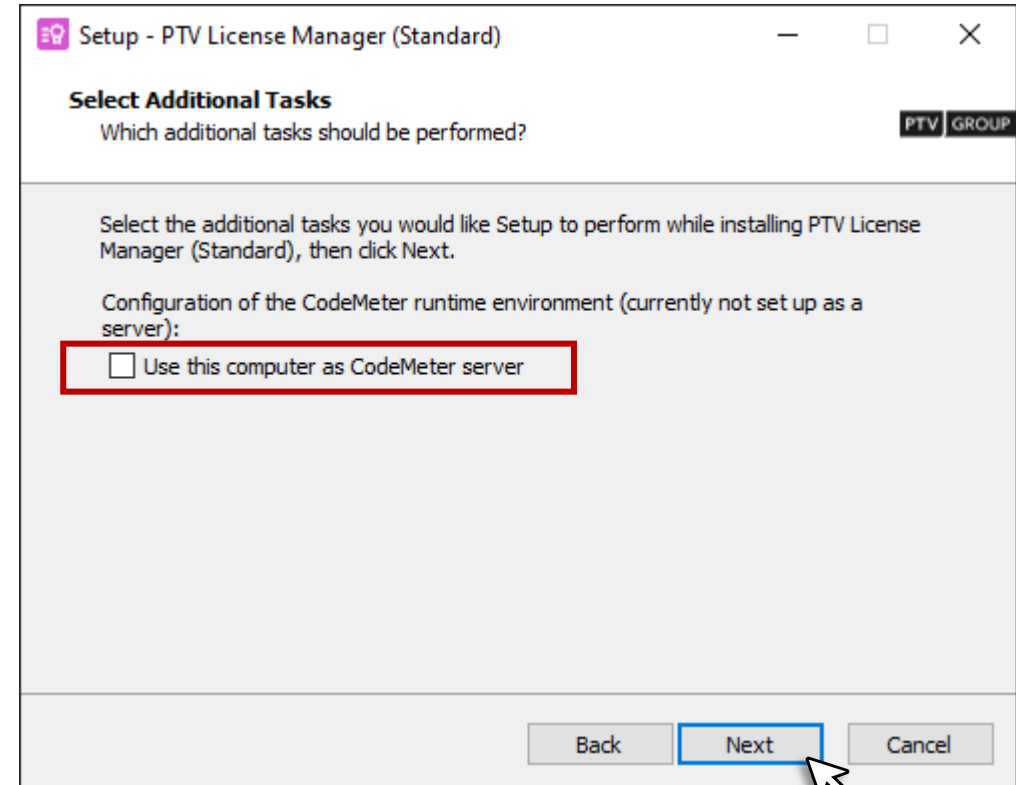
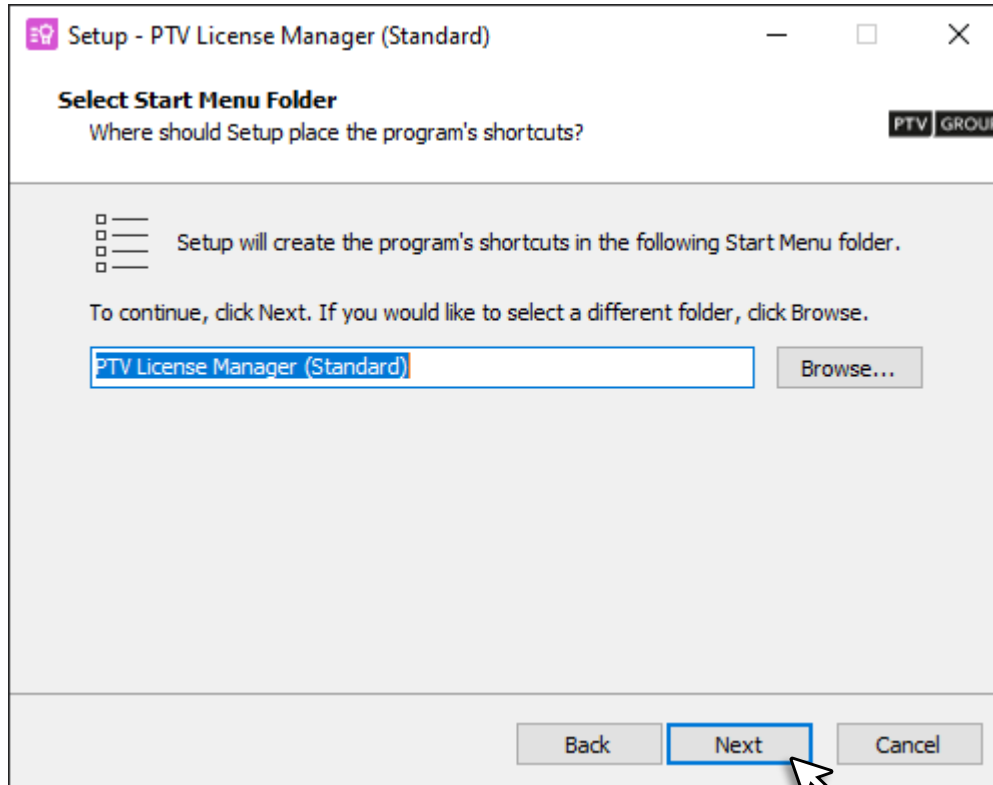
PTV Visum License Setup

1. Run the **PTV License Manager (Standard) setup file** (i.e. **LicenseManager.exe**)
2. In the Select Setup Language window, select **English** and click **OK**.
3. In the **Select Components** step, select **Full installation** for only **License Manager**, then click **Next**



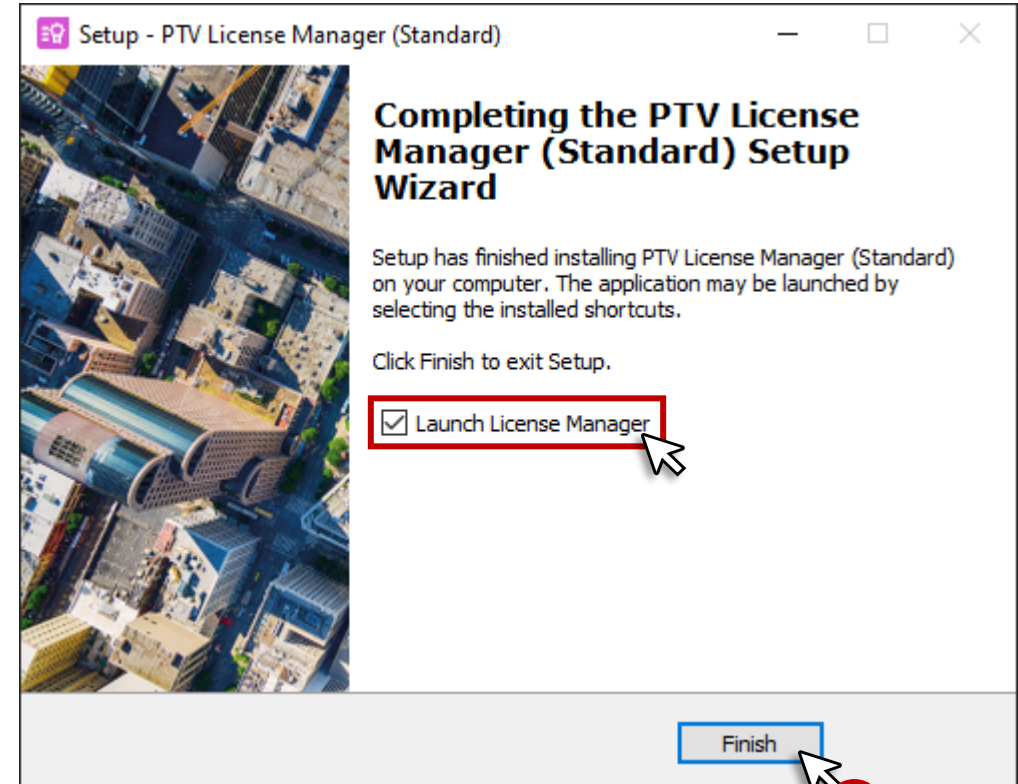
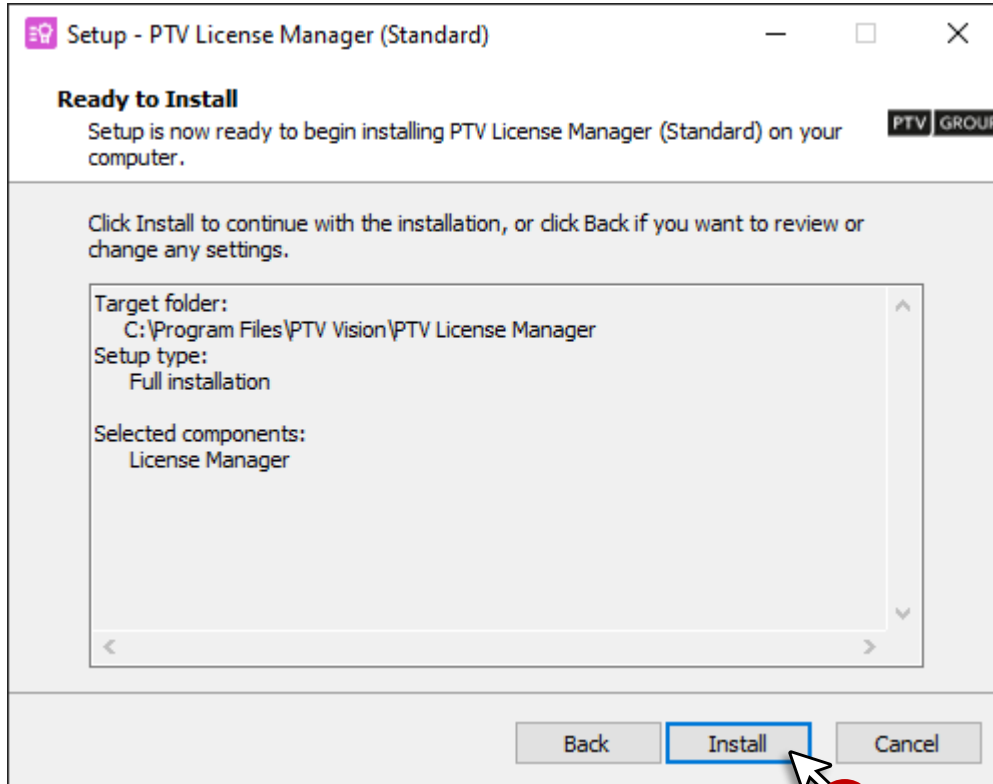
PTV Visum License Setup

4. In the **Select Start Menu Folder** step, keep the default setting, and click **Next**
5. In the **Select Additional Tasks** step, do **NOT** check the box for **Use this computer as CodeMeter server**, and click **Next**



PTV Visum License Setup

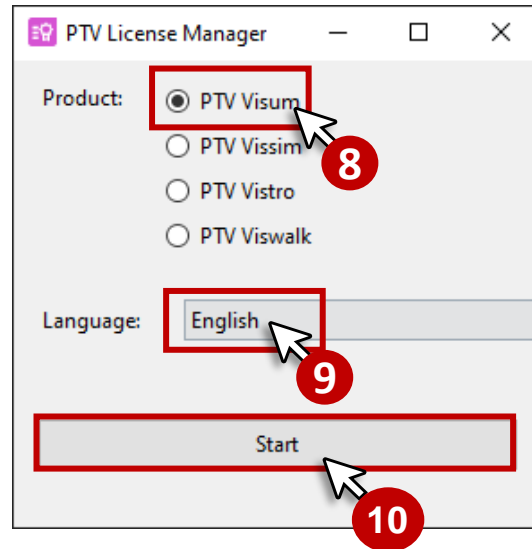
6. Click **Install** to continue with the installation
7. Check the box to **Launch License Manager** and click **Finish**





PTV Visum License Setup

8. When the PTV License Manager window opens, select product **PTV Visum**
9. Select language **English**
10. Click the **Start** button



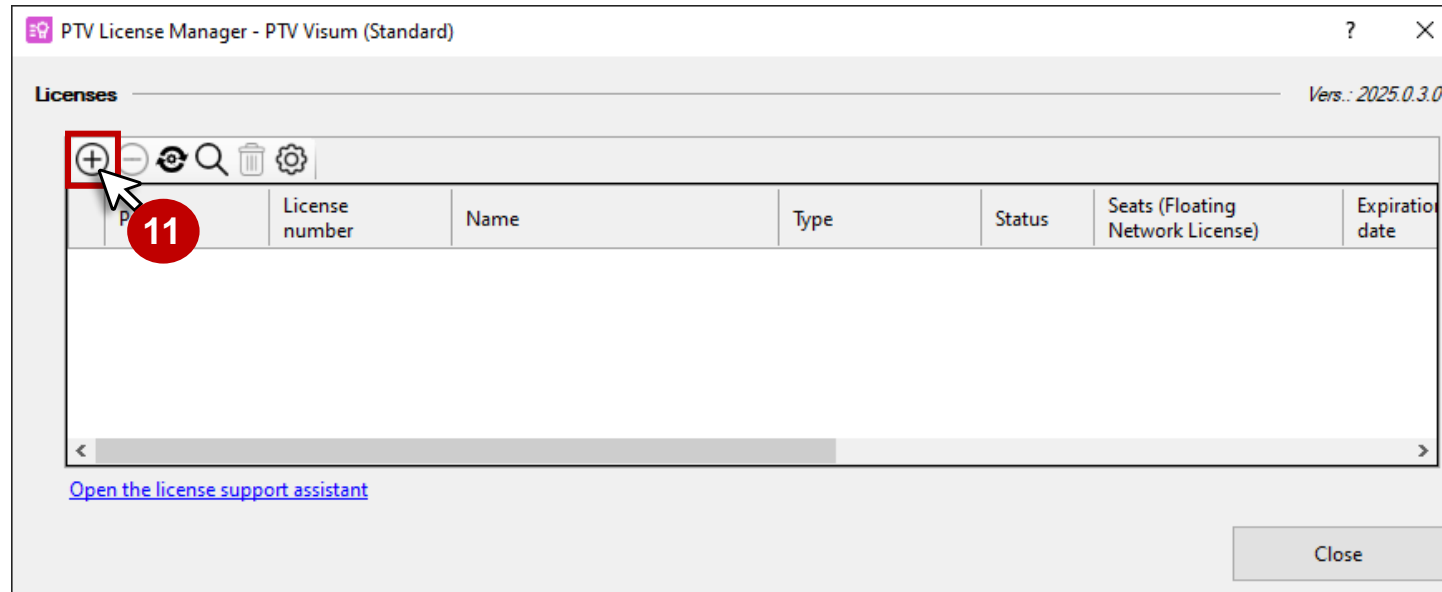


PTV Visum License Setup

Prerequisites:

- ✓ Internet connection
- ✓ At least version 7.10 of the CodeMeter Runtime Kit program (the latest CodeMeter Runtime Kit is installed together with the product by default)

11. Click the **Activate new license** symbol

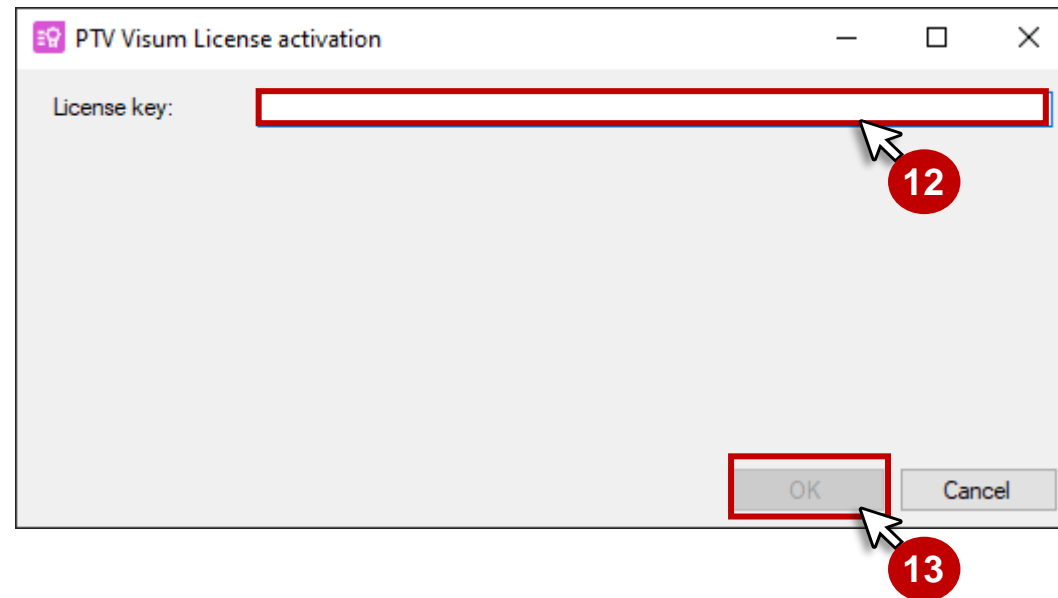




PTV Visum License Setup

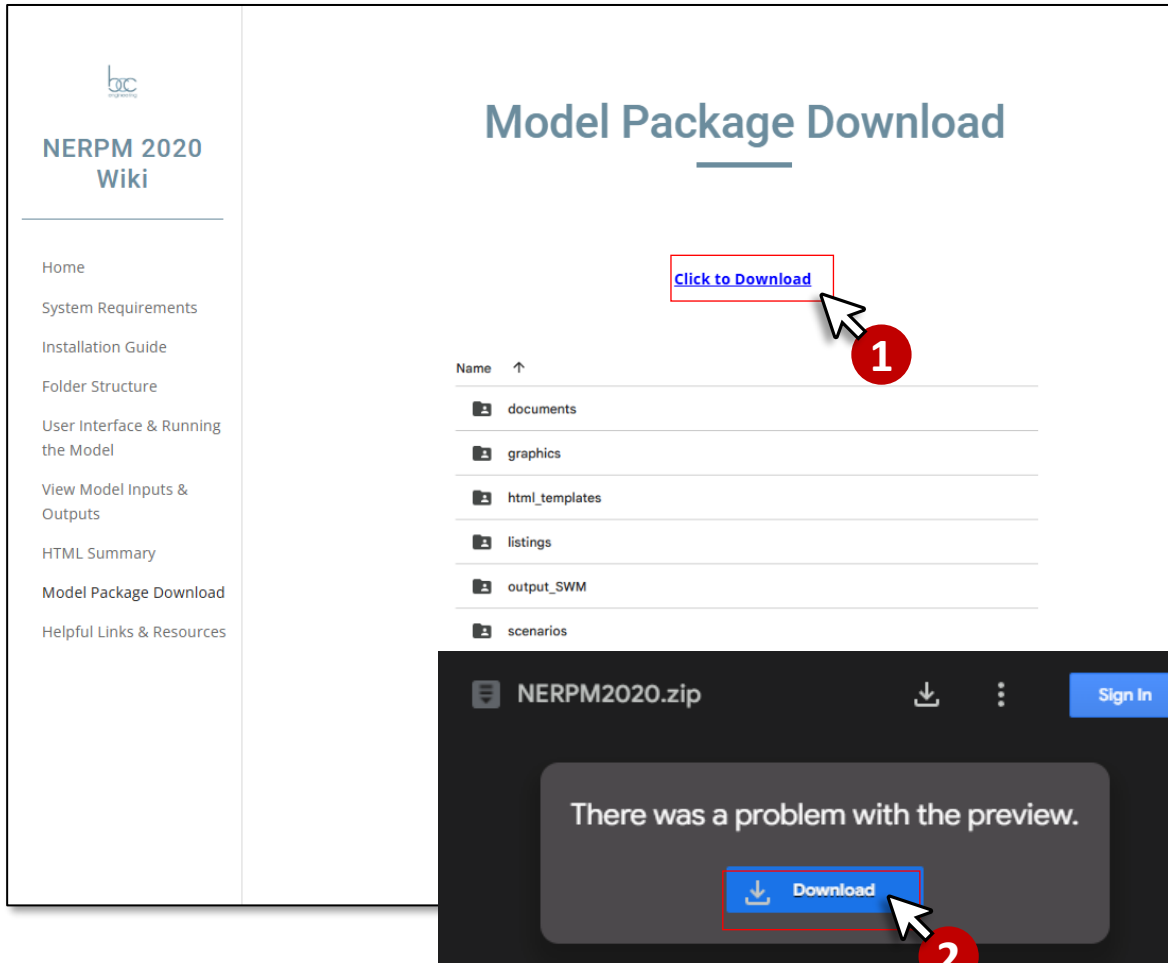
12. Copy and paste the license key received from e-mail
 - For public sector users, please contact Terry Corkery (Terrence.Corkery@dot.state.fl.us) to obtain the license key.
13. Click **Ok**
14. Click the **Next** button
15. Select the option **On this computer**
16. If necessary, select the license container in which you want to save the license key in the **Container** drop-down list
17. Click the **Next** button.

*The license is activated in the selected license container. After that, the license will be available in the list of licenses in the **License Management** window.*



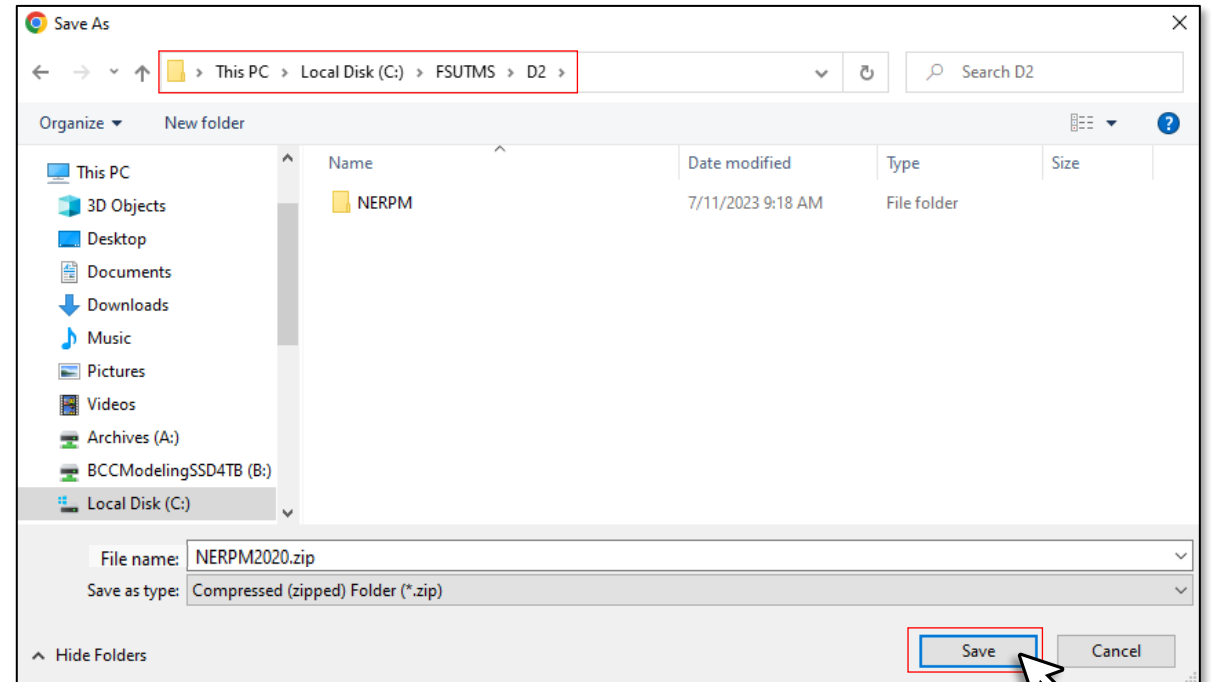
NERPM 2020 Visum Model Installation

1. Access link: [NERPM 2020 Model Package Download](https://sites.google.com/view/nerpm2020/model-package-download) and click on **Click to Download**
2. Click on **Download**
3. Click on **Download anyway**
4. Save the file under **C:\FSUTMS\D2**



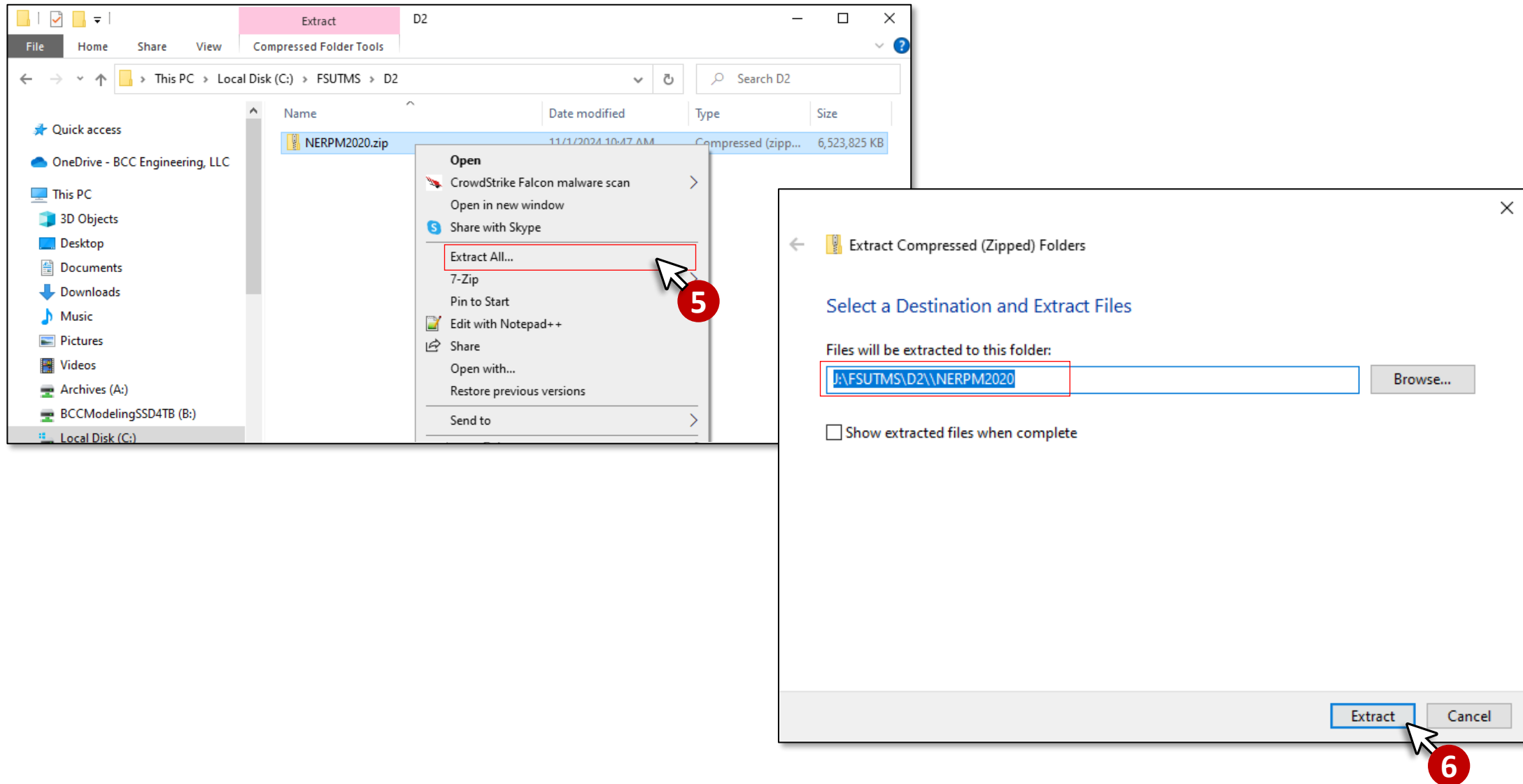
Google Drive can't scan this file for viruses.

NERPM2020.zip (4.0G) is too large for Google to scan for viruses. Would you still like to download this file?



NERPM 2020 Visum Model Installation

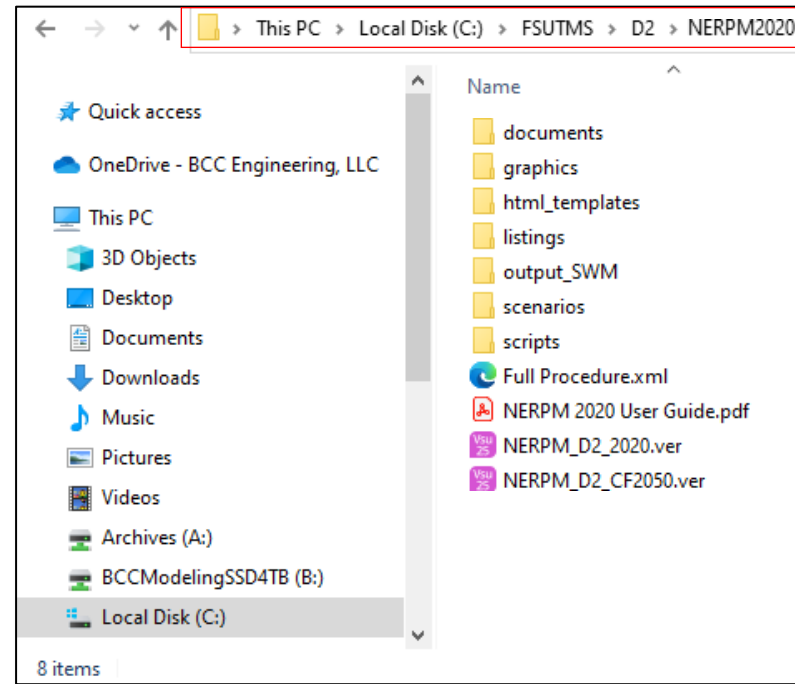
5. Right-click the file and click **Extract All**
6. Extract the zip file to **C:\FSUTMS\D2**





NERPM 2020 Visum Model Installation

7. Then model is saved under ***C:\FSUTMS\D2\NERPM2020***



NERPM 2020 Visum Model Excel Writer Installation

1. Go to **C:\FSUTMS\D2\NERPM2020\libraries\site-packages**
2. Copy the “**xlsxwriter**” and “**XlsxWriter-3.0.3.dist-info**” folders
3. Paste the copied folders into the folder **C:\Program Files\PTV Vision\PTV Visum 2025\Exe\Python\Lib\site-packages**

