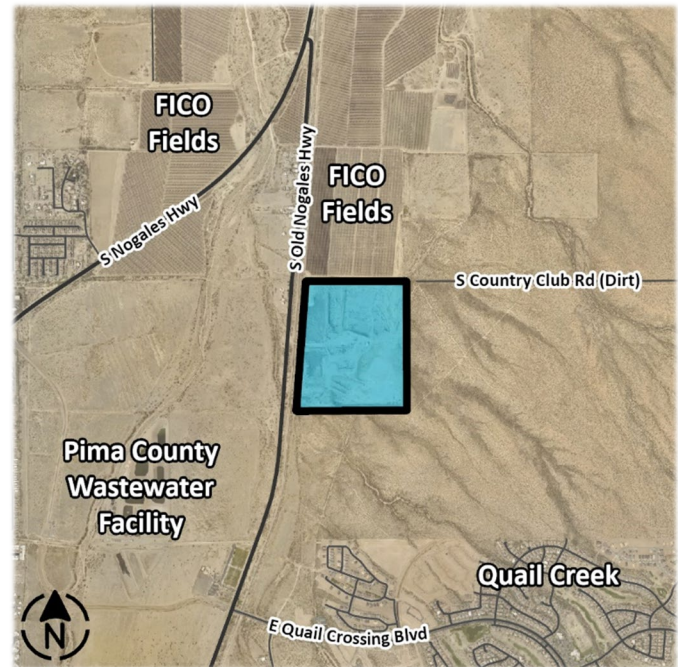


On behalf of Vulcan Materials Company, The Planning Center invites you to an open house to discuss a conditional use permit for a new hot mix asphalt plant to be added to the existing sand and gravel operation at 18701 S Old Nogales Hwy in Sahuarita (see location map at right). Hot mix asphalt is a material primarily used to pave and repair roadways. Vulcan's operations currently include an active sand and gravel mining operation, an aggregate plant, a wet plant, and a ready-mix concrete plant.

The proposed plant will be located in the southeast portion of the site in the existing pit. This location will preclude it from being visible from neighboring properties. The existing berm along the property boundary will remain in place to continue screening the operations from view.



Project Site

Once fully operational, this site will create 20-25 jobs and supply aggregates, asphalt, and concrete for the local market.

We hope you will join us to learn more about Vulcan and this project.

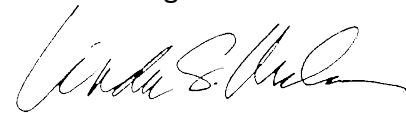
Date: Monday, January 23rd, 2023

Time: 6:00 PM

Location: American Legion Post 66, 1560 W Duval Mine Road, Green Valley, AZ 85614

Feel free to contact me at lmorales@azplanningcenter.com or (520) 623-6146 if you have questions or need further information about this Open House

Sincerely,
The Planning Center



Linda Morales, AICP
CEO

To Quail Creek Residents: The Town of Sahuarita's conditional use permit process requires notification of all property owners within 1,000 feet of the site. Quail Creek is outside the official notice area, but we wanted to invite the community to the open house and inform residents of the project. Official notice for future hearings will be provided by the Town only to those properties within 1,000 feet of the project.

Additional Information

Vulcan Materials Company is the nation's largest producer of construction aggregates—primarily crushed stone, sand, and gravel—and a major producer of aggregates-based construction materials, including asphalt and ready-mixed concrete. Vulcan has over 400 active aggregate facilities, 70 asphalt facilities, and 240 concrete facilities, which also consume aggregates. Vulcan has more than 12,000 employees at approximately 720 operations in 22 states, Washington, D.C., Canada, Bahamas, Mexico, and the U.S. Virgin Islands.

What Vulcan produces is used in nearly all forms of construction. In particular, large quantities of aggregates are used to build and repair valuable infrastructure, such as roads and bridges, and to construct both residential and nonresidential buildings, such as manufacturing facilities, office buildings, schools, hospitals, and churches.



Meeting Location