

## Notre Dame High School- Belmont

1540 Ralston Ave, Belmont, CA 94002

<http://www.ndhsb.org> T: 650-595-1913

### SCHOOL

Notre Dame High School, Belmont is an independent Catholic college preparatory school dedicated to the educational mission of St. Julie Billiart and the Sisters of Notre Dame de Namur. Notre Dame High School was established by the Sisters of Notre Dame de Namur in 1851 and moved to the historic William Ralston Estate in 1923. The school is located on 10.6 acres in Belmont, California, a professional suburban community located midway between San Francisco and San Jose.

### MISSION

We are a caring and compassionate community committed to promoting justice and peace while developing responsible young women of active faith, strong intellect, and Christian leadership. We develop the gifts and talents of each student and foster Gospel values in an environment of academic excellence and mutual respect.

### COMMUNITY

The school draws its student body principally from San Mateo County. Families of the school often reflect middle to upper middle class economic background. Of the 414 students, 100 comprise the senior class. International students encompass 4.8%. The student/teaching faculty ratio is 13:1. The student/teaching faculty and professional staff ratio is 9:1. The average class size is 19.44. For the class of 2021, 92% of students enrolled into a 4-year college, 4.8% at a community college, .8% began a gap year, .8% entered into CTE, and 1.6% did not report.

### STUDENT ACTIVITIES PROGRAM

Notre Dame High School offers a strong interscholastic sports program including cross-country, tennis, golf, volleyball, water polo, basketball, soccer, swimming, softball, and track and field. Cheerleading is part of the program as it competes in regional and national competitions each year. Other activities include associated student body, student council, California Scholarship Federation, National Honor Society, one school



### Administration

LINDA KERN, PH.D  
Interim Head of School  
[lkern@ndhsb.org](mailto:lkern@ndhsb.org)

JOLANDA BREAZEALE, BA  
Interim Associate Head of School  
[jbreazeale@ndhsb.org](mailto:jbreazeale@ndhsb.org)

### Counseling

DINA CUNHA, PsyD, PPS  
Director of College Counseling  
& AP/PSAT Coordinator  
[dcunha@ndhsb.org](mailto:dcunha@ndhsb.org)

ALLAN GARGARITANO, MA, PPS  
School Counselor  
[agargaritano@ndhsb.org](mailto:agargaritano@ndhsb.org)

CHRISTINA CHRISTENSON, MA, PPS  
School Counselor &  
EFS Coordinator  
[cchristenson@ndhsb.org](mailto:cchristenson@ndhsb.org)

MICHELLE CAMPUSANO, MA, PPS  
School Counselor  
[sladuke@ndhsb.org](mailto:sladuke@ndhsb.org)

**FACULTY/ADMINISTRATION:**  
41.55 FTE, 91.8% hold one or  
more Advanced degrees

**ACCREDITATION:**  
Western Association of Schools  
and Colleges

**CEEB:** #050275

publications (*The Catalyst*), and clubs and organizations.

## TRI-SCHOOL PROGRAM

Notre Dame High School- Belmont, Mercy High School-Burlingame, and Junipero Serra High School participate in a Tri-School (T-S) program that provides co-educational experiences in the areas of academics, performing arts, and student activities.

## COVID-19 RESPONSE

On March 9<sup>th</sup>, 2020, Notre Dame moved to an online synchronous learning model, with accommodations for students who require an asynchronous learning exception. In addition, NDB transitioned from an alternating block schedule to a fixed block schedule with Wednesdays reserved for flexible instruction. During this transition to online learning, we covered regular course content as well as maintained letter grades reported on transcripts for Spring 2020. NDB remained in this online model through March 1st, 2021. That same month, students returned to campus on a hybrid model. In Fall of 2021, students returned fully in person.

## ADVANCED PLACEMENT AND HONORS CURRICULUM

Students must meet faculty recommendation and course prerequisite grades to qualify. Students are recommended to take no more than 3 APs in one year.

### Honors Courses (15)

American Sign Language III  
American Sign Language IV  
Anatomy & Physiology (T-S)  
English I  
English II  
Geometry  
Algebra II  
Pre-calculus  
Biology  
Chemistry  
Modern World History  
Photography III  
Sculpture III  
French III  
Spanish III

### Advanced Placement Courses (22)

Art History  
Biology  
Calculus AB  
Calculus BC  
Chemistry  
Chinese (Tri-School)  
Computer Science A (Tri-School)  
Computer Science Principles (Started Fall 2019)  
English Language and Composition  
English Literature and Composition  
French Language and Culture  
Human Geography (Started F2020)  
Physics I  
Psychology  
Spanish Language and Culture Spanish  
Literature and Culture Statistics  
Studio Art: 2-D, 3-D, Drawing  
United States Government/Politics  
United States History

### ADVANCED PLACEMENT EXAMINATIONS (Class of 2021 & 2022)

In May of 2021, 177 students took 285 examinations in 21 subject areas. From this total, 75% earned a score of 3 or higher.



## Graduation Requirements

The minimum course load for a student is 30 credits per semester for all grade levels. Most students take 35 credits per semester. 240 credits with the following distribution are required for graduation:

**English** 40 credits  
**Mathematics** 30 credits  
**Physical Education** 10 credits  
**Spiritual Life** 40 credits  
**Science** 30 credits  
**Social Sciences** 30 credits  
**Visual/Performing Arts** 10 credits  
**World Languages** 20 credits  
**Electives** 30 credits  
**Plus 80 Hours of Community Service.**

## GRADING AND CLASS RANK

The calculation of a student's academic standing is based on a weighted grade point average. Grade reporting is two (2) times per year. We do not report class rank.

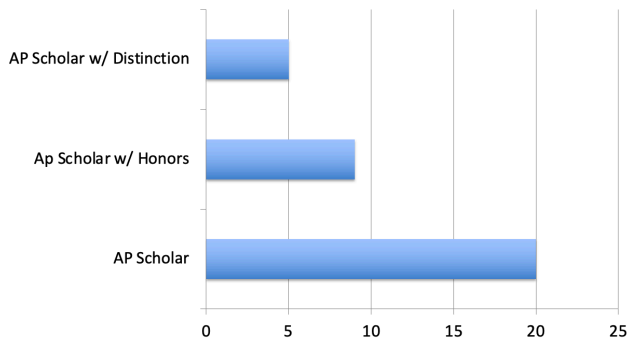
### Grade Scale Change beginning Fall 2019

A+ 98-100	C 73- 77
A 93- 97	C- 70-72
A- 90- 92	D+ 68- 69
B+ 88- 89	D 63- 67
B 83- 87	D- 60- 62
B- 80- 82	F 59 and below
C+78- 79	

## NATIONAL RECOGNITION

### Advanced Placement Recognition

Combined Classes of 2021 and 2022



### National Merit Scholarships

PSAT/NMSQT exams are offered to 10<sup>th</sup> & 11<sup>th</sup> graders at NDB every October.

**Class of 2019:** 1 Finalist/3 Commended Students

**Class of 2020:** 2 Finalists/2 Commended Students

**Class of 2021:** 2 Commended Students

**Class of 2022:** 4 Commended Students

### College Board National Recognitions Program

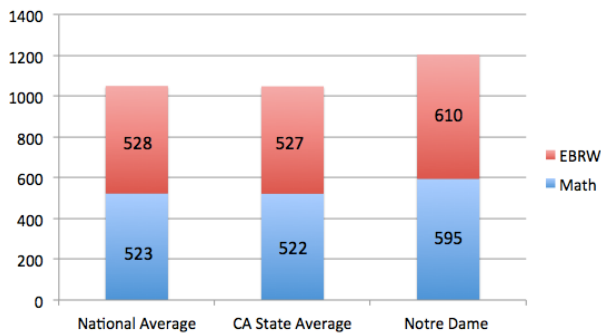
Top 2.5% of PSAT/NMSQT Test-takers Identified as African, Hispanic, or Latinx Americans, or Indigenous.

**Class of 2021:** 2 Scholars

## NOTRE DAME STATISTICS AT A GLANCE

### SAT Mean

Class of 2020



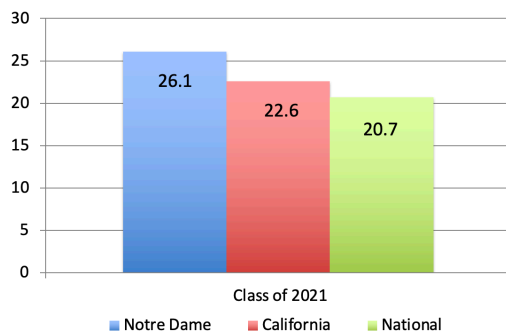
Students on average scored a 610 on Evidenced Based Reading and Writing and 595 on Math, exceeding benchmark levels.

SAT II Subject Exam –Mean

- Biology (m)- 655
- Chemistry- 708
- English Literature- 647
- Spanish- 660
- Math L2- 696
- Physics- 630

### ACT Average

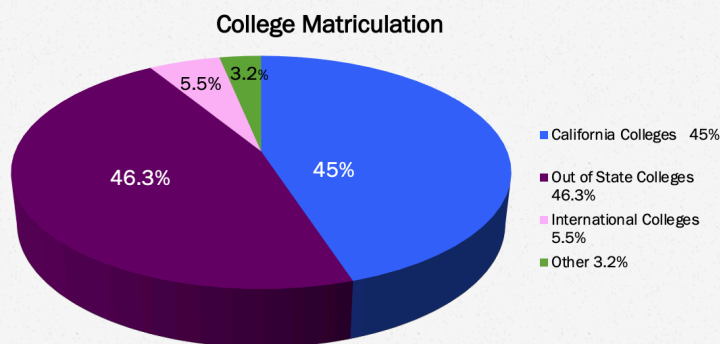
2021 Graduating Class



ACT Average Individual Composite Scores at NDB exceeding all benchmark levels.

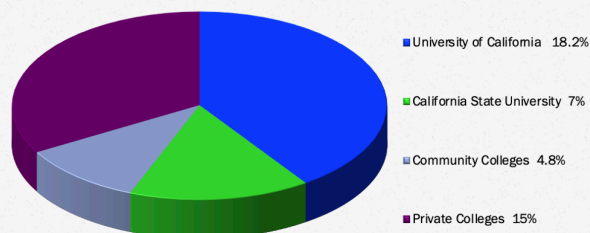
- English score: 27.3
- Math score: 25
- Reading score: 27.1
- Science score: 25.4
- STEM score: 25.2

# Class of 2021



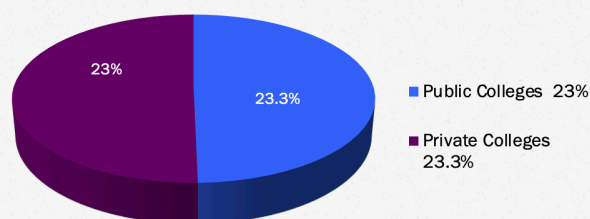
## Class of 2021

45% Matriculated at California Colleges



## Class of 2021

46.3% Matriculated at Out-of-State Colleges



## Class of 2019- 2021 College Acceptances Partial List

American University  
Arizona State University  
Auburn University  
Azusa Pacific University  
Babson College  
Bard College  
Barnard College  
Baylor University  
Belmont University  
Bennington College  
Berklee College of Music  
Biola University  
Biola University  
Boise State University

Boston University  
Brandeis University  
Bryn Mawr University  
California Lutheran University  
California State University Campuses  
California Northstate University College of Health Science  
Cardiff University (UK)  
Carnegie Mellon University  
Case Western Reserve University  
Central Washington University  
Chaminade University of Honolulu  
Chapman University  
Chicago State University  
Clark University

Clemson University	Rutgers University (Camden, New Brunswick, Newark)
Colby-Sawyer College	Ryerson University (CAN)
Colorado School of Mines	Saint Mary's College of California
Colorado State University	Santa Clara University
Columbia University	Sarah Lawrence College
Creighton University	Savannah College of Art & Design
De Montfort University (CAN)	Seattle University
Denison University	Seton Hall University
DePaul University	Skidmore College
Dominican University of California	Smith College
Dickinson College	Southern Methodist University
Duke University	St. Johns University
Elmhurst College	Stanford University
Elon University	SUNY- (Binghamton, Stony Brook)
Emerson College	Syracuse University
Emory University	Temple University
Fordham University	Texas A & M (College Station)
George Mason University	Texas Christian University
George Washington University	The New School (Parsons)
Gettysburg College	Tufts University
Gonzaga University	Tulane University
Hampshire College	United States Air Force
Hofstra University	University of Arizona
Holy Names University	University of British Columbia (CAN)
Indiana University at Bloomington	University of California Campuses
Knox College	University College Dublin (IE)
Lehigh University	University College London (UK)
Lesley University	University of Colorado (Boulder, Colorado Springs, Denver)
Lewis & Clark College	University of Connecticut
Long Island University (Brooklyn)	University of Florida
Louisiana State University	University of Glasgow (UK)
Loyola Marymount University	University of Georgia
Loyola University (Chicago, Maryland& New Orleans)	University of Illinois (Urbana-Champaign, Chicago)
Manhattan College	University of Massachusetts (Amherst & Boston)
Marist College	University of Miami
Marquette University	University of Michigan
Maryland Institute College of Art	University of Minnesota- Twin Cities)
Marymount California University	University of Missouri (Columbia & Kansas City)
Manhattan College	University of Nevada (Reno, Las Vegas) Marymount
Massachusetts College of Pharmacy & Health Science	University of Oregon
Menlo College	University of Queensland (AUS)
Miami University- Oxford	University of Portland
Montana State University	University of Puget Sound
Mount Allison University (CAN)	University of Rochester
New York University	University of San Diego
Newcastle University (UK)	University of San Francisco
Northeastern University	University of Southern California
Northern Arizona University	University of St. Andrews (UK)
Notre Dame de Namur University	University of the Pacific
Occidental College	University of Texas, Austin
Ohio State University	University of Washington (Seattle)
Oregon State University	University of Wisconsin- Madison
Pace University	Vanderbilt University
Pacific Lutheran University	Villanova University
Penn State University	Wake Forest University
Pepperdine University	Washington State University
Pitzer College	Washington University in St. Louis
Pratt Institute	Wellesley College
Princeton University	Wesleyan University
Purdue University	William & Mary (College of)
Rensselaer Polytechnic Institute	Willamette University
Rochester Institute of Technology	Worcester Polytechnic University
Rose-Hulman Institute of Technology	Xavier University