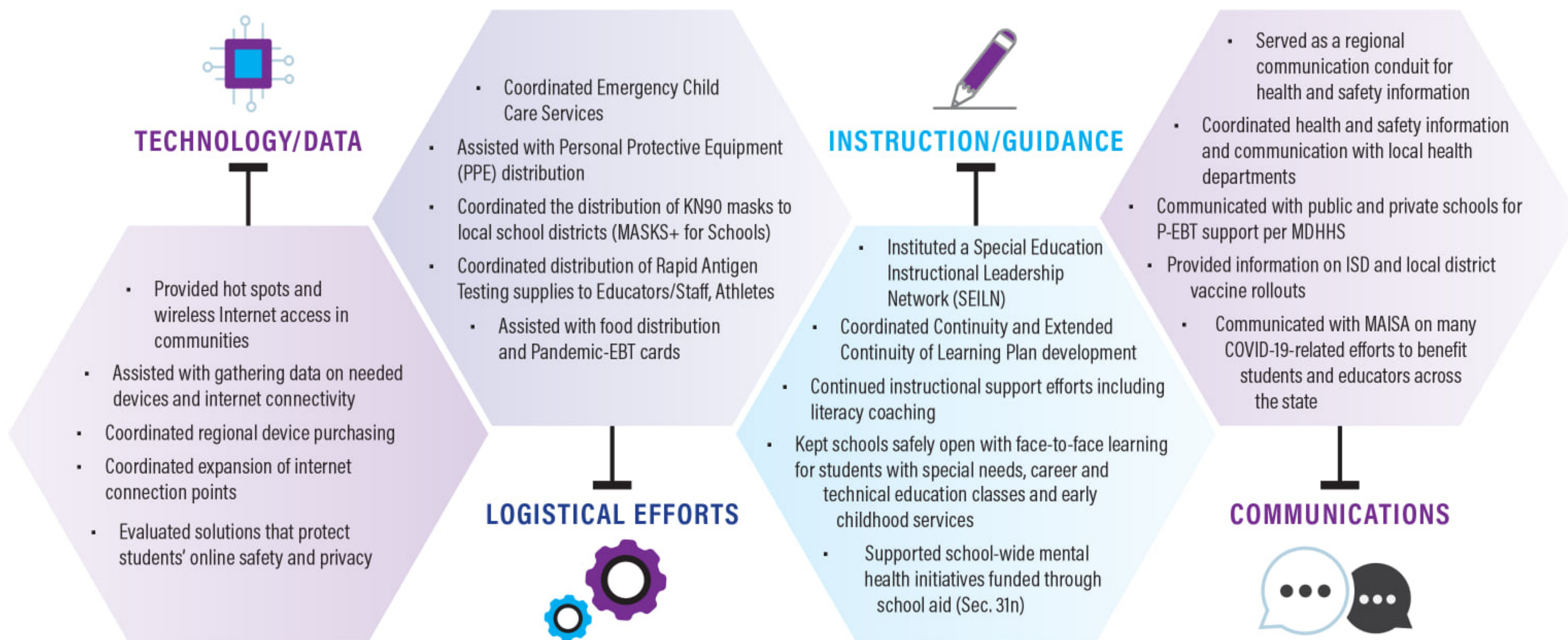


## Intermediate School Districts Continue to Lead During the Pandemic

Since the Legislature created them in 1962, **Michigan Intermediate School Districts (ISDs)** have led the way in educational innovation. They are designed to provide and coordinate essential services with their constituent school districts to facilitate teaching and learning. They also conserve resources by providing consolidated administrative services in the areas of business, technology, and health and safety.

By coordinating efforts and resources, ISDs provide specialized services to students that would not be affordable or feasible otherwise. These services can include special education, vocational training, interdisciplinary subjects, language programs, early childhood education, parent services, community involvement, transportation, extracurricular activities, lifelong learning and adult education, and other necessary and exciting benefits that are shared across districts for the success of every learner.

**Building on their decades of success, Michigan ISDs have continued to be innovative educational leaders throughout the COVID-19 Pandemic. Since March 2020, Michigan's Intermediate School Districts have:**



During this pandemic, ISDs have become the central point for coordinating information between the schools and health professionals. This has benefited the whole community; allowing for dialogue and a sense of working together.