

V-health™

BY VANTAGE LIGHTING



750-7000 Lumens
4", 6" & 8" Architectural
& MRI Downlights

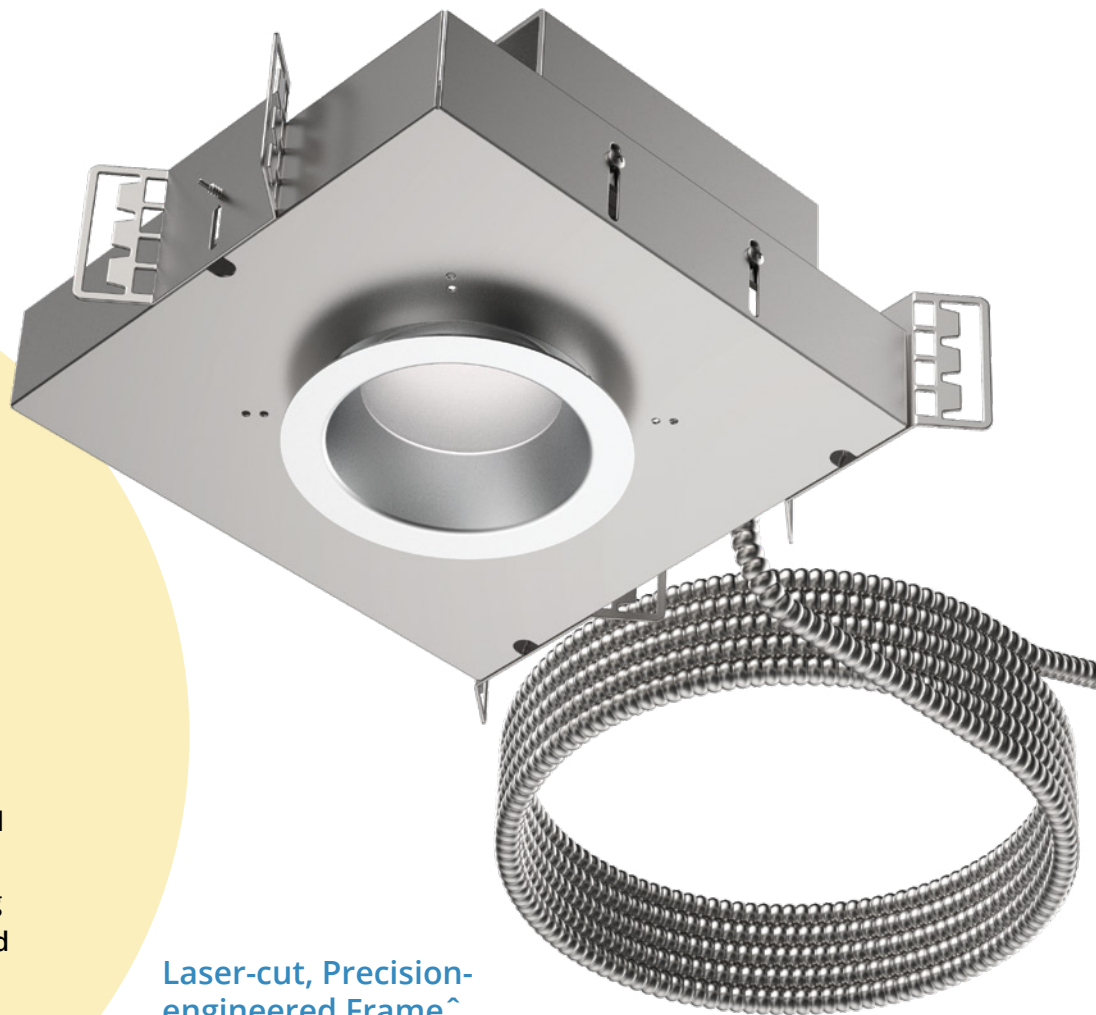
Extreme Shallow and
IC Housing Options



VHealth™ Recessed LED

Shallow prescriptions
for the modern
healthcare facility

Combining industry-leading 750-7000 lumen output, BioSync™ Color, precision BeamShaper™ optics, specification-grade reflectors and trims, smooth dimming down to black, and anti-microbial finishes, VHealth by Vantage Lighting offers a broad collection of compact, high-reliability recessed LED lighting solutions engineered and tuned to meet visual, biophilic and circadian lighting needs in healthcare environments.



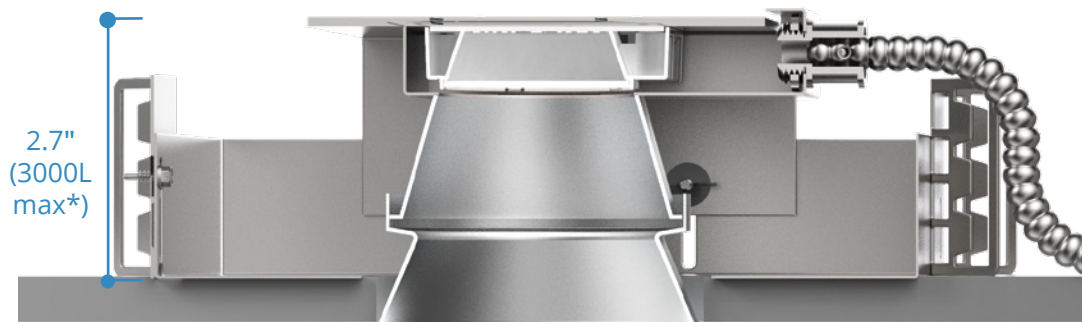
Laser-cut, Precision-engineered Frame[^]

For high-quality construction at reduced costs while simultaneously minimizing material wastes and associated environmental impact

[^]MRI units use non-ferrous housing construction.

Shallow Dimensions.

Starting at merely 2.7" deep, the VHealth family offers the shallowest, high-lumen, recessed LED solution for MRI applications on the market. Meeting shallow plenum requirements and avoiding the numerous building, communication, and medical systems above the ceiling plane are now as simple as specifying VHealth. Also available are IC-rated configurations up to 5000 lumens.



* Fixture depth = 3" at 4000L and 5000L outputs



Advanced Aluminum and Graphite Cooling Technology

For superior thermal management and long system rated life of 50,000 hours at 70% of initial lumen output ($L_{70} \geq 50,000$)

High-Flux LED Engine, 750–7000 Lumens

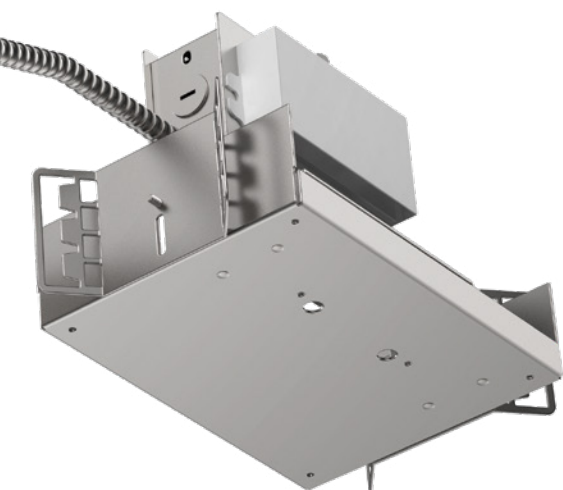
Delivers up to 107 LPW module efficacy and tight color control within 3-step MacAdam Ellipses, ensuring efficient and quality lighting solutions for both standard and high-ceiling applications

Proprietary BeamShaper™ Optics

For maximum design flexibility, with 20–80° beam angles available at 20° increments

Spec-grade Reflector and Trim Finishes

Enable matching ceiling finishes with ease, while the available anti-microbial finish options help ensure a more sanitary space

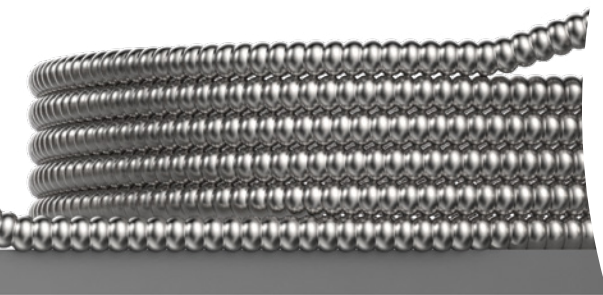


MRI
V4EVHMRI

Standard High-Performance LED Driver†

Provides 0–10V dimming down to 1%, for a reliable, flicker-free lighting control in a wide range of architectural settings

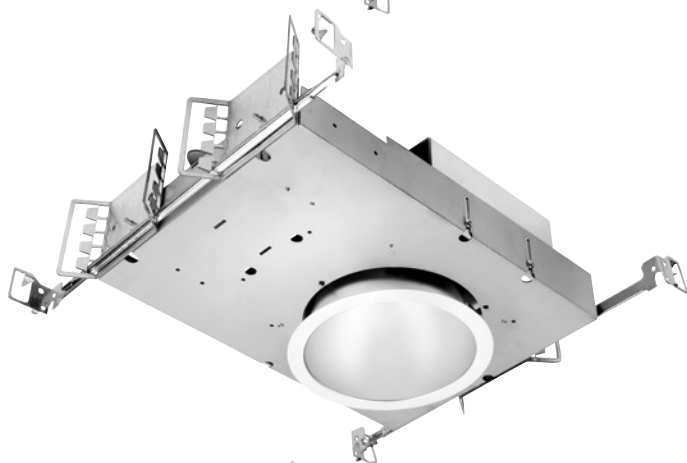
† Shown here is a remote driver available with MRI units; each is supplied with a standard 15' whip. For longer fixture-to-driver distances, consult factory.





4" Round

V4OVH-Open
V4EVH-Lensed
VIC4OVH-IC-Rated, Open
VIC4EVH-IC-Rated, Lensed
V4OVHMRI-MRI, Open
V4EVHMRI-MRI, Lensed
VIC4OVHMRI-MRI, IC-Rated Open
VIC4EVHMRI-MRI, IC-Rated Lensed



6" Round

V6OVH-Open
V6EVH-Lensed
V6WOVH-Wide Beam, Open
VIC6OVH-IC-Rated, Open
VIC6EVH-IC-Rated, Lensed
VIC6WOVH-IC-Rated, Wide Beam
V6OVHMRI-MRI, Open
V6EVHMRI-MRI, Lensed



8" Round

V8OVH-Open
V8EVH-Lensed
V8WOVH-Wide Beam, Open
VIC8OVH-IC-Rated, Open
VIC8EVH-IC-Rated, Lensed
VIC8WOVH-IC-Rated, Wide
V8OVHMRI-MRI, Open
V8EVHMRI-MRI, Lensed





4" & 6" Round Adjustable

V4OVHADJ-Open

V6OVHADJ-Open

V8OVHADJ-Open

2700K
early
morning

3500K
mid morning

5000K
noon

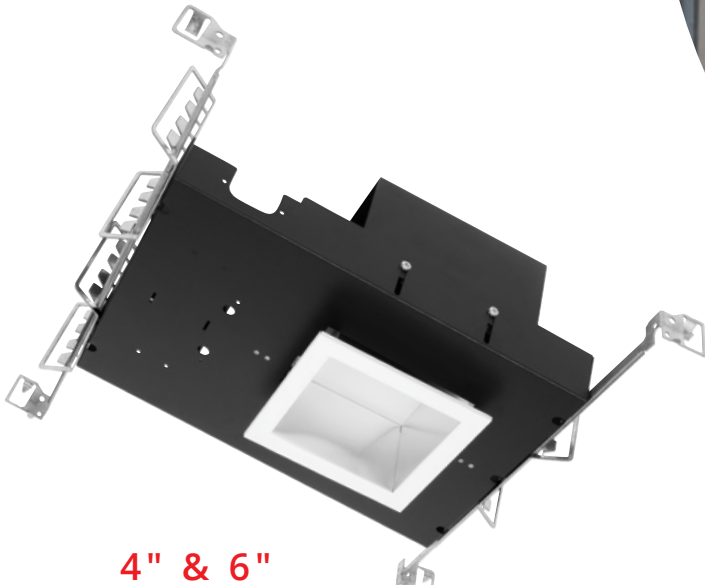
3500K
mid afternoon

2700K
evening



VHealth's BioSync™ Color is a simple and affordable tunable white lighting solution designed to bring personalized lighting to healthcare facilities through effortless color temperature adjustability between 2700K–5000K. The system delivers beautiful, high-quality light at 90 CRI, ensuring true color reproduction. Coupled with an intelligent dual 0-10V control, BioSync is easy to install and delivers smooth, flicker-free dimming all the way down to black. Combined, these features make BioSync the ideal healthcare lighting solution, especially for spaces where:

- there is an opportunity to implement **biophilic design principles** such as replicating indoors the dynamic qualities of daylight—its everchanging intensities and color qualities;
- there is a desire to implement beneficial **circadian lighting** to aid in **circadian entrainment**—the synchronization of our internal biological clock with the natural day and night or dark-light cycle;
- there are **critical visual tasks** performed such as examination of skin tone or tissue color.



4" & 6" Square

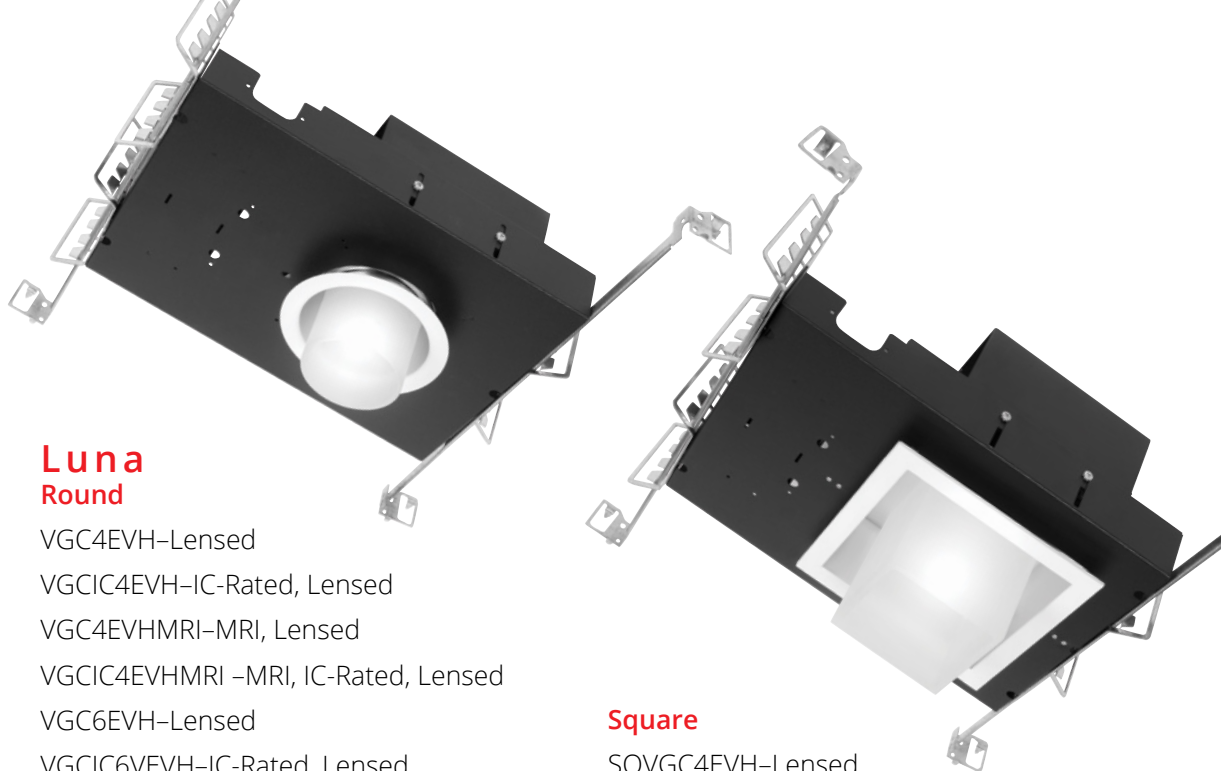
SQV4OVH-Open
SQV4EVH-Lensed
SQVIC4OVH-IC-Rated, Open
SQVIC4EVH-IC-Rated, Lensed
SQV4OVHMRI-MRI, Open
SQV4EVHMRI-MRI, Lensed
SQV6OVH-Open
SQV6EVH-Lensed
SQVIC6OVH-IC-Rated, Open
SQVIC6EVH-IC-Rated, Lensed
SQV6OVHMRI-MRI, Open
SQV6EVHMRI-MRI, Lensed



Square Wall Wash

SQV4OVHWW-Open
SQVIC4OVHWW-IC-Rated, Open
SQV4OVHWWMRI-MRI, Open
SQVIC4OVHWWMRI-MRI, IC, Open
SQV6OVHWW-Open
SQVIC6OVHWW-IC-Rated, Open
SQV6OVHWWMRI-MRI, Open
SQVIC6OVHWWMRI-MRI, IC, Open

All products come with a 5-year warranty.
Meets 'Buy American' requirements (41 U.S.C. 8301-8305)
Manufactured and Listed to UL1598, ETL and CSA standards.
Suitable for Damp Locations. Wet Location under covered ceiling.
Indoor use only.



Luna Round

VGC4EVH-Lensed
VGCIC4EVH-IC-Rated, Lensed
VGC4EVHMRI-MRI, Lensed
VGCIC4EVHMRI -MRI, IC-Rated, Lensed
VGC6EVH-Lensed
VGCIC6EVH-IC-Rated, Lensed
VGC6EVHMRI-MRI, Lensed
VGCIC6EVHMRI -MRI, IC-Rated, Lensed
VGC8EVH-Lensed
VGCIC8EVH-IC-Rated, Lensed
VGC8EVHMRI-MRI, Lensed
VGCIC8EVHMRI -MRI, IC-Rated, Lensed

Square

SQVGC4EVH-Lensed
SQVGCIC4EVH-IC-Rated, Lensed
SQVGC4EVHMRI-MRI, Lensed
SQVGCIC4EVHMRI-MRI,IC-Rated, Lensed
SQVGC6EVH-Lensed
SQVGCIC6EVH-IC-Rated, Lensed
SQVGC6EVHMRI-MRI, Lensed
SQVGCIC6EVHMRI-MRI,IC-Rated, Lensed



Round Wall Wash

V4OVHWW-Open
VIC4OVHWW-IC-Rated,
V4OVHWWMRI-MRI, Open
VIC4OVHWWMRI-MRI,
V6OVHWW-Open
VIC6OVHWW-IC-Rated, Open
V6OVHWWMRI-MRI, Open
VIC6OVHWWMRI-MRI, Open
V8OVHWW-Open
VIC8OVHWW-IC-Rated, Open
V8OVHWWMRI-MRI, Open
VIC8OVHWWMRI-MRI, Open



V♥Health™ Performance

		750	1100	1500	2000	3000	4000	5000	6000	7000
LUMEN OUTPUTS:	IC RATED									
	NON-IC									
	MRI IC Rated									
	MRI Non-IC									
	Extreme Shallow IC RATED^									
	Extreme Shallow NON-IC*									
CCT:	BioSync™ Color	<div><div>2700K 3000K 3500K 4000K 5000K</div><div>2700K – 5000K</div></div>								
CRI:		85+ 90+								
DISTRIBUTIONS:		<div><div><div>20°</div></div><div><div>40°</div></div><div><div>60°</div></div><div><div>80°</div></div></div> <p>Round Adjustables beam options: 27° or 40°</p>								
DIMMING:		0-10V, 0.1% 0-10V, 1% DMX EldoLED Dim to Dark, 0% Lutron Hi-Lume® Fade-to-Black, 1% Lutron 2-wire Lutron 3-wire Triac, 10%								
	MRI Dimming	0-10V, 0.1% Lutron 2-wire Lutron EcoSystem Fade-to-Black, 1% Triac, 10%								
LENSES:		Prismatic Acrylic		Clear Glass		Prismatic Glass		Clear Polycarbonate		Frosted Polycarbonate
FINISHES:		Anti-microbial Soft Glow Clear		Anti-microbial Specular Clear		Anti-microbial White Painted				

* 6" and 8" fixtures only
^ 8" fixtures only



181 Narragansett Park Drive
East Providence, RI 02916
p: (860) 564 4512

www.vantageltg.com