

SAMHSA 101: National and Regional Structure

CAPT Emily Williams, LCSW-PIP

Regional Administrator

Substance Abuse and Mental Health Services Administration

U.S. Department of Health and Human Services

PIHOA Meeting November 2019



SAMHSA
Substance Abuse and Mental Health
Services Administration

Region X:
Seattle
AK, ID, OR, WA
David Dickinson, MA
206-615-3893
David.Dickinson@samhsa.hhs.gov



Region VIII:
Denver
CO, MT, ND, SD,
UT, WY
Charles Smith, PhD
303-844-7873
Charles.Smith@samhsa.hhs.gov
ARA: Traci.Pole@samhsa.hhs.gov



Region V: Chicago
IL, IN, MI, MN, OH, WI
CAPT Jeffrey A. Coady, PsyD
312-353-1250
Jeffrey.Coady@samhsa.hhs.gov
ARA: Kwame.Gyasi@samhsa.hhs.gov



Region I: Boston
ME, RI, NH, MA,
VT, CT
Tom Coderre
617-565-1482
Tom.Coderre@samhsa.hhs.gov



Region VII: Kansas City
IA, KS, NE, MO
Kimberly Nelson, MPA, LAC
816-426-5291
Kimberly.Nelson@samhsa.hhs.gov
ARA: Kimberly.Reynolds@samhsa.hhs.gov



Region II: New York
NJ, NY, PR, VI
Dennis O. Romero, MA
212-264-8097
Dennis.Romero@samhsa.hhs.gov
ARA: Karina.Aguliar@samhsa.hhs.gov



Region III: Philadelphia
DE, DC, MD, PA,
VA, WV
Jean Bennett, PhD
215-861-4377
Jean.Bennett@samhsa.hhs.gov



Region VI: Dallas
AR, LA, NM, OK, TX
CAPT Karen Hearod, LCSW
214-767-0522
Karen.Hearod@samhsa.hhs.gov
ARA: Traci.Murray@samhsa.hhs.gov



Region IV: Atlanta
AL, FL, GA, KY, MS, NC, SC, TN
CAPT Michael King, PhD, MSW
404-562-4125
Michael.King@samhsa.hhs.gov

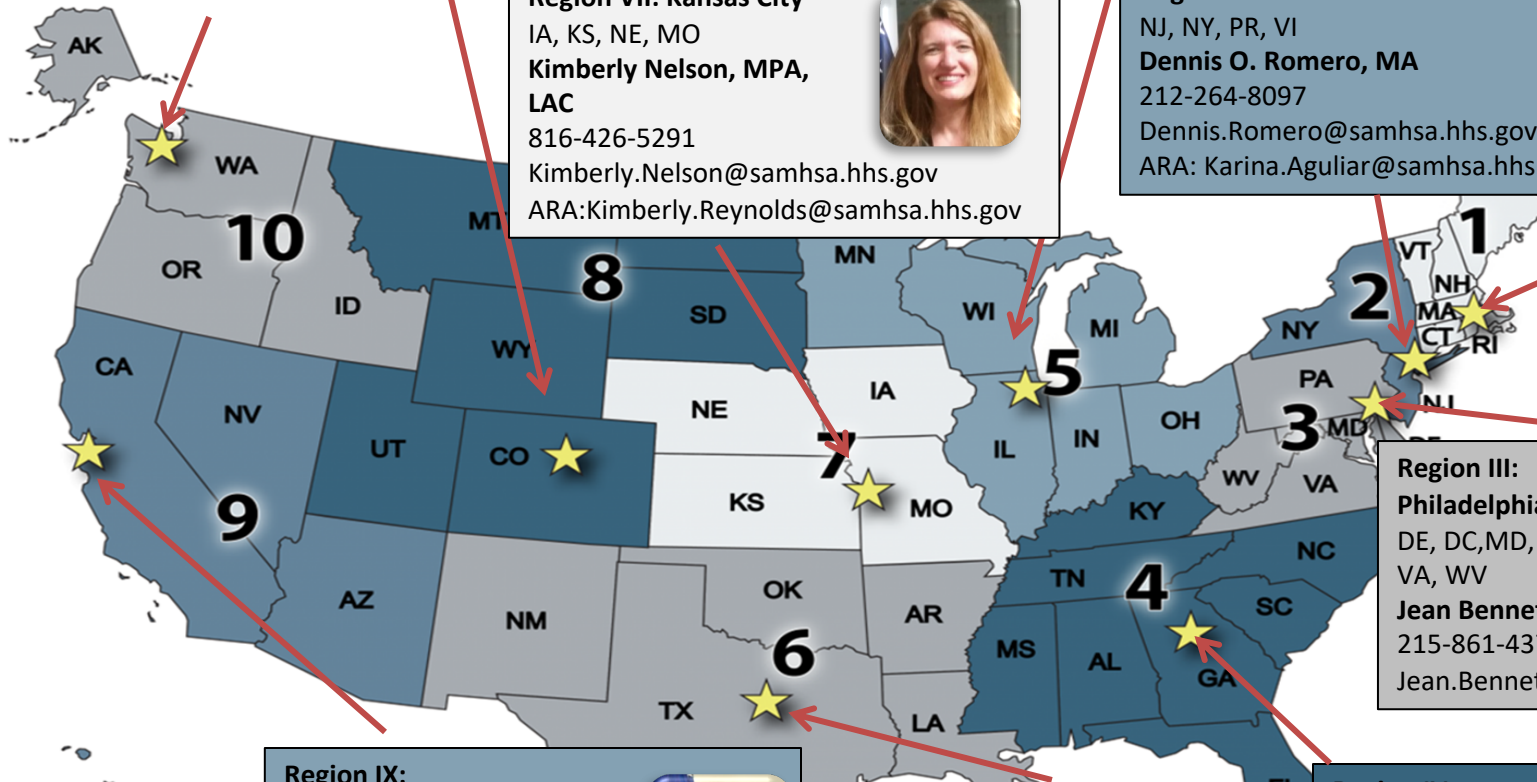


Region IX: San Francisco
AZ, CA, HI, GU, NV, AS, CNMI,
FSM, MH, PW
CAPT Emily Williams, LCSW
415-437-7600
Emily.Williams@samhsa.hhs.gov



SAMHSA
Office of
Intergovernmental and
External Affairs
Anne Herron, Director
240-276-2856
Valerie Kolick, Special
Assistant

*ARA: Assistant Regional Administrator



Roles of SAMHSA's Regional Administrators

Represent SAMHSA & Connect with Stakeholders

- Voice of SAMHSA Administrator in the regions and states.
- Educate and engage the public and key stakeholders in SAMHSA's vision, mission, Strategic Initiatives, vital few, theory of change and priorities.
- Connect the public and key stakeholders to people and resources.
- Coordinate with and support the functions of the SAMHSA POs related to grants, contracts and cooperative agreements.

Promote Initiatives & Engage Target Populations

- Contribute to the development and support of HHS/SAMHSA initiatives and activities that advance behavioral health.
- Lead strategic discussion within communities, states and regions promoting behavioral health and advancing prevention, diagnosis, treatment of and recovery from mental and substance use disorders.

Collaborate to Support HHS Regions Together

- Lead cross-agency initiatives within the region and incorporate the support and collaboration of key HHS OPDIVs and other federal partners to advance behavioral health.
- Support HHS regional initiatives championed by Regional Directors, Regional Health Administrators, and/or regional OPDIV counterparts
- Identify opportunities to increase collaboration among HHS colleagues to assure behavioral health is a priority.

Support Stakeholders

- Provide regional behavioral health leadership that supports stakeholder action, program development, policy innovation, and system transformation.
- Leverage national and regional resources and technical assistance in collaboration with headquarters.
- Assist stakeholders in expanding relationships and obtaining the information and resources they need.

Conduct & Report Regional Environmental Scan

- Prepare periodic reports to communicate important regional/state trends, issues, and policy changes that affect SAMHSA's programs, grantees, and stakeholders.
- Communicate performance success, challenges, and opportunities for improvement.

LEADERSHIP

- As part of SAMHSA leadership, participate in development and implementation of SAMHSA strategic vision, direction and policies nationally.
- Promote engagement across Centers and Offices as members of the leadership team.

Substance Abuse and Mental Health Services Administration (SAMHSA)

Mission

Reduce the impact of substance use
and mental illness on America's
communities

**Behavioral Health is
Essential to Health**

Prevention Works

Treatment Is Effective

People Recover

SAMHSA Organizational Structure

Office of the Assistant Secretary (OAS): Elinor McCance-Katz, MD, PhD

- Office of Internal and External Affairs

- Regional Offices
- Office of Behavioral Health Equity
- Office of Communications (OC)
- Office of Tribal Affairs and Policy
- Office of Disaster Behavioral Health

- Office of Management, Technology & Operations (OMTO)

- Office of Financial Resources (OFR)

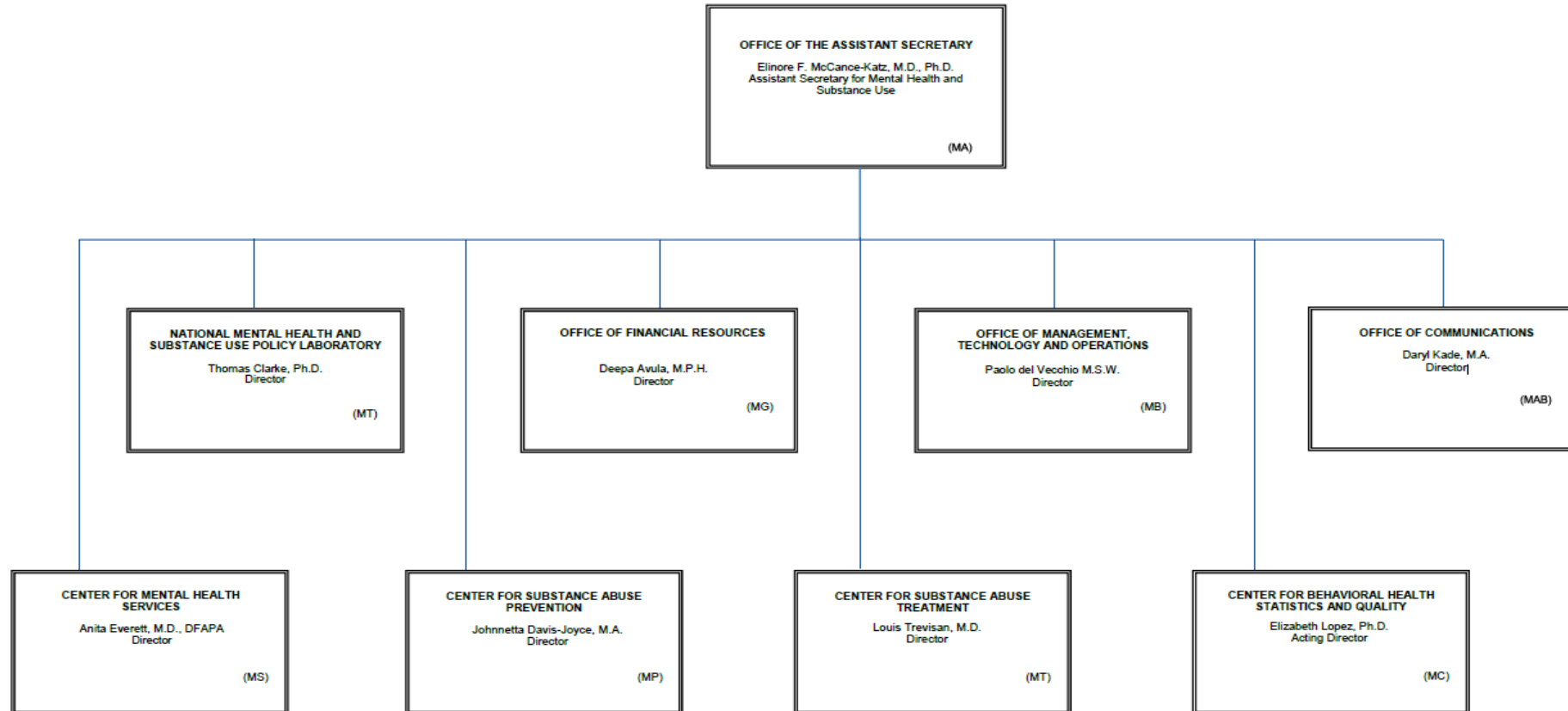
— Center for Mental Health Services (CMHS)

— Center for Substance Abuse Prevention (CSAP)

— Center for Substance Abuse Treatment (CSAT)

— Center for Behavioral Health Statistics and Quality (CBHSQ)

Organizational Structure: Substance Abuse and Mental Health Services Administration (SAMHSA)



Substance Abuse and Mental Health Services Administration (SAMHSA)

Core Principles:

1. Adoption of evidence-based practices
2. Increasing access to mental and substance use disorder services
3. Support clinicians, grantees, patients public
4. Collecting, analyzing & disseminating data
5. Behavioral health is integral to health

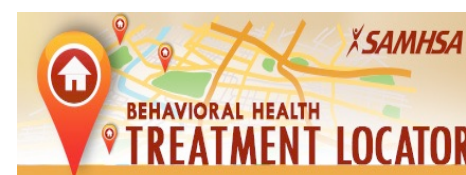
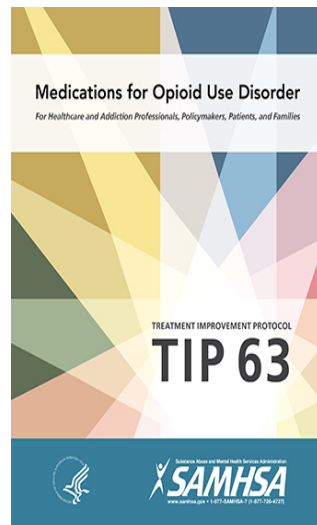
Core Priorities:

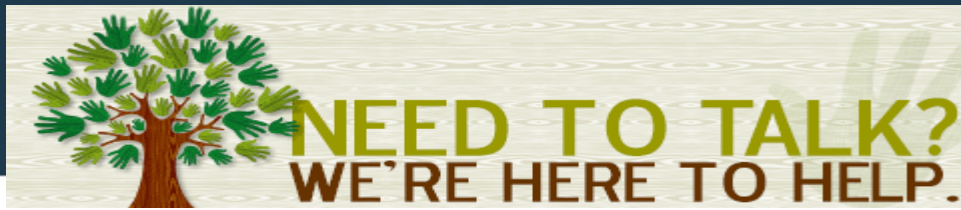
1. Combat the opioid crisis by expanding prevention, treatment, recovery services
2. Addressing serious mental illness and serious emotional disturbance
3. Advancing (broader) substance abuse prevention, treatment, & recovery
4. Strengthen provider education & training

SAMHSA Discretionary Grants (examples)

- Strategic Prevention Framework
- Partnership for Prevention
- Sober Truth on Preventing Underage Drinking Act
- Minority AIDS Initiative Continuum of Care Pilot Syringe Services
- Drug Free Communities
- Screening Brief Intervention Referral to Treatment
- Prescription Drug Abuse-Preventing Drug Overdose Death (Naloxone)
- Recovery Oriented System of Care
- Adolescent Substance Use Disorder Treatment
- MAT – Prescription Drug Overdose
- Opioid PDO program
- Addictions Treatment for Homeless
- Pregnant and Post Partum Women Program
- Mental Health Services-Jail & Prison Populations
- Offender Reentry Program
- Primary Behavioral Health Integration Grant
- Comprehensive Community Behavioral Health Center
- Project AWARE & Mental Health Awareness Training
- Garrett Lee Smith Suicide Prevention
- Supported Employment
- National Child Trauma Stress Network
- Crisis Counseling Program
- HIV/AIDS Mental Health Care
- Trauma Informed Care
- Assisted Outpatient Treatment
- Assertive Adolescent Family Treatment
- Treatment Drug Courts
- Native Connections

Examples of Opioid Resources: www.samhsa.gov & www.hhs.gov/opioid





Suicide Prevention Lifeline [1-800-273-TALK \(8255\)](tel:1-800-273-TALK)

www.suicidepreventionlifeline.org

24-hour, toll-free, confidential suicide prevention hotline available to anyone in suicidal crisis or emotional distress. Your call is routed to the nearest crisis center in the national network of more than 150 crisis centers.

SAMHSA's National Helpline [1-800-662-HELP \(4357\)](tel:1-800-662-HELP)

www.samhsa.gov/find-help/national-helpline

Also known as, the Treatment Referral Routing Service, the Helpline provides 24-hour free and confidential treatment referral and information about mental and/or substance use disorders, prevention, and recovery in English and Spanish.

Disaster Distress Helpline [1-800-985-5990](tel:1-800-985-5990)

www.samhsa.gov/find-help/disaster-distress-helpline

Stress, anxiety, and other depression-like symptoms are common reactions after any natural or human-caused disaster. Call this toll-free number to be connected to the nearest crisis center for information, support, & counseling.

Veteran's Crisis Line [1-800-273-TALK \(8255\)](tel:1-800-273-TALK)

www.veteranscrisisline.net

Connects veterans (families and friends) in crisis with qualified, caring VA responders through a confidential, toll-free hotline, online chat, or text.

Drug-Free Workplace [1-800-WORKPLACE \(967-5752\)](tel:1-800-WORKPLACE)

www.samhsa.gov/workplace/resources/drug-free-helpline

Assists employers and union representatives with policy development, drug testing, employee assistance, employee education, supervisor training, and program implementation.



Behavioral Health Treatment Services Locator

Find alcohol, drug, or mental health treatment facilities and programs around the country at findtreatment.samhsa.gov.

Buprenorphine Practitioner & Treatment Program Locator

Find information on locating practitioners and treatment programs authorized to treat opioids at www.samhsa.gov/medication-assisted-treatment/practitioner-program-data/treatment-practitioner-locator.

Early Serious Mental Illness Treatment Locator

Find treatment programs in your state that treat recent onset of serious mental illnesses at www.samhsa.gov/esmi-treatment-locator.

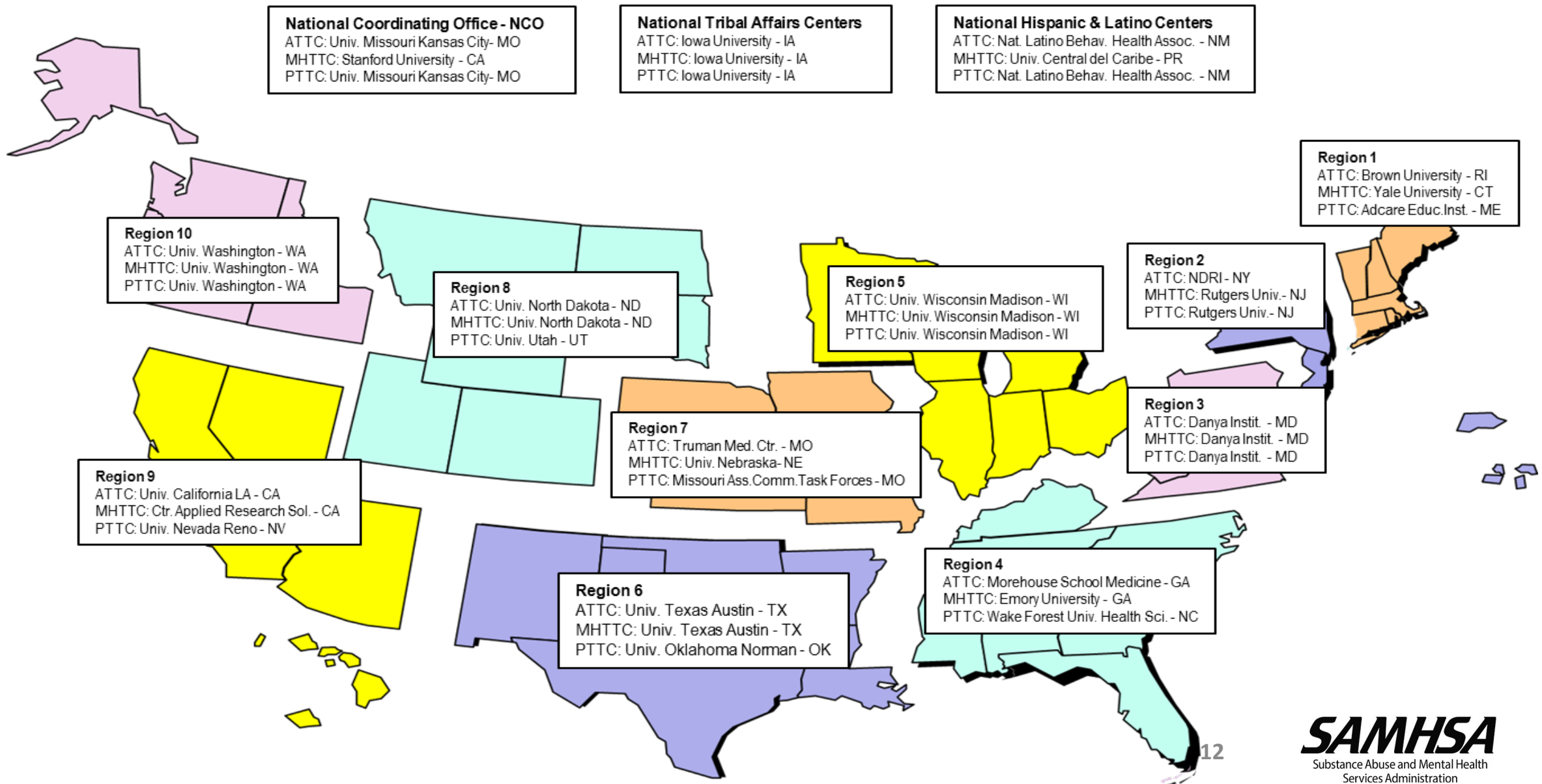
Opioid Treatment Program Directory

Find treatment programs in your state that treat addiction and dependence on opioids at dpt2.samhsa.gov/treatment/.

National/Regional Technical Assistance Centers

- Prevention Technology Transfer Center (PTTC)
 - *Western Mountain PTTC: University of Utah*
 - *American Indian/Alaskan Native PTTC: University of Iowa*
- Addiction Technology Transfer Center (ATTC)
 - *Mountain Plains ATTC: University of North Dakota/University of Nevada-Reno*
 - *American Indian/Alaskan Native ATTC: University of Iowa*
- Mental Health Technology Transfer Center (MHTTC)
 - *Mountain Plains MHTTC: University of North Dakota/WICHE*
 - *American Indian/Alaskan Native MHTTC: University of Iowa*
- Rural Opioid Technical Assistance (ROTA)
 - *Utah State University* - *South Dakota State University*
 - *Colorado State University* - *Montana State University*
- Provider Clinical Support System (PCCS): American Academy of Addiction Psychiatry
- Clinical Support System for Serious Mental Illness (CSS-SMI): American Psychiatry Association
- Center of Excellence for Protected Health Information (CoE-PHI): Cicatelli & Associates, Inc. (NY)
- Center of Excellence for Eating Disorders (CoE-ED): University of North Carolina
- Center for Integrated Health Solutions (CIHS): National Council for Behavioral Health

Technology Transfer Centers (TTC) Entities



Additional SAMHSA Technical Assistance Centers

- Suicide Prevention Resource Center (SPRC)
- Service Member, Veteran and Family Technical Assistance Center (SMVF)
- Bringing Recovery Support Services Technical Assistance Center (BRSS-TACS)
- Tribal Technical Assistance Center (T-TAC)
- National Network to Eliminate Disparities in Behavioral Health (NNED)
- National Resource Center for Mental Health Promotion & Youth Violence Prevention
- Infant/Early Childhood Mental Health Consultation Center (IECMHCC)
- National Child Traumatic Stress Network (NCTSN)
- National Center on Substance Abuse & Child Welfare (NCSACW)
- GAINS Center for Behavioral Health and Justice Transformation (GAINS Center)
- Disaster Technical Assistance Center (DTAC)
- Homeless and Housing Resource Network
- Center for Integrated Health Solutions (CIHS)
- SSI/SSDI Outreach, Access and Recovery (SOAR)

Top Region IX Behavioral Health Priorities

- Mental Health: ???
- Substance Use/Misuse: ???
- Health Promotion & Prevention:
Changing Cultural Norms / BH Literacy ???
- Access to Care: *Technology and Tele-Health ???*
- Integrative/Collaborative Care:
Primary & Specialty Behavioral Health Care ???
- Behavioral Health Practitioner
Education and Training ???
- Special Populations: *Criminal Justice, Veterans ???*

Fireside Chats



Partnership, collaboration, & information sharing are key ingredients for a ***coordinated & comprehensive*** public health model approach.