



DANIELS ERIN MILLS

our roots are grounded in erin mills

IN THE LATE 1970'S,
THE DANIELS CORPORATION'S
FOUNDER AND CEO,
MR. JOHN H. DANIELS,
PIONEERED A NEW VISION FOR
THE EMERGING 'NEW TOWN
OF ERIN MILLS'. HIS VISION FOR
WHAT WAS TO COME IN THE
CITY OF MISSISSAUGA WAS
AND STILL IS EXTRAORDINARY.
TODAY, WE ARE PROUD THAT
THE DANIELS CORPORATION
CONTINUES TO PLAY A
ROLE IN BRINGING THIS
VISION TO LIFE.

It is through this vision that we work hard to create vibrant communities rooted in values and enriched with amenities. Over the years, Daniels has built numerous successful neighbourhoods; from the award-winning condominium collection in Mississauga's City Centre to our sell-out successes at Daniels FirstHome™ communities. Known as a city builder across the GTA, we've used innovation and creativity to introduce residential landmarks such as the NY Towers community at Bayview and Sheppard in North York, Festival Tower atop TIFF Bell Lightbox in Toronto's Entertainment District, the world renowned and award-winning Regent Park revitalization in Toronto's Downtown East, and most recently Daniels Waterfront – City of the Arts – the new gateway to Toronto's East Bayfront.

As our vision for the Daniels Erin Mills master-planned community continues to take shape with the tremendous success of Arc Condominiums, we are now excited to introduce the final home ownership opportunity - **Parc Towns** to this wildly successful community.



a townhome landmark in erin mills

WELCOME TO **PARC TOWNS**, THE FINAL OPPORTUNITY TO OWN IN THE DANIELS ERIN MILLS COMMUNITY. IDEALLY LOCATED AT EGLINTON AVENUE WEST AND ERIN MILLS PARKWAY, **PARC TOWNS** OFFERS AN EXCLUSIVE LIFESTYLE FEATURING A LIMITED COLLECTION OF 19, THREE-STOREY TOWNHOMES WITH THEIR OWN PRIVATE ROOFTOP TERRACES.

Situated in an intimate enclave that offers private living surrounded by exquisite nature and directly connected to a Courtyard park, enjoy the sanctuary of lush landscapes and breathtaking views while being conveniently connected to an urban location.

Parc Towns are uniquely designed to spotlight gorgeous, private outdoor spaces on multiple levels of your home, inviting the beauty of nature into your life. On the ground floor, relish in the expansive space of your living room, then walk out onto a lovely natural patio for a breath of fresh air. Take the pleasure up a level to your personal rooftop terrace and enjoy an exclusive outdoor oasis with ample space to enjoy an alfresco dinner with the entire family under the stars.



Illustration is artist's concept. E. & O. E.

Beautifully modern and spacious inside and out, enjoy the best of high-quality contemporary features and finishes designed to create elegant style and luxurious comfort. Hone your culinary skills in a custom-designed gourmet-inspired kitchen featuring stunning quartz countertops with imported porcelain tile backsplash. Your sumptuous main bedroom located on the third floor boasts a large walk-through, walk-in closet that leads into a private ensuite, offering the utmost in luxury. Add to this the advantage of being a part of Arc Daniels Erin Mills and the privilege of sharing in all the condominium amenities. Experience the luxury of exclusive living with all the benefits of an extraordinary master-planned community.



MORE THAN
JUST SPACE TO LIVE IN,
THESE ARE SPACES
THAT INSPIRE LIVING.

Visionary and vibrant, the Daniels Erin Mills master-planned community is designed to ensure that people truly love where they live. More than just residential buildings, this exceptional community will include retail, offices and unique outdoor amenities that residents at **Parc Towns** can revel in and appreciate.

unique space that **earmarcs** living

THE COURTYARD IS A VIBRANT, open green space nestled within the centre of the Daniels Erin Mills community and conveniently connected to **Parc Towns**. Some of these towns have views overlooking the Courtyard, making it a beautiful extension of your outdoor space. This is a gathering place that welcomes the community and celebrates an animated public realm. Here, nature, wellness and creative design come together in a beautifully landscaped oasis. Groomed pathways, planters for community gardening and children's play equipment surround a central green space that's perfect for picnics, relaxing and outdoor leisure activities.

THE PLAZA



Illustration is artist's concept. E. & O. E.

STEPS FROM YOUR FRONT DOOR AT PARC TOWNS, THE PLAZA

is a dynamic and vital community space that will completely transform the southwest corner of Eglinton Avenue West and Erin Mills Parkway into the new "it" destination – a place for friends, family and colleagues to meet and spend quality time together. Along with the retail spaces on the ground floor of Arc Condominiums, the Plaza will become a unique social spot to grab a coffee, buy your groceries and catch up on local news.

The Plaza will soon be home to The Backyard Farm & Market at Erin Mills, currently located across the street from Arc Condominiums. This volunteer based, organic market will find its new permanent home in the Plaza during the summer months and truly connect this rapidly growing community.

setting a new **benchmark** in amenities



EXPERIENCE THE BEST OF AN INTIMATE LIFESTYLE WITH THE BENEFITS OF AN ABUNDANT COMMUNITY. **PARC TOWNS** GIVES YOU THE OPPORTUNITY TO ACCESS THE COLLECTION OF FANTASTIC AMENITIES AT ARC CONDOMINIUMS.

The elegant Arc Condominiums lobby provides you with exceptional 24-hour concierge service, for any of your day-to-day needs and making parcel deliveries a breeze.



4th FLOOR

- 1 OUTDOOR TERRACE
- 2 FULL-COURT GYMNASIUM
- 3 FITNESS CENTRE
- 4 BAR LOUNGE



ON THE 4TH FLOOR, residents will enjoy the full-court Gymnasium and a state-of-the-art Fitness Centre with the latest cardio, weights and aerobics equipment. The neighbouring Bar Lounge is perfect for a post workout smoothie or shake, relaxing with friends or watching the game, and is stylishly designed with lush reclining chairs and expansive floor-to-ceiling windows that look out onto the spectacular Outdoor Terrace. With BBQs, gardening plots and chic seating, the Outdoor Terrace is the perfect place to catch up on some R&R and enjoy some fresh air.

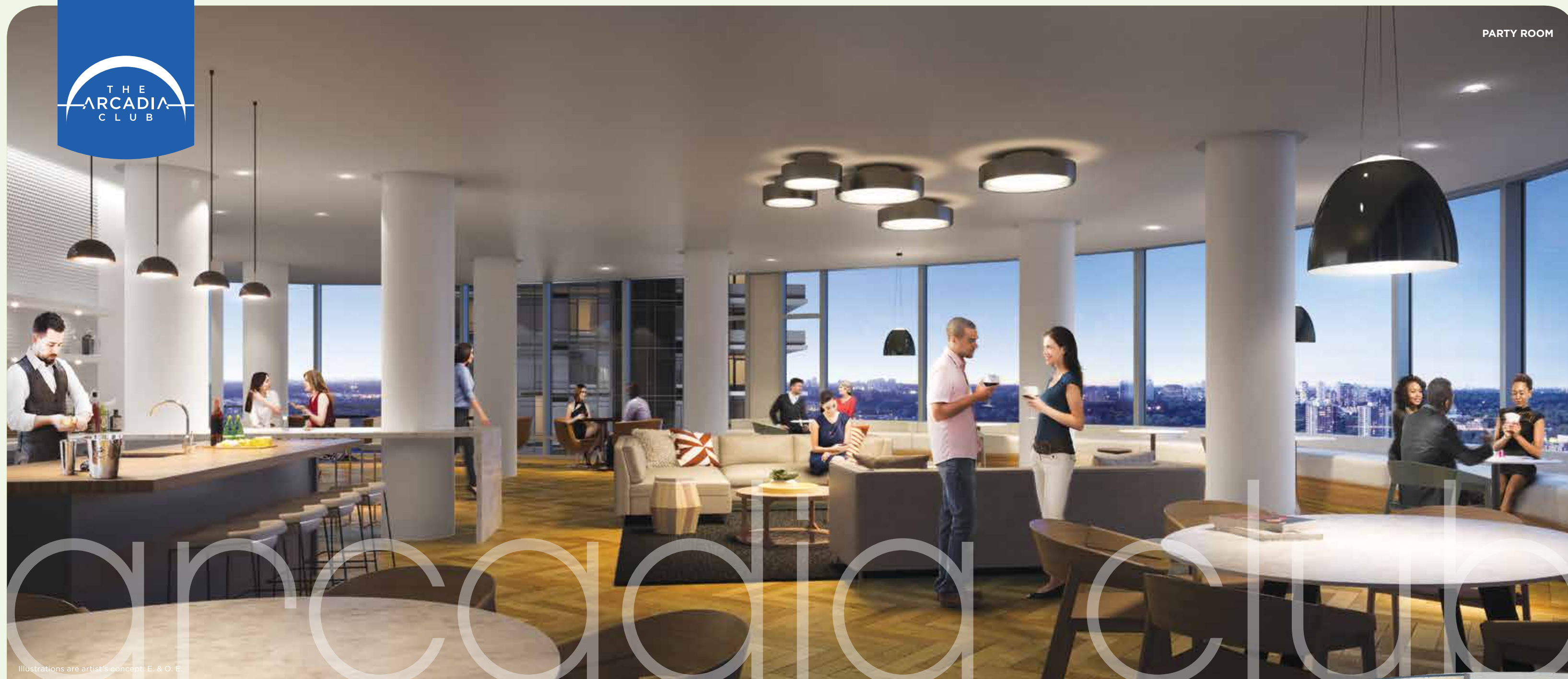


Illustrations are artist's concept. E. & O. E.

FULL-COURT GYMNASIUM



PARTY ROOM



Illustrations are artist's concept. E. & O. E.

THE 5TH FLOOR OF ARC CONDOMINIUMS is your Party Zone at The Arcadia Club – a place to entertain in a modern setting, enjoy the company of friends and make lasting memories. The Party Room features breathtaking views overlooking the Mississauga skyline. Next door is a comfortably furnished Library Lounge to enjoy a quiet moment with your favourite author. And for the benefit of your out-of-town guests, there is a beautifully furnished Guest Suite conveniently located on the same level.

5th FLOOR

- ① PARTY ROOM
- ② LIBRARY LOUNGE
- ③ GUEST SUITE





LIVING AT THE EPICENTER
OF LIFE IN ERIN MILLS PUTS
YOU JUST MINUTES FROM
EVERYTHING YOU DESIRE.

Enjoy a wealth of walking trails, soccer fields and scenic parks that invite you and your family to come out and play. There's fashionable shopping at the newly renovated Erin Mills Town Centre, along with a growing roster of brand name retailers, exquisite gourmet dining and entertainment that cater to everyone's tastes. You'll have access to state-of-the-art medical services, a multitude of schools, libraries and arenas all nearby, plus with highways 407 and 403, GO Transit and the MiWay mere moments away, you can get where you want to go with ease.

an established **trademarc** community

LEGEND

DANIELS' COMMUNITIES

- | | |
|---|---------------------------------------|
| 1. PARC TOWNS
PRESENTATION CENTRE | 8. PICKET FENCES TOWNS PH 2 |
| 2. DANIELS PLACE | 9. FIRSTHOME™ LONG VALLEY
PH 1 & 2 |
| 3. FIRSTHOME™ HAZELTON
PLACE PH 1 & 2 | 10. REFLECTIONS OF STREETSVILLE |
| 4. FIRSTHOME™ ERIN MILLS
PH 1 & 2 | 11. STREETSVILLE WALK
TOWNHOMES |
| 5. FIRSTHOME™
EGLINTON WEST | 12. DANIELS ENCORE PH 1 & 2 |
| 6. FIRSTHOME™ DESTINATION
DRIVE PH 1 & 2 | 13. THE WEST TOWER |
| 7. PICKET FENCES TOWNS PH 1 | 14. SKYRISE RENTAL RESIDENCE |
| | 15. ARC CONDOMINIUMS |
| | 16. PARC TOWNS |

AREA AMENITIES

- | | |
|---|-------------|
| ① ERIN MILLS TOWN CENTRE | ⑦ LCBO |
| ② CREDIT VALLEY HOSPITAL | ⑧ LOBLAWS |
| ③ WOODLAND CHASE PARK | ⑨ STARBUCKS |
| ④ ERIN MILLS BIG BOX STORES | 🍎 SCHOOLS |
| ⑤ QUENIPPENON MEADOWS
COMMUNITY PARK | |
| ⑥ JOHN FRASER
SECONDARY SCHOOL | |



35 years & building strong

Daniels
love where you live™

THE DANIELS CORPORATION BUILDS WITH A PASSION FOR CREATING VIBRANT COMMUNITIES IN EVERY SENSE OF THE WORD. DANIELS LOOKS BEYOND THE BRICKS AND MORTAR, INCLUDING SOCIAL, CULTURAL AND ECONOMIC INFRASTRUCTURES THAT WILL CREATE A UNIQUE SENSE OF PLACE.

Daniels has built more than 30,000 award-winning homes and apartments, within master-planned, mixed-use communities, commercial and retail spaces, and has earned its standing as one of Canada's largest and pre-eminent builders/developers. Company founder John H. Daniels is a towering figure of the North American real estate industry. In a career that has spanned over 50 years, the former Chairman and CEO of Cadillac Fairview Development Corporation has left an indelible mark on the quality of the places in which people live, work, play, create and shop.

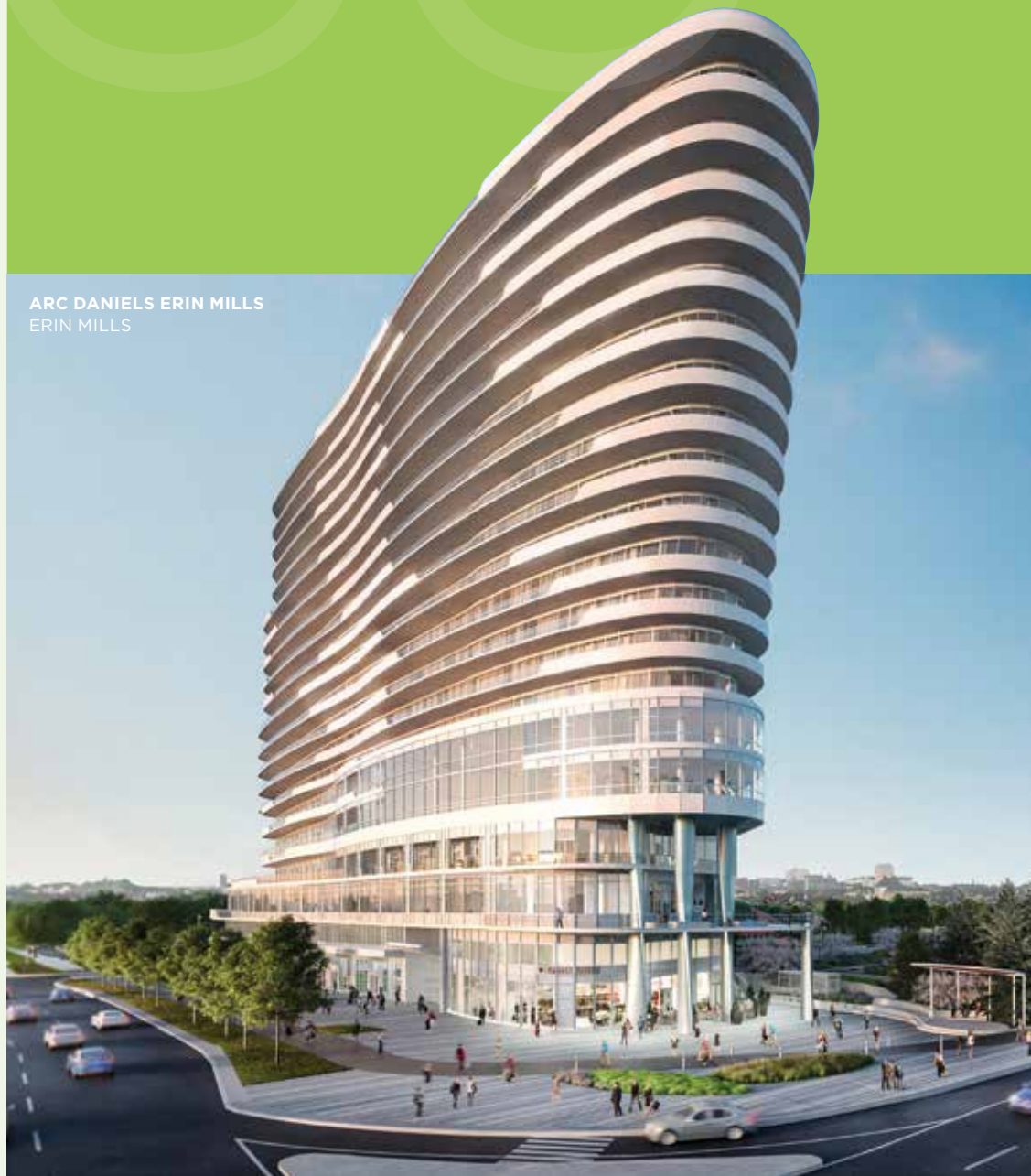


TORONTO EATON CENTRE
TORONTO



DANIELS FIRSTHOME™
COMMUNITIES THROUGHOUT THE GTA
TORONTO

ARC DANIELS ERIN MILLS
ERIN MILLS



NY TOWERS COMMUNITY
TORONTO



DANIELS ERIN MILLS WEST TOWER
ERIN MILLS



Led by company President Mitchell Cohen and a creative team of visionary professionals, The Daniels Corporation's integration of residential and commercial divisions results in a stable turnkey operation, which earns the company a high level of industry and public trust. Daniels plans, designs, develops, builds and manages all residential and commercial properties in-house, enabling the ultimate in quality control and streamlined service. In essence, Daniels is an all-inclusive service provider – a company dedicated to seeing each project through to construction completion and beyond.

building for everyone



HIGH PARK CONDOMINIUMS
TORONTO

WEAVING ARTS & CULTURE INTO THE COMMUNITY FABRIC

Daniels has consistently demonstrated the value of embedding arts and culture into the fabric of new communities. In Regent Park, Daniels partnered with Artscape, Toronto Community Housing and members of the local community to create Daniels Spectrum – a 60,000 square-foot cultural hub. Setting Daniels apart even further, the company has established an art procurement program that identifies and purchases art from local and emerging artists for residential and commercial lobbies and amenity spaces, thus contributing enormously to the area's economic development.

SUSTAINABILITY

Long before "green" became an industry buzzword, The Daniels Corporation took a proactive approach to protecting the environment through innovation in its construction techniques. Daniels continues to build for efficiency and environmental sustainability through standards beyond the Ontario Building Code, and in some cases, to LEED Gold certification. Within the Canadian building industry, Daniels is also leading the urban food revolution through trailblazing urban agriculture initiatives that incorporate farmers' markets and urban allotment gardens into its residential communities.

Dedicated to upholding a "people-first" philosophy, Daniels has long been a champion of affordable rental and ownership housing, and has built 3,600 affordable rental-housing units under several government programs. Daniels was the first developer to offer purpose-built rental housing in the Greater Toronto Area in 25 years through its Gateway Rental portfolio. In partnership with Sun Life Financial, Daniels has built a market rental building as part of its Daniels Erin Mills community in Mississauga. Daniels FirstHome™ communities across the GTA provide quality-built residences priced within the reach of first-time buyers, and at selected communities, Daniels is building seniors housing with Amica Mature Lifestyles Inc. On the commercial end of the spectrum, Daniels creates outstanding business opportunities for national brand companies as well as grassroots not-for-profit organizations. Over the past 35 years, Daniels has embraced financial and hands-on generosity toward a number of charities and non-profit organizations, including Second Harvest, Eva's Initiatives, Habitat for Humanity, and Covenant House Toronto.



ONECOLE CONDOMINIUMS
TORONTO

FESTIVAL TOWER
TORONTO



NY2 CONDOMINIUMS
TORONTO



DANIELS WATERFRONT - CITY OF THE ARTS
TORONTO

DANIELS SPECTRUM
TORONTO



DANIELS CITY CENTRE COMMUNITY
MISSISSAUGA

innovation in master-planning

Daniels transforms underutilized land into sought-after master-planned communities that include residential, name-brand retail and commercial opportunities. Daniels' land-use planning is based on the principle of integration into the existing urban fabric, creating neighbourhoods that fit seamlessly into their surroundings, providing a broad customer base of homebuyers, retailers and commercial businesses. For example, Daniels is partnering with Toronto Community Housing to revitalize 53 of the 69-acre Regent Park community in Toronto's Downtown East, which is being looked at around the world as the gold standard by which challenged urban neighbourhoods can be re-imagined as

healthy, sustainable communities. Daniels also partnered with renowned filmmaker Ivan Reitman to build TIFF Bell Lightbox, an international destination for the world of film. In addition to the iconic home of the Toronto International Film Festival, this mixed-use development includes restaurants, ground floor retail, a commercial parking garage and the 44-storey Festival Tower Residence. Daniels has also created iconic neighbourhoods throughout the GTA, providing residential, retail and commercial services within their Daniels Waterfront - City of the Arts, NY Towers and HighPark Condominium communities in Toronto, as well as Daniels City Centre and Daniels Erin Mills communities in Mississauga.



FOUR-TIME
WINNER OF THE TARON
HIGH-RISE BUILDER OF
THE YEAR AWARD

HOME
BUILDER OF
THE YEAR
AWARD

COMMUNITY OF
THE YEAR
AWARD (BILD)

GREEN DESIGN
AWARD

COMMUNITY OF
THE YEAR -
URBAN AWARD



Exclusive Listing: City Life Realty Ltd. Brokerage. Brokers Protected. Illustration is artist's concept. Specifications are subject to change without notice. All brand names, logos, images, text and graphics are the copyright of the owners, The Daniels Corporation. Reproduction in any form, without prior written permission of The Daniels Corporation, is strictly prohibited. E. & O. E.

CALL ADNAN HASHMI
BROKER OF RECORD
WOLF REALTY INC
6478856364,9057961127