



**Dr. Brennan Asplen**  
*Superintendent of Schools*

40 Orange Street  
St. Augustine, Florida 32084  
(904) 547-7500  
[www.stjohns.k12.fl.us](http://www.stjohns.k12.fl.us)

August 11, 2025

**SCHOOL BOARD**

**Beverly Slough**  
*District 1*

**Anthony E. Coleman Sr.**  
*District 2*

**Jennifer Collins**  
*District 3*

**Kelly Barrera**  
*District 4*

**Dr. Linda Thomson**  
*District 5*

Dear Elementary School Parent or Guardian,

Welcome to the 2025-2026 school year! I hope you had a wonderful summer. This letter serves to inform you of future middle and high school options for your child. It is never too early to begin consideration of your child's future educational goals, and our state requires that we inform you of these opportunities. Our programs of interest include career academies, advanced academic programs, virtual school options, Junior Reserve Officers Training Corps and the arts. More information is available at <https://cte.stjohns.k12.fl.us/programs/>.

Virtual courses may be taken during or after the school day, either at or away from your student's regular school of attendance. The next open enrollment periods to apply for St. Johns Virtual School as a full-time student are October 31<sup>st</sup> to December 5<sup>th</sup>, 2025, and in the spring, April 10<sup>th</sup> to July 10<sup>th</sup>, 2026. Enrollment in part-time virtual courses is subject to the school's normal drop/add policy. Virtual course request must be approved by a guidance counselor. To learn about all virtual options, please visit <https://www-sjvs.stjohns.k12.fl.us> or call 904-547-8080.

St. Johns County schools also offer Academically Challenging Curriculum to Enhance Learning (ACCEL) options. Options include but are not limited to:

Elementary School	Single course and whole grade acceleration; virtual instruction in a higher grade-level course; ACCEL options do not supersede initial placement by age criteria (1003.21(1)(a)2F.S.)
Middle School	High school courses in middle school; virtual instruction in a higher grade-level course; ACCEL options do not supersede the core course requirements for promotion to high school (1003.4156 F.S.)
High School	College credit via Advanced Placement, Career or College Dual Enrollment, Advanced International Certificate of Education or International Baccalaureate courses; course credit for passing state End-of-Course assessments; virtual instruction in advanced courses; early graduation; industry certifications. To see a list of articulation agreements visit <a href="https://www.fldoe.org/academics/career-adult-edu/career-technical-edu-agreements/industry-certification.shtml">https://www.fldoe.org/academics/career-adult-edu/career-technical-edu-agreements/industry-certification.shtml</a> (1003.4295 F.S.)

Finally, there are several diploma options. Designations are dependent upon a student's course of study. Details regarding the criteria for each option and graduation requirements can be found at <https://fldoe.org/schools/k-12-public-schools/sss/graduation-requirements/>.

*The St. Johns County School District will inspire good character and a passion for lifelong learning in all students, creating educated and caring contributors to the world.*



**Dr. Brennan Asplen**  
*Superintendent of Schools*

40 Orange Street  
St. Augustine, Florida 32084  
(904) 547-7500  
[www.stjohns.k12.fl.us](http://www.stjohns.k12.fl.us)

**SCHOOL BOARD**

**Beverly Slough**  
*District 1*

**Anthony E. Coleman Sr.**  
*District 2*

**Jennifer Collins**  
*District 3*

**Kelly Barrera**  
*District 4*

**Dr. Linda Thomson**  
*District 5*

This is a great deal of information to consider. As you plan, one of the first places you may wish to visit is the district Parent Resource Guide, <https://www.stjohns.k12.fl.us/families/resource/>, and the Student Progression Plan, <https://www.stjohns.k12.fl.us/families/resource/>. These user-friendly tools may promote a better understanding of the options open to your student. In addition, you can access district approved instructional materials at <https://www.stjohns.k12.fl.us/media/approved/>. You may also be interested in viewing the Florida Department of Education website that shares resources related to parental rights at <https://www.fldoe.org/ParentalRights/>.

I am proud that our schools offer so many academic choices for our students, Thank you for your consideration of this information and my best wishes to you and your family for an outstanding school year!

Sincerely,

Dr. Brennan Asplen  
Superintendent of Schools



Dr. Brennan Asplen  
Superintendent of Schools

40 Orange Street  
St. Augustine, Florida 32084  
(904) 547-7500  
[www.stjohns.k12.fl.us](http://www.stjohns.k12.fl.us)

August 11, 2025

**SCHOOL BOARD**

Beverly Slough  
District 1

Anthony E. Coleman Sr.  
District 2

Jennifer Collins  
District 3

Kelly Barrera  
District 4

Dr. Linda Thomson  
District 5

Dear Parents/Guardians,

The Student Code of Conduct is developed in accordance with the School Board's policies governing student behavior and discipline. This document is reviewed and updated annually and is distributed by each school principal, either in printed form or electronically.

We ask that you carefully review the Student Code of Conduct in its entirety and ensure that all required signature forms are completed and returned. This document includes important information related to the following areas:

- Students' Rights & Responsibilities
- Student Attendance
- Student Health
- Student Dress Code
- Grounds for Disciplinary Action
- Student-Athlete Code of Conduct
- Student Discipline and Rules of Conduct
- Student Transportation

**Please note code of conduct changes for the 25-26 school year:**

- Florida law now strictly prohibits elementary and middle school students from using electronic communication devices during the school day.

The Code includes the following forms, which must be signed and returned within five (5) days of receipt—unless they were completed as part of the online New Student or Returning Student Verification process, or through the Athletic Clearance process:

- **Parent/Student Acknowledgement of Student Rules and Regulations** – required for all students and parents.
- **Pursuing Victory With Honor Parent and Student-Athlete Agreement** – required only if a student plans to participate in interscholastic athletics.

If you have any questions regarding the Student Code of Conduct or the information outlined above, please do not hesitate to contact your school principal.

Sincerely,

Dr. Brennan Asplen  
Superintendent of Schools



**Dr. Brennan Asplen**  
*Superintendent of Schools*

40 Orange Street  
St. Augustine, Florida 32084  
(904) 547-7500  
[www.stjohns.k12.fl.us](http://www.stjohns.k12.fl.us)

August 11, 2025

**SCHOOL BOARD**

**Beverly Slough**  
*District 1*

**Anthony E. Coleman Sr.**  
*District 2*

**Jennifer Collins**  
*District 3*

**Kelly Barrera**  
*District 4*

**Dr. Linda Thomson**  
*District 5*

Dear Elementary School Parents/Guardians:

I'm writing to share the annual required instruction information, per State Board Rule. All students in grades kindergarten through 12 are to receive instruction related to youth substance use and abuse health education and child trafficking prevention and awareness (Rule 6A-1.094124, F.A.C).

These are important topics that will help our students have the knowledge and ability to act when faced with difficult situations. I believe this instruction will be extremely beneficial for your children and reinforce what is taught at home.

School counselors and classroom teachers will lead the instruction and discussions on substance use and abuse health education. Only school counselors will lead the instruction and discussion on child trafficking.

Parents, you are encouraged to access the list of instructional materials utilized in all of our schools by visiting <https://www.stjohns.k12.fl.us/media/instructional-materials/approved/>. If you have questions or would like to review available print or digital resources, please call the Instructional Resources office at 904.547.8900. I am proud of the work district staff has done to select and develop instructional materials that are age appropriate. This is statutorily required instruction, and there is no opt out for students. To learn more about the lessons, topics, and to review the frequently asked questions, I encourage you to visit our website <https://www.stjohns.k12.fl.us/mental-health/instruction/elementary/>.

As always, I thank you for the support of our schools, and your time and commitment to your children's education.

Sincerely,

**Dr. Brennan Asplen**  
Superintendent of Schools





**Dr. Brennan Asplen**  
*Superintendent of Schools*

40 Orange Street  
St. Augustine, Florida 32084  
(904) 547-7500  
[www.stjohns.k12.fl.us](http://www.stjohns.k12.fl.us)

August 11, 2025

**SCHOOL BOARD**

**Beverly Slough**  
District 1

**Anthony E. Coleman Sr.**  
District 2

**Jennifer Collins**  
District 3

**Kelly Barrera**  
District 4

**Dr. Linda Thomson**  
District 5

Dear Parents/Guardians,

The St. Johns County School District (SJCS D) is committed to safety, security, and the health and wellbeing of all students. Each St. Johns County school has an Emergency Operations Plan with incident specific procedures that is reviewed and practiced regularly. Our school district also works closely with local public safety officials using their expertise and input. Regular safety, health, security, and fire inspections take place each year in all schools. School Health Services contributes to the goals of the education system by helping to ensure that all students are healthy and ready to learn. With a nurse in every school, they function as a part of the school's team to bridge the gap between health, wellness, and learning. Per F.S. 381.0056 - School Health Services Program, school nurses work with parents, other health professionals, and school staff to provide services. For a list of services offered in school clinics and additional information, please visit the Health Services website at <https://www.stjohns.k12.fl.us/health/>. Most schools have also been designated as shelters to be used in the event of a hurricane or other emergency requiring temporary sheltering. Each school has a Safety Committee and Threat Assessment Team as well, that meet regularly to discuss issues of safety and security.

A Youth Resource Deputy (YRD) is assigned at every school. The YRD participates in the facilitation of required training, drills, and on the school's Threat Assessment Team. As prescribed in State Board of Education Rule 6A-1.0018, Active Assailant Response drills will be conducted four times each year. YRDs will also meet with students and facilitate age-appropriate discussions in the beginning of the school year focusing on Active Assailant Response procedures, the "Always Rules" and Safe Zones in the classrooms. The PowerPoint presentation for these can be viewed at <https://www.stjohns.k12.fl.us/schoolservices/safety/>. In addition, we will practice fire, tornado, AED response and bomb threat drills for all faculty/staff and students throughout the year.

Over the past few years, we have enhanced and added several security measures at our school sites. Our camera systems are actively integrated with the Sheriff's Department for their viewing during a critical incident and we have implemented a Mobile Panic Alarm System (Centegix) that gives all school staff members the ability to lock down a school as well as send notification to the Sheriff's Department's 911 Dispatch Center. We also have 800MHz radio capabilities at all schools to directly communicate with local law enforcement in emergency situations. FortifyFL continues to give all our students and families a reporting tool where they can share threats to school and district staff. This can be downloaded from any app store. Students will receive instruction on proper use. School site risk assessments continue to be conducted annually and many of our building safety initiatives such as single point of entry, electronic access, perimeter fencing, and increased signage were completed in alignment with these assessments.

As required by Florida Statute 553.865(4), schools are to maintain separate restrooms for the exclusive use of males and females, or unisex restrooms as defined by Florida Statute 553.865(3)(m). No person (student or adult) on our campus may use restrooms designated for members of the opposite sex.

*The St. Johns County School District will inspire good character and a passion for lifelong learning  
in all students, creating educated and caring contributors to the world.*



**Dr. Brennan Asplen**  
*Superintendent of Schools*

40 Orange Street  
St. Augustine, Florida 32084  
(904) 547-7500  
[www.stjohns.k12.fl.us](http://www.stjohns.k12.fl.us)

**SCHOOL BOARD**

**Beverly Slough**  
*District 1*

**Anthony E. Coleman Sr.**  
*District 2*

**Jennifer Collins**  
*District 3*

**Kelly Barrera**  
*District 4*

**Dr. Linda Thomson**  
*District 5*

Visitor and volunteer sign-in procedures are required in each school and all schools use the Raptor Visitor Management System. We require all visitors and volunteers to sign in and wear badges when visiting the school. All visitors and volunteers must submit a School Access Application in which a background check by the Sheriff's Department and a 50-state sexual offender check is completed before applicants are approved for school access.

To communicate with parents in a crisis, our mass communication system is used. We will be switching platforms this year to ParentSquare. This system provides any combination of instant telephone, text and email communication for emergency, community outreach, special events and other school/district messages.

If at any time you have concerns about the safety of your child or issues concerning safety or security, please call your child's school.

Sincerely,

Paul Abbatinuzzi  
Chief of Staff



# ST. JOHNS COUNTY **SHERIFF'S OFFICE**

**ROBERT A. HARDWICK, SHERIFF**

4015 LEWIS SPEEDWAY, ST. AUGUSTINE, FL 32084 | 904.824.8304 | [www.SJSO.org](http://www.SJSO.org)

Dear St. Johns County Families,

As another beautiful summer in St. Johns County comes to a close, the familiar rhythm of the school year returns. With that, I have no doubt you will experience the effects of our roadways and sidewalks being flooded with St. Johns County students.

At the St. Johns County Sheriff's Office, the safety of your children remains our highest priority. Our Deputy Sheriffs, once again, spent their summer in Active Shooter Trainings to ensure they feel prepared for the worst possible scenario. We also worked hard to train the many new drivers entering our roadways through our Teen Driving Experience.

However, we continue to see a troubling trend involving E-Bike crashes, many of which have resulted in serious injuries to children. While we are actively working on legislation to help address this issue, we urge families to take proactive steps now to promote safe E-Bike practices.

Please take time to talk with your children about the following safety guidelines:

- Obey traffic signals, stop signs, and speed limits
- Slow down for pedestrians
- Wear brightly colored or reflective clothing to stay visible
- Ride in the same direction as traffic
- Use front and rear bike lights at all times
- Riders under 16 are required by law to wear a properly fitted and fastened helmet — and we strongly recommend all riders wear one, regardless of age

Even if your child doesn't own an E-Bike, they may still ride one through friends or family, so it's important they understand and follow these rules. Each of us plays a role in keeping our roads safe. On behalf of the men and women of the St. Johns County Sheriff's Office, we thank you for your partnership and wish everyone a safe, successful, and enriching school year ahead.

Please reach out to me if I can be of assistance. You can email me at [sheriff@sjsso.org](mailto:sheriff@sjsso.org). For the most up to date information, find us on social media. @teamsjsso on Facebook, Instagram, X (formerly Twitter)

Sincerely,

Robert A. Hardwick  
Sheriff

Want more  
information about  
E-Bike safety  
for your family?



# Measuring the Economic Success of Florida's Graduates

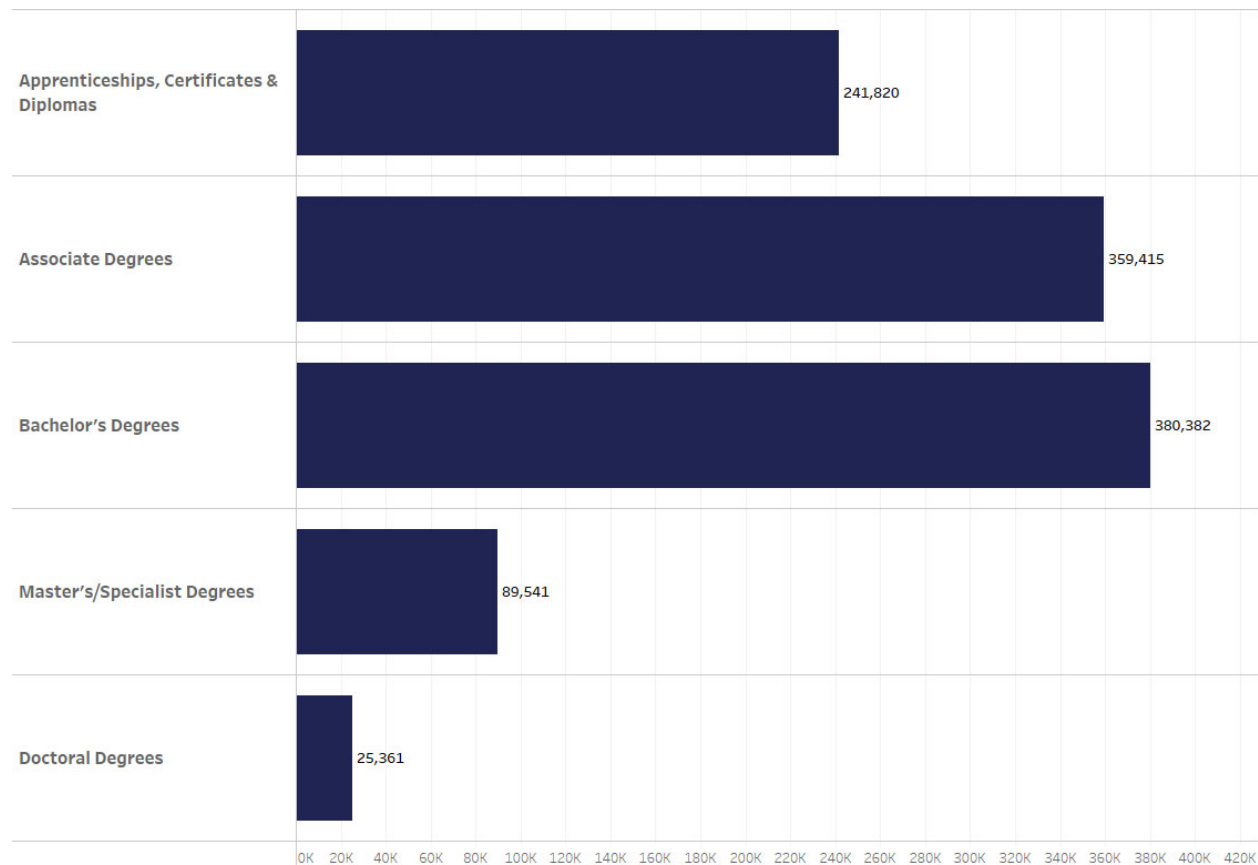
## 2024 Economic Security Report Summary

### Experience Matters

The report aims to document the variation in earnings, employment, election to continue their education, and public assistance among graduates who have earned degrees or certificates from Florida's public postsecondary education institutions. The results show that economic outcomes are primarily correlated with a student's credential level.

**Figure 1** below displays the total number of graduates for each credential type reviewed across a five-year period from academic years 2016-17 through 2020-21.

**Figure 1. Number of Graduates by Credential**



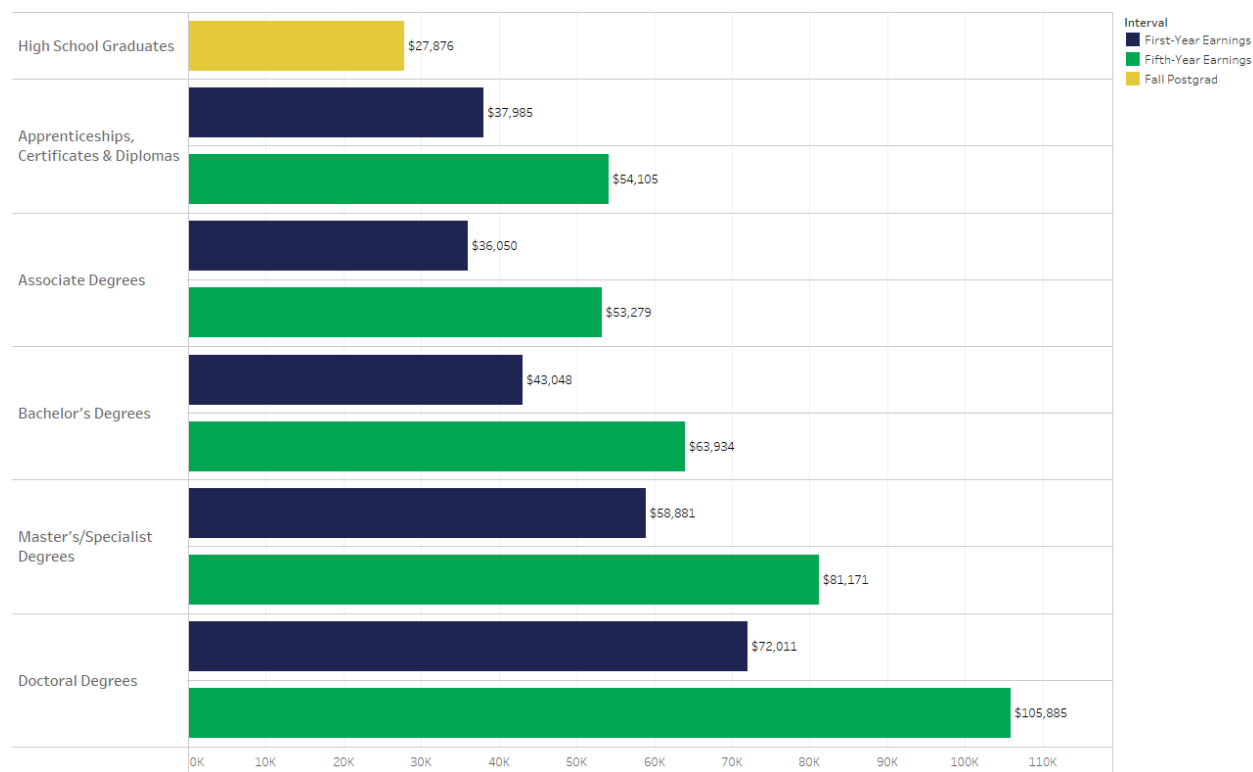
**Figure 2** displays the median first- and fifth-year salaries for all credentials awarded by Florida's public postsecondary education system. The importance of experience can be seen within the data.



# Measuring the Economic Success of Florida's Graduates

## 2024 Economic Security Report Summary

**Figure 2. Median First- and Fifth-Year Earnings by Credential (for All Institutions)**



## Student Debt

FCS and SUS institutions in Florida self-report student loan debt data to the Office of Student Financial Assistance in Florida's Department of Education. A total of \$1.56 billion was granted across 255,569 federal student loans, including all students who received Stafford, Perkins, Graduate PLUS, Parent PLUS, and TEACH program loans, was dispersed to FCS and SUS institutions in 2020-21.

## Labor Market

As Florida's population continues to increase, so will the job supply. A healthy job market will assist graduates of Florida institutions in their efforts to begin careers of their choosing. The industries expected to gain the most jobs through 2031 are Professional and Technical Services (+116,550 jobs), Food Services and Drinking Places (+100,194 jobs), and Ambulatory and Health Care Services (+98,164 jobs). Collectively, the top-10 industries in job growth are anticipated to add more than half a million new jobs through 2031. The occupations expected to experience the largest job growth through 2031 are Software Developers (+18,720), General and Operations Managers (+17,951), and Registered Nurses (+16,442).<sup>1</sup>

<sup>1</sup> Excludes occupations that require only a high school diploma or GED.



## **Procedure for School Access**

As required by Florida state law, everyone MUST have a cleared background check to go past the front office at Pine Island Academy. Your driver's license is required to enter the building at all times. A photo of your ID will not work as you will need to scan your Driver's License. You MUST have school access approval to volunteer at the school, attend any conferences or chaperone field trips.

Now is the time to go ahead and apply for school access if you have not already done so! Please make sure all spouses, grandparents, siblings over the age of 18, etc. who may visit the school are also approved to enter the building. The school access application is online at

<https://apps.raptortech.com/Apply/OTY00Tplbi1VUw==>

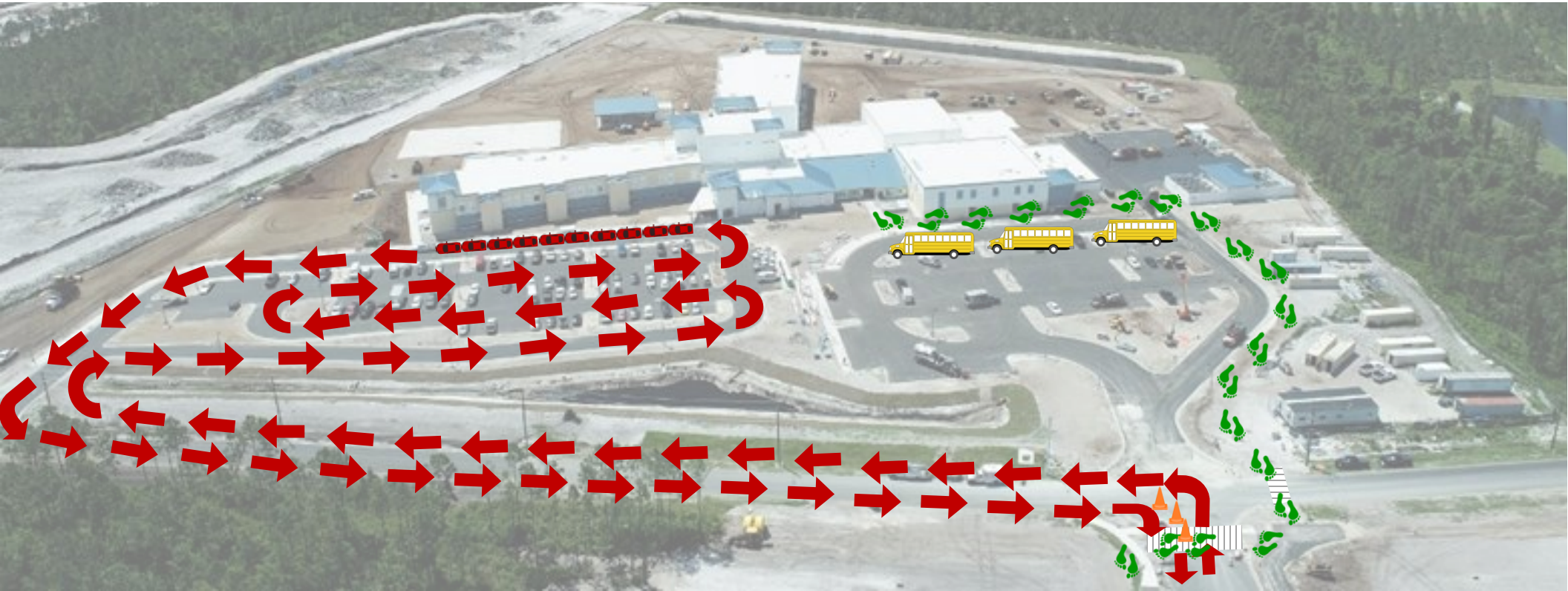
Enter all required information (including first, middle and last name). You will receive an email when your application is received and when it is approved.

The Raptor system will send you an email when your school access is expiring and will prompt you to update your application.

The front doors will remain locked during school hours. Front Office personnel will request visitors state the nature of the visit before the doors will be unlocked. If there are multiple visitors, all visitors will need to respond before being able to enter. We appreciate your patience and understanding as the safety of our students is paramount.

If you have any questions or need further assistance, please contact the front office at 904-547-4300.

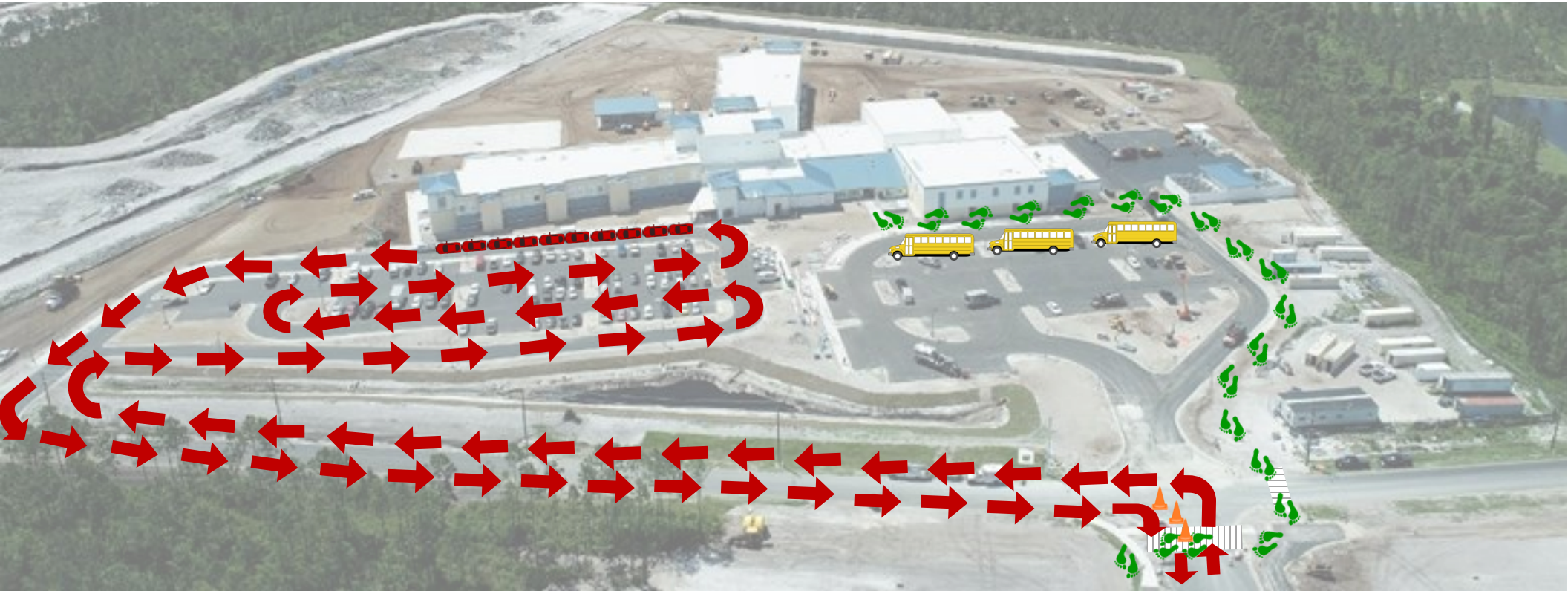
# Morning Arrival



1. Students are not to be dropped off on campus before 7:40 AM. There is no supervision until 7:40 AM.
2. There is one lane of traffic flow in the morning.
3. Please have your student ready to exit the vehicle before arriving on campus. Parents are not allowed to exit their vehicle in the parent drop off line.
4. Please do not block the crosswalks or the turn lanes at the main entrance to campus.
5. Students need to be dropped off in the parent pick line. Should the occasional need for you to walk your student to the front office, please wait for the crossing attendant to signal when it is safe for you to cross from the parking lot to the sidewalk.
6. All vehicles going to the school should stay in the left-hand lane while approaching intersection of Crosswater and Pine Island Road.



# Afternoon Dismissal



1. Students will not be released to parents walking up or parents who park in the parking lot.
2. Please do not block the crosswalks or the turn lanes at the main entrance to campus.
3. The first 10 cars can stop in the pick up area at the front of the parent pick up loop. Do not block the turn lanes at the entrance to campus or the lanes coming from the bus loop.
4. All vehicles going to the school should stay in the left-hand lane while approaching intersection of Crosswater and Pine Island Road.

## Nut Awareness

We have students within our school population that have severe nut food allergies. It is important that they strictly avoid this food in order to prevent life-threatening allergic reactions that require emergency medical treatment. To reduce the chance of this occurring, we are taking steps to provide them with a school environment that is as safe as possible. Those steps are as follows:

- Each classroom is Nut Aware to avoid exposure when possible. Individual teachers will be in contact with you if a student with severe allergy is in your student's class.
- There will be a designated Nut Free table in the café. This table will be available for students with a nut free lunch; however, preference will be given to those students with a nut allergy.

Things you can do to help the school be Nut Aware:

- Inform yourself about the dangers of food allergies, especially peanut and tree nut. The Food Allergy Research & Education organization (FARE) has a great website. [www.foodallergy.org](http://www.foodallergy.org)
- If your child has eaten any nut butter before coming to school, please be sure your child's hands and face have been thoroughly washed before entering the school. It is important that nut residue is not on a child's hands when they handle common schoolbooks and equipment.
- Avoid sending nut products to school when possible. Minimizing the number of these products in the school environment will decrease the risk of exposure. **All treats must be store bought.**

We understand that avoiding nuts can be difficult; we have provided helpful snack suggestions and a link to a food list on this page. This is not a comprehensive list and these snacks change frequently. If unsure about a particular food item, please email your classroom teacher. Thank you so much for your prompt attention to this very important matter.



# Pine Island Academy ABSENTEE FORM



\_\_\_\_\_  
(Student name – please print)

\_\_\_\_\_  
(Teacher)

was absent on \_\_\_\_\_ because  
[ date(s) ]

\_\_\_\_\_  
(please explain)

\_\_\_\_\_  
(Parent/Guardian name – please print)

\_\_\_\_\_  
(Parent/Guardian signature)

\_\_\_\_\_  
(Today's date)

Any student who has been absent from school, for an entire day or any part of a day, is to submit a PIA Absentee Form the day he/she returns to school. Absentee forms can be submitted digitally by going to our website and clicking on "Absentee Form." You can attach a doctor's note using the upload feature. You will receive email confirmation of your submission.

Absentee forms are also available in a printable format (this form) and can be completed and sent in with your student. If you have a note from a doctor, please send it in along with the Absentee Form.

Please use one form to indicate all dates of a consecutive absence as well as the cause of the absence. If your student has been out 3 (three) or more days, you will also need to provide a note from a physician.

Parents of middle school students should submit an absentee form when the student misses any period. For example, if you check your child out early for a doctor's appointment, he/she will be marked absent the remaining periods of the day. When the absentee form is submitted, the correction can be made.

This note must be turned in to the front office or submitted digitally the day the student returns to school.

If your student has been out three (3) or more consecutive days, a note from the doctor is also required.



Pine Island Academy  
Student Media Release Form  
2025-2026

Name of Student: \_\_\_\_\_

Address: \_\_\_\_\_

Parent's Email: \_\_\_\_\_ Phone #: \_\_\_\_\_

Classroom Teacher: \_\_\_\_\_ Student's Birthday: \_\_\_\_\_

.....

STUDENT MEDIA RELEASE FORM  
DIGITAL AND PRINT MEDIA

Pine Island Academy has a proud tradition of celebrating student accomplishment by sharing them with our community. For us to do so, we periodically submit press releases which include students' names and photographs to the local media or post such information on our school website or at school. Our intent is to be informative and recognize our student's achievements. We understand, however, that concerns may arrive in regards to a student's right to privacy.

**Please check one choice below:**

☐ I/We AGREE TO GRANT permission for my child's name and/or photo/image to be published on the school and/or districts website or local print media for recognition purposes.

☐ I/We DO NOT GRANT permission for my child's name and/or photo/image to be published on the school and/or districts website or local print media for recognition purposes.

☐ *If you checked DO NOT GRANT, please check here if this includes the YEARBOOK.*

Parent Signature: \_\_\_\_\_ Print Name: \_\_\_\_\_



## Elementary Physical Education Release Form 2025-2026

**STUDENT NAME:** \_\_\_\_\_

**TEACHER:** \_\_\_\_\_ **GRADE:** \_\_\_\_\_

Dear Parents,

Please complete this information below and have your child return to their classroom teacher. It is important for the P.E. teacher to be aware of any physical limitations or medical conditions your child may have.

Please check one of the areas below, sign, and date. If there is any additional information you need to share, please attach it to this form, or write it on the back.

\_\_\_\_My child may participate fully in physical education class.

\_\_\_\_My child is limited in physical education class due to the following conditions:

\_\_\_\_\_  
\_\_\_\_\_

\_\_\_\_My child is not allowed to participate in physical education class. (Please attach an official statement from your physician.)

Parent Signature: \_\_\_\_\_ Date: \_\_\_\_\_

If you have any questions or concerns, please feel free to contact Coach Anderson at [Cindy.Anderson@stjohns.k12.fl.us](mailto:Cindy.Anderson@stjohns.k12.fl.us) or Coach J at [Alexandra.Janowiak@stjohns.k12.fl.us](mailto:Alexandra.Janowiak@stjohns.k12.fl.us) or Coach B at [jennifer.bouaziz@stjohns.k12.fl.us](mailto:jennifer.bouaziz@stjohns.k12.fl.us)

**St. Johns County School District  
2025-2026 STUDENT CONDUCT CODE**

**Parent/Student Acknowledgment  
Student's Rules and Regulations of Operation**

Your signature means that you have received this Code of Student Conduct booklet and you know what the rules are.

\_\_\_\_\_  
Student Name (please print)

\_\_\_\_\_  
Date of Birth

\_\_\_\_\_  
Teacher

\_\_\_\_\_  
Grade

Students, parents/guardians, teachers, counselors, administrators, and office staffs all have important roles to play in our schools. With so many people working together, problems may occur from time to time. Rules have been made to address these problems. Like laws, rules apply to everyone, and they work only when everyone knows what they are.

This booklet lists the District rules for students in St. Johns County. The rules apply to all activities occurring on school grounds, on other sites being used for school activities and for any vehicles authorized for the transporting of students. Please read them. Since parents/guardians can be held responsible for the actions of their children, it is important that they are aware of the rules and consequences if the rules are broken. Parents, students, school faculty and staff need to know the rules.

Parents need to become involved in the education of their children and have the responsibility to provide the school with the current emergency contact person and/or telephone numbers. They also have the responsibility to notify the school of anything (such as medical information) that may affect their child's ability to learn, to attend school regularly, or to take part in school activities. As a parent, you also authorize designated St. Johns County School District personnel and St. Johns County Health Department School Health personnel to provide emergency care for your child and to exchange medical information as necessary to support the continuity of care of your child. Parents should also take special notice of the Attendance section of this Booklet as well as the Suspension and Expulsion provisions, which are in accordance with School Board Rule.

Signed forms must be part of every student's record. Your signature means that you have read this booklet and understand the rules. (It does not mean that you agree or disagree with them.)

**All forms must be signed by parent/guardian and student and returned to school.**

\_\_\_\_\_  
Parent/Guardian Signature

\_\_\_\_\_  
Date

\_\_\_\_\_  
Parent/Guardian Signature

\_\_\_\_\_  
Date

\_\_\_\_\_  
Student Signature

\_\_\_\_\_  
Date

**Health Screening Opt-Out Form 2025-2026**  
**ONLY RETURN IF YOU DO NOT WISH YOUR CHILD**  
**TO BE SCREENED.**

Dear Parents/Guardians,

In compliance with Florida Statute 381.0056 (4)(a), regarding school health services, we are notifying you that students in the St. Johns County School System will be offered the following health screenings:

Vision (Grades KG, 1st, 3rd and 6th)  
Hearing (Grades KG, 1st, and 6th)  
Height/Weight (Grades 1st, 3rd, and 6th)  
Scoliosis (6th grade only)

These screenings are offered in an effort to decrease health barriers to learning and may be performed by school nurses, other school personnel, and trained volunteers. If your child is tested and the results are not in the “normal” range for the particular test, you will be notified by letter. Your child will be screened unless you notify the school nurse, in writing by signing below, no later than August 29, 2025, that you do not want your child to participate. It should be understood that such screenings do not substitute for a thorough examination by a health care provider.

We are pleased to be able to offer programs that support the health and well being of our students. Please contact Danielle Ieraci at 904-547-4311 if you have questions or concerns.

Sincerely,  
Amanda Riedl, Principal

**ONLY SIGN BELOW AND RETURN TO THE SCHOOL NURSE IF  
YOU DO NOT WISH YOUR CHILD TO BE SCREENED.**

Please DO NOT include my child, \_\_\_\_\_, GRADE \_\_\_\_\_,  
Teacher \_\_\_\_\_, in any of the health screening process (vision, hearing, height/weight, scoliosis):

\_\_\_\_\_  
Parent Name (Printed)

\_\_\_\_\_  
Signature of Parent

\_\_\_\_\_  
Date