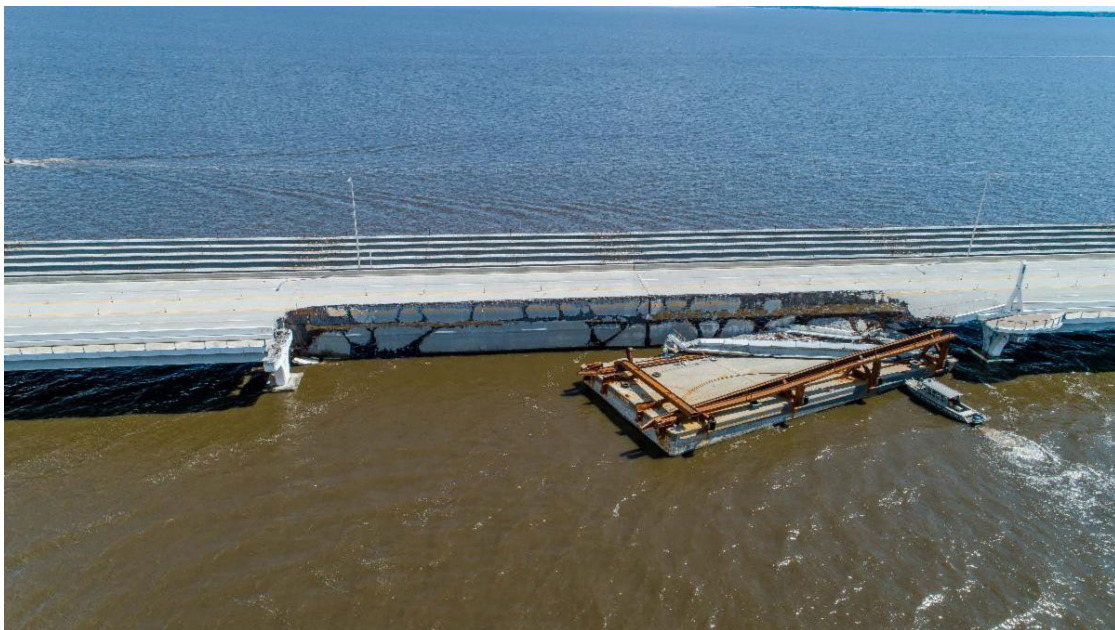




# ReConnect

## October 2020 | Pensacola Bay Bridge Repairs Underway



The Florida Department of Transportation (FDOT) and its partners have made the reopening of the Pensacola Bay Bridge a top priority. The bridge sustained significant damage on September 16 when high winds and seas associated with Hurricane Sally caused construction barges to break free of their moorings and strike the bridge.

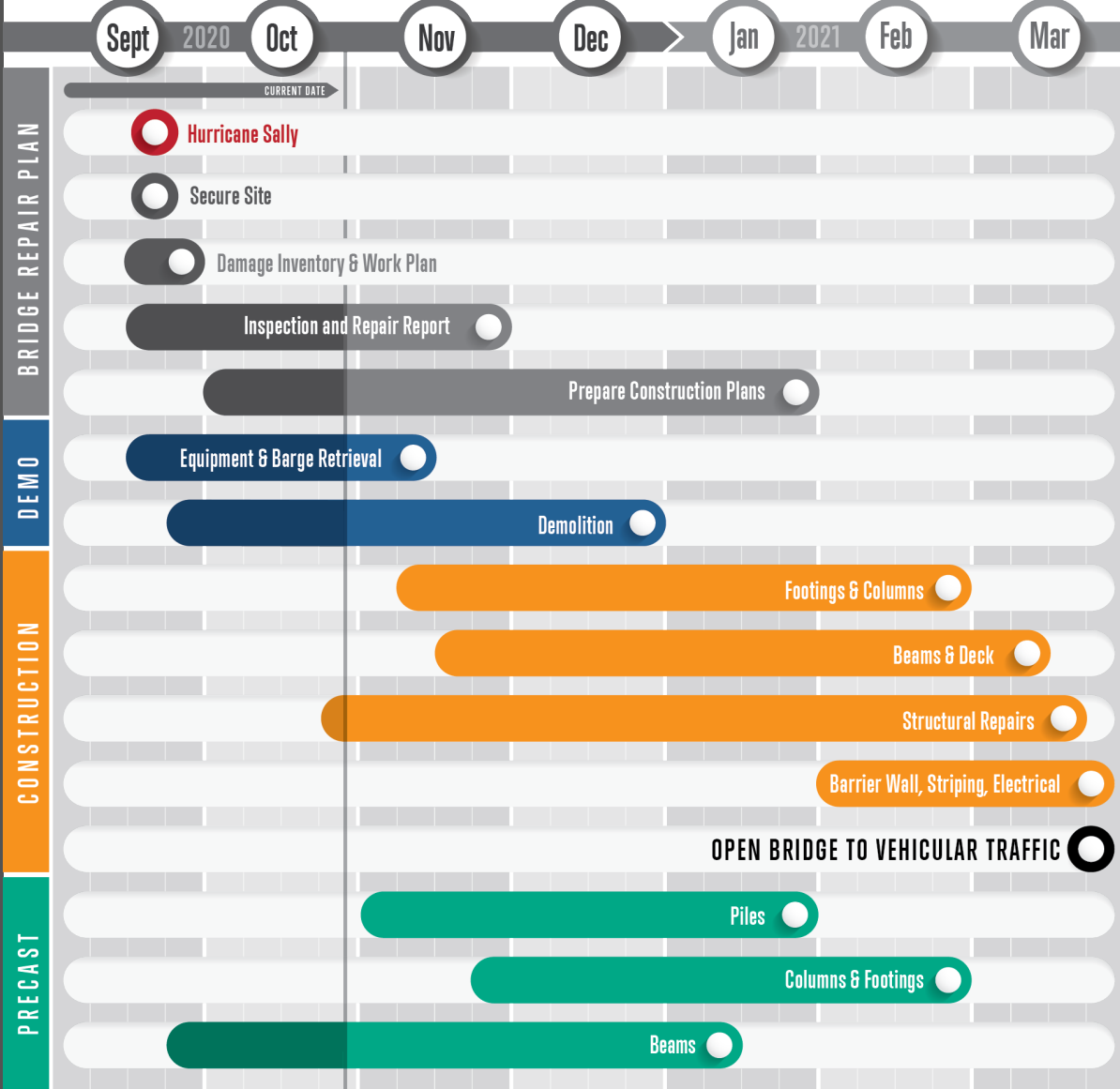
FDOT has announced that the recommended repairs to the bridge are scheduled for completion in early March 2021. Once repairs are complete, all four lanes will be open. The department will be conducting reviews to ensure the contractor is meeting milestones in the established schedule.

The following activities are complete:

- Bridge pier surveys.
- Selected topside bridge inspections.
- Removal of three of the four barges from under the bridge.
- Fabrication of twenty-five concrete beams.

Take a look at the schedule for the repair program on the next page.

# Projected Repair Timeline



# Detour Route Information



While the bridge is closed, drivers should use State Road (S.R.) 281/Garcon Point Bridge (I-10/Exit 22), and S.R. 87 (I-10, Exit 31) as detour routes. FDOT, in partnership with Escambia County Area Transit (ECAT), has established a free bus service between Pensacola, Pensacola Beach, and Gulf Breeze. The bus service will help relieve traffic congestion on the S.R. 281/Garcon Point Bridge detour.

The service begins at the ECAT Transfer Center, located at 1515 W. Fairfield Drive, at 6 a.m. and ends at Palm Beach Club, located on Pensacola Beach, with the last stop at 8:50 p.m.

The route from Pensacola Beach starts at Pensacola Beach Club at 6:05 a.m. and ends at the Pensacola Bay Center at 8:20 p.m. Buses will stop at Tiger Point Community Center, Gulf Breeze Hospital, the Boardwalk, and the Palm Beach Club. The route is approximately 43 miles, and riders should expect a trip of approximately one hour.

Bus fares remain suspended as a result of damage to the Pensacola Bay Bridge. The pick-up and dropoff locations for the free service are:

## ECAT Transfer Center

1515 W Fairfield Drive  
Pensacola, Florida

## Pensacola Bay Center Park & Ride

121 East Gregory Street  
Pensacola, Florida

## Tiger Point Community Center

1370 Tiger Point Lane  
Gulf Breeze, Florida

## Gulf Breeze Hospital

1110 Gulf Breeze Parkway  
Gulf Breeze, Florida

## Quietwater Boardwalk Parking

400 Quietwater Boardwalk  
Pensacola Beach, Florida

## Avenida 11 at Via DeLuna

127 Via De Luna  
Pensacola Beach, Florida

## Palm Beach Club

1390 Fort Pickens Road  
Gulf Breeze, Florida

Additional details, including bus times and schedules, are available at [www.GoECAT.com](http://www.GoECAT.com).

FDOT is exploring alternative transportation solutions for safely and efficiently moving people and goods through the region while the Pensacola Bay Bridge is being repaired. The department is also assisting local governments as they apply for emergency Federal relief funds.



## Barge Recovery Update

A total of 27 construction barges detached from their moorings during Hurricane Sally. Four barges struck the bridge and did significant damage. Three have been safely recovered, and recovery efforts continue for the fourth barge.

Recovery of the barges is a delicate process with crews attempting to free the vessels without further damaging the bridge.

Skanska USA, the design-build contractor for the Pensacola Bay Bridge, has dispatched a community outreach team and insurance claim specialists to assist impacted property owners. Property owners impacted by Skanska's barges or other equipment during Hurricane Sally may also contact them at [pensacola@skanska.com](mailto:pensacola@skanska.com).

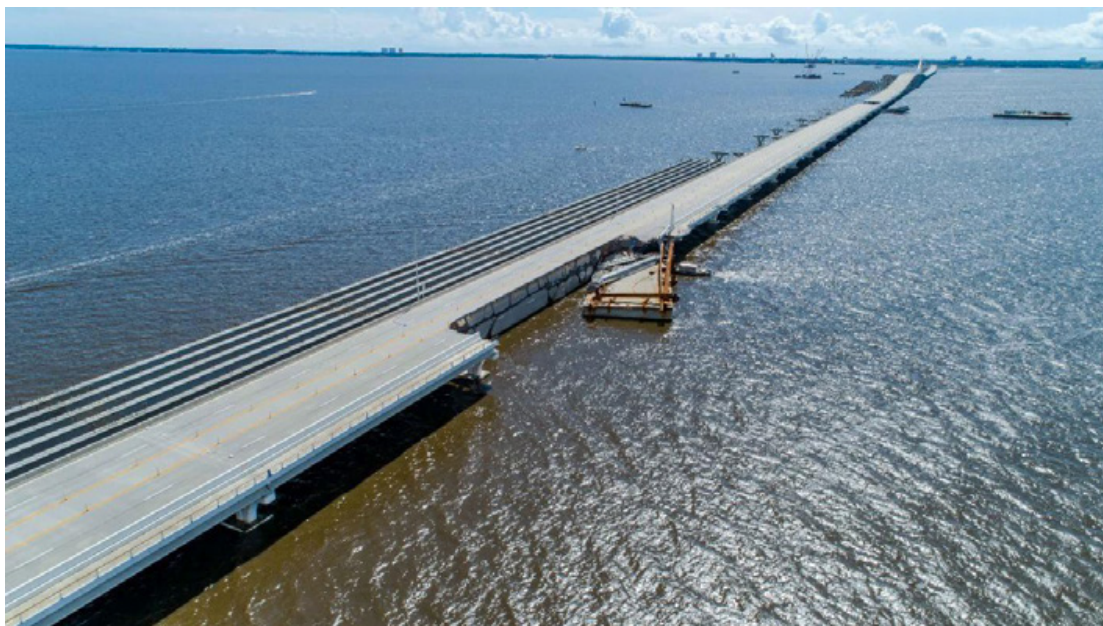


**16** out of **23** off-site barges recovered.



**3** out of **4** recovered from under the bridge.

## Marine Traffic Advisory- 500-yard buffer



The U.S. Coast Guard has established a 500-yard buffer zone that encompasses all Pensacola Bay Bridge construction activities. Vessels may use only low or idle speeds within the buffer zone.

Due to the potential for underwater hazards, boaters are advised to use caution near the bridge. The navigational channel has been inspected and is free of hazards. For this reason, crossing beneath the bridge should be done **ONLY** at the navigational channel.

## Contact Us

Questions and comments? We want to hear from you:

[info@PensacolaBayBridge.com](mailto:info@PensacolaBayBridge.com)

Stay up to date on repair news and info by visiting:

[www.fdot.gov/PensacolaBay](http://www.fdot.gov/PensacolaBay)

Find us on:



## STAY CONNECTED



Visit [www.fdot.gov/PensacolaBay](http://www.fdot.gov/PensacolaBay)



[@MyPensacolaBayBridge](https://www.instagram.com/MyPensacolaBayBridge)



[Twitter/MyFDOT\\_NWFL](https://twitter.com/MyFDOT_NWFL)



Text alerts available by texting  
key word "mypbb" to 313131



[MyPensacolaBayBridge](https://www.facebook.com/MyPensacolaBayBridge)



[info@PensacolaBayBridge.com](mailto:info@PensacolaBayBridge.com)



[Sign up for e-Newsletters](#)