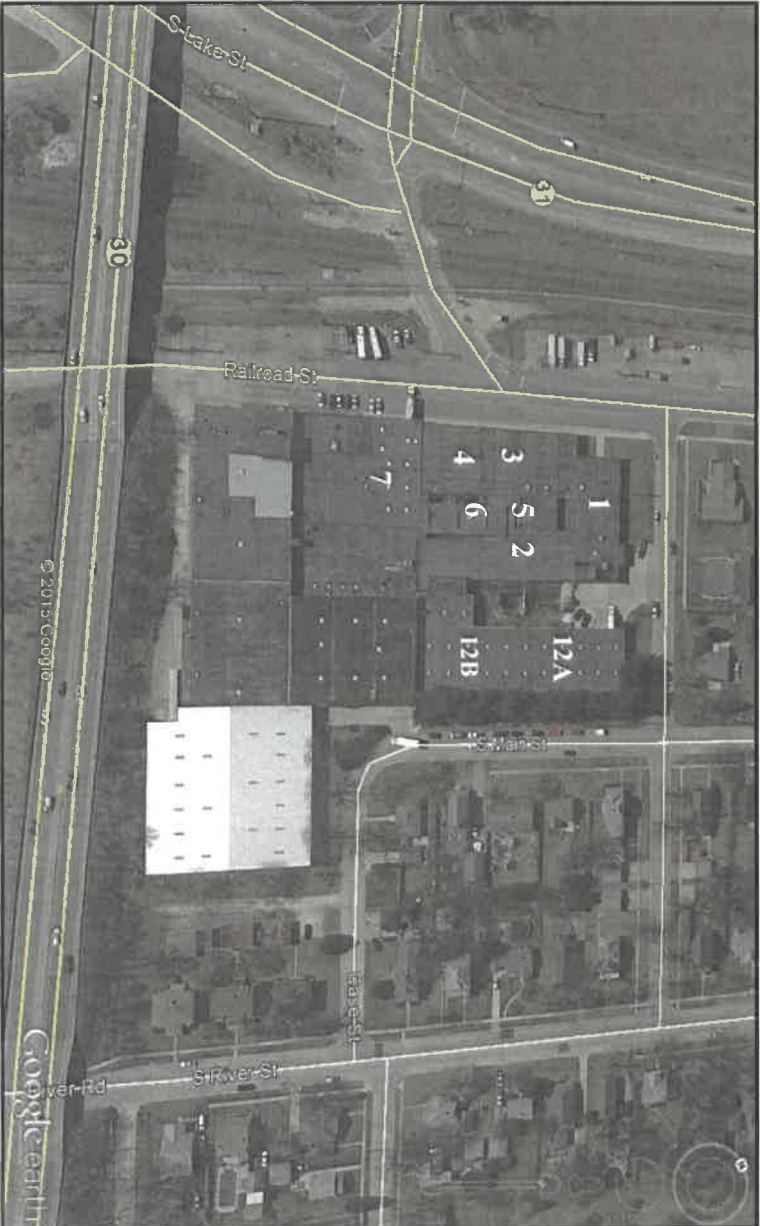
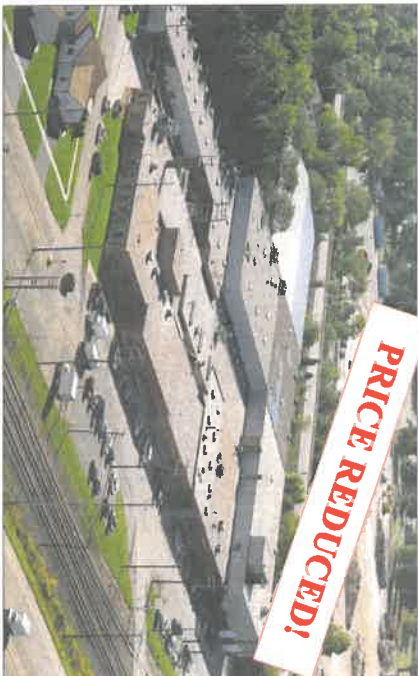




For information contact:

DOLAN & MURPHY, INC.
 630-801-8800
 Ryan J Dolan, Ext. 104
 rjdolan@dolanmurphy.com
 Brian K. Dolan/CIM Ext.102
 bdolan@dolanmurphy.com
 www.dolanmurphy.com

**FOR LEASE - 3,456 S.F. - 64,106 S.F.
 INDUSTRIAL SPACE
 625 RAILROAD - MONTGOMERY, IL**



- Bldg. 1 - 8,120 s.f.
- Bldg. 2 - 5,000 s.f.
- Bldg. 3 - 7,252 s.f.
- Bldg. 4 - 7,400 s.f.
- Bldg. 5 - 4,320 s.f.
- Bldg. 6 - 3,456. s.f.
- Bldg. 7 - 5,778 s.f.
- Bldg. 12A - 10,000 s.f.
- Bldg. 12B - 12,780 s.f.
- Can combine all units up to 64,106 s.f.
- (4) Docks (1) 12 x 15 & (1) 10 x 10 DID
- Ceiling Heights from 12'-14'
- Well located at new Rt. 31 & Rt. 30 Interchange. 5.5 miles South of I-88 E-W Tollway
- Ideal for Warehousing/Distribution/ Light Assembly
- LEASE RATE: \$3.95 Gross

This information herein has been obtained from sources deemed reliable but is subject to verification, change, withdrawal without notice, and is submitted without any warranty as to accuracy.