

Wycliffe Presbyterian Church

FOLLOWING CHRIST TO RENEW OUR CHURCH & THE COMMUNITY

2017 Annual Congregational Report

February 12, 2017



Wycliffe Presbyterian Church

1445 N. Great Neck Road
Virginia Beach, VA 23454
Phone: 757-496-2620

E-mail: office@wycliffepresbyterian.org

Website: www.wycliffepresbyterian.org

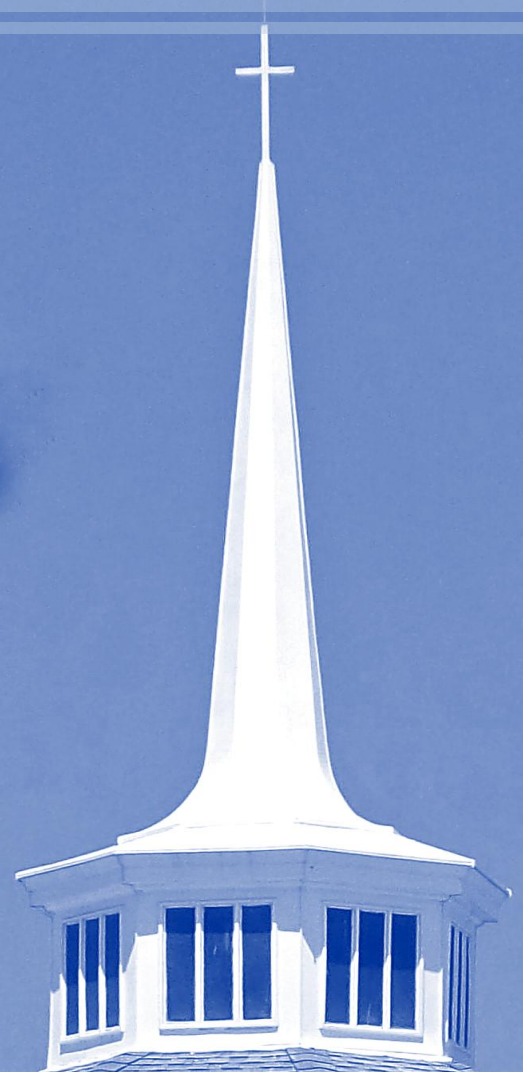


Table of Contents

AGENDA	5
APPROVAL OF CONGREGATIONAL MINUTES	7
February 21, 2016 Congregational Meeting Minutes.....	7
April 3, 2016 Annual Congregational Meeting Minutes	8
September 25, 2016 Called Congregational Meeting Minutes	9
PASTOR'S REPORT	10
ANNUAL REVIEW OF TERMS OF CALL FOR 2017	11
DIRECTOR OF MUSIC - SANDI BILLY.....	12
SESSION MEMBERS & STAFF - NAMES/COMMITTEES FOR 2017	14
WYCLIFFE'S COMMITTEES - 2016 REPORTS	16
1. Administration, Stewardship and Finance.....	16
2. Christian Education	17
3. Christian Service and Mission.....	18
4. Facilities	21
5. Fellowship	23
6. Member Care	24
7. Outreach	25
8. Worship	26
9. Personnel, Planning & Review Committee	27
A. Planning & Review – 2016 Report	27
B. Personnel.....	28
10. Nominating Committee	28
11. Columbarium Committee - Facilities	29

WYCLIFFE PRESBYTERIAN CHURCH - FINALIZED 2017 BUDGET	30
WHO YOU GONNA CALL?	35
TABLE OF ORGANIZATION FOR PC(USA), PEVA & WYCLIFFE	37
IN MEMORIAM	38

Agenda

Annual Congregational Meeting - February 12, 2017
Wycliffe Presbyterian Church

I. Call to Order and Determination of a quorum

II. Order for Opening

HYMN: In the Midst of New Dimensions

In the midst of new dimensions, in the face of changing ways
Who will lead the pilgrim peoples wandering in their separate ways?

Refrain:

God of Rainbow, fiery pillar, leading where the eagles soar,
We your people, ours the journey now and ever, now and ever, now and ever more.

Should the threats of dire predictions cause us to withdraw in pain,
May your blazing phoenix spirit, resurrect the church again.

Refrain:

God of Rainbow, fiery pillar, leading where the eagles soar,
We your people, ours the journey now and ever, now and ever, now and ever more.

Opening Dialogue:

As there are many members in one body,
so we, though many, are one body in Christ.

Where two or three of them are gathered together in my name,
there I am in the midst of them.

I urge you to lead a life worthy of the calling you have received, being humble and gentle to maintain the unity of the Spirit through the bond of peace.

Let us pursue justice and peace, for mutual up-building.

The Lord be with you.

And also with you.

Let us pray: Lord God, you taught the hearts of your faithful by sending them to the light of your Holy Spirit. Grant that we, by your Spirit, may have a right judgment in all things and evermore rejoice in His holy counsel; through your Son, Jesus Christ our Lord. Amen.

I now declare this meeting of the congregation of Wycliffe Presbyterian Church open in the name of the Father, and the Son and of the Holy Spirit. Amen

III. Old Business

- Approval of Feb. 21, 2016, April 3, 2016 and Sept. 25, 2016 Congregational Minutes

IV. New Business

- Review/Approval Terms of Call—2016
- Easement along Great Neck Road & City of VA Beach

V. Closing Prayer & Responses:

O Lord, save your people:

And bless your inheritance.

My word shall accomplish that which I please:

And it shall prosper in the thing for which I sent it.

You shall be my witnesses:

To the uttermost parts of the earth.

I have chosen you, and ordained you:

That we should go and bring forth fruit and that your fruit should remain.

And lo, I am with you always:

To the end of the age.

Glory be to the Father, and to the Son, and to the Holy Spirit:

As it was in the beginning is now and ever shall be, world without end,

Amen

The Lord be with you.

And also with you.

Let us pray: Direct us, O Lord, in all our doings with your most gracious favor and further us with your help, that in all our works, begun, continued, and ended in you, we may glorify your holy name and finally by your mercy, obtain everlasting life, through Jesus Christ our Lord. Amen.

HYMN: A Mighty Fortress

A mighty fortress is our God, a sword and shield victorious;
He breaks the cruel oppressor's rod and wins salvation glorious.
The old satanic foe has sworn to work us woe?
With craft and dreadful might he arms himself to fight.
On earth he has no equal.

God's word forever shall abide, no thanks to foes, who fear it;
For God himself fights by our side with weapons of the Spirit.
Were they to take our house, goods, honor, child, or spouse,
Though life be wrenched away, they cannot win the day.
The Kingdom's ours forever!

Approval of Congregational Minutes

February 21, 2016 Congregational Meeting Minutes

Wycliffe Presbyterian Church

1445 N. Great Neck Road, Virginia Beach, VA 23454

The Annual Congregational Meeting of Wycliffe Presbyterian Church of Virginia Beach, Virginia was held in the Sanctuary - 1445 N. Great Neck Road, Virginia Beach, VA --- Feb. 21, 2016 at 11:10 am, after the worship service. The meeting was to review and approve 2016 Terms of Call for Pastor Bugg, share the 2016 Annual Congregational Report & approve the Sept. 20, 2015 minutes.

PRESENT: A quorum of the congregation was present.

MODERATOR: The Moderator, Rev. Bugg & Clerk of Session when Terms of Call reviewed, discussed and voted upon.

Pastor Bugg called the meeting to order, established there was a quorum and opened the meeting with prayer stating the purpose of the meeting was

- Present the Annual 2016 Congregational Report to the congregation
- Review & approve the Sept. 20, 2015 Congregational meeting minutes

Minutes Approval

- **On motion made** by Madeline Kuhlman, seconded & carried, the congregation approved the Sept. 20, 2015 Congregational Minutes. (2016 annual report - p. 7)

At this time Pastor Bugg excused himself & family and The Clerk served as moderator to review, discuss and vote on the 2016 Terms of Call.

2016 Terms of Call

- **On motion made by** Steve Hackney seconded & carried, the Congregation approved the 2016 Terms of Call for Pastor Bugg. (2016 annual report - p. 9)

Pastor Bugg returned as moderator. Encouraged the congregation to read and review the report.

- **On motion made by** Tom Carter and seconded & carried the Congregation closed the meeting.

Pastor Bugg closed the meeting with prayer and song and meeting ended @ 11:25 am.

Gail C. Schwartz -- Clerk of Session

Moderator - Rev. Garrett Bugg

Date Approved --- COS initials

April 3, 2016 Annual Congregational Meeting Minutes
Wycliffe Presbyterian Church
1445 N. Great Neck Road, Virginia Beach, VA 23454

The Annual Congregational Meeting of Wycliffe Presbyterian Church of Virginia Beach, Virginia was held in the Sanctuary - 1445 N. Great Neck Road, Virginia Beach, VA --- April 3, 2016 at 11:10 am, after the worship service. The meeting was to review and approve the Nominating Committee for 2016.

PRESENT: A quorum of the congregation was present.

MODERATOR: The Moderator, Rev. Bugg & Clerk of Session when Terms of Call reviewed, discussed and voted upon.

Pastor Bugg called the meeting to order, established there was a quorum and opened the meeting with prayer stating the purpose of the meeting was

- Elect the 2016 Nominating Committee

Jodi Rossman presented the suggested Nominating committee:

NAME

Pat Carney	Ruth Hogan
Alison Bugg	Bob Prestridge
Carol Marinak	Bill Wahab
Betty Douglas	Marsha Miles
Steve Hackney	Nancy Dabney
David Gangwer	Jane Anne Murphey
Jodi Rossman - Chair	
Gail Schwartzer - co-chair	

Floor was opened for other nominations. There were none.

- On motion made by Jim Haynie seconded & carried the congregation approved the Nominating Committee above.

Minutes Approval

- **On motion made** by Madeline Kuhlman, seconded & carried, the meeting was closed at 11:20.

Gail C. Schwartzer -- Clerk of Session

Moderator - Rev. Garrett Bugg

Date Approved --- COS initials

September 25, 2016 Called Congregational Meeting Minutes

Wycliffe Presbyterian Church
1445 N. Great Neck Road, Virginia Beach, VA 23454

The Called Congregational Meeting of Wycliffe Presbyterian Church of Virginia Beach, Virginia was held in the Sanctuary - 1445 N. Great Neck Road, Virginia Beach, VA --- September 25, 2016 at 11:10 am, after the worship service. The meeting was to review and elect elders for the class of 2017-2020.

PRESENT: A quorum of the congregation was present.

MODERATOR: The Moderator was Pastor Bugg.

Pastor Bugg called the meeting to order, established there was a quorum and opened the meeting with prayer stating the purpose of the meeting was

➤ To review and elect the new class of elders for the class of 2017-2020.

Jodi Rossman, Chairman of the nominating committee described the nominating process & method of selection by the Nominating Committee. She also introduced the candidates approached by the committee and who agreed to serve:

Darrell Kennedy	Lisa Sowell
Robin LaVigne,	Chuck Steenburgh
Carolyn Lindsey	Lee Uittenbogaard

Floor was opened for other nominations. There were none.

- On motion made by Steve Hackney, seconded & carried the congregation approved closing the floor for nominations.
- On motion made by the Nominating Committee and carried the congregation elected the above candidates as elders for Wycliffe 2017-2020.
- On motion made by Gail Schwartzer, seconded and carried the congregation closed the meeting.

The Moderator, Pastor Bugg, closed the meeting with prayer @ 11:15am.

Gail C. Schwartzer -- Clerk of Session

Moderator - Rev. Garrett Bugg

Date Approved --- COS initials

Pastor's Report

Dear Friends,

Wow! What a year. Together, we've weathered snows, hurricanes, a divisive election season, and yet through it all the still small voice of God has guided us. That still small voice is evident in the accomplishments of the past year, in our worship and in our celebration of baptism and communion. The still small voice of God whispered over retreats for our youth and cut through the loud sounds of children bonding in Kids Club. The peaceful whisper of God's presence permeates the city's use of our building for the Infant Program and the Art Therapy program in the Red House. In the quietness of a church full of sleeping homeless, the work of many hands, the bags of food, the gifts of grace, the voice of God could be heard.

So let me, at the conclusion of one year and the beginning of another express my thanks to our church staff—to Mary Lou, who administers well; to Sandi, who directs well; to Jim, who maintains well. Your work is a valuable part of Wycliffe Presbyterian Church fulfilling its mission, and I thank God for your presence here every day. I want to further recognize our Clerk of Session who is valiant in her efforts to organize and order the official record of church life, our Elders, whose leadership of committees keeps Wycliffe functioning and moving in the right direction. And finally, a huge thank you to the congregation whose stewardship of time, talents, and financial resources give flesh to the ministry of Jesus Christ. May you continue to embody God's grace and humble service through your participation in all our ministries.

As we look to a new year, I am mindful and thankful for the continuing support all of you have shown as Ali and I welcome a new child to the world. I am thankful of your support for my continued education as a Doctoral Student at Lancaster Theological Seminary. I am thankful of your support, too, for the work of the Wycliffe Institute of Pastoral Care, our local Clinical Pastoral Education Program. Two units were run in 2016 involving seven students. I hope to run additional units of CPE in 2017 and perhaps even bring in a Seminary Student pastor or an intern this autumn.

We at Wycliffe are committed followers of Jesus Christ, we come from every background and have had a myriad of different experiences in life. The richness of the community here is founded in the relationships deepened in the sharing of our journeys of faith. If it weren't so, how could ever hope to *live and share the good news of Jesus Christ?*

Sincerely,

Pastor Bugg

ANNUAL REVIEW OF TERMS OF CALL for 2017

Church Name: Wycliffe Presbyterian

City: Virginia Beach, Virginia

Name of Pastor: Reverend Garrett Bugg

That you may be free to devote yourself full-time to the ministry of the Word among us, we promise and obligate ourselves to provide you the following:

	2016	2017
1. TOTAL EFFECTIVE SALARY (Housing & Salary)	\$71,875.00	\$73,157.00
2. Professional Reimbursement Exp. (Minimum \$2700)	\$2,700	\$2,700
3. Continuing Education Allowance (Minimum \$1,000)	\$ 1,000	\$ 3,000
4. Study Leave	2 weeks	2 weeks
5. Vacation	4 weeks	4 weeks
6. Sabbatical Leave in accordance with established Presbytery policy. <i>(After 6 consecutive years of service, pastor is eligible for a 3 month sabbatical leave to be approved both by the session and COM 6 months prior to leave.)</i>		
7. Sabbath Policy in accordance with established Presbytery policy. <i>(Pastor receives 1 day off weekly to compensate for work/ activities occurring every Sunday.)</i>		
8. Parental Leave in accordance with established Presbytery policy. <i>(4 weeks)</i>		
9. Holidays and Sick Leave in accordance with established Presbytery policy. <i>(Holidays = 12/year; Sick Leave - one day a month, cumulative to sixty days.)</i>		
10. Full participation in PC(USA) Medical/Pension program.		
11. We further promise and obligate ourselves to annually review these Terms of Call and the Covenant with an evaluation of the mutual achievement of mission goals by minister and session as to their adequacy w/serious consideration given to the current adjusted median family income.		

Director of Music - Sandi Billy

In Ecclesiastes we read “to everything there is a season . . .” and we have felt the mark of time deeply in the Worship Arts ministry this past year. While the work of worship continues without fail, there have been many occasions when we have felt the pain of loss very deeply.

The death of faithful choir members Harry Kuper and Lloyd Robertson, and the retirement of Manning Merritt and Maggie Timm left a huge hole in the soul of the choir. These faithful members made the music program a priority in their church service for dozens of years; since Wycliffe was founded for some, and to lose their beautiful voices, steady presence, creative spirits, and recruitment, encouragement and support of new singers, as well as their guidance to a host of directors through the years, has been a challenge for remaining members to overcome. In addition, our contemporary ensemble, *Another Day Dawning*, has struggled with loss, too, as it has worked through the retirement of its talented and devoted keyboard player, June Beeler.

The church has been blessed with several professional singers who provide wonderful support and continuity for our volunteer musicians, but four of those also left during 2016 to pursue other positions. Denise Battle moved to a church closer to her home and Elise Krepcho had to make a change to accommodate family responsibilities. They were a fine asset to the program and brought a warm and loving attitude to their service. Shannon and John Holman served Wycliffe for seven years and their departure was deeply felt by both choir and congregation. Both have actively pursued professional careers and we saw Shannon earn increasing roles in opera companies throughout the nation. This past May she received an impressive summer appointment with the San Francisco Opera and in the fall began a prestigious two-year appointment as Young Artist with the Pittsburgh Opera. In the fall, John left the area to join her there. Their voices, as well as their devotion to the music program and to the church, have been greatly missed. In addition, Jill Caynor who so successfully developed our wonderful “Music-Makers” program for the children left to do similar work at Kings Grant Presbyterian. Her loving spirit and superb talents with the children were missed.

But we also read in the book of Job that “God is greater than we can understand . . .” and we are witnesses to that scripture. New faces have joined the choir and bells this year, and new children are part of Music-Makers. New professional singers have brought beautiful voices and great devotion to the choir this year. We welcomed Anna Feucht who moved the congregation to tears with her beautiful rendition of “Steal Away,” joined by Larry Clemens on trumpet, as we remembered the 15th anniversary of 9/11. We welcomed Alex Mason who also serves as director of choirs and orchestra at First Colonial High School who occasionally brings along current and former students, and has joined Marla Robinson and her great flute talents with his fine violin skills. We welcomed Tiffany Hanson who, in addition to her beautiful singing, has taken leadership of the “Music-Makers” which is now offered as part of “Kids’ Club” resulting in an increase in number. Her entire family has become active in the church and her husband, Ryan, now shares his percussion skills with our contemporary ensemble, *Another Day Dawning*. And Joseph Bray,

continuing into his third year as tenor section leader, also volunteers his talents with the handbells and just recently began playing keyboard with ADD. (and brought his mother and a friend to choir membership!)

Throughout the time of loss, we have also celebrated, as did the writer of Ecclesiastes who observed “a time to rejoice, a time to gather, a time to dance, a time to heal . . .” The Chancel Choir has provided music leadership in worship on 48 Sundays, including special music Sundays during Lent, Advent, as well as evening services on Maundy Thursday and Christmas Eve. The Wycliffe Ringers have presented music in worship on 11 Sundays in 2016 and joined with the children of the church in a special music Sunday in late December as the children presented a costumed drama of the Christmas story. *Another Day Dawning* has presented music in worship on 22 Sundays.

We continue to broaden our ways of worship which this year included a *Service of Christian Prayer using the music of Taizé*. The meditative, prayer-filled evening service was enhanced by extensive and very beautiful sanctuary decorations including dozens of candles, pine boughs, and driftwood, designed and installed by Bess Mann. In addition, Pentecost was celebrated with the massive array of doves suspended from the ceiling of the sanctuary, as well as banners and flags around the sanctuary installed by Thad Brake. Another first for the year was our December “Nativity Set Museum” which featured congregation members’ nativity sets so beautifully arranged and displayed in the fellowship hall by Bess Mann, Josie Collier, and Francie Brake. A special invitation to the community resulted in a wonderful crowd of members, friends, and neighbors to enjoy a fabulous Christmas concert presented by the U.S. Army Training and Doctrine Command Band from Fort Eustis in December, followed by a lovely reception hosted by the Fellowship team.

One of our new areas of ministry in the Worship Arts is that of Scripture Reader. Worship is our ‘group conversation’ with God. God’s voice comes to us during that time through the sermon, through congregational hymns and responses, through prepared music, through drama, through art, and as scripture passages are read aloud. Members of the congregation who read aloud hold a position known as “Office of the Believer” and this group has grown to include Jackie Alcorn, Beverly Parker, Rose Hackney, Donice Schumm, Ashley Garneau, Daniel Drehoff, Sam Grady, Jens Islev-Peterson, Jim Haynie, and Bob Prestridge. We thank them for their preparation and their service.

In the New Testament’s Transfiguration story, which we will read in a few weeks in Sunday’s worship, as Jesus is transfigured in blinding light standing with Moses and Elijah, his disciples are given the privilege of a ‘glimpse of glory’ so great that they never want to leave the place. Each week, as Wycliffe’s musicians and worship leaders plan and prepare for worship, then participate together with the congregation as the Body of Christ, our prayer is that together we, too, may catch a ‘glimpse of glory’ so great that we want to invite everyone we know to THIS place.

Sandi Billy

Session Members & Staff - Names/Committees for 2017

NAME/ADDRESS of Elder	CLASS	E-mail	Phone number	Committee
Rene Hudgins 1709 N. River Rd. VA Beach, Va 23454	2017	rthrb2@verizon.net	757-481-9606 757-377-2093 (cell)	Christian Education
Cathy Rotch 505 Cold Spring Rd. VA Beach, VA 23454	2017	mizcathy137@gmail.com	757-321-1809 757-288-3893 (cell)	Facilities
Jim Haynie 1273 Mossy Oaks Ct. VA Beach, VA 23454	2017	jhaynie32@gmail.com	757-481-7299 757-286-2047 (cell)	AS & F
Bev Parker 2352 N. Wolfsnare Dr. VA Beach, VA 23454	2017	beverly.parker@cox.net	757-481-0555 757-831-2698 (cell)	Member Care
Mark Via 1808 S. Woodhouse Rd. VA Beach, VA 23454	2017	markvia57@gmail.com	757-705-2792 (cell)	Worship
Gail Schwartzer 1808 Timberwood Lane VA Beach, VA 23454	2017	schwartzers@cox.net	757-481-1149 757- 404-6669 (cell)	Clerk
Francie Brake 928 Old Cutler Rd. VA Beach, Va 23454	2018	brake84@cox.net	757-481-4528 757-647-3358 (cell)	Fellowship
Jackie Alcorn 1348 Penguin Circle VA Beach, VA 23451	2018	jackieealcorn@gmail.com	757-428-4131 757-618-3321 (cell)	Christian Ser. & Mission
Robert Prestridge 2140 Vista Circle #401 VA Beach, VA 23451	2018	rpridge1@cox.net	757-363-2661 757-335-2661 (cell)	Planning & Review
David Gangwer 2305 Souverain Lane VA Beach, VA 23454	2018	davidgangwer@cox.net	757-412-0222	Fellowship
Josie Collier 2306 Bayberry St. VA Beach, VA 23451	2018	josiecollier@verizon.net	757-285-0451 (cell)	Worship
Garland Miles 2221 Admiral Circle VA Beach, VA 23451	2018	gfm2@cox.net	757-650-3006 (cell)	Facilities
Robin La Vigne 921 Gen. Beauregard Dr. VA Beach, VA 23454	2019	rjlavigne76@gmail.com	757-481-6286 757-589-4016 (cell)	Outreach
Carolyn Lindsey 845 First Colonial Rd. #324 VA Beach, VA 23451	2019	cnl.jcl54@gmail.com	757-963-0032 (804)347-7994	Outreach

NAME/ADDRESS of Elder	CLASS	E-mail	Phone number	Committee
Darrell Kennedy 2406 Starfish Road VA Beach, VA 23451	2019	jdkennedy58@gmail.com	757-217-2381	Member Care
Lee Uittenbogaard 433 W. Farmington Rd. VA Beach, VA	2019	annabelle44@cox.net	757-227-5001	Christian Education
Chuck Steenburgh 909 Marshall Cir. VA Beach, VA 23454	2019	sailracer@verizon.net	757-481-5741 757-681-8025 ©	Christian Ser. &Mission
Lisa Sowell 2341 Hood Drive VA Beach, VA 23454	2019	gasart8@verizon.net	757-412-2063	AS & F
Name of Officers	E-mail	Phone Number	Position	
Vickie Burden 2437 Haversham Close VA Beach, VA 23454	vburden1@cox.net	757-481-9249	Treasurer	
Jim Haynie 1273 Mossy Oaks Ct., VA Beach, VA 23454	jhaynie32@gmail.net	757-481-7299	Financial Secretary	
Name of Church Staff	E-mail	Phone Number	Position	
Garrett B. Bugg 449 West Plantation VA Beach, VA 23454	pastorbugg@wycliffepresbyterian.org	757-496-2620 609-240-2204 (cell)	Pastor & Session Moderator	
Mary Lou Crifasi 1817 Calash Way VA Beach, VA 23454	office@wycliffepresbyterian.org	757-496-2620	Office Administrator	
Sandi Billy 1044 Yardley Landing VA Beach, VA 23454	sbilly@vwc.edu	757-455-3376	Music Director Choir Director Organist	
Jim Basnight 1336 Laurelfeld Ct. VA Beach, VA 23454	baroness4@verizon.net	757-481-2251	Grounds Maintenance	
Name of Trustee	E-mail	Phone Number	Position	
David Carney 1796 Greensward Quay VA Beach, 23454	carneypl@verizon.com	757-496-8648	Trustee	
James Haynie 1273 Mossy Oaks Ct., VA Beach, VA 23454	jhaynie32@gmail.net	757-481-7299	Trustee	

Wycliffe's Committees - 2016 Reports

The following committees are responsible for Wycliffe's various ministries. Active elders chair the committees. Their reports follow.

Members of the congregation voluntarily serve on respective committees according to their interests, talents and schedules. Do contact one of the 2017 committee co-chairs listed on page 14 & 15 if you would like to serve on their committee this year and your schedule permits. The names on the following reports co-chaired committees in 2016. Check out “*Who You Gonna Call?*” for contact individuals & activities in 2017.

You, the congregation, are integral in Wycliffe's ministry. Thanks to all who presently serve, have served in the past and thanks to all who decide to share their gifts and talents in the future!

Gail C. Schwartz
Clerk of Session

1. Administration, Stewardship and Finance (2016 chairs - Jim Haynie & Jodi Rossman)

The Finance committee develops an annual budget for adoption by the session; plans the annual Stewardship campaign; oversees the church treasurer in his/her work; is responsible for collecting, counting, and depositing weekly offerings. It is also responsible for ensuring an annual financial audit and maintains and periodically reviews all legal documents of the church.

Administration, Stewardship & Finance - Year Report 2016

The Administrative, Stewardship and Finance (A, S & F) committee planned the annual Stewardship campaign and developed an annual budget for adoption by the session based on Committee Inputs and Member and Regular Attendee Pledges for each upcoming year. A, S & F also oversees the church treasurer in his/her work, and is responsible for collecting, counting, and depositing weekly offerings. A, S & F is also responsible for ensuring an annual financial review is conducted and maintains and periodically reviews all legal documents of the church.

Jodi Rossman & Jim Haynie

For 2017 Approved Budget -- See pages 30 - 34.

2. Christian Education (2016 Co-chairs - Rene Hudgins & Chad Gangwer) - *This committee is responsible for all aspects of the church's educational program -- weekly and annually. It endeavors to shelter, nurture and promote the spiritual fellowship and education of all Wycliffe's congregation -- young and old. They have the authority & responsibility to select curriculum, recruit teachers and plan, coordinate and administer educational events in conjunction with the Church calendar. The committee may also recommend other educational classes and/or events through the year.*

Christian Education Report 2016

- **First Communion Class** met on Saturdays in March and April. Five students received First communion-Megan Uittenbogaard, Madi Johnson, Bradi Johnson, Rex Lemmon, and Aubrey Moore.
- **Confirmation** students studied for two years and were confirmed in May. The confirmands were Zach Scheuer, Jens Islev-Petersen, and River Robins.
- **Sunday School** programs are available for children PreK-adults.
- **New Sunday School curriculum** for elementary age is implemented for September –June. The classes will be utilizing the Whirl classroom curriculum. This curriculum uses colorful children's Bibles. This curriculum is a two year program. Elementary student attendance has increased from 10-20+ students.
- **New Adult Classes** have been introduced including New Members class, Lenten study, *Prayer of Jabez*, *Jesus Through Middle Eastern Eyes*, Acts of the Apostles, and an Advent Study. This group is led by Bob Prestridge. The Kitchen Forum class also has met weekly. They have studied Parables and Prophecies of Old Testament/Relating to New Testament. This class is led by Rev. Bill Austin. The classes combined for Lenten and Advent studies.
- **High Schoolers** have met for Sunday School on the first and third Sundays. They are currently studying ways to live their faith and preparing for Youth Sunday.
- **Middle and High schoolers** also meet second and fourth Sundays at 5pm for Youth Group. The youth group is growing from 4 students to 10. We have had 12+ teens on various outings. Rene Hudgins and Lisa Scheuer work with the middle schoolers. Garrett and Ali Bugg work with the high schoolers.
- **Vacation Bible School** was held evenings July 24-27. This year's theme was Surf Shack. We met Monday-Thursday nights. This time frame suited both the teachers and students. Students ate dinner together before Surf Shack themed activities. Attendance this year was 20 students.
- **Confirmation class continues** in September for all 6-8 grade students. The class is using Augsburg Fortress Here We Stand curriculum. The class meets first and third Sundays each month. Three students were confirmed in May- Jens Islev-Petersen, Zach Scheuer, and River Robins.
- **Kid's Club** has returned this Fall. We met for six weeks-Oct. 5- Nov.16. We met 5:30-7 each week, starting with dinner. We adapted the Starquest curriculum and had a weekly skit, movement, arts/crafts, and science fun. Kid's Club will meet again in the winter Jan.11-Feb.11.
- **Music Makers** continued in the spring with Jill Caynor. Tiffany Hanson began working with our children Fall 2016. She met with students before Kid's Club each Wednesday. In January, Ms. Tiffany will be a part of Kid's Club. She will meet with students 6:30-7. This way more students can participate.

Rene Hudgins & Chad Gangwer

3. Christian Service and Mission (Co-chairs for 2016 - David Gangwer & Donice Schumm) -

Provides opportunities for the congregation to engage in Christian service in the local community, especially focusing on & coordinating with local agencies.

Christian Service & Mission Report - 2016

We believe that the Christian life is a call to service. We stress Christ's call to serve our neighbors, especially the "least of the brethren", applies to every Christian. We believe that as a congregation we need to direct our time, talent, and financial gifts to projects and programs aimed at helping others. Our committee provides opportunities for the congregation to engage in such Christian service.

Primary Concentration: Homeless and extremely needy Virginia Beach School children and Homeless indigent adults

- **February- Winter Homeless Shelter:** Working with the VOA, We sheltered and fed Homeless adults for a week. We provided 21 meals with approximately 70 people per meal. This mission involved over 140 Wycliffe members giving of their time, talent and means. **(Total assisted: 80 homeless men and women)**
- **April and October: Red Cross Blood Drives** Two blood drives were sponsored & held in the Wycliffe Fellowship Hall. In April, 33 Pints were donated and in October, 23 pints were donated. Each pint assists 3 people. **(Total Assisted:168)**
- **April, July and Sept: PiN (People in Need, Ministry).** We supported the Ministry by purchasing and preparing a meal at the Wycliffe Kitchen and delivering it to the ministry location, serving approximately 70 Homeless people at both the April and Sept meals. Additionally we prepared in July, a breakfast at the PiN ministry, for approximately 80 Homeless people. We also collect gently used clothing for them. Twenty-eight volunteers helped with the meals and another 14 donated homemade baked goods). **(Total assisted: 220)**
- **April, May, June: Beach Bag Project.** This program provides food that will fit discreetly into a school Childs backpack. These needy and homeless children may not eat over the weekend unless this food is provided. We provided "bags" for 20 Virginia Beach High School Children, 6 meals each weekend, for 13 weeks. (Our local BB&T Bank helped by providing a large donation of food). **(Total assisted: 260).**
- **June /July: VB Fest** This City program shelters homeless families throughout the summer on an emergency basis. We are unable to shelter "families" at Wycliffe so funds were provided (\$235.00) to the VB Christian Church, to help with their weekly food needs. We also provided a cooked meal (\$65) to the Holy Apostles Church, who hosted. This meal was cooked, delivered and served by 15 members of Wycliffe. **(Total assisted: 10)**

- **June, to Aug: College Bound Foster Child** We investigate through the Social Services to find a college bound foster care child, who has aged out of the “System”. Once a child is identified and accepted into a college, we assist with setting up their Dorm Room. This year we sponsored Aprille Hipe’s first year at TCC with a new laptop computer and printer and received 42 other gifts (value \$1165.00) to set up her apartment, she also received a full year HRT365 transportation pass, as well as gift cards to Barnes & Noble, Target, and a Visa Gift Card (\$295). **(Total assisted: 1)**
- **July/ Aug: Apple Tree** We fulfilled 395 assorted school supplies for homeless school children **(Total Assisted: 30)**
- **Nov/ Dec: Thanksgiving and Christmas food Baskets:** We collected 30 Holiday dinner food baskets (15 for each Holiday) for Virginia Beach Homeless or needy children and their families. Our corporate neighbor, “Mythics” provided 10 of the dinners. In addition a \$25.00 food gift card (\$750 total value) was given to each family to help provide fresh produce, meat, milk, etc. **(Total assisted: 150)**
- **Nov/Dec: Supplemental food Bags:** During the “Christmas School Break” period, the homeless or indigent children have no means of food. We provided enough food to cover 3 meals a day including milk and healthy snacks, for a 10 day period, a total of 42 Supplemental bags were collected. **(Total assisted: 168, “avg. 4 in family”)**
- **Nov/Dec: Children’s Angel Tree and PACE Elderly Gifts:** Being identified to us by a VB Holiday Social Worker, Wycliffe fulfilled 35 “Wish List” gifts for homeless school children. In addition, four, \$25.00 Target Gift Cards (\$100.00) were provided that will be combined with other cards to assist children who “come into crisis” after the wish list has been distributed. The PACE indigent elderly were given 10 shirts and additional sweatshirt jackets that were donated by Rev. Austin and YMCA group. **(Total Assisted: 59)**
- **Dec: Samaritan House Christmas Party** was hosted at Wycliffe that included a full sit down dinner for 15 adults and 27 kids. Activities included Santa, Christmas video, face painting, cookie decoration, “Gift Shop” (for children to get their parents a gift, teen crafts and the mothers make a Christmas door wreath. Homemade quilts and scarves were given to each mother. In addition, throughout the year we help with food, clothing, linens, and funds (\$500). **(Total Assisted: 42)**
- **Food Closet:** is maintained during the months that school is in session. The School Social Workers collect the food (\$1200) for their families on an as-needed basis. In addition \$20 Food Gift Cards are available for their use (\$755). The food and funds are donated by our congregation. **(Total Assisted: 44 adults & 29 kids)**
- **Meals on Wheels:** Food is delivered three days a month to shut-in’s. **(Total Assisted: Approx 360)**

- **St. Columba Homeless Shelter in Norfolk:** 150 sandwiches are made by the Fellowship committee monthly and delivered to them. We also gave \$500.00 in funds as well as detergent, paper bags and clothing. **(Total Assisted: 1800 plus)**
- **Crisis Housing Assistance:** Provided funds (\$4000.00 budgeted) through-out the year to assist families with past due rent and/or utility bills, with average payment of \$98 towards amt. owed of \$285. Turned down 8 requests of over \$1500 towards a need of over \$5000. Utilizing the “Charity Tracker” program. **(Total Assisted: 160, “AVG 4 in family”).**

Other on- going missions

- **Food Bank:** Provided \$500 in funds
- **Cub and Boy Scouts #493:** Sponsor and provide a weekly meeting space in our Fellowship Hall. This year we gave \$300 to the Cub Scouts and another \$350 to the Boy Scouts so that those who could not afford to go to camp could do so.
- **Infant Stimulation Program:** A very important city sponsored program for developmentally delayed infants has its home at Wycliffe’s A-Frame.
- **VETS House:** Collect paper goods, detergent and clothing for male and female Vets. Provided furniture, household items, etc. to set-up new female Vets house.
- **Special Offerings Collection:** One Great Hour of Sharing -\$1862, Pentecost- \$2112, Peace Keeping-\$1302, Joy Fund-\$1742.
- **Seamen’s House:** Provide magazines, clothing, hotel toiletries and handmade knitted caps, and then deliver to them.
- **St. Jude’s Ranches for Children:** We collect and send used greeting cards, Campbell’s labels and *Box Tops for Education* to assist with their fund raiser.
- **Wycliffe Youth:** Provide Funds for group mission trips and retreats.
- **Lady Shriners:** Collect used aluminum can tabs for the Lady Shriners’, who sell them to support Shriners’ Hospitals in Philadelphia and Greenville, SC
- **PEVA Congo Mission:** Collected stamps to assist with this mission funding. (Discontinued)

Donice Schumm

4. Facilities (2016 Co-chairs - Cathy Rotch & Garland Miles) *The Facilities committee is responsible for all aspects of the maintenance and upkeep of the church's property and grounds. It schedules in coordination with the session occasional work days; it oversees anyone who is hired or contracted to carry out maintenance, upkeep, or repairs; and is responsible for ensuring that property and liability insurance coverage is maintained and reviewed annually in coordination with AS & F committee.*

Facilities Report – 2016

Projects – New and Annual

- Formation of the Columbarium Committee to explore developing an onsite facility, a place that is celebratory and self-funding. (See *Columbarium Committee Report p. 29.*)
- Coordinated creation of a *Memory Garden* at the new front entrance to the church to honor loved ones of donors. A contractor installed plants and a bench.
- Initiated - *Adopt a Spot: 15 Minute Mission*. Members and friends chose property/landscape to improve individually, as a group or family. Before and after pictures taken and shared in the Wycliffe E-News.
- Cut cedar logs into lumber and constructed a beautiful cross for use every Easter with guidance & help from two talented members.
- Improved *Jeri's Garden* beside the Red House with family and church members to weed, clean the bench and add some plantings. This is another quiet area for meditation and prayer.
- Conducted 4 church workdays in 2016 – utilized the services of 70 + people (church members, friends, military volunteers and outside groups) to clean and repair both outside and inside of the main church building, the Red House, and the surrounding property;

Policy, Contracts & Research

- Researched converting oil to gas in the Red House. Change too expensive at this time.
- Completed updating the *Facilities Use Agreement* -- an application for all outside events using Wycliffe. It is available on the church website and through the church administrator.
- Contracted a new security company who replaced faulty motion sensors and educated Facilities on use. Security cameras for the Red House generously donated and installed by a church member.
- Contracted a new cleaning company. Operations begin in January 2017.
- Policy – only hires contractors who are licensed and insured.
- Negotiating with the city to reduce our water bill in 2017, since it doubled in 2016.
- Negotiating extensive, convoluted and very time consuming discussions with McKenzie, MSA and the city concerning responsibility for water supply pipe under Great Neck Road, sewer cleanout location and water meter installation. Wycliffe has already paid for the meter and McKenzie's subcontractor has admitted to a committee co-chair that they are responsible, so all of these matters should be completed at no cost to the church.
- Great Neck Lake Association meets at the church and has educated the Facilities committee on the life and conditions of our pond. Facilities improved shoreline access and view, with trash removal, shrub reduction and tree removal.

- Provided The Red House for use by The Art Therapy Program, Young Life, a tutor, 12 step programs, Girl Scouts and conferences/retreats by various organizations.

General Maintenance

- Repaired new and old leaks in the roof and restored power outages from Hurricane Matthew (October 16)
- Installed Programmable thermostats in Red House.
- Professionally pruned and removed trees too tall for maintenance and/or threatening building structures.
- Planted 6 non-shedding Leland Cypress trees in front of the wall to the left of the new church entrance to camouflage the utility meter and the wall. ***Facilities Committee is seeking donations for 6 more for left-side of the stained glass window.***
- Repaired a clogged sewer pipe in the woman's bathroom.
- Coordinates opening Wycliffe 12 months of the year on Sunday mornings and will train additional open and closers in 2017.
- Cleaned and replaced one of 5 air conditioning units in the Red House.
- Replaced Lazarus, the old Ford tractor with a Kubota Z725- 60. Cut mowing time in half.
- Stripped and waxed floors in main building. (will be done annually in February).
- Replaced a broken urinal and toilet in the men's room.
- Replaced a water heater in the Sacristy.
- Rekeyed locks so one key opens all of the entrances and classrooms in the main building.
- Sidewalk from north to south property edge was professionally trimmed and edged.
- Installed brighter exterior Led security lights were to the red house, social hall and Ed wing and entrance ways.
- Two brick splash blocks and drainage ways were added to north side of new addition. Drainage pipes were added to two others.
- Temporarily repaired several down spouts and roof membranes until the roof is replaced.
- Repaired Red House furnace due to flooding by Hurricane Matthew. Extended power outage cut electricity to the sump pump.
- Electric sockets repaired in Ed wing and Fellowship Hall.
- Many ceiling tiles replaced due to water stains.
- December 17: 6 church volunteers literally raked, bagged and removed tons of leaves from the circle, flower gardens, lawn, parking lots and around the red church house.
- Relocated a sconce light in the Sanctuary to fill in the void created by the left window removal.
- Installed fire extinguishers, mail boxes, key boxes and hung a cross in the new administration hallway.
- Relocated four white boards and display boards at request.
- Assembled various pieces for the Ed wing and administration area.

- Repaired/replaced Door locks/handles in the social hall and south entrance.
- Installed new locks in red church house and adjusted doors to open better.
- Installed a new air conditioner in the Red House's old office and repaired the large air conditioner in the Wyle Room.
- New electrical sockets installed in the kitchen and old office in the red house to accommodate the new tenants.
- Hired contractor to repair the steeple's lightning rod cable that was 90% severed.
- Relocated water drain from ice maker.
- Hung two new flat TV screens on Sunday school walls.
- Hung and tightened folding doors to sacristy.
- Patched the parking lot and re-stripped the parking spaces.

With hard work by members, outside organizations and assistance of professionals, seeing the beauty of our church & grounds is a welcoming sight.

Cathy Rotch & Garland Miles

5. Fellowship (Co-Chairs for 2016 - Francie Brake & Jean Prather)- *The Fellowship Committee provides regular Fellowship dinners / luncheons; provides refreshments for after worship fellowship time; ice cream socials; pot luck meals, and receptions and oversees & coordinates receptions for weddings & funerals, and/ or other special church social events. Fellowship also provides 160 sandwiches monthly to St. Columba. Fellowship offers opportunities for church members to connect with each other via various events.*

Fellowship Annual Report for 2016

- **Feb. 3rd & 9th** – Provided meals for 2 homeless shelter dinners
- **March 12 & Oct. 22nd** – Provided lunch for 2 workdays
- **April 17th**- Set-up and coordinated a potluck luncheon
- **Sept. 11th** - Set-up and provided lunch for Rally Sunday
- **Oct. 8th** - Set-up and provided a BBQ for 1 Saturday luncheon
- **Jan. 24th, Mar. 20th, May 22nd, June 12th, Aug. 21st and Nov. 13th** – Set-up and provided meals for 6 luncheons following worship
- **Apr. 30, May 5th, May 9th, Aug. 6th and Oct. 16th** – Coordinated and provided 5 funeral receptions
- **January – December** – Purchased supplies and prepared 160 sandwiches every month for St. Columba Homeless Shelter for a total of 1920 sandwiches!
- **Jan – June & Sept. – December** – Coordinated 9 Ladies Night Out Functions.

Francie Brake & Jean Prather

6. ***Member Care (Co-chairs for 2016 - Beverly Parker & Jackie Alcorn)*** - *Member Care committee is responsible for ensuring that attention is given to church members with special needs, such as illness or bereavement. This includes cards, visitation, and meals. The committee also organizes flower delivery of Sunday altar flowers to these members. Member Care maintains records of weekly attendance and sends notes to members who have been missed. The committee provides a welcome to new church members and maintains contact with college students. Member Care committee collaborates with its subcommittee TLC to enhance care and lay visitation to shut-ins.*

Member Care Annual Report – 2016

- **New Members** - In 2016 Member Care committee took an active role in receiving new members into the church. Pastor Bugg offered a “Pastor Class” which was held twice during the year in order to meet with prospective members. As these new members joined the church, they received name tags, had their photos taken and displayed on the Member Care bulletin board, and were welcomed with a cake in their honor. The women were presented with boutonnieres to wear to church. Name tags for the entire congregation were maintained by Member Care.
- **Attendance Records** – Each week attendance records were compiled from the names signed into the “Friendship” pads in the pews during worship. Notes were sent to those who missed 6 Sundays.
- **Altar Flowers** – Throughout the year Member Care committee members delivered Sunday altar flowers to comfort church members in the hospital, recuperating at home, or on the prayer list.
- **Prayer List** – Each week an updated Prayer List was emailed to the Session and all church members who wished to receive it.
- **“Wycliffe Cookers”** – A team of 16 volunteers participated in preparing and delivering meals to church members following hospitalization or a death in the family, or those needing assistance.
- **Campus Ministry** – To maintain contact with our college students, cards were sent twice during the year with a gift card enclosed.
- **TLC (Tender Loving Care) Committee**, chaired by Nelda Fink, sent out numerous cards to church members’ homes and Long-term Care facilities. Special “treat baskets” were also prepared several times during the year and delivered to these members. In addition visits were made to Wycliffe members residing in Long-term care.

Jackie Alcorn & Beverly Parker

7. Outreach - (Co-Chairs for 2016 - Ruth Hogan & Mark Via) *Outreach Mission serves as a liaison between Wycliffe and the community. We ensure that events are publicized adequately and that we maintain a physical and digital presence in the community.*

Outreach Report - 2016

- Transitioned marquee sign on North Great Neck to a new contributor. The sign was thoroughly cleaned prior to transition. The marquee is used to market Wycliffe events but also for quick, inspirational sayings.
- The sale of bumper stickers and polo shirts slowed to a crawl in 2016.
- Outreach designs, makes, and distributes bags to new church visitors. These bags include candies, an annually updated committee involvement tri-fold, a fridge magnet of the sanctuary's stained glass window, and a tri-fold created by Christian Education showing opportunities within the education wing.
- Outreach in 2016 chose to step away from the mission side of the committee and distributed missions related funds to both Christian Education and Christian Service & Missions.
- The website is routinely updated to list sermon recordings, bulletins, inserts, events using Google Calendar, and committee updates.
- The church's Facebook page is routinely updated to advertise our church events.

Our goal over the coming years is to continue to maintain a strong physical presence through various public relation methods but to also pursue a greater digital presence. We feel strongly that our website and Facebook page are important tools in continuing our growth as a church.

Ruth Hogan & Mark Via

8. *Worship (Co-chairs for 2016- Bess Mann & Josie Collier)* *The Worship Committee oversees the congregation's worship life. It is responsible for all worship services, including special features of worship services, flower coordination, the preparation of elements and serving the sacrament of communion, assignment of Elders to serve Communion, secures and trains ushers for church services, supports the pastor and music director in implementing the music program, and creates an atmosphere conducive to worship.*

Worship Report - 2016

The Worship team at Wycliffe Presbyterian considers each Sunday's worship service to be a special one. It is the one hour in the week that gives meaning to the rest. The Sacrament of Communion is celebrated on the first Sunday of each month in addition to Maundy Thursday, Easter, Christ the King Sunday and Christmas Eve.

Special Worship Events: 2016

- February 24 - Ash Wednesday
- March 20 - Palm Sunday
- March 24 - Maundy Thursday
- March 27 - Easter Sunday
- May 15 - Pentecost
- September 11 - Rally Day
- October 2 - World Communion Day
- October 2 - Blessing of the Animals
- November 20 - Christ the King Sunday
- December 3 - Hanging of the Greens
- December 11 - Special Worship through music
- December 11 - TRADOC concert
- December 24 - Special Christmas eve service with communion
- December 25 - Christmas service

If you are interested in working on the Worship Committee this year, please contact Josie Collier at 481-3869. We especially need extra help during Easter and Christmas.

Bess Mann & Josie Collier

9. Personnel, Planning & Review Committee - (Chair for 2016 – Bob Prestridge) *The Planning and Review Committee was reactivated in 2014 with the task of developing Core Values, a clear Congregational Identity, a Ten Year Strategic Plan based on that identity and also conducting ongoing reviews of current Wycliffe Presbyterian Church programs/procedures. The 2016 P & R Committee: Pastor Bugg, Bob Prestridge, Jim Haynie, Gail Schwartzer, Jean Prather;; Pat Carney*

A. Planning & Review – 2016 Report

The vision and goals of a church congregation continually grow and change. The Planning and Review Committee was re-activated in 2014 as an evaluation and accountability tool for the vision and mission of these goals here at Wycliffe. In July 2016 as part of a revision to the Manual of Operations for our session, the Personnel Committee was combined with the Planning and Review Committee to form the Personnel, Planning and Review Committee.

Building on the **Core Values** adopted in 2014 and the **Bedrock Beliefs** established at the 2015 session retreat, the session approved in August the Vision and Mission Statements shown below:



Wycliffe
Presbyterian Church

We are God's people

called to fulfill our mission to:

- † Promote and extend the unity we experience through Christ to all.
- † Provide worship to praise God and nurture souls.
- † Develop our faith to help us understand scripture and life.
- † Engage our larger community through ministries to the weak, the poor and the marginalized.
- † Be good stewards of God's creation.

In order to achieve our vision of living and sharing the good news of Jesus Christ.

Using the above vision statement and supporting mission statements, the session, at our 2016 retreat, established the “Top 3 Session Goals for 2017”. They are:

- 1) Grow the congregation
- 2) Expand congregational involvement
- 3) Educate the congregation on church operations at Wycliffe

- B. **Personnel (2016 Chair is Jean Prather)** - *Formed in April 1988 by the session, it evaluates paid personnel; handles discipline and grievance procedures; reviews compensation and benefits . It also makes recommendations to session for action when it deems it is required.*

Personnel Committee – 2016 Report

2016 the Personnel Committee merged with the Planning and Review Committee. The Personnel Committee evaluated paid employees for 2016 and reported results to session for review and action.

Jean Prather

- 10. Nominating Committee - (Co-chairs for 2016 - Jodi Rossman & Gail Schwartz)** *Formed annually to recommend a slate of nominees to the congregation for consideration and vote as one class of elders rotates off the session each year.*

Report on the Nominating Committee 2016

The 2016 Nominating Committee was comprised of one person from each Session Committee, three members at large and two Ruling Elders. This year's members were: Pat Carney, Ali Bugg, Carol Marinak, Betty Douglas, Steve Hackney, David Gangwer, Ruth Hogan, Bill Wahab, Marsha Miles, Nancy Dabney, Pastor Bugg ex-officio. Jodi Rossman was chair and Gail Schwartz was co-chair.

The slate they nominated for a 3 year term were *Lisa Sowell, Chuck Steenburgh, Lee Uittenbogaard, Darrell Kennedy, Carolyn Lindsey and Robin LaVigne.*

The slate was elected by acclamation at a Congregational Meeting on September 25, 2016.

*Jodi Rossman
Gail Schwartz*

11. Columbarium Committee - Facilities – (Cathy Rotch & Garland Miles co-chairs) Formed 8/2016 to explore options/possibilities of a Columbarium wall at Wycliffe. . Note: A Columbarium is a free-stand structure constructed of numerous niches designed to hold urns containing cremated remains

Columbarium Committee Report – 2016

August 24, 2016 the Session formed the Columbarium Research Committee to explore creating a Columbarium @ Wycliffe Presbyterian. The purpose of this committee was to explore a site, seek information from design firms, and determine cost to Wycliffe and interested individuals. Co-chaired by Cathy Rotch & Garland Miles, the committee has 7 members, and met 4 times September & October. To date the committee has:

- Distributed a written survey during church service to obtain the congregations thoughts/feelings. The results compiled indicated a majority of members favored having a Columbarium but many questions needed to be resolved.
- Were tasked with visiting local church columbaria, taking pictures, finding out how each was designed, and how the columbarium fit in with the church campus.
- Met with and reviewed presentations by 3 Columbaria design firms. While each had several features that would be appealing, no decisions were made in 2016.

Cathy Roth & Garland Miles

Wycliffe Presbyterian Church - Finalized 2017 Budget

Wycliffe Presbyterian Church Budget			
Acct No.	Account Title	2016 Approved Budget	2017 Session Approved Budget
Anticipated Income			
3010	Operating Fund Pledges	\$302,742	\$301,850
3020	From Non-Pledge's	\$4,456	\$8,000
3030	Cash Offering	\$4,180	\$5,000
3035	Memorial Gifts	\$0	\$0
3045	Offering Envelopes	\$52	\$50
	Total Offering	\$311,430	\$314,900
Other Income			
3110	Interest-Checking	\$24	\$50
3120	Investment Income-Operating	\$50	\$2,500
3150	Use of Church	\$4,020	\$6,000
3160	Anticipated Surplus	\$0	\$0
	Total Other Income	\$4,094	\$8,550
	Total Income	\$315,524	323,450
Expenses			
Admin, Stewardship & Finance			
5205	Supplies - Church	\$1,300	\$1,750
5207	Stewardship Materials, Pledge Cards, Pledge Envelopes	\$250	\$275
5208	Stewardship Lunch	\$350	\$350
5210	Copier Expense	\$6,000	\$6,000
5220	Staff Travel	\$100	\$100
5230	Postage and Meter Rent	\$1,800	\$1,800
5235	Insurance: Worker's Comp, Liability, Church Package: \$11,354	\$11,401	\$10,500
5240	Office Equipment/Computer/Data Base	\$1,800	\$2,000
5249	Miscellaneous A & F Expense	\$400	\$400
5242	Administrator Training	\$200	\$200
5250	Compensation Expenses	\$900	\$0
	Total A, S & F	\$24,501	\$23,375

Acct No.	Account Title	2016 Approved Budget	2017 Session Approved Budget
Christian Education			
5550	Youth Program	\$900	\$800
5555	Mission Project / Trip	\$1,000	\$358
5560	Camp scholarship / Youth Retreat	\$75	\$75
5565	Vacation Bible School (VBS)	\$800	\$700
5570	Curriculum Materials	\$900	\$900
5571	Kids Club	\$100	\$400
5580	Other CE Supplies & Expenses	\$425	\$325
	Total Christian Education	\$4,200	\$3,558
Christian Service & Mission (CS&M)			
Validated Missions (Contributions made to PEVA)			
4010	Unified Mission Giving	\$7,000	\$7,000
4035	St. Columbia Ecumenical	\$500	\$0
4085	Foodbank of SE VA	\$500	\$0
	Total Validated Missions	\$8,000	\$7,000
Local Missions			
4114	PiN	\$300	\$0
4116	Beach Bag	\$200	\$0
4145	Boy Scout Camp (Scholarship)	\$350	\$500
4155	Samaritan House	\$1,500	\$1,500
4163	Local Mission Outreach	\$4,000	\$4,000
4165	Va Beach Shelter Program	\$750	\$925
4175	Food Closet	\$225	\$200
4166	Homeless Families (VBFEST)	\$300	\$0
	Total Local Missions	\$7,625	\$7,125
	Total CS&M	\$15,625	\$14,125

Acct No.	Account Title	2016 Approved Budget	2017 Session Approved Budget
Facilities			
5615	Yard Maintenance / Non Payroll	\$3,000	\$4,000
5625	Janitorial Service	\$11,000	\$12,000
5631	Electricity	\$12,000	\$13,500
5632	Telephone / Internet	\$6,000	\$6,000
5633	Fuel Oil	\$2,500	\$3,000
5634	Trash Removal	\$1,400	\$1,500
5635	Water / Sewer	\$4,000	\$4,500
5637	Natural Gas	\$1,150	\$1,200
5639	Other	\$4,500	\$4,500
5640	Bldg Maintenance Repairs	\$8,737	\$12,000
	Total Facilities	\$54,287	\$62,200
Fellowship			
5110	Paper Products	\$600	\$600
5120	Other Supplies	\$600	\$600
5130	Food & Beverage	\$800	\$800
5131	St. Columba Sandwich Making	\$700	\$200
	Total Fellowship	\$2,700	\$2,200
Member Care			
5312	TLC Expense	\$300	\$250
5317	Campus Care	\$200	\$200
5320	Postage	\$100	\$0
5325	Misc. M/C Expenses	\$100	\$200
5324	New Members	\$200	\$250
5326	Shut in Member Care	\$0	\$0
	Total Member Care	\$900	\$900
Outreach & Missions			
4505	Web Site Hosting	\$810	\$810
4515	Missions	\$1,000	\$0
4530	Publicity & Marketing	\$1,110	\$1,110
4549	Other Activities	\$230	\$230
	Total Outreach & Missions	\$3,150	\$2,150
Personnel, Planning & Review			
5350	Officer Training/Session Retreat	\$400	\$150
5370	Nominating Committee search funds	\$0	\$0
5360	Other PP&R Expenses	\$100	\$0
	Total PP&R	\$500	\$150

Acct No.	Account Title	2016 Approved Budget	2017 Session Approved Budget
Worship			
5410	Music Supplies	\$1,250	\$1,250
5411	Paid Performers	\$6,500	\$9,000
5412	Non-Music Supplies	\$4,500	\$2,000
5415	Pulpit Supply / Visiting Ministers	\$1,000	\$1,200
5417	Flowers	\$0	\$0
5430	Maintenance-Organ/Piano	\$1,000	\$1,000
5435	Organist Supply	\$800	\$800
5440	Special Music	\$2,500	\$2,500
5445	Automated Ext Defibrillator (AED)	\$0	\$0
5450	Special Activities	\$400	\$100
	Total Worship	\$17,950	\$17,850
Minister Compensation			
6230	Salary & SS Allowance	\$35,125.00	\$38,157
6234	Social Security Allowance	\$5,498.00	\$5,597
6232	Housing Allowance	\$36,750.00	\$35,000
6235	Pension & Medical (Salary + Housing + SECA = Total Effective Salary (TES). TES X 36.5% = \$24,921	\$26,234.00	\$26,702
6237	Professional Expenses	\$2,700.00	\$2,700
6238	Continuing Education Allowance	\$1,000.00	\$3,000
	Total Minister Compensation	\$107,307.00	\$111,156
Music Department Compensation			
6340	Salary, Instrumentalist - SB	\$20,800	\$20,800
6346	FICA & M/C Tax	\$1,591	\$1,591
6350	Salary, Director of Music - SB	\$20,790	\$20,790
6356	FICA & M/C Tax Dir of Music	\$1,590	\$1,590
	Total Music Department Compensation	\$44,771	\$44,771
Administrative Compensation			
6430	Salary - MLC	\$30,000	\$30,900
6436	FICA & M/C Tax - MLC	\$1,889	\$2,364
	Total Administrative Compensation	\$31,889	\$33,264
Facilities Compensation			
6460	Salary - Yard Maintenance	\$7,200	\$7,200
6468	Salary - Watchman	\$0	\$0
6476	FICA & M/C Tax	\$544	\$544
	Total Facilities Compensation	\$7,744	\$7,744

Totals by Category	2016 Approved Budget	2017 Session Approved Budget
Team Accounts		
Admin, Stewardship & Finance	\$24,501	23,375
Christian Education	\$4,200	\$3,558
Christian Service and Mission	\$15,625	\$14,125
Facilities	\$54,287	\$62,200
Fellowship	\$2,700	\$2,200
Member Care	\$900	\$900
Outreach & Mission	\$3,150	\$2,150
Personnel, Planning & Review	\$500	\$150
Worship	\$17,950	\$17,850
Total Team Account Expenses	\$123,813	\$126,508
Compensation Summary		
Minister Compensation - GB	\$107,307	\$111,156
Music Department Compensation - SB	\$44,771	\$44,771
Administrative Compensation - MLC	\$31,889	\$33,264
Facilities Compensation - JB	\$7,744	\$7,751
Total Compensation	\$191,711	\$196,942
Total Expenses (Compensation and Teams Expense)	\$315,524	\$323,450
Total Income	\$315,524	\$323,450
Total Income - Total Expenses = Balanced Budget	\$0	\$0

Who You Gonna Call?

Pastor	Rev. Garrett Bugg	757-496-2620
Office Manager	Mary Lou Crifasi	757-496-2620
Clerk of Session	Gail Schwartz	757-496-2620 ; 757-404-6669

Worship Ministries

<i>Worship Committee</i>	Josie Collier/Mark Via	757-285-0451;707-2792
Lectors	Sandi Billy	757-496-1697
Music	Sandi Billy	757-496-1697
Ushers/Greeters	Jim Basnight	757-481-2251

Education Ministries

<i>Christian Education Committee</i>	Rene Hudgins/Lee Uittenbogaard	757-377-2093;227-5001
Adult Sunday School Class	Bob Prestridge	757-335-2661;
Children's Sunday School	Rene H./Lee U.	757-377-2093; 227-5001
Christian Ed. Committee	Rene H./Lee U.	757-377-2093; 227-5001
Coffee & Conversation	Cindy Hogan	757-496-8318
Kitchen Forum	Gail Schwartz	757-481-1149 or 757-404-6669
Vacation Bible School	Rene H./Lee U.	757-377-2093; 227-5001
Youth Group	Rene H./Lee U.	757-377-2093; 227-5001

Care & Service Ministries

<i>Fellowship Committee</i>	Francie Brake/David Gangwer	757-481-4528;412-0222
Hospitality (dinners/luncheons)	Francie Brake	757-481-4528
Receptions	Francie Brake	757-481-4528
Weddings	Marilyn Jessen	757- 496-2099
Funerals	Madeline Kuhlman	757-425-7895
St. Columba - sandwiches	Francie Brake	757-481-4528
<i>Member Care Committee</i>	Beverly Parker/Darrell Kennedy	757- 481-0555;217-2381
Prayer Group	Jackie Alcorn	757- 428-4131
TLC Group	Darrell Kennedy	757- 217-2381
<i>Christian Ser. & Mission Committee</i>	Chuck Steenburgh/Jackie Alcorn	757-481-5741/428-4131
Angel Tree	Donice Schumm	757-481-3688
Apple Tree	Ruth & Chuck Steenburgh	757-481-5741

Who You Gonna Call?

Beach Bag	Donice Schumm	757-481-3688
Blood Drive	Jodi Rossman	757-235-3903
Boy Scouts	Ron Moore	757-481-3099
Cards for St. Jude's	June Beeler	757-226-9698; 377-1023
College Bound Foster Child	Jackie Alcorn	757-428-4131; 618-3321
Faith Works	Joe Bell	757-777-4583
Food Closet	Scotty Gaiennie	757-481-9172
Holiday Food Baskets	Donice Schumm	757-481-3688
Homeless Shelter	Tom Carter	757-481-1189
Housing/Utility Assistance	Mary Lou Crifasi	757-496-2620
Meals on Wheels	Tom Carter	757-481-1189
Nickel A Meal	Gail Schwartz	757-496-2620 ; 757-404-6669
PiN (<i>People in Need</i>)	Marsha Miles	757-481-0902
Samaritan House	Tom Carter	481-1189
Seaman's House	Francie & Thad Brake	757-481-4528
Special Offerings	Anne Zach	757-481-4585
St. Columba	Tom Carter	757-481-1189
Used bottle cap program	Betty Douglas	757-481-5854; 472-5305
Vet's House	Cindy Hogan	757-496-8318

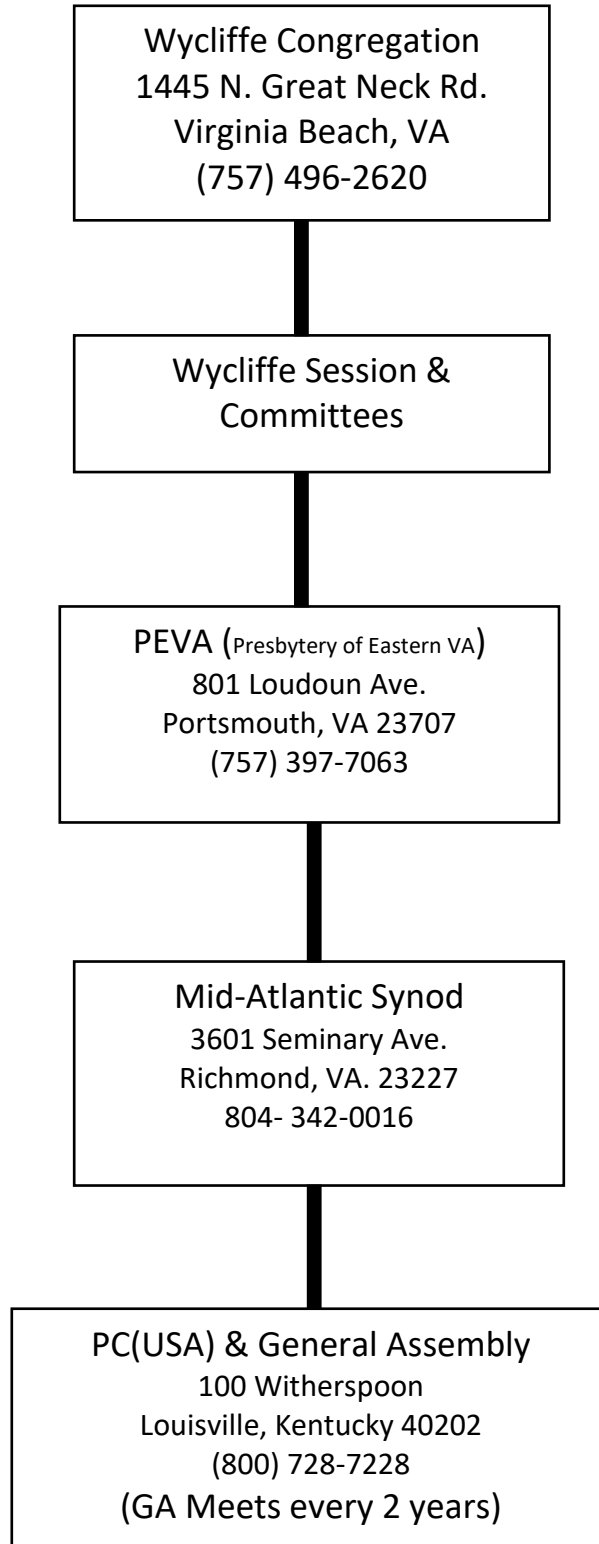
Outreach Services

Outreach Committee	Robin LaVigne/Carolyn Lindsey	757-481-6286/963-0032
Website	Robin L./ Carolyn L.	757-481-6286/963-0032
Facebook page	Robin L./ Carolyn L.	757-481-6286/963-0032

Support Ministries

A S & F Committee	Jim Haynie/Lisa Sowell	757-288-3893; 412-2063
Facilities Committee	Garland Miles /Cathy Rotch	757-650-3006/321-1809
Finance	Jim Haynie	757-481-7299; 757-286-2047
Long range Plan. & Review	Bob Prestridge	757-363-2661; 757-335-2661
Newsletter	Mary Lou Crifasi	757-496-2620
Nominating Committee	Gail Schwartz	757-404-6669
Personnel	Bob Prestridge	757-363-2661
Treasurer	Vickie Burden	757-481-9249
Session	Pastor Bugg or Clerk of Session	757-496-2620 or 757-404-6669

Table of Organization for PC(USA), PEVA & Wycliffe



PEVA contains 57 churches:

***Includes:** Eastern Shore, Chesapeake; Franklin; Gloucester; Hampton; Newport News; Norfolk; Portsmouth; Suffolk; Virginia Beach; Williamsburg; York County*



Contains 14 Presbyteries

*10,038 congregations
1,760,200 people in
2013*



In Memoriam

January 1, 2016 - December 31, 2016

Frances Basnight

Jessie Fortune

Joe Hayes

Betty Holmes

Harry Kuper

Lloyd Robertson

Nora Grace Sawyer

Mary Swanson