



FAYETTE COUNTY PUBLIC SCHOOLS

---

# **Board Voting Boundary Lines Review**

November 14, 2022

# Objective

- ❑ Recurring process, no more often than every five years
- ❑ Adjust current voting boundaries with 2020 census blocks
- ❑ Maintain new county precinct lines as far as practical
- ❑ Create scenarios for Board vote that meet state and federal requirements

# Summary - Goals

- ❑ Create voting districts that have less than 10% deviation between least and most populous
- ❑ Maintain county voting precinct lines as far as practical
- ❑ Avoid drawing lines that create vote dilution for minority groups

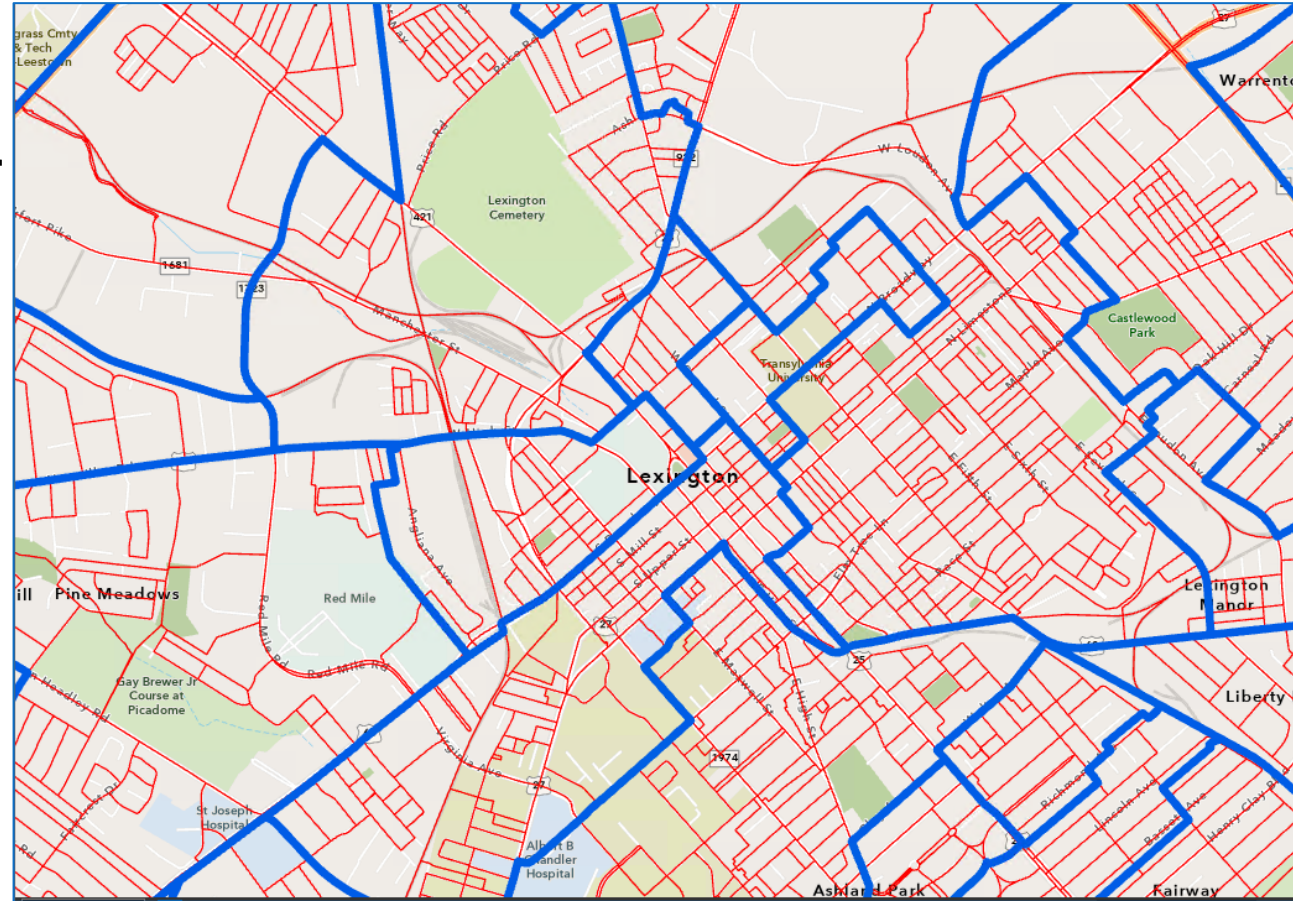
# Reasoning

- ❑ 2020 census data, which became available Fall 2021, showed growth in one district that meant the five voting districts were not as even in overall population as District would want
- ❑ Information on new county precinct lines not available until after January 1 deadline for updating voting boundary lines for 2022
- ❑ Began work on new voting boundary lines for 2023

# Data Utilized for District Board Area Review/Adjustments

- ❑ Fayette County Voting Precincts
- ❑ Census Block Data
  - ❑ 2020 census data released in September 2021
  - ❑ Used to determine Total Population of each Board Member Area
- ❑ American Community Survey – Citizens Voting Age Population (CVAP)
  - ❑ 5-year estimates released annually
    - ❑ Latest 2015-2019 (released in February 2021)
  - ❑ Based on voting age population
  - ❑ Used to as a reference source

Source: Census Bureau

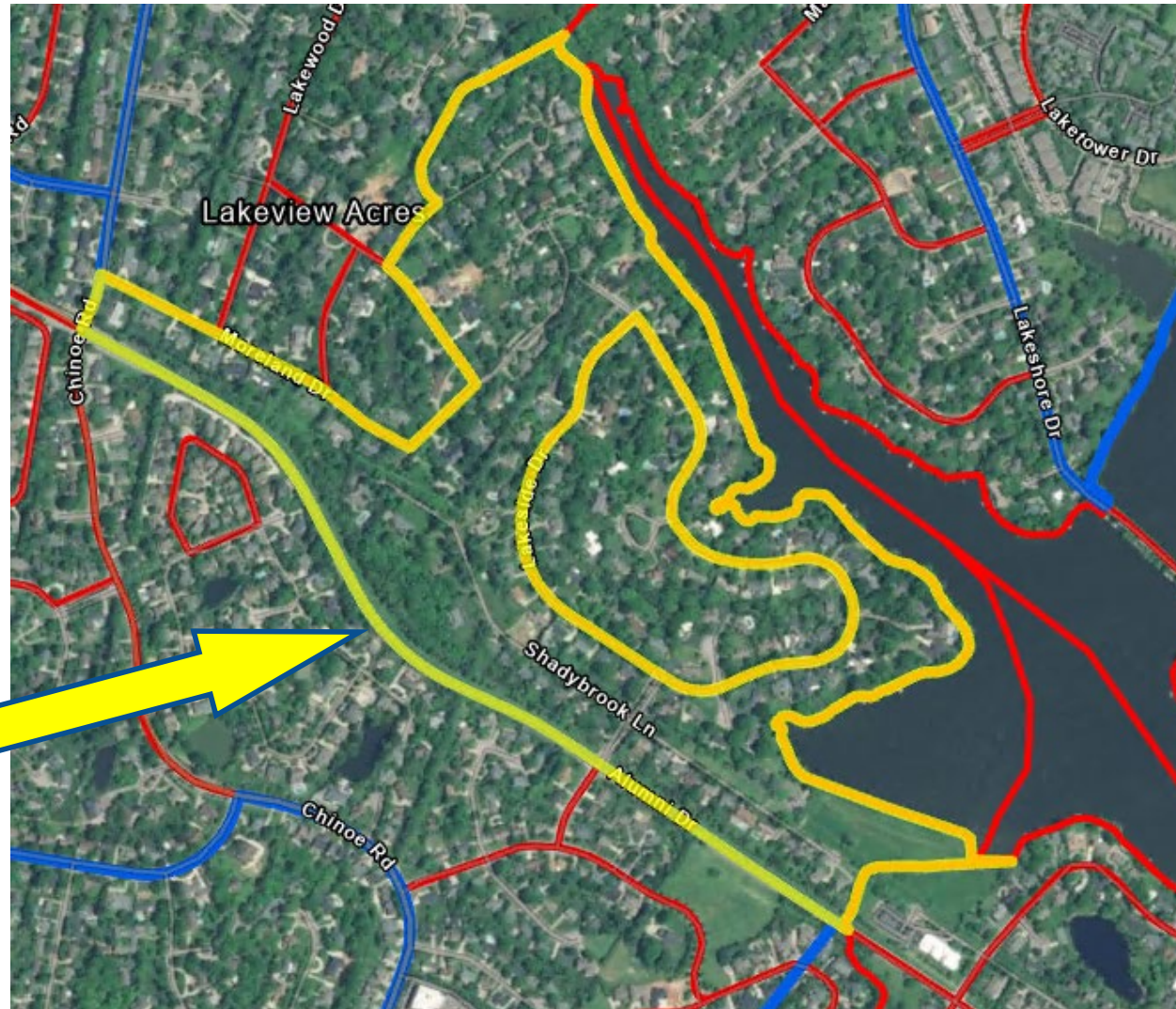
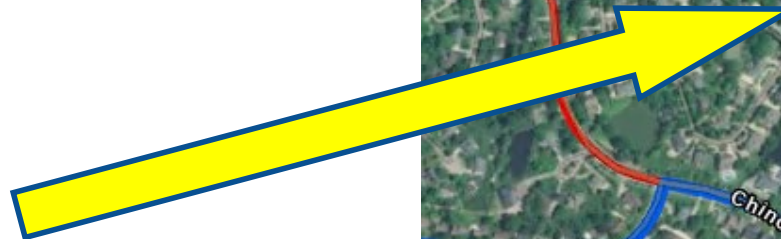




# Data Utilized for District Board Area Review/Adjustments

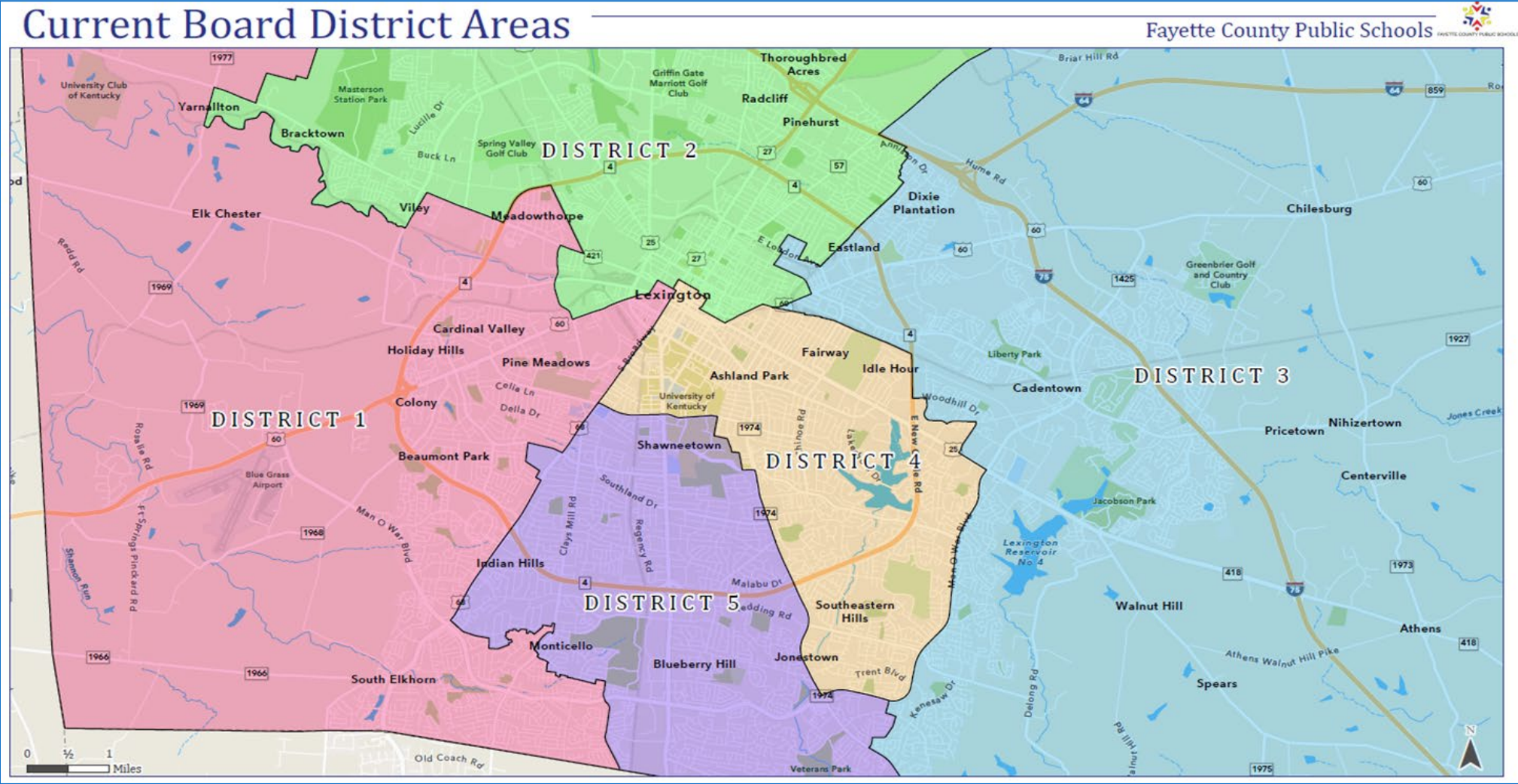
- ❑ Census Blocks
  - ❑ Smallest level of geography
  - ❑ Based upon:
    - ❑ Visible features:
      - ❑ Roads, rivers, railroad tracks
    - ❑ Non-Visible features:
      - ❑ Property lines, cities, townships
  - ❑ Adjusted every 10 years

Some Census Blocks  
are Irregularly Shaped





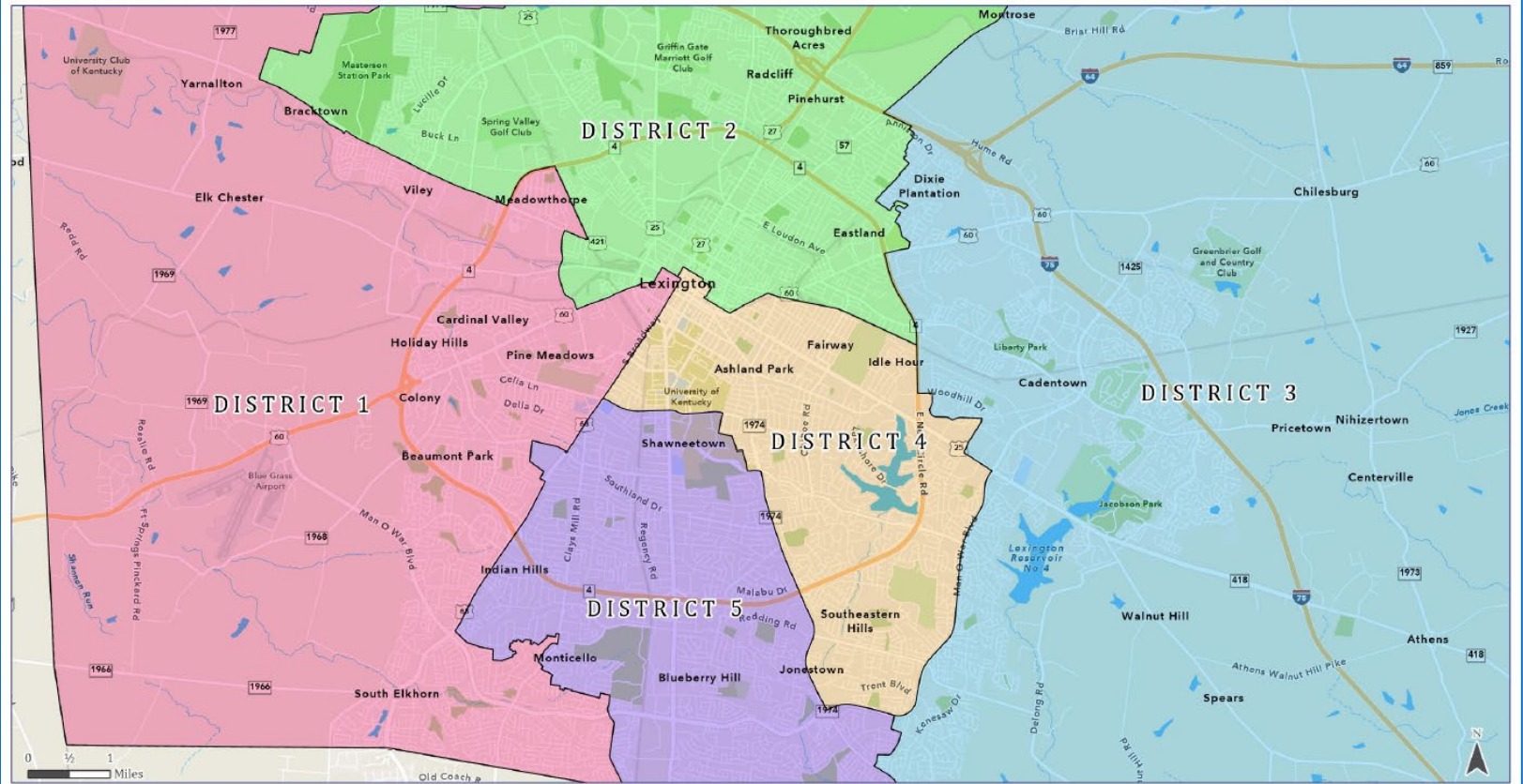
# Current Board District Areas



# Scenario 1 - Board District Areas

Board District Areas - Scenario 1

Fayette County Public Schools



Scenario 1	Total Population	Variance	Citizen Voting Age Population 2015-2019 Estimate
District 1	64,783	0.4%	47,190
District 2	63,788	-1.1%	45,561
District 3	66,484	3.1%	47,676
District 4	63,704	-1.3%	51,318
District 5	63,801	-1.1%	48,634
Totals	322,560	Max Variance 4.3%	240,379

**Disclaimer**  
Of necessity, the outer jurisdictional district boundaries shown here are based on Census block geography (rather than Fayette County Public Schools geography) and are approximations of the boundaries as implemented by election officials.

A Census block is the smallest geographic census unit. Blocks can be bounded by visible features such as streets, roads, streams, and railroad tracks, and by nonvisible boundaries, such as selected property lines and city, township, school district, and county limits. Census blocks change every decade.



Data Sources: Census Bureau Kentucky; Statewide Database Fayette County Public Schools; Davis Demographics

Published Date: 10/5/2022

**DAVIS**  
DEMOGRAPHICS



# Scenario 1 - Board District Areas

2020 Census Population District Wide - Current Areas						
Population	District 1	District 2	District 3	District 4	District 5	Total
Total Population	60,791	62,715	71,549	63,704	63,801	322,560
Population Variance	-3,721	-1,797	7,037	-808	-711	--
	-5.8%	-2.8%	10.9%	-1.3%	-1.1%	--
Hispanic/Latino	7,391	9,352	5,284	3,860	3,857	29,744
	12.2%	14.9%	7.4%	6.1%	6.0%	9.2%
White	41,575	30,747	48,994	45,656	48,368	215,340
	68.4%	49.0%	68.5%	71.7%	75.8%	66.8%
Asian	3,546	841	3,598	2,153	3,236	13,374
	5.8%	1.3%	5.0%	3.4%	5.1%	4.1%
Black/African American	5,579	18,538	9,703	8,612	5,069	47,501
	9.2%	29.6%	13.6%	13.5%	7.9%	14.7%
American Indian/Alaska Native	73	122	77	108	100	480
	0.1%	0.2%	0.1%	0.2%	0.2%	0.1%
Native Hawaiian/Pacific Islander	33	32	21	21	26	133
	0.1%	0.1%	0.0%	0.0%	0.0%	0.0%
2 or More Races	2,409	2,753	3,562	2,762	2,835	14,321
	4.0%	4.4%	5.0%	4.3%	4.4%	4.4%
Other	185	330	310	532	310	1,667
	0.3%	0.5%	0.4%	0.8%	0.5%	0.5%

2020 Census Population District Wide - Plan 1						
Population	District 1	District 2	District 3	District 4	District 5	Total
Total Population	64,783	63,788	66,484	63,704	63,801	322,560
Population Variance	271	-724	1,972	-808	-711	--
	0.4%	-1.1%	3.1%	-1.3%	-1.1%	--
Hispanic/Latino	7,906	9,459	4,662	3,860	3,857	29,744
	12.2%	14.8%	7.0%	6.1%	6.0%	9.2%
White	43,832	31,368	46,116	45,656	48,368	215,340
	67.7%	49.2%	69.4%	71.7%	75.8%	66.8%
Asian	3,656	799	3,530	2,153	3,236	13,374
	5.6%	1.3%	5.3%	3.4%	5.1%	4.1%
Black/African American	6,427	18,901	8,492	8,612	5,069	47,501
	9.9%	29.6%	12.8%	13.5%	7.9%	14.7%
American Indian/Alaska Native	74	137	61	108	100	480
	0.1%	0.2%	0.1%	0.2%	0.2%	0.1%
Native Hawaiian/Pacific Islander	33	33	20	21	26	133
	0.1%	0.1%	0.0%	0.0%	0.0%	0.0%
2 or More Races	2,656	2,755	3,313	2,762	2,835	14,321
	4.1%	4.3%	5.0%	4.3%	4.4%	4.4%
Other	199	336	290	532	310	1,667
	0.3%	0.5%	0.4%	0.8%	0.5%	0.5%

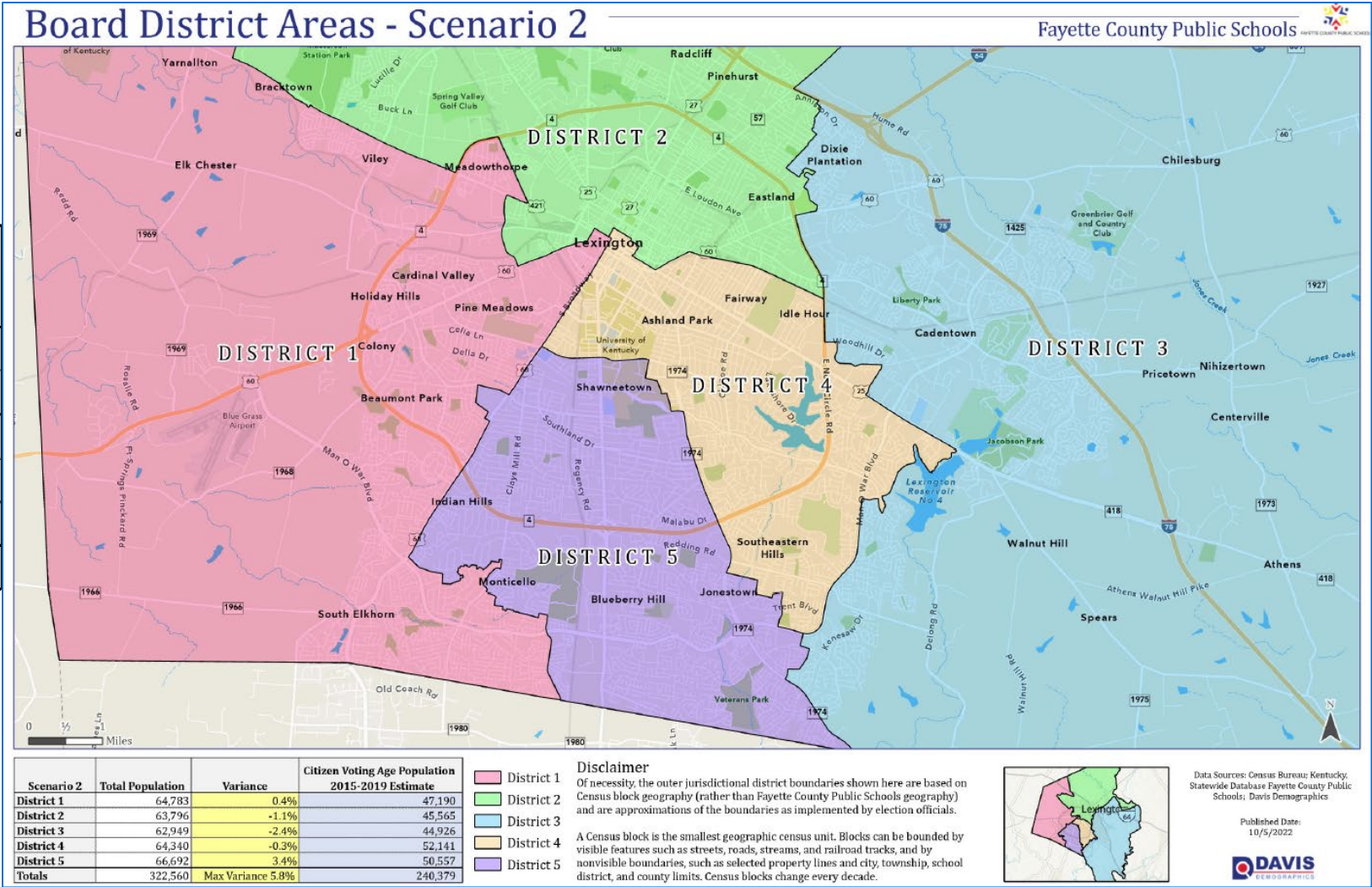
# Scenario 1 - Board District Areas

Citizens by Voting Age Population Estimate (2015-2019) - Current Areas						
CVA Population	District 1	District 2	District 3	District 4	District 5	Total
Total CVA Population	44,412	44,814	51,201	51,318	48,634	240,379
Population Variance	-3,664	-3,262	3,126	3,242	559	--
	-7.6%	-6.8%	6.5%	6.7%	1.2%	--
Hispanic/Latino	1,278	1,671	1,108	1,063	1,551	6,671
	2.9%	3.7%	2.2%	2.1%	3.2%	2.8%
White	35,715	27,418	39,342	42,064	41,430	185,968
	80.4%	61.2%	76.8%	82.0%	85.2%	77.4%
Asian	1,500	365	1,793	776	1,301	5,735
	3.4%	0.8%	3.5%	1.5%	2.7%	2.4%
Black/African American	4,799	13,899	7,129	6,158	3,459	35,445
	10.8%	31.0%	13.9%	12.0%	7.1%	14.7%
American Indian/Alaska Native	268	454	397	254	127	1,500
	0.6%	1.0%	0.8%	0.5%	0.3%	0.6%
Native Hawaiian/Pacific Islander	4	0	25	0	0	29
	0.0%	0.0%	0.0%	0.0%	0.0%	0.0%
2 or More Races	849	1,006	1,407	1,003	767	5,031
	1.9%	2.2%	2.7%	2.0%	1.6%	2.1%

Citizens by Voting Age Population Estimate (2015-2019) - Plan 1						
CVA Population	District 1	District 2	District 3	District 4	District 5	Total
Total CVA Population	47,190	45,561	47,676	51,318	48,634	240,379
Population Variance	-886	-2,515	-400	3,242	559	--
	-1.8%	-5.2%	-0.8%	6.7%	1.2%	--
Hispanic/Latino	1,438	1,591	1,026	1,063	1,551	6,671
	3.0%	3.5%	2.2%	2.1%	3.2%	2.8%
White	37,705	27,887	36,883	42,064	41,430	185,968
	79.9%	61.2%	77.4%	82.0%	85.2%	77.4%
Asian	1,566	309	1,783	776	1,301	5,735
	3.3%	0.7%	3.7%	1.5%	2.7%	2.4%
Black/African American	5,274	14,229	6,325	6,158	3,459	35,445
	11.2%	31.2%	13.3%	12.0%	7.1%	14.7%
American Indian/Alaska Native	276	541	302	254	127	1,500
	0.6%	1.2%	0.6%	0.5%	0.3%	0.6%
Native Hawaiian/Pacific Islander	4	0	25	0	0	29
	0.0%	0.0%	0.1%	0.0%	0.0%	0.0%
2 or More Races	927	1,004	1,331	1,003	767	5,031
	2.0%	2.2%	2.8%	2.0%	1.6%	2.1%

# Scenario 2 - Board District Areas

Scenario 2	Total Population	Variance	Citizen Voting Age Population 2015-2019 Estimate
District 1	64,783	0.4%	47,190
District 2	63,796	-1.1%	45,565
District 3	62,949	-2.4%	44,926
District 4	64,340	-0.3%	52,141
District 5	66,692	3.4%	50,557
Totals	322,560	Max Variance 5.8%	240,379





# Scenario 2 - Board District Areas

2020 Census Population District Wide - Current Areas						
Population	District 1	District 2	District 3	District 4	District 5	Total
Total Population	60,791	62,715	71,549	63,704	63,801	322,560
Population Variance	-3,721	-1,797	7,037	-808	-711	--
	-5.8%	-2.8%	10.9%	-1.3%	-1.1%	--
Hispanic/Latino	7,391	9,352	5,284	3,860	3,857	29,744
	12.2%	14.9%	7.4%	6.1%	6.0%	9.2%
White	41,575	30,747	48,994	45,656	48,368	215,340
	68.4%	49.0%	68.5%	71.7%	75.8%	66.8%
Asian	3,546	841	3,598	2,153	3,236	13,374
	5.8%	1.3%	5.0%	3.4%	5.1%	4.1%
Black/African American	5,579	18,538	9,703	8,612	5,069	47,501
	9.2%	29.6%	13.6%	13.5%	7.9%	14.7%
American Indian/Alaska Native	73	122	77	108	100	480
	0.1%	0.2%	0.1%	0.2%	0.2%	0.1%
Native Hawaiian/Pacific Islander	33	32	21	21	26	133
	0.1%	0.1%	0.0%	0.0%	0.0%	0.0%
2 or More Races	2,409	2,753	3,562	2,762	2,835	14,321
	4.0%	4.4%	5.0%	4.3%	4.4%	4.4%
Other	185	330	310	532	310	1,667
	0.3%	0.5%	0.4%	0.8%	0.5%	0.5%

2020 Census Population District Wide - Plan 2						
Population	District 1	District 2	District 3	District 4	District 5	Total
Total Population	64,783	63,796	62,949	64,340	66,692	322,560
Population Variance	271	-716	-1,563	-172	2,180	--
	0.4%	-1.1%	-2.4%	-0.3%	3.4%	--
Hispanic/Latino	7,906	9,460	4,428	3,819	4,131	29,744
	12.2%	14.8%	7.0%	5.9%	6.2%	9.2%
White	43,832	31,370	43,778	46,052	50,308	215,340
	67.7%	49.2%	69.5%	71.6%	75.4%	66.8%
Asian	3,656	799	3,311	2,280	3,328	13,374
	5.6%	1.3%	5.3%	3.5%	5.0%	4.1%
Black/African American	6,427	18,906	7,998	8,657	5,513	47,501
	9.9%	29.6%	12.7%	13.5%	8.3%	14.7%
American Indian/Alaska Native	74	137	55	112	102	480
	0.1%	0.2%	0.1%	0.2%	0.2%	0.1%
Native Hawaiian/Pacific Islander	33	33	18	23	26	133
	0.1%	0.1%	0.0%	0.0%	0.0%	0.0%
2 or More Races	2,656	2,755	3,091	2,853	2,966	14,321
	4.1%	4.3%	4.9%	4.4%	4.4%	4.4%
Other	199	336	270	544	318	1,667
	0.3%	0.5%	0.4%	0.8%	0.5%	0.5%

# Scenario 2 - Board District Areas

Citizens by Voting Age Population Estimate (2015-2019) - Current Areas						
CVA Population	District 1	District 2	District 3	District 4	District 5	Total
<b>Total CVA Population</b>	44,412	44,814	51,201	51,318	48,634	240,379
<b>Population Variance</b>	-3,664	-3,262	3,126	3,242	559	--
	-7.6%	-6.8%	6.5%	6.7%	1.2%	--
<b>Hispanic/Latino</b>	1,278	1,671	1,108	1,063	1,551	6,671
	2.9%	3.7%	2.2%	2.1%	3.2%	2.8%
<b>White</b>	35,715	27,418	39,342	42,064	41,430	185,968
	80.4%	61.2%	76.8%	82.0%	85.2%	77.4%
<b>Asian</b>	1,500	365	1,793	776	1,301	5,735
	3.4%	0.8%	3.5%	1.5%	2.7%	2.4%
<b>Black/African American</b>	4,799	13,899	7,129	6,158	3,459	35,445
	10.8%	31.0%	13.9%	12.0%	7.1%	14.7%
<b>American Indian/Alaska Native</b>	268	454	397	254	127	1,500
	0.6%	1.0%	0.8%	0.5%	0.3%	0.6%
<b>Native Hawaiian/Pacific Islander</b>	4	0	25	0	0	29
	0.0%	0.0%	0.0%	0.0%	0.0%	0.0%
<b>2 or More Races</b>	849	1,006	1,407	1,003	767	5,031
	1.9%	2.2%	2.7%	2.0%	1.6%	2.1%

Citizens by Voting Age Population Estimate (2015-2019) - Plan 2						
CVA Population	District 1	District 2	District 3	District 4	District 5	Total
<b>Total CVA Population</b>	47,190	45,565	44,926	52,141	50,557	240,379
<b>Population Variance</b>	-886	-2,510	-3,150	4,065	2,481	--
	-1.8%	-5.2%	-6.6%	8.5%	5.2%	--
<b>Hispanic/Latino</b>	1,438	1,591	1,003	1,078	1,560	6,671
	3.0%	3.5%	2.2%	2.1%	3.1%	2.8%
<b>White</b>	37,705	27,890	34,839	42,481	43,054	185,968
	79.9%	61.2%	77.5%	81.5%	85.2%	77.4%
<b>Asian</b>	1,566	309	1,694	865	1,301	5,735
	3.3%	0.7%	3.8%	1.7%	2.6%	2.4%
<b>Black/African American</b>	5,274	14,230	5,838	6,409	3,694	35,445
	11.2%	31.2%	13.0%	12.3%	7.3%	14.7%
<b>American Indian/Alaska Native</b>	276	541	291	265	127	1,500
	0.6%	1.2%	0.6%	0.5%	0.3%	0.6%
<b>Native Hawaiian/Pacific Islander</b>	4	0	25	0	0	29
	0.0%	0.0%	0.1%	0.0%	0.0%	0.0%
<b>2 or More Races</b>	927	1,004	1,236	1,042	822	5,031
	2.0%	2.2%	2.8%	2.0%	1.6%	2.1%

# THANK YOU!

