



Infection Control Nurses of CT/ DPH HAI Monthly Meeting May 25, 2022

Welcome and Introductions



This call is being recorded and will be posted to the [ICNC website](#)



Infection Control Nurses of Connecticut/ Department of Public Health Healthcare Associated Infections Monthly Meeting Agenda

April 27, 2022

- | | |
|---|-------------------|
| 1. Welcome and Introductions | Kris Magnussen |
| 2. COVID NH Data Updates | Summer Shore |
| 3. Ventilation in Nursing Homes (fan use) | Kathy Cusano |
| 4. HCW Return to Work | Abby H. Griffin |
| 5. Booster Dose Recommendations | Abby H. Griffin |
| 6. CT Nursing Home COVID-19 Data Webpage | Summer Shore |
| 7. Monkeypox | Kathy Cusano |
| 8. Q&A | Members and panel |

* Suggestions for future agenda Items?

The ICNC Annual Spring Seminar

Meeting IP Challenges in Long Term Care

Friday, June 10, 2022
7:45 am - 3:00 pm

Registration begins at 7:45 am
at the Aqua Turf Club
556 Mulberry Street
Plantsville, CT 06479
(860) 621- 9335



This activity has been submitted to the Connecticut Nurses' Association for approval to award contact hours. The Connecticut Nurses' Association is accredited as an approver of continuing nursing education by the American Nurses Credentialing Center's Commission on Accreditation.

7:45am - 8:30 am
Registration and Vendors

8:30 am - 8:45 am
Welcome

8:45am - 9:45 am
"Developing Successful IP Protocols in Your Long-Term Care Community"
Dr. Buffy Lloyd-Krejci

9:45am - 10:45am
"The Most Overlooked Infection Prevention & Control Practices"
Dr. Buffy Lloyd-Krejci

10:45am - 11:45pm
Break with the Vendors

11:45am - 12:45pm
"How the Covid-19 Pandemic Impacted LTC and How We Move Forward with Change"
Dr. Buffy Lloyd-Krejci

12:45pm - 1:45pm
Lunch, Vendors, Raffles

1:45pm - 2:45pm
"Update from Facility Licensing"
Kim Hrecniak RN
CT DPH

2:45pm-3:00pm
Evaluations, Certificates & Raffles

Disclosure Policy

It is the policy of ICNC that all speakers and planners disclose any real or apparent conflicts of interest related to the content of the educational activity and also disclose discussions of off-label or investigational uses of drugs or devices during their presentation(s). These disclosures will be made before the presentation.

Objectives

They can be found on the ICNC Website located at
www.infectioncontrolct.org

Registration Information

Cost: \$100
Registration and payment only accepted via
www.infectioncontrolct.org before June 6th.
Seating is limited, so register early.

Continental breakfast and lunch provided.

Registration fees are nonrefundable but may be transferred to another facility employee

Dr. Buffy Lloyd- Krejci CIC



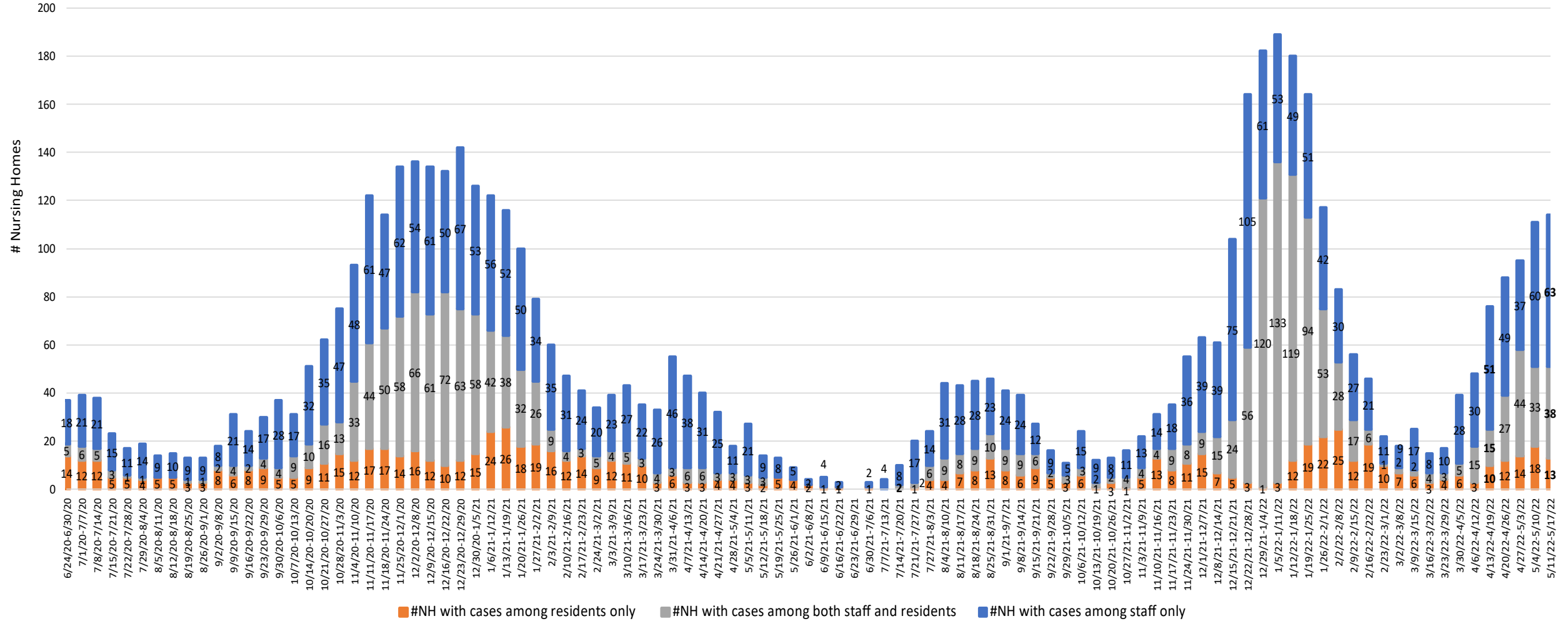
She is the author of *Broken: How the Global Pandemic Uncovered Nursing Home Industry in Need of Repair and The Heroic Staff Fighting for Change.*

Dr. Lloyd-Krejci is one of the foremost authorities on infection prevention and control in the long-term care industry. She is a frequent contributor and interview source for national and trade press concerning infection prevention and control and mitigation.

Her book will be available for \$15 cash purchase.

COVID-19 Nursing Home Data

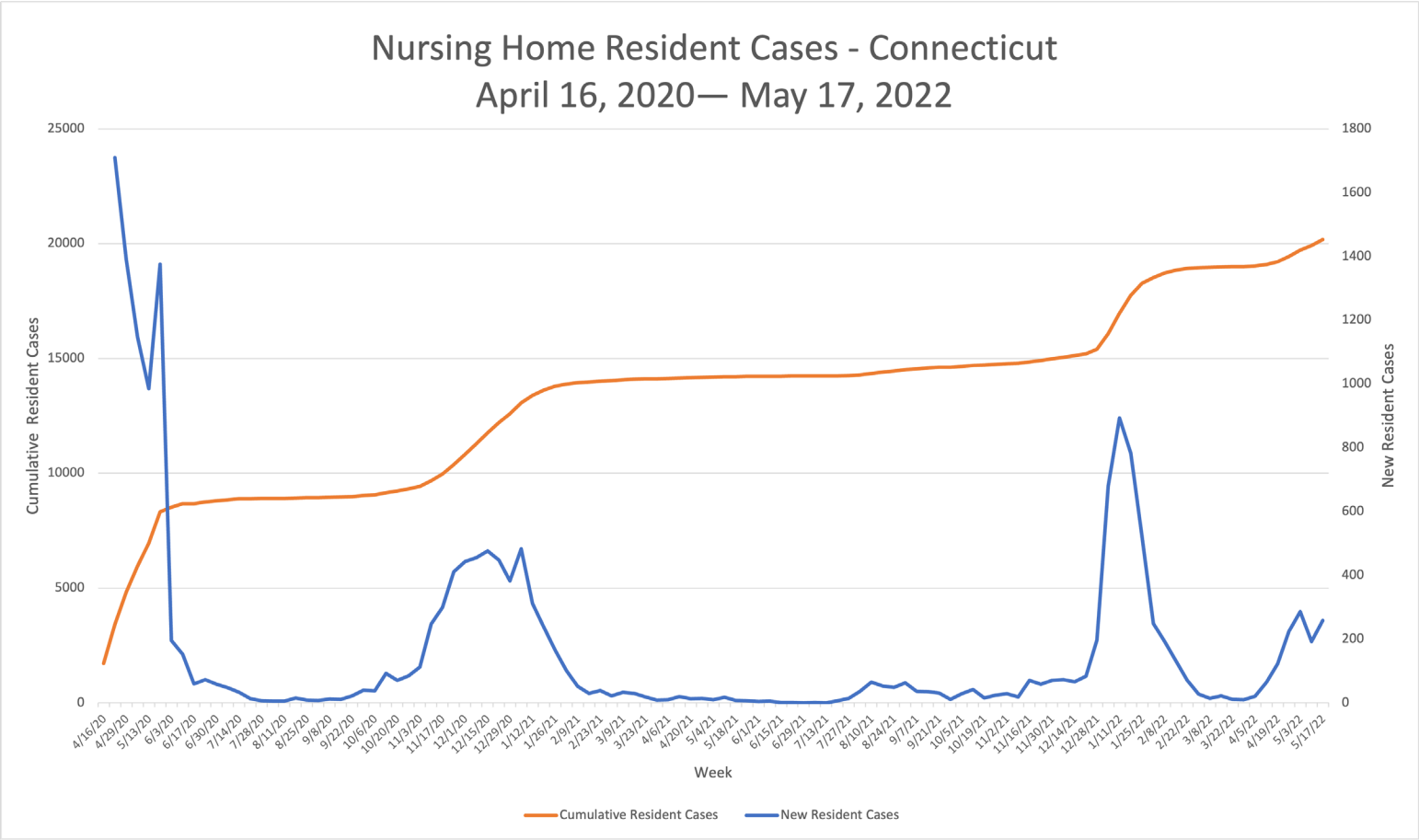
Nursing Homes with Positive Staff or Residents June 17, 2020—May 17, 2022



Nursing Home Resident Incidence, statewide

April 16, 2020 – May 17, 2022

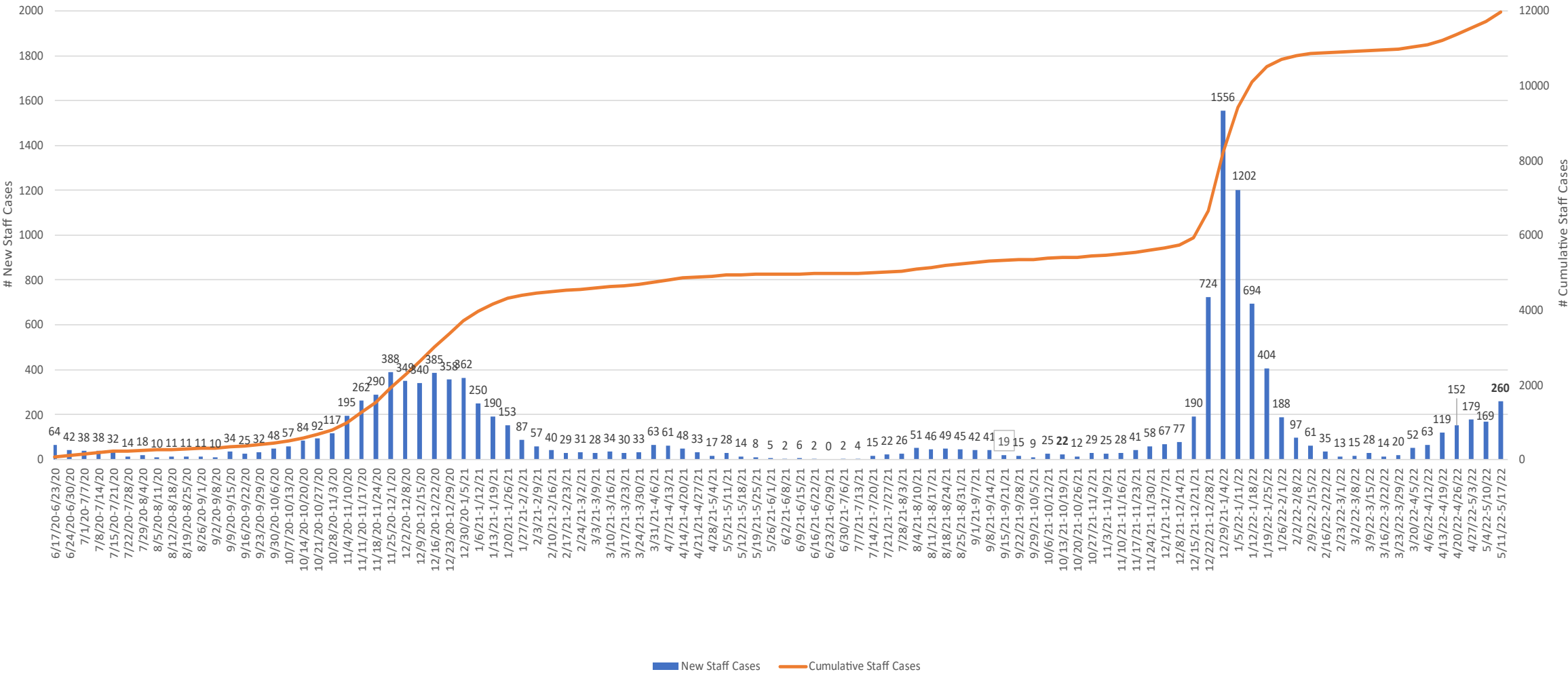
Resident Census: 17,009



Date Reported	New Resident Cases (diagnosed this week)
1-Mar	27
8-Mar	13
15-Mar	22
22-Mar	11
29-Mar	14
5-Apr	21
12-Apr	64
19-Apr	123
26-Apr	224
3-May	286
10-May	192
17-May	259

Facility Metrics	#Nursing Homes
New res. cases, last 2 weeks	78 (+4)
No new res. cases, >2 weeks	127

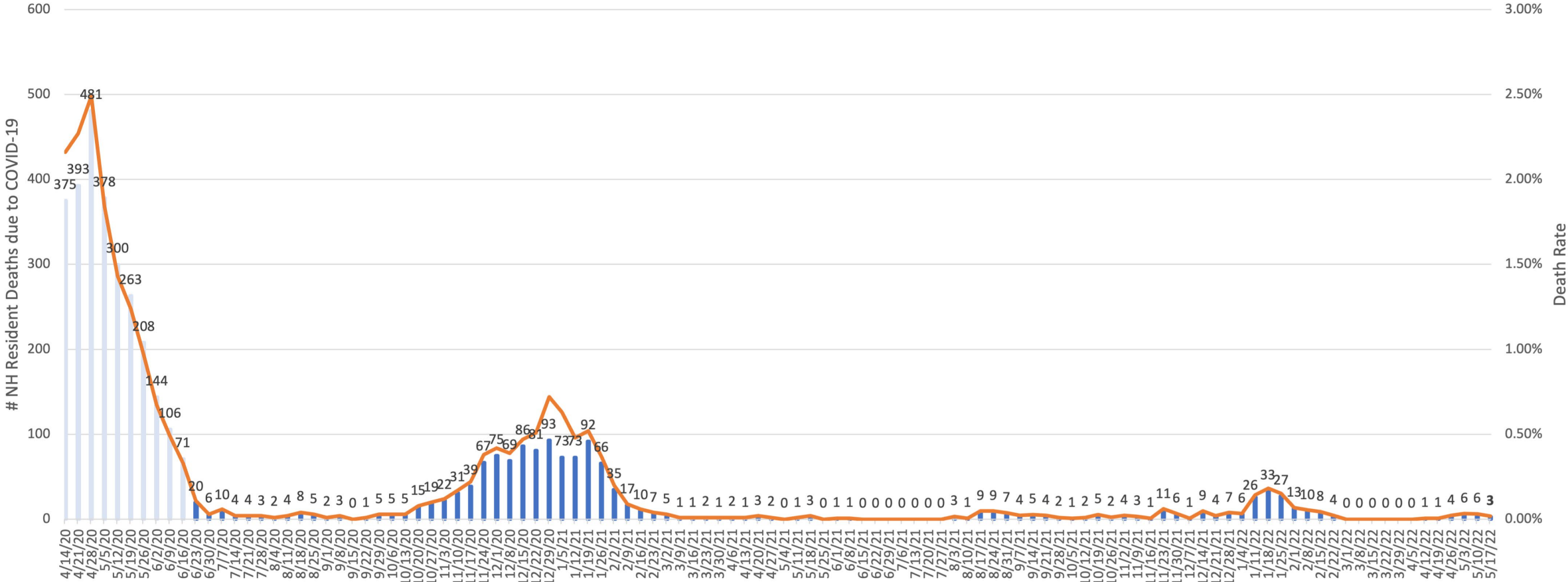
Staff Cases in Connecticut Nursing Homes
June 17, 2020 — May 17, 2022

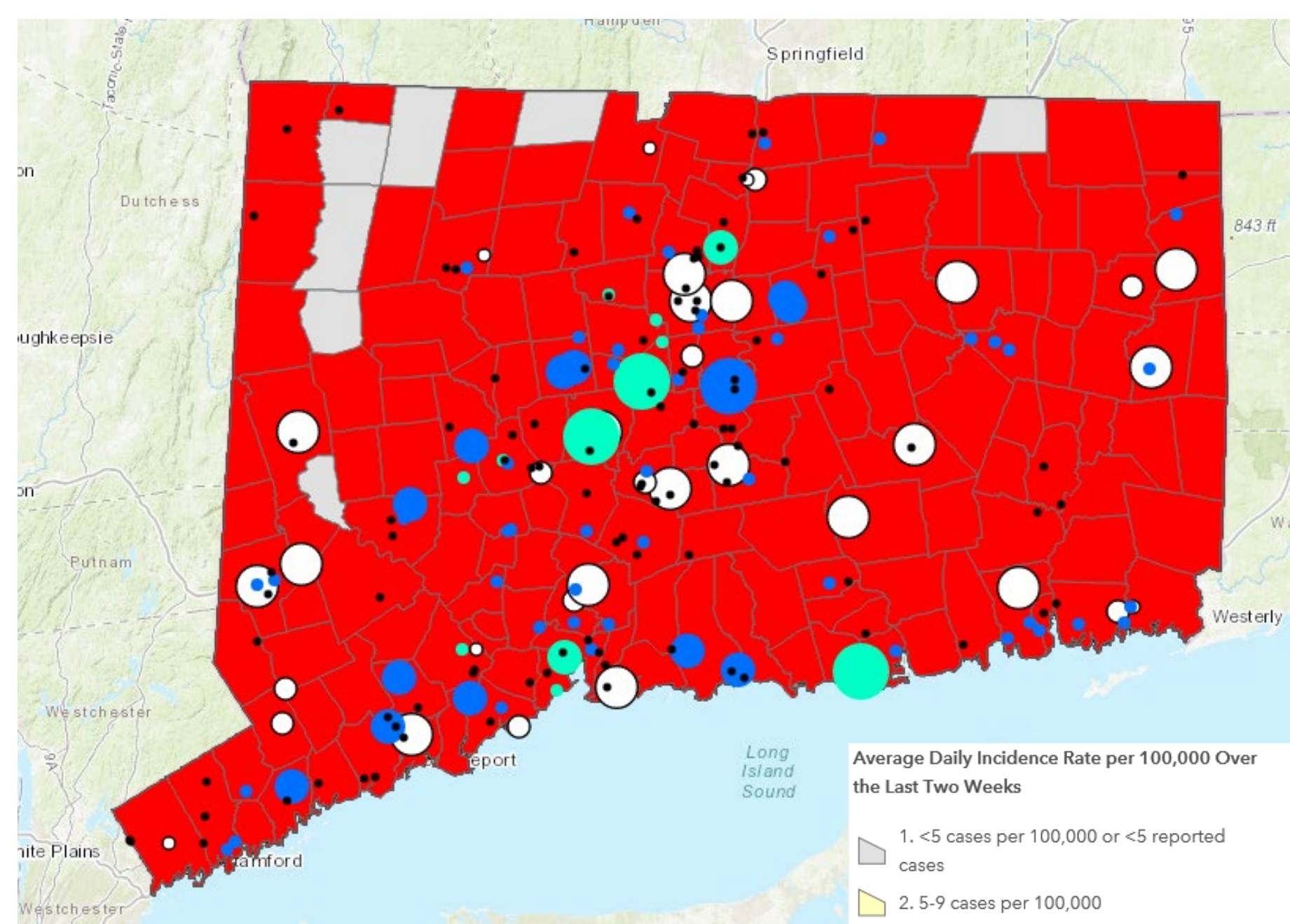


Nursing Home Resident Deaths Associated to COVID -19

4/15/2020 — 5/17/2022

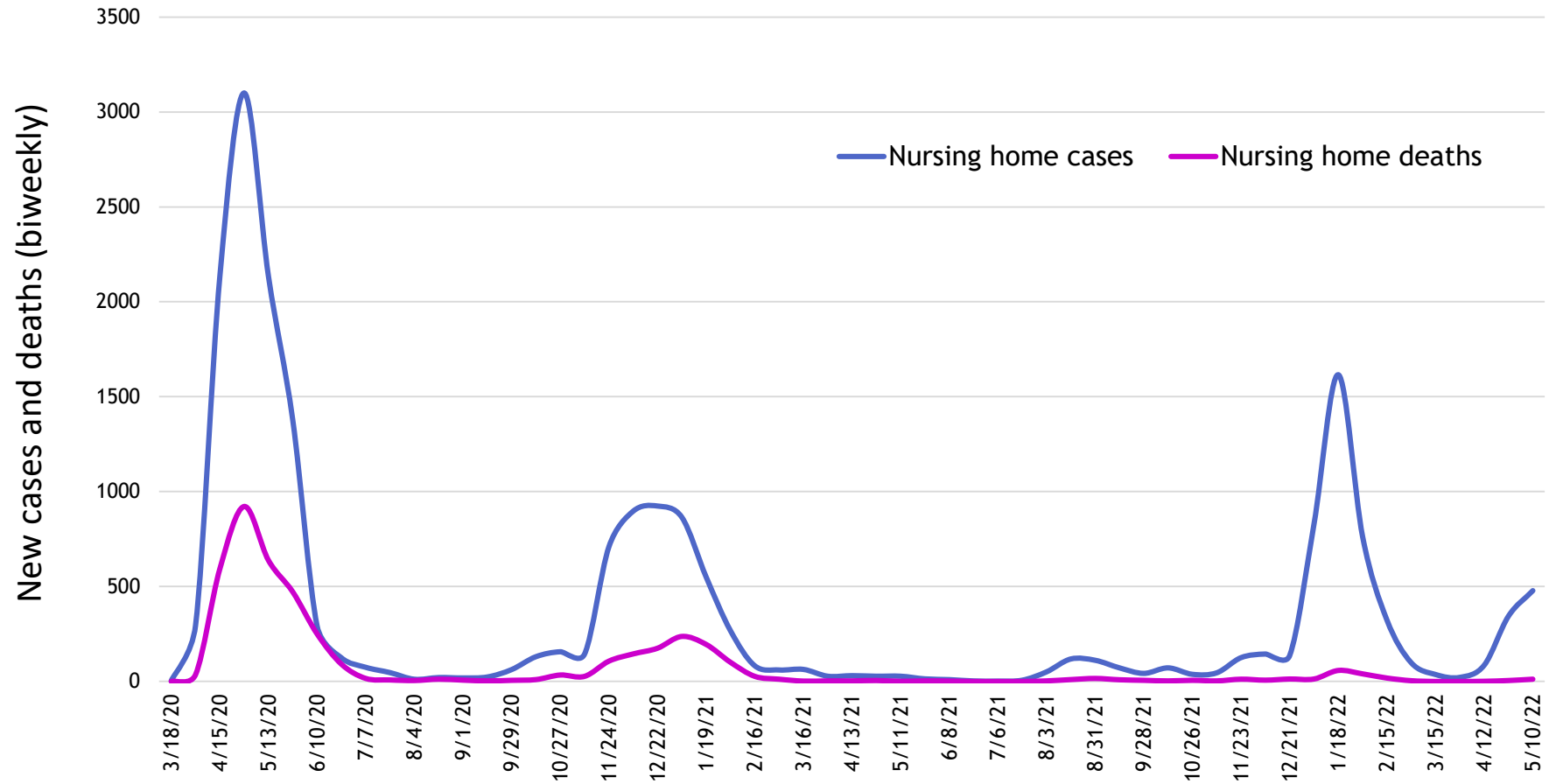
#NH resident deaths due to COVID-19 Death Rate





5/11/22-5/17/22

COVID-19 cases and deaths in Nursing Homes



Community Transmission

Connecticut

[State Health Department](#) 

7-day Metrics

Cases	9,534
% Positivity	N/A %
Deaths	12
% of Population ≥ 5 Years of Age Fully Vaccinated	83.9%
New Hospital Admissions (7-Day Moving Avg)	65.43

On this page:

[Cases & Deaths](#)

[Testing](#)

[Vaccinations](#)

[Hospitalizations](#)

[Community Characteristics](#)

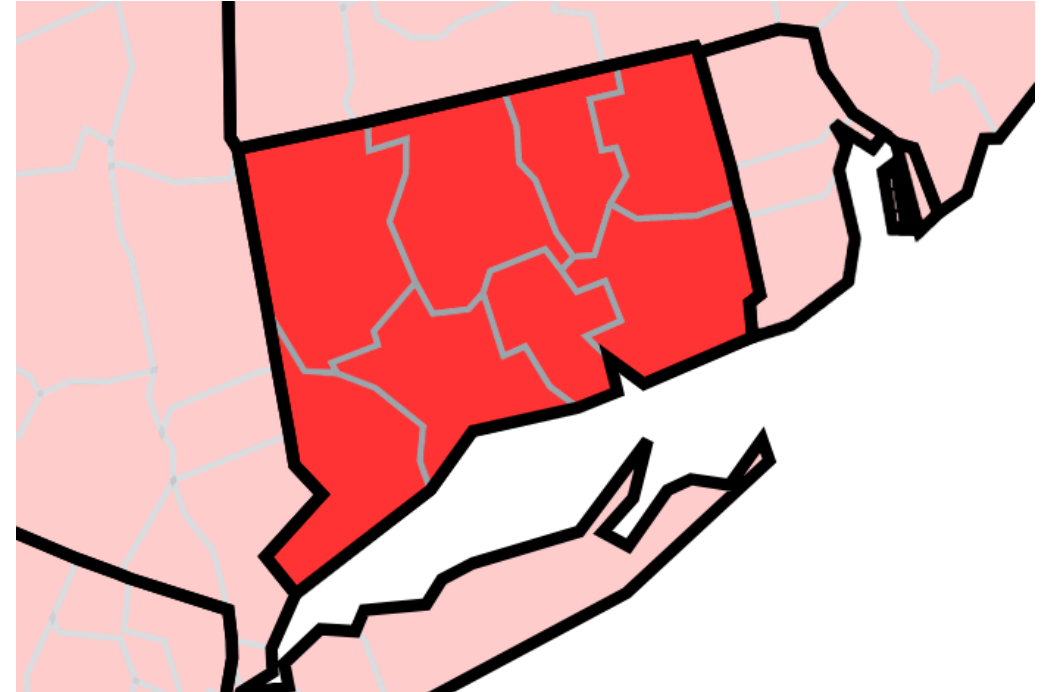
[Data Downloads and Footnotes](#)

Data Type:

Community Transmission

Map Metric:

Community Transmission



*as of 5/24/2022

Source: [CDC COVID Tracker](#)

Fan Use in Nursing Homes

Fans are safe to use

- Facilities can use fans to increase the effectiveness of open windows
 - One helpful strategy: use a window fan to exhaust room air to the outdoors

Fans improve room air mixing

- Help distribute supplied clean air and dilute viral particle concentration in room which reduces the likelihood of stagnant air pockets where viral concentrations can accumulate

While fan use is safe, there are some considerations:

- Fan Placement
 - Placement can vary based on each individual room configuration
 - Direct the fan discharge towards an unoccupied corner and wall spaces or up above the occupied zone
 - Avoid placing fans in a way that could potentially cause contaminated air to flow directly from one person to another
- Avoid using fans on the high-speed settings
- Use ceiling fans at low velocity and potentially in reverse flow direction(so air is pulled up toward ceiling)

Ventilation in Buildings

HCW Return to Work

Work Restrictions for HCP With SARS-CoV-2 Infection and Exposures

"Up to Date" with all recommended COVID-19 vaccine doses is defined in [Stay Up to Date with Your Vaccines | CDC](#)

For more details, including recommendations for healthcare personnel who are immunocompromised, have severe to critical illness, or are within 90 days of prior infection, refer to [Interim Guidance for Managing Healthcare Personnel with SARS-CoV-2 Infection or Exposure to SARS-CoV-2](#) (conventional standards) and [Strategies to Mitigate Healthcare Personnel Staffing Shortages](#) (contingency and crisis standards).

Work Restrictions for HCP With SARS-CoV-2 Infection

Vaccination Status	Conventional	Contingency	Crisis
Up to Date and Not Up to Date	10 days OR 7 days with negative test [†] , if asymptomatic or mild to moderate illness (with improving symptoms)	5 days with/without negative test, if asymptomatic or mild to moderate illness (with improving symptoms)	No work restriction, with prioritization considerations (e.g., types of patients they care for)

Work Restrictions for Asymptomatic HCP with SARS-CoV-2 Exposures

Vaccination Status	Conventional	Contingency	Crisis
Up to Date	No work restrictions, with negative test on days 1 [‡] and 5-7	No work restriction	No work restriction
Not Up to Date	10 days OR 7 days with negative test [†]	No work restriction with negative tests on days 1 [‡] , 2, 3, & 5-7 (if shortage of tests prioritize Day 1 to 2 and 5-7)	No work restrictions (test if possible)

[†]Negative test result within 48 hours before returning to work

[‡]For calculating day of test: 1) for those with infection consider day of symptom onset (or first positive test if asymptomatic) as day 0; 2) for those with exposure consider day of exposure as day 0





Booster Dose Recommendation

CDC updated and **strengthened** the recommendation for booster doses

- Children ages 5-11 are now eligible to receive a booster dose at least 5 months after completion of their primary series
- People ages 12-49 who **are** moderately or severely immunocompromised **should** receive a second booster dose at least 4 months after their first booster dose
- People ages 50 and older, regardless of immunocompromising conditions, **should** receive a second booster dose at least 4 months after their first dose
- [Clinical Guidance for COVID-19 Vaccination | CDC](#)

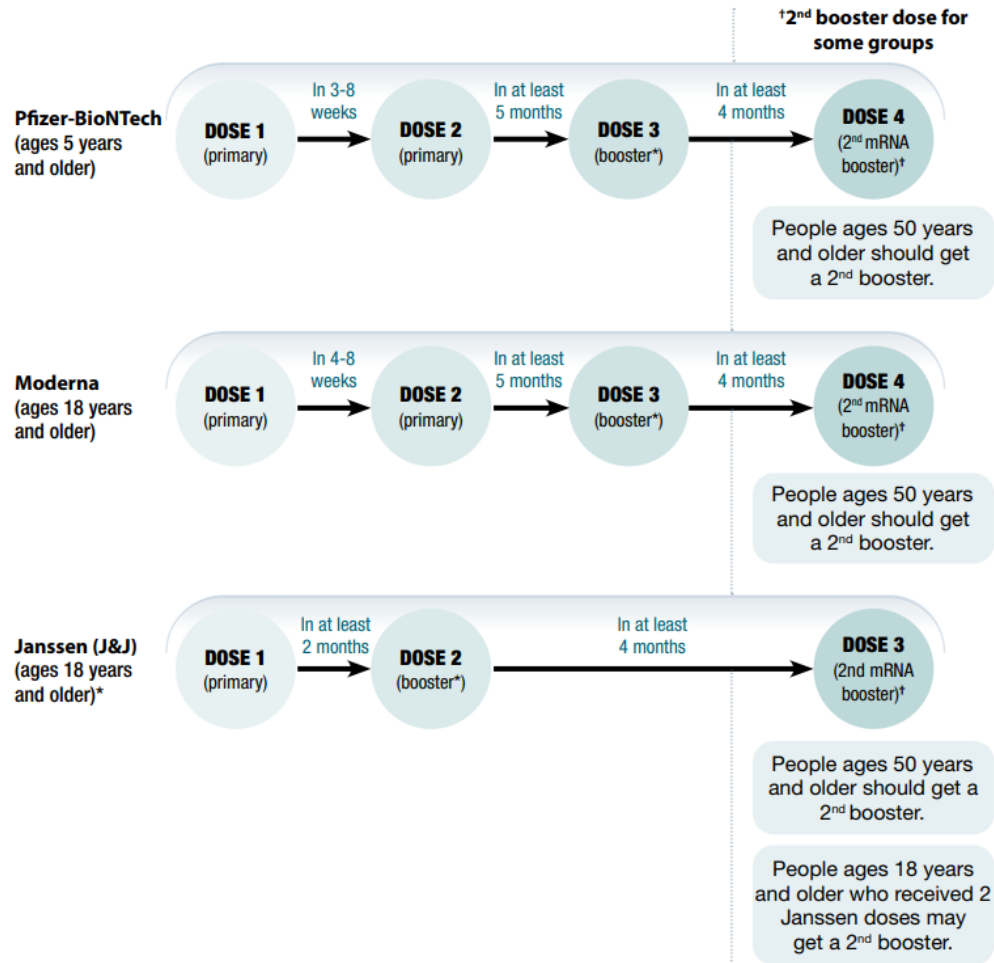
People are considered **up to date** after receiving all recommended doses of vaccine they are currently **eligible** for.

- You are also considered up to date if:
 - You have completed your primary series - but are not yet eligible for a booster
 - You have received 1 booster but are not recommended to get a 2nd booster
 - You have received 1 booster but are not yet eligible for a 2nd booster
 - [Stay Up to Date with Your COVID-19 Vaccines | CDC](#)

Booster Dose Schedules

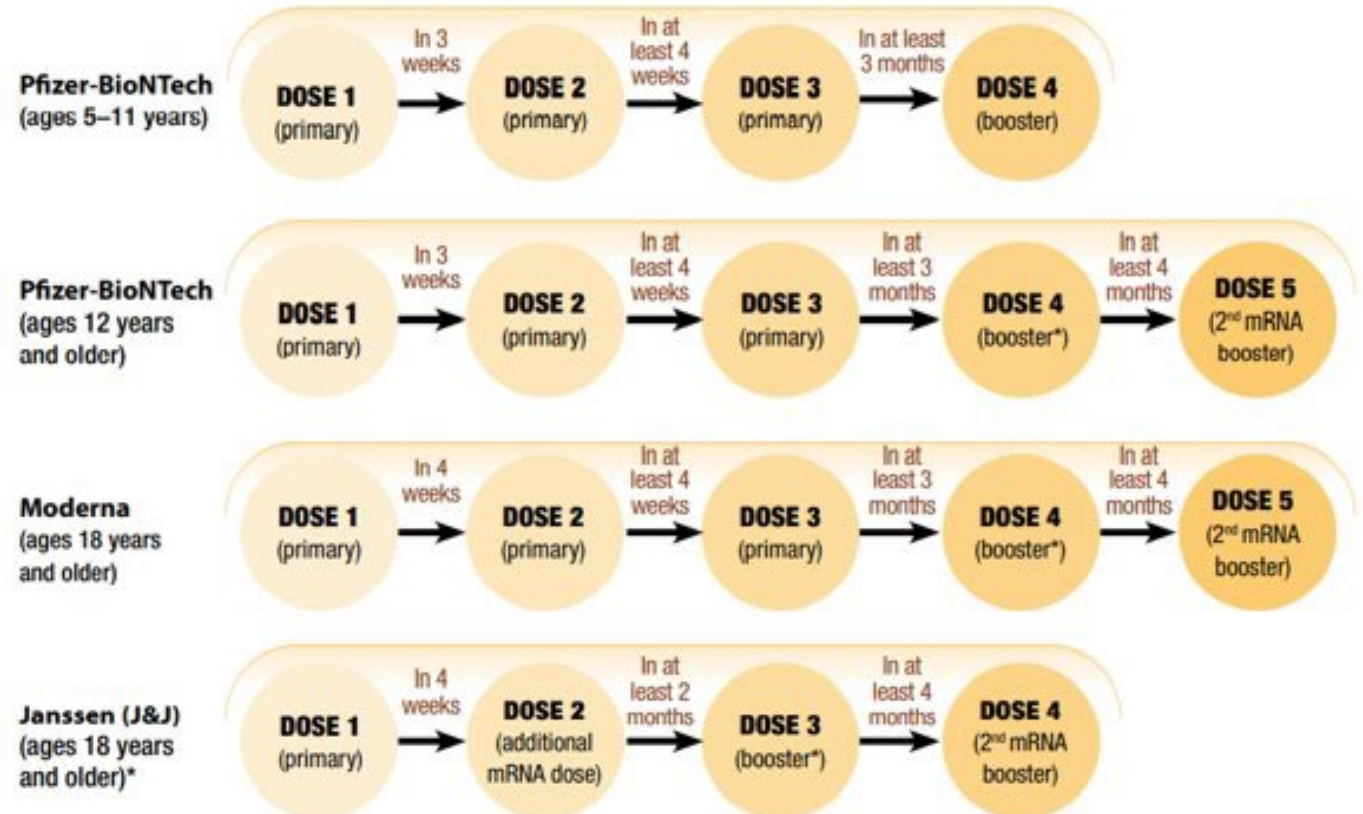
COVID-19 Vaccination Schedule for Most People

Number and intervals of COVID-19 vaccine doses



COVID-19 Vaccination Schedule for People Who Are Moderately or Severely Immunocompromised

Number and intervals of COVID-19 vaccine doses



CT Nursing Home COVID-19 Webpage

- *The Nursing Home Report will now be published **weekly** on our DPH Open Data Portal, [COVID-19 data resources | Connecticut Data](#)



- *If you have any questions or concerns, you may click the "Contact Us" link at the bottom of the page

Monkeypox

- * A rare disease that is caused by infection with monkeypox virus
 - * Monkeypox virus belongs to the *Orthopoxvirus* genus in the family *Poxviridae*
- * Cases do not occur naturally in the U.S and are rare
 - * **BUT** cases associated with international travel and importing of animals have occurred
- * The illness begins with fever, headache, muscle aches, backache, swollen lymph nodes, chills, exhaustion, followed by a rash, often beginning on the face then spreading to other parts of the body
- * Illness typically lasts for 2–4 weeks
- * CDC and Massachusetts Department of Public Health are investigating a situation in which a U.S. resident tested positive for monkeypox on May 18 after returning to the U.S. from Canada

Resources:

- [Air | Appendix | Environmental Guidelines | Guidelines Library | Infection Control | CDC](#)
- [ACH-to-PAC-transfer-guidance-attachment-corrected-version.pdf](#)
- [COVID-19 Infection Prevention and Control Recommendation for Nursing Homes](#)
 - [New Infection in Healthcare Personnel or Resident](#)
 - [Testing](#)
 - [Manage Residents with Close Contacts](#)
- [Interim Infection Prevention and Control Recommendations for Healthcare Personnel During COVID-19 Pandemic](#)
- [COVID-19 Data Tracker](#)
- [CMS QSO-20-38](#)
- [Plan Info \(mutualaidplan.org\)](#)
- <https://www.train.org/connecticut/admin/course/1099050/>
- [Statewide Program for Infection Control & Epidemiology - Education to prevent and control healthcare associated infections across the healthcare spectrum \(unc.edu\)](#)

Questions????

Thank you for all you do!

Next Meeting:

June 22, 2022

2pm

NOBODY PANIC!
I GOT THIS
I'M A



**Infection Control
Nurse**