



MD Community of Practice for Supporting Families Webinar Series

Webinar 3 – May 27, 2020

Transition



Hosted by the Developmental Disabilities Administration

Facilitated by Mary Anne Kane-Breschi

Director of Family Supports

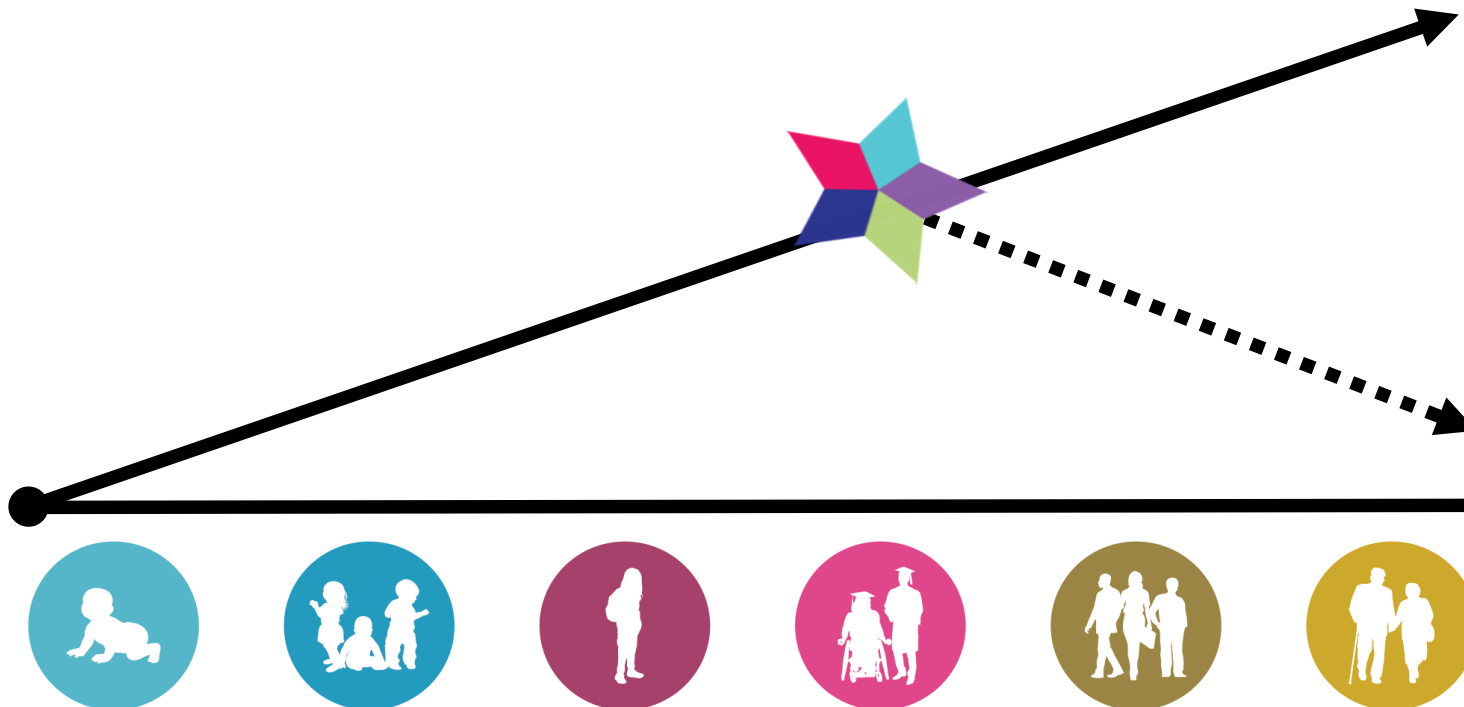


CHARTING the LifeCourse





The Trajectory & Life Stages



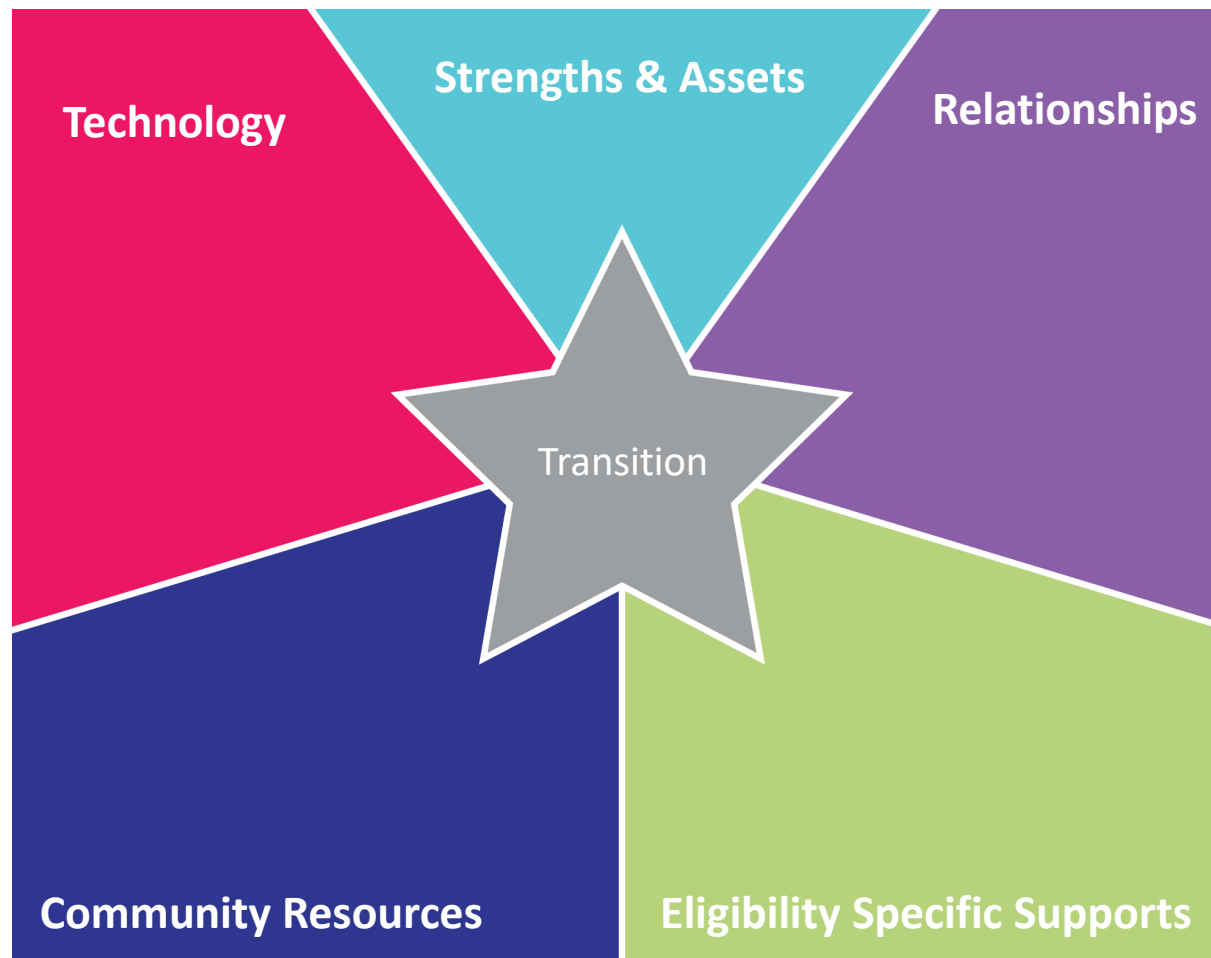
What I want...

“Good Life”

What I don't want...



The Integrated Support Star





Kathleen Walker, DDA

*Acting Statewide Career and
Employment Services Coordinator*



DDA Application Process

- Application – Includes information about age, disability or disabilities, Medical Assistance, etc.
- Supporting Documentation – Relevant professional assessments. Important to have the most recent psychological assessment with adaptive skills testing
- Review Process – Reviewed through the local Regional Office

Application available online at:

<https://dda.health.Maryland.gov/Pages/Apply%20for%20Services.aspx>



DDA Regional Offices

Regional Office	Counties Served	Phone
Central Nicholas Burton, Director	Baltimore City, Anne Arundel, Baltimore, Harford and Howard Counties	410.234.8200 TDD: 1.877.874.2494
Eastern Kim Gscheidel, Director	Caroline, Cecil, Dorchester, Kent, Queen Anne's, Somerset, Talbot, Wicomico, and Worcester Counties	410.572.5920 TDD: 1.800.735.2258
Southern Onesta Duke, Acting Director	Calvert, Charles, Montgomery, Prince George's and St. Mary's Counties	301.362.5100 TDD: 1.888.207.2479
Western Cathy Marshall, Director	Allegany, Carroll, Frederick, Garrett and Washington Counties	1.301.791.4670 TDD: 1.888.791.0193

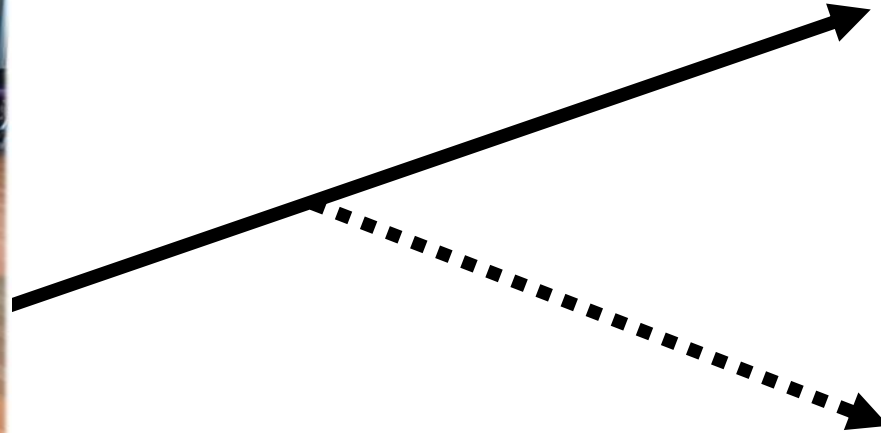


Regional Transition Youth Leads & Eligibility Coordinators

Regional Office	Transition Youth Lead	Eligibility Coordinators
Central Maryland Regional Office (CMRO)	Beryl Parker beryl.parker@maryland.gov	Kevin Williams kevin.williams3@maryland.gov
Eastern Shore Regional Office (ESRO)	Daniel Sabo daniel.sabo@maryland.gov	Daniel Sabo daniel.sabo@maryland.gov
Southern Maryland Regional Office (SMRO)	Nicole Sheppard nicole.sheppard@maryland.gov	Kendall Cazer kendall.cazer@maryland.gov
Western Maryland Regional Office (WMRO)	Brenda Sperow brenda.sperow@maryland.gov	Grace Mac Donnell grace.macdonnell@maryland.gov



Maggie's "Good Life"



What I want...

Connected, spend time w/ friends & family. Good staff, know my neighbors, hang out in my community, continue to communicate and learn, good health spend time outside - farm, walks, swim, listen to books on tape, have money, date, compete, train, volunteer, ***have a job I like (adaptive tools) that is purposeful***, live in a home that feels like mine with a back/front porch, opportunities to do new things, and make new friends, have freedom, make choices about my life.

What I don't want...

Isolated, without a voice, without relationships – family & friends, without opportunity, without purpose, without choice, without support





Maggie's Vision for Employment



What I want...

Current Iteration – Planting and growing an organic garden and selling produce at the local farmers market.
Public speaking – *assist Athletes*
Serving Athletes in their presentations to attract new athletes, wingmen and raise money.

What I don't want...

Isolated, without a voice, without relationships, without opportunity, without purpose, without choice, without support





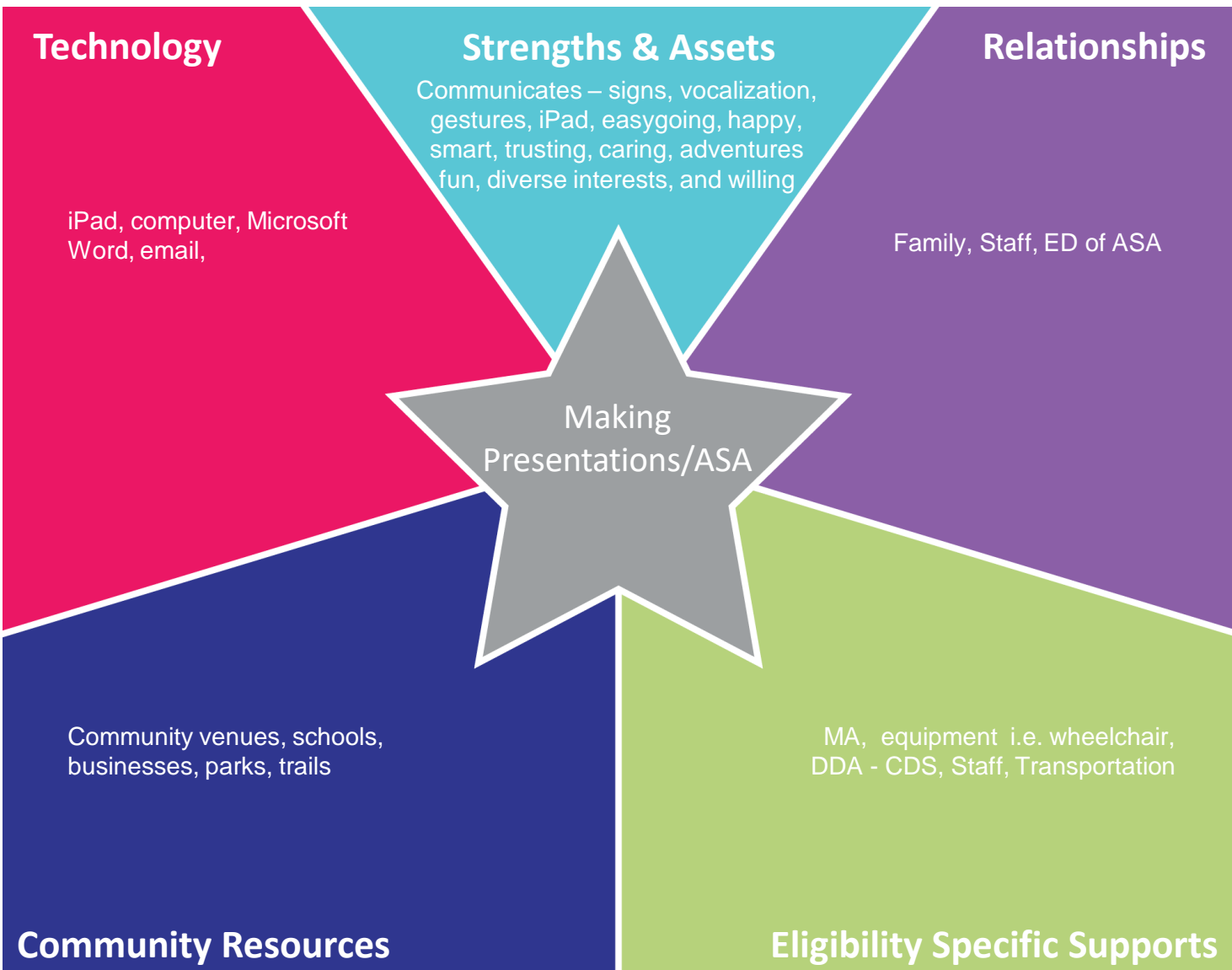
Maggie's Challenges / ASA

Communication

- Difficult to communicate in “real-time” spontaneously and provide authentic responses

Staff

- Who will support her in getting to the event (transportation) and throughout





Maggie's “Good Life”





Questions?

Webinar – Chat /Question Box

Services & Supports – Contact DDA Local Regional Office

Appendix K – dda.toolkitinfo@Maryland.gov



Additional Resources for Transitioning Youth

Technology

MD Technology Assistance Program

<http://mdod.maryland.gov/mdtap/Pages/MDTAP-Home.aspx>

Connect Using

- ZOOM Call/Web Conferencing
- Google Hangouts
- Messenger
- Portal
- Facebook

APSE Remote Supports -

<https://apse.org/wp-content/uploads/2020/04/Remote-Supports-FAQ.pdf>

Griffin Hammis Associates Resources on Transition, Technology, and Customized Employment

<https://www.griffinhammis.com/resources/past-webinars/>

Community Based

Charting the LifeCourse (CtLC) Learning Tools

<https://www.lifecoursetools.com/learning-materials/>

MD Public Libraries (check out online learning through local libraries)

- Online Library

Contact Local Businesses through your Local Chamber of Commerce

- https://mdchamber.org/resources_trashed/maryland-chamber-federation-2/

MDOD Job Seeker Fact Sheet Library

- <http://mdod.maryland.gov/employment/Pages/jsfactsheets.aspx>

Maryland ABLE Accounts

<https://mdtransitions.org/maryland-able-accounts/>

MD ONESTOP <https://onestop.md.gov/>

Think College Family Resources

<https://thinkcollege.net/family-resources>

Eligibility Specific

- **MD Developmental Disabilities Administration (DDA)**
<https://dda.health.maryland.gov/Pages/TY.aspx>
- **Appendix K**
https://dda.health.maryland.gov/Pages/DDA_Appendix_K.aspx
- **MD Division of Rehabilitation Services (DORS)**
dors.Maryland.gov
- **MD Department of Disabilities**
<http://mdod.maryland.gov/>
- **Social Security Administration**
<https://www.ssa.gov/>
- **National Collaborative on Workforce + Disability** <http://www.ncwd-youth.info/>
- **School to Work**
<https://dda.health.maryland.gov/Pages/Developments/2015/School%20to%20Work1.pdf>
- **Parent's Place Maryland**
https://www.ppmmd.org/resource_category/transition
- **Ticket to Work** <https://www.ticket2workmd.org/>
- **MD Benefits Counseling**
<https://www.mdbenefitscounseling.org/>



Thank You for Joining Us!

We Hope You Join Us on **June 10th**
for Our Next Webinar:
Q&A with DDA