

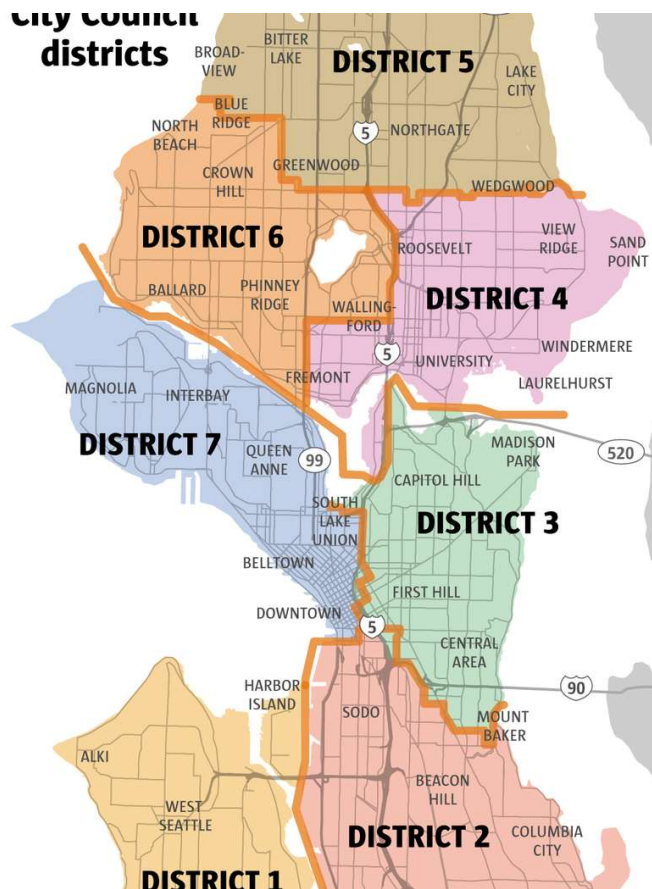


Seattle Redistricting Info Session



COMMUNITIES CONNECTED

Learn about the
REDISTRICTING
process and
how it impacts
YOU.



Seattle: Seven Districts and Nine Councilmembers

[Neighborhoods & Council Districts - Neighborhoods | seattle.gov](https://seattle.gov/neighborhoods/council-districts)

The City of Seattle is divided into 7 Council Districts with *the *same number of people each*

There are 9 council members: 7 of them represent one district and 2 of them represent the entire City.

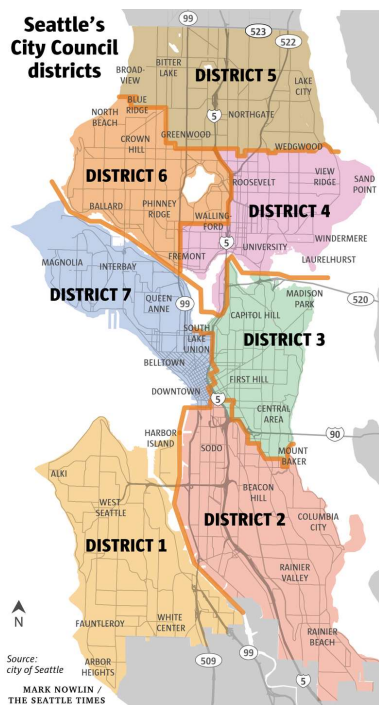


In 2023

In January , Seattle must have new districts lines

In November, the seven City council seats will be vacant, and voters must decide who will represent them.

What is Redistricting?



Changing the boundaries of council districts to reflect the change in population

By City law , this happens every 10 years after each the decennial Census

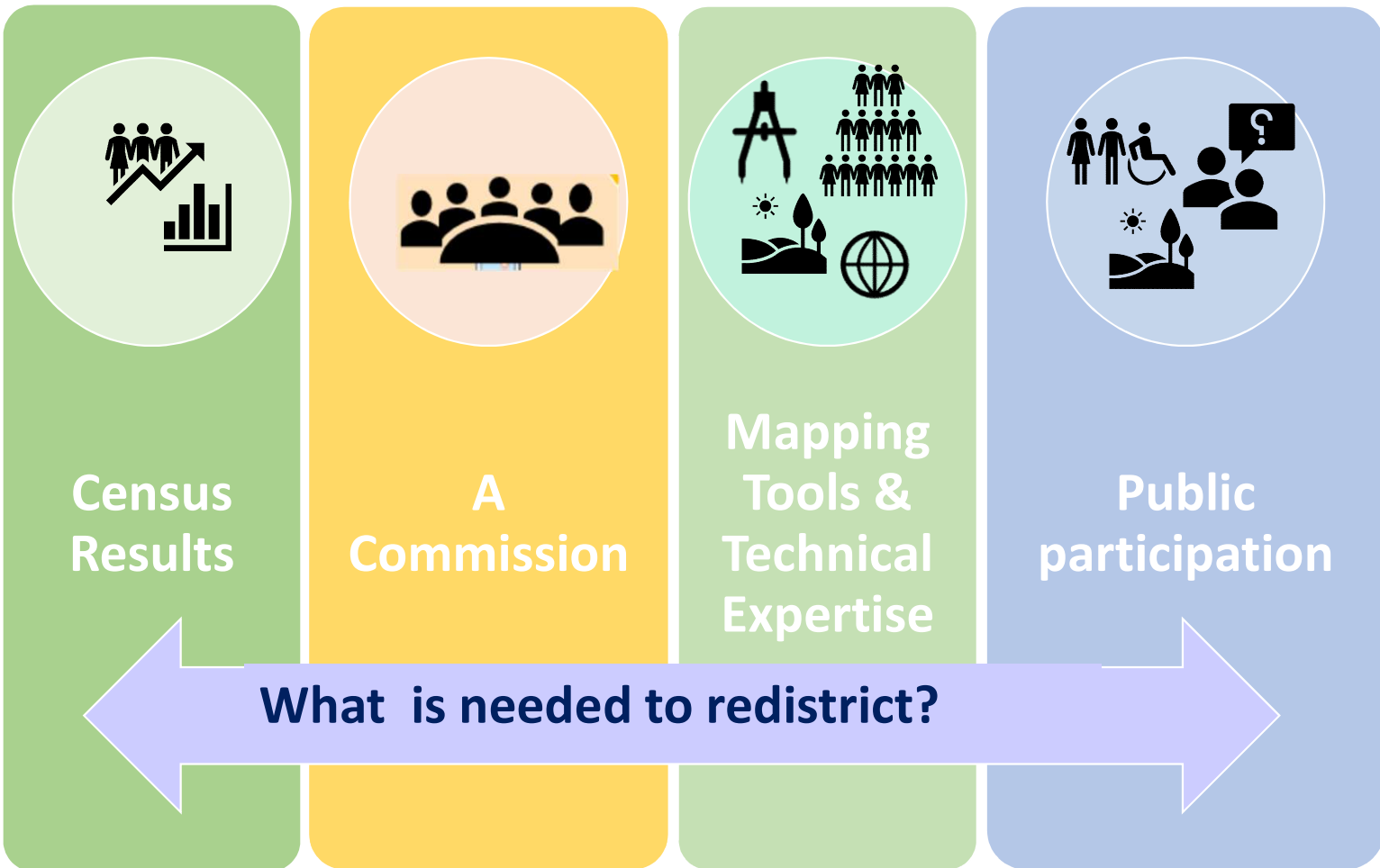
2022 is the first time that Seattle has a commission after Seattle Voters decided on new district system in 2013 and was enacted in 2017.



In other words, redistricting is :



- The way the city changes the districts and this process determine who represents you in the City Council



Redistricting Commission

<http://www.seattle.gov/redistricting/who-we-are>



Commissioner Eliseo Juárez (He/Him) is the Director of Equity and Environmental Justice for the Washington Department of Natural Resources.



Commissioner Greg Nickels (He/Him) has served as the 51st Seattle Mayor.



Commissioner Patience Malaba (She/Her) is the Director of Government Relations and Policy at the Housing Development Consortium (HDC) of Seattle-King County..



Commissioner Neelima Shah (She/Her) Currently, she is a Senior Program Officer at the Seattle-based Bullitt Foundation.



Commissioner Rory O'Sullivan (He/Him) currently serves as an Administrative Law Judge with the Office of Administrative Hearings.

Principles Guiding the Redistricting Commission's Work

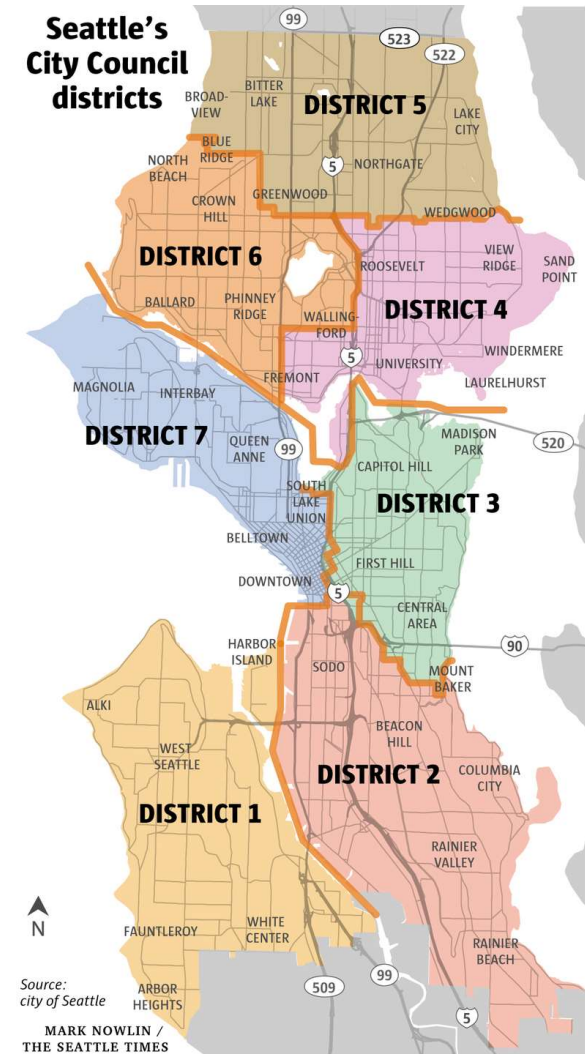
- Transparency
- Open internal and public communication
- Use Principals of Racial Equity and Representation to guide all pieces of the work
- Demystify technical expertise and make information as accessible as possible to the public
- Commit to language access throughout the process
- Make every effort to genuinely engage the public in the process
- Gather public input and report back
- Start with diverse and open input and move towards narrowed options
- Move towards consensus
- Shared leadership
- Recognize implicit biases and
- Hold each other accountable



Rules to Draw New Districts

New districts must:

- Be compact and contiguous that are not gerrymandered*
- Have approximately the same population
- Follow existing district boundaries
- Recognize waterways and geographic boundaries
- Recognize communities and neighborhoods
- In drawing the plan, neither the Commission nor the GIS consultant can consider the residence of any person.



* *Gerrymandering* is the manipulation of electoral district boundaries for political gain.

I♥ Census Data



2020 Census Seattle Results

Population count: 737,015

• Population under 18 years of age: 106,841

• Population age 18 and over: 630,174

• Population of color: 298,847

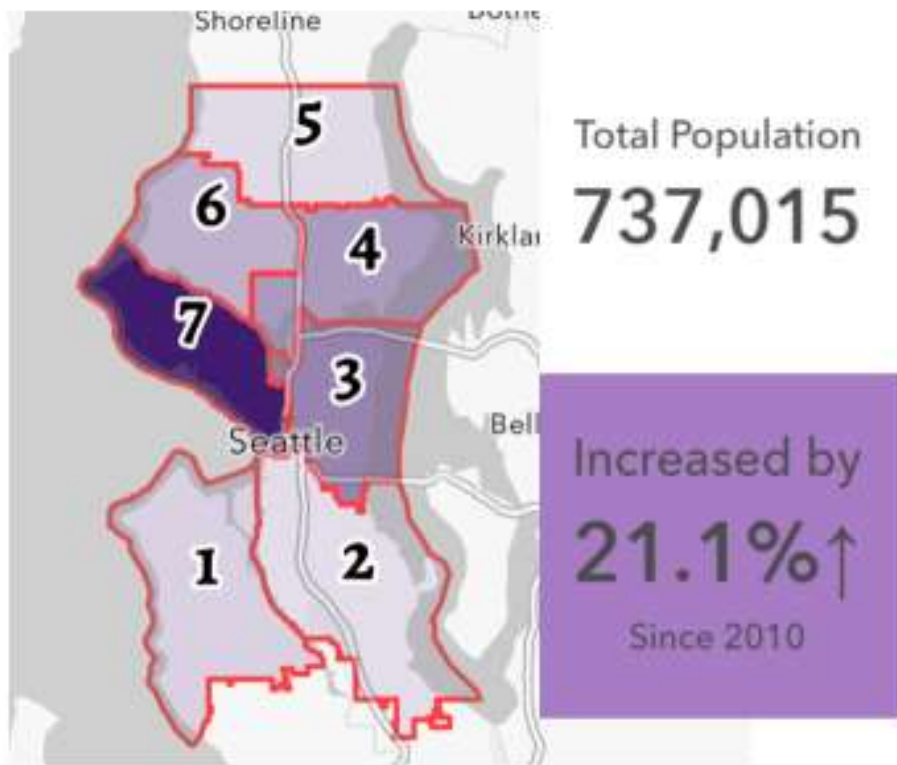
• Population in households: 707,097

• Number of households: 345,627

• Average household size: 2.05

• Population in group quarters: 29,918

Seattle's Current Districts Growth



2020 Population by District
Size range should be 104.4K-106.2K



The goal

Number of final population per district : **105,288***

Districts 1, 2, 5 and 6 **must expand**

Districts 3, 4 and 7 **must contract**



District	Current people	105,288	Goal
1	99,698	-5,590	Add
2	99,163	-6,125	Add
3	106,845	-1,557	move
4	102,753	+2,535	move
5	99,102	+6,186	add
6	102,753	+2,535	add
7	123,351	-18,063	move

Public Input When



Jan- Nov

Commissioner's
work

Feb-April

Scheduled
listening sessions
and mapping tool
training sessions

May-July

Scheduled 7
public forums per
District

**Aug. Sept –
Oct**

Final Public
meeting

Public Input

How <http://www.seattle.gov/redistricting/how-to-participate>

Attend a meeting
Commissioner's
meeting (link)

**Make a Public
Comment**

- Provide Public comment
in meetings (Link)

Answer a Survey

- Answer this short survey
(link)



Subscribe

- Subscribe to receive
Redistricting updates

Email

- Send your comments via
email (email)

Call

- Leave a voicemail (phone number)

**Request
Interpretation**

- Request an Interpreter (link)

Review

- Review past meetings-
Minutes, Records and
Resources (link)

Draw

- Draw your own map
(link)

**Learn at training
sessions**

- April 8- 12- 1pm
Mapping training



How to Participate | seattle.gov



The screenshot shows the Seattle.gov website with a dark blue header. The header includes the Seattle logo, a language dropdown set to 'English', a search bar, and links for 'Pay or Apply' and 'Menu'. The main content area is titled 'How to Participate in the Redistricting Process' and features six white boxes with blue borders. The first row contains 'Attend a public meeting', 'Submit public comment', and 'Step-by-step public comment guide'. The second row contains 'Redistricting Training Session Interest Form', 'Redistricting Listening Session Interest Form', and 'Draw your own map'. To the right of these boxes is a map of Seattle with colored districts. Below this section is a dark grey banner titled 'Request Interpretation or Accessibility Services', which includes an illustration of diverse people and three white boxes for 'Interpretation Request forms', 'Accessibility Request Form', and 'Need additional help?'.

Seattle | English ▾

Search Pay or Apply Menu

How to Participate in the Redistricting Process

Attend a public meeting
Sign up to attend an upcoming meeting.


Submit public comment
Review the map(s) above and submit your public comment in this survey.

Step-by-step public comment guide
Click here for a step-by-step guide for submitting public comment during a Seattle Redistricting Commission meeting.


Redistricting Training Session Interest Form
Sign up for a training session to learn about the redistricting process and how you can participate.

Redistricting Listening Session Interest Form
Sign up for a redistricting listening session.

Draw your own map
Coming soon!



Request Interpretation or Accessibility Services



Interpretation Request forms
Email Redistricting staff to request translation or interpretation of materials or live events.

Accessibility Request Form
Please fill out this form for any American Sign Language or other accessibility requests.

Need additional help?
If your language is not here, email Logan.Drummond@seattle.gov to make a request.

What does the Commission want and need to hear from you ?

1

Do current council lines represent your community?

2

What is unique about your community and where is it in the map?

3

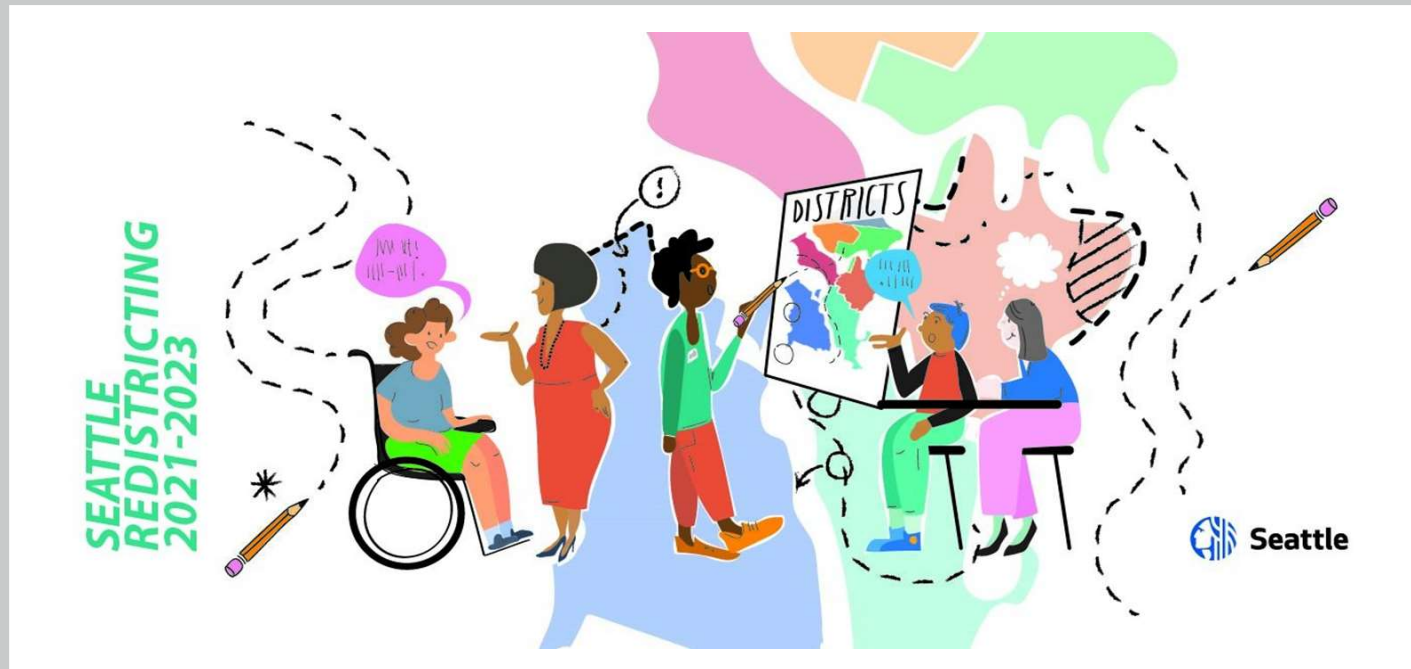
How could the draft maps impact your community and neighborhood?

For more
information and
in language
support

Elsa. [Batres-
Boni@seattle.gov](mailto:Batres-Boni@seattle.gov)

Redistricting
Community Liaisons

Name	Contact info	Community	Language
Efren Pascua	apopascua@yahoo.com	Fiipino	Tagalog/ English
Iris Avendano	iriscviveros@gmail.com	Latinx	Spanish
Amanda Richer	richer.amanda@gmail.com	Unhoused Community	Response
Mary S	lakecitysqueakywheelers@hotmail.com		English
Abdi Rahman	globalreachconsultantllc@gmail.com	Somali	Somali
Sabreen Abdullah	sabreenabdullah1998@gmail.com	Cham	Cham/ English
Neguse Naizghi	nnaizghi@gmail.com	Eritrean	Tigrinya
	Logan.Drummond@seattle.gov	Chinese	Chinese
	Logan.Drummond@seattle.gov	Vietnamese	Vietmanese
LKL Katera Shannon	klorganizer@yahoo.com	Black/ African American	Enlgish
	Logan.Drummond@seattle.gov	Other Communities	other Languages



The map conversation

Spectrum maps to start the conversation

Computer
Generated

Computer
some
criteria

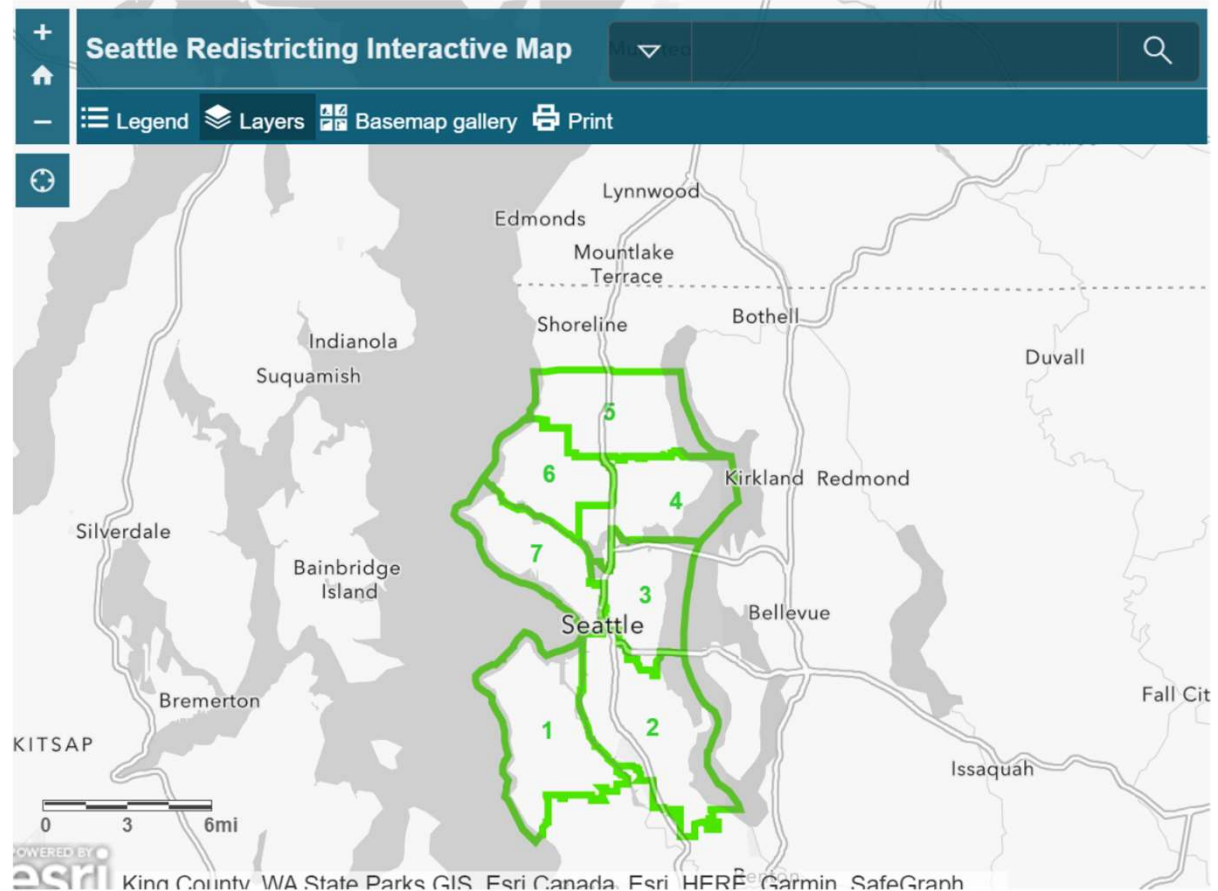
Human
drafted

Human
drafted



[Seattle Redistricting Interactive Map \(arcgis.com\)](https://arcgis.com)

- You can see the details per district
- You can see details per neighborhood
- You can see proposed maps



What are Communities of Interest

Definition 1

These are groups of individuals who are likely to have similar legislative concerns, and who might therefore benefit from cohesive representation in the legislature.

* Brennan Justice Center Definition

Communities of interest

A community of interest is a neighborhood, community, or group of people who have common policy concerns and would benefit from being maintained in a single district.

Another way of understanding a community of interest is that it is simply a way for a community to tell its own story about what neighbors share in common, and what makes it unique when compared to surrounding communities.

They are defined by the local community members.

* <https://redistricting.ils.edu/wp-content/uploads/Basics-English6.pdf>



Your thoughts and questions

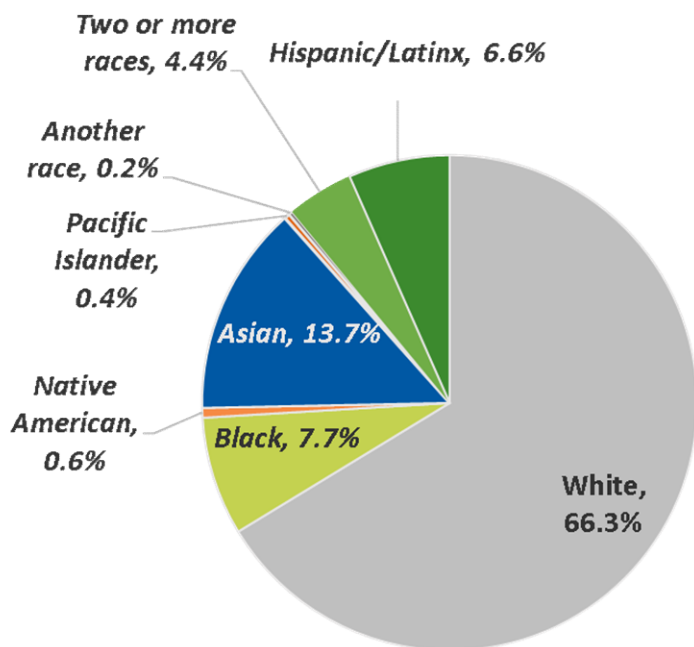
Elsa.batres-boni@seattle.gov

Additional slides

Seattle's Racial and Ethnic Composition

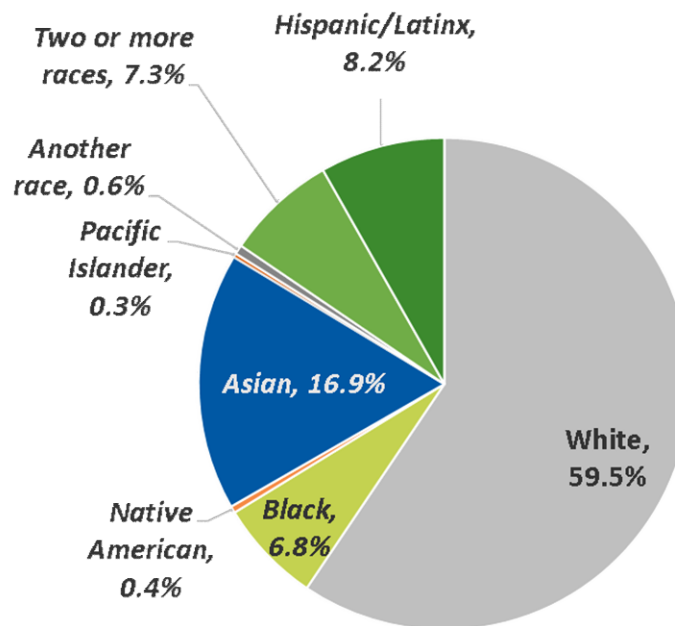
People of Color
33.7%

2010



People of Color
40.5%

2020



Seattle's Age and Racial/Ethnic Composition

