

MBQIP Patient Safety & Outpatient Measures - 1Q 2017

MT REPORTING RATES

1Q 2017 PERCENT OF REPORTING	PEER 1	PEER 2	PEER 3	PEER 4	PEER 5	MT	
PATIENT SAFETY/INPATIENT							
PATIENT SAFETY							
IMM-2: Inpatient Influenza Immunization Rate (Q4 Q1)	75%	100%	73%	40%	57%	69%	
OP-27 Healthcare Worker Influenza Imm. (yearly Q1)	63%	100%	53%	50%	43%	60%	
OUTPATIENT							
AMI							
OP-1 Median Time to Fibrinolysis in the ED							
OP-2 Rate: Fibrinolytic Therapy w/I 30 min. ED arrival							
OP-3 Median time to transfer for Acute CI							
CHEST PAIN							
OP-4 Rate: Aspirin at Arrival in ED	88%	100%	67%	40%	57%	69%	
OP-5 Median Time to ECG in ED							
ED THROUGHPUT							
OP-18 Median Time from ED Arrival to Departure	75%	88%	67%	40%	57%	65%	
OP-20 Door to diagnostic eval by a qualified med prof							
OP-22 Patient left without being seen (yearly Q4)							
PAIN MANAGEMENT							
OP-21 Median time to pain management for long bone fx	88%	100%	60%	50%	57%	69%	
PATIENT ENGAGEMENT							
HCAHPS							
	88%	100%	100%	90%	43%	88%	
CARE TRANSITIONS							
ED TRANSFER COMMUNICATION							
	75%	100%	73%	90%	86%	83%	

**The 90th percentile is the level of performance needed to be in the top 10% of CAHs for a given measure (i.e. 10% of CAHs perform at or better than the 90th percentile.)

NA - Zero cases reported or case reported did not meet eligibility; counts for participation

NR No data reported

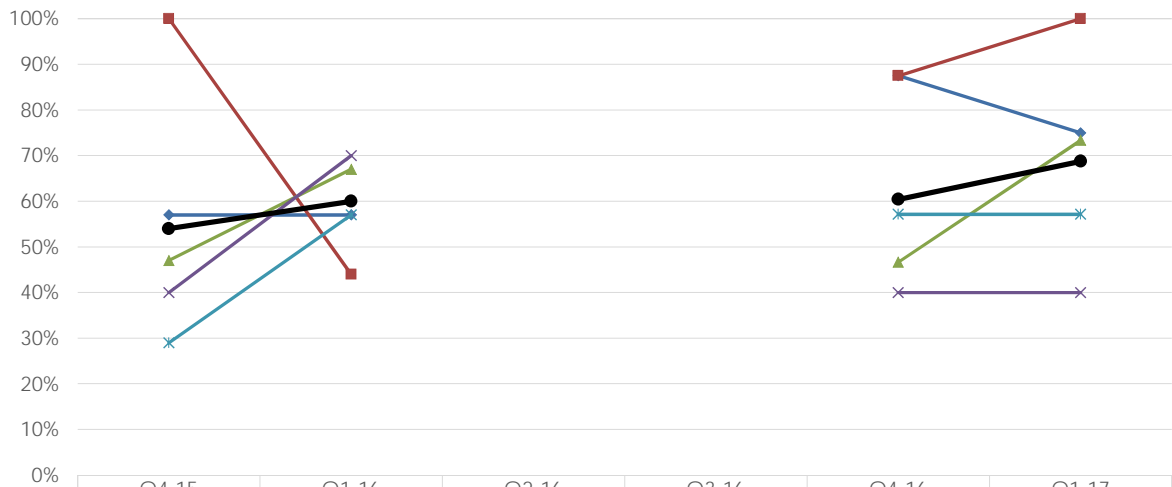
MBQIP Patient Safety & Outpatient Measures - 1Q 2017

MT REPORTING RATES

INPATIENT/PATIENT SAFETY

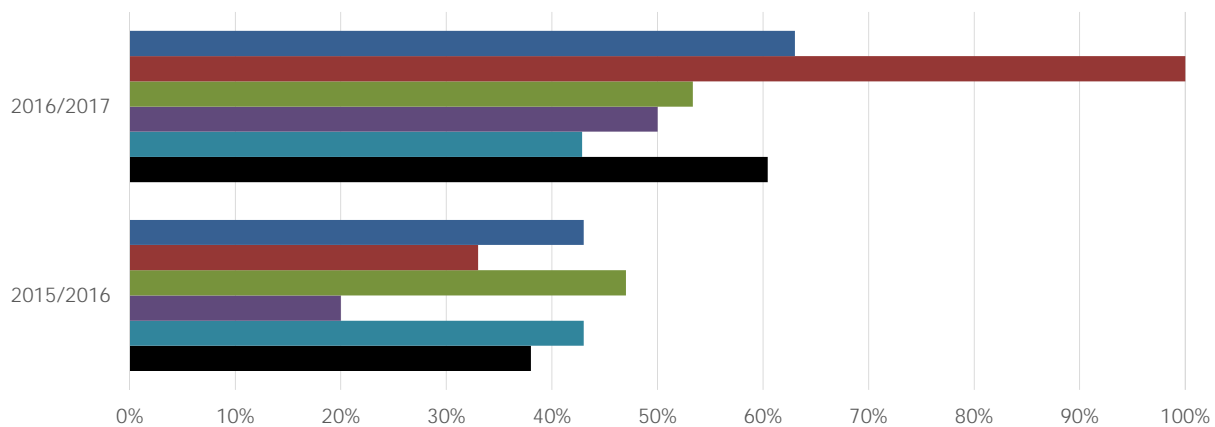
PATIENT SAFETY

Inpatient Influenza Immunization (IMM-2) Participation Rates % of 48 CAHs



	Q4-15	Q1-16	Q2-16	Q3-16	Q4-16	Q1-17
Peer Group 1	57%	57%			88%	75%
Peer Group 2	100%	44%			88%	100%
Peer Group 3	47%	67%			47%	73%
Peer Group 4	40%	70%			40%	40%
Peer Group 5	29%	57%			57%	57%
Montana	54%	60%			60%	69%

HCW Influenza Immunization (OP-27) Participation Rates % of 48 CAHs



	2015/2016	2016/2017
Peer Group 1	43%	63%
Peer Group 2	33%	100%
Peer Group 3	47%	53%
Peer Group 4	20%	50%
Peer Group 5	43%	43%
Montana	38%	60%

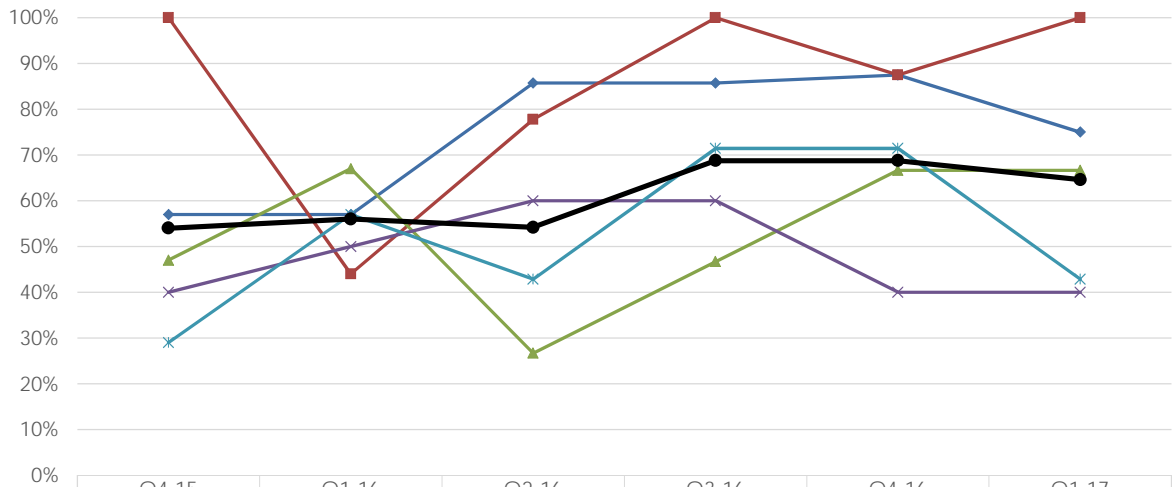
MBQIP Patient Safety & Outpatient Measures - 1Q 2017

MT REPORTING RATES

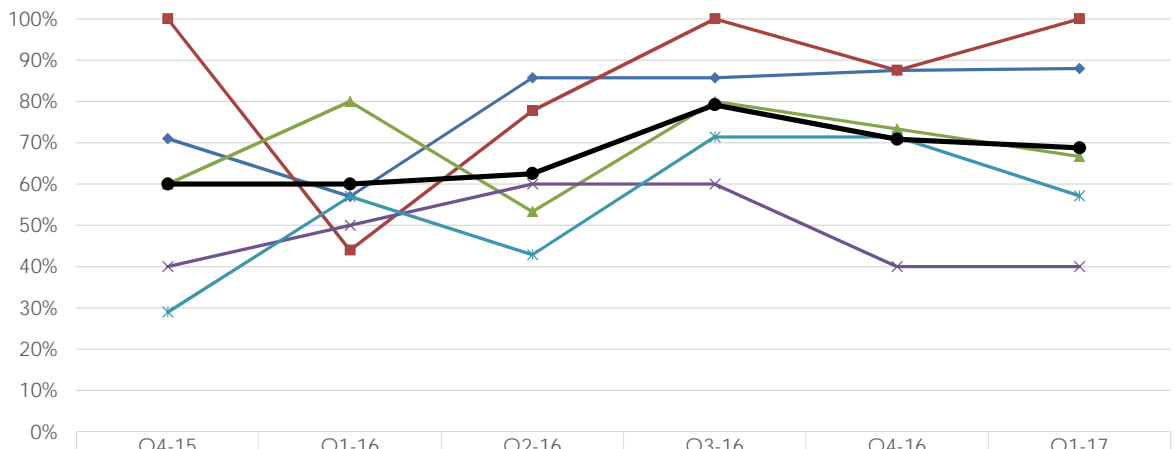
OUTPATIENT

AMI & CHEST PAIN

AMI (OP1-3) Participation Rates
% of 48 CAHS



Chest Pain (OP 4, 5) Participation Rates
% of 48 CAHS



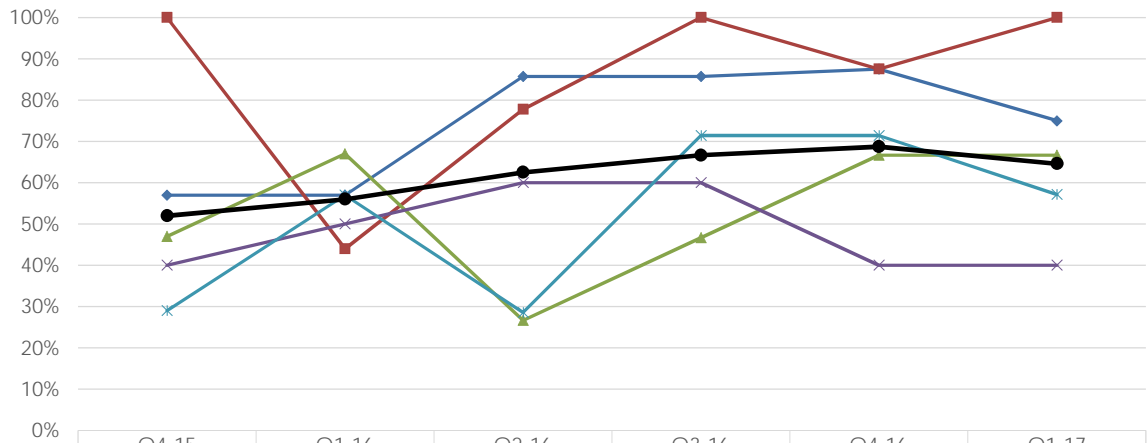
MBQIP Patient Safety & Outpatient Measures - 1Q 2017

MT REPORTING RATES

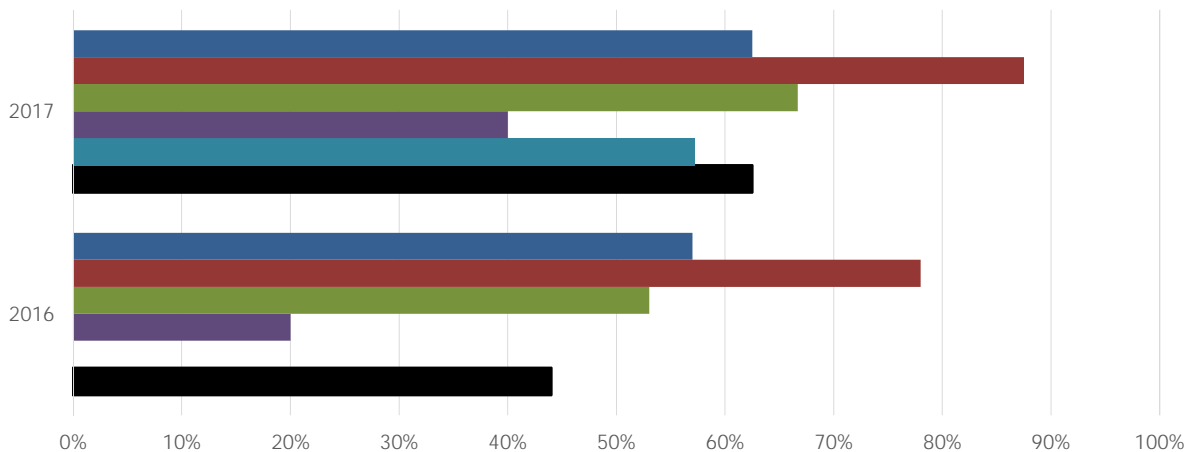
OUTPATIENT

ED THROUGHPUT

ED Throughput (OP 18, 20) Participation Rates
% of 48 CAHS



Patient Left w/o Being Seen (OP-22) Participation Rates
% of 48 CAHS



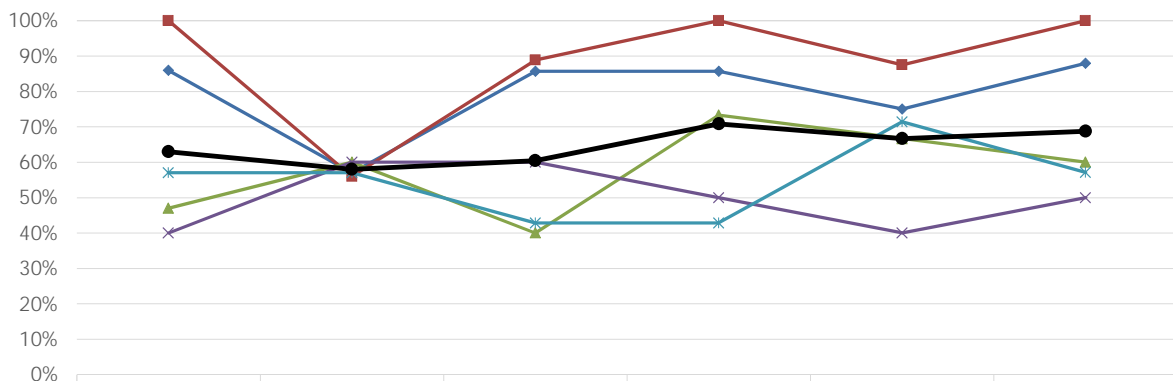
MBQIP Patient Safety & Outpatient Measures - 1Q 2017

MT REPORTING RATES

OUTPATIENT

PAIN MANAGEMENT

Pain Management for Long Bone Fracture (OP 21)
Participation Rates % of 48 CAHS

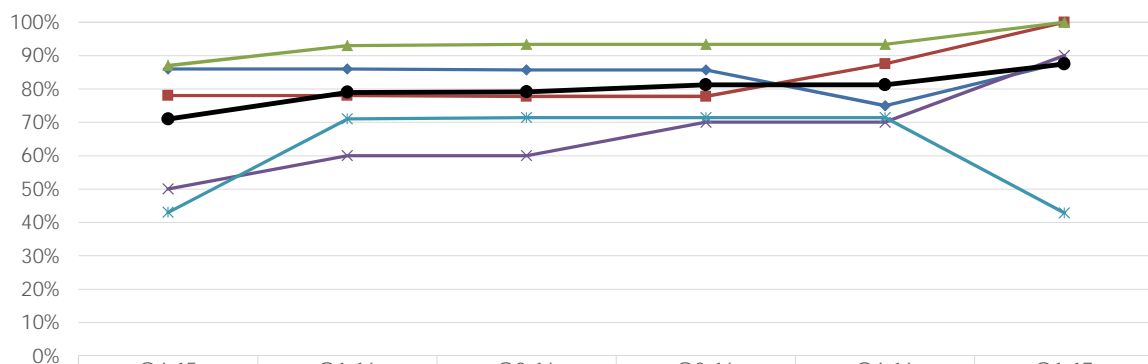


	Q4-15	Q1-16	Q2-16	Q3-16	Q4-16	Q1-17
Peer Group 1	86%	57%	86%	86%	75%	88%
Peer Group 2	100%	56%	89%	100%	88%	100%
Peer Group 3	47%	60%	40%	73%	67%	60%
Peer Group 4	40%	60%	60%	50%	40%	50%
Peer Group 5	57%	57%	43%	43%	71%	57%
Montana	63%	58%	60%	71%	67%	69%

PATIENT ENGAGEMENT

HCAHPS

HCAHPS Participation Rates
% of 48 CAHS



	Q4-15	Q1-16	Q2-16	Q3-16	Q4-16	Q1-17
Peer Group 1	86%	86%	86%	86%	75%	88%
Peer Group 2	78%	78%	78%	78%	88%	100%
Peer Group 3	87%	93%	93%	93%	93%	100%
Peer Group 4	50%	60%	60%	70%	70%	90%
Peer Group 5	43%	71%	71%	71%	71%	43%
Montana	71%	79%	79%	81%	81%	88%

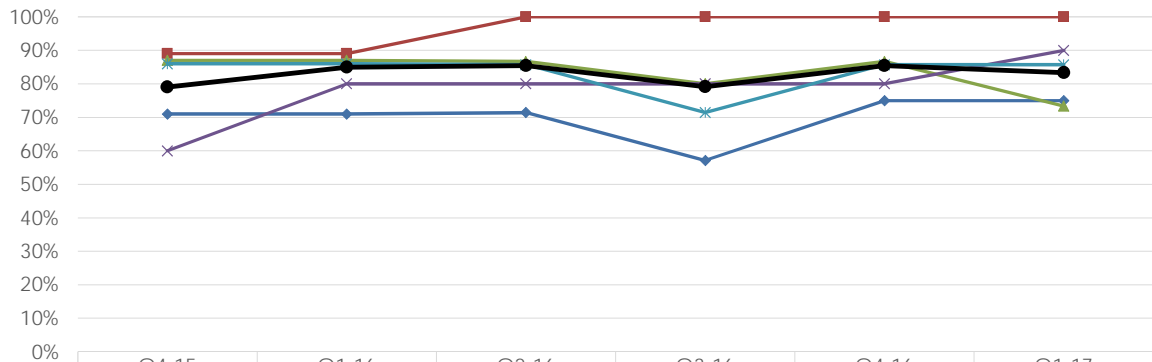
MBQIP Patient Safety & Outpatient Measures - 1Q 2017

MT REPORTING RATES

CARE TRANSITIONS

ED TRANSFER COMMUNICATIONS

ED Transfer Communications Participation Rates
% of 48 CAHS



	Q4-15	Q1-16	Q2-16	Q3-16	Q4-16	Q1-17
Peer Group 1	71%	71%	71%	57%	75%	75%
Peer Group 2	89%	89%	100%	100%	100%	100%
Peer Group 3	87%	87%	87%	80%	87%	73%
Peer Group 4	60%	80%	80%	80%	80%	90%
Peer Group 5	86%	86%	86%	71%	86%	86%
Montana	79%	85%	85%	79%	85%	83%