

North Royalton City Schools

IN-PERSON LEARNING PRESENTATION
October 8, 2020



Vision Statement During COVID-19

During the COVID-19 global pandemic, our educational community will first provide a safe and secure learning environment for all students while continuing to identify individual students needs and provide comprehensive support.

Belief Statements During COVID-19

- We believe in safely providing in-person instruction to best meet students' social, emotional, and academic needs.
- We believe in adapting our environment and delivery of instruction to meet student needs, when public health guidelines and community circumstances change.
- We believe on-going communication and collaboration with families allows us to provide high-quality social, emotional, academic and technological support.



Reopening Plan Changes

Effective October 26, 2020

LEVEL 4 PURPLE

- Full Remote Learning PK - 12

LEVEL 3 RED

- Remote Learning K - 12
- Preschool and special education units in person

LEVEL 2 ORANGE

- In Person Learning PK - 8
- Grades 9 - 12 Blended Learning Phase with the exception of special needs units

LEVEL 1 YELLOW

- In Person Learning PK - 12

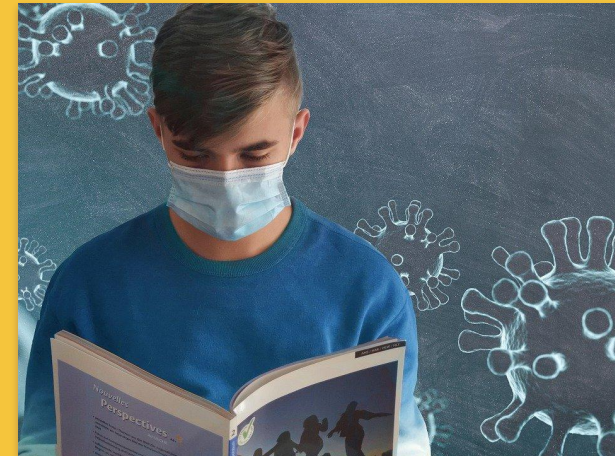


In-Person Learning

Grades K-4

5 Days of Instruction

- Students will follow the regular school schedule 9 a.m. - 3:30 p.m.
- Students will follow the adopted calendar.



In-Person Learning

Grades 5-8

5 Days of Instruction

- Students will follow the regular school schedule 8 a.m. - 3 p.m.
- Students will follow the adopted calendar.



Safety Protocols

- ❑ All students and staff will wear masks
- ❑ Social distancing at CDC recommended guideline of 3-6 feet
- ❑ Daily health assessments done at home prior to coming to school
- ❑ Frequent hand washing
- ❑ Signage
- ❑ Frequent cleaning and sanitizing of surfaces and touchpoints



In-Person Learning

Grades 9-12 Blended Learning

- Alternating Days, 5 days per week
- **Students with last name A-K attend in person**
 - Week One: Monday, Wednesday, Friday
 - Week Two: Tuesday, Thursday
 - Continues every other day
- **Students with last name L-Z attend in person**
 - Week One: Tuesday, Thursday
 - Week Two: Monday, Wednesday, Friday
 - Continues every other day
- When students do not attend in-person, they will log in to the classroom remotely via Zoom or Google Meet



Safety Protocols 9-12

- ❑ All students and staff will wear masks
- ❑ Social distancing at CDC recommended guidelines
- ❑ Daily health assessments done at home prior to coming to school
- ❑ Frequent hand washing
- ❑ Signage
- ❑ Frequent cleaning and sanitizing of surfaces and touchpoints



- Parents of students in grades K - 8 who wish their children be fully remote may remain in the At Home Remote Learning Plan
- Parents of students in grades K - 8 who wish to switch from the Traditional Learning Plan to the At Home Remote Learning plan may elect to do so.
 - Declaration form will be sent electronically on Monday, October 12 and must be completed by Wednesday, October 14 to allow for any staffing changes to be made.
- Students in grades 9 - 12 remain in their current plan




At Home Remote Learning Plan



**Because we will be in person
grades PK-8, and alternating
days of blended learning grades
9-12, there will be no need to
adjust the adopted 2020-21
school calendar.**





Information on our Opening
Plan and other COVID-19 related
information can be found on our
District Website
www.northroyaltonsd.org



QUESTIONS FROM BOARD OF EDUCATION MEMBERS?

