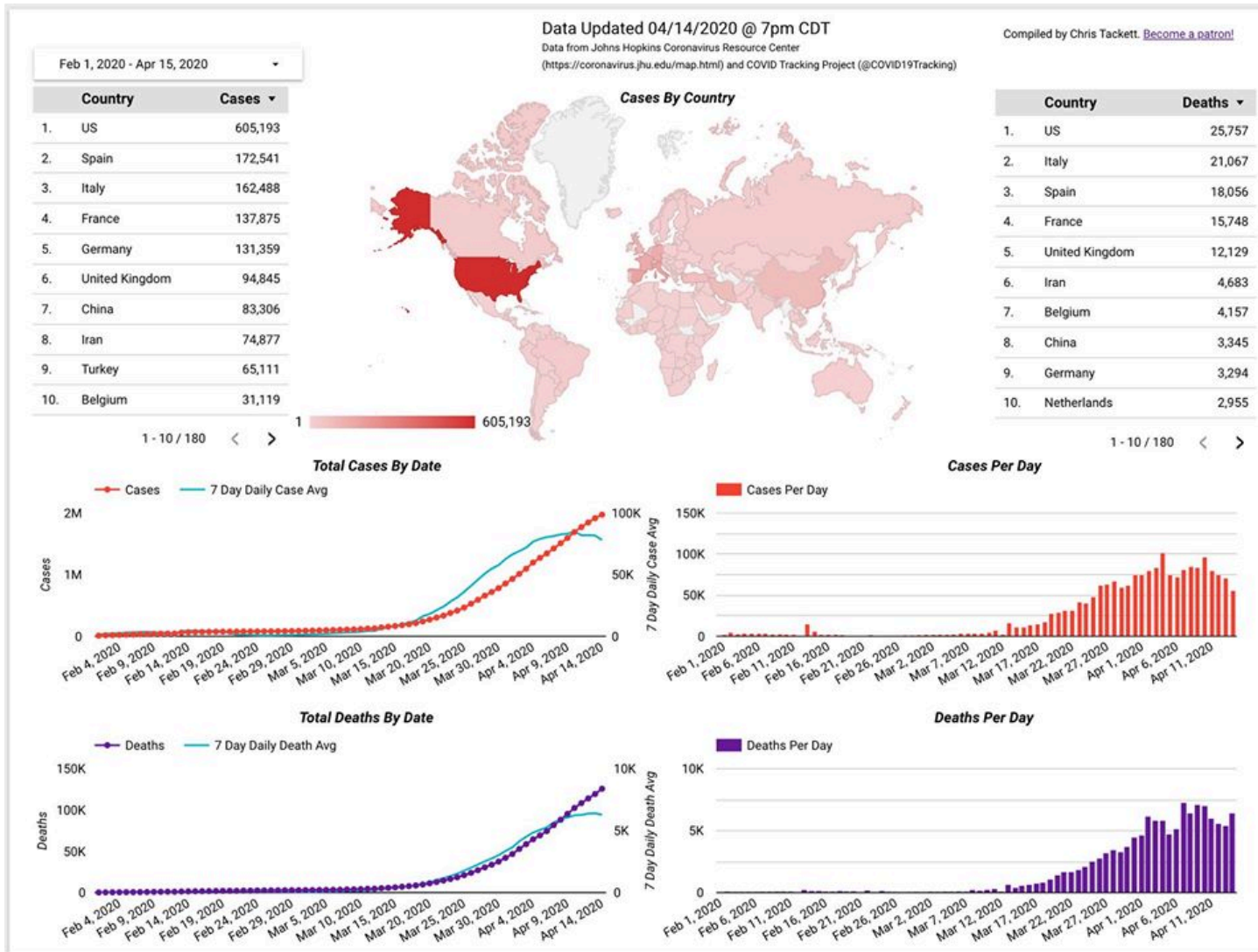


COVID-19 Trends as of April 14, 2020

Compiled by Chris Tackett



Cases in the World

- 1,973,497 cases (+56,374)
- 125,890 deaths (+6,424)

The daily case number is down slightly from 4/13, deaths saw a tick back up.

Countries per 1M

The US ranks

- 19th in Testing per 1M (down two spots from 4/13) - below Belgium and above of Finland
- 8th in Cases per 1M at 1,828, with a 20.3% positive rate (meaning 1 in 5 tested are positive), just below France and ahead of Portugal.
- 10th in Deaths per 1M at 77.82, with a 4.26% mortality rate, just below Ireland and ahead of Iran.

Country COVID-19 per 1M in Population

[Mobile Friendly](#)

Data Updated 04/14/2020 @ 7pm CDT

Compiled by Chris Tackett.

Data from Johns Hopkins Coronavirus Resource Center

[Become a patron!](#)

(<https://coronavirus.jhu.edu/map.html>) and COVID Tracking Project (@COVID19Tracking)

	Country	Population	Tests	Tests per 1M ▾	Cases	Cases per 1M	Positive...	Deaths	Deaths per 1M	Mortalit...
1.	Iceland	321,243	36,339	113,119.97	1,720	5,354.20	4.73%	8	24.9	0.47%
2.	United Arab Emirates	9,890,402	593,095	59,966.72	4,933	498.77	0.83%	28	2.83	0.57%
3.	Norway	5,421,241	124,279	22,924.46	6,623	1,221.68	5.33%	139	25.64	2.1%
4.	Switzerland	8,654,622	193,800	22,392.66	25,936	2,996.78	13.38%	1,174	135.65	4.53%
5.	Israel	8,655,535	168,075	19,418.21	12,046	1,391.71	7.17%	123	14.21	1.02%

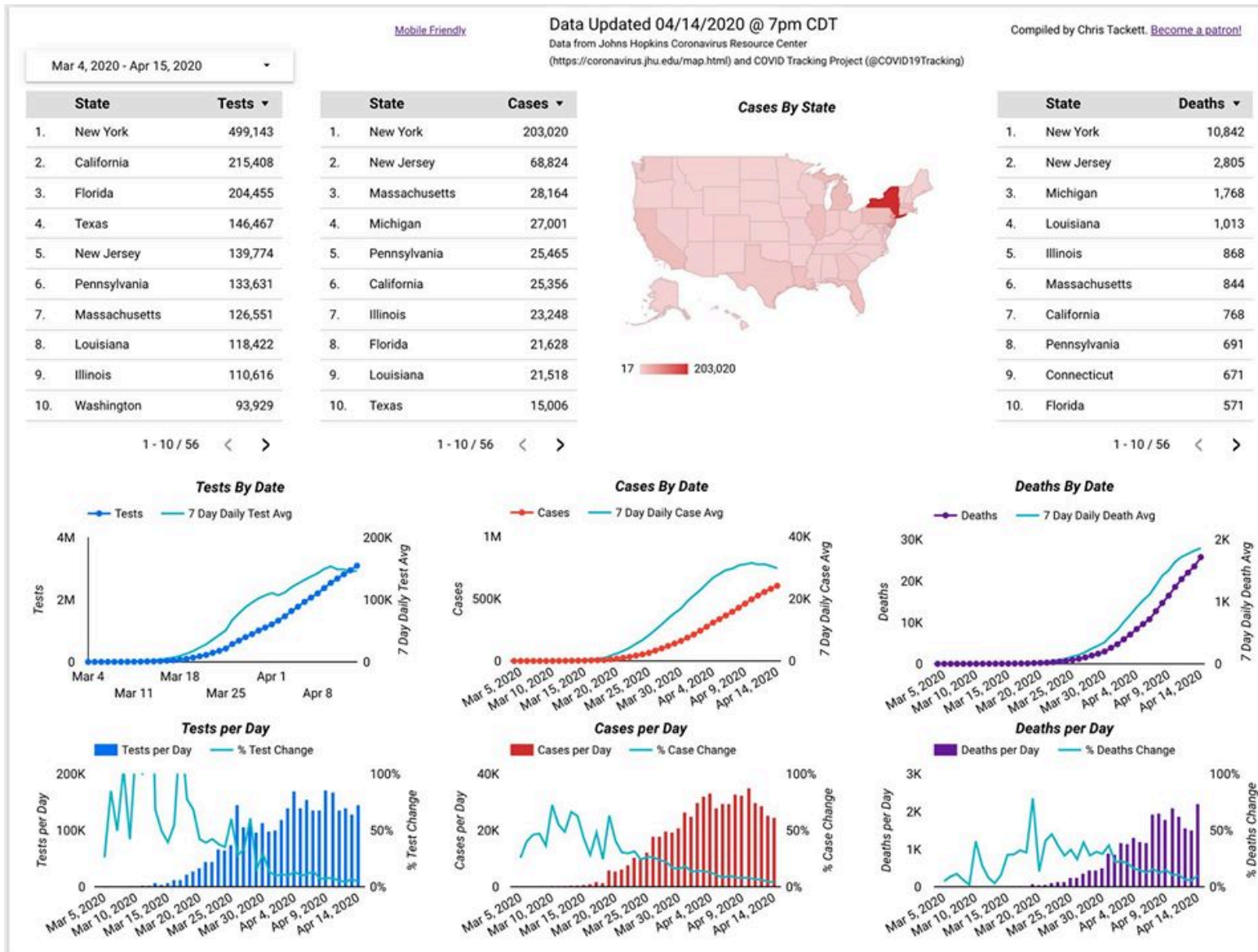
1 - 5 / 46 < >



Cases in the US

- 605,030 cases (+24,575)
- 25,755 deaths (+2,228)
- 2,952,115 tests (+129,856)

The daily deaths are a new peak for the US. We have tested 3,098,698 (+146,053). Testing per day seems to have plateaued.



States Per 100K Comparison

Texas moved up 1 spot, passing Kansas and is now 50th on Testing per 100k people, with 505 tests per 100k.

We are 38th in Cases per 100k at 51.75, with a 10.25% positive rate, behind Arizona and ahead of Arkansas.

Texas is 41st in Deaths per 100k people at 1.18 with a 2.28% mortality rate, behind Alaska and ahead of North Carolina.

US States COVID-19 per 100k in Population

[Mobile Friendly](#)

Data Updated 04/14/2020 @ 7pm CDT

Compiled by Chris Tackett.

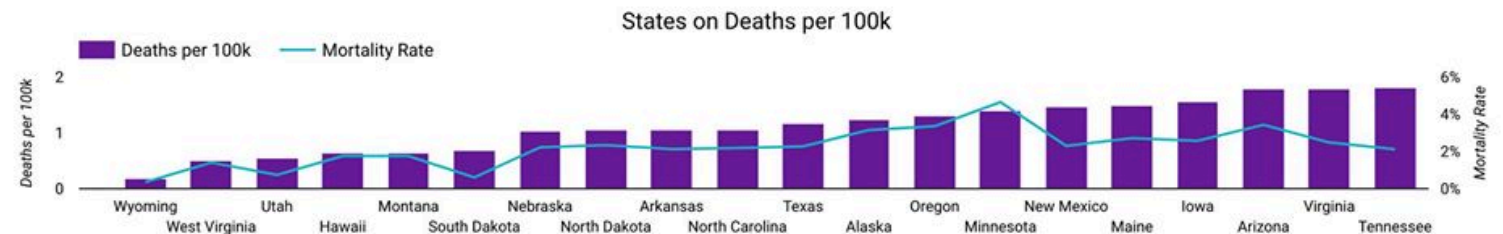
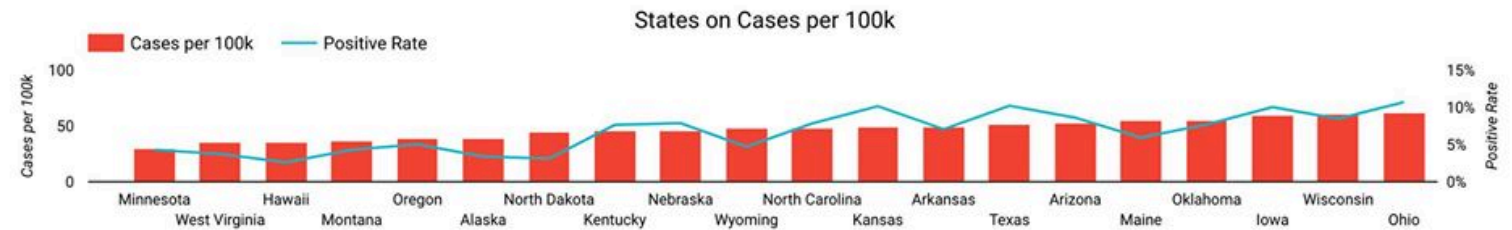
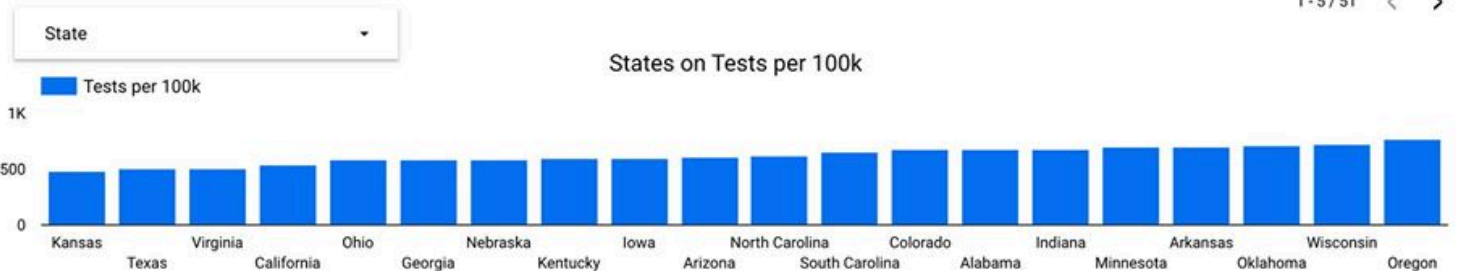
Data from Johns Hopkins Coronavirus Resource Center

[Become a patron!](#)

(<https://coronavirus.jhu.edu/map.html>) and COVID Tracking Project (@COVID19Tracking)

	State	Population	Tests	Tests per 100...	Cases	Cases per 10...	Positive R...	Deaths	Deaths per ...	Mortality ...
1.	New York	19,453,561	499,143	2,565.82	203,020	1,043.61	40.67%	10,842	55.73	5.34%
2.	Louisiana	4,648,794	118,422	2,547.37	21,518	462.87	18.17%	1,013	21.79	4.71%
3.	Rhode Island	1,059,361	22,900	2,161.68	3,251	306.88	14.2%	80	7.55	2.46%
4.	Massachusetts	6,949,503	126,551	1,821.01	28,164	405.27	22.26%	844	12.14	3%
5.	Vermont	623,989	10,585	1,696.34	752	120.51	7.1%	29	4.65	3.86%

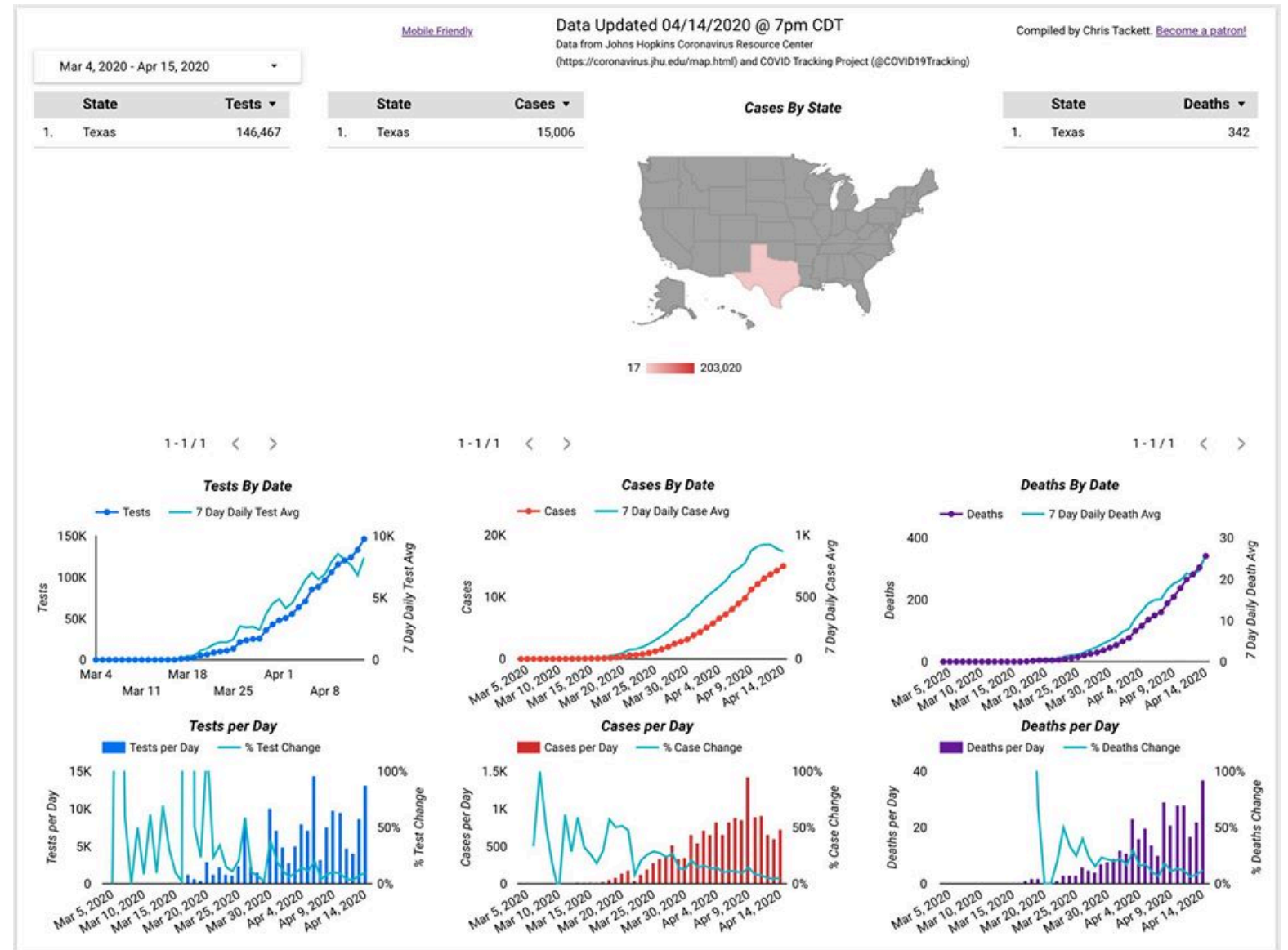
1 - 5 / 51 < >



Cases in Texas

- 15,006 cases (+731)
- 342 deaths (+37)
- 146,467 tests (+13,241)

The daily deaths are at a new high for Texas.



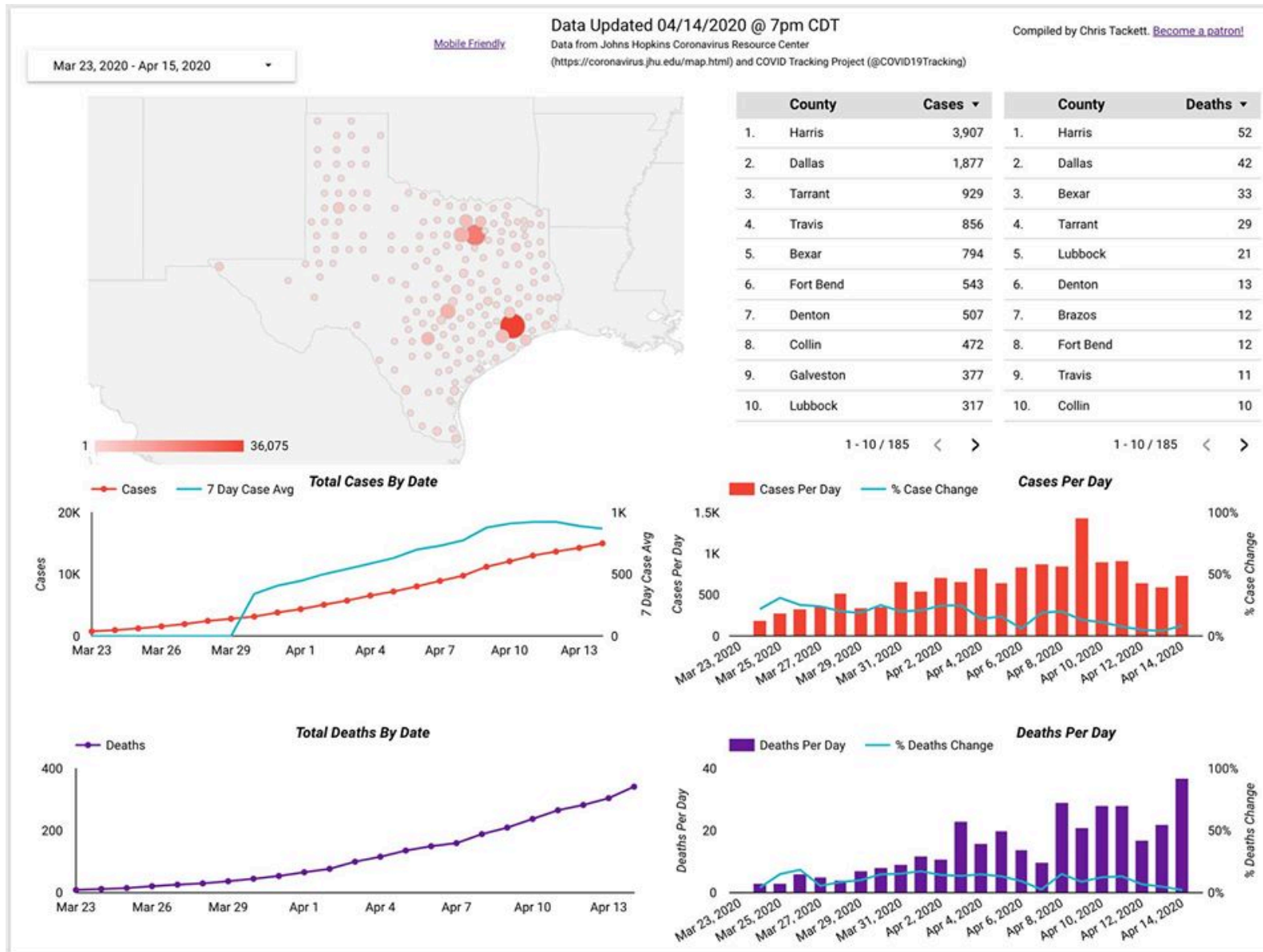
Cases by Texas Counties

The top five counties for counties are:

- Harris – 3,907
- Dallas – 1,877
- Tarrant – 929
- Travis – 856
- Bexar – 794

21 counties have 100+ cases, 85 have 10+, and 185 have at least 1 case.

10 counties have lost 10+ Texans, 61 have lost at least 1.



Texas Counties per 10K

- Top 5 per 10k residents are Donley, Castro, Shelby, Oldham, and Matagorda.
- Galveston County, which is 9th on overall cases with 377 cases, is also 7th on the per 10k list, with a rate of 11.16 cases per 10,000 residents.

TX Counties COVID-19 per 10k in Population

[Mobile Friendly](#)

Data Updated 04/14/2020 @ 7pm CDT

Compiled by Chris Tackett.

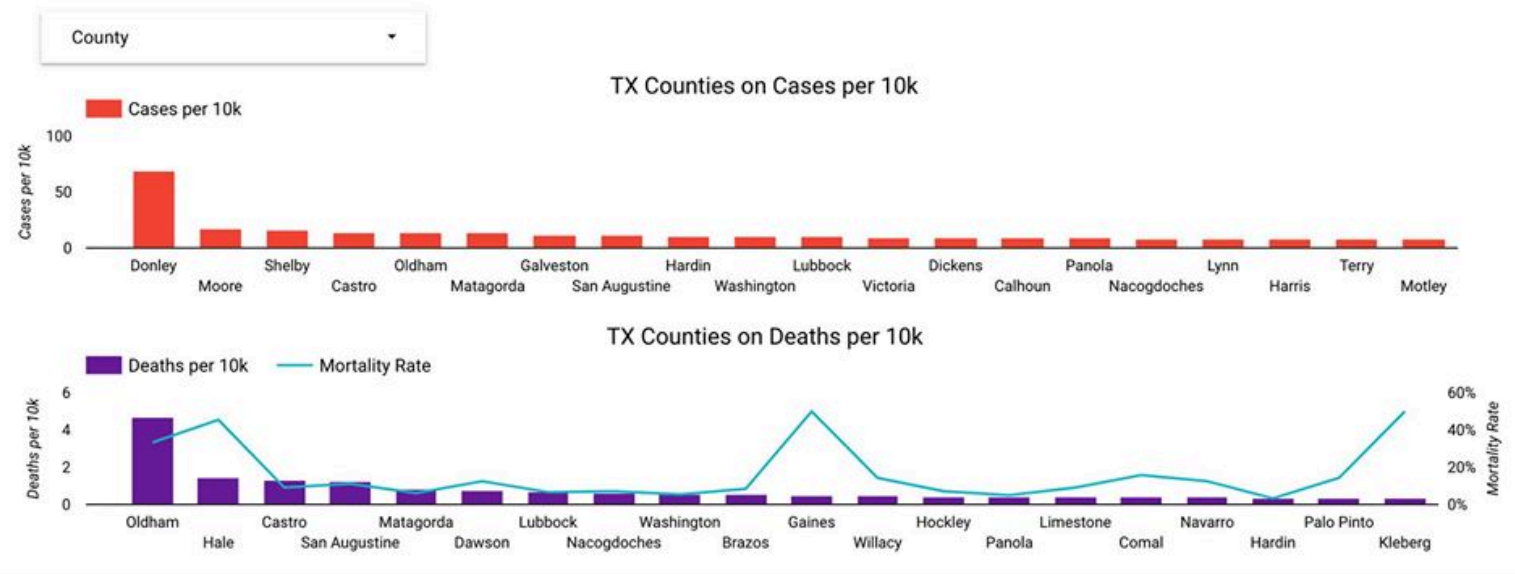
Data from Johns Hopkins Coronavirus Resource Center


[Become a patron!](#)

(<https://coronavirus.jhu.edu/map.html>) and COVID Tracking Project (@COVID19Tracking)

	County	Population	Cases	Cases per 10k ▾	Deaths	Deaths per 10k	Mortality Rate
1.	Donley	3,319	23	69.30	0	0.00	0%
2.	Moore	21,485	36	16.76	0	0.00	0%
3.	Shelby	25,418	40	15.74	0	0.00	0%
4.	Castro	7,665	11	14.35	1	1.30	9.09%
5.	Oldham	2,131	3	14.08	1	4.69	33.33%
6.	Matagorda	36,552	49	13.41	3	0.82	6.12%
7.	Galveston	337,890	377	11.16	9	0.27	2.39%
8.	San Augustine	8,232	9	10.93	1	1.21	11.11%
9.	Hardin	57,207	61	10.66	2	0.35	3.28%
10.	Washington	35,108	37	10.54	2	0.57	5.41%

1 - 10 / 254 < >





New mobile friendly version of the dashboards can be
found here: bit.ly/usccovid19mapm

Regular version (where the screenshots come from)
can be found here: bit.ly/usccovid19map.

Stay home if you can. Stay safe.