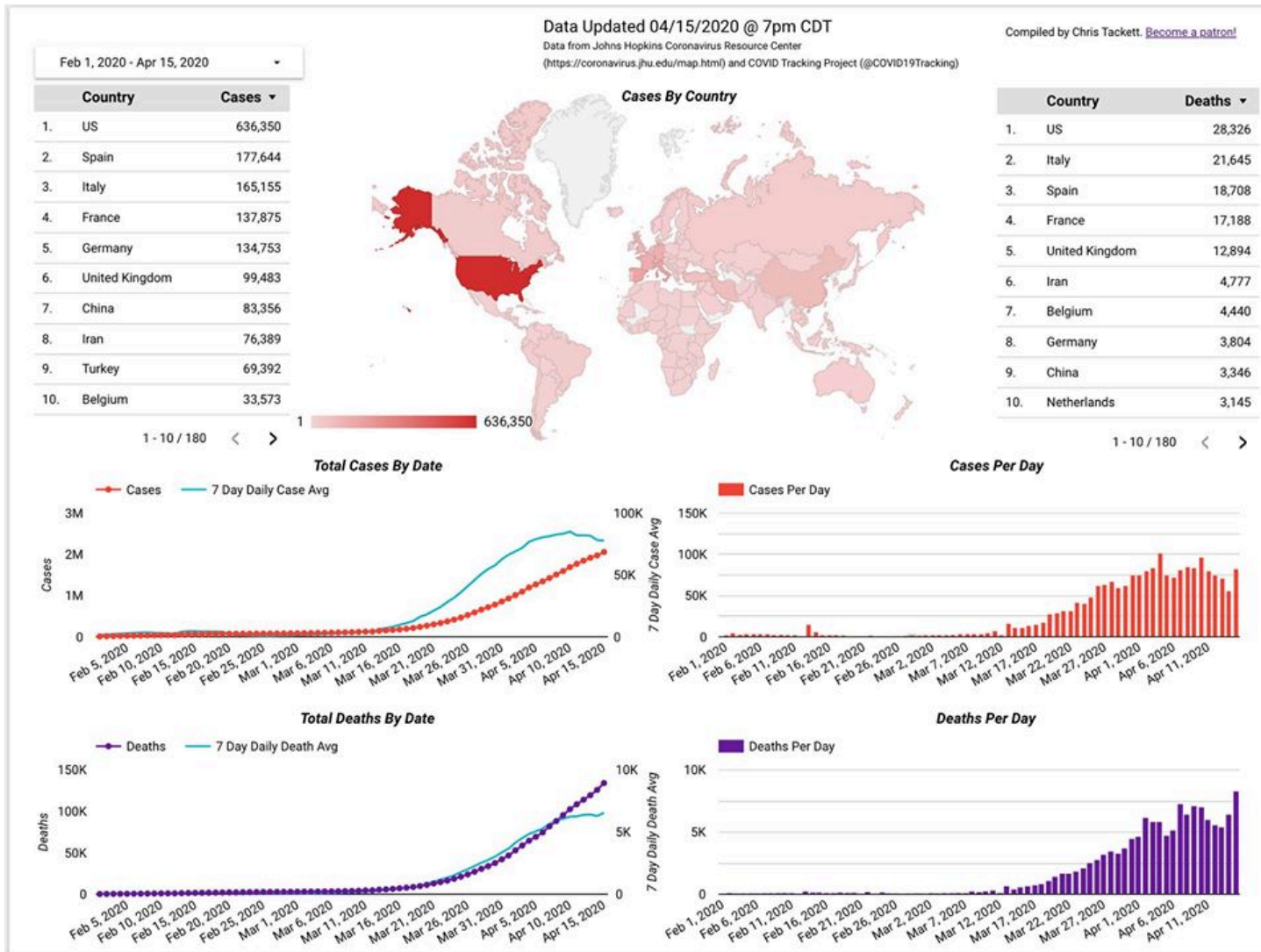


# COVID-19 Trends as of April 15, 2020

Compiled by Chris Tackett



# Cases in the World

- 2,055,831 cases (+82,334)
- 134,158 deaths (+8,268)

The daily case number is back up, and the daily death number is an all time high. We've crossed 2M cases globally.

# Countries per 1M

## The US ranks

- 18th in Testing per 1M, below South Korea and above of Belgium
- 8th in Cases per 1M at 1,922, with a 19.62% positive rate, just below France and ahead of Portugal.
- 10th in Deaths per 1M at 85.58, with a 4.45% mortality rate, just below Ireland and ahead of Portugal.

## Country COVID-19 per 1M in Population

[Mobile Friendly](#)

Data Updated 04/15/2020 @ 7pm CDT

Compiled by Chris Tackett.

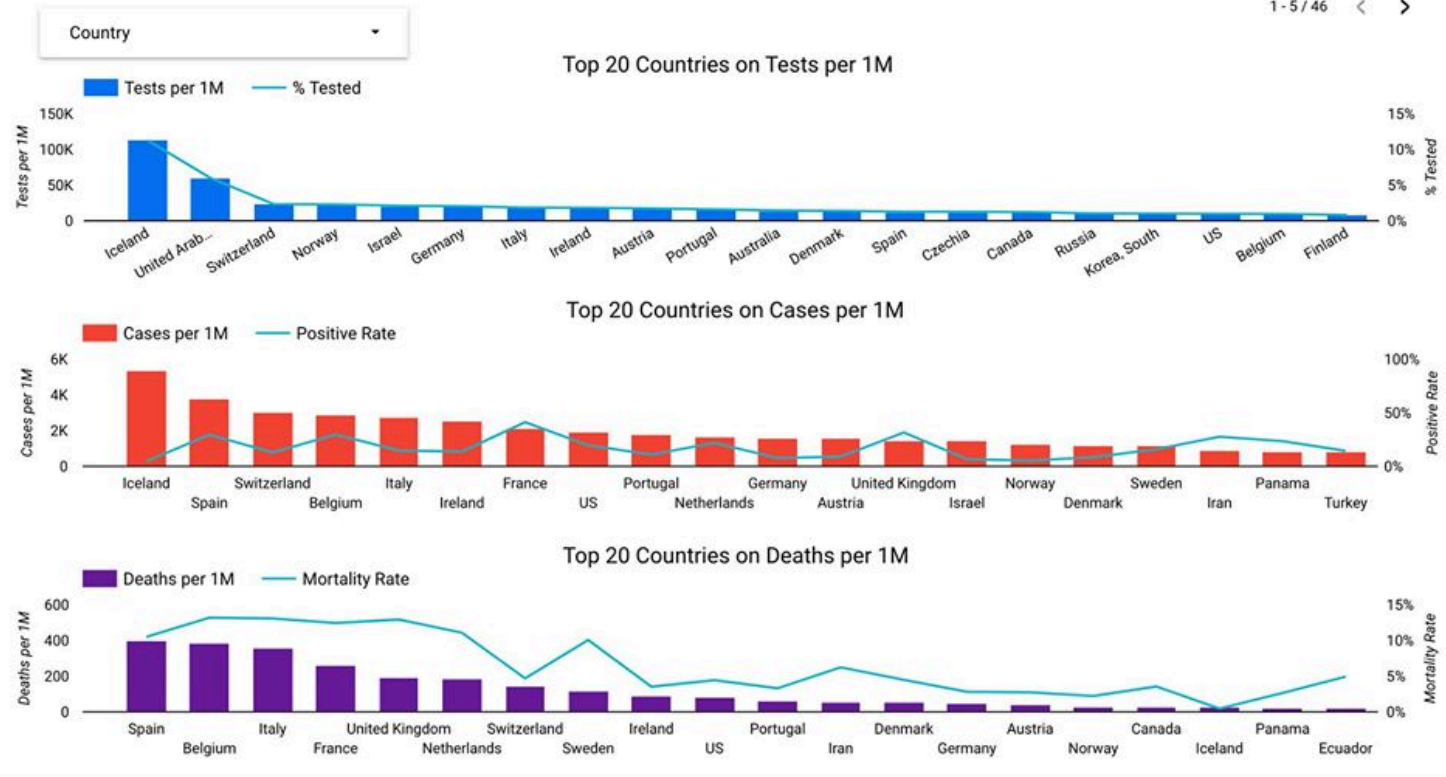
Data from Johns Hopkins Coronavirus Resource Center

[Become a patron!](#)

(<https://coronavirus.jhu.edu/map.html>) and COVID Tracking Project (@COVID19Tracking)

	Country	Population	Tests	Tests per 1M ▾	Cases	Cases per 1M	Positive...	Deaths	Deaths per 1M	Mortalit...
1.	Iceland	321,243	36,339	113,119.97	1,727	5,375.99	4.75%	8	24.9	0.46%
2.	United Arab Emirates	9,890,402	593,095	59,966.72	5,365	542.45	0.9%	33	3.34	0.62%
3.	Switzerland	8,654,622	202,633	23,413.27	26,336	3,043.00	13%	1,239	143.16	4.7%
4.	Norway	5,421,241	124,279	22,924.46	6,740	1,243.26	5.42%	150	27.67	2.23%
5.	Israel	8,655,535	183,825	21,237.86	12,501	1,444.28	6.8%	130	15.02	1.04%

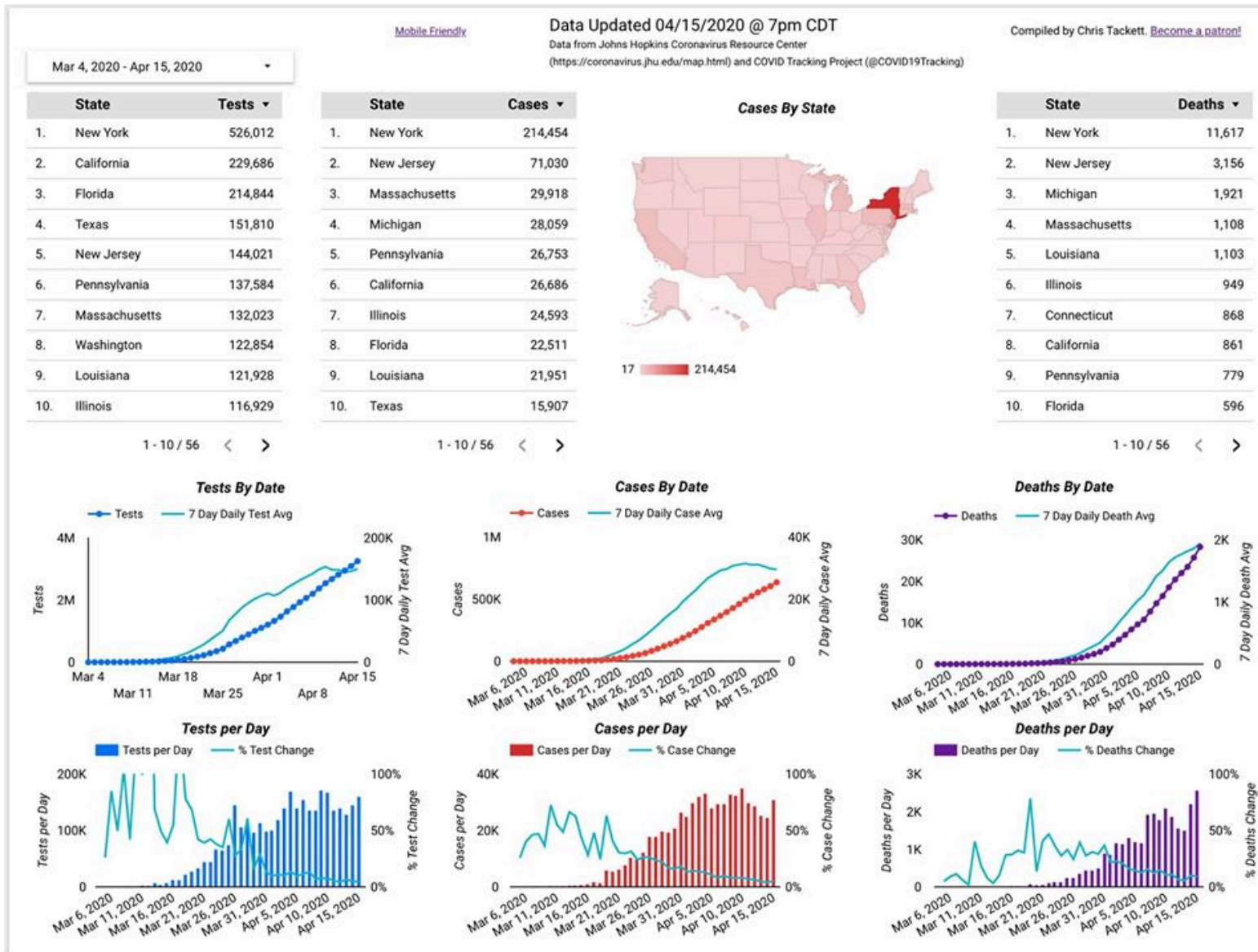
1 - 5 / 46 < >



# Cases in the US

- 636,185 cases (+31,155)
- 28,324 deaths (+2,569)
- 3,259,589 tests (+161,421)

The daily deaths are a new peak for the US, and the daily cases are an increase of almost 6k vs yesterday. Testing per day seems to have plateaued.





# States Per 100K Comparison

Texas is 49th on Testing per 100k people, with 523 tests per 100k.

We are 38th in Cases per 100k at 54.86, with a 10.48% positive rate, behind Oklahoma and ahead of Arizona.

Texas is 40th in Deaths per 100k people at 1.29 with a 2.36% mortality rate, behind Oregon and ahead of North Carolina.

## US States COVID-19 per 100k in Population

[Mobile Friendly](#)

Data Updated 04/15/2020 @ 7pm CDT

Compiled by Chris Tackett.

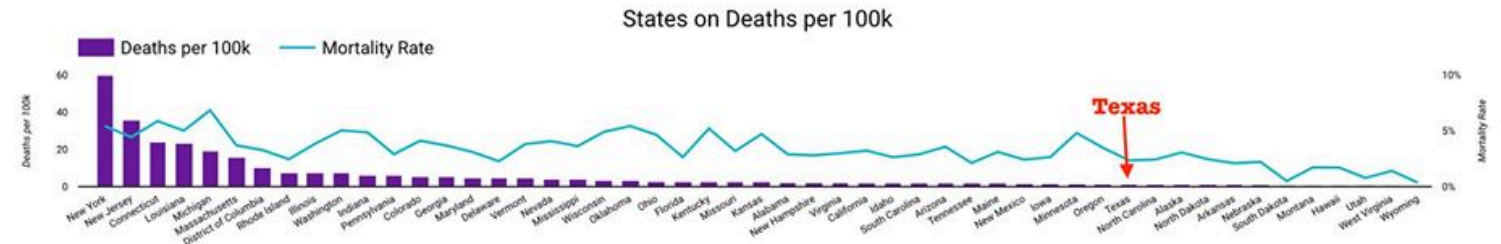
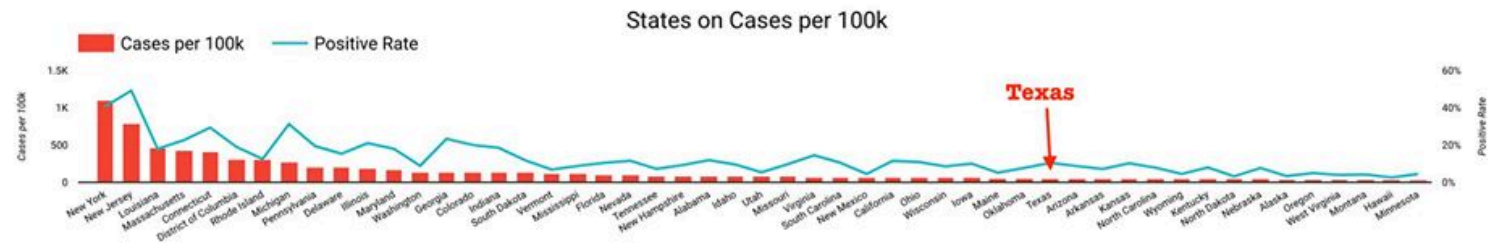
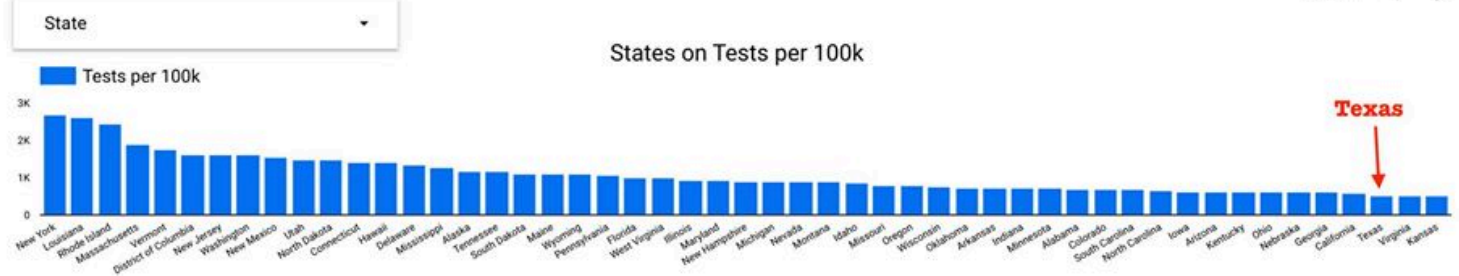
Data from Johns Hopkins Coronavirus Resource Center

[Become a patron!](#)

(<https://coronavirus.jhu.edu/map.html>) and COVID Tracking Project (@COVID19Tracking)

	State	Population	Tests	Tests per 100...	Cases	Cases per 10...	Positive R...	Deaths	Deaths per ...	Mortality ...
1.	New York	19,453,561	526,012	2,703.94	214,454	1,102.39	40.77%	11,617	59.72	5.42%
2.	Louisiana	4,648,794	121,928	2,622.79	21,951	472.19	18%	1,103	23.73	5.02%
3.	Rhode Island	1,059,361	25,897	2,444.59	3,251	306.88	12.55%	80	7.55	2.46%
4.	Massachusetts	6,949,503	132,023	1,899.75	29,918	430.51	22.66%	1,108	15.94	3.7%
5.	Vermont	623,989	11,081	1,775.83	759	121.64	6.85%	29	4.65	3.82%

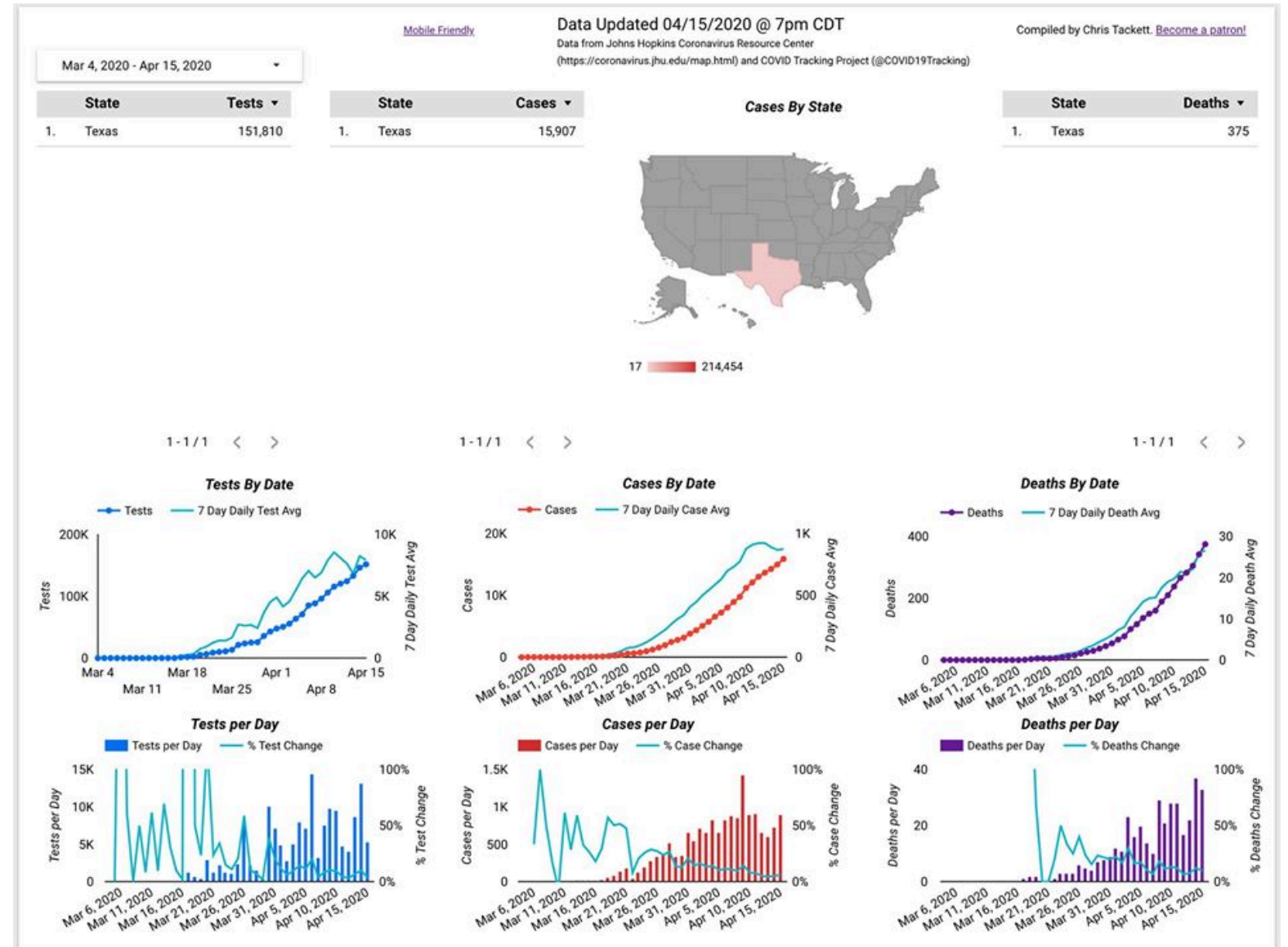
1 - 5 / 51 < >



# Cases in Texas

- 15,907 cases (+901)
- 375 deaths (+33)
- 151,810 tests (+5,343)

This is no time to open things back up. Referencing the States per 100k and Texas: If you don't test, you don't find cases. If you don't find cases, you aren't counting the full numbers as deaths. That is our reality.



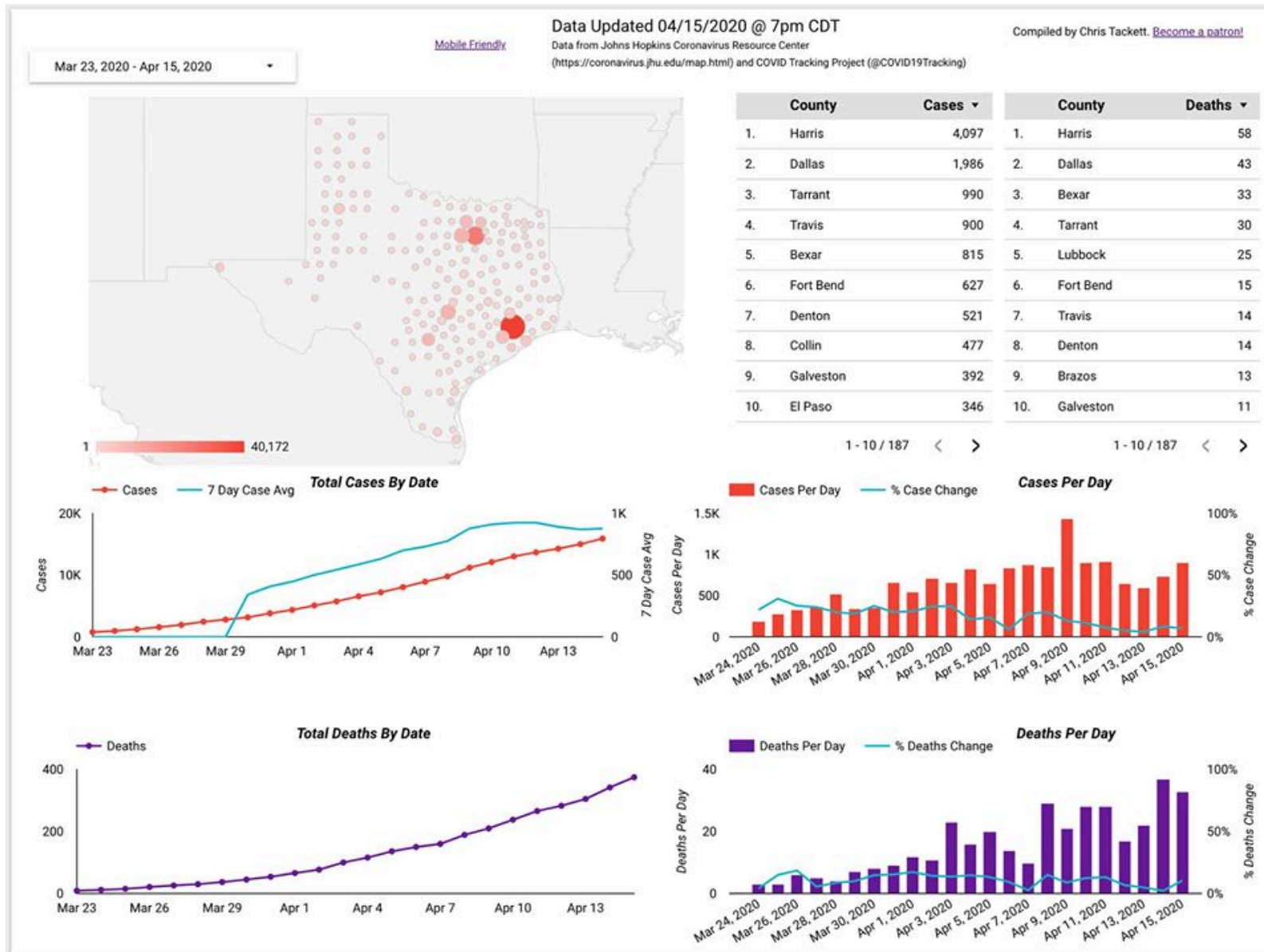
# Cases by Texas Counties

The top five counties for counties are:

- Harris – 4,097
- Dallas – 1,986
- Tarrant – 990
- Travis – 900
- Bexar – 815

22 counties have 100+ cases, 86 have 10+, and 187 have at least 1 case.

11 counties have lost 10+ Texans, 63 have lost at least 1.



## Texas Counties per 10K

- Top 5 per 10k residents are Donley, Castro, Shelby, Oldham, and Matagorda.
- Galveston County, which is 9th on overall cases with 392 cases, is also 8th on the per 10k list, with a rate of 11.60 cases per 10,000 residents.

### TX Counties COVID-19 per 10k in Population

[Mobile Friendly](#)

Data Updated 04/15/2020 @ 7pm CDT

Compiled by Chris Tackett.

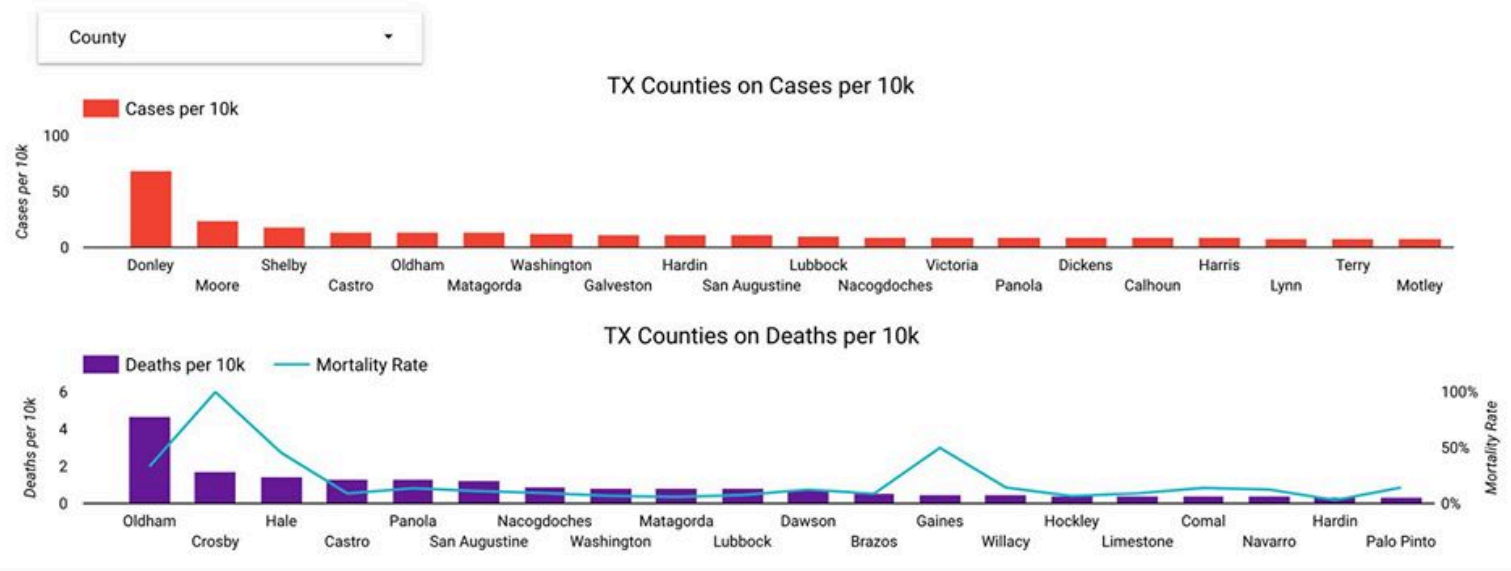
Data from Johns Hopkins Coronavirus Resource Center

[Become a patron!](#)


(<https://coronavirus.jhu.edu/map.html>) and COVID Tracking Project (@COVID19Tracking)

	County	Population	Cases	Cases per 10k ▾	Deaths	Deaths per 10k	Mortality Rate
1.	Donley	3,319	23	69.30	0	0.00	0%
2.	Moore	21,485	52	24.20	0	0.00	0%
3.	Shelby	25,418	46	18.10	0	0.00	0%
4.	Castro	7,665	11	14.35	1	1.30	9.09%
5.	Oldham	2,131	3	14.08	1	4.69	33.33%
6.	Matagorda	36,552	51	13.95	3	0.82	5.88%
7.	Washington	35,108	44	12.53	3	0.85	6.82%
8.	Galveston	337,890	392	11.60	11	0.33	2.81%
9.	Hardin	57,207	65	11.36	2	0.35	3.08%
10.	San Augustine	8,232	9	10.93	1	1.21	11.11%

1 - 10 / 254 < >







New mobile friendly version of the dashboards can be  
found here: [bit.ly/usccovid19mapm](https://bit.ly/usccovid19mapm)

Regular version (where the screenshots come from)  
can be found here: [bit.ly/usccovid19map](https://bit.ly/usccovid19map).

**Stay home if you can. Stay safe.**