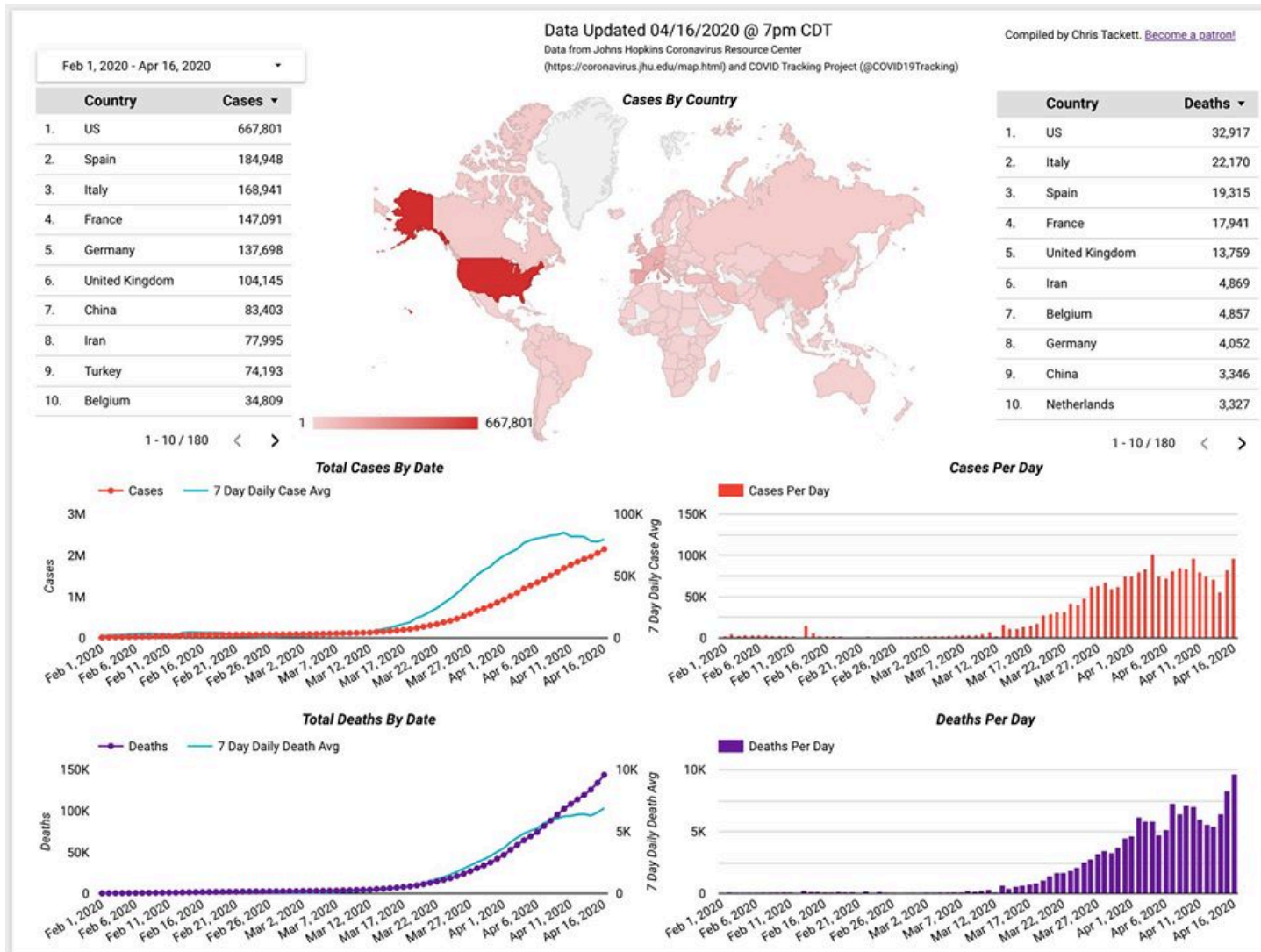


# COVID-19 Trends as of April 16, 2020

Compiled by Chris Tackett





# Cases in the World

- 2,152,398 cases (+96,567)
- 143,782 deaths (+9,624)

The daily case number is back up close to an all time high, and the daily death number is an all time high.



# Countries per 1M

## The US ranks

- 17th in Testing per 1M, below Russia and above of South Korea.
- 8th in Cases per 1M at 2,017, with a 19.54% positive rate, just below France and ahead of Portugal.
- 9th in Deaths per 1M at 99.45, with a 4.93% mortality rate, just below Sweden and ahead of Ireland.

## Country COVID-19 per 1M in Population

[Mobile Friendly](#)

Data Updated 04/16/2020 @ 7pm CDT

Compiled by Chris Tackett.

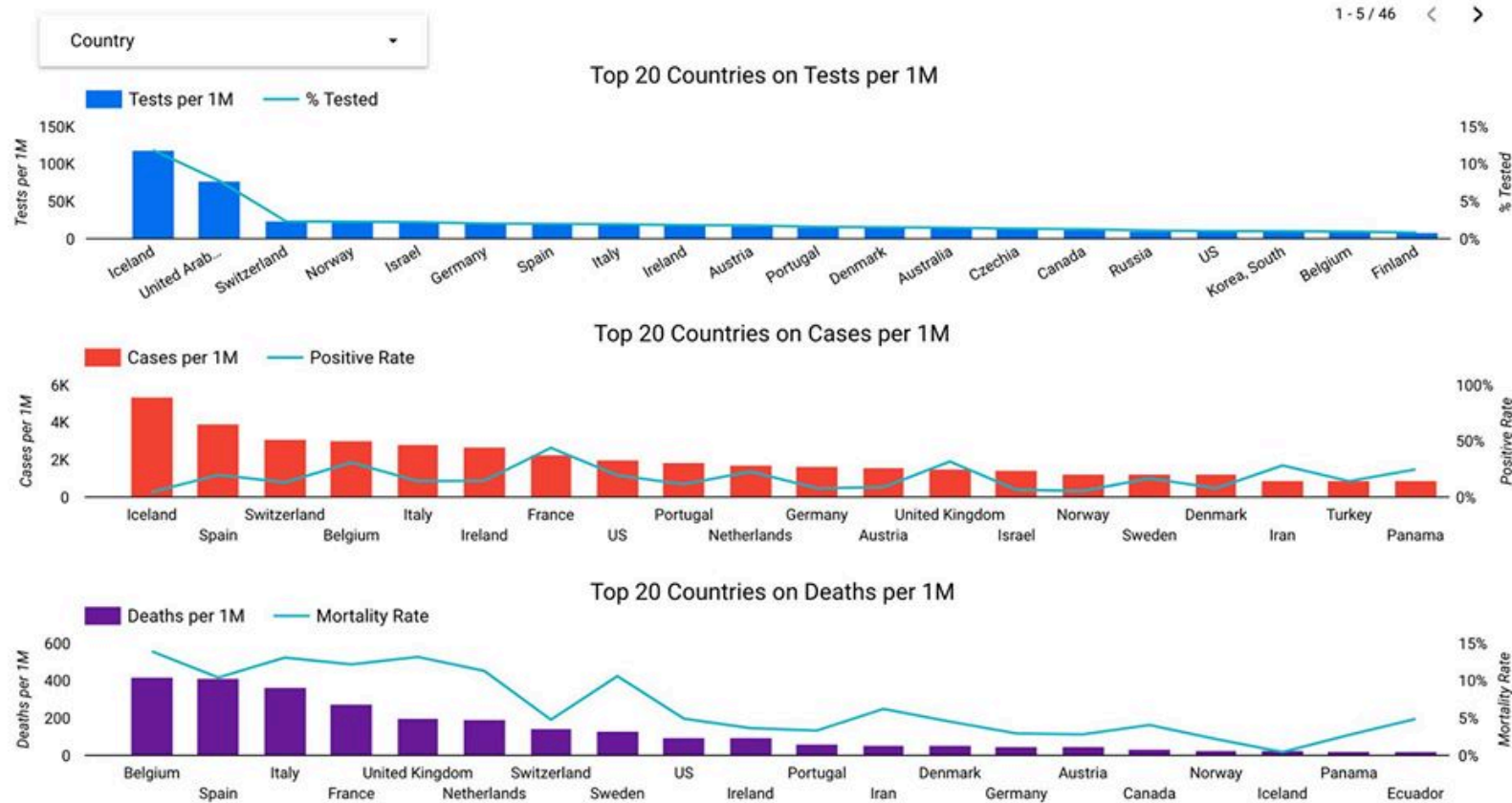
Data from Johns Hopkins Coronavirus Resource Center

[Become a patron!](#)

(<https://coronavirus.jhu.edu/map.html>) and COVID Tracking Project (@COVID19Tracking)

	Country	Population	Tests	Tests per 1M ▾	Cases	Cases per 1M	Positive...	Deaths	Deaths per 1M	Mortalit...
1.	Iceland	321,243	38,204	118,925.55	1,739	5,413.35	4.55%	8	24.9	0.46%
2.	United Arab Emirates	9,890,402	767,000	77,549.93	5,825	588.95	0.76%	35	3.54	0.6%
3.	Switzerland	8,654,622	202,633	23,413.27	26,732	3,088.75	13.19%	1,281	148.01	4.79%
4.	Norway	5,421,241	124,279	22,924.46	6,896	1,272.03	5.55%	152	28.04	2.2%
5.	Israel	8,655,535	193,194	22,320.28	12,758	1,473.97	6.6%	142	16.41	1.11%

1 - 5 / 46 < >

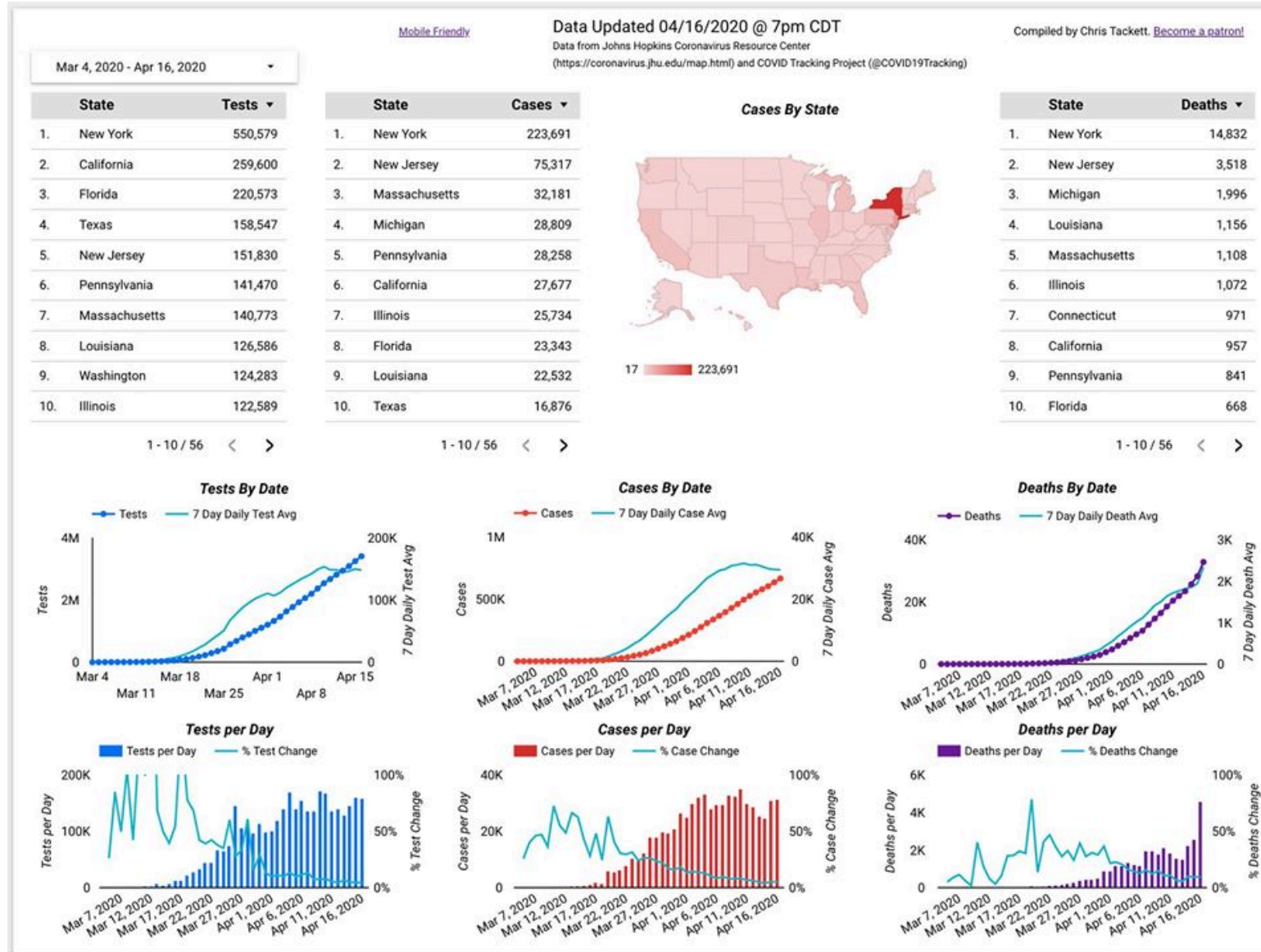




# Cases in the US

- 667,636 cases (+31,145)
- 32,915 deaths (+4,591)
- 3,417,924 tests (+158,335)

The daily deaths shot up today, a full 2,000 above the day before. Testing per day has plateaued.





# States Per 100K Comparison

Texas is back in last (51st) on Testing per 100k people with 546 tests per 100k.

We are 38th in Cases per 100k at 58.2, with a 10.64% positive rate, behind Arizona and ahead of Kansas.

Texas is 41st in Deaths per 100k people at 1.43, with a 2.45% mortality rate, behind North Carolina and ahead of Alaska.

## US States COVID-19 per 100k in Population

[Mobile Friendly](#)

Data Updated 04/16/2020 @ 7pm CDT

Compiled by Chris Tackett.

Data from Johns Hopkins Coronavirus Resource Center

[Become a patron!](#)

(<https://coronavirus.jhu.edu/map.html>) and COVID Tracking Project (@COVID19Tracking)

	State	Population	Tests	Tests per 100...	Cases	Cases per 10...	Positive R...	Deaths	Deaths per ...	Mortality ...
1.	New York	19,453,561	550,579	2,830.22	223,691	1,149.87	40.63%	14,832	76.24	6.63%
2.	Louisiana	4,648,794	126,586	2,722.99	22,532	484.68	17.8%	1,156	24.87	5.13%
3.	Rhode Island	1,059,361	28,064	2,649.14	3,529	333.13	12.57%	87	8.21	2.47%
4.	Massachusetts	6,949,503	140,773	2,025.66	32,181	463.07	22.86%	1,108	15.94	3.44%
5.	Vermont	623,989	11,507	1,844.10	774	124.04	6.73%	33	5.29	4.26%

1 - 5 / 51 < >

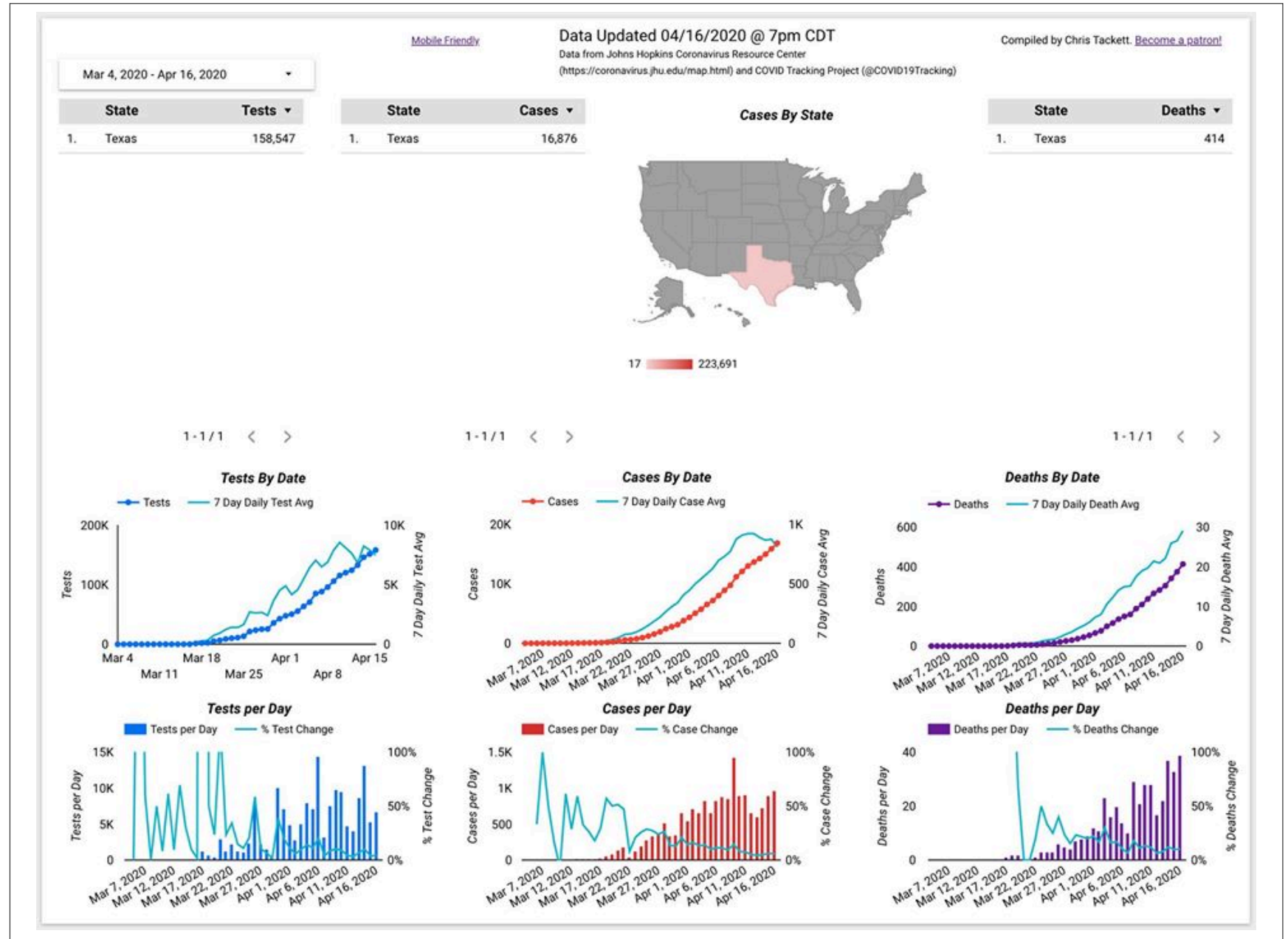




# Cases in Texas

- 16,876 cases (+969)
- 414 deaths (+39)
- 158,547 tests (+6,737)

This is three days in a row of daily cases increasing, and a daily high for deaths. Referencing the States per 100k and Texas: If you don't test, you don't find cases. If you don't cases, you aren't counting the full numbers as deaths. That is our reality.





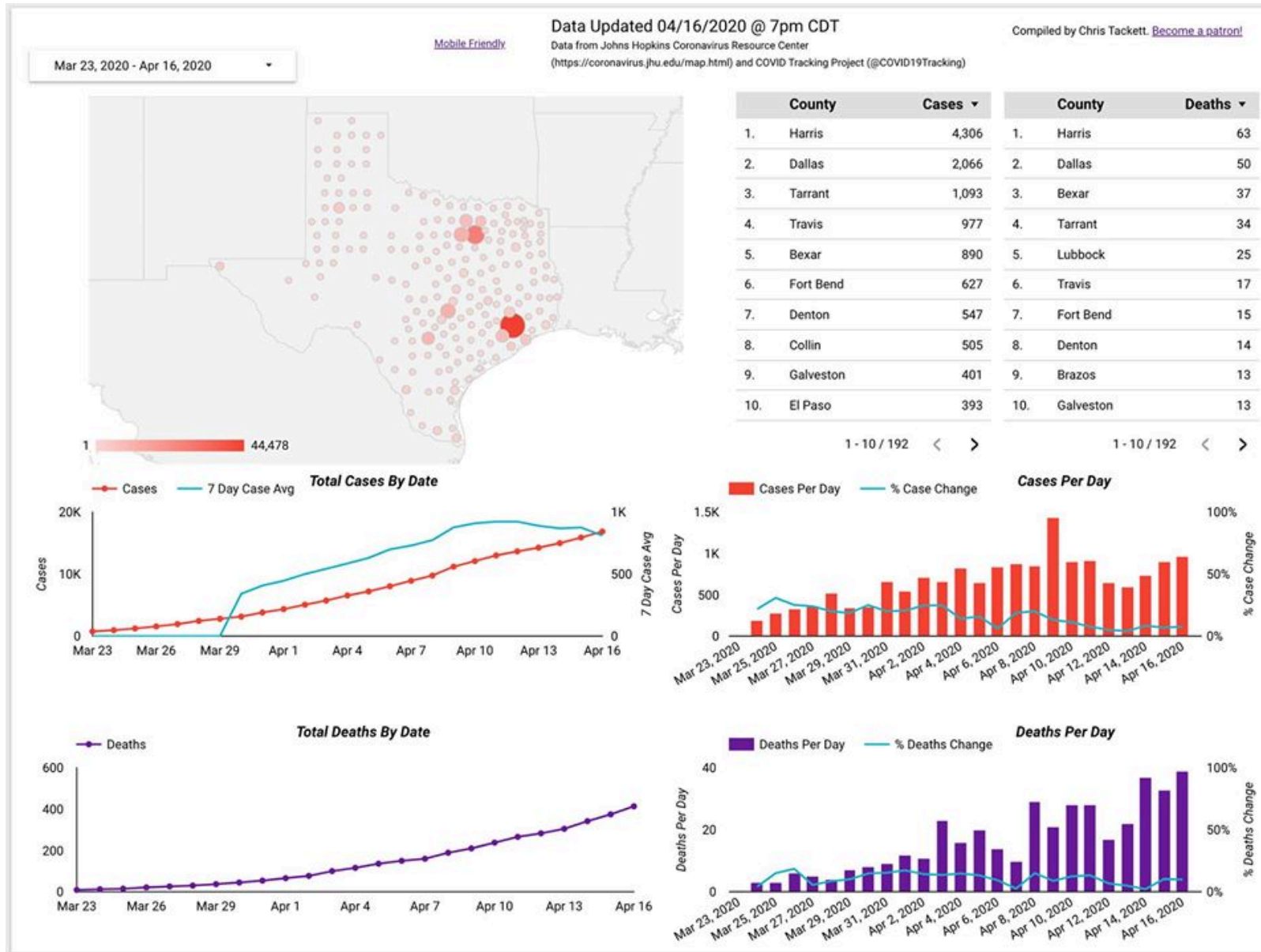
# Cases by Texas Counties

The top five counties for counties are:

- Harris – 4,306
- Dallas – 2,066
- Tarrant – 1,096
- Travis – 977
- Bexar – 890

22 counties have 100+ cases, 88 have 10+, and 192 have at least 1 case.

12 counties have lost 10+ Texans, 67 have lost at least 1.





## Texas Counties per 10K

- Top 5 per 10k residents are Donley, Castro, Shelby, Oldham, and Matagorda.
- Lubbock County, which is 11th on overall cases with 367, is 10th on the per 10k list, with a rate of 11.04 cases per 10,000 residents.

### TX Counties COVID-19 per 10k in Population

[Mobile Friendly](#)

Data Updated 04/16/2020 @ 7pm CDT

Compiled by Chris Tackett.

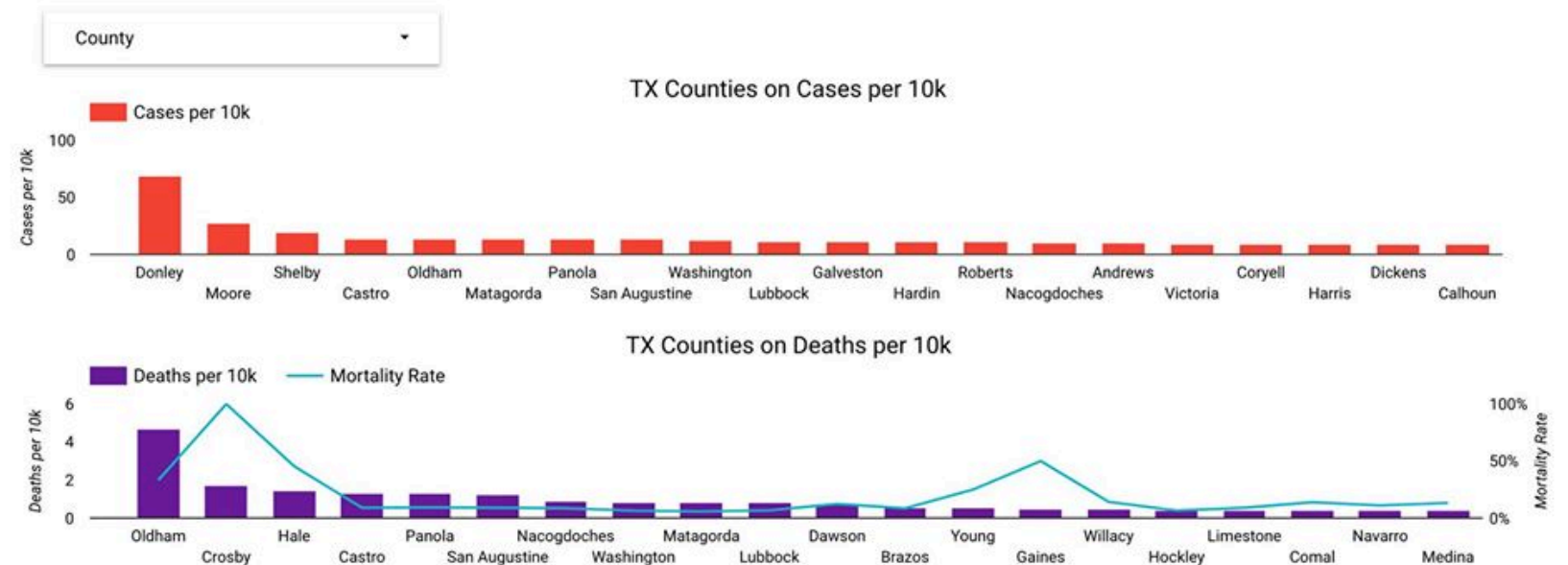
Data from Johns Hopkins Coronavirus Resource Center

[Become a patron!](#)


(<https://coronavirus.jhu.edu/map.html>) and COVID Tracking Project (@COVID19Tracking)

	County	Population	Cases	Cases per 10k ▾	Deaths	Deaths per 10k	Mortality Rate
1.	Donley	3,319	23	69.30	0	0.00	0%
2.	Moore	21,485	59	27.46	0	0.00	0%
3.	Shelby	25,418	51	20.06	0	0.00	0%
4.	Castro	7,665	11	14.35	1	1.30	9.09%
5.	Oldham	2,131	3	14.08	1	4.69	33.33%
6.	Matagorda	36,552	51	13.95	3	0.82	5.88%
7.	Panola	23,148	32	13.82	3	1.30	9.38%
8.	San Augustine	8,232	11	13.36	1	1.21	9.09%
9.	Washington	35,108	46	13.10	3	0.85	6.52%
10.	Lubbock	307,412	367	11.94	25	0.81	6.81%

1 - 10 / 254 < >







New mobile friendly version of the dashboards can be  
found here: [bit.ly/usccovid19mapm](https://bit.ly/usccovid19mapm)

Regular version (where the screenshots come from)  
can be found here: [bit.ly/usccovid19map](https://bit.ly/usccovid19map).

**Stay home if you can. Stay safe.**