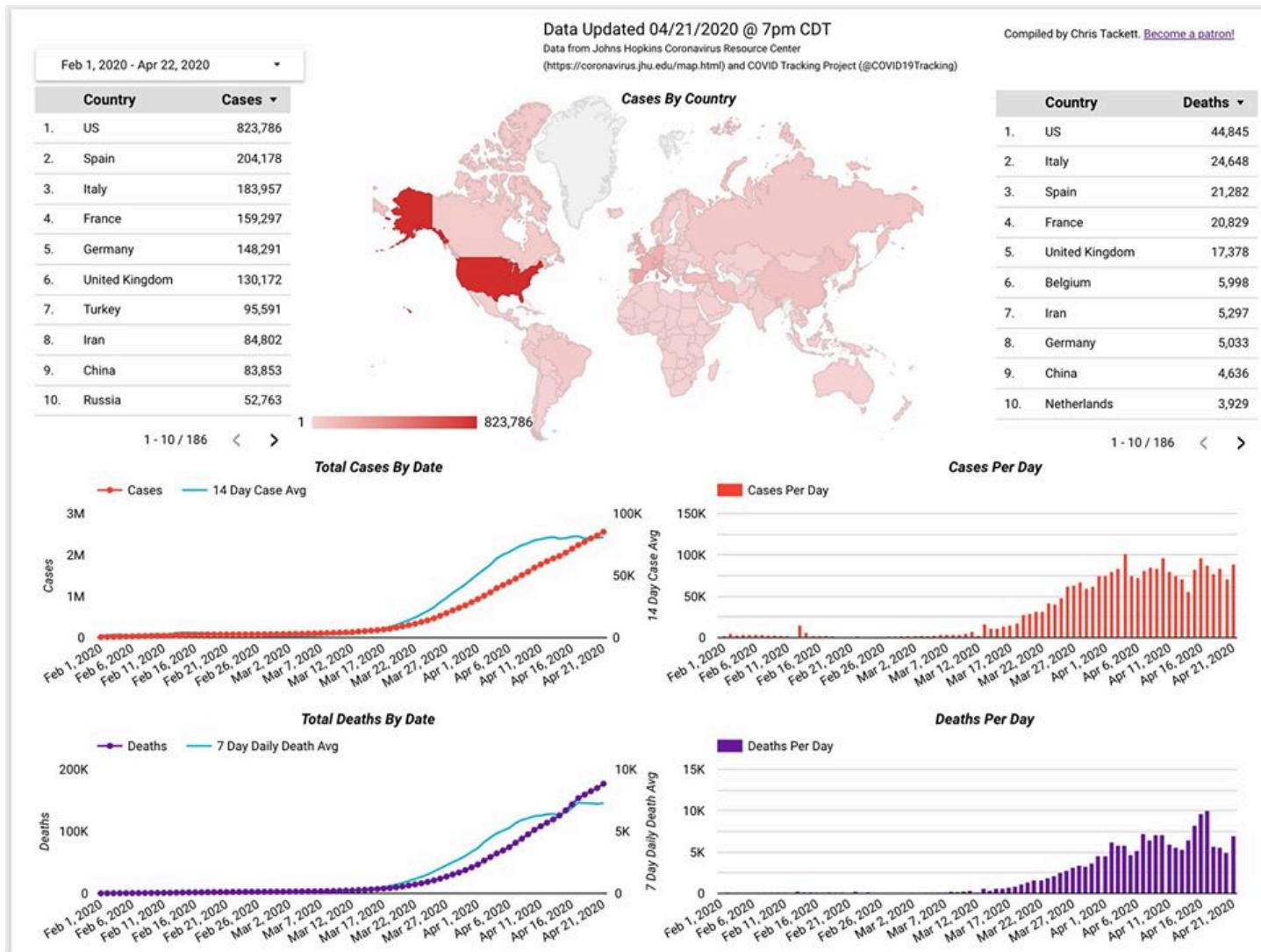


COVID-19 Trends as of April 21, 2020

Compiled by Chris Tackett



Cases in the World

- 2,560,995 cases (+88,784)
- 176,977 deaths (+6,998)

The world daily case numbers on the 14 day average seem to have plateaued. Still really big daily numbers, but consistent.

Countries per 1M

The US ranks

- 18th in Testing per 1M, below Belgium and ahead of Finland.
- 7th in Cases per 1M at 2,488, with a 19.81% positive rate, just below Italy and ahead of France.
- 10th in Deaths per 1M at 135.48, with a 5.44% mortality rate, just below Ireland and ahead of Portugal.

Country COVID-19 per 1M in Population

[Mobile Friendly](#)

Data Updated 04/21/2020 @ 7pm CDT

Compiled by Chris Tackett.

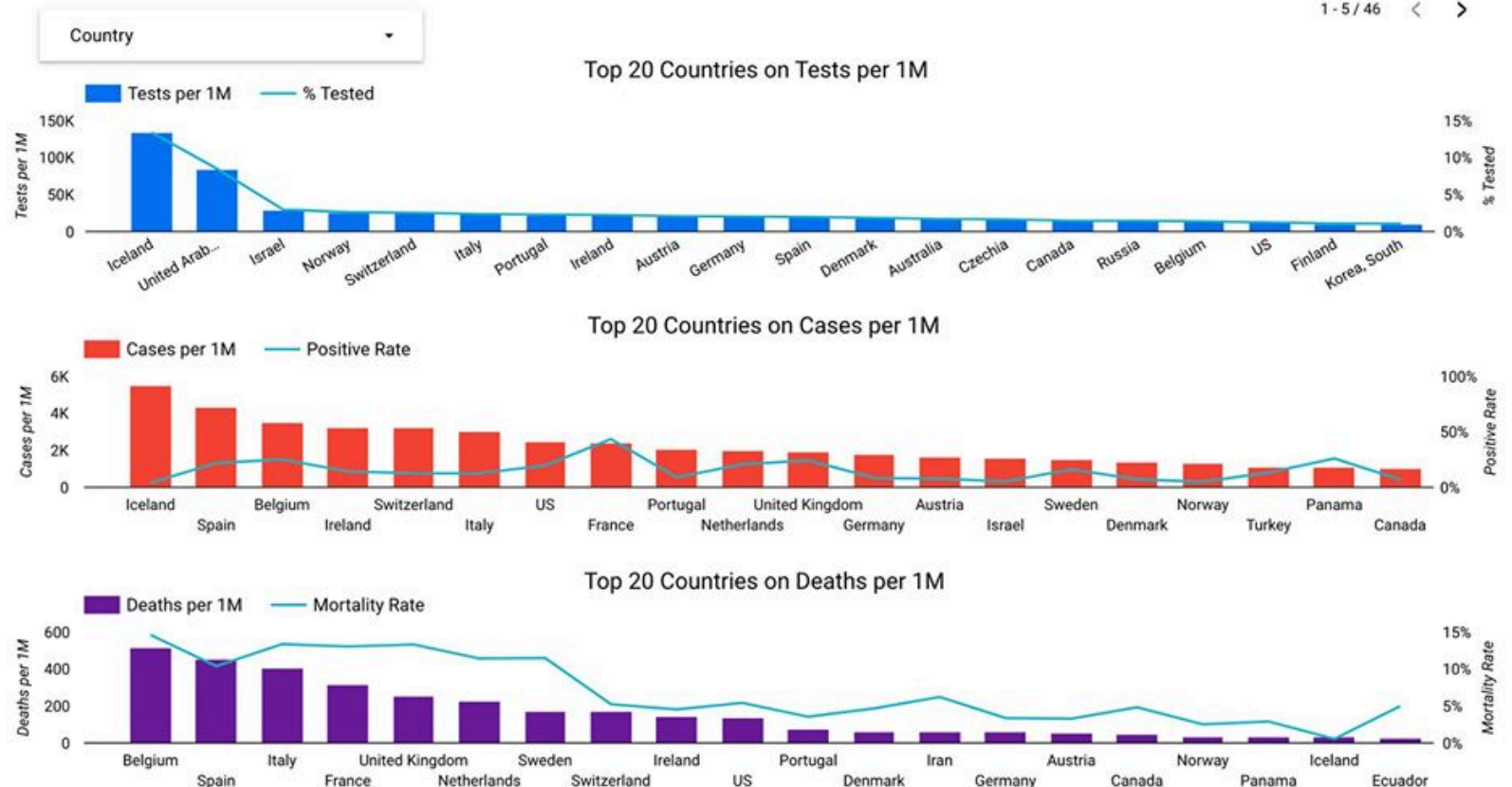
Data from Johns Hopkins Coronavirus Resource Center

[Become a patron!](#)

(<https://coronavirus.jhu.edu/map.html>) and COVID Tracking Project (@COVID19Tracking)

	Country	Population	Tests	Tests per 1M ▾	Cases	Cases per 1M	Positive...	Deaths	Deaths per 1M	Mortalit...
1.	Iceland	321,243	43,143	134,300.20	1,778	5,534.75	4.12%	10	31.13	0.56%
2.	United Arab Emirates	9,890,402	839,000	84,829.72	7,755	784.09	0.92%	46	4.65	0.59%
3.	Israel	8,655,535	258,983	29,921.09	13,942	1,610.76	5.38%	184	21.26	1.32%
4.	Norway	5,421,241	143,255	26,424.76	7,191	1,326.45	5.02%	182	33.57	2.53%
5.	Switzerland	8,654,622	221,263	25,565.88	28,063	3,242.54	12.68%	1,478	170.78	5.27%

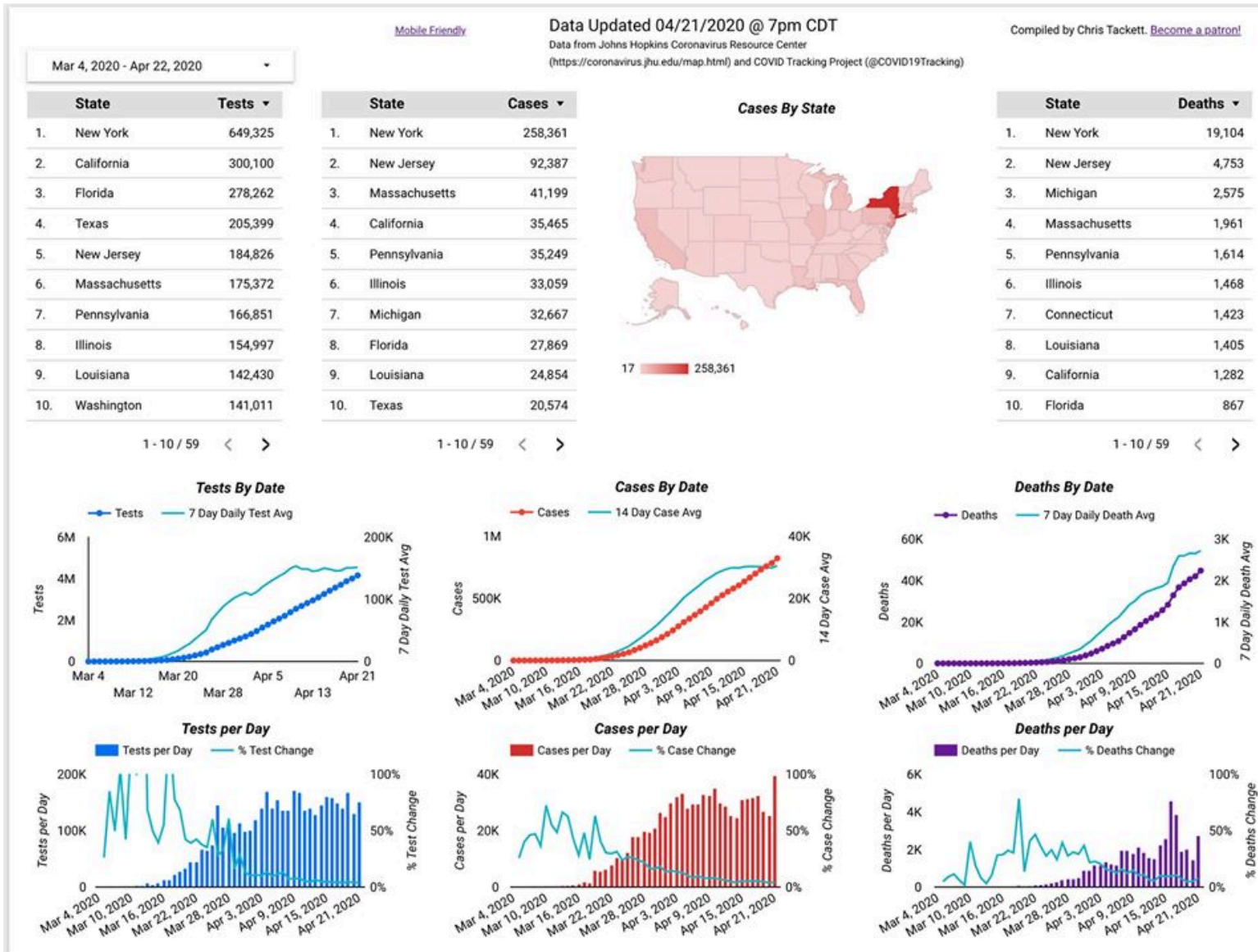
1 - 5 / 46 < >



Cases in the US

- 823,620 cases (+39,460)
- 44,843 deaths (+2,751)
- 4,159,049 tests (+151,546)

Testing per day is still a flat line over the past 7 days. Daily case numbers were up from yesterday, but a part of the spike was John Hopkins adding in the US Armed Forces, Federal Bureau of Prisons, and Veterans Hospitals.



States Per 100K Comparison

Texas is in 49th on Testing per 100k people with 708 tests per 100k.

We are 41st in Cases per 100k at 70.95, with a 10.02% positive rate, behind Kentucky and ahead of Oklahoma.

Texas is 41st in Deaths per 100k people at 1.84, with a 2.59% mortality rate, behind Oregon and ahead of Nebraska. I know it makes it a bit of an eye chart, but all states are on the chart so you can see the scale of where Texas lands.

US States COVID-19 per 100k in Population

[Mobile Friendly](#)

Data Updated 04/21/2020 @ 7pm CDT

Compiled by Chris Tackett.

Data from Johns Hopkins Coronavirus Resource Center

[Become a patron!](#)

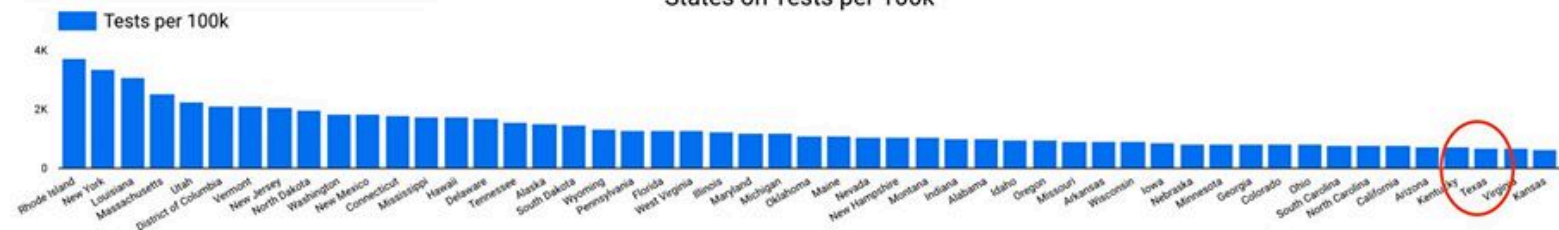
(<https://coronavirus.jhu.edu/map.html>) and COVID Tracking Project (@COVID19Tracking)

	State	Population	Tests	Tests per 100...	Cases	Cases per 10...	Positive R...	Deaths	Deaths per ...	Mortality ...
1.	Rhode Island	1,059,361	39,333	3,712.90	5,500	519.18	13.98%	171	16.14	3.11%
2.	New York	19,453,561	649,325	3,337.82	258,361	1,328.09	39.79%	19,104	98.2	7.39%
3.	Louisiana	4,648,794	142,430	3,063.81	24,854	534.63	17.45%	1,405	30.22	5.65%
4.	Massachusetts	6,949,503	175,372	2,523.52	41,199	592.83	23.49%	1,961	28.22	4.76%
5.	Utah	3,205,958	72,358	2,256.99	3,297	102.84	4.56%	32	1	0.97%

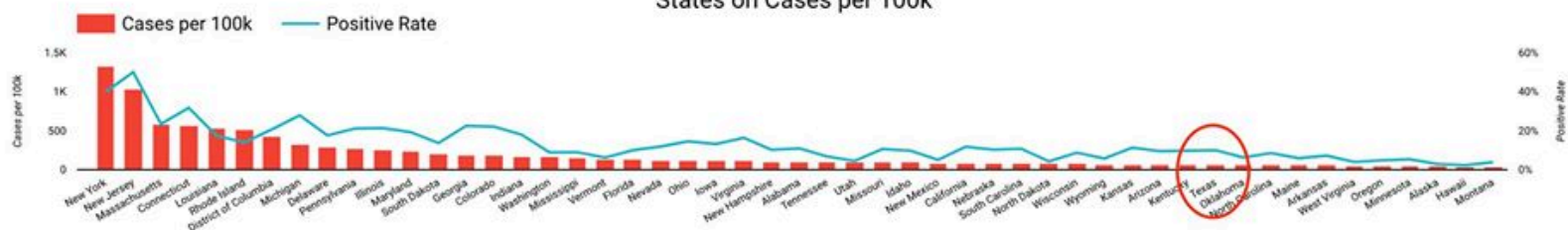
1 - 5 / 51 < >

State

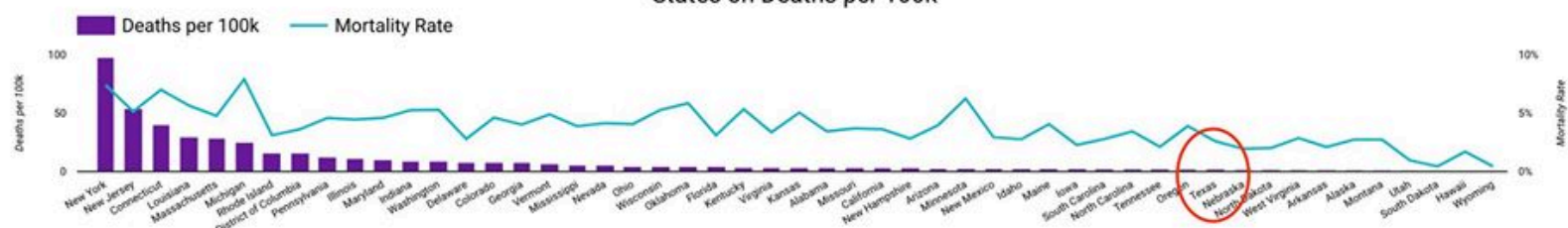
States on Tests per 100k



States on Cases per 100k



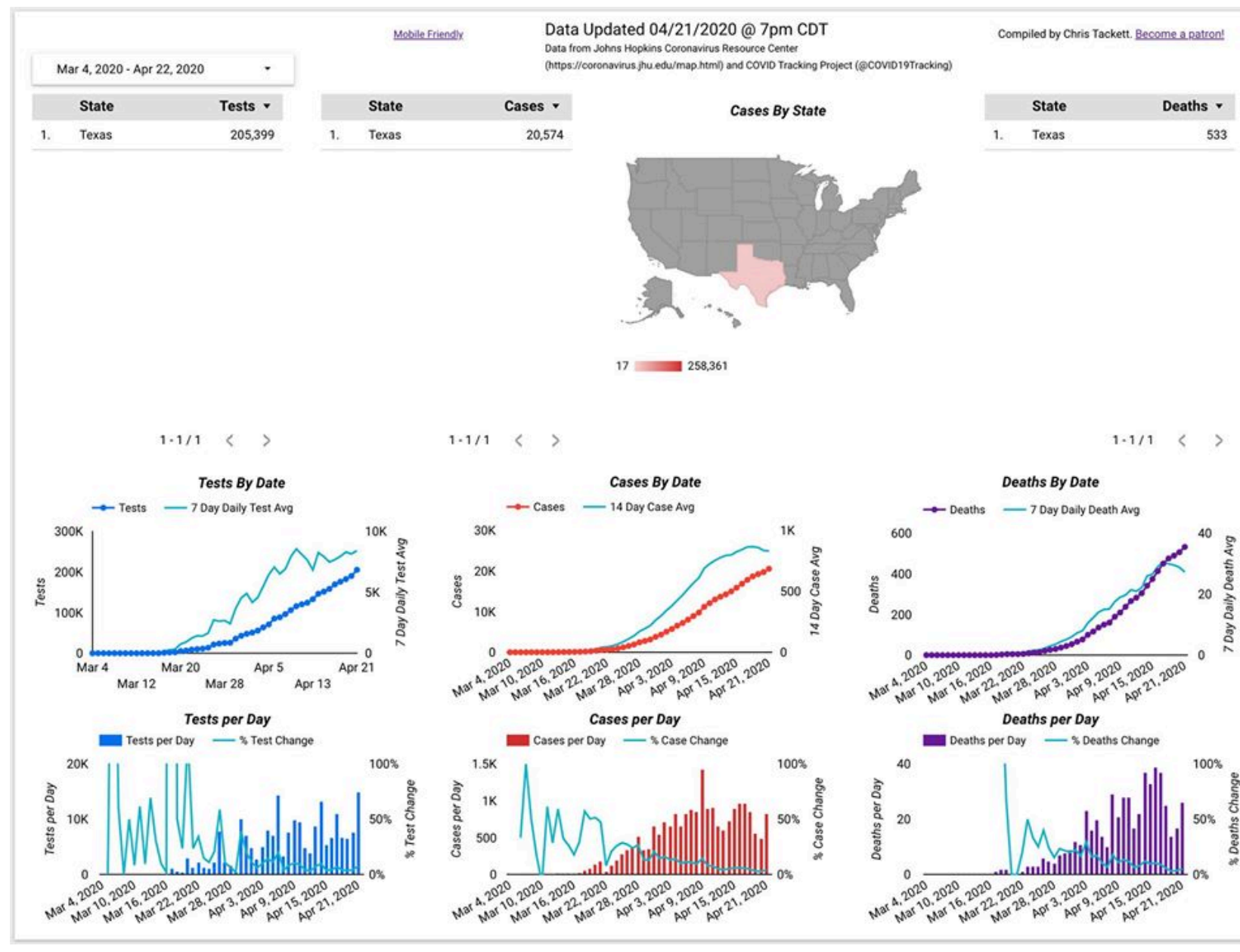
States on Deaths per 100k



Cases in Texas

- 20,574 cases (+823)
- 533 deaths (+26)
- 205,399 tests (+15,005)

Referencing the States per 100k and Texas: If you don't test, you don't find cases. If you don't find cases, you aren't counting the full numbers as deaths. Over the past 14 days, even with one of the most pathetic testing rates in the entire United States, Texas has averaged 832 cases every single day.



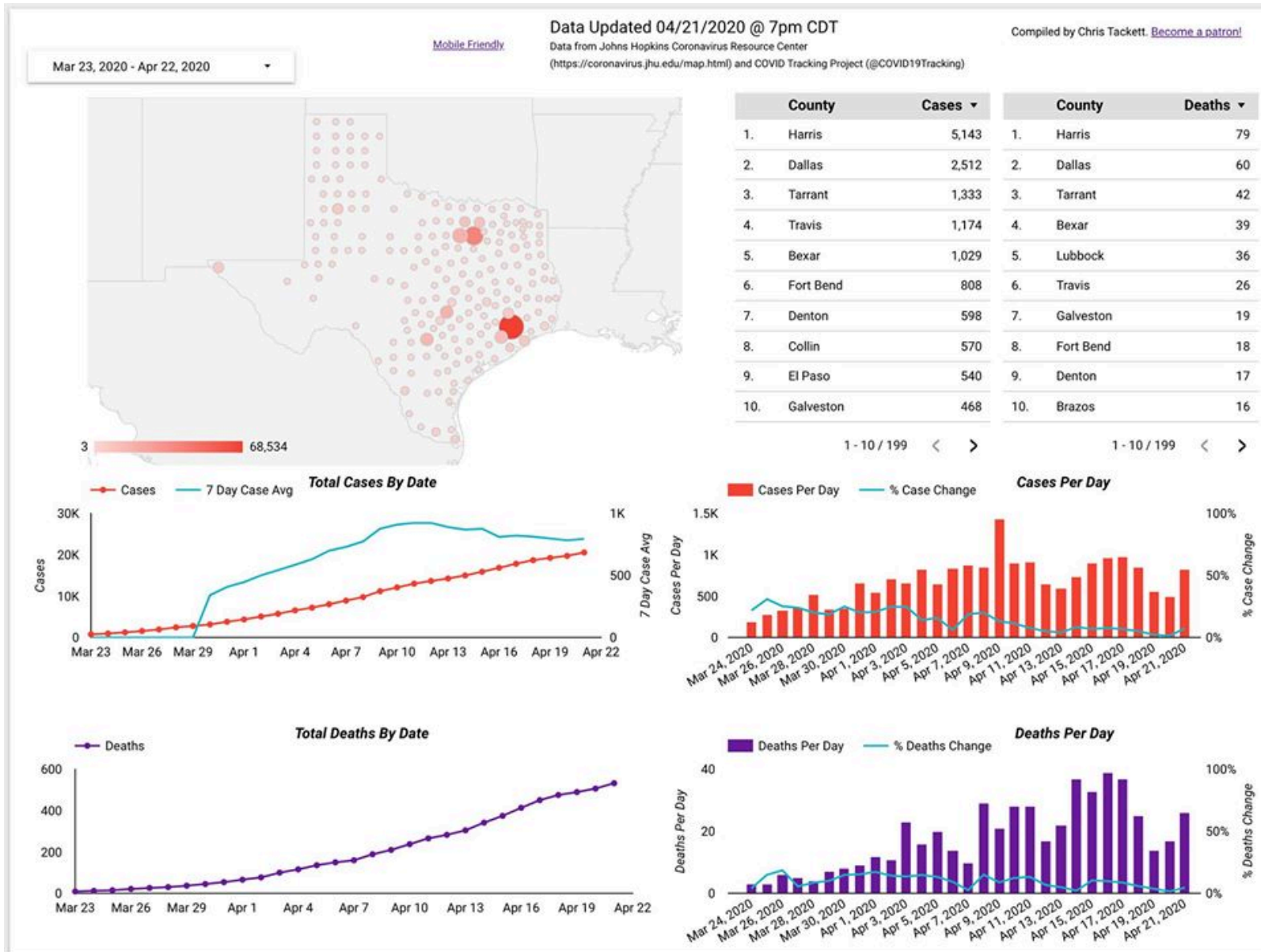
Cases by Texas Counties

The top five counties for counties are:

- Harris – 5,143
- Dallas – 2,512
- Tarrant – 1,333
- Travis – 1,174
- Bexar – 1,092

28 counties have 100+ cases, 101 have 10+, and 199 have at least 1 case.

13 counties have lost 10+ Texans, 77 have lost at least 1.



Texas Counties per 10K

Top 5 per 10k residents are Donley, Moore, Shelby, Panola, and Sherman.

The virus is all over the state, not just the big counties.

TX Counties COVID-19 per 10k in Population

[Mobile Friendly](#)

Data Updated 04/21/2020 @ 7pm CDT

Compiled by Chris Tackett.

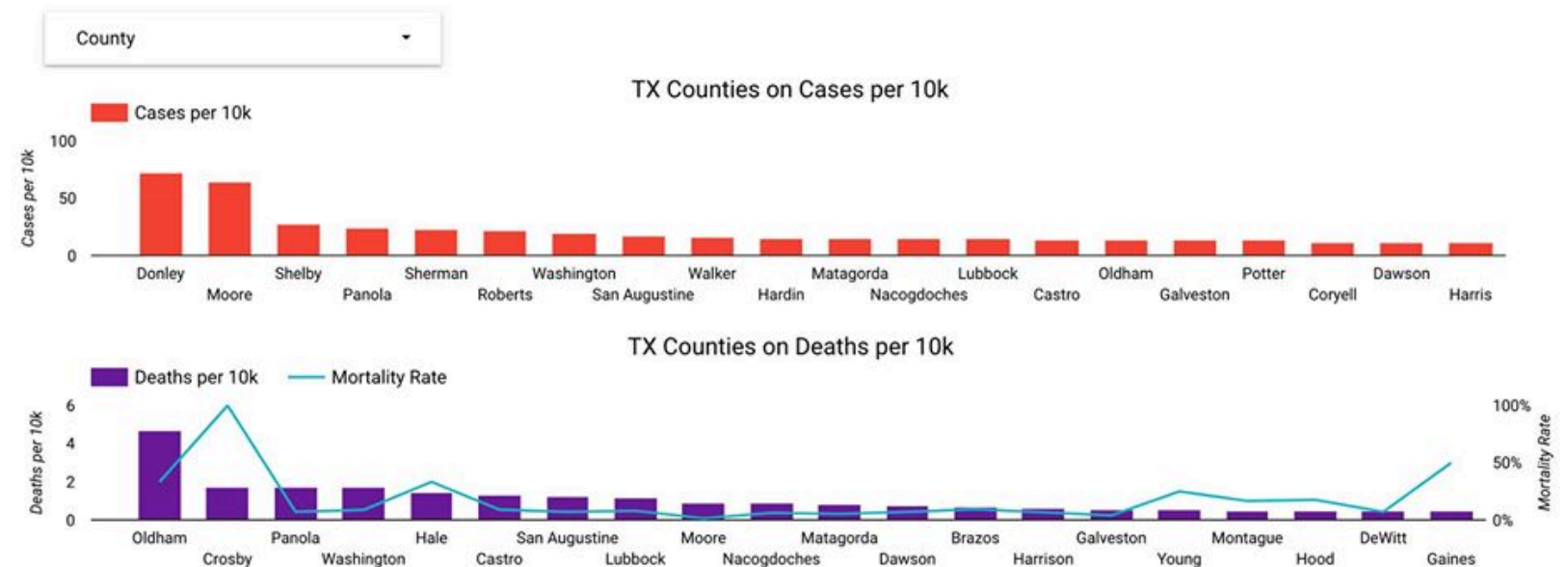
Data from Johns Hopkins Coronavirus Resource Center


[Become a patron!](#)

(<https://coronavirus.jhu.edu/map.html>) and COVID Tracking Project (@COVID19Tracking)

	County	Population	Cases	Cases per 10k ▾	Deaths	Deaths per 10k	Mortality Rate
1.	Donley	3,319	24	72.31	0	0.00	0%
2.	Moore	21,485	139	64.70	2	0.93	1.44%
3.	Shelby	25,418	69	27.15	0	0.00	0%
4.	Panola	23,148	55	23.76	4	1.73	7.27%
5.	Sherman	3,079	7	22.73	0	0.00	null
6.	Roberts	903	2	22.15	0	0.00	null
7.	Washington	35,108	68	19.37	6	1.71	8.82%
8.	San Augustine	8,232	14	17.01	1	1.21	7.14%
9.	Walker	72,480	114	15.73	0	0.00	0%
10.	Hardin	57,207	88	15.38	2	0.35	2.27%

1 - 10 / 254 < >





New mobile friendly version of the dashboards can be
found here: bit.ly/usccovid19mapm

Regular version (where the screenshots come from)
can be found here: bit.ly/usccovid19map.

Stay home if you can. Stay safe.