



Framed Florets Angled Side Treat Box

By Sherri Everett Bishop



All images copyright © 1990-2022 Stampin' Up! ®

Stampin' Up! Supplies Used:

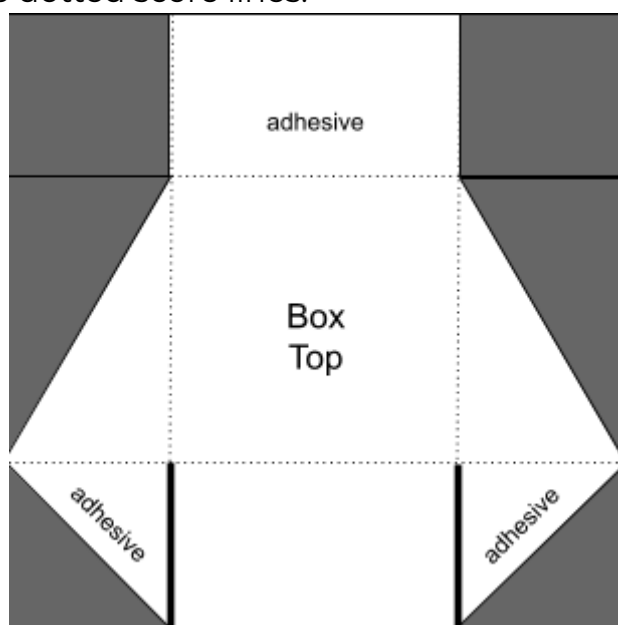
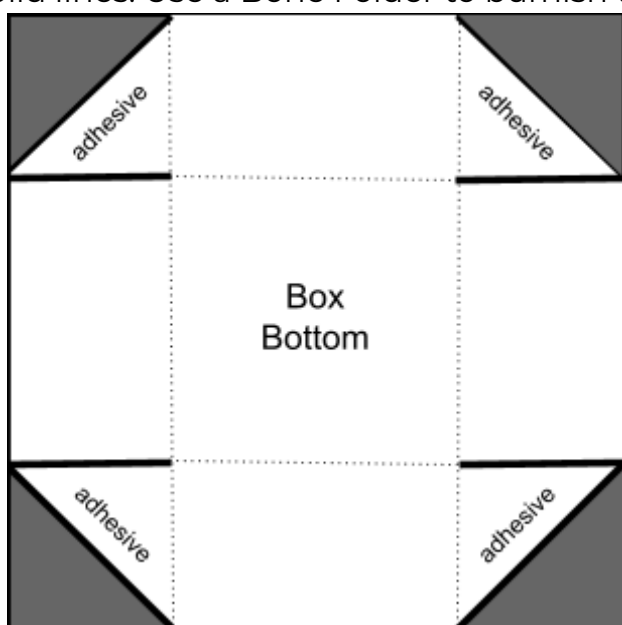
- Bundle: Framed Florets Bundle (162407)
- Inks: Night of Navy (147110), Polished Pink (155712), Memento Tuxedo Black (132708)
- Stampin' Blends Markers: Balmy Blue Combo Pack (154830), Evening Evergreen Combo Pack (155517), Polished Pink Combo Pack (155520), Soft Succulent Combo Pack (155521)
- Cardstock: Balmy Blue (146982), Basic White (159276), Blushing Bride (131198), Night of Navy (100867), Polished Pink (155710)
- Designer Paper: Fitting Florets DSP (161814)

- Accessories: Gold Adhesive-Backed Swirls (161822), Evening Evergreen 3/8" Open Weave Ribbon (155573), Soft Succulent 3/8" Open Weave Ribbon (155780)
- Tools: Multipurpose Liquid Glue (110755), Tear & Tape (154031), Stampin' Dimensionals (104430), Mini Glue Dots (103683), Paper Trimmer (152392), Bone Folder (102300), Take Your Pick Tool (144107), Stampin' Cut & Emboss Machine (149653)

INSTRUCTIONS:

1. For each box, you will need two coordinating colors of cardstock-a light shade and a dark shade. (I used Blushing Bride/Polished Pink and Balmy Blue/Night of Navy for my projects.) Cut two 7" squares of light cardstock. Score each of the squares at 1-3/4" on all sides. One piece will be the bottom of the box. The remaining piece will become the attached lid.

2. Refer to the diagram below. Use Paper Trimmer or scissors to cut along the bold, solid lines. Use a Bone Folder to burnish the dotted score lines.



3. After cutting and scoring along designated lines, assemble box. Use Multipurpose Liquid Glue or Tear & Tape. Adhere cardstock and DSP to the tops and sides of the boxes. The "flap" on the box top will be adhered on the outside of the box.

4. From dark cardstock, cut a 3-3/8" x 3-3/8" square and three 1-5/8" x 3-1/4" rectangles. Die-cut a frame using the Framed Florets Dies.

5. From DSP, cut a 3-1/4" x 3-1/4" square and three 1-1/2" x 3-1/4" rectangles. Adhere each piece of DSP to one of the pieces of dark cardstock. Adhere these panels to the top and three sides of the box, as shown.

6. Adhere the dark cardstock frame to the top of the box with Multipurpose Liquid Glue.

7. Stamp sentiment on a scrap of Basic White cardstock with coordinating ink (Polished Pink or Night of Navy.) Die-cut using the Framed Florets Dies. Fold approx. 12" of ribbon into a "z" shape and adhere to the back of the sentiment with Tear & Tape. Adhere sentiment and ribbon to top of box with Stampin' Dimensionals.

8. Stamp flower images on scrap of Basic White cardstock with Memento ink. Allow to dry completely, then color with Stampin' Blends Markers. Die-cut with Framed Florets Dies and adhere to sentiment with Stampin' Dimensionals.

9. Use the Take Your Pick tool to add adhesive-backed swirls.

