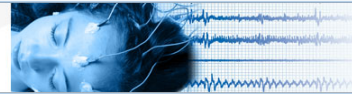




We help the world breathe®
PULMONARY • CRITICAL CARE • SLEEP

The Assembly on
*Sleep & Respiratory
Neurobiology*



2018 ATS International Conference San Diego, CA May 18th -23rd, 2018

Assembly on Sleep and Respiratory Neurobiology Assembly Chair, Sanjay Patel, MD

"Our Assembly focuses on research questions associated with respiration during sleep including the control of breathing and disorders related to sleep and breathing with a substantial focus on obstructive sleep apnea. We aim to translate this research into improvements in the prevention, diagnosis, and treatment of obstructive sleep apnea and related disorders. This includes advocating with stakeholders on behalf of patients to ensure access to the best evidence-based care."

Dental Sleep Medicine Interest Group Chair: James E. Metz, DDS

The goal of the Interest Group is to bring together dentists with a strong interest in dental sleep medicine and align them with the ATS Assembly on Sleep, Respiratory, and Neurobiology (SRN), so that they may discuss common interests that will benefit patients worldwide. The Group's objectives are as follows: To further identify research priorities and outcome studies in the area of oral appliances and collaborate with the SRN in the development of joint statements that will benefit the sleep community.

ATS Interest Group Meeting on Dental Sleep Medicine Manchester Grand Hyatt San Diego – Balboa BC (Second Level - Seaport Tower) Sunday, May 20 - 5:30-8:30 p.m. (6:30 Reception)

- 5:30 PM – Reception
- 5:45 PM – **David A. Schwartz, MD** - Idiopathic pulmonary fibrosis (IPF) & what is known about environmental risk factors
- 6:00 PM – **Randall J. Nett, MD, MPH** - Cluster of dentists who have developed Pulmonary Fibrosis
- 6:30 PM – **Teresa Barnes** - Patient engagement & advocacy
- 7:00 PM – **Olivier M. Vanderveken, MD, PhD** - The lingual tonsil in OSA patients
- 8:00 PM – General discussion including planning for ATS 2019, May 17-22, Dallas, Texas
 - Organizational Committee for 2019 Conference
 - Distribution of Flyer – Give to your colleagues
 - Increasing attendance – Getting the message out
 - Focus of supported research – Group data collection
- 8:30 PM – Conclusion and networking afterwards