

# *Supporting Rural America:* Rural Health Resiliency

*Laura Kreofsky, MHA, MBA  
Director, Rural Health Resiliency  
Microsoft Philanthropies  
[lkreofsky@microsoft.com](mailto:lkreofsky@microsoft.com)*

*DATE: March 13, 2025*

# Microsoft Corporation

Microsoft Philanthropies (CELA)

## Tech for Social Impact

Rural Hospital  
Resiliency

Campaign &  
Election Integrity

Cyber  
Disinformation

# Pillars of Microsoft's Investments in Rural America

## Airband

Broadband Expansion

## Tech Spark

*Training and Jobs*

## AI Skilling

*Training and Jobs*



## Rural Health Resiliency

Cybersecurity Program for  
Rural Hospitals



Strategic cybersecurity  
solutions and services

Rural Health AI Lab  
("RHAIL")



AI innovation for  
rural health



Did you get “The Letter?”



# The Change Healthcare Hack Timeline

Feb '24



Oct '24



Forever...

July '24



Jan '25



# THE HEALTHCARE CYBER LANDSCAPE

---



**TOP 3**

INDUSTRY IMPACTED BY  
CYBERSECURITY ATTACKS



**130%**

SURGE IN HOSPITAL  
RANSOMWARE ATTACKS IN  
PAST YEAR



**2,000**

CLINICS, HOSPITALS &  
HEALTHCARE ORGS HIT BY  
CYBER ATTACKS ANNUALLY



**70%**

OF HEALTHCARE CYBER  
ATTACKS ARE ON  
SMALLER  
ORGANIZATIONS



**20%**

INCREASE IN MORTALITY  
AFTER A CYBER ATTACK



**100M**

PATIENT RECORDS  
AFFECTED IN A SINGLE  
DATA BREACH IN 2024



**80%+**

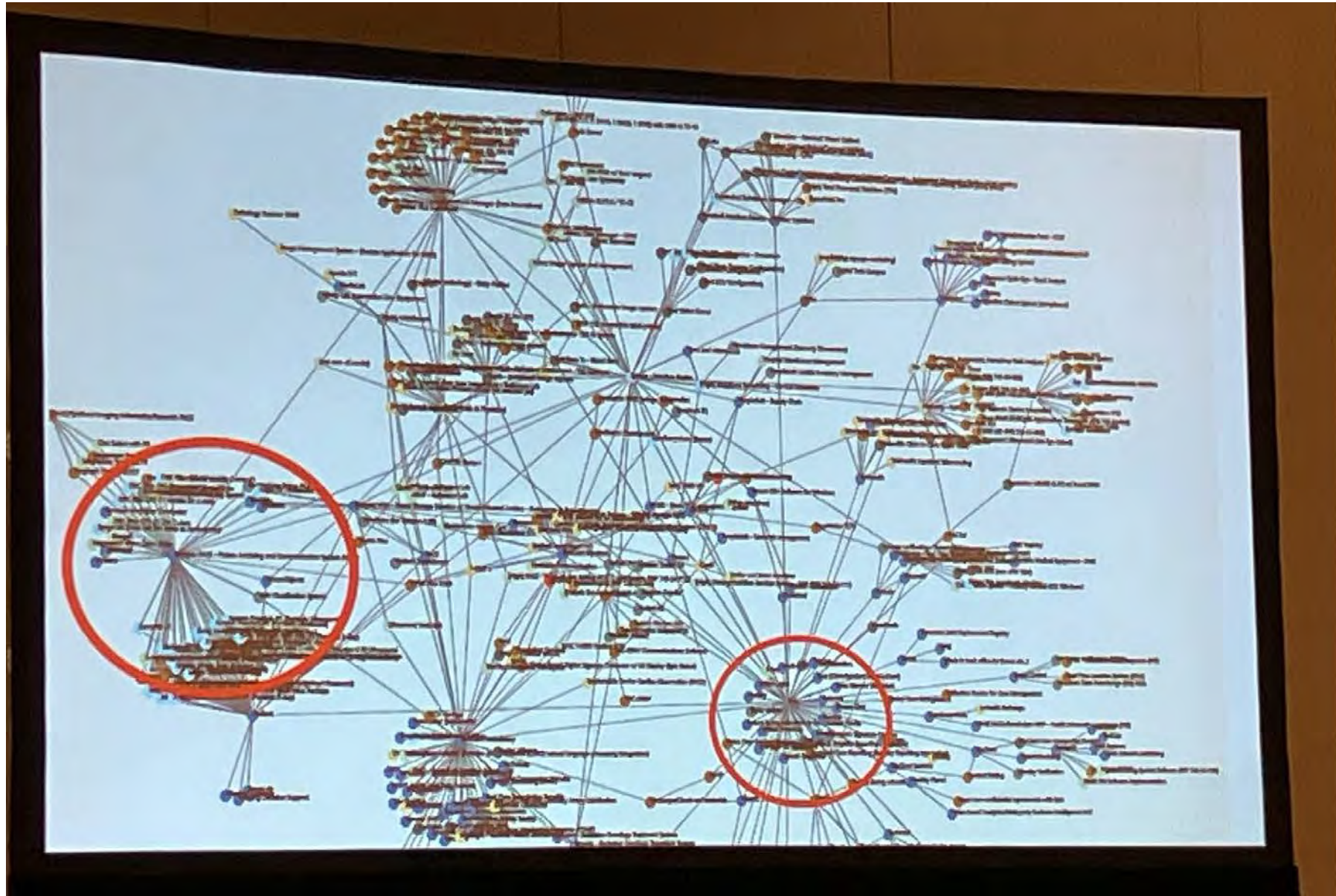
ATTACKS DUE TO  
HUMAN ERROR



**\$10M**

AVG COST OF  
HEALTHCARE DATA  
BREACHES IN 2024

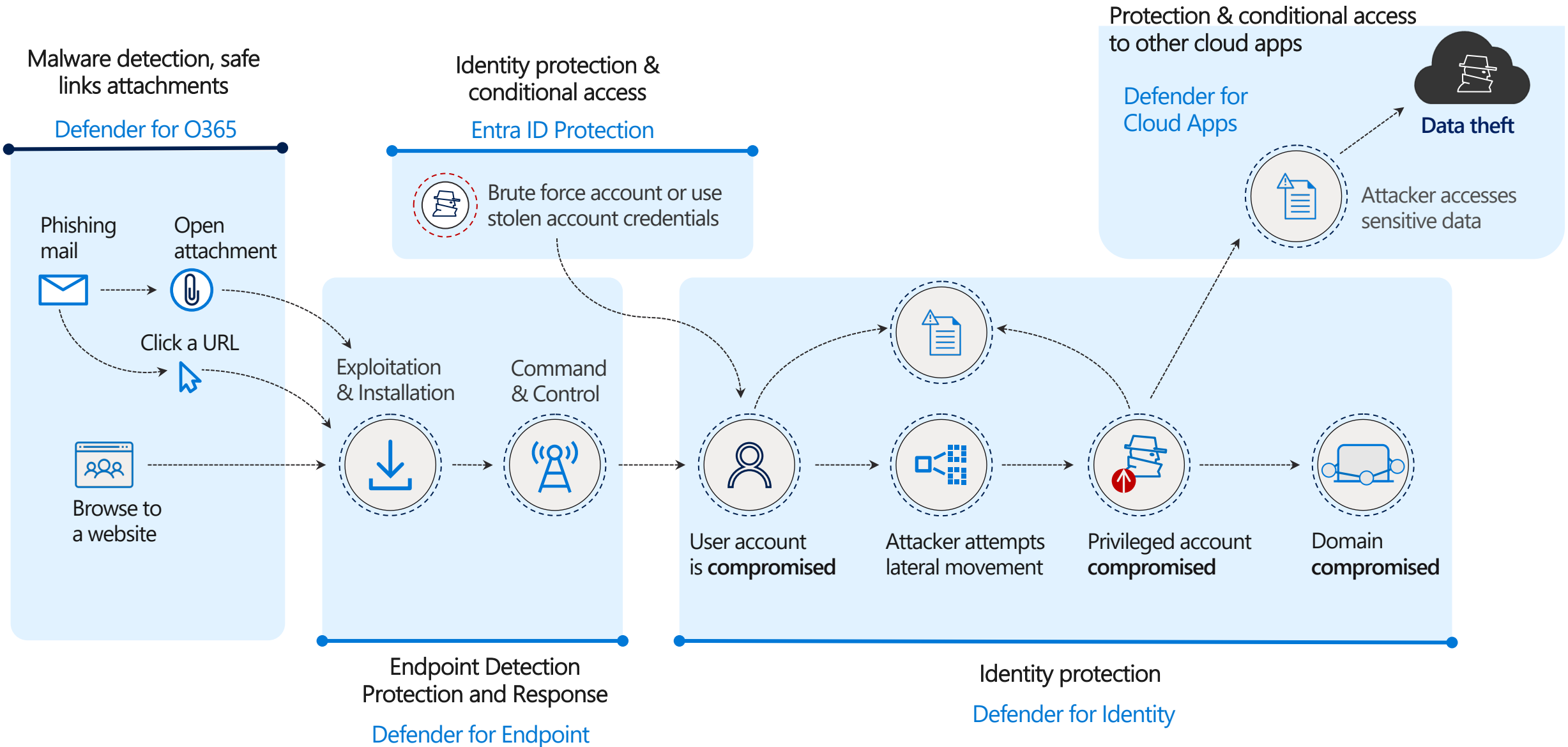
# WHAT COULD POSSIBLY GO WRONG?



Source: John Riggi, American Hospital Association National Director Cybersecurity and Risk



# CYBER ATTACKS HAPPEN...





# Cybersecurity is not an “IT Thing”

A 2020 cyberattack on a **large academic health system**, attributed to malicious software embedded in an **email attachment** opened by an **employee**, affected more than **5,000 end-user devices** and 1,300 servers and led to revenue losses of more than **\$63 million**.

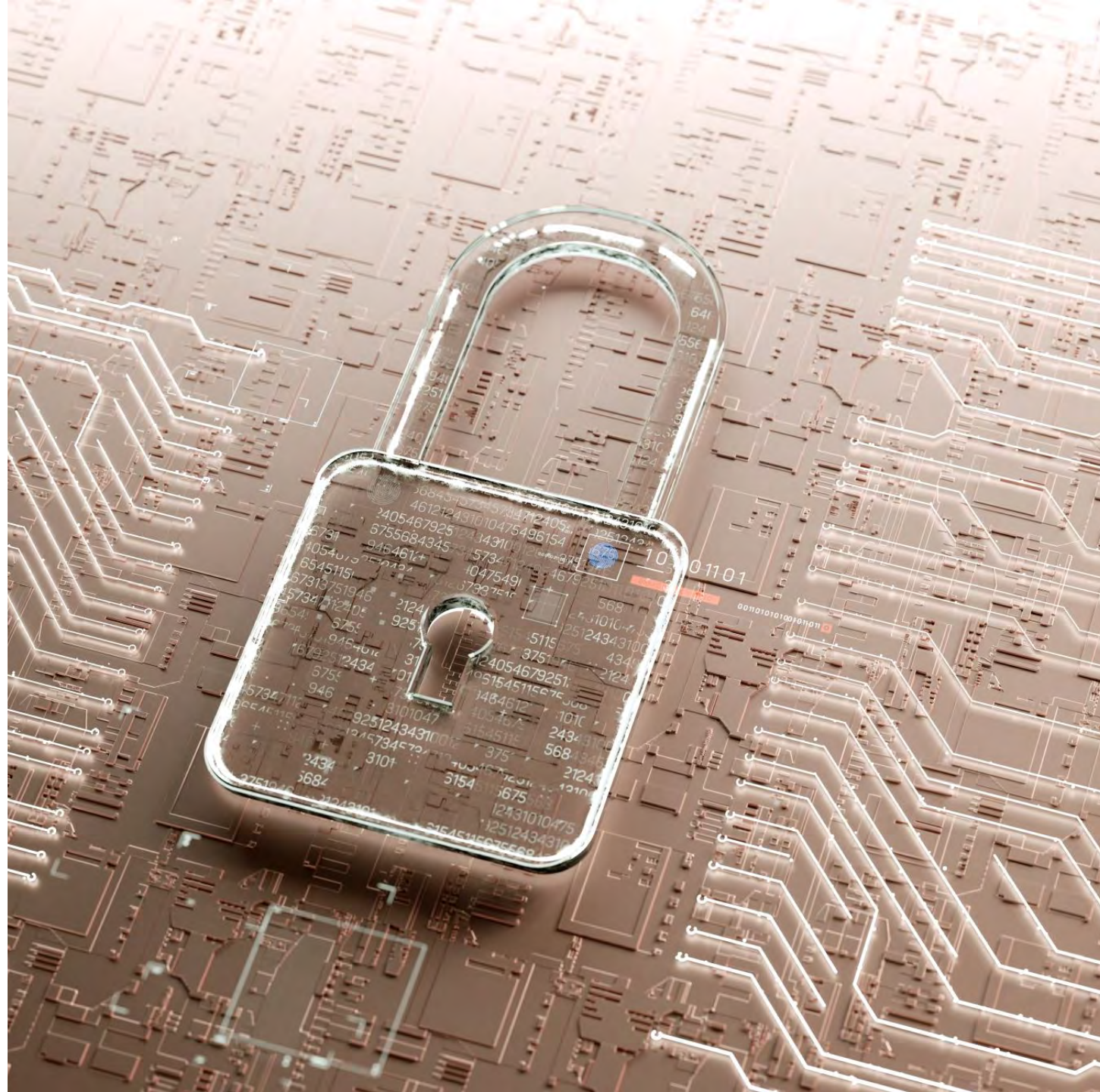
**Victims of medical identity** theft incur on average costs of **\$13,500** to recover from that theft, according to a study funded by the Institute for Critical Infrastructure Technology

*“At least in part because of **senior management’s** lack of cybersecurity awareness, **many fail to invest or fail to invest appropriately** in cybersecurity infrastructure.”*

## **“Small and Rural Health Care Providers Must Implement Strong Security Measures To Provide Efficient and Effective Health Care”**

*“Patients and communities have a critical need for health care providers...to be resilient and remain operational, which depends in part on the cybersecurity of their electronic information systems.”*

*The “HIPAA Security Rule to Strengthen the Cybersecurity of Electronic Protected Health Information” Notice of Proposed Rule was issued Dec 27, 2024. It was archived from the HHS website in early February 025*



# (Black & White) Insights from the Proposed Cybersecurity Rule...

1. The use of **antiquated hardware, systems, and software** by hospitals is concerning. 96% of hospital claim using end-of-life operating systems or software with known vulnerabilities, which is inclusive of medical devices
2. Only 49% of hospitals have adequate coverage in **managing risks to supply chain**. These risk rates as the third most important threat among 288 healthcare CISOs
3. Healthcare is rife with Asset Management deficiencies. **39% of hospitals don't have organizational data flows** and communication mapped and only 47% have external systems adequately catalogued



# The Microsoft Cybersecurity Program for Rural Health

**Microsoft**, the **American Hospital Association**, and the **National Rural Health Association**, with support from **The White House** formed an unprecedented partnership committed to improving the security of all rural hospitals across the United States.

## Assessments



- **Free cybersecurity assessments** to evaluate security risks and identify an action plan to protect the organizations
- Anchored in **health sector best practices** and cyber performance goals

## Training



- **Free cybersecurity awareness training** resources for frontline staff to reduce risks and increase vigilance
- Foundational **cyber certification** and resources for IT staff in security and compliance roles

## Affordability



- **Nonprofit pricing** for independent Critical Access and Rural Emergency Hospitals
- New licenses of the advanced E5 security product **free for 1 year** for other rural hospitals
- Free **Windows 10 Extended Security Update** (Summer 2025)



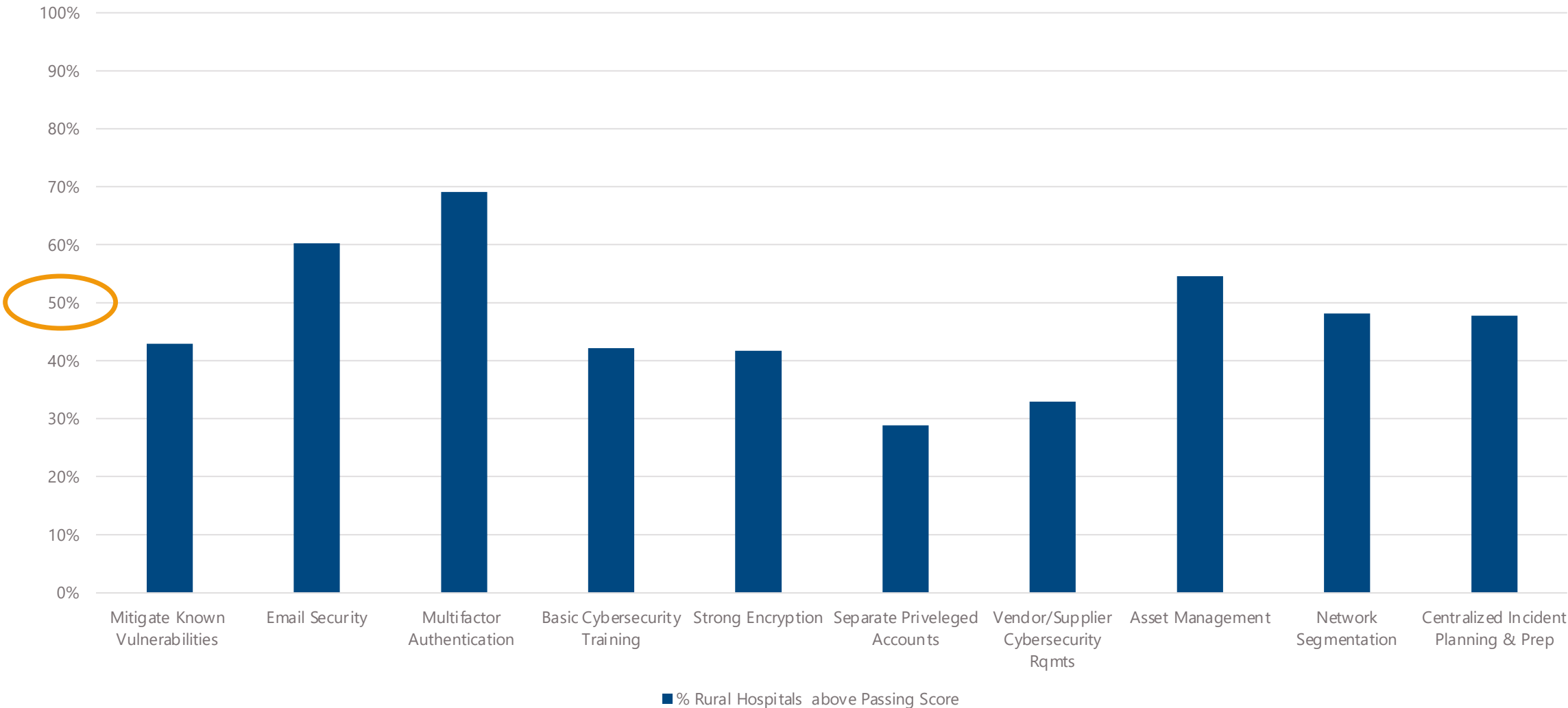
# MS PROGRAM: FREE CYBER RISK ASSESSMENT



Roadmap									
Findings	Recommended Activities	FY24		FY25				FY26	
		Q3	Q4	Q1	Q2	Q3	Q4	Q1	Q2
Separating User and Privileged Accounts	Implement the principle of least privilege and separation of duties.								
	Regularly test a plan to validate that privilege elevation processes takes place only when additional access is temporarily needed.								
Pen-Testing	Work with an external penetration testing provider to schedule an annual penetration test to compliment the CISA external vulnerability scanning								
	Document findings from penetration test and address them where possible. When not possible, have asset owner accept risk								
Vendor Auditing	Creating a documented policy of standards and practices for third party vendors, and establish a system to re-evaluate policy								
	Create a vendor notification policy to advise a vendor when their equipment, modality, or software has a vulnerability discovered or is involved in a cybersecurity incident.								
Training and Education	Implement regular training schedule as well as quantifiable training for all employees. Track results and report to IT & hospital management. Observe results after cybersecurity awareness campaigns to see effects								
	Adapt training to specific roles and further develop other methods to reinforce cybersecurity awareness, including posters in strategic places, newsletters								

# Cybersecurity Resilience: Across the Board Challenges

Percent of Rural Hospitals with a "Passing Score" based on Cyber Expert Opinion



# MS PROGRAM: FREE TRAINING & PRODUCT DISCOUNTS

The screenshot shows the Microsoft Cybersecurity Program for Rural Hospitals website. At the top, the Microsoft logo is on the left, and a photo of healthcare workers in a training session is on the right. Below the photo, the text 'Cybersecurity skilling for rural hospitals' is displayed. The main content area is divided into three sections: 1. 'Microsoft Cybersecurity Program for Rural Hospitals' with a description of the program's goal to protect patient care and data, and a 'Learn More' button. 2. 'Ensure frontline workers understand cybersecurity basics' with a grid of six topics: 'Get your team started with the free Microsoft Learn Path, Essential cybersecurity awareness for healthcare staff', 'Basic cybersecurity threats, attacks, and mitigations', 'Authentication and authorization in cybersecurity', 'Device-based threats and security controls', 'Application-based threats and how to protect against them', and 'Securing you: Basics and beyond'. 3. 'Certification and advanced skilling for IT staff' with a flowchart showing three steps: 1. 'Cybersecurity threat landscape', 2. 'Cybersecurity terminology', and 3. 'Cybersecurity foundations'. The flowchart leads to a box titled 'Advanced skilling' which lists 'Complete additional learning paths' including 'Microsoft security documentation' and 'Microsoft 365 security and compliance capabilities'. A badge on the left of the flowchart says 'Earn your free career essentials certificate in cybersecurity'.

## Nonprofit Pricing\* for Independent CAHs and REHs includes

- MS 365 Business Premium
- MS 365 E3
- MS 365 F3
- Power BI Desktop
- Power BI Pro
- Azure
- Power Apps
- Dynamics



\* FQHCs and RHCs are also eligible

## All Other Rural Hospitals are Eligible for...

The Microsoft E5 Security add-on, which can be integrated with Microsoft 365 E3 to provide advanced security, threat protection, compliance features, and analytical tools.

The Microsoft Cybersecurity Program for Rural Hospitals: [Program Registration Link](#)



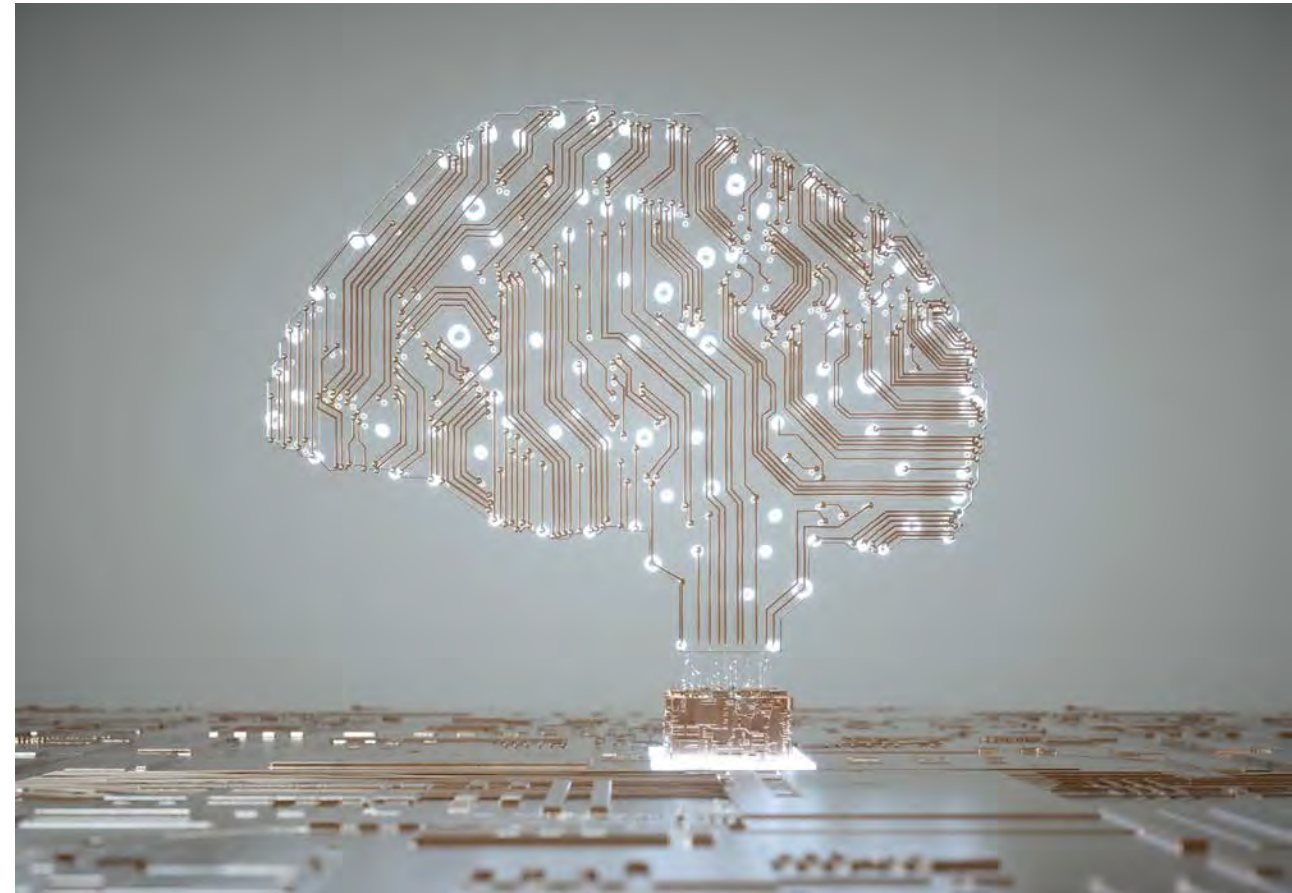
# AI in Support of Rural Health





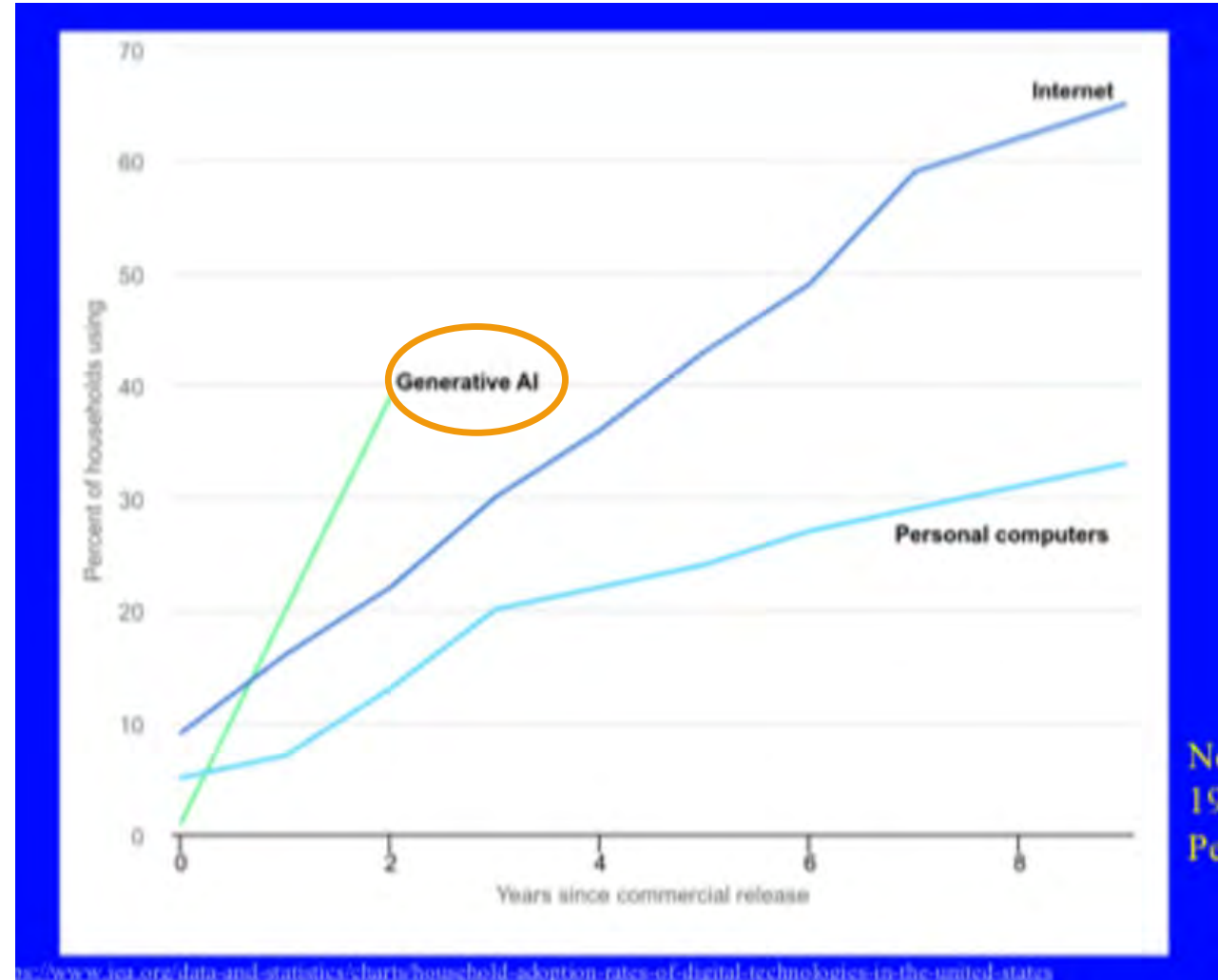
# Understanding Generative AI, OpenAI, and Microsoft Copilot

- **Generative AI** “learns” from existing information to create new content.
- **OpenAI and Deepseek** are organizations developing AI models.
- **Microsoft Copilot and ChatGPT** integrate AI to enhance productivity tools



# AI: The 4th Industrial Revolution

- Use of generative AI **nearly doubled** in six months (MS/LinkedIn 2024 Work Trend Index)
- Heartland Forward's AI poll across AL, IL, IN, LA, MI, ND, OH, OK and TN found:
  - **79%** of respondents believe AI has potential to make a positive difference in health care.
  - **64%** want AI training in the workplace, indicating a willingness to embrace AI through education and training.



Source: Jamie Orlikoff/AHA 2025 Rural Health Leaders Conference

# AI in Rural Health

Artificial intelligence supports our decision making and activities

## Clinical Services

- **Access to Care:** AI-powered virtual care, remote consults and chronic condition monitoring
- **Decision-Making:** support timely, accurate diagnosis and clinical actions
- **Resource Allocation:** identify high-risk patients, allocate resources and streamline workflows

## Administrative Burden

- **Ambient-listening** to ease documentation time
- **Scheduling** of staff, patients, ORs, etc.
- **Billing and coding** accuracy and efficiency
- **Denials Management**
- **Grant** identification and writing



[Image Source: Cleveland Clinic](#)

# RHAIL: Fostering AI Innovation for Rural Health

Microsoft launched the **Rural Health AI Innovation Lab** (RHAIL) to collaborate with rural customers in developing innovative AI solutions for rural health's challenges

- The goal is to drive technology advancement, financial performance and address health disparities unique to the patients and communities served by Rural Health
- Use Cases identified and framed by the voice of the customer
- Aligned with Responsible AI practices and principles
- "Low Code/No Code" to build
- Affordable and accessible
  - Tools put on GitHub to access for free



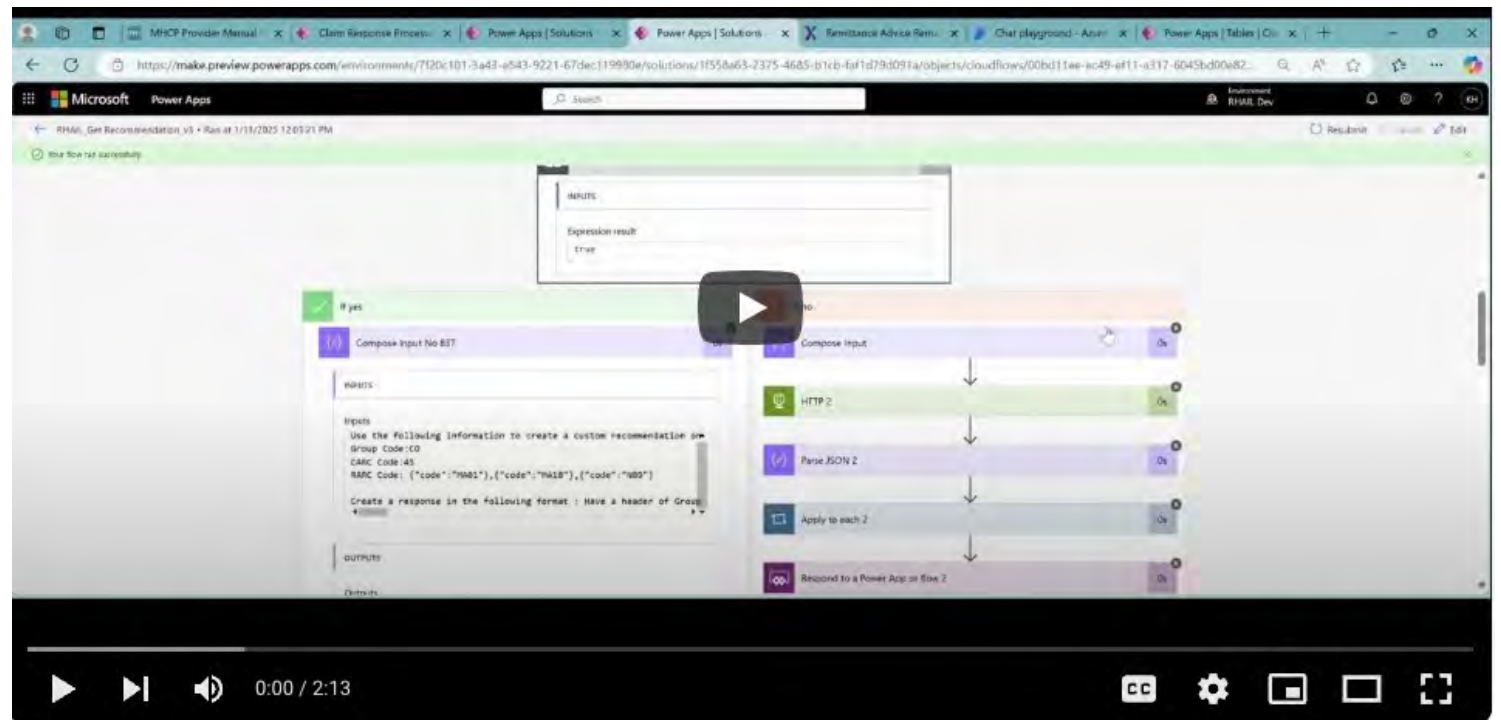
By starting small, we  
can have a big impact



# RHAIL IN ACTION

The Initial Rural Health AI Cohort aligned on addressing the laborious but critical task of researching and resolving denied Medicare, Medicaid and Commercial Insurance claims

- *Hospitals spend almost \$20B annually appealing denials.*
- *HHS' Office of Inspector General (OIG) found that 75% of care denials were subsequently overturned.*
- *Hospitals are not paid for the costs incurred to navigate the burdensome and resource-intensive process.*



<https://www.youtube.com/watch?v=FkPDbBSOiKQ>

# RHAIL #2: The Referral Router

**Outbound referrals for specialized care in rural healthcare systems are disproportionately challenging due to:**

- Manual, opaque, and inconsistent processes
- Limited specialist availability
- Logistical constraints
- Insurance complexities
- Poor patient communication mechanisms

**Impact:** impeded/delayed care, patient outcomes, patient/provider satisfaction, and revenue leakage

**The AI-enabled “Referral Router” will address the front-end referral process to:**

1. **Improve Patient Care:** Faster access to specialists and better outcomes.
2. **Enhanced Experience:** Simplify and clarify the referral process.
3. **Increase Operational Efficiencies:** Reduce staff burden of scheduling and follow-ups.
4. **Minimize Leakage:** Keep patients within the rural system for ongoing care.

ETA Fall 2025

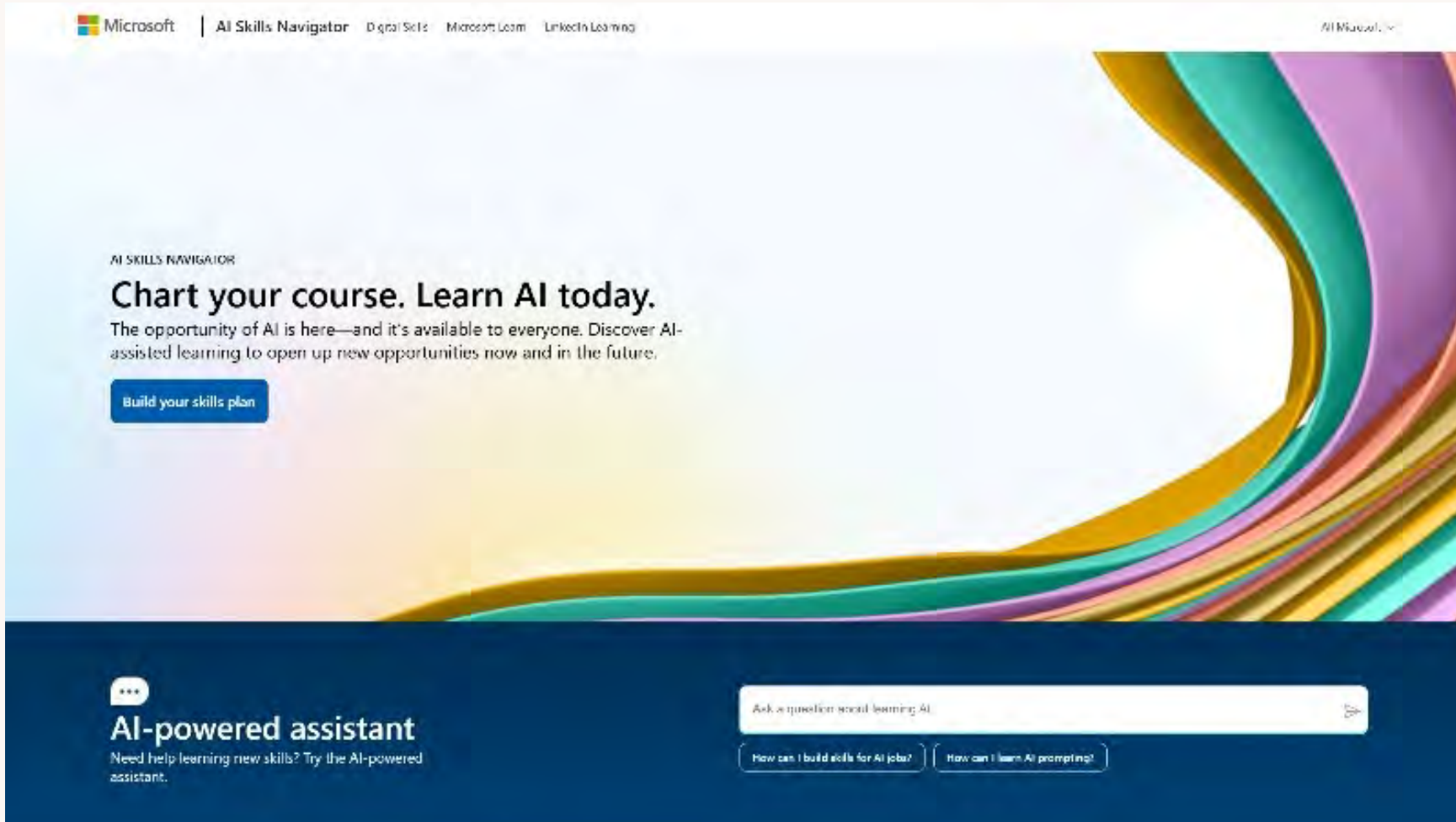
If you do only One Thing after today's session

**YOUR**  
Expanding opportunity with AI skills

[Aka.ms/AISkillsNavigator](https://Aka.ms/AISkillsNavigator)

# AI Skills Navigator landing page

- 1 New AI-powered assistant helps learners find their best path to AI skills
- 2 Assessment to find the right starting point
- 3 Access breadth of learning pathways



## Build your skills plan

Tell us a little about yourself to get personalized resources.

02:20 PM

How are you hoping to leverage AI?

[I want to use AI to boost my productivity.](#)

[I want to build AI solutions or leverage its power to solve complex problems.](#)

[I want to harness AI to drive business transformation.](#)

[I want to train others to leverage AI.](#)

02:20 PM

To learn AI prompting, you can follow these steps and utilize the resources available:

1. Start with the Basics:

- Learn the core concepts of Artificial Intelligence and generative AI functionality. This will provide a solid foundation for understanding how AI prompting works.

2. Explore Generative AI Tools:

- Familiarize yourself with currently available generative AI tools and their impacts. This includes understanding the ethical considerations when using these tools.

AI-generated content may be incorrect

Ask a question.





# RESOURCES



# Rural Health Resiliency Webinar Series

A Free Webinar Series to help rural health (IT) Leaders learn and develop new skills



## **The Rural Health Cyber Landscape**

March 19, 1:00 PM–1:40 PM ET



## **Best Practices in Identity and Access Management using Microsoft Entra ID**

June 11 1:00 PM–1:40 PM ET



## **Supporting Rural Health through AI Innovation**

September 10, 1:00 PM–1:40 PM ET



## **Next level innovation for rural health: A CIO's real-world example**

April 9, 1:00 PM–1:40 PM ET



## **What I learned from my CAH's Cyber-attack: Best Practices in Incident Response**

July 9, 1:00 PM–1:40 PM ET



## **Security Transformation is Cloud Transformation**

October 8, 1:00 PM–1:40 PM ET



## **Understanding the security features of Microsoft Business Premium, E3, and E5**

May 14 1:00 PM–1:40 PM ET



## **Best Practices in Endpoint Management using Microsoft Intune**

August 13, 1:00 PM–1:40 PM ET

**Register for the series [here!](https://nonprofits.tsi.microsoft.com/EN-US/rural-hospital/)**

<https://nonprofits.tsi.microsoft.com/EN-US/rural-hospital/>

# The Rural Health Community

## BACKGROUND:

The national **Rural Health Community** is a dedicated forum for Rural Health IT leaders to connect, share solutions, best practices and drive innovation for rural health. It was founded in 2024 by rural health CIOs, CHIME - the digital health leaders association - Microsoft and Nordic.

## OBJECTIVES:

- ✓ **Advocate as a voice to the private and public sector** in support of tech needs of rural healthcare
- ✓ Provide access to/establish innovative programs and **cost-effective solutions** for rural health.
- ✓ **Foster relationships and collaboration** among rural health IT teams.

## JOIN THE COMMUNITY!

*E-mail to join the mailing list*  
**[Info@RuralHealthCommunity.org](mailto:Info@RuralHealthCommunity.org)**

It's free to join/be a member  
(and we won't spam you/sell your info)

# Rural Health Resources

- [Microsoft Cybersecurity Program for Rural Hospitals](#) – register here for access the Assessment, Training and Licensing Offers.
  - [Nonprofit Offers Registration](#)
  - [Cyber Awareness Education](#)
  - [Cyber Essentials Certification Course](#)
- Rural Cyber Webinar Series: *Coming Soon. Register above to be informed of topics and schedule*
- Join the national [Rural Health IT Community](#)

Contact the Microsoft Rural Health Team  
with questions or feedback: [MRHTP@Microsoft.com](mailto:MRHTP@Microsoft.com)



# AI Resources

## Users/Staff



**LinkedIn Learning** offers pathways to for those using generative AI in their jobs and daily lives

- [LinkedIn Generative AI Pathway](#)
- [LinkedIn Productivity with GenAI Learning Pathway](#)
- [Digital Skills Compass](#)
- [LinkedIn CoPilot for Productivity Pathway](#)
- [AI fluency content](#)

## Organizational Leaders



**LinkedIn Learning** supports decision makers responsible for managing adoption of generative AI and integrating it into workflows

- [LinkedIn AI for Organizational Leaders Learning Pathway](#)
- [LinkedIn AI for Managers Learning Pathway](#)
- Learn AI collection for business leaders

## AI Learning Hub



The Microsoft AI Learning Hub offers curated learning journeys to support business and technical staff in building AI skills.





Thank you!