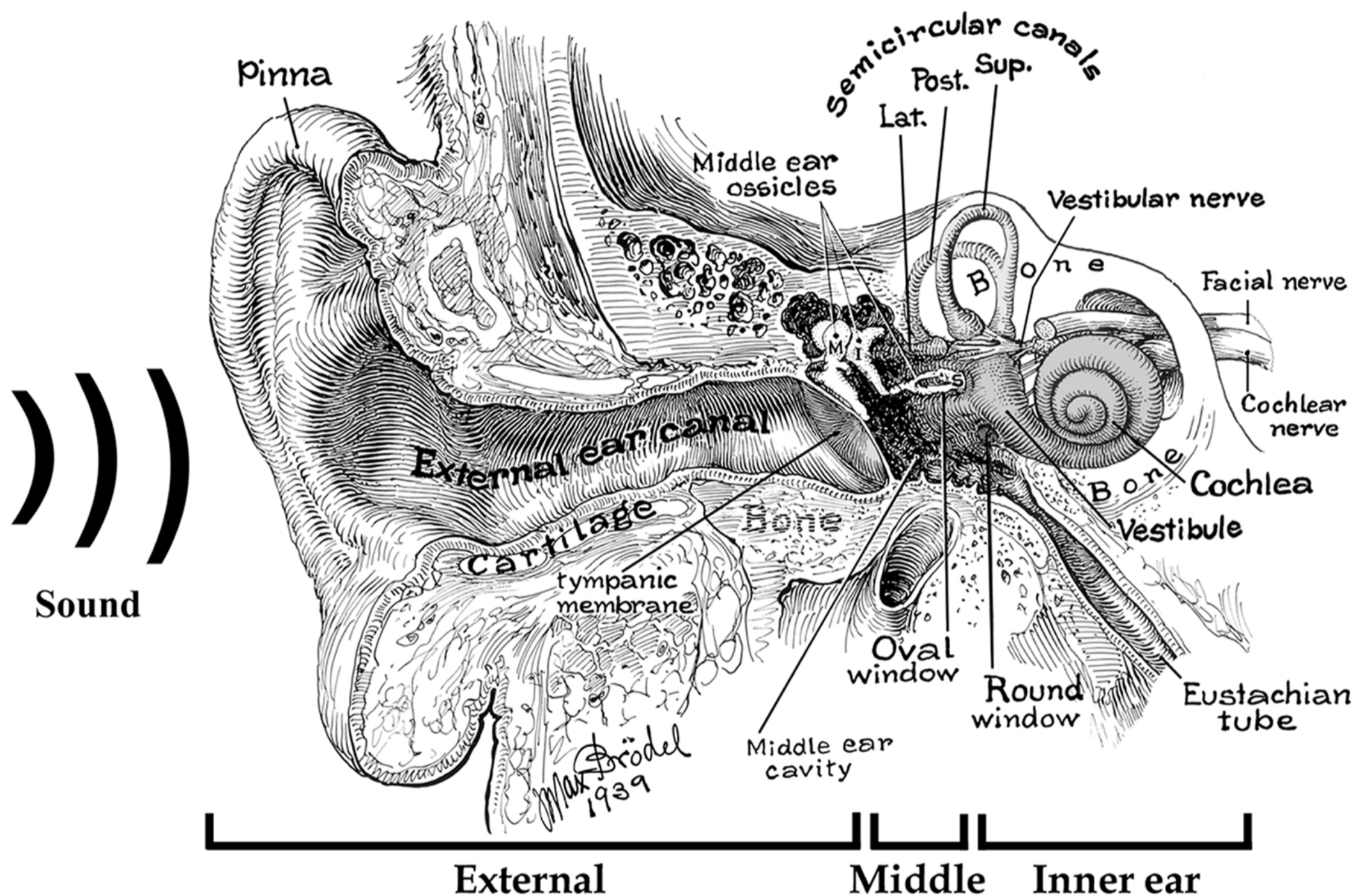


THE ART OF HEARING



Schematic image of the peripheral hearing apparatus, based upon a pen and ink drawing by Dr. Max Brödel
Photoshop CS modification of original drawing by: Dr. Barbara A. Bohne
Washington University in St. Louis | Department of Otolaryngology

©2013 HEALTHSCAPES®

YOUR HEARING HEALTH

Use it or lose it...



The more you exercise your hearing, the stronger and more effective it will be.

The sooner, the better...



With timely evaluation and proper fitting, hearing devices can produce better results.

Two is better than one...



When both ears hear better, your brain naturally processes sounds easier.

**Sound
Advice**
Hearing Aid Center