

BEGINNING RANCHERS FOR TOMORROW

FORAGE AND MONITORING WORKSHOP

WHEN

May 22, 2019
8:30 am – 4:30 pm
Lunch Provided

WHERE

Scholz Lake

Kaibab National Forest, west of Flagstaff

From I-40 take exit 178 (Parks, AZ) and head south on CR 141. Stay on CR 141 for about 11.5 miles. Turn right onto FS 62, look for sign that says Scholz Lake. Drive to the end of this road, about a mile. (See map on reverse)

SPONSORED BY



United States
Department of
Agriculture

National Institute
of Food and
Agriculture

**FREE TO
PUBLIC**

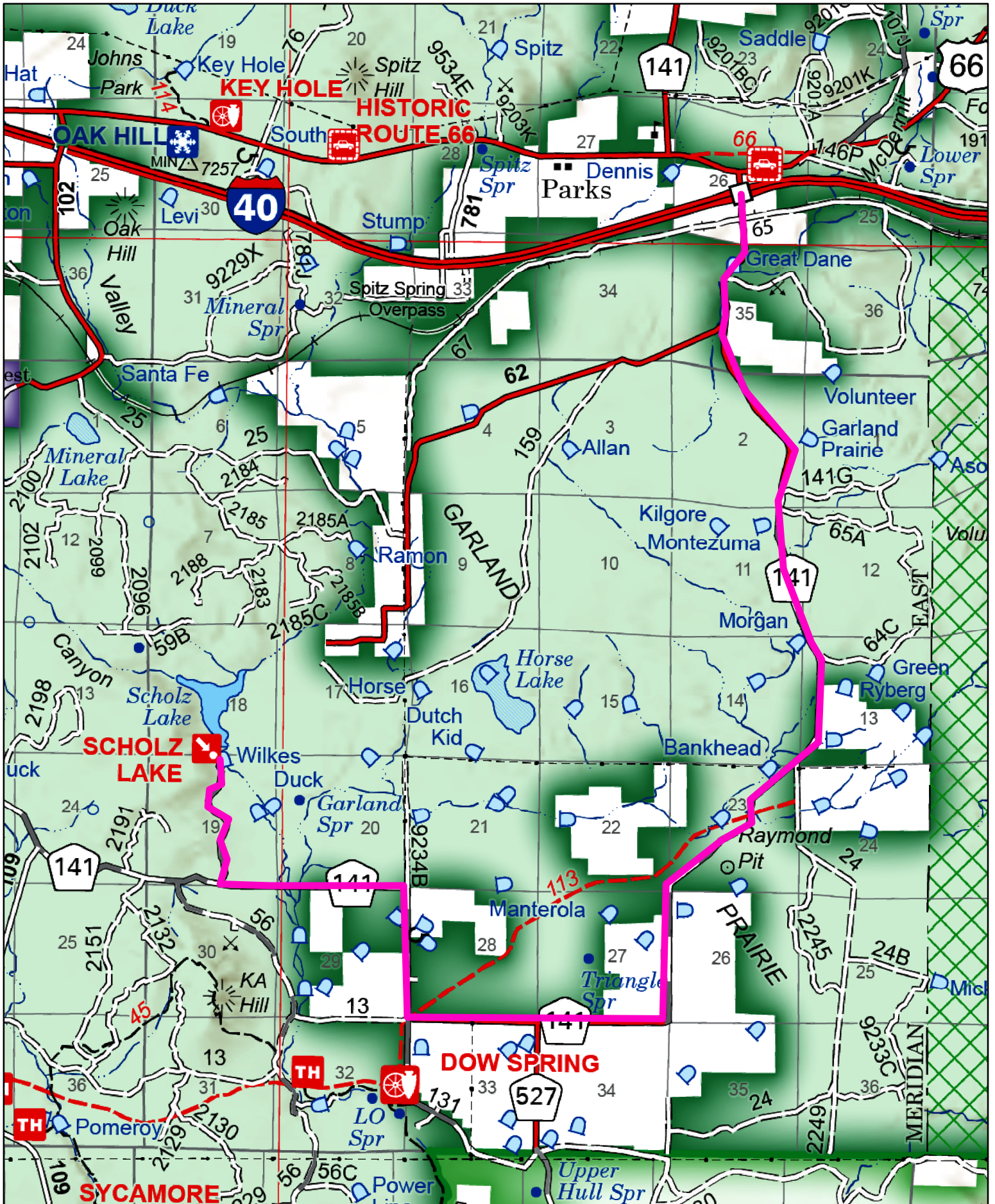
TOPICS INCLUDE:

- ◆ Plant ID
- ◆ Plant response to grazing
- ◆ Diet quality in forage plants
- ◆ Monitoring:
 - Precipitation
 - Repeat photography
 - Ground cover
 - Utilization

Issued in furtherance of Cooperative Extension work, acts of May 8 and June 30, 1914, in cooperation with the U.S. Department of Agriculture, Jeffrey C. Silvertooth, Associate Dean & Director, Extension & Economic Development, Division of Agriculture, Life and Veterinary Sciences, and Cooperative Extension, The University of Arizona.

The University of Arizona is an equal opportunity, affirmative action institution. The University does not discriminate on the basis of race, color, religion, sex, national origin, age, disability, veteran status, sexual orientation, gender identity, or genetic information in its programs and activities.

Scholz Lake Location Map



Route to Scholz Lake

