

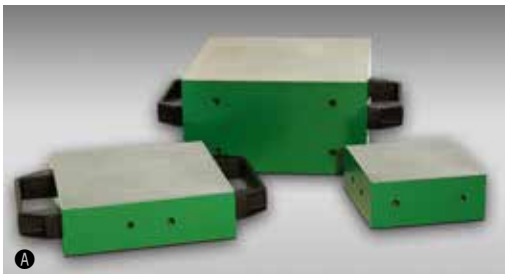
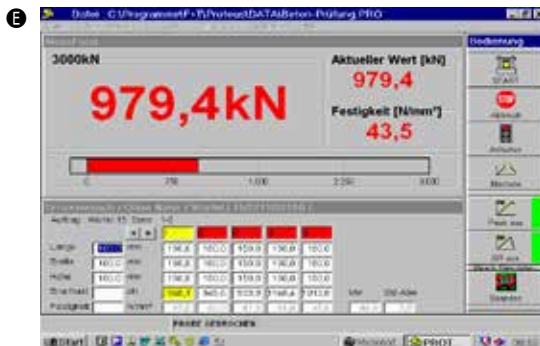


## Compression Test Machine ALPHA 3-3000 AD

- accuracy acc. to DIN EN ISO 7500-1, class 1
- execution acc. to EN 12390-4 (straintest execution)
- for the determination of compressive strengths acc. to EN 12390-3, EN 12504-1 and EN 206
- automatic load increase via digital controller **DigiMaxx® C-24** bypass-control for constant load increase controllable as ramp function between 0.1 - 50 kN/s

### Technical Data

- test load max.: 3,000 kN
- working pressure: 454 bar
- piston stroke: 65 mm
- upper pressure plate: Ø 320 mm
- lower pressure plate: Ø 300 mm
- hardness of pressure plates: 53-55 HRC
- thickness of pressure plate: 75 mm
- test area height: 340 mm
- working height: 920 mm
- inner width of test frame:
  - from left to right (width): 355 mm
  - front to back (depth): 255 mm
- measuring range: 60 ... 3,000 kN
- display area: 0 ... 3,000 kN
- stiffness: 3650 kN/mm
- compact design
- with machine base for hydraulics and electronics
- lateral housing for display and controller
- electric multi-piston hydraulic pump mounted in the oil tank
- pressure control valve
- liquid pressure transducer (DMS)
- electric supply:
  - 3 x 400 V, 50 Hz, 1.5 kW
- dimensions approx. (width x depth x height):
  - 1,360 x 580 x 1,600 mm
- weight: approx. 1,780 kg



### Technical Data – Digital Controller

- 16 Bit / 48 MHz microprocessor controls
- 100 Hz measuring and control frequency
- high control stability
- adjustable break detection
- integrated driving time of the piston, as time function of the release travel
- automatic calibration program
- 5-digit LCD-screen display
- resolution 60,000 digits
- automatic zero balance
- programmable strength calculation of 10 different test specimens with the corresponding test speeds
- display of strength in N/mm<sup>2</sup> or Mpa
- display adjustable in kN, N
- peak value memory with reset button
- code-protected calibration resp. linearization
- interface USB for output of peak value

### Accessories / Options:

- **A** distance pieces hardened, face-ground to place on the pressure plate dimensions + weight:  
210 x 210 x 110 mm - 38 kgs  
170 x 170 x 50 mm - 12 kgs  
120 x 120 x 50 mm - 5,65 kgs
- **B** distance plates, unhardened, face-ground, to place between pressure platen and piston, fixing by a dowel pin dimensions + weight:  
Ø 300 x 60 mm - 33 kgs  
Ø 300 x 50 mm - 27 kgs
- **C** centering device for pressure plates and distance pieces
- larger pressure plates dimensions:  
320 x 320 x 75 mm  
320 x 420 x 75 mm  
320 x 520 x 75 mm
- **D** integrated strip printer
- **E** test software **PROTEUS<sup>MT</sup>**
- transfer software WinTrans



**FORM+TEST Seidner & Co. GmbH**

POB 1154 • D-88491 Riedlingen  
phone: +49 (0) 7371 9302-0 • fax: -99  
www.formtest.de  
sales@formtest.de