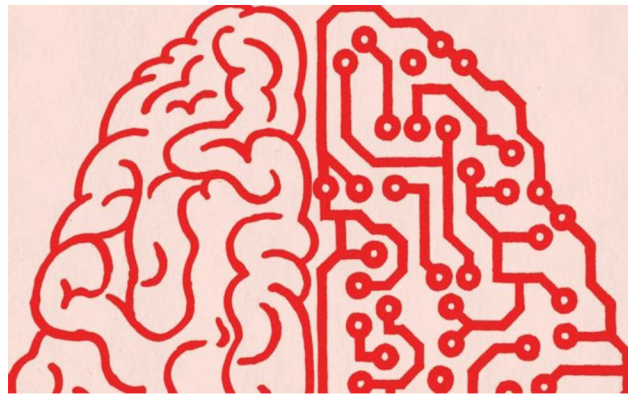

AT HOME
WITH
GROWING
OLDER



Tech Support for Growing Older:

How to better understand
the potential, hype and future of aging in a digital world

Rhoda Goldman Plaza
[2180 Post Street, San Francisco](#), *Fully Accessible*

Thursday, February 6, 2020

6:00 - 8:00 PM

Doors open at 5:30pm

Dinner will be served

PERSPECTIVES OF DESIGNER, USER, ENTREPRENEUR AND TEACHER ON TECH SOLUTIONS

Technological advances are increasingly tailored for older adults, but many products fail to serve us.

Join us on February 6th for a discussion with [Dan Gillette](#), educator, researcher and designer, CITRIS and Public Health Institute, [Anita Aaron](#), Disability Inclusion Strategist, former Executive Director of World Institute on Disability, [Katy Weber](#), entrepreneur, PopHealth Solutions and [Alexis Chettiar](#), Vice President of Clinical Operations, Center for Elders Independence, to uncover what the future of aging technology might look like.

Next week we'll address:

- How assistive and consumer technology are merging, in everything from hearing aids to smart speakers
- How the internet has become a great benefit, but also a new tool for fraud, especially for older adults
- How digital commerce platforms, such as Uber, Amazon, and Instacart, are changing how and where people are able to age in place
- How robots and artificial intelligence are changing work and leisure for older adults

RSVP

online or call (510) 771-0116.

Suggested Donation: \$20.

Season subscribers use discount code. Scholarships available.

Please [click here](#) to join our interdisciplinary, passionate group of volunteers and tell us how you would like to get involved!

*We would like to thank our volunteers and
our sponsors and partners:*



*Special thanks to the Center for Accsesible Technology,
our long term East Bay Forum Partner*

To ensure that you receive all of our updates and forum invitation in your primary inbox, please add ssadler@athomewithgrowingolder.org to your email contacts.

www.athomewithgrowingolder.org



At Home With Growing Older | [3106 Shattuck Ave, Berkeley, CA 94705](#)

[Unsubscribe](#) marie@sfcommunityliving.org

[Update Profile](#) | [About Constant Contact](#)

Sent by ssadler@athomewithgrowingolder.org in collaboration with



Try email marketing for free today!