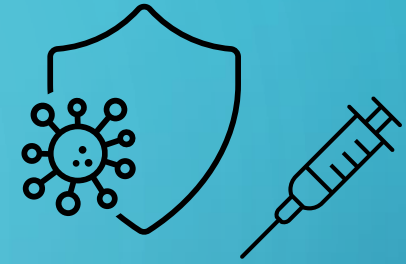


# COVID-19 VACCINE RESOURCES

as of January 28, 2021



## For Montgomery County residents:

If you live or work in Montgomery County and are 65 years old and older \*OR\* you have a health condition that qualifies you for the vaccine under Phase 1A, you can [pre-register here](#).

If you are a Montgomery County healthcare worker that qualifies for Phase 1A or a business/industry who qualify for Phase 1A or 1B you/your business/ provider can fill out [this form to schedule vaccinations](#).

## For Chester County residents:

If you live or work in Chester County and are 65 years old and older \*OR\* you have a health condition that qualifies you for the vaccine under Phase 1A, you can [click here](#) to pre-register.

## For Berks County residents:

If you live or work in Berks County and are 65 years old and older \*OR\* you have a health condition that qualifies you for the vaccine under Phase 1A, you can [click here](#) for information on pre-registering.

For more information on the vaccination phases and Pennsylvania COVID-19 updates, visit the [Pennsylvania Health Department's COVID-19 vaccine page](#).

