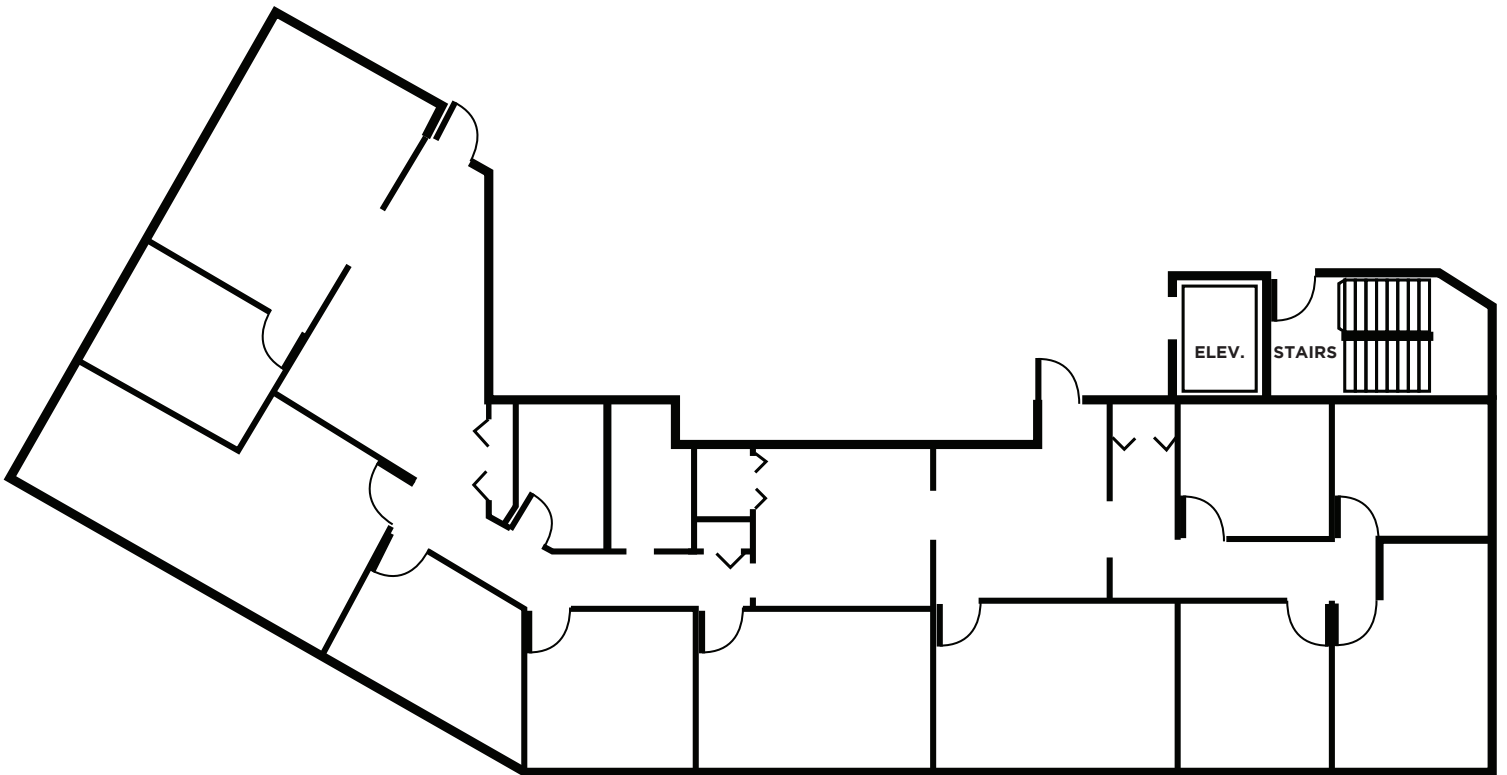


FOR LEASE
43636 WOODWARD AVE

BLOOMFIELD HILLS, MI



FLOOR PLAN



SPACE AVAILABLE FOR LEASE
APPROX 3,150 SQ FT.

© 2020 CBRE, Inc. All rights reserved. This information has been obtained from sources believed reliable, but has not been verified for accuracy or completeness. You should conduct a careful, independent investigation of the property and verify all information. Any reliance on this information is solely at your own risk. CBRE and the CBRE logo are service marks of CBRE, Inc. All other marks displayed on this document are the property of their respective owners, and the use of such logos does not imply any affiliation with or endorsement of CBRE. Photos herein are the property of their respective owners. Use of these images without the express written consent of the owner is prohibited.

www.cbre.com/detroit

CBRE

FOR LEASE 43636 WOODWARD AVE

BLOOMFIELD HILLS, MI



PROPERTY OVERVIEW

- + County: Oakland
- + Zoning: BI
- + Total Building Size: 22,000 SF
- + Total Available: 3,150 SF
- + Lease Rate: \$18.50/RSF Full Service Gross
- + Taxes: \$1.63/SF (2018)



LAND & STRUCTURES

Year Built:	1992	Construction:	Masonry
Total Available:	3,150 SF	Slab to Slab	11'
Office SF:	3,150 SF	Stories:	Two (2)
Land Acres:	1.28 Acres	Elevators:	Yes
Tenancy:	Multi	Parking:	58 Spaces Total 3.95/1,000 SF



COMMENTS

- + Minimum Term: Negotiable
- + Suites Located on Floors: 2
- + Prestigious Bloomfield Hills Address
- + Close proximity to I-75



CONTACT US

KEVIN KOEHLER

President - CAM
248 972 1101
koehler@buildwithcam.com

© 2020 CBRE, Inc. All rights reserved. This information has been obtained from sources believed reliable, but has not been verified for accuracy or completeness. You should conduct a careful, independent investigation of the property and verify all information. Any reliance on this information is solely at your own risk. CBRE and the CBRE logo are service marks of CBRE, Inc. All other marks displayed on this document are the property of their respective owners, and the use of such logos does not imply any affiliation with or endorsement of CBRE. Photos herein are the property of their respective owners. Use of these images without the express written consent of the owner is prohibited.