

AgriNet Update



Added Production Reporting to MBSOI

AgriNet

The Map-Based Schedule of Insurance may now be used to report production.

To enable this ability, open the Print Options screen, select either **Unit Number** or **Crop/Unit** from the **Sort** menu, then select **Include Production**.

Map Based Schedule of Insurance Options

Create Batch Form

Crops

All Commodities

Acreage Reporting Dates

All Dates

Agencies

All Agencies

Select an Agent

Printing Options

☐ Include EU Liability by Practice
 ☐ Include SBI Page
 ☐ Exclude Preliminary MPC I SOI/PR

☐ Sort by Insured's Name
 ☒ Sort by Policy Number

Sort

☐ Section
 ☐ Entire Section
 ☒ Unit Number
 ☒ Include Production
 ☐ Crop/Unit
 ☐ FSN/Tract
 ☐ FSN

Added Review Indicator to Production Reports

AgriNet

On the Approved APH Production and Yield Report and the Production and Yield Reporting Form, an R will be listed alongside years for which a quality control review has been completed.

Rolled Winter Wheat and Barley to 2026

AgriNet

Acreage lines for winter wheat and barley have been moved to the 2026 crop year within AgriNet. Acreage lines for spring crops will be rolled later in the year.

Year
2006
2007
2009
2011
2013
2015
2016
2018
2020
2022R

www.agrisompo.com

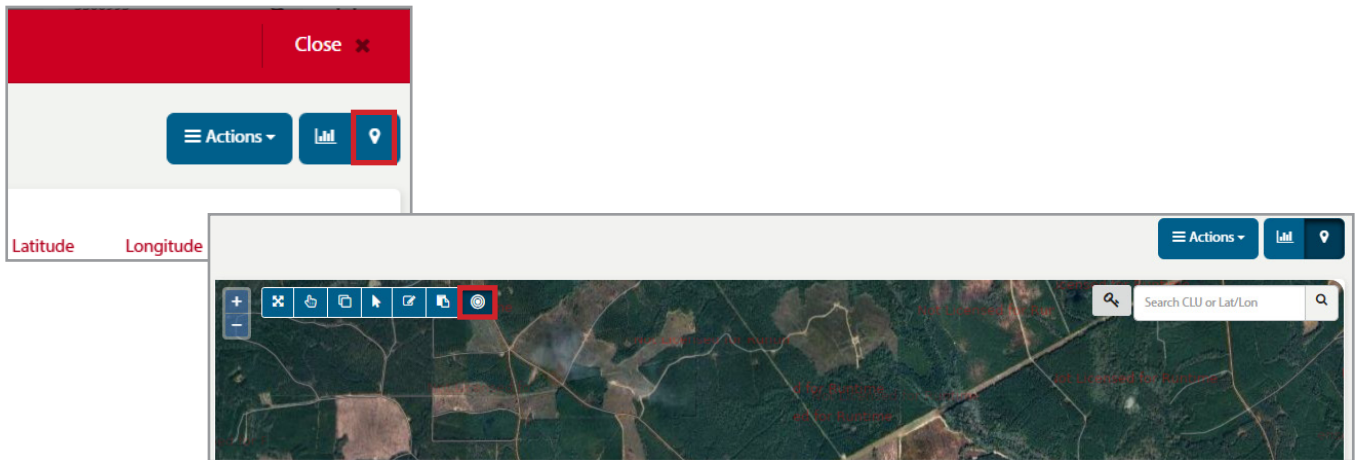
AgriSompo is an equal opportunity provider.

Added Ability for POR on Apiculture Maps

AgriNet

Users may now add a Point of Reference directly onto the map when working apiculture policies.

Open the **Edit Grid ID** screen, click the **Mapping** icon in the upper right corner of the screen, and select the **Point of Reference** tool from the far right of the mapping toolbar.



Improved Policy Roll for Sugarcane

AgriNet

When sugarcane acreage lines roll from year to year, the system will automatically update the age of each line. In addition, acreage lines linked to the same APH but split by plant year will remain split in the new reinsurance year.

Sugarcane policies are scheduled to roll to 2026 on or after 8/15.

Added Ability to Key Production and Revenue for Second-Year Pecan Revenue Coverage

AgriNet

For Pecan Revenue policies in the second year of a two-year module, users have the ability to key both production and revenue information for the prior year.