



Excellence  
Community  
Innovative Learning  
Communication  
Citizenship

# Advisory Committee Meeting Agenda

## January 23, 2018

### ➔ Context

- Community Engagement & Input
- Masterplan Update
- Timeline
- Committee Work Time







# STEAMBOAT SPRINGS SCHOOL DISTRICT



**2017-2018 Student Enrollment as of  
January 18, 2018 is **2644****

**574** Soda Creek Elementary

**515** Strawberry Park Elementary

**620** Steamboat Middle School

**816** Steamboat High School

**28** Yampa Valley High School

**91** North Routt Community Charter School

# District Statistics



**16%**

of students qualify for **free or reduced lunch**  
down from 19% in 2015-16

**18%**

of student population represent **minority ethnicities** up from 16 % in 2015-16



**29%**

of district households **have children**



**97%**

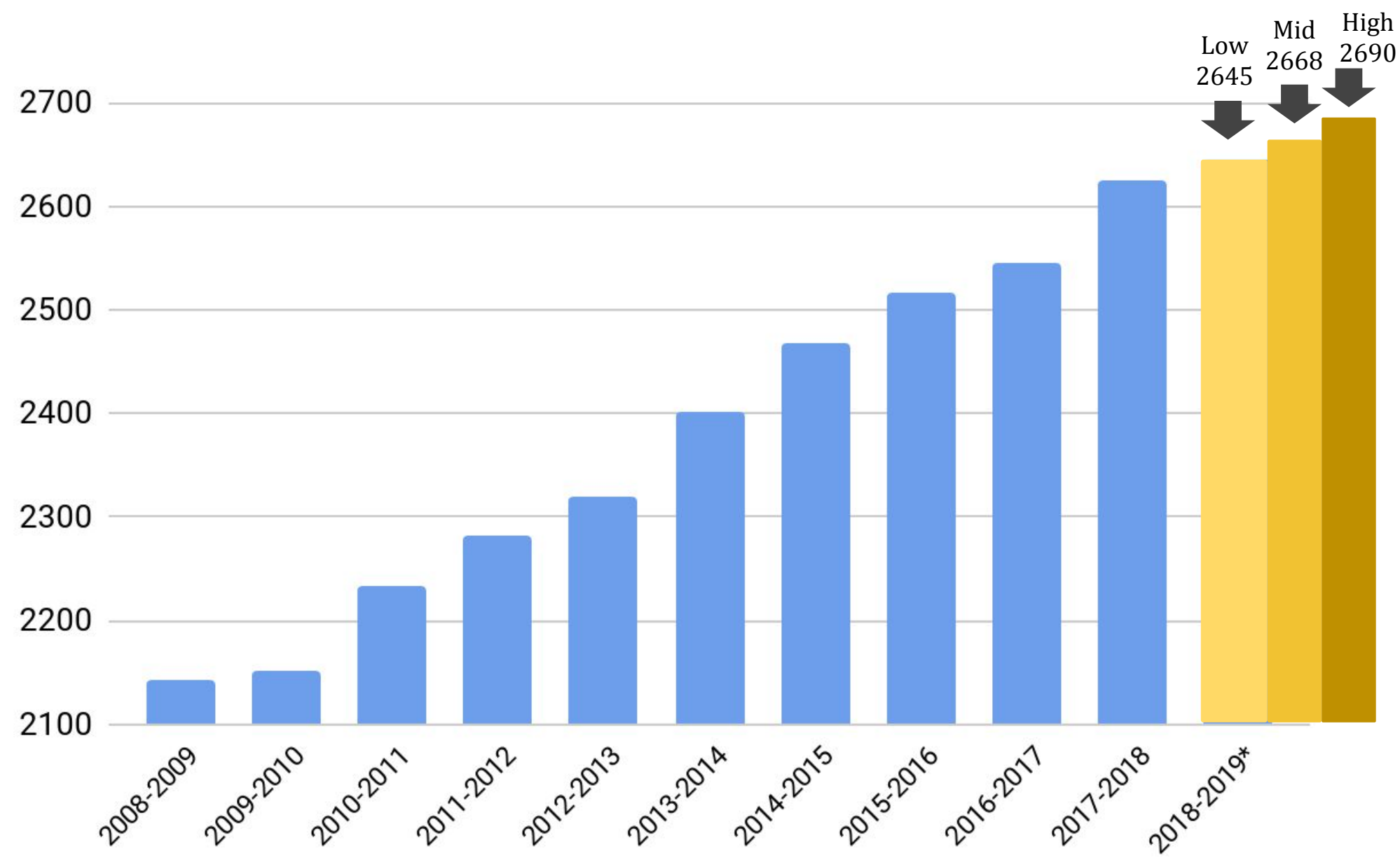
of the adult population are **high school graduates**

**61%**

of the adult population have **college degrees**

Excellence  
Community  
Innovative Learning  
Communication  
Citizenship

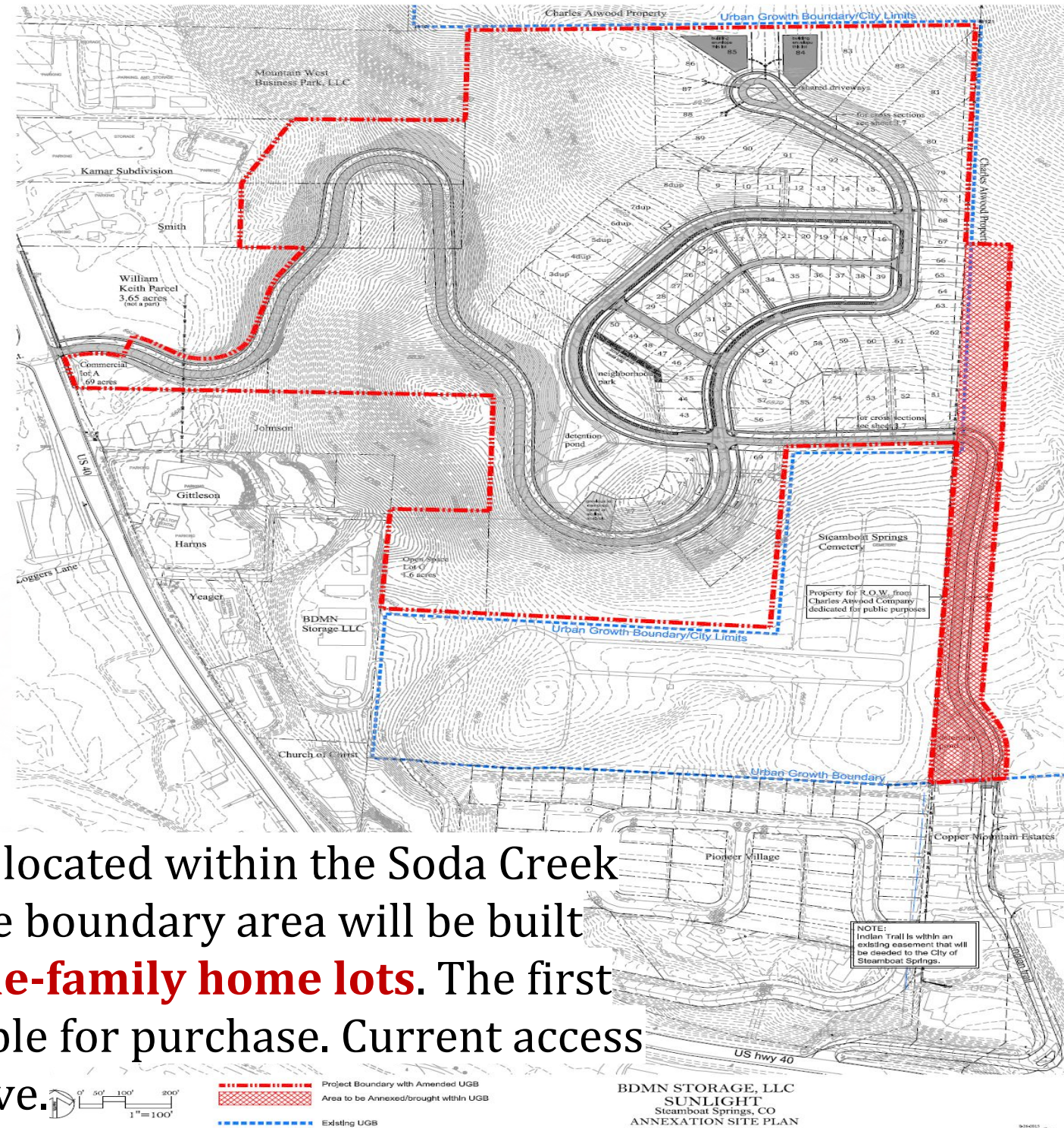
# District Enrollment



*\*Projected Enrollment*

Excellence  
Community  
Innovative Learning  
Communication  
Citizenship





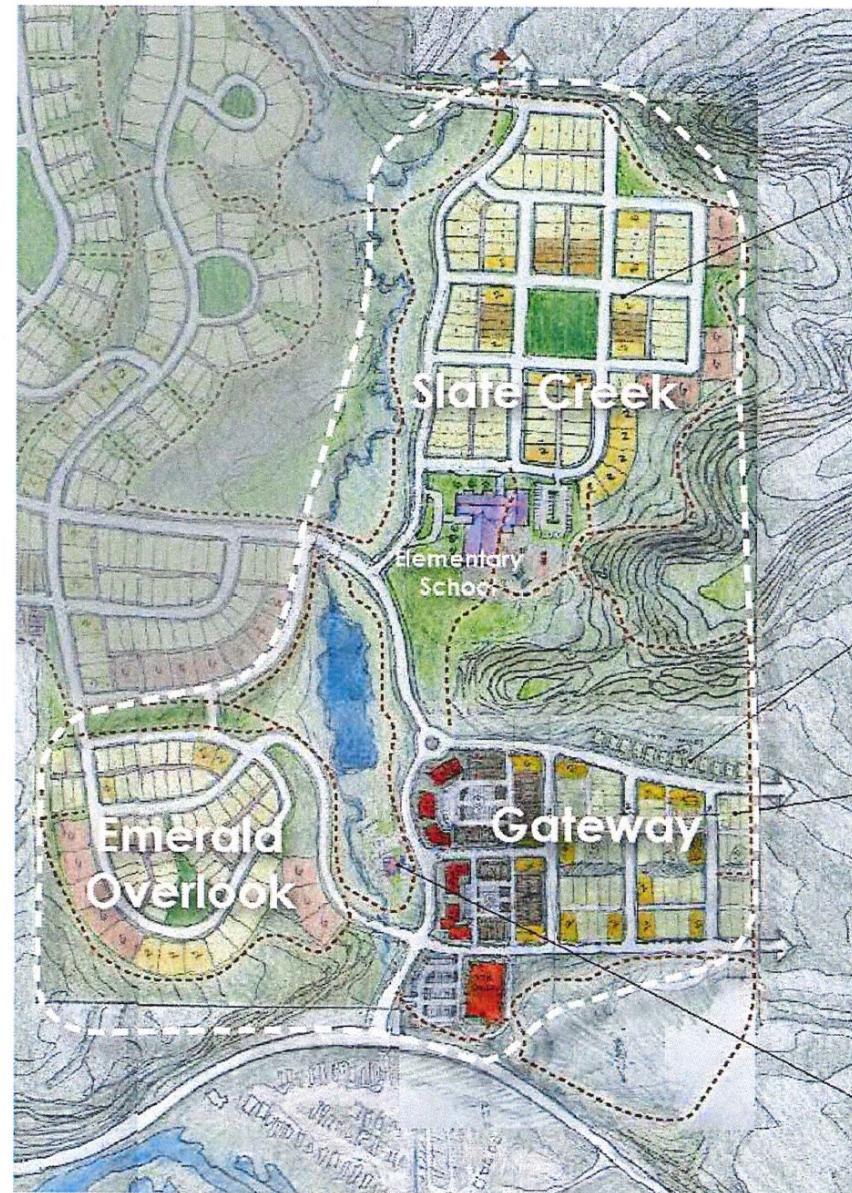
Sunlight Development located within the Soda Creek Elementary attendance boundary area will be built out to include **92 single-family home lots**. The first 25 lots are now available for purchase. Current access is via Indian Trails Drive.

Excellence  
Community  
Innovative Learning  
Communication  
Citizenship



# PROPOSED

## REVISED ANNEXATION AREA & DEVELOPMENT CONCEPT



UNIT MIX PER NEIGHBORHOOD

NEIGHBORHOOD	Large Lot SF	Sm/Med Lot SF	Duplex	Town-house	Hillside	WSN Totals
GATEWAY 80% workforce	0	53	28	38	12	131
SLATE CREEK	16	48	30	16	36	146
EMERALD	5	50	14	0	48	117
Totals	21	151	72	54	96	394

### *Gateway Neighborhood:*

- Attainable for full time locals
- Locals work requirement on 105 homes
- No short term rentals

### *Other Highlights:*

- Sites for potential grocery and elementary school
- Neighborhood commercial
- Trails and open space throughout

# November 2015 Bond/Mill Levy Override

- In 2015, the Steamboat Springs School District Board of Education referred a \$92 million construction bond question (3B) and a \$1.98 million mill levy question (3A) to district voters.
- The bond question included money to build a new high school, convert the current high school to a middle school, renovate the existing middle school to a 3-5 elementary school, add preschool to the elementary schools, relocate the Yampa Valley High School to the new middle school campus and fund capital renewal projects at all current school locations as needed.
- Issue 3A: 22% Yes, **77% No**
- Issue 3B: 20% Yes, **79% No**

[steamboatschools.net/facilities-master-plan-4dc8c573](http://steamboatschools.net/facilities-master-plan-4dc8c573)



**CC4E was instrumental in bringing the community together (February 2016 - May 2017) to discuss and collaborate on important issues that impact our students, schools, and community.**

***An exemplar of community involvement and engagement, CC4E facilitated meaningful discussion and provided thoughtful solutions.***

- Independent group of 19 volunteers
- Held community forums
- Examined facilities, demographics, policies, accountability, and programming through subcommittees
- Researched trends and best practices
- Raised awareness within the community about the issues and challenges faced by the school district

**[www.cc4e.org](http://www.cc4e.org)**

**Excellence**  
**Community**  
Innovative Learning  
Communication  
Citizenship

# November 2016 Mill Levy Override

- The Steamboat Springs Board of Education referred Referendum 3C, a mill levy override to fund free all-day kindergarten in the city, to the ballot.
- The money generated from the tax ensures all students have the opportunity to attend a full-day program regardless of their family's ability to pay. In the past, district tuition was as high as \$2,400 per student.
- The tax varies each year and generates enough money to match the approximate number of students enrolled in kindergarten; up to \$950,000 can be collected in the event that enrollment or funding levels significantly increases.
- The tax would stop being collected if the state of Colorado ever begins funding full-day kindergarten.
- Issue 3C: **52% Yes**, 48% No



# November 2017 Bond/Mill Levy Override (Phase I)

## 3D: \$12.9 Million, 7-Year Bond

### 7-YEAR BOND FOR THREE PROJECTS

- **Roof Replacement**
  - SPE
  - SSMS
  - SSHS
  - District Office
  - Transportation
- **SSMS HVAC Installation/Upgrade/Replacement**
- **Gardner Field:** Turf and track replacement & Stadium Improvements

## 3C: \$1 Million Ongoing Capital Construction Mill Levy

### FIXED MILL AMOUNT (~1.146 MILLS) BASED ON NET ESTIMATED ASSESSED VALUE OF \$873 MILLION\*

The fixed mill will generate \$1 million in year one; funding in future years will fluctuate based on assessed value

### Election Outcome

Issue 3C: 60% Yes, 40% No

Issue 3D: 63% Yes, 37% No

**Phase II & Phase III: Continued collaboration with the community around long-term solutions and strategies that will serve our students far into the future**

**Advisory Committees: Inform the Masterplanning process and put forward options and recommendations for board consideration related to 2019 (and/or future) bond/mill levy initiatives.**





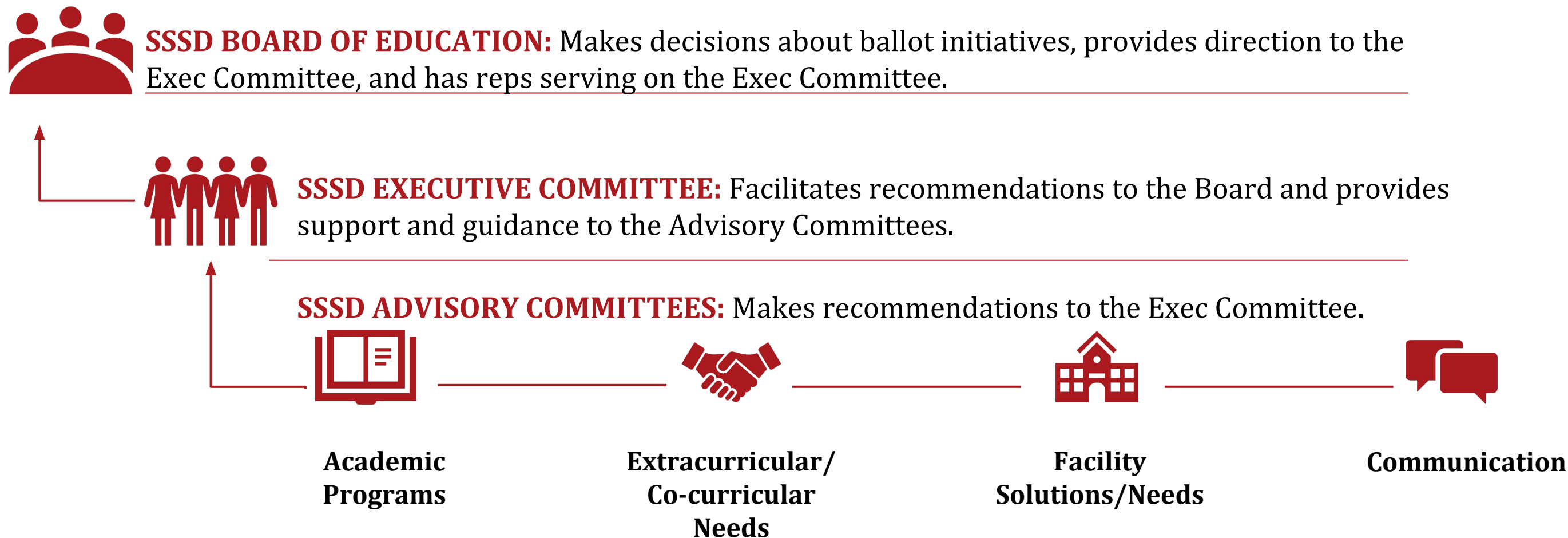
# Advisory Committee Meeting Agenda

## January 23, 2018

- Context
- ➔ Community Engagement & Input
- Masterplan Update
- Timeline
- Committee Work Time



# Phase II: SSSD Advisory Committees





# Phase II: SSSD Advisory Committees



## ACADEMIC PROGRAMS

Identify opportunities to fund projects that strengthen and/or enhance the district’s academic programs and provide the space needed for program implementation.



## EXTRACURRICULAR/ CO-CURRICULAR NEEDS

Identify current and future extracurricular/ co-curricular space needs



## FACILITY SOLUTIONS/NEEDS

Identify potential projects that increase community partnerships for the benefit of students and community.



## COMMUNICATION

Increase communication with community members—especially those who do not have a connection to the school district—with the goal of informing the community and receiving their feedback on the need for future public funding initiatives.

# Academic Programs: Site Needs (Examples)



## ACADEMIC PROGRAMS

### **Elementary Schools**

- Small group learning/intervention rooms
- Project space for students (MakerSpace)
- Science rooms/labs

### **Middle School**

- Updated science labs
- Project/small group spaces
- PE classroom space

### **High School**

- Additional science classrooms and fine arts spaces
- Designated MakerSpace

### **Yampa Valley High School** (located at the 7th Street)

- Science classroom

# Extracurricular/Co-curricular Needs: Site Needs



EXTRACURRICULAR/  
CO-CURRICULAR NEEDS

## **Soda Creek Elementary**

- Increase mental health support spaces

## **Strawberry Park Elementary**

- New gym or cafeteria

## **Steamboat Springs Middle School**

- Repairs of field and track

## **Steamboat Springs High School**

- More field space for outdoor athletic programs to avoid, for example, outdoor practices that go past 9PM
- Cheerleading and dance teams practice space



# Facility Solutions/Needs: Site Challenges



FACILITY SOLUTIONS/  
NEEDS

## **Soda Creek Elementary**

- 2 modulars buildings on site (since 2014-15)

## **Strawberry Park Elementary**

- Cafeteria/gym/auditorium

## **Steamboat Springs Middle School**

- Cafeteria is over capacity despite multiple lunch periods
- Enrollment capacity; large core classes due to space

## **Steamboat Springs High School**

- Cafeteria is over capacity with one lunch period
- Theater requires renovations

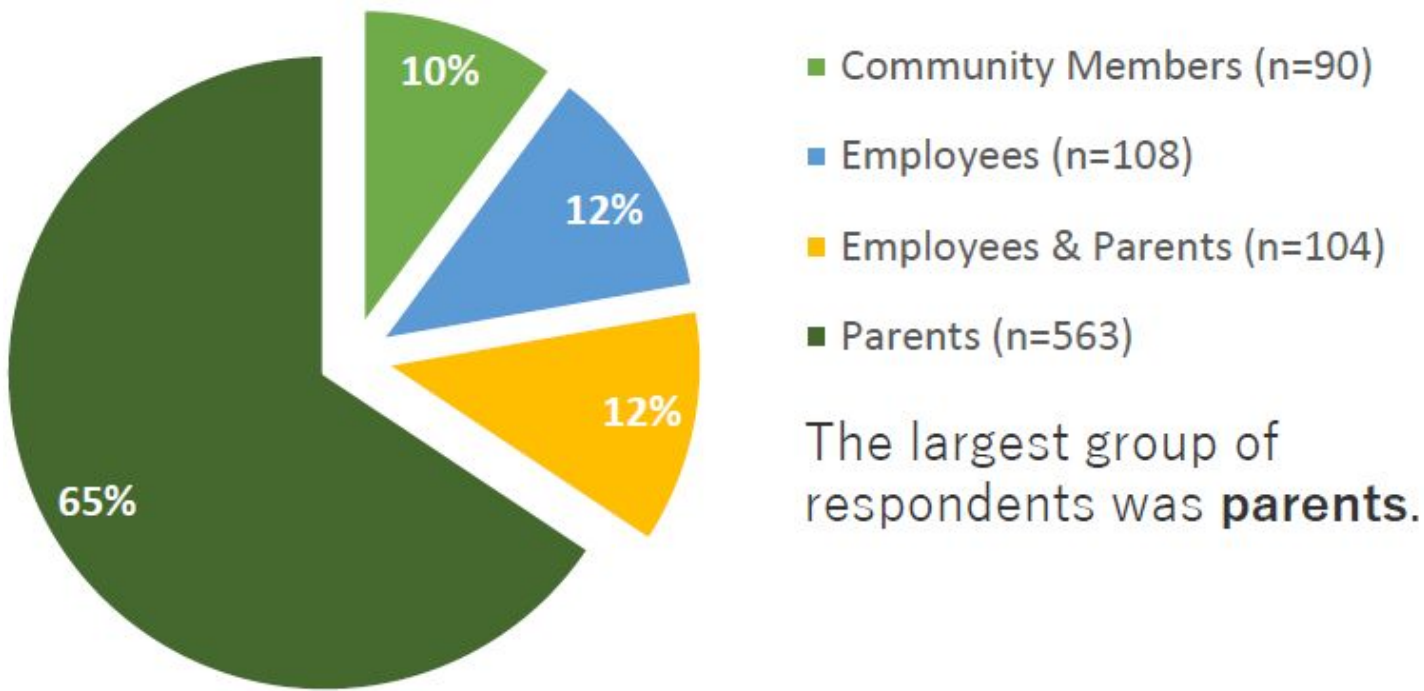
## **Yampa Valley High School (located at the 7th Street)**

- No “commons” area
- Limited options for expansion as population grows

# 2017 Perception Survey Data

## 865 total survey respondents\*

- 10% of respondents are community members
- 25% of respondents work for SSSD\*\*
- 77% of respondents are parents\*\*



## Response Rate

76% of respondents reached the survey via email

24% of respondents reached the survey via web link

### Email Invitation

364/Staff 2,583/Parents\*\*\*

51% Staff  
Includes staff members who are parents

26% Parents\*\*\*\*

# Advisory Committee Meeting Agenda

## January 23, 2018

- Context
- Community Engagement & Input
- ➔ Masterplan Update
- Timeline
- Committee Work Time





## Phase II: 2018-2019 HCM Masterplan Update

- Assess all buildings for physical condition and educational adequacy; update facility assessment reports
- Conduct staff and student interviews to better understand the challenges of each building
- Hold public meetings to understanding community concerns, desires, and priorities
- Create option comparisons and evaluate cost, location, transportation, and traffic impacts of options
- HCM provides a 2018-2019 SSSD Masterplan

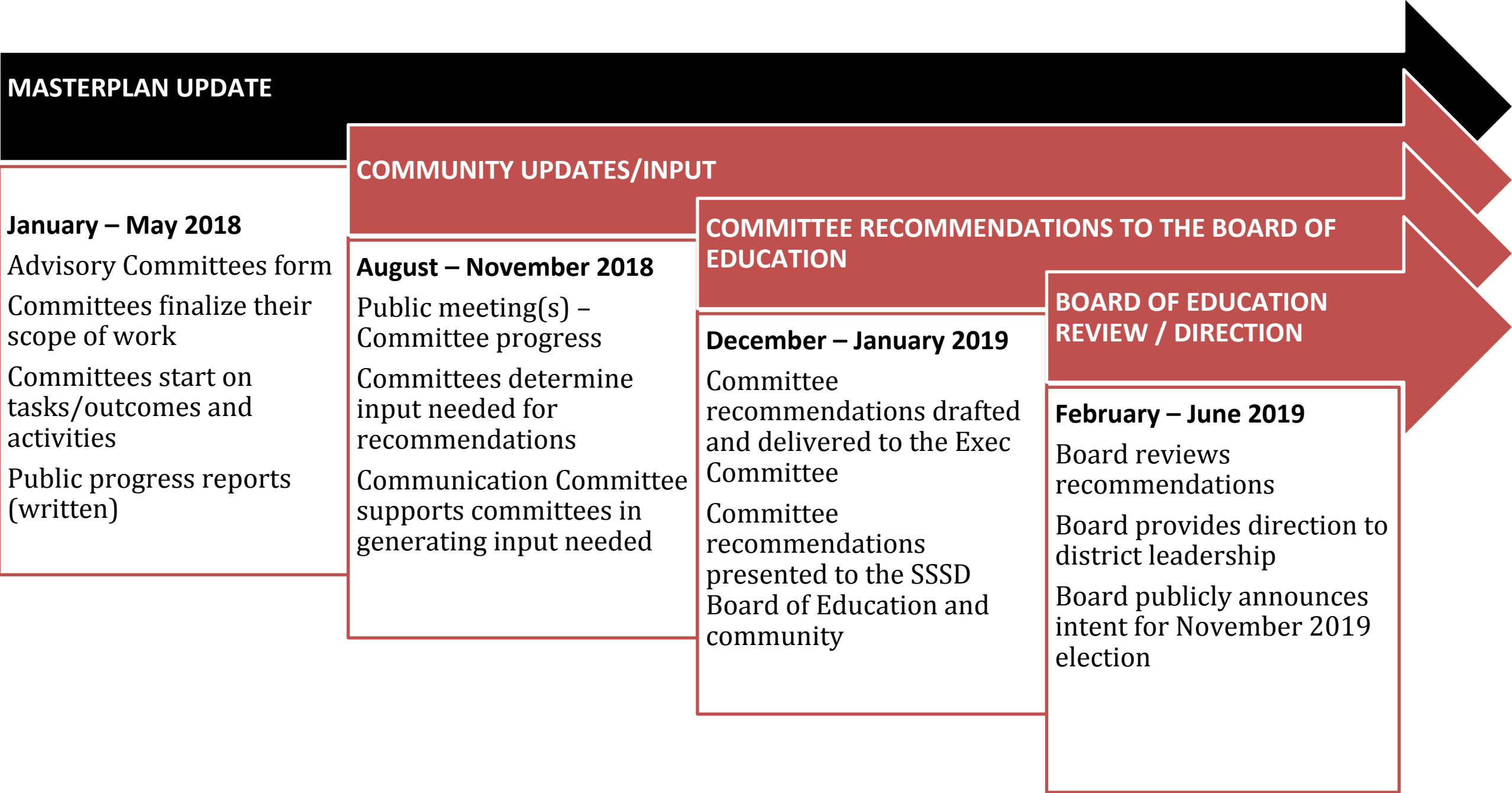
# Advisory Committee Meeting Agenda

## January 23, 2018

- Context
- Community Engagement & Input
- Masterplan Update
- ➔ Timeline
- Committee Work Time



# Timeline





# Advisory Committee Meeting Agenda

## January 23, 2018

- Context
- Community Engagement & Input
- Masterplan Update
- Timeline

➔ Committee Work Time



# Committee Time

- Introductions
- Set norms
- Selecting Co-facilitator
- Scheduling next meeting date

Excellence  
Community  
Innovative Learning  
Communication  
Citizenship

*Thank You!*



[www.steamboatschools.net](http://www.steamboatschools.net)