

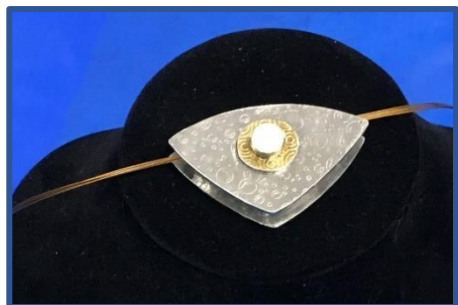
Georgia Metal Clay Guild



Newsletter ~ April 2019

Pam East called the meeting to order on April 10 at 7pm at Spruill Center for the Arts. She briefly discussed some of our possible future programming. From there we went directly to the program offering for the evening – photographing our work!

There was a nice “Show and Tell” display as everyone brought something for Pam to photograph!

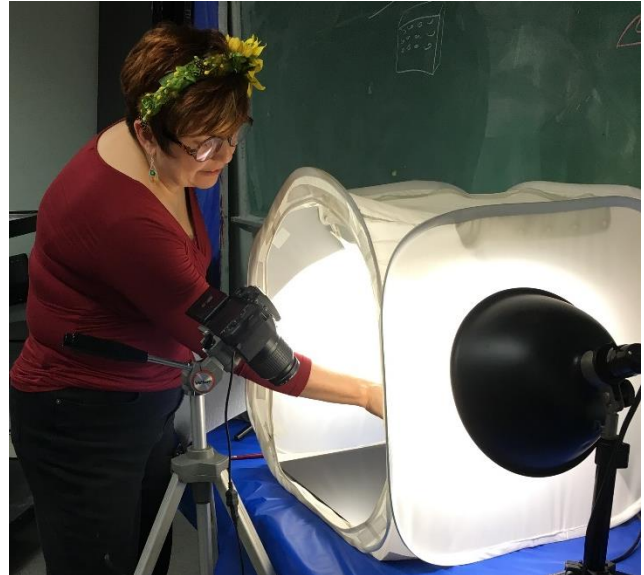


April Program – “Photographing Your Jewelry”

Presented by Pam East

Pam presented the basics of photographing jewelry. The first need is a camera that allows manual control of focus, f stop and shutter speed. In addition, a lighting system including 5000-6000K lights (daylight) and a diffusion tent provide the environment for excellent photos.

At that point, each of us watched as Pam set up and photographed our piece. What a deal!



It's important to set the item up in an interesting way—especially chains. Using a brush helps adjust things without fingerprints or dust.



It pays to have a tripod to prevent any movement and free your hands for manipulating lights etc.

Glares are prevented by using a bounce light which needs to be experimented with manually allowing the effects to be observed and manipulated for the best results.

See the difference! The photo on the left was taken with a smartphone. Not too bad on the face of it.

But look at the professional job in the two photos on the right. The light and shadows without glare. This makes a big difference to a potential juror.



Raffle

We had three raffle items. Pam East donated a diffusion tent for photography and a private session with her in her photography lab!

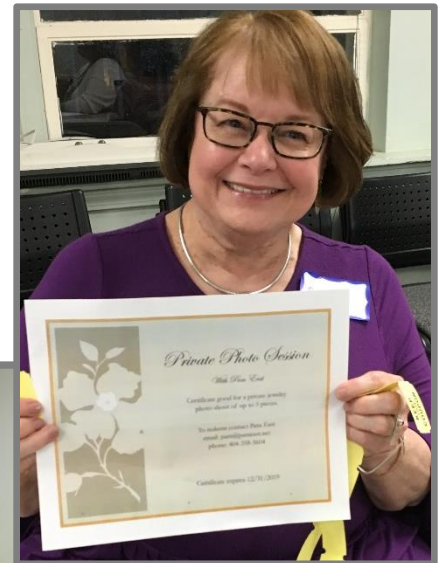
Kristine Richardson won the tent and Susan Woodhall the photo session.

Pam also arranged to raffle her Jewelry Photography Craftcast Class.

Karen Koerts was the lucky winner!

Congratulations ladies!

Thanks Pam!



Jackie's Corner

Because Jackie Comet is our shopper without equal, and is always finding neat stuff cheap, we decided to give Jackie a column where she will clue us in on some of this!



Who would have thought?!

Acquire an ashtray (they come in all shapes and sizes – this one's kinda elaborate!) You don't have to take up smoking to get one!



Then put in your tools and brushes that need to be kept available and supported.

How cool is that?

Tips and Tricks – Carolyn Crutchfield

There are any number of ways that the items in the kiln may be supported for firing.

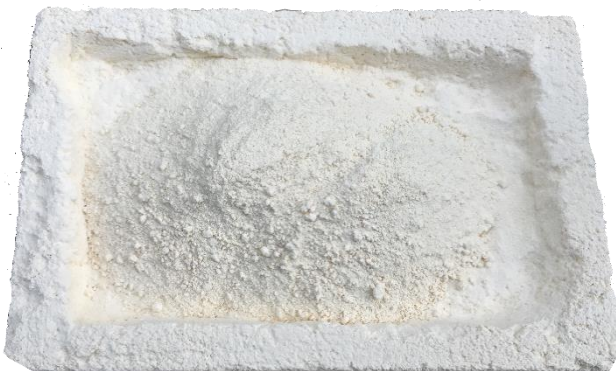
Several come to mind: Fiber Blanket (the problem is it often sticks to things). Vermiculite (can be messy and difficult to contain). Alumina hydrate: people are often concerned about toxic effects from heating the substance and it is a very fine powder, which can easily be inhaled—so care needs to be taken.



I have made such a thing from fire brick. To me, it seems to function very well and by-passes the problems with the other candidates.

To make this I first sawed a slice of the soft firebrick about 1 inch thick.

Scoop out the center area leaving sides and a bottom. Keep all the bits and pieces that are scooped out.



Smush and grind up the pieces to a powder-like consistency. The brick is very soft, and this is easy to do. Then pour what you have made back into the hollow of the brick. Now you have a great heat-



It makes a very safe, effective supporting material and heat has no effect on it. Of course, you could just break up some firebrick and put it in a crucible or other container, if you don't want to carve one from the brick. Where's the fun in that?

Program Calendar

Spruill Center for the Arts, Rm 4, 7:00-9:00 pm 2nd Wednesdays

May 8 --Our first Flea Market has been cancelled for apparent lack of interest.

June 12 -- The JoolTool with **Ricky Frank** -- Master enamellist Ricky Frank will be demonstrating jewelry finishing techniques using the JoolTool bench polisher system!

July: Summer Break. No meeting

August: Jill Sharp presents on internet marketing (tentative)

September: Dallas Vinson presents on bench tools (tentative)

October: Izabela Sliwinska Presents on 3D printing (tentative)

November: TBD

December: Third Annual Holiday Party!

June Raffle



We will be raffling off a brand new JoolTool!

Raffle tickets will be on sale soon. You don't need to be present to win, but you won't want to miss Ricky's fantastic demonstration!

Tickets can be bought from Pam, Pat, Kristen, Joann, Amy and Jackie.