

Georgia Metal Clay Guild



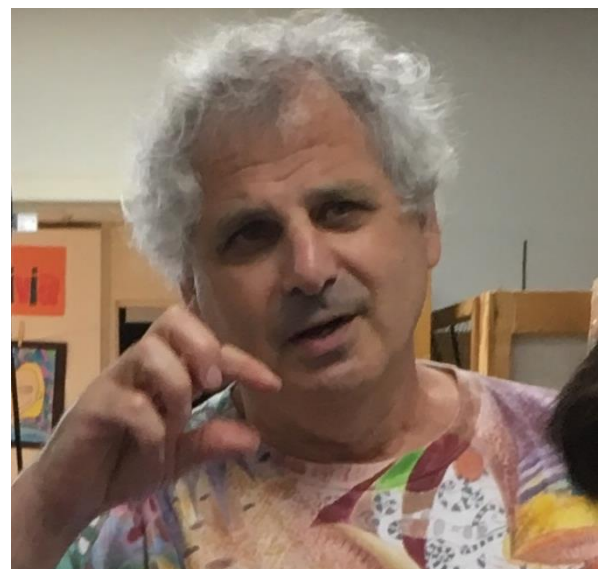
Newsletter ~ June 2019

1. Pam East called the meeting to order on June 12 at 7pm at Spruill Center for the Arts. Asking for 2 volunteers/meeting to set up. Volunteers will receive a free regular raffle ticket.
2. Thank you to Pat and Carolyn for setting up today's meeting. And thank you to Jackie, as always, for the hospitality set up.
3. There is no meeting in July.
4. August meeting presentation is being given by Jill Sharp on marketing jewelry online and social media.
5. September meeting presentation is tentatively by Dallas, topic to be determined.
6. October meeting presentation is being given by member Izabella on 3D printing.
7. Pam is open for suggestions for the topic of the November meeting.
8. Many thanks to Helen for taking the minutes of the meetings.
9. The 2019 International Silver Accessories contest is currently accepting entries until 08/10. Entrants will be submitting actual pieces, not photos. Be prepared to be parted from your piece for a period of time as the pieces will be sent to Japan for judging. Pieces must be primarily made of Art Clay Silver. Grand Prize is a trip to Japan!! Go to artclayworld.com for information. This is a judged competition and pieces are being submitted from around the world.

June Program – “The Jool Tool”

A Presentation by Ricky Frank

Ricky Frank is one of the top enamellists in the country, perhaps the world. Almost everyone is familiar with his work. The difficulty in obtaining one is always what to choose!





Ricky met Anie and was introduced to the Jool Tool, and as he says: “it changed my life!”. He is a self-taught enamellist, and has finished his productions from hand grinding enamel, to electric ways of grinding enamel to expanding drums. These all require a relatively high learning curve. The Jool Tool gets the job done efficiently and with a very low learning curve (about 10 minutes). Ricky has been doing enamel work for 43 years and loves this tool. It makes grinding and polishing FUN!! Now that’s worth talking about!

Grinding removes rough edges of the piece etc. and can shape the substrate. Polishing goes to how the piece will look when finished.

You need to think about grit, the coarser it is; the more abrasive, the more material is removed. The finer the abrasive, the less material is removed and the closer together the “scratches” are.

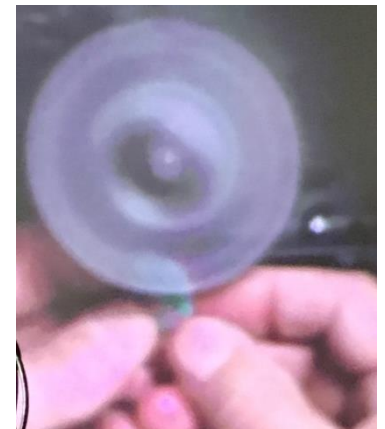
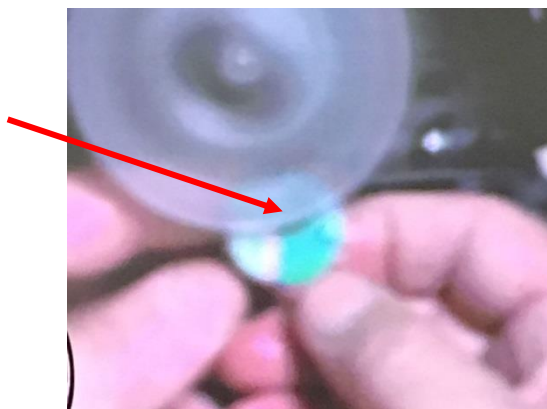
Be intentional about what you are doing. Think about it. When you stop thinking about things mistakes are made.

The pads used by the Jool Tool are 3M products. They come in coarse, medium, fine and very fine. Except for the coarse grade, the pads have cushions.



Unlike most sharpening and polishing systems, you can work from the underside of your workpiece, and have a clear view the entire time. With regular grinding you must stop and look etc. before proceeding.

The angle and position can be changed as you go, one hand controls pressure and the other rotation and position.



Ricky also demonstrated the Foredom Micromotors which are very useful, especially if you have shoulder problems, because they work like a flex shaft but are lighter and smaller. The business end is held like a pen giving finer control.

One model comes with a rechargeable battery and is very portable. The other is a desktop model.



Ricky Frank also sells the Jool Tool and can be purchased from him at 10% discount. He is also a Foredom dealer and can provide a 25% discount on the Micromotors.

Jackie's Corner

Because Jackie Comet is our shopper without equal, and is always finding neat stuff cheap, we decided to give Jackie a column where she will clue us in on some of this!

What does baking cakes have in common with working in metal clay? A perusal of the area in a craft store will find many items that can be used in the activities of both.

Here is a rolling wheel decorator for a design for borders or textures. They have many.



Fondant modeling tools are very useful.

There are molds, cutters, and writing tips. The possibilities are endless.

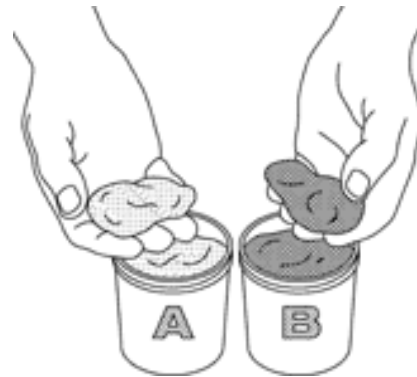
Have a roll and let us know what you think. Don't forget we'll have some for purchase at the next Guild meeting.

Tips and Tricks – Carolyn Crutchfield

I thought it might be fun and useful to explore the many ways and materials that can be used to make molds. These can't be covered in one Newsletter, so I thought we'd have a little series: Making Molds 101.

We'll start with a process everyone is quite familiar with – the 2-part silicon putty mold material. Use equal parts and mix thoroughly with your fingers. Press in your object and it's set up in a few minutes and you have a mold.

Many of us remember when it first came out and was generally sold by Rio, who has their own brand. Just about everybody has gotten into the act and there are many versions of this product, although I suspect they are mostly made by the same manufacturer.



There is one newer brand of this silicon material made by Castaldo and called Quick-Sil. I single it out here because in my experience it has better qualities than some of the others.



If it is mixed quickly and there's enough of it, it can be rolled out thinner to mold such objects as leaves.



Castaldo makes crisper deeper images and can also withstand low melt metals (make lead castings) as well. These two molds seem to bear that out. The Green (Castaldo) mold is deeper and crisper. The purple (Cool Tools) may have set a little more quickly which adds to its failure to produce an equivalent image.

June Raffle

The winner of the brand new Jool Tool, our June raffle item was Dawn Di Meglio! Everybody wanted that one! It was fun to have the person who won to be in attendance, and we all congratulate the lucky lady!



Program Calendar

Spruill Center for the Arts, Rm 4, 7:00-9:00 pm 2nd Wednesdays

August 14: Jill Sharp presents on internet marketing

September 11: Dallas Vinson presents on bench tools (tentative)

October 9: Izabela Sliwinska Presents on 3D printing (tentative)

November: TBD

December: Third Annual Holiday Party!