

List of items needed for Alberta Aviation Museum exhibits

Logs and/or aged wood to build small (8 by 10 feet) log cabin (must be without wood worms etc.)



Early 1900s style (8 by 10 feet) wooden storage shed/or aged wood to build one (must be without wood worms etc.)



Small (4 to 8 inch) and large (up to 20 inch) rocks



Male mannequins (complete and of professional quality with fully movable hands, legs etc.)



1800s-1920s style small and large wooden barrels (preferably aged, old, any condition)



1890s-1920s style small gasoline cans and tin containers



1890s-1920s type funnels (large and small)



1800s-1930s style ropes various thicknesses and lengths (white or brown in colour)



1890s-1920s style tin food storage cans (any size, condition, or type)



1890s-1920s style kerosene and oil storage containers



1890s-1920s style vintage camping enamel cookware (blue, can have some surface rust)



1890s-1920s style shipping/cargo boxes and bags



1890s-1920s style prospector's stove with pipe (can be rusted)



1920s style worker's/mechanic's clothing (jackets, shirts, hats, boots etc.)



1920s/1930s bush-pilot style jackets, coats, boots, pants, gloves etc.



1920s/1930s style long leather coats (as used by Kathrine Stinson/early aviators, brown or black)



1890s-1920s style two-man saws (large and small, can be rusted)





1890s-1920s style axes (large and small, can be rusted)



1890s-1920s style pickaxes (large and small, can be rusted)



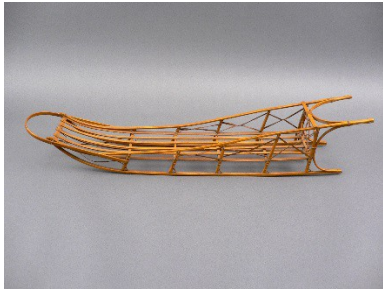
1890s-1920s style shovels (can be rusted)



1890s-1920s style general prospector's/camping gear (can be rusted)



1890s-1920s style wooden dog sled (aged/old any condition)



1860s-1920s style large glass-plate type camera preferably with tripod (any condition)



1920s style mail/cargo sacks



If you have any of these items to donate for our exhibits, please contact us at:  
[curator@albertaaviationmuseum.com](mailto:curator@albertaaviationmuseum.com) or phone 780-451-1175.