



License Plate Readers: Technology Transforming Public Safety

Advanced technology that's revolutionizing how we monitor vehicles and enhance public safety through automated data collection and analysis.

What are License Plate Readers?



Automated Capture

Specialized cameras that automatically photograph license plates of passing vehicles.



OCR Technology

Converts visual plate information into text data using optical character recognition.



Instant Verification

Checks plate numbers against databases in real-time to identify vehicles of interest.



Multiple Applications

Used in law enforcement, parking management, and traffic monitoring systems.



How License Plate Reader Technology Works



Image Capture

High-speed cameras snap photos of license plates at speeds up to 100 mph.



Text Conversion

AI algorithms convert plate images to alphanumeric characters.



Database Matching

System checks converted text against watchlists and databases.



Alert Generation

Notifications sent if plate matches records of interest.



Stakeout

Location Report

TARGET LICENSE PLATE: NONE ENTERED

Make: Model: -All- Year: Color:

Date range searched: From 4/7/2025 12:00:00 AM To 4/8/2025 11:59:59 PM

Loc: # 1: 4572 Tamiami Trl N, Naples, FL 34103, USA

First Visit: 04/07/2025

Number of Visits: 18

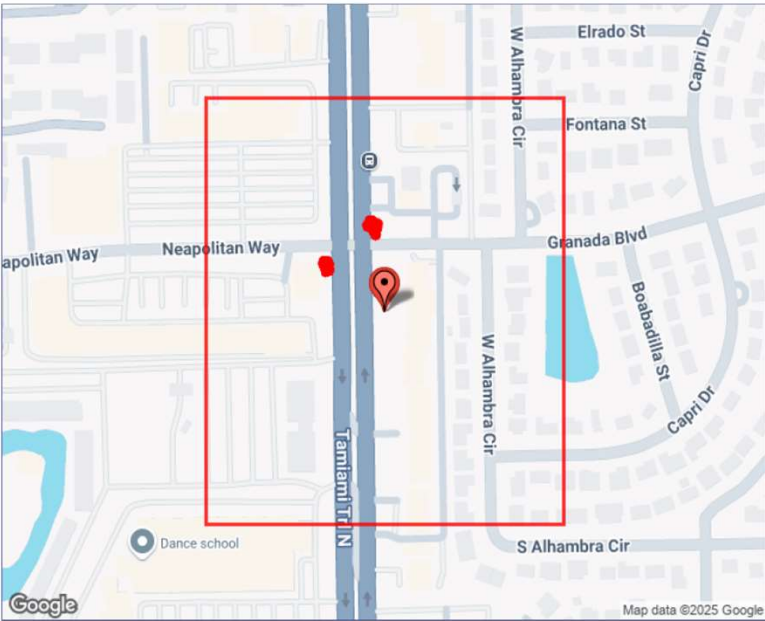
Total Plates: 8593

Last Visit: 04/07/2025

Number of Visits Target Scanned: 0

Date of Target Plated
Scanned:

Date Of Report: 04/07/2025



PAGE SUMMARY

Technical Capabilities and Accuracy



99%

Accuracy Rate

In optimal lighting and weather conditions.

250,000

Average plate reads per day within the City of Naples

24/7

Operation Time

Continuous functioning with infrared for nighttime.

200

Plates Per Second

Maximum processing capacity of advanced systems.

100mph

Vehicle Speed

Maximum speed for accurate plate capture.

Law Enforcement Applications



Stolen Vehicle Recovery

Instantly identifies stolen vehicles passing by equipped patrol cars or fixed camera locations.



Criminal Investigations

Tracks vehicle movements related to crimes, creating valuable location evidence.

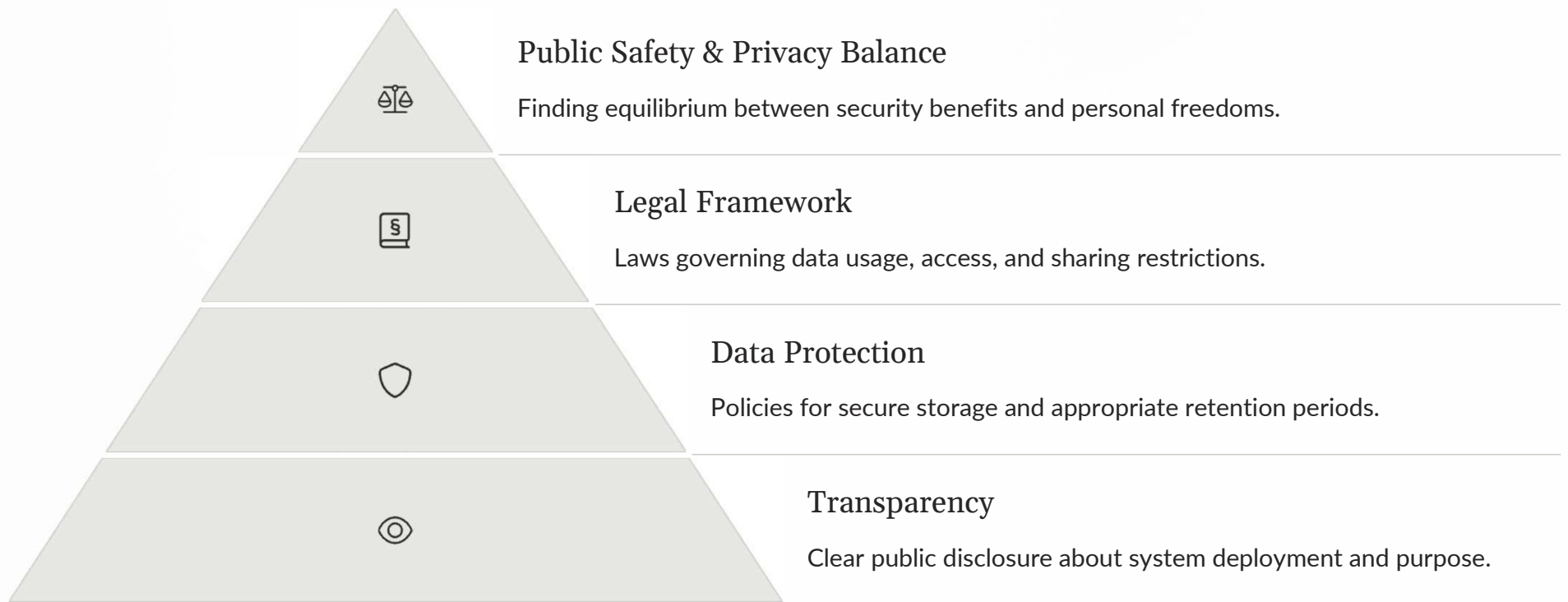


Missing Persons

Supports Amber and Silver alerts by identifying vehicles associated with abductions or missing people.



Privacy and Ethical Considerations



Naples Police Policies Regarding LPR

- The city of Naples police department has established guidelines for the implementation, installation, training and use of License Plate Reader (LPR) technology and equipment to scan, detect, and identify license plate numbers. The LPR system is restricted to legitimate law enforcement uses for the purpose of furthering law enforcement goals and enhancing public safety to include but not limited to providing information to officers that will assist in on-going criminal investigations, crime prevention, crime detection, the apprehension of wanted persons, the recovery of missing and endangered persons and the identification of stolen vehicles entering or exiting the city.
- Access to the system requires that in order for an individual to query data stored in this server, the individual must be FCIC certified and a sworn officer or vetted employee that has had a background check that meets FDLE access standards
- The police department has established a retention period for Data captured of at least 90 days, however not greater than that allowed by f.s.s. 316.0778 (3 years). Data stored on the LPR server is protected under F.s.s 316.0777 and is governed by exemption to the public records statute, F.s.s. 119, and is limited on its release. The release is limited to:
 - A criminal justice agency in performance of official duties.
 - Information related to a license plate registered to an individual may be disclosed to the individual unless such information constitutes active criminal intelligence information or active criminal investigative information.
- The policy meets and/or exceeds the guidelines established by the criminal and juvenile justice information systems council.

-General Order 137

Surveillance Technologies Combined



License Plate Readers

Automatic license plate recognition systems capture and analyze license plates, providing valuable information for crime investigations.



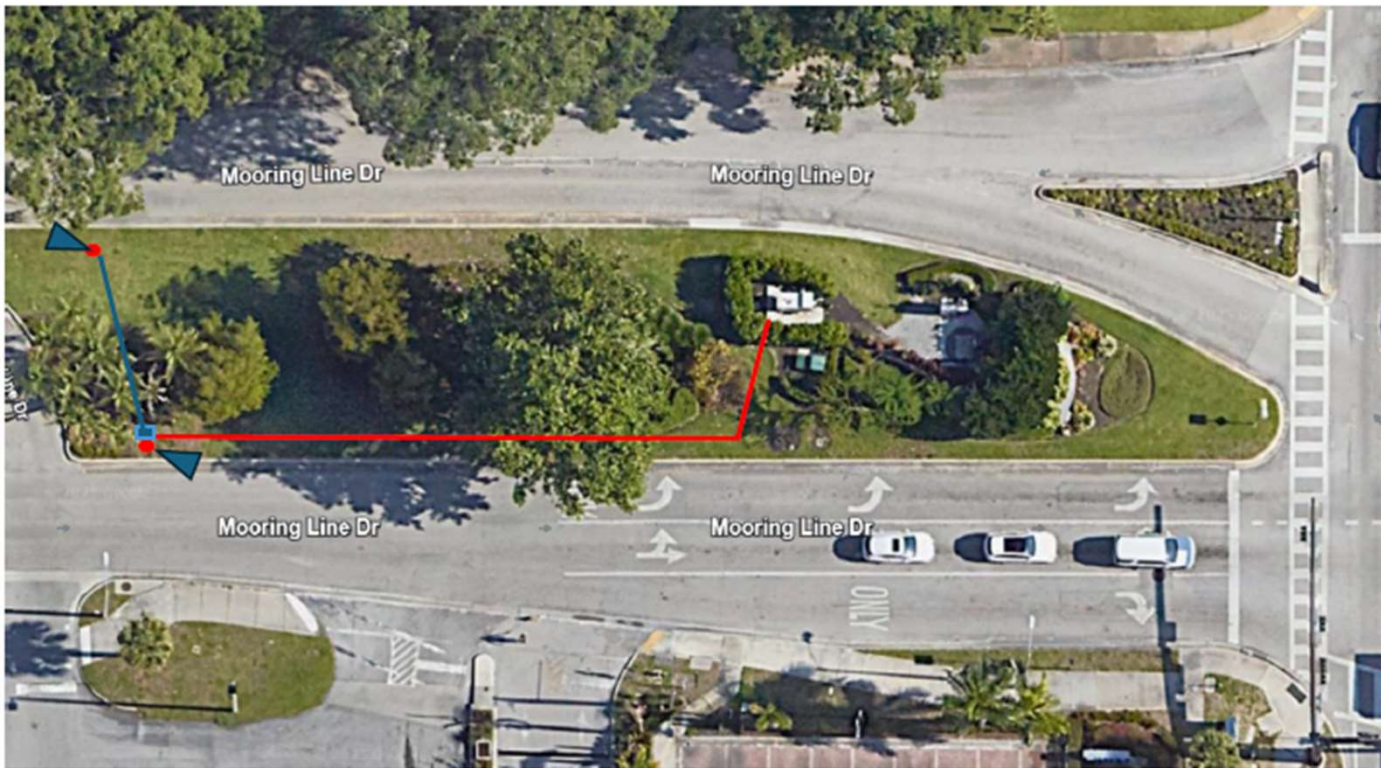
Video Surveillance Systems

Video surveillance systems capture real-time footage, providing valuable evidence and insights into criminal activity.

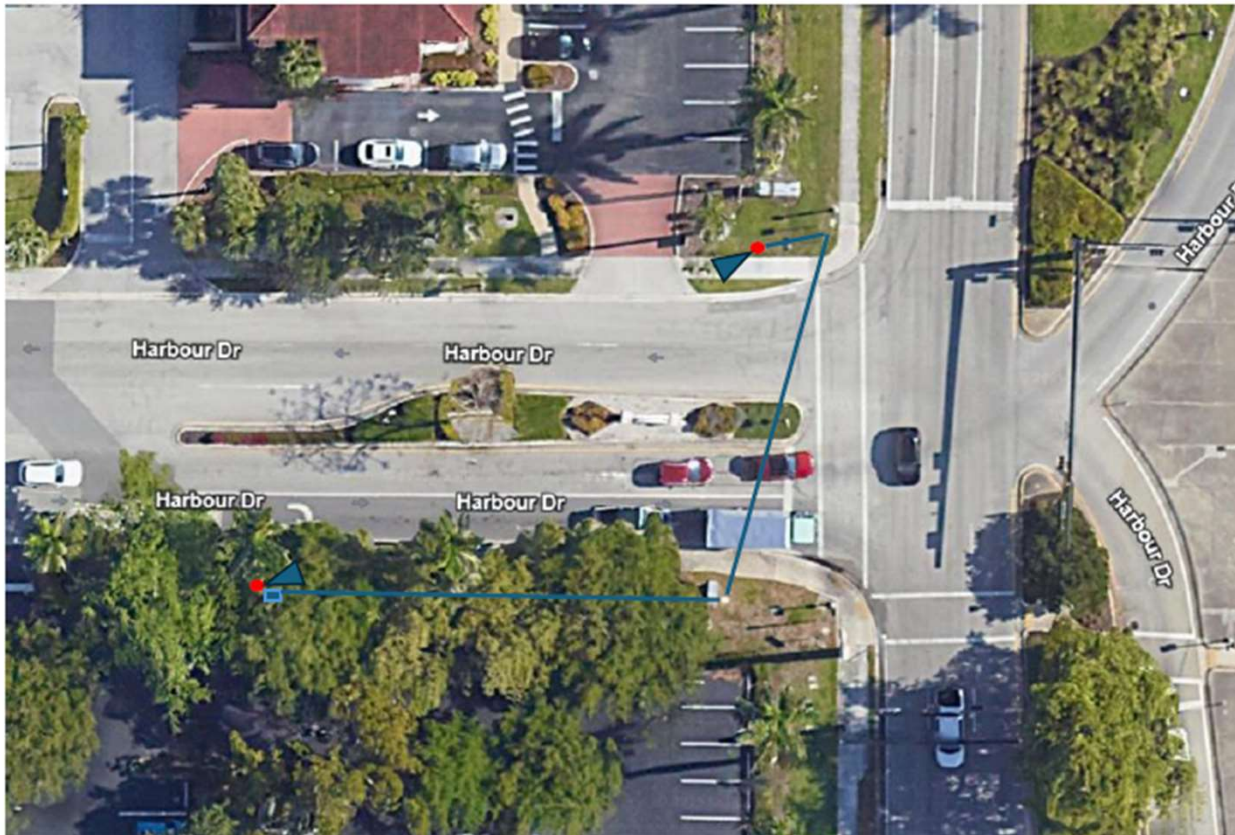
Purposed Entry Points

In suggested order

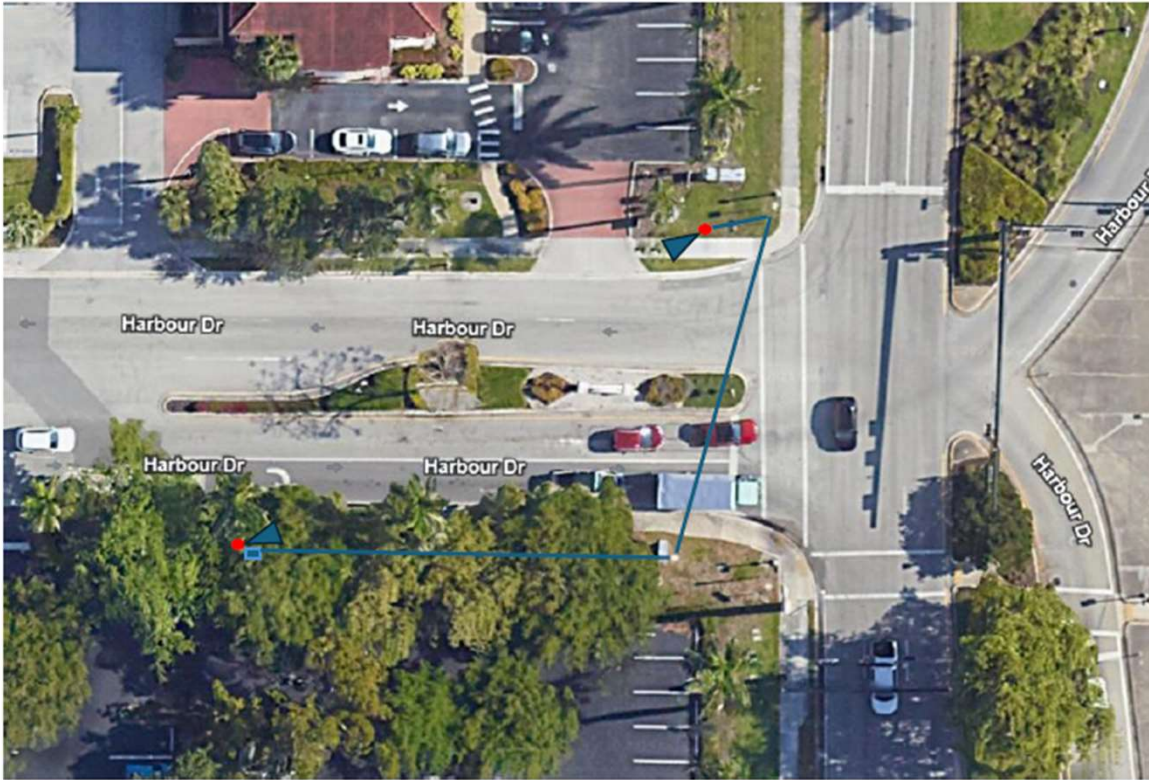
1. Mooring Line Dr / US-41



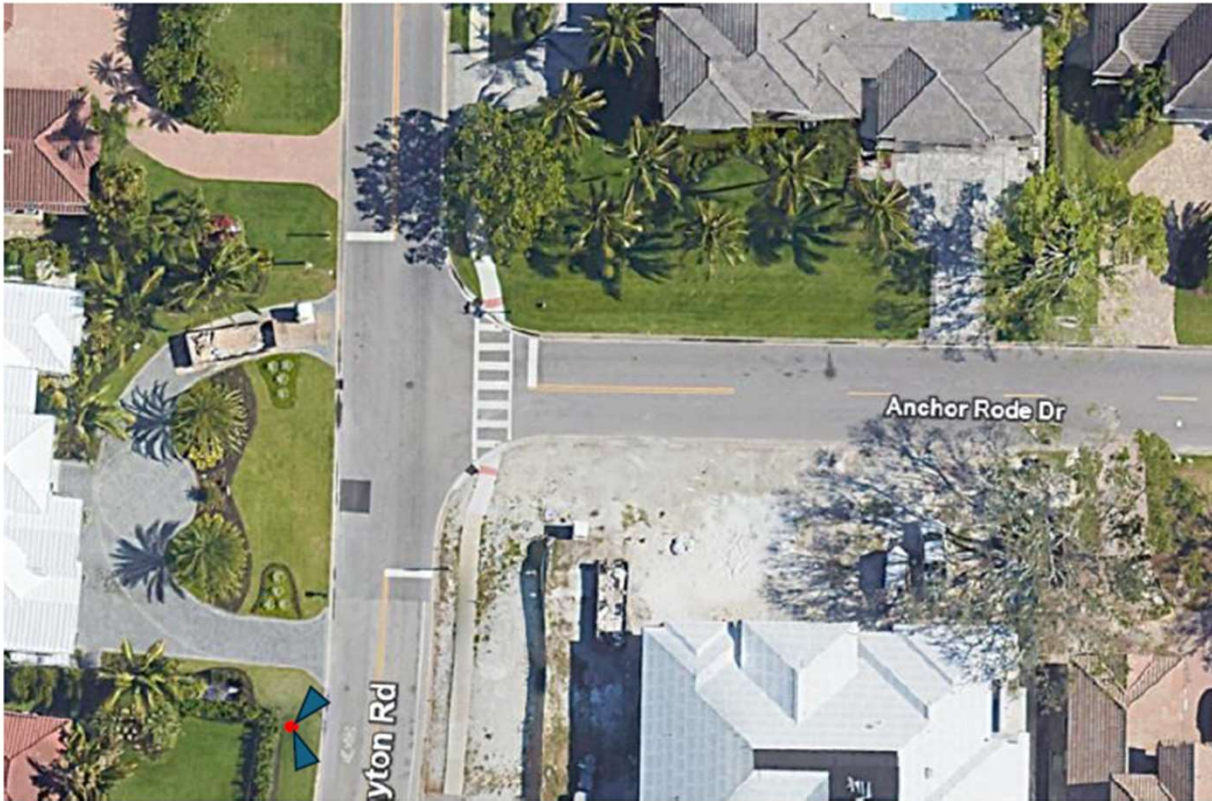
2. Harbour Dr / US-41



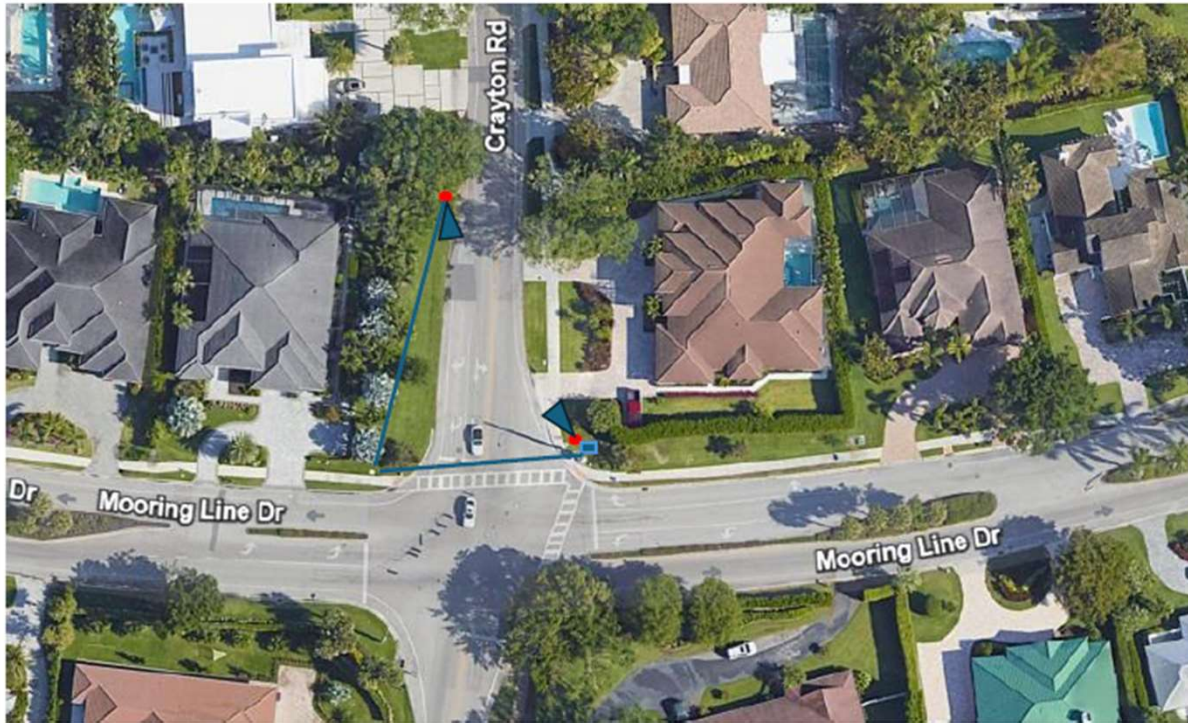
3.Anchor Rode / US-41



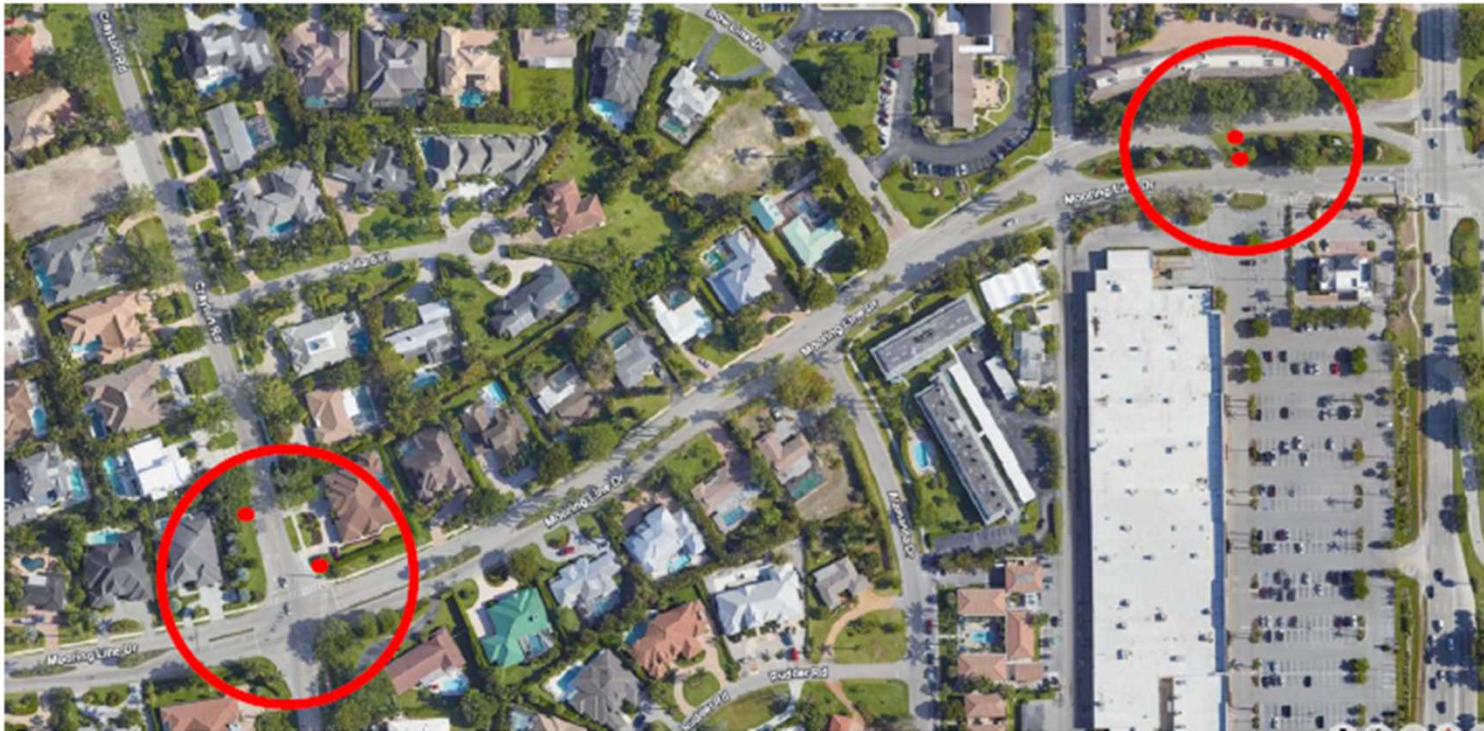
4.Anchor Rode / Crayton



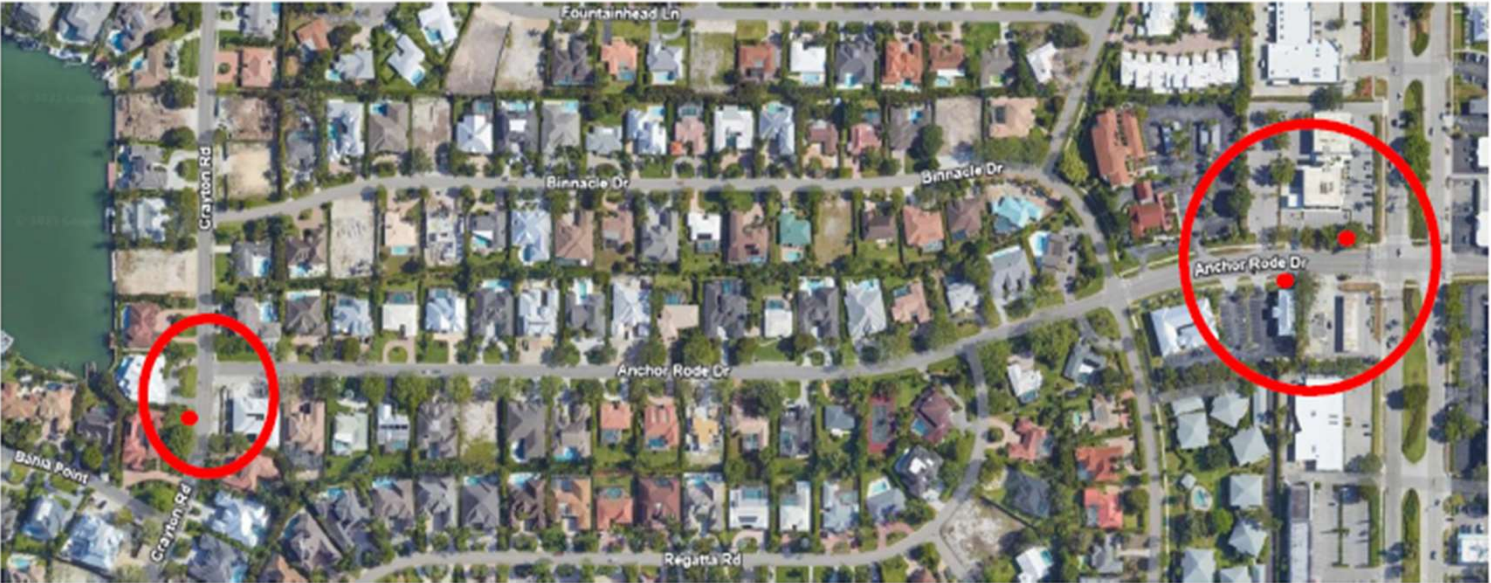
5. Mooring Line Dr / Crayton Rd



Mooring Line Overview



Anchor Rode Dr Overview



Cost to Complete LPR and Camera Install

To complete sites 1, 2 and 3 the total estimated cost is \$ 110,000

To complete sites 4 and 5 the total estimated cost is \$ 79,000

To complete all sites the total estimated cost is \$ 189,000



Detective Nick Williams
nwilliams@naplesgov.com