



**BRAIN INJURY  
ASSOCIATION**  
OF MARYLAND

PRESENTS



# MOVING FORWARD

— TOGETHER —

• BIAMD •

**2022 BIAMD ANNUAL CONFERENCE**

DoubleTree, Pikesville

Pikesville, MD

May 12-13, 2022

# *Join the Brain Injury Association of Maryland for Our Annual Educational Conference*

---

## **Who Attends:**

- Physical Therapists
- Occupational Therapists
- Speech - Language Pathologists
- Nurses
- Social Workers
- Case Managers
- Rehabilitation Counselors
- Lawyers
- Psychologists
- Licensed Clinical Professional Counselor
- Neuropsychologists
- State Agencies Representatives
- Doctors
- Family Members
- Caregivers
- Individuals living with a brain injury

## **Conference Location**

For the first time, BIAMD's 2022 Annual Conference will be held at the **DoubleTree, Pikesville**. All meeting and Exhibitor space at the DoubleTree, Pikesville will again be easily accessible on one floor. DoubleTree features a large general session room and conveniently located break-out rooms, nice open common space for Exhibitor booths adjacent to the dining area, and newly appointed guest rooms. The hotel has a fitness center and an outdoor pool and is conveniently located off of I-695.

## **Why Should I Exhibit at BIAMD's Annual Educational Conference?**

BIAMD's Conference has grown every year. This is a **cost-effective outreach** opportunity to develop new business leads and contacts, while enhancing existing relationships with a targeted, actively engaged, audience of over 450 attendees who need your services. It is a great showcase for the following:

- Providers of medical services including inpatient, outpatient, and community levels
- Durable medical equipment suppliers
- Government health and social service programs who serve individuals with disabilities
- Attorneys, Workers' Compensation Companies, and Case Managers
- Banks, and Insurance Companies

## **Business Development:**

Engage with over 450 attendees to develop new business leads and contact and enhance existing relationships. Explain and demonstrate your products and services for attendees so they understand how you can help. Build your mailing list and stay in touch after the conference.

## **Inclusion in BIAMD's resource database:**

Send us a description of the services and devices that you provide, and we will ensure that we include your current offerings in our resource database and refer people seeking information and assistance when appropriate.

## **Networking:**

Expand your network and build contacts in the brain injury community throughout Maryland and beyond. Meet local and national experts in the field. Chat with a diverse group of professionals, people living with a brain injury, their family members and other exhibitors.

## **Education**

Get updated information about current research and innovations in the brain injury field from local and national experts. Attend sessions on a wide array of topics related to brain injury research, rehabilitation, caregiving, legal concerns, and more.

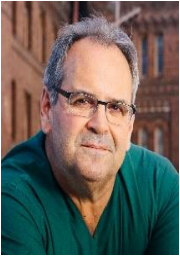
## **Traffic Builder**

All conference participants will receive an "Exhibitor Bingo" card. Participants must visit exhibitor booths and have their bingo card stamped in order to qualify for conference door prizes. This "traffic builder" helps increase traffic flow and ensures exposure for all conference exhibitors. We will also provide time during the closing keynote session to award individual exhibitor prizes.

# *Keynote Speakers*

---

## **Opening Keynote Speaker on Thursday, May 12, 2022**



Geoffrey T. Manley, MD, PhD is the Chief of Neurosurgery at Zuckerberg San Francisco General Hospital (ZSFG) where he co-directs the UCSF Brain and Spinal Injury Center and is Professor and Vice Chairman of Neurosurgery at the University of California, San Francisco (UCSF). Dr. Manley is an internationally recognized expert in neurotrauma. In addition to a robust clinical practice at ZSFG, San Francisco and the Greater Bay Area's level 1 trauma center, he coordinates and leads national and international clinical research efforts in the study of the short- and long-term effects of traumatic brain injury (TBI). Building on the success of the seminal, national longitudinal study, TRACK-TBI, Geoff, as Contact Principal Investigator, along with a nationwide team of TBI experts, has recently launched the TRACK-TBI NETWORK, an innovative, precision-medicine driven consortium that will test Phase 2 drugs for TBI. The TRACK-TBI studies have created a modern precision medicine information common for TBI that integrates clinical, imaging, proteomic, genomic, and outcome biomarkers to drive the development of a new TBI disease classification system, which could revolutionize diagnosis, direct patient-specific treatment, and improve outcomes. His nearly 300 published manuscripts reflect a wide range of research interests from molecular aspects of brain injury to the clinical care of TBI. He sits on the National Academies of Science, Engineering and Medicine's Committee on VA Examinations for Traumatic Brain Injury and has served as a consultant for the Prehospital Guidelines Committee for the World Health Organization and on numerous clinical research committees for the National Institutes of Health, Centers for Disease Control, and Department of Defense

## **Closing Keynote Speaker on Thursday, May 12, 2022**



Martin Kerrigan sustained a traumatic brain injury in 1998. After his TBI Martin became a special education teacher. Martin received both his master's and Educational Specialist degrees in Special Education with an Emphasis in Acquired Brain Injury from George Washington University. He currently sits on the Maryland Traumatic Brain Injury Advisory Board where he has serves in the role of chairperson. Martin regularly presents on brain injury topics including working with students with brain injury and brain injury and substance abuse. He also facilitates a weekly support group for individuals with co-occurring brain injury and substance abuse issues. Martin has also worked with individuals with brain injuries helping them figure out their new way of life.

## **Opening Keynote Speaker on Friday, May13, 2022**



Ms. Katherine M. Lee, MS, CRNP, ANP-BC, currently serves as the Director of Casualty Management Policy & Programs and is the lead for the US DoD Warfighter Brain Health program supporting the Deputy Assistant Secretary of Defense for Health Readiness Policy and Oversight. She brings considerable clinical, educational and research experience in the field of neuroscience and neurotrauma to include more than 200 regional, national and international presentations and more than 30 peer-reviewed publications. Ms. Lee has served in a variety of leadership, advisory and operational roles in the US Department of the Army and US Department of Defense for over 15 years; including the Assistant Chief of the Defense and Veterans Brain Injury Center (DVBIC), Deputy Director for the Defense Centers of Excellence for Psychological Health and Traumatic Brain Injury; Deputy Director for the Clinical and Educational Affairs Office for DVBIC and the manager of the Office of Clinical Standards at DVBIC. Prior to working in Washington DC, Ms. Lee worked in 2 academic/level I trauma centers as a nurse practitioner/clinical care coordinator at the University of Louisville Hospital; and clinical research coordinator in the Division of Neurosurgery at the Medical College of Virginia Hospitals/Virginia Commonwealth University. Ms. Lee holds both bachelor's and master's degrees in nursing from Virginia Commonwealth University, as well as a Bachelor of Science in family and child development from Virginia Tech University. She has earned the following certification: Adult Nurse Practitioner (ANP) through the American Nurses Credentialing Center

## **Closing Keynote Speaker on Friday, May 13, 2022**



Eric Washington sustained a concussion and a spinal cord injury while playing football for the University of Kansas. After recovering from his injury, he graduated with a bachelor's degree in Applied Behavioral Sciences. Today, he is a passionate advocate for TBI survivors of color, and TBI survivors who are homeless. Eric has also served as a faculty member on the NCAPPS Brain Injury Learning Collaborative and was instrumental in supporting brain injury survivor groups in Colorado.

# 2022 Annual Conference Exhibitor Levels

---

## \$14,900 Champion Level

- ◆ Listing as Champion in conference material and in the Ballroom where general sessions are held and several locations throughout the Conference Center.
- ◆ Prominent, oversized space in Exhibit Area consisting of two draped, 6' tables and chairs.
- ◆ Full page ad on inside front or back cover or back outside cover of Conference Program; name on front cover. Black and white artwork due by April 15, 2022.
- ◆ Name and logo on front of conference registration brochures.
- ◆ **50 conference registration credits (includes staff at exhibitor booth).**
- ◆ Ten additional conference registration credits at the reduced rate of \$95 each.
- ◆ Distribute your company's brochure and/or give-away.
- ◆ Recognition on BIAMD Contributor/Sponsor sign.
- ◆ Special acknowledgment in at least 5 issues of #5ThoughtsFriday, BIAMD's electronic newsletter and a link on BIAMD's new website.
- ◆ Inclusion on "Exhibitor Bingo Card", which encourages conference participants to visit all sponsors for the chance to win a prize.

## \$9,500 Corporate Partner Level

- ◆ Listing as Corporate Partner in conference material and in the Ballroom where general sessions are held and several locations throughout the Conference Center.
- ◆ Prominent, oversized space in Exhibit Area consisting of two draped, 6' tables and chairs.
- ◆ Full page ad on inside front or back cover or back outside cover of Conference Program; name on front cover.
- ◆ Black and white artwork due by April 15, 2022.
- ◆ Name and logo on front of conference registration brochures
- ◆ **Sixteen conference registration credits (includes staff at exhibitor booth).**
- ◆ Ten additional conference registration credits at the reduced rate of \$95 each.
- ◆ Distribute your company's brochure and/or give-away.
- ◆ Recognition on BIAMD Contributor/Sponsor sign.
- ◆ Special acknowledgment in at least 5 issues of #5ThoughtsFriday, BIAMD's electronic newsletter and a link on BIAMD's new website.
- ◆ Inclusion on "Exhibitor Bingo Card", which encourages conference participants to visit all sponsors for the chance to win a prize.

## \$7,500 Diamond Level

- ◆ Listing as Presenting Sponsor in conference material and in the Ballroom where general sessions are held and several locations throughout the Conference Center.
- ◆ Prominent, oversized space in Exhibit Area consisting of two draped, 6' tables and chairs.
- ◆ Full page ad on inside front or back cover or back outside cover of Conference Program; name on front cover. Black and white artwork due by April 15, 2022.
- ◆ **Fourteen conference registration credits (includes staff at exhibitor booth).**
- ◆ Eight additional conference registration credits at the reduced rate of \$95 each.
- ◆ Opportunity to distribute your company's brochure to all conference participants at registration.
- ◆ Recognition on BIAMD Contributor/Sponsor sign.
- ◆ Special acknowledgment in at least 4 issues of #5ThoughtsFriday, BIAMD's electronic newsletter and a link on BIAMD's new website.
- ◆ Inclusion on "Exhibitor Bingo Card", which encourages conference participants to visit all sponsors for the chance to win a prize.

## \$5,000 Platinum Level

- ◆ Listing as a Keynote Sponsor for one of the general sessions in conference material and on podium in Ballroom.
- ◆ Preferred oversized space in Exhibit Area consisting of two draped, 6' tables and chairs.
- ◆ **Twelve conference registration credits (includes staff at exhibitor booth).**
- ◆ Eight additional conference registration credits at the reduced rate of \$95 each.
- ◆ Opportunity to distribute your company's brochure and/or give-away in conference tote distributed to all conference participants at registration.
- ◆ Logo or name on nametag for all participants, speakers and Exhibitors.
- ◆ Recognition on the BIAMD Contributor/Sponsor sign.
- ◆ Full page ad in the Conference Program. Black and white artwork due by April 15, 2022.
- ◆ Special acknowledgement in at least 3 issues of #5ThoughtsFriday, BIAMD's electronic newsletter which is sent using Constant Contact, an email marketing program, and a link on BIAMD's new website.
- ◆ Inclusion on "Exhibitor Bingo Card" which encourages conference participants to visit all sponsors for the chance to win a prize

# 2022 Annual Conference Exhibitor Levels

---

## \$3,000 Gold Level

- ◆ Listing as a Conference Partner in conference material and inside and outside of a breakout room.
- ◆ Preferred oversized space in Exhibit Area consisting of two draped, 6' tables and chairs.
- ◆ **Eight conference registration credits (includes staff at exhibitor booth).**
- ◆ Four additional conference registration credits at the reduced rate of \$95 each.
- ◆ Logo or name on name tag for all participants, speakers and Exhibitors.
- ◆ Recognition on the BIAMD Contributor/Sponsor sign.
- ◆ Full page ad in the Conference Program. Black and white artwork due by April 15, 2022.
- ◆ Special acknowledgment in at least 3 issues of #5ThoughtsFriday, BIAMD's electronic newsletter which is sent using Constant Contact, an email marketing program, and a link on BIAMD's new website.
- ◆ Inclusion on "Exhibitor Bingo Card" which encourages conference participants to visit all sponsors for the chance to win a prize.

## \$1,500 Silver Level

- ◆ Listing as a Lunch Sponsor, including name/logo on table-top signage at lunch.
- ◆ Draped, 6' table and chairs in Exhibit Area (if you require a larger table or more space, please see information about Exhibitor space on page 7, 4 and 6 to customize your space).
- ◆ **Four conference registration credits (includes staff at exhibitor booth).**
- ◆ Six conference registration credits at the reduced rate of \$95 each.
- ◆ Half page ad in the Conference Program. Black and white artwork due by April 15, 2022.
- ◆ Special acknowledgement in at least 3 issues of #5ThoughtsFriday, BIAMD's electronic newsletter which is sent using Constant Contact, an email marketing program, and a link on BIAMD's new website.
- ◆ Inclusion on "Exhibitor Bingo Card" which encourages conference participants to visit all sponsors for the chance to win a prize.

## \$1,195 Bronze Level

- ◆ Listing as a Breakfast Sponsor, including name/logo on breakfast signage.
- ◆ Draped, 6' table and chairs in Exhibit Area (if you require a larger table or more space, please see information about Exhibitor space on page 7, 4 and 6 to customize your space).
- ◆ **Four conference registration credits (includes staff at exhibitor booth).**
- ◆ Four additional conference registration credits at the reduced rate of \$95 each.
- ◆ Half-page ad in Conference Program Book. Black and white artwork due by April 15, 2022.
- ◆ Special mention in #5ThoughtsFriday, BIAMD's electronic newsletter which is sent using Constant Contact, an email marketing program, and a link on BIAMD's new website.
- ◆ Inclusion on "Exhibitor Bingo Card" which encourages conference participants to visit all sponsors for the chance to win a prize.

## \$895 Emerald Level

- ◆ Draped, 6' table and chairs in Exhibit Area (if you require a larger table or more space, please see information about Exhibitor space on page 7, 4 and 6 to customize your space).
- ◆ **Two conference registration credits (includes staff at exhibitor booth).**
- ◆ Two additional conference registration credits at the reduced rate of \$95 each.
- ◆ Business card ad in Conference Program. Black and white artwork due by April 15, 2022.
- ◆ Recognition on BIAMD Exhibitor sign and in Conference Program.
- ◆ Listing on BIAMD's new website.
- ◆ Inclusion on "Exhibitor Bingo Card" which encourages conference participants to visit all sponsors for the chance to win a prize.



# 2022 Annual Conference

## Registration Form

Complete registration form and mail or fax to

**BIAMD 2200 Kernan Drive Baltimore, MD 21207 (410)448-3541 fax**

**Full payment is expected by April 15, 2022**

### Exhibitor Levels

Strategic Partner	\$24,500 _____	Gold	\$3000 _____
Champion	\$14,900 _____	Silver	\$1500 _____
Conference Partner	\$9500 _____	Bronze	\$1195 _____
Diamond	\$7500 _____	Emerald Level	\$895 _____
Platinum	\$5000 _____		

### Conference Program (w/out Sponsorship)

Full page ad	7" x 10"	\$270 _____
Half page ad	7" x 4-3/4"	\$170 _____
Business card ad	3-1/2" x 2"	\$120 _____

### Other

We require an electrical outlet: Yes \_\_\_\_\_ No \_\_\_\_\_

We would like to donate to the Frances Bateson Dexter Scholarship Fund: \$ \_\_\_\_\_

We will be donating an item to the Silent Auction: Yes \_\_\_\_\_ No \_\_\_\_\_

The item we will be donating to the Silent Auction is: \_\_\_\_\_

We will be bringing a door prize item: Yes \_\_\_\_\_ No \_\_\_\_\_

The door prize item we are donating is: \_\_\_\_\_

### Organization Information

Organization Name: \_\_\_\_\_  
(name will be published exactly as shown)

Contact Person: \_\_\_\_\_ Title: \_\_\_\_\_

Mailing Address: \_\_\_\_\_

City: \_\_\_\_\_ State: \_\_\_\_\_ Zip: \_\_\_\_\_

Phone: \_\_\_\_\_ Fax: \_\_\_\_\_ Email: \_\_\_\_\_

I have read and understand the Conference Terms and Conditions of Agreement listed in this prospectus. I understand what benefits, including the number of free and reduced registrations, I (or my company) am (is) entitled to.

Signature: \_\_\_\_\_

Payment options: \_\_\_\_\_ Check (payable to **BIAMD**) \_\_\_\_\_ Visa \_\_\_\_\_ MasterCard \_\_\_\_\_

Card Number: \_\_\_\_\_ Expiration Date: \_\_\_\_\_

Name on Card: \_\_\_\_\_ CVC # (on back) \_\_\_\_\_

Billing Address: \_\_\_\_\_

Signature authorizing charge to card: \_\_\_\_\_

# Conference Terms & Conditions of Agreement

## 1) Exhibitor Staffing

Marketing or other personnel who staff exhibitor booths must complete a registration form. Each exhibitor can determine whether exhibit staff members will be covered by the registration included as part of exhibitor benefits, or whether they'll be covered instead by fees paid for additional registrations. All participants sent by an exhibitor must be registered and their costs covered.

## 2) Assignment of Space and Payment

Booths will be assigned by BIAMD upon receipt of signed Conference Registration Form and payment. All space will be assigned based on date of receipt and level of sponsorship. Full payment is required with the signed agreement to qualify for booth assignment.

## 3) Film, Sound Devices, and Lighting

Sound movies, slide shows, or other sound devices should be turned to conversational level and must not be objectionable to neighboring Exhibitors. Any equipment that emits excessive noise must be run intermittently for specific demonstrations only. BIAMD reserves the right to restrict the use of glaring lights of objectionable lighting effects.

## 4) Exhibitor Space

Sponsors at the Corporate Partner, Diamond, Platinum, and Gold levels will be provided with two 6' tables and chairs. Sponsors at the Silver, Bronze, and Emerald levels will be provided with one 6' table and chairs. If the exhibit includes a pop-up or large floor (not table-top) display, a table will not be provided. If an Exhibitor would like and/or needs additional space, this can be negotiated with BIAMD staff in advance of the conference.

Exhibitors shall in no way infringe upon or take over another Exhibitor's space, public areas, or walk-ways, whether that space is occupied or not.

## 5) Subletting of Space

Only one firm may exhibit in a single space. Furthermore, products from different firms cannot be sold in a single space.

## 6) Standard Booth Equipment

Standard Booth Equipment will consist of a draped 6' x 36" table and chairs. An additional fee of \$25 will be assessed for Silver, Bronze, or Emerald Level sponsors who require Oversized Booth Equipment.

## 7) Fire Safety and Health

The Exhibitor assumes all responsibility for compliance with local, city and state ordinances and Terms and Conditions covering fire, safety and health. Exhibitor provides the necessary shielding or safety items to protect other from equipment that is operable or any other materials, processes or operations which might cause bodily harm. All parts of all displays must meet the specifications of local fire authorities.

## 8) Liabilities

Exhibitor agrees that BIAMD shall not be liable for any damage or liability of any kind or for any damage or injury to persons during the term of this agreement, from any cause whatsoever by reason of use, occupation and enjoyment of exhibit space by

Exhibitor, or any person thereon with the consent of Exhibitor, and the Exhibitor will indemnify and hold harmless BIAMD from all liability whatsoever, caused by negligence or breach of obligation by Exhibitor or its employees or representatives.

## 9) Inability to Perform

If BIAMD should be prevented from holding the exhibit program by any cause beyond its control (such as fire, strikes, Acts of God, etc.) or if it cannot permit the Exhibitor to occupy his space due to circumstances beyond its control, BIAMD will refund to the Exhibitor the amount of the rental paid by the Exhibitor, less a proportionate share of the conference expenses, and BIAMD shall have no further obligation or liability to the Exhibitor.

## 10) Cancellation

Cancellations received in writing on corporate letterhead by the BIAMD office by March 1, 2022, will receive a full refund, less a \$100 processing fee. Cancellations are not accepted after March 1, 2022. Such a cancellation shall be considered a default on the part of the Exhibitor, and any monies paid hereunder shall be retained by BIAMD as liquidated damages.

## 11) Shipments of Freight, Displays or Materials

Please contact:

DoubleTree, Pikesville  
1726 Reisterstown Road  
Pikesville, MD 21208  
855-605-0318

## 12) Educational

Exhibitors must register as conference attendees to receive Continuing Education Credit (CEU) at the BIAMD Annual Conference.

## 13) Amendments

These Terms and Conditions have been formulated for the best interest of the Exhibitors as well as the BIAMD Annual Education Conference and its participants. All matters and questions not covered by these Terms and Conditions may be amended at any time by BIAMD and all amendments that may be so made shall be equally binding on all parties affected by them as by the original Terms and Conditions.

We plan to offer the following CEUs for this conference:

- ♦ Commission for Case Managers
- ♦ Commission for Rehabilitation Counselors
- ♦ Maryland Board of Physical Therapy Examiners
- ♦ Maryland Board of Examiners for Audiologists, Hearing Aid Dispensers, and Speech-Language Pathologists
- ♦ Maryland Board of Occupational Therapy Practice
- ♦ Maryland Board of Professional Counselors
- ♦ American Therapeutic Recreation Association
- ♦ Maryland Workers' Compensation Commission (MD WCC MCRSP)
- ♦ The Maryland Board of Social Work Examiners certifies that this program meets the criteria for Category I continuing education for social workers and associates licensed in Maryland.
- ♦ The Maryland Board of Psychologists
- ♦ Maryland Nurses Association



Non-Profit  
Organization  
US Postage

2200 Kernan Drive  
Baltimore, MD 21207  
[www.BIAMD.org](http://www.BIAMD.org)  
410-448-2924

## **BIAMD Annual Conference 2022 Exhibitor Opportunities**

Each year, businesses like yours spend thousands of dollars to receive name recognition and to place product information in front of the right audience.

***Let the Brain Injury Association of Maryland's  
Annual Conference do that for you!***

May 12-13, 2022

DoubleTree, Pikesville  
1726 Reisterstown Road  
Pikesville, MD 21208



