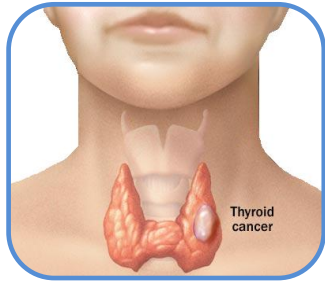
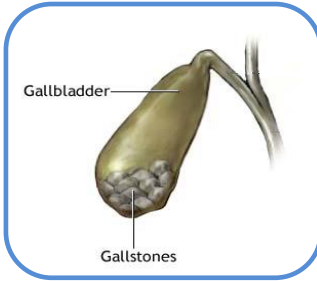


**Thyroid, Gall Bladder, Liver, Kidneys + AFIB and Bone Density**  
family are **free** with the 3 vascular scans. (Bone density ladies only)



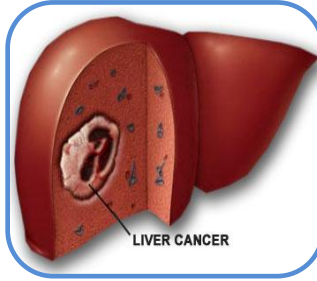
### Thyroid

Scans for cysts or tumors that could be cancer.



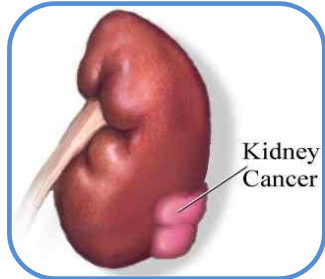
### Gallbladder

Scans for gall stones or sludge in the gall bladder.



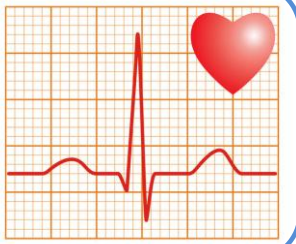
### Liver

Scans for fatty liver, cysts, or tumors that could be cancer.



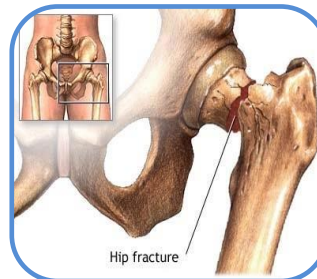
### Kidneys

Scans for cysts or tumors that could be cancer. Also scans for Hydronephrosis, (Fluid backup in the kidney)



### AFIB

Free with full vascular and organ package.  
\$5 as a standalone exam.  
2 lead EKG scans for Atrial Fibrillation.



### Heel Bone Density

Free with full vascular and organ package.  
\$45 as a standalone exam.  
Scans for risk of hip fracture.

Faith



**Texas Mobile Imaging**

*"Early Detection Equals Prevention"*



## St. Timothy's Episcopal Church

**2025**

**Appointments Are Necessary**

**Our Calls Will Originate from  
832-437-6724 or 832-437-6764**

This service is intended as a screening only and in no way should be substituted as a routine checkup with a licensed physician. If you have any symptoms, regardless of the results of the screening, see a physician.

In Texas, a prescription is necessary for these exams.

### Test time approximately 35-45 minutes:

- No food or caffeine 4 hours before testing.
- Taking meds, or diabetic? Eat lightly and take meds.
- Bring a snack if necessary.
- Wear short sleeve outfit. No dresses, skirts. No necklaces
- Wear your mask. Not required but encouraged.

[www.txmobileimaging.com](http://www.txmobileimaging.com)

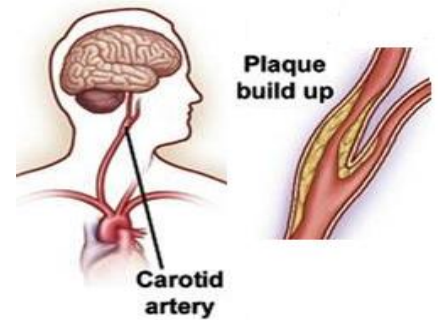
4031 FM 1463 Suite 40 Box 130 Katy, TX 77494

## **(Stroke) Carotid Artery Screening - Color-Flow Doppler Imaging - \$65**

In Just 5 minutes we can detect carotid artery plaque that can cause ischemic stroke.

### **DID YOU KNOW THIS ABOUT STROKE?**

- ❖ 4<sup>th</sup> leading cause of death behind heart attack, cancer and pulmonary disease.
- ❖ 2<sup>nd</sup> leading cause of death in women, more than breast cancer.
- ❖ #1 reason for nursing home admissions in the USA.
- ❖ 80 percent of all stroke victims show no prior symptoms.
- ❖ 75 to 80 percent of all strokes are preventable.

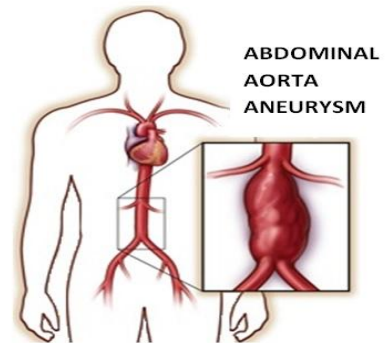


## **Abdominal Aortic Aneurysm Screening - (AAA) - \$65**

In just 5 minutes, we can detect an AAA that can rupture and cause sudden death.

### **DID YOU KNOW THIS ABOUT AAA?**

- ❖ Ruptures are 95% fatal.
- ❖ 1<sup>st</sup> symptom is usually sudden death.
- ❖ 14<sup>th</sup> leading cause of death in the USA.
- ❖ Lucille Ball, Conway Twitty, and Albert Einstein died from it.
- ❖ You can have an AAA the size of a baseball with no symptoms.

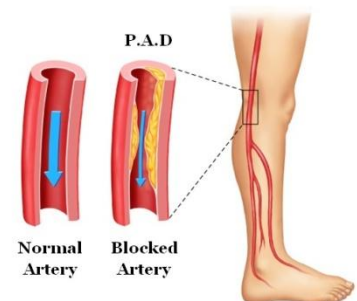


## **P.A.D. Ankle Brachial Index Screening - (ABI) - \$65**

In Just 5 minutes, we can detect blocked arteries in your legs that can lead to amputation.

### **DID YOU KNOW THIS ABOUT PAD?**

- ❖ #1 reason for leg amputation in the USA.
- ❖ If you have PAD, you may have a blocked artery in the heart or brain.
- ❖ If you have PAD, you are 7 to 10 times more likely to have a stroke or heart attack over the next 10 years.



Typically, doctors will not order these scans, and insurance companies will not pay for them, unless you are showing symptoms. If you qualify, a Texas Mobile Imaging Board Certified Radiologist, will order prescriptions and will interpret all vascular, organ, heart rhythm and bone density scans.

Results are mailed directly to you in 3-4 weeks. Critical results will be expedited.

Diagnostic versions of these scans are usually \$500-\$1500 each in a hospital. You will have access to the screenings for:  
**\$145 - For All 3 Vascular Scans**

**All 3 Vascular Scans for \$145**  
Also includes complimentary scans of your Thyroid, Gall Bladder, Liver and Both Kidneys