

JUNE 2026



# PROGRAM GUIDE for members

# SECRETS, STRENGTH & HUMANITY

**SUNDAY NIGHT DRAMAS**  
STARTING JUNE 14 AT 8PM



**DON'T MISS**  
Lee Fields and the  
Expressions in Concert

CONNECT WITH **mpt**



facebook.com/MarylandPublicTelevision



instagram.com/marylandpublictv



YouTube.com/user/MarylandPublicTV



subscribe@[mpt.org/newsletters](http://mpt.org/newsletters)



## Telling stories about our history and heritage

MPT's highly popular series *Chesapeake Collectibles* continues to captivate audiences with remarkable stories about family heirlooms, cherished collectibles, and unexpected flea market finds.

For fans of the long-running series, there's good news. *Chesapeake Collectibles* returns this month for its 13th season. You can watch on MPT and our [mpt.org](http://mpt.org) livestream Mondays at 7:30 p.m., immediately preceding *Antiques Roadshow*. Viewers can also find episodes anytime on our website's online video player and the free downloadable PBS app.

Among this season's highlights are President John F. Kennedy's key to the city of Havre de Grace, the computer that inspired Bill Gates and Paul Allen to start Microsoft, the personal effects of a beloved father's service as a White House butler, and the history of a mysterious society known as the Military Order of the Carabao. These and more surprising items and stories about our history and heritage will be revealed this coming season.

The excitement for *Chesapeake Collectibles* fans continues with the news that registration is now open for the series' season 14 taping event, which takes place on October 3 and 4 at MPT's Owings Mills studios. Registration and attendance details are available on the series website at [mpt.org/programs/chesapeakecollectibles](http://mpt.org/programs/chesapeakecollectibles). The registration fee includes a one-year membership to MPT.

Enjoy the new season of *Chesapeake Collectibles*, and we hope to see you with your prized possessions at our taping weekend in October!

Steven J. Schupak, President & CEO

## MARYLAND PUBLIC TELEVISION

11767 Owings Mills Blvd. | Owings Mills, MD 21117  
410 356-5600 | 800 223-3678

## BOARDS OF DIRECTORS

**MD Public Broadcasting Commission**  
Richard J. Bodorff, *Chair* | Lakeisha D. Lashley, Ed.D.  
Rebecca J. Hanson, Esq., *Vice Chair* | Dr. Kimberly Moffitt  
Beth E. Suarez  
Debra A. Bright, Ed.D. | Bruce A. Wahl  
Robert C. Douglas, Esq. | Ellie K. Wang  
Dr. Carla Hayden | Carey M. Wright, Ed.D.

**MPT Foundation, Inc.**  
Craig Fuller, *Chair* | Daniel M. Freeman  
Beth E. Suarez, *Vice Chair* | Rebecca J. Hanson, Esq.  
Steven J. Schupak, *President* | Irwin Kramer  
Patricia Fitzhugh, *Treasurer* | Dr. Elizabeth Molina Morgan  
Erin Chrest, *Secretary* | Doug Schwab  
Richard J. Bodorff, *Ex Officio* | Henry Stansbury  
Alfred R. Berkeley III | Michael Styer  
Dr. Cynthia Boyle | Tyrone Taborn  
Dr. Shailaja Didolkar | Paul G. Ullmann  
Debbie Driesman | Ellie K. Wang  
Rhea Feikin | Anne West  
Chris Fenger | Patrick Butler, *Chair Emeritus*

## DIRECTORY OF SERVICES

Online video: [mpt.org/video](http://mpt.org/video)  
Program schedules: [mpt.org/schedule](http://mpt.org/schedule)  
Donate online: [mpt.org/support](http://mpt.org/support)  
Concerts & events: [mpt.org/events](http://mpt.org/events)  
Channels: [mpt.org/channels](http://mpt.org/channels)

**Member Services**  
weekdays 9am-4pm  
410 581-4292 | 800 522-8915  
membership@mpt.org  
pledge@mpt.org | 800 222-1292

**Viewer Services**  
weekdays 9:30am-4pm  
Program questions or comments  
410 581-4097 | 800 522-8915  
comments@mpt.org

**Major & Planned Giving**  
Erin Chrest  
410 581-4057 | [echrest@mpt.org](mailto:echrest@mpt.org)

**Corporate Sponsorship**  
Terri Carpenter  
410 581-4302

**Educational Services**  
[Thinkport.org](http://Thinkport.org) | [thinkport@mpt.org](mailto:thinkport@mpt.org)

**Vehicle Donations**  
888 777-9633 | 410 581-4075 | [mpt.org/vehicles](http://mpt.org/vehicles)

**Community Engagement**  
[outreach@mpt.org](mailto:outreach@mpt.org) | [mpt.org/outreach](http://mpt.org/outreach)

**Editorial Director**  
Vicki Hudson

**Program Guide Design & Editorial**  
Novak Birch

## MPT SPOTLIGHT



## Chesapeake Collectibles

New Season Premieres June 1 at 7:30pm

Behind every flea market find and family heirloom is a tale waiting to be told. Our expert appraisers evaluate thousands of items each season, but only a handful make it on the show: rare artifacts with local ties, dazzling works of art collected by unwitting connoisseurs, first editions signed by literary legends, and more. Unpacking these stories is the key to every conclusion, unlocking the answer to the question on everyone's mind: what's it worth?

## CHANNELS



OVER THE AIR		COMCAST	
Annapolis	22.1	Baltimore/	22 (SD)
Frederick	62.1	Washington	812 (HD)
Hagerstown	31.1	Southern PA	12 (SD)
Oakland	36.1		812 (HD)
Owings Mills	67.1	<b>VERIZON</b>	
Salisbury	28.1	22 (SD), 522 (HD)	



OVER THE AIR		COMCAST	
Annapolis	22.2	Baltimore	799
Frederick	62.2	Washington	799
Hagerstown	31.2	Southern PA	799
Oakland	36.2		
Owings Mills	67.2	<b>VERIZON</b>	
Salisbury	28.2	478	



OVER THE AIR		COMCAST	
Annapolis	22.3	Baltimore	269
Frederick	62.3	Washington	269
Hagerstown	31.3	Southern PA	243
Oakland	36.3		
Owings Mills	67.3	<b>VERIZON</b>	
Salisbury	28.3	481	



OVER THE AIR		COMCAST	
Annapolis	22.4	Baltimore	268
Frederick	62.4	Washington	268
Hagerstown	31.4	Southern PA	242
Oakland	36.4		
Owings Mills	67.4	<b>VERIZON</b>	
Salisbury	28.4	480	

For other providers, visit [mpt.org/channels](http://mpt.org/channels) or call Viewer Services at 800 522-8915.

# DECODING CRIMES,

CRIME SCENE-DO NOT ENTER CRIME SCENE-DO NOT ENTER CRIME SCENE-DO NOT ENTER

# DELIVERING JUSTICE

**Drama abounds on Sunday nights,  
and it all starts on June 14!**

First, at 8pm, it's the premiere of *Patience*, Season 2. Patience Evans works in the Criminal Records Office in the city of York. She views the world in a unique way because she has a special gift – she is autistic. DI Bea Metcalf recognizes her talents and takes her under her wing. Patience helps the police tackle a series of challenging cases by bringing her unique insight to crime fighting. In the second season, the series continues to address how neurodivergence is portrayed in the media.

Then, at 9pm, it's the premiere of the final season of *Grantchester*. Season 11 begins in the summer of 1963 – each character standing at a crossroads that will shape their future.

Alphy's growing connection with the bishop's daughter, Meg, coincides with more discoveries about his past and the life he might have lived. Will he find the answers he's been searching for? Geordie enjoys a period of relative calm with Cathy and their family, but a tempting offer from his commanding officer threatens to upend everything. Will he risk losing the life he loves? Leonard, too, faces quiet yet profound change, as caring for a neighbor's son awakens a paternal side he never knew existed, challenging him to reevaluate his purpose. With themes of family, forgiveness, faith, and introspection, *Grantchester's* last chapter promises self-discovery, hope, and transformation.

MASTERPIECE

## PATIENCE

SEASON 2 PREMIERES JUNE 14 AT 8PM

## Grantchester

SEASON 11 PREMIERES JUNE 14 AT 9PM

**LEE FIELDS  
AND THE EXPRESSIONS  
IN CONCERT**



**PREMIERES JUNE 4 AT 8PM**

Hailed by *Rolling Stone* for "his classic American soul sound," Lee Fields is arguably the greatest pure soul singer alive today, and his career has spanned more than five decades. This new concert special features the legendary artist and his band the Expressions performing a high energy set of soul classics, including "Got to Get Through to You," "Forever," and "Sunny," for an enthusiastic live studio audience.

	8:00PM	8:30PM	9:00PM	9:30PM	10:00PM	10:30PM
1 Mon	Antiques Roadshow 250 Years of Americana		Joe Bonamassa: The Spirit of Rory Live from Cork			
2 Tue	Women of World War II: More Untold Stories		Water's Edge: Black Watermen of the Chesapeake			
3 Wed	Life on Earth: Attenborough's Greatest Adventure		The Highwaymen Live at Nassau Coliseum			
4 Thu	Lee Fields and the Expressions in Concert		60s and 70s Soul Celebration			
5 Fri	Dalgliesh S2, E2: Death of an Expert Witness, Pt 2		60s Pop, Rock & Soul			
6 Sat	Magic Moments: The Best of 50s Pop <i>Starts at 6:30pm</i>		Lee Fields and the Expressions in Concert		Joe Bonamassa: The Spirit of Rory	
7 Sun	Great Performances <i>Josh Groban Starts at 6:30pm</i>	Our Favorite Things About Grantchester			Masterpiece Downton Abbey, Season 1: Pt 4	
8 Mon	50 Years with Peter, Paul and Mary				Concert for George	
9 Tue	What's the Story, Wishbone?				Simon & Garfunkel: Central Park	
10 Wed	Nature Equus: Story of the Horse: Origins		This Land Is Your Land			
11 Thu	Great Performances Josh Groban: An Evening at Union Chapel				Viewer Favorite	
12 Fri	Dalgliesh S2, E3: A Certain Justice, Pt 1		Concert for George			
13 Sat	Viewer Favorite					
14 Sun	Patience S2, E1: Vampire		Masterpiece Grantchester: Season 11, E1		Masterpiece Downton Abbey Season 2: Pt 1	
15 Mon	Antiques Roadshow Crystal Bridges Museum of American Art, Hour 1		Becoming American: Philadelphia's Story		The Last Twins	
16 Tue	Finding Your Roots Great Migrations		Becoming Katharine Graham			
17 Wed	Nature Wildheart		NOVA Secrets of the Forest		The Kimberley: Australia's Wild West River of Life	
18 Thu	Turn: Washington's Spies S2, E1: Thoughts of a Free Man		RFDS: Royal Flying Doctor Service Duty of Care		Astrid S4, E7: The Ankou	
19 Fri	Dalgliesh S2, E4: A Certain Justice, Pt 2		American Experience George H.W. Bush: Pt 1			
20 Sat	Facing the Wind		The Changing Face of Elton John		House Music – A Cultural Revolution: American Stories	
21 Sun	Patience S2, E2: Music in the Minster		Masterpiece Grantchester: S11, E2		Masterpiece Downton Abbey: Season 2, Pt 2	
22 Mon	Antiques Roadshow Crystal Bridges Museum of American Art, Hour 3		Space Chase USA		Independent Lens Assembly	
23 Tue	Finding Your Roots The Ties That Bind		Lucy Worsley Investigates: The American Revolution E1: The Break Up		Frontline	
24 Wed	Nature American Horses		NOVA Ancient Desert Death Trap		The Kimberley: Australia's Wild West Tidal Territory	
25 Thu	Turn: Washington's Spies S2, E2: Hard Boiled		RFDS: Royal Flying Doctor Service S3, E8: Accountability		Astrid S4, E8: Guilty	
26 Fri	Dalgliesh S2, E5: The Murder Room, Pt 1		American Experience George H.W. Bush: Pt 2			American Revolution: An Inside Look
27 Sat	Rob Reiner: The Director		The War of 1812			
28 Sun	Patience S2, E3: The Magpie		Masterpiece Grantchester: S11, E3		Masterpiece Downton Abbey: Season 2, Pt 3	
29 Mon	Antiques Roadshow 250 Years of Americana		Lafayette: The Lost Hero		Declarations: Black Americans and the Revolutionary War	
30 Tue	Finding Your Roots Secret Lives		Lucy Worsley Investigates: The American Revolution E2: A Messy Divorce		Frontline	



PREMIERES JUNE 22 AT 8PM

In the harsh winter of 1779, John Donelson commanded a flotilla of 30 flatboats, carrying over 100 settlers, on a perilous, 1,000-mile river expedition from Fort Patrick Henry to colonize what would eventually become Nashville. In this documentary, award-winning photographer John Guider retraced this journey in a hand-built, 14.5-foot motorless rowing sailboat. The film reexamines Nashville's settlement story through previously marginalized voices: the enslaved people who had no choice in the perilous journey, the Cherokee whose lands were invaded, and the rivers themselves, which have been dramatically transformed over two centuries.

	8:00PM	8:30PM	9:00PM	9:30PM	10:00PM	10:30PM
1 Mon	<b>Great Performances</b> Josh Groban: An Evening at Union Chapel			<b>Concert for George</b>		
2 Tue	<b>Our Favorite Things About Grantchester</b>			<b>Solving the Puzzles of the Marlow Murder Club</b>		
3 Wed	<b>Antiques Roadshow</b> 250 Years of Americana			<b>Great Performances</b> Broadway Musicals: A Jewish Legacy		
4 Thu	<b>Women of World War II: More Untold Stories</b>			<b>Life on Earth: Attenborough's Greatest Adventure</b>		
5 Fri	<b>Lee Fields and the Expressions in Concert</b>			<b>Barbra Streisand: Timeless – Live in Concert</b>		
6 Sat	<b>Woody Guthrie at 100! Live at the Kennedy Center</b> Starts at 7:30pm		<b>Luther</b> S1, E9		<b>Ripper Street</b> S5, E2: A Brittle Thread	
7 Sun	<b>Lucy Worsley Investigates: The American Revolution</b> S1, E2: A Messy Divorce Starts at 7:30pm		<b>Michael Palin in North Korea</b>		<b>Pioneers of Television</b> Science Fiction	
8 Mon	<b>Wired for Connection</b>		<b>Reel South</b> Discount Funeral/No Se Ve Desde Aca		<b>Loving John</b>	
9 Tue	<b>If I Could Stay/Si Pudiera Quedarme</b>		<b>Asian Americans</b> Breaking Through		<b>Buskers New York</b>	
10 Wed	<b>Chesapeake Collectibles</b>	<b>America's Test Kitchen</b>	<b>Masterpiece</b> Downton Abbey: Season 1, Pt 4			<b>Hunting the Stone: Suiseki</b>
11 Thu	<b>This Old House</b>	<b>Ask This Old House</b>	<b>Seaside Hotel</b> S10, E5: Resistance and Hope		<b>American Muslims: A History Revealed</b>	<b>Armadillo Man: Jim Franklin</b>
12 Fri	<b>Big Cats 24/7</b> S1, E5		<b>The Puzzle Lady</b> S1, E6		<b>Austin City Limits</b> Norah Jones/Hurray for the Riff Raff	
13 Sat	<b>Concert for George</b> Starts at 7pm		<b>Luther</b> S1, E10		<b>Ripper Street</b> S5, E3: All the Glittering Blades	
14 Sun	<b>Viewer Favorite</b>		<b>Michael Palin in North Korea</b>		<b>Pioneers of Television</b> Sitcoms	
15 Mon	<b>Listen to Me</b>		<b>Reel South</b> Jan Beauboeuf/Police Dive/Teddy		<b>Always Looking: Titus Brooks Heagins</b>	
16 Tue	<b>Patience</b> S2, E1: Vampire		<b>Masterpiece</b> Grantchester: S11, E1		<b>Out in Rural America</b>	
17 Wed	<b>Chesapeake Collectibles</b>	<b>America's Test Kitchen</b>	<b>Masterpiece</b> Downton Abbey: Season 2, Pt 1			
18 Thu	<b>This Old House</b>	<b>Ask This Old House</b>	<b>Seaside Hotel</b> S10, E6: Buy, Sell, and Rosita		<b>American Muslims: A History Revealed</b>	<b>Swing Lo'</b>
19 Fri	<b>Big Cats 24/7</b> S1, E6		<b>Go-Go City: Displacement and Protest in Washington, DC</b>		<b>Austin City Limits</b> Kacey Musgraves	
20 Sat	<b>Artworks</b>	<b>Chesapeake Collectibles</b>	<b>Luther</b> S1, E11		<b>Ripper Street</b> S5, E4: The Dreaming Dead	
21 Sun	<b>Mel Brooks: The Genius Entertainer</b>		<b>Independent Lens</b> Breaking the News			<b>The Committee</b>
22 Mon	<b>Voyage of Adventure: Retracing Donelson's Journey</b>		<b>Reel South</b> Boil That Cabbage Down/Red Sands/George V		<b>Facing the Wind</b>	
23 Tue	<b>Patience</b> S2, E2: Music in the Minster		<b>Masterpiece</b> Grantchester: S11, E2		<b>Invisible Nation</b>	
24 Wed	<b>Chesapeake Collectibles</b>	<b>America's Test Kitchen</b>	<b>Masterpiece</b> Downton Abbey: Season 2, Pt 2		<b>PTSD9-1-1</b>	
25 Thu	<b>This Old House</b>	<b>Ask This Old House</b>	<b>Seaside Hotel</b> S10, E7: Small Changes		<b>Healing a Soldier's Heart</b>	
26 Fri	<b>Big Cats 24/7</b> S2, E1: The Rogue Boys		<b>Captivated</b> E1		<b>Austin City Limits</b> Juanes	
27 Sat	<b>Artworks</b>	<b>Chesapeake Collectibles</b>	<b>Luther</b> S1, E12		<b>Ripper Street</b> S5, E5: A Last Good Act	
28 Sun	<b>The Unlikely Union: A Storytelling Symphony of America</b>				<b>The Bonackers</b>	
29 Mon	<b>The Ship That Turned Back</b>	<b>Troubled Tributary: Patuxent River</b>	<b>Eliades Ochoa: from Cuba to the World</b>		<b>Roadtrip Nation</b>	<b>Roadtrip Nation</b>
30 Tue	<b>Patience</b> S2, E3: The Magpie		<b>Masterpiece</b> Grantchester: S11, E3		<b>Lifeblood: Chesapeake River Stories</b>	

## 1 | MONDAY



- 7:00PM Direct Connection** Live, interactive newsmaker interviews.
- 7:30PM Chesapeake Collectibles** Season 13 premieres with a Pakistani painting, a Pennsylvania-Kentucky rifle, a painted glass lamp, rare vinyl, and a coveted Rolex. *R 7/20 7:30pm, 7/26 1:30pm; 7/22 8pm & 7/25 8:30pm MPT2*
- 8:00PM Antiques Roadshow 250 Years of Americana** A flag quilt, ca. 1880; a Tiffany Studios turtle back glass shade, ca. 1915; and an 1884 Edison light bulb. *R 6/29 8pm, 6/30 12am & 3am; 6/3 8pm & 6/6 6pm MPT2*
- 9:30PM Joe Bonamassa: The Spirit of Rory Live from Cork** Enjoy a tribute concert for Rory Gallagher – a national hero in Ireland who's renowned around the world for his musicianship and stagecraft. *R 6/6 10:30pm; 1.5 hrs.*

## 2 | TUESDAY

- 7:00PM Maryland Farm & Harvest** Weather-hardy wheat, Palmyra Dairy Farms, and the Governors Buy Local Cookout. *R 6/7 6am; 6/5 7:30pm MPT2*
- 7:30PM Outdoors Maryland** Maryland's stretch of Appalachian Trail; learning to live with beavers. *R 6/6 5:30am*
- 8:00PM Women of World War II: More Untold Stories** This documentary highlights the crucial, often overlooked roles of women as the "secret weapon" that won the war. *R 6/4 8pm MPT2*
- 9:30PM Water's Edge: Black Watermen of the Chesapeake** The unique relationship between African Americans and the Chesapeake Bay contains an abundance of untold stories. *1.5 hrs.*

## 3 | WEDNESDAY

- 7:00PM Christopher Kimball's Milk Street Television Easy Enchiladas** Cheese enchiladas with salsa roja, Mexican cowboy beans (frijoles charros), and Mexican-style corn with chili and lime (esquites).
- 7:30PM MotorWeek** The Subaru Outback Wilderness edition and the Audi RS3.
- 8:00PM Life on Earth: Attenborough's Greatest Adventure** In 1976, Sir David Attenborough embarked on a journey to create a documentary of unprecedented scale, changing his life and natural history filmmaking forever. Discover the story behind TV's first wildlife blockbuster: *Life on Earth*. *R 6/4 9:30pm MPT2*
- 9:30PM The Highwaymen Live at Nassau Coliseum** Join Johnny Cash, Waylon Jennings, Kris Kristofferson, and Willie Nelson for this live concert recorded in 1990. *1.5 hrs.*

## 4 | THURSDAY

- 7:00PM J Swanke's Life in Bloom Aloha in Bloom** Travel to Hawai'i to learn about the Spirit of Aloha.
- 7:30PM America's Test Kitchen Savory Mexican Classics** Chiles en nogada, tacos gobernador, and why oil shimmers. *R 6/20 1:30pm*
- 8:00PM Lee Fields and the Expressions in Concert** Lee Fields and the Expressions perform classic soul hits in front of an enthusiastic live audience. *R 6/6 9pm; 6/5 8pm MPT2*
- 9:30PM 60s and 70s Soul Celebration** Legends of 60s and 70s soul music perform their biggest hits. Featuring The Temptations, James Brown, Patti LaBelle, The Chi-Lites, and more. *3 hrs.*

## 5 | FRIDAY

- 7:00PM State Circle** Reporting on top Maryland issues.
- 7:30PM Artworks The Art of Theater** Explore the inner workings of two regional theaters: Baltimore's Everyman Theatre and Washington, DC's Mosaic Theater.
- 8:00PM Dalgliesh S2, E2: Death of an Expert Witness, Pt 2** After a second murder, Dalgliesh and his team dig into the least likely of places to uncover a web of deceit, power struggles, and desperation. *R 6/6 4am*
- 9:00PM 60s Pop, Rock & Soul** Enjoy an all-star concert reuniting legendary singers and groups performing the greatest hits of the 1960s. Among the iconic artists appearing on stage are Davy Jones of The Monkees, Paul Revere & The Raiders, Jefferson Starship, and more. *R 6/6 4pm; 2 hrs.*

- 7:30PM Christina Cooks: Back to the Cutting Board The Life of the Party** Fave and escarole soup and purée of fave with bitter greens.
- 8:00PM Great Performances Josh Groban: An Evening at Union Chapel** Filmed in November 2025, this unforgettable concert film captures a performance by Josh Groban at London's historic Union Chapel. Groban is at the top of his craft as he unveils new songs and unique interpretations of all-time favorites in an intimate, warm setting.
- 10:00PM Concert for George** On November 29, 2002, one year after the passing of music legend George Harrison, a performance tribute was organized in his honor. Held at London's Royal Albert Hall, the momentous evening featured Harrison's songs and music he loved, performed by a lineup that included Paul McCartney, Ringo Starr, Tom Petty, and more. *2 hrs.*

- 7:30PM Christina Cooks: Back to the Cutting Board Oh, Spicy!** Spaghetti assassina and cavatelli with crushed peppers.
- 8:00PM Our Favorite Things About Grantchester** This new PBS special unpacks all the favorite moments that have made this Masterpiece series and its many beloved characters such a hit over the years. With its winning combination of a delightful amateur sleuth, engaging mysteries, and charming village settings, *Grantchester* has become a viewer favorite, particularly among lovers of the English "cozy" style of mystery.
- 9:30PM Solving the Puzzles of the Marlow Murder Club** Celebrate the intrepid crime fighters of The Marlow Murder Club – retired archaeologist Judith Potts, dog walker Suzie Harris, and vicar's wife Becks Starling – who bring their unconventional methods of crime solving to a series of murders. *1.5 hrs.*

- 7:30PM Christina Cooks: Back to the Cutting Board How the Past Informs the Future** Balsamic roasted eggplant steaks and ciauedda.
- 8:00PM Antiques Roadshow 250 Years of Americana** A flag quilt, ca. 1880; a Tiffany Studios turtle back glass shade, ca. 1915; and an 1884 Edison light bulb.
- 9:30PM Great Performances Broadway Musicals: A Jewish Legacy** From Irving Berlin to Stephen Sondheim, and from Fanny Brice to Barbra Streisand, this documentary explores the phenomenon of how Jewish-American songwriters created a uniquely American art form. Narrated by Joel Grey, the film explores the unique role of Jewish composers and lyricists in the creation of the modern American musical. Featuring interviews and conversations with some of the greatest composers and writers of the Broadway stage, *Broadway Musicals: A Jewish Legacy* showcases the work of some of the nation's preeminent creators of musical theater, including George and Ira Gershwin, Lorenz Hart, Richard Rodgers, Oscar Hammerstein II, Leonard Bernstein, and many others. *2 hrs.*

- 7:30PM Christina Cooks: Back to the Cutting Board More Than the Food on Your Plate** Kasha with bowties and tempeh, and crispy chickpea salad.
- 8:00PM Women of World War II: More Untold Stories** This documentary highlights the vital, often forgotten roles of women in the war effort. Meet the American women who built the planes and flew them, fought on the warfront and the home front, cracked codes and broke barriers. The "secret weapon" that helped win the war, they forever changed the world in the process. History comes alive with newly rediscovered interviews and rarely seen archival footage.
- 9:30PM Life on Earth: Attenborough's Greatest Adventure** In 1976, Sir David Attenborough embarked on a journey to create a documentary of unprecedented scale, changing his life and natural history filmmaking forever. Discover the story behind TV's first wildlife blockbuster: *Life on Earth*. *1.5 hrs.*

- 7:30PM Maryland Farm & Harvest** A new generation of wheat, Palmyra Dairy Farm, and the annual Governors Buy Local Cookout.
- 8:00PM Lee Fields and the Expressions in Concert** This concert features the legendary Lee Fields performing a high-energy set of soul classics, including "Got to Get Through to You," "Forever," and "Sunny."
- 9:30PM Barbra Streisand: Timeless – Live in Concert** Enjoy a magical concert filmed on New Year's Eve in 1999 at the MGM Grand Hotel in Las Vegas. Staged as an original Broadway-style musical, the production featured an orchestra conducted by Marvin Hamlisch. *2 hrs.*

6 | SATURDAY



- 6:30PM Magic Moments: The Best of 50s Pop** Hosted by Pat Boone and Phyllis McGuire of the McGuire Sisters.
- 9:00PM Lee Fields and the Expressions in Concert** This concert special features the legendary Lee Fields performing a high energy set of soul classics, including "Got to Get Through to You," "Forever," and "Sunny."
- 10:30PM Joe Bonamassa: The Spirit of Rory Live from Cork** Enjoy a tribute concert for Rory Gallagher – a national hero in Ireland who's renowned around the world for his musicianship and stagecraft. *1.5 hrs.*

7 | SUNDAY

- 6:30PM Great Performances Josh Groban: An Evening at Union Chapel** Josh Groban returns to PBS in a special, personal concert staged in the intimate and historic setting of London's Union Chapel. *R 6/11 8pm*
- 8:30PM Our Favorite Things About Grantchester** This new PBS special unpacks all the favorite moments that have made this Masterpiece series and its many beloved characters such a hit over the years.
- 10:00PM Masterpiece Downton Abbey, Season 1: Pt 4** The heir crisis at Downton Abbey takes an unexpected turn. Anna unearths Bates' mysterious past. Rumors fly about Mary's virtue. Her sister Sybil takes a risk in her secret political life. O'Brien and Thomas plot their exit strategy. *2 hrs.*

8 | MONDAY

- 7:00PM Direct Connection** Live, interactive newsmaker interviews.
- 7:30PM Chesapeake Collectibles** A White House butler, pocket watches, a Marlon Brando portrait, a silver menorah, and Civil War ephemera. *6/10 8pm MPT2*
- 8:00PM 50 Years with Peter, Paul and Mary** Celebrate the impact of the preeminent trio that brought folk music to America's mass audiences.
- 10:00PM Concert for George** On November 29, 2002, one year after the passing of music legend George Harrison, a performance tribute was organized in his honor. Held at London's Royal Albert Hall, the momentous evening featured Harrison's songs and music he loved, performed by a lineup that included Paul McCartney, Ringo Starr, Tom Petty, and more. *R 6/12 9pm; 6/13 7pm MPT2; 2 hrs.*

9 | TUESDAY

- 7:00PM Maryland Farm & Harvest** Joanne heads to Deere Valley Farm where she gets behind the wheel of the combine to bring in the last of the winter wheat. An Air Force veteran and his family are raising Texas Longhorns at Downey Family Farm. Al learns how hops are harvested and brewed. *R 6/14 6am; 6/12 7:30pm MPT2*
- 7:30PM Outdoors Maryland Assateague Island Special** Explore the history and ecosystems of this dynamic coastal environment. *R 6/13 5:30am*
- 8:00PM What's the Story, Wishbone?** Take a behind-the-scenes journey into the creation and lasting legacy of *Wishbone*, the Emmy-winning PBS series that introduced a generation to classic literature through the adventures of a small dog with a big imagination.
- 10:30PM Simon & Garfunkel: The Concert in Central Park** Join the iconic duo and the 500,000 fans who came out for this 1981 concert. *1.5 hrs.*

10 | WEDNESDAY

- 7:00PM Christopher Kimball's Milk Street Television Favorite Forgotten Cakes** Hot milk sponge cake, broken phyllo baklava cake, and invisible apple cake.
- 7:30PM MotorWeek** The Toyota RAV4 and the all-electric Cadillac LYRIQ V.
- 8:00PM Nature Equus: Story of the Horse: Origins** The relationship between man and his noble steed is almost as old as civilization itself. Ever since the mysterious beginning of our extraordinary partnership, horses helped shape the human world. At the speed of a horse, our ancestors conquered distances and built empires. Together, humans and horses flourished side by side. What makes us so perfect for each other?
- 9:30PM This Land Is Your Land** Take a musical journey through the evolution of modern American folk music, from its roots in bluegrass to San Francisco coffee houses to clubs in Greenwich Village. *1.5 hrs.*

- 7:30PM Woody Guthrie at 100! Live at the Kennedy Center** John Mellencamp, Jackson Browne, Ani DiFranco, and more celebrate America's greatest folk musician.
- 9:00PM Luther S1, E9** Luther is called in to investigate a man whose brutal and escalating murders seem to have no motive. As Luther's affection for Jenny grows, so does his determination to protect her.
- 10:00PM Ripper Street S5, E2: A Brittle Thread** After the public humiliation of Frank Thatcher, Shine re-doubles his efforts to capture Reid and Jackson. Suspicion is high that Drummond, through his relationship with Mathilda, is collaborating with Reid. *1 hr.*

- 7:30PM Lucy Worsley Investigates: The American Revolution S1, E2: A Messy Divorce** Lucy investigates how the American Revolution affected Britain, with sabotage, espionage, and political unrest reshaping the empire. Lucy consults experts and evidence to explore this lesser-told and fascinating aspect of the War of Independence.
- 9:00PM Michael Palin in North Korea** Under the watchful eye of two friendly guides and several secret agents provided by the North Korean government, Michael starts his journey by visiting Pyongyang, the capital of North Korea.
- 10:00PM Pioneers of Television Science Fiction** This episode uncovers three key sci-fi series: *Star Trek*, *Lost in Space*, and *Twilight Zone*. It includes interviews with both Leonard Nimoy and William Shatner; the full cast of *Lost in Space*; and a never-before-seen interview with icon Rod Serling. *1 hr.*

- 7:30PM Christina Cooks: Back to the Cutting Board Simply Sweet** Canale, chewy chocolate chip almond cookies, and rosata di mandorle.
- 8:00PM Wired for Connection** Human connection plays a vital role in our health and well-being. From the cradle to our golden years, it shapes how we grow, thrive, and survive. Cutting-edge science reveals how isolation can harm us both mentally and physically.
- 9:00PM Reel South Discount Funeral/No Se Ve Desde Aca** Two films reveal how place shapes nostalgia, resilience, and the pursuit of the American Dream. From a fragmented small-town scrapbook to Miami's layered immigrant landscape, these films explore belonging, memory, and aspiration.
- 10:00PM Loving John** This is the story of ultra-runner John Godinet and his fight against ALS. *1 hr.*

- 7:30PM Christina Cooks: Back to the Cutting Board Muscle Power** Grilled Mediterranean vegetables with puréed beans, kitchen sink chili, and stuffed peppers.
- 8:00PM If I Could Stay/Si Pudiera Quedarme** This film is a moving call to action about love, justice, and the strength of community. Undocumented mothers Jeanette and Ingrid seek church sanctuary to avoid deportation and separation from their children. Filmed over five years, their legal battles and quiet bravery inspire unlikely allies in largely white faith communities.
- 9:00PM Asian Americans Breaking Through** Revisit the turn of the millennium, when Asian Americans are empowered by growing numbers and rising influence but face a reckoning of what it means to be an American in an increasingly polarized society.
- 10:00PM Buskers New York** Celebrate street performers and the stories behind their checkered careers and one-of-a-kind, awe-inspiring talents. *1 hr.*

- 7:30PM Weekends with Yankee Outdoor Adventures** Visit Pond Hill Ranch in Vermont; Sandy Neck Beach on Cape Cod; and Burlington, Vermont.
- 8:00PM Chesapeake Collectibles** A White House butler, pocket watches, a Marlon Brando portrait, a silver menorah, and Civil War ephemera.
- 8:30PM America's Test Kitchen Maple Pork Chops and Squash Soup** Maple pork chops with sweet potato bacon hash; leek, fennel, and squash soup with sausage; a cast iron skillet review; and how to defrost food quickly.
- 9:00PM Masterpiece Downton Abbey: Season 1, Pt 4** The heir crisis at Downton Abbey takes an unexpected turn. Anna unearths Bates' mysterious past.
- 10:30PM Hunting the Stone: Suiseki in the West** Discover the fascinating story of an ancient Asian art form called "stone appreciation." *0.5 hr.*

## 11 | THURSDAY



- 7:00PM J Swanke's Life in Bloom Beauty Blooms** 📺 Flowers beautify spaces large and small in this episode, from a city flower installation to porch pots and garden displays, to personal spaces. *R 6/20 4pm*
- 7:30PM America's Test Kitchen Comforting Japanese Dinners** Tonkatsu (Japanese fried pork chops), kare raisu (Japanese curry rice with chicken), and reviews of Japanese rice. *R 6/27 1:30pm*
- 8:00PM Great Performances Josh Groban: An Evening at Union Chapel** Filmed in November 2025, this unforgettable concert film captures a performance by Josh Groban at London's historic Union Chapel. Groban is at the top of his craft as he unveils new songs and unique interpretations of all-time favorites in an intimate, warm setting. Highlighting Groban's emotional range and connection to his audience, the performance showcases not only his soaring voice but also his personal stories about the songs, his career, and his life.
- 10:00PM Viewer Favorite** Visit [mpt.org/schedule](http://mpt.org/schedule). *2 hrs.*

## 12 | FRIDAY

- 7:00PM State Circle** 📺 Reporting on top Maryland issues.
- 7:30PM Artworks The Art of Curation – Conception** Go behind the scenes with the curators at the Baltimore Museum of Art to discover how they conceived, planned, and designed a new exhibit aimed at an unconventional audience.
- 8:00PM Dalgliesh S2, E3: A Certain Justice, Pt 1** 📺 Dalgliesh, Kate Miskin, and new D.S. Daniel Tarrant investigate the murder of a defense barrister. *R 6/13 4am*
- 9:00PM Concert for George** On November 29, 2002, one year after the passing of music legend George Harrison, a performance tribute was organized in his honor. *R 6/13 7pm MPT2; 2 hrs.*

## 13 | SATURDAY

- 7:00PM Viewer Favorite** Visit [mpt.org/schedule](http://mpt.org/schedule). *5 hrs.*

## 14 | SUNDAY

- 7:00PM Viewer Favorite** Visit [mpt.org/schedule](http://mpt.org/schedule).
- 8:00PM Patience S2, E1: Vampire** 📺 📺 Witness Patience's powerful deduction skills as she helps the York Police solve crimes. Patience's autism and extraordinary ability to make connections that others overlook impress Detective Metcalf. *R 6/15 4am; 6/16 8pm MPT2*
- 9:00PM Masterpiece Grantchester: Season 11, E1** 📺 📺 Alpha's growing connection with the bishop's daughter, Meg, coincides with more discoveries about his past and the life he might have lived. Will he find the answers he's been searching for? *R 6/17 4am; 6/16 9pm MPT2*
- 10:00PM Masterpiece Downton Abbey Season 2: Pt 1** Two years into World War I, Downton Abbey is in turmoil, as Matthew and other young men go to war. *R 6/17 9pm MPT2; 2.5 hrs.*

## 15 | MONDAY

- 7:00PM Direct Connection** 📺 Live, interactive newsmaker interviews.
- 7:30PM Chesapeake Collectibles** 📺 Strange societies, communist propaganda, an Art Deco vase, brothel décor, and a vintage computer. *R 6/21 1:30pm; 6/17 8pm & 6/20 8:30pm MPT2*
- 8:00PM Antiques Roadshow Crystal Bridges Museum of American Art, Hour 1** A 1976 Marvel UK Super Spider-Man #175 cover art, a 1926 Rogers Hornsby sterling trophy, and Winslow Homer watercolors, ca. 1879. *R 6/16 12:30am & 4am*
- 9:00PM Becoming American: Philadelphia's Story** 📺 Explore the founding of the United States through the lens of Philadelphia, America's first capital. *R 6/16 1:30am*
- 10:00PM The Last Twins** 📺 It's the never-before-told story of an unsung hero of the Holocaust, Erno "Zvi" Spiegel, who risked everything to save dozens of young twins from almost certain death at Auschwitz. *R 6/16 2:30am; 1.5 hrs.*

- 7:30PM Weekends with Yankee Weekend Escapes** Visit Mill City Park in Franklin, New Hampshire; Camden Harbour Inn in Maine; and Red House in Vermont.
- 8:00PM This Old House Asheville | Rising Out of the Muck** 📺 Meteorologist Stephanie Abrams explains why the storm dumped so much rain on Asheville. Zack and Kevin help the builders start putting homes back together.
- 8:30PM Ask This Old House Seashell Driveway, Radon System** This coastal house gets upgrades like a seashell driveway and a radon system.
- 9:00PM Seaside Hotel S10, E5: Resistance and Hope** Amanda is pressured by the hotel's suppliers, and Weyse is confronted by the theater.
- 10:00PM American Muslims: A History Revealed A New Hope for Freedom** 📺 This series of six short documentary films reveals and explores the early history of Muslims in America.
- 10:30PM Armadillo Man: The Trips of Jim Franklin** 📺 This is the story of Jim Franklin and how he helped establish the Armadillo World Headquarters. *0.5 hr.*

- 7:30PM Maryland Farm & Harvest** At Deere Valley Farm, Joanne gets behind the wheel of the combine to bring in the last of the winter wheat. An Air Force veteran and his family are raising Texas Longhorns at Downey Family Farm. Al learns how hops are harvested and brewed.
- 8:00PM Big Cats 24/7 S1, E5** The team witnesses a baby boom in the Delta. Lioness Matho must protect her cubs alone, while leopard mum Xudum reveals her newborns with danger looming nearby.
- 9:00PM The Puzzle Lady S1, E6** Cora faces her deadliest case yet.
- 10:00PM Austin City Limits Norah Jones/Hurray for the Riff Raff** Nine-time Grammy-winning Norah Jones dazzles with highlights from her latest LP *Visions*. Hurray for the Riff Raff thrills with standouts from *The Past Is Still Alive*. *1 hr.*

- 7:00PM Concert for George** On November 29, 2002, one year after the passing of music legend George Harrison, a performance tribute was organized in his honor.
- 9:00PM Luther S1, E10** Luther's personal and professional life spirals out of control as he tries to cover up Toby's death and appease a suspicious Baba. He must also protect Jenny from any further harm.
- 10:00PM Ripper Street S5, E3: All The Glittering Blades** Having managed to steal Nathaniel from Reid's grasp, Dove's intention is to now keep him safe until he can be sure of Reid's capture and incarceration...but can Dove rely on Nathaniel to control his primal urges for long enough to allow him to secure their future? *1 hr.*

- 9:00AM Viewer Favorite** Visit [mpt.org/schedule](http://mpt.org/schedule).
- 9:00PM Michael Palin in North Korea** Michael Palin visits the Korean Demilitarized Zone (which he previously visited from the South Korean side), the ancient Korean capital of Kaesong, the ghostly international airport in the newly built beachside resort town of Wonsan, and the Revolutionary Museum on Mount Paektu. He also talks to an army officer, joins a farming family for lunch, celebrates his 75th birthday with his guides and crew, and finally gets his female guide to open up a bit about her views on the world as they go hiking in the rocky Mount Kumgang.
- 10:00PM Pioneers of Television Sitcoms** This episode focuses on five key sitcoms: *I Love Lucy*, *The Honeymooners*, *Make Room for Daddy*, *The Andy Griffith Show*, and *The Dick Van Dyke Show*. Mary Tyler Moore and Dick Van Dyke recount their years on *The Dick Van Dyke Show*. *1 hr.*

- 7:30PM Weekends with Yankee New England's Best Biking** the Cross New Hampshire Adventure Trail, harvesting wild beach plums on Cape Cod, and enjoying the natural beauty of Lubec, Maine.
- 8:00PM Listen to Me** 📺 Discover voices of Black women and birthing people as they navigate pregnancy and birth.
- 9:00PM Reel South Jan Beauboeuf/Police Dive/Teddy** 📺 Three intimate portraits explore purpose, devotion, and service across generations. An aging artist creates against time, a dive detective confronts faith and mortality, and a male doula redefines care for Black mothers.
- 10:00PM Always Looking: Titus Brooks Heagins** 📺 Explore the work of photographer Titus Brooks Heagins and the challenging questions his photos pose about the systemic exclusion and neglect of communities of color. *1 hr.*

16 | TUESDAY



- 7:00PM **Maryland Farm & Harvest The Dirt!** How farmers adapt to different soil types, and a teacher's mission to get young people involved in agriculture. *R 6/18 11pm & 6/21 6am; 6/19 7:30pm MPT2*
- 7:30PM **Outdoors Maryland** Tracking monarch migration; rediscovering the Mason-Dixon line; and encouraging minority engagement with the Bay. *R 6/20 5:30am & 4:30pm*
- 8:00PM **Finding Your Roots Great Migrations** Henry Louis Gates, Jr. helps Wiz Khalifa and Sanaa Lathan trace their ancestors. *R 6/17 12am & 3am*
- 9:00PM **Becoming Katharine Graham** This documentary chronicles the transformation of Katharine Graham from a "doormat wife" into the trailblazing, Pulitzer Prize-winning publisher of *The Washington Post*. *R 6/17 1am; 2 hrs*

17 | WEDNESDAY

- 7:00PM **Christopher Kimball's Milk Street Television The Secrets of Curry** Sri Lankan spinach and coconut dal with tomato tarka; tangy Sri Lankan deviled shrimp; and Sri Lankan chicken and coconut curry.
- 7:30PM **MotorWeek 2026 Drivers' Choice Awards** Each year, the *MotorWeek* staff votes on their favorite picks for the best cars, trucks, and utilities they've driven.
- 8:00PM **Nature Wildheart** Immerse yourself in Scotland's wild highlands with its magnificent 500-year-old Scots pine tree. *R 6/18 12am*
- 9:00PM **NOVA Secrets of the Forest** Learn how experts try to tackle the twin threats of climate change and the threat of extinction. *R 6/18 1am & 4am*
- 10:00PM **The Kimberley: Australia's Wild West River of Life** Explore the importance of Australia's rivers to wallabies, lizards, and more. *R 6/18 2am; 1 hr.*

18 | THURSDAY

- 7:00PM **J Schwanke's Life in Bloom Wellness in Bloom** Research proves that flowers can improve your life in both obvious and unexpected ways. *R 6/27 4pm*
- 7:30PM **America's Test Kitchen Maple Pork Chops and Squash Soup** Maple pork chops with sweet potato-bacon hash; leek, fennel, and squash soup with sausage; and cast iron skillet reviews. *R 7/4 1:30pm*
- 8:00PM **Turn: Washington's Spies S2, E1: Thoughts of a Free Man** Abe is eager to get to Washington, while Rogers finds a new job. *R 6/19 12am & 3am*
- 9:00PM **RFDS: Royal Flying Doctor Service Duty of Care** Based on true stories, follow the daily lives of the modern-day heroes of the RFDS. *R 6/19 1am & 4am*
- 10:00PM **Astrid S4, E7: The Ankou** Raphaëlle and Astrid work to solve a murder where the same man has already died. *R 6/19 2am; 1 hr.*

19 | FRIDAY

- 7:00PM **State Circle** Reporting on top Maryland issues.
- 7:30PM **Artworks The Art of Curation: Execution** Explore the Baltimore Museum of Art's exhibit "The Culture: Hip Hop and Contemporary Art." *R 6/21 6:30am; 6/20 8pm MPT2*
- 8:00PM **Dalgliesh S2, E4: A Certain Justice, Pt 2** Dalgliesh's team could be running out of time to save her daughter from her dangerous fiancé. *R 6/20 12am & 3am*
- 9:00PM **American Experience George H.W. Bush: Pt 1** Examine George H.W. Bush's service in World War II, early career in Texas, and presidency. *R 6/20 1am; 2 hrs.*

20 | SATURDAY

- 7:00PM **Lucky Chow London: Empire on the Plate** See how London's Asian food culture is inseparable from the history of the British Empire. *R 6/28 2:30pm*
- 7:30PM **Indian as Apple Pie Curry Means Gravy** Anupy Singla makes a traditional punjabi chicken curry and discusses an easy homemade achaar, or Indian pickle, and a smooth mango lassi drink. *R 6/30 11pm*
- 8:00PM **Facing the Wind** Follow two women whose husbands are diagnosed with Lewy body dementia. *R 6/21 12am, 3am, & 4pm; 6/22 10pm MPT2*
- 9:00PM **The Changing Face of Elton John** Follow the career of the iconic rock star through the prism of his ever-changing style. *R 6/21 1am*
- 10:00PM **House Music – A Cultural Revolution: American Stories** Celebrate the innovative and catchy electronic dance music that continues to inspire prominent artists today. *R 6/21 2am; 1 hr.*

- 7:30PM **Weekends with Yankee Handmade in New England** Visit White Flower Farm in Connecticut, Cider Hill Farm in Massachusetts, and Red Kite Candy in New Hampshire.
- 8:00PM **Patience S2, E1: Vampire** Witness Patience's powerful deduction skills as she helps the York Police solve crimes.
- 9:00PM **Masterpiece Grantchester: S11, E1** Alphy's growing connection with the bishop's daughter, Meg, coincides with more discoveries about his past and the life he might have lived. Will he find the answers he's been searching for? Geordie enjoys a period of relative calm with Cathy and their family, but a tempting offer from his commanding officer threatens to upend everything.
- 10:00PM **Out in Rural America** Examine the struggles and joys of being lesbian, gay, bisexual, and transgender in rural America. *1 hr.*

- 7:30PM **Weekends with Yankee Little-Known New England** Visit the Chanler at Cliff Walk and the International Tennis Hall of Fame in Newport. Then, in Maine, co-host Amy Traverso stops by the oyster farm and raw bar OystHERS and the treehouse resort Seguin. And in Bethel, Maine, we find a town custom-tailored for outdoor lovers.
- 8:00PM **Chesapeake Collectibles** Strange societies, communist propaganda, an Art Deco vase, brothel décor, and a vintage computer.
- 8:30PM **America's Test Kitchen Seafood Stew and Salmon Burgers** Crab and shrimp stew, salmon burgers with sriracha mayonnaise, and a review of gyuto knives.
- 9:00PM **Masterpiece Downton Abbey: Season 2, Pt 1** Two years into World War I, Downton Abbey is in turmoil, as Matthew and other young men go to war. *2 hrs.*

- 7:30PM **Weekends with Yankee New England's Great Outdoors** Visit Tunbridge, Vermont; Rockland, Maine; and Concord, New Hampshire.
- 8:00PM **This Old House Asheville | All Clear** Mark meets with a local mason to assess the damage to a chimney.
- 8:30PM **Ask This Old House Houseplant Soil, Spot Point Brick** Tom shows us methods for removing ring stains from a wooden table. Jenn breaks down the types of soil and fertilizer needed for common indoor plants.
- 9:00PM **Seaside Hotel S10, E6: Buy, Sell, and Rosita** Amanda has to give up the hotel if she and Frida are to have a future with Uwe in Germany.
- 10:00PM **American Muslims: A History Revealed A South Asian in the Southwest** Six short documentary films reveal and explore the early history of Muslims in America. The series is hosted by three leading American Muslim journalists: Malika Bilal, Aymann Ismail, and Asma Khalid.

- 10:30PM **Swing Lo'** Explore the life and tragic passing of artist Michael Richards. *0.5 hr.*
- 7:30PM **Maryland Farm & Harvest The Dirt!** How farmers adapt to different soil types, and a teacher's mission to get young people involved in agriculture.
- 8:00PM **Big Cats 24/7 S1, E6** As lion numbers rise, competition for food becomes fierce.
- 9:00PM **Go-Go City: Displacement and Protest in Washington, DC** Discover the rich and colorful tapestry of Black culture in Washington, DC.
- 10:00PM **Austin City Limits Kacey Musgraves** Seven-time Grammy-winning singer-songwriter Kacey Musgraves showcases a new collection of songs from *Deeper Well*. *1 hr.*

- 7:30PM **Washington Week with the Atlantic**
- 8:00PM **Artworks The Art of Curation – Execution** Explore the Baltimore Museum of Art's exhibit "The Culture: Hip Hop and Contemporary Art," a celebration of hip hop's influence on music, fashion, technology, and visual and performing arts.
- 8:30PM **Chesapeake Collectibles** Strange societies, communist propaganda, an Art Deco vase, brothel décor, and a vintage computer.
- 9:00PM **Luther S1, E11** A fetish killer is on the hunt, and Luther's worst enemies may be his own colleagues.
- 10:00PM **Ripper Street S5, E4: The Dreaming Dead** Robin Sumner is lost in Whitechapel, his mother and uncle having been killed by Nathaniel Dove. *1 hr.*

21 | SUNDAY



- 7:00PM **Doc Martin** S9, E1: **To the Lighthouse** Mrs. Tishell gets a new lease on life, while Martin's medical career is under scrutiny.
- 8:00PM **Patience** S2, E2: **Music in the Minster** Witness Patience's powerful deduction skills as she helps solve crimes. *R 6/22 12am & 3am; 6/23 8pm MPT2*
- 9:00PM **Masterpiece Grantchester: S11, E2** There's no shortage of murder, mystery, and mayhem in the seemingly quiet 1950s Cambridgeshire village of Grantchester. *R 6/22 1am, 6/22 4am, 6/23 9pm*
- 10:00PM **Masterpiece Downton Abbey: Season 2, Pt 2** Downton becomes a convalescent home with Thomas in charge. Lavinia and Richard's secret comes out. *R 6/22 2am; 6/24 9pm MPT2; 1 hr.*

22 | MONDAY

- 7:00PM **Direct Connection** Live, interactive newsmaker interviews.
- 7:30PM **Chesapeake Collectibles** Manumission docs, a silver punch bowl, the key to Havre de Grace, Art Deco prints, and a Winchester rifle. *R 6/28 1:30pm; 6/24 8pm & 6/27 8:30pm MPT2*
- 8:00PM **Antiques Roadshow Crystal Bridges Museum of American Art, Hour 3** An 1857 Queen's Cup ascot race trophy, a 1956 Curta calculator type II, and an Art Deco sapphire and platinum ring. *R 6/23 12am & 3am*
- 9:00PM **Space Chase USA** Explore the events that transformed Cocoa Beach, Florida, into a center for the U.S. space program. *R 6/23 1am & 4am*
- 10:00PM **Independent Lens Assembly** An exhibit at New York's Park Avenue Armory blends visual art, performance, and artificial intelligence. *R 6/23 2am; 1 hr.*

23 | TUESDAY

- 7:00PM **Maryland Farm & Harvest** Restoring streams helps prevent flooding, healthy soil fights climate change, and buying in season tastes better and is better for the planet. *R 6/25 11pm & 6/28 6am; 6/26 7:30pm MPT2*
- 7:30PM **Outdoors Maryland** Angling for glory at a bass fishing tournament; on the hunt for an endangered bee; and disc golf. *R 6/27 5:30am & 6/27 4:30pm*
- 8:00PM **Finding Your Roots The Ties That Bind** Henry Louis Gates, Jr. maps the roots of married actors Kristen Bell and Dax Shepard. *R 6/24 12am, 6/24 3am*
- 9:00PM **Lucy Worsley Investigates: The American Revolution E1: The Break Up** Lucy investigates the explosive breakup of Britain and America. *R 6/24 1am & 4am*
- 10:00PM **Frontline** 1 hr.

24 | WEDNESDAY

- 7:00PM **Christopher Kimball's Milk Street Television Eggs Around the World** Velvety Turkish scrambled eggs with yogurt; wok-fried eggs and soy sauce eggs; and Cantonese-style shrimp omelet on rice.
- 7:30PM **MotorWeek** The Subaru Uncharted and the Dodge Charger Scat Pack.
- 8:00PM **Nature American Horses** Discover the history of the uniquely American horse breeds that helped shape our nation. *R 6/25 12am & 3am*
- 9:00PM **NOVA Ancient Desert Death Trap** Archaeologists investigate strange Stone Age megastructures in the Arabian desert. *R 6/25 1am & 4am*
- 10:00PM **The Kimberley: Australia's Wild West Tidal Territory** Crocs, mangrove snakes, and wallabies battle for dominance at the river. *R 6/25 2am; 1 hr.*

25 | THURSDAY

- 7:00PM **J Swanke's Life in Bloom Flowers by the Ocean** Discover the global journey flowers make on their way to blooming in your home. *R 7/4 4pm*
- 7:30PM **America's Test Kitchen Seafood Stew and Salmon Burgers** Crab and shrimp stew, salmon burgers with sriracha mayonnaise, and a review of gyuto knives. *R 7/11 1:30pm*
- 8:00PM **Turn: Washington's Spies S2, E2: Hard Boiled** Abe continues his mission in New York. *R 6/26 12am & 3am*
- 9:00PM **RFDS: Royal Flying Doctor Service S3, E8: Accountability** Follow the modern-day heroes of the RFDS as they navigate private lives as profound as the heart-stopping emergencies they attend to. *R 6/26 1am & 4am*
- 10:00PM **Astrid S4, E8: Guilty** Astrid and Nicolas use their talents when Raphaelle is suspected of murder. *R 6/26 2am & 7/3 2am; 1 hr.*

- 7:30PM **MotorWeek** The Subaru Uncharted and the Dodge Charger Scat Pack.
- 8:00PM **Mel Brooks: The Genius Entertainer** Discover the nine-decade career of master of comedy Mel Brooks.
- 9:00PM **Independent Lens Breaking the News** A scrappy group of women and LBGTQ+ journalists go against the status quo to band together.
- 10:30PM **The Committee** This is a documentary about the little-known Florida Legislative Investigative Committee of the State Legislature from 1956-1965, the aim of which was to root out communist and homosexual teachers and students from state universities. It was successful in either firing or expelling more than 200 suspected gay and lesbian citizens. The film features two survivors and one interrogator who have never before spoken publicly about their experiences. *0.5 hr.*

- 7:30PM **Weekends with Yankee Food Lover's New England** Visit New Hampshire's Lakes Region; Stonington, Maine; and Kennebunkport, Maine.
- 8:00PM **Voyage of Adventure: Retracing Donelson's Journey** Photographer John Guider sets out to retrace a historic expedition that took place between 1779-1780. Embarking on a 14.5-foot, self-made row boat, Guider follows surveyor John Donelson's late-17th century, 1,000-mile river journey, which began in the northwest corner of Tennessee and ended at what would later become present-day Nashville.
- 9:00PM **Reel South Boil That Cabbage Down/Red Sands/George V** Discover a Mexican-American off-road race that redefines the border through speed.
- 10:00PM **Facing the Wind** Follow two women whose lives are changed by their husbands' diagnoses with Lewy body dementia. *1 hr.*

- 7:30PM **Weekends with Yankee Indulging in New England** Visit New Bedford and Sudbury in Massachusetts, as well as Littleton and Bethlehem in New Hampshire.
- 8:00PM **Patience S2, E2: Music in the Minster** Witness Patience's powerful deduction skills as she helps the York Police solve crimes.
- 9:00PM **Masterpiece Grantchester: S11, E2** There's no shortage of murder, mystery, and mayhem in the seemingly quiet 1950s Cambridgeshire village of Grantchester.
- 10:00PM **Invisible Nation** This film offers viewers unprecedented, intimate access to Tsai Ing-wen, Taiwan's first female president, providing a character-centered study of her leadership during a period of complex global and geopolitical challenges. *1 hr.*

- 7:30PM **Weekends with Yankee Deep Roots** Visit Boston's Chinatown; Westerly, Rhode Island; and Tiverton, Rhode Island.
- 8:00PM **Chesapeake Collectibles** Manumission docs, a silver punch bowl, the key to Havre de Grace, Art Deco prints, and a Winchester rifle.
- 8:30PM **America's Test Kitchen New England Clambake** A New England clambake, grilled combread with charred jalapenos and cheddar, and grilling tips.
- 9:00PM **Masterpiece Downton Abbey: Season 2, Pt 2** Downton becomes a convalescent home with Thomas in charge. Lavinia and Richard's secret comes out.
- 10:00PM **PTSD9-1-1** This documentary is about real people: normal, average human beings who have chosen to work in professions that require above average heroism, fortitude, and resolve. *1 hr.*

- 7:30PM **Weekends with Yankee To the Top** Visit cookbook author Dorie Greenspan at her Connecticut home; rock climb in Rumney, New Hampshire; and see preservation projects on Martha's Vineyard in Massachusetts.
- 8:00PM **This Old House Asheville | Waterproof Work** Kevin helps Jim's brother, Bill, tile a bathroom, while Will works on a rotted deck.
- 8:30PM **Ask This Old House Washer Dryer Relocation** Discover how art can foster unity amid a world that often feels divided.
- 9:00PM **Seaside Hotel S10, E7: Small Changes** Seerup wants to keep the hotel as it is. Madsen and Weyse receive an offer from Odegaard Andersen.
- 10:00PM **Healing a Soldier's Heart** Follow the courageous journeys of four Vietnam veterans, all suffering from severe PTSD. *1 hr.*

## 26 | FRIDAY



- 7:00PM State Circle** Reporting on top Maryland issues.
- 7:30PM Artworks The Art of Comedy** Learn how comedians write and craft their jokes, test material on new audiences, and adapt to ever-changing social mores. *R 6/28 6:30am; 6/27 8pm MPT2*
- 8:00PM Dalglish S2, E5: The Murder Room, Pt 1** Marcus and Caroline struggle to convince their brother to renew their family's lease for the museum. *R 6/27 12am & 4am*
- 9:00PM American Experience George H.W. Bush: Pt 2** Examine Bush's role as leader of the first Gulf War and his final days as president. *R 6/27 1am*
- 10:30PM The American Revolution: An Inside Look** Step behind the scenes of Ken Burns's new film. *R 6/27 2:30am; 0.5 hr.*

- 7:30PM Maryland Farm & Harvest** Restoring streams helps prevent flooding, healthy soil fights climate change, and buying in season tastes better and is better for the planet.
- 8:00PM Big Cats 24/7 S2, E1: The Rogue Boys** Old friends, new threats – the team returns to Okavango Delta as big cats face new life events.
- 9:00PM Captivated E1** Single mom Rachel is on the poverty line, leaving her working all hours of the day as a cleaner to provide for her son. Out of the blue, she is approached by a wealthy businessman offering her a new job with better pay and shorter hours. However, after accepting, she gets drawn further into his life and begins to question his motives.
- 10:00PM Austin City Limits Juanes** Colombian superstar Juanes performs a career-spanning set in a euphoric hour. *1 hr.*

## 27 | SATURDAY

- 7:00PM Lucky Chow Paris: By Way of Vietnam** Danielle Chang explores how Vietnamese cooking took root in France. *R 7/5 2:30pm*
- 7:30PM Breaking the Blue Wall** Since its passage in 1974, Maryland's Law Enforcement Officers' Bill of Rights (LEOBR) shielded police officers from discipline, even in cases of egregious brutality.
- 8:00PM Rob Reiner: The Director** Celebrate the extraordinary work and remarkable career of Rob Reiner. *R 6/28 12am & 3am*
- 9:00PM The War of 1812** Examine the conflict that shaped the destiny of North America. *R 6/28 1am; 2 hrs.*

- 7:30PM Washington Week with the Atlantic**
- 8:00PM Artworks The Art of Comedy** Learn how comedians write and craft their jokes, test material on new audiences, and adapt to ever-changing social mores.
- 8:30PM Chesapeake Collectibles** Manumission docs, a silver punch bowl, the key to Havre de Grace, Art Deco prints, and a Winchester rifle.
- 9:00PM Luther S1, E12** Luther discovers the fetish killer is reenacting the past. Can he stop him before he kills again?
- 10:00PM Ripper Street S5, E5: A Last Good Act** Now that Edmund Reid is incarcerated in the cells of Leman Street and Jedediah Shine is dead by his own hand, it seems that Augustus Dove has won the battle for Whitechapel for good. *1 hr.*

## 28 | SUNDAY

- 7:00PM Doc Martin S9, E2: The Shock of the New** Martin must pass three refresher courses for the GMC to make their final decision.
- 8:00PM Patience S2, E3: The Magpie** Witness Patience's powerful deduction skills as she helps the York Police solve crimes. *R 6/29 12am & 3am; 6/30 8pm MPT2*
- 9:00PM Masterpiece Grantchester: S11, E3** There's no shortage of murder, mystery, and mayhem in the seemingly quiet 1950s Cambridgeshire village of Grantchester. *R 6/29 1am, 6/29 4am, 6/30 9pm*
- 10:00PM Masterpiece Downton Abbey: Season 2, Pt 3** Isobel and Cora lock horns over control of Downton's medical role. Mrs. Bird starts a soup kitchen. *R 6/29 2am; 7/1 9pm MPT2; 1 hr.*

- 7:30PM MotorWeek** The Jeep Grand Cherokee and the Hyundai Palisade.
- 8:00PM The Unlikely Union: A Storytelling Symphony of America** As the United States celebrates its 250th anniversary in 2026, Professor Greg Jackson shares the dynamic and engaging story of how 13 distinct and disparate colonies set aside differences to break away from the British and form a republic that became the model for western democracy.
- 10:00PM The Bonackers** Through historic footage, photographs, and heartfelt interviews, we are introduced to the descendants of East Hampton's first European settlers, who share their history, traditions, wisdom, and hopes for the future on their boats and bays and in their pick-up trucks, fields, farms, and homes. Resourcefulness comes naturally, and opportunities to evolve are relentlessly pursued. *1 hr.*

## 29 | MONDAY

- 7:00PM Direct Connection** Live, interactive newsmaker interviews.
- 7:30PM Chesapeake Collectibles** An Audubon print, a Civil War diary, 2001 movie memorabilia, Thai masks, and a cigar wrapper collection. *R 7/5 1:30pm; 7/1 8pm & 7/4 8:30pm MPT2*
- 8:00PM Antiques Roadshow 250 Years of Americana** A flag quilt, ca. 1880; a Tiffany Studios turtle back glass shade, ca. 1915; and an 1884 Edison light bulb. *R 6/30 12am & 3am*
- 9:00PM Lafayette: The Lost Hero** Follow the story of the Marquis de Lafayette and his quest to bring democracy to America and France. *R 6/30 1am & 4am*
- 10:00PM Declarations: Black Americans and the Revolutionary War** Follow the stories of Black Americans after the Revolutionary War. *R 6/30 2am; hr*

- 7:30PM Weekends with Yankee Delicacies from New England** Visit Matunuck Oyster Farm and Bar in Rhode Island; Thompson House Eatery in New Hampshire; and Wiggly Bridge Distillery in Maine.
- 8:00PM The Ship That Turned Back** This film recounts the escape of the filmmaker's husband from Poland to Palestine in 1940.
- 8:30PM Troubled Tributary: Maryland's Patuxent River** Examine the issues impacting water quality on the Patuxent River.
- 9:00PM Eliades Ochoa: from Cuba to the World** The life and career of acclaimed guitarist, singer, and Cuban musician Eliades Ochoa is chronicled.
- 10:00PM Roadtrip Nation: Explore Your Interests E1** Three young adults set out across the American West in search of careers that align with their passions.
- 10:30PM Roadtrip Nation: Explore Your Interests E2** Three young adults meet artists, advocates, and changemakers who pursue what they love. *0.5 hr.*

## 30 | TUESDAY

- 7:00PM Maryland Farm & Harvest** Local farms donate to hurricane relief efforts, a soil scientist educates other farmers, and visiting an apple cider operation. *R 7/2 11pm & 7/5 6am; 7/3 7:30pm MPT2*
- 7:30PM Outdoors Maryland** Scientists investigate the new influx of dolphins in the Chesapeake Bay. *R 7/4 5:30am & 4:30pm*
- 8:00PM Finding Your Roots Secret Lives** Henry Louis Gates, Jr. helps comedians Carol Burnett and Niecy Nash solve deep family mysteries. *R 7/1 12am & 3am*
- 9:00PM Lucy Worsley Investigates: The American Revolution E2: A Messy Divorce** Lucy investigates how America's 18th century fight for freedom reshaped Britain. *R 7/1 1am & 4am*
- 10:00PM Frontline** *1 hr.*

- 7:30PM Weekends with Yankee A Breath of Fresh Air** Meet comedian and author John Hodgman and visit the Andres Institute of Art in Brookline, Massachusetts, then scale Cathedral Ledge in New Hampshire's White Mountains.
- 8:00PM Patience S2, E3: The Magpie** Witness Patience's powerful deduction skills as she helps the York Police solve crimes.
- 9:00PM Masterpiece Grantchester: S11, E3** There's no shortage of murder, mystery, and mayhem in the seemingly quiet 1950s Cambridgeshire village of Grantchester.
- 10:00PM Lifeblood: Chesapeake River Stories** Discover how rivers connect, sustain, and inspire through tales of whitewater kayaking the Potomac, gold prospecting on the Susquehanna, and creating fine art from Patuxent driftwood. *1 hr.*



	Monday	Tuesday	Wednesday	Thursday	Friday	Saturday	Sunday	
6:00	Arthur <sup>3</sup>					Fons & Porter	MD Farm & Harvest	
6:30	Odd Squad					Joy of Painting	Artworks	
7:00	Wild Kratts					Facing Waves	Family Plot	
7:30	Weather Hunters					NHK Newsline	Recipe for Wellness	
8:00	Lyla in the Loop					Papa Ray's Vintage Vinyl Roadshow	Classical Stretch	
8:30	Carl the Collector <sup>1</sup>					Painting & Travel	Museum Access	
9:00	Daniel Tiger's Neighborhood <sup>1</sup>					Changing Seas	Wai Lana Yoga	
9:30	Phoebe & Jay <sup>1</sup>					Books by the River	Upstate Attractions	
10:00	Sesame Street <sup>1</sup>					American Woodshop	Medical Stories	
10:30	Work It Out Wombats! <sup>1</sup>					School of Greatness	Firing Line	
11:00	Donkey Hodie <sup>1</sup>					GardenSMART	Compass Points from PBS News	
11:30	Rosie's Rules					America's Heartland	Washington Week	
noon	Elinor Wonders Why					Fit 2 Stitch	MotorWeek	
12:30	Alma's Way					Cook's Country	Travels with Darley	
1:00	Rick Steves' Europe					To Dine For	Rick Steves	
1:30	6/8–6/11: Outside: Beyond the Lens; 6/12–6/30: Fly Brother					America's Test Kitchen	Chesapeake Collectibles	
2:00	6/8–6/23: Good Karma Hospital; 6/24–6/30: Van der Valk					Milk Street Television	Lidia's Kitchen	
2:30						Savers of Flavor	Lucky Chow	
3:00	6/8–6/19: Turn: Washington's Spies; 6/22–6/23: Lucy Worsley's Royal Myths & Secrets; 6/24–6/26: Van der Valk; 6/29: Around the World in 80 Days					Wild Foods	<b>Documentaries &amp; Entertainment</b> Visit <a href="http://mpt.org/schedule">mpt.org/schedule</a> for complete and current listings.	
3:30						Weekends with Yankee		
4:00	America's Test Kitchen	Indian as Apple Pie	This Old House	America's Heartland	Papa Ray's Vinyl Roadshow	J Schwanke's Life in Bloom		
4:30	Amanpour & Company					Outdoors Maryland		
5:00	BBC News America					MotorWeek <sup>4</sup>		
5:30	PBS NewsHour					Horizons from PBS News		
6:00	PBS NewsHour					History with David Rubenstein		
6:30	PBS NewsHour					Travels with Darley <sup>5</sup>		
7:00–11:00 See Prime Time on pages 6–11								
11:00	Amanpour & Company <sup>2</sup>			MD Farm & Harvest	Washington Week	Austin City Limits <sup>6</sup>		Documentaries & Entertainment
11:30	Amanpour & Company <sup>2</sup>			Direct Connection	Compass Points			

**KEY:** 1. 6/8: Sesame Street; 6/9: Wowsabout 8:30–9:00  
 2. 6/4: 60s and 70s Soul 9:30–12:30; 6/8: Concert for George 10–12; 6/15: The Last Twins 10–11:30; 6/9: Simon & Garfunkel 10:30–12  
 3. 6/5: Wowsabout  
 4. 6/6: Lifeblood: Chesapeake River Stories  
 5. 6/6: Best of 50s Pop  
 6. 6/6: Joe Bonamassa

SUPPORT MPT



Strengthen public television in the Maryland region

You can ensure another year filled with excitement, joy, and fresh perspectives. Make your special gift by June 30.

[mpt.org/donate](http://mpt.org/donate) or call 1-800-222-1292



	Monday	Tuesday	Wednesday	Thursday	Friday	Saturday	Sunday
6:00	Craft in America	P. Allen Smith	Make Your Mark	Start Up	Urban Conversion	Classical Stretch	Classical Stretch
6:30		J Schwanke	Healing Yoga	Yoga in Practice	Family Plot	Healing Yoga	Happy Yoga
7:00	Classical Stretch					Taste of History	Dive in Tokyo
7:30	Sit and Be Fit					Painting with Wilson Bickford	Pocket Sketching
8:00	This Old House	Garage with Steve Butler	Volunteer Woodworker	American Woodshop	This Old House	Ask This Old House	Classical Stretch
8:30	Ask This Old House	J Schwanke	Healing Yoga	Yoga in Practice	Ask This Old House	This Old House	
9:00	Dining with the Chef	Pati's Mexican Table	Cook's Country	The Farmer and the Foodie	Healthful Indian Flavors	GardenSMART	Jazzy Vegetarian
9:30	Homemade Live!	Joanne Weir	America's Test Kitchen	Milk Street Television	America's Test Kitchen	GardenSMART	Christina Cooks
10:00	Fly Brother	Travels with Darley	Passion Italy	Wild Rivers with Tillie	Cycle Around Japan	<b>Weekly Marathon</b> Visit <a href="http://mpt.org/schedule">mpt.org/schedule</a> for complete and current listings.	Trails to Oishi Tokyo
10:30	Ireland with Michael	Joseph Rosendo	Samantha Brown	Joseph Rosendo	Samantha Brown		Journeys in Japan
11:00	Rick Steves' Europe						J Schwanke's Life in Bloom
11:30	Joy of Painting						Family Plot
noon	French Chef Classics	Pati's Mexican Table	Cook's Country	The Farmer and the Foodie	Healthful Indian Flavors		<b>Weekly Marathon</b> Visit <a href="http://mpt.org/schedule">mpt.org/schedule</a> for complete and current listings.
12:30	People of the North	Joanne Weir	America's Test Kitchen	Milk Street Television	America's Test Kitchen		
1:00	Afro-Latino Travels	Dream of Italy	Bare Feet	Have Guitar Will Travel World	The Daytripper		
1:30	Fons & Porter	Fit 2 Stitch	Joy of Painting	Quilting Arts	Sewing with Nancy		
2:00	This Old House	Garage with Steve Butler	Volunteer Woodworker	American Woodshop	This Old House		
2:30	Ask This Old House	J Schwanke	Healing Yoga	Yoga in Practice	Ask This Old House		
3:00	Afro-Latino Travels	Dream of Italy	Bare Feet	Have Guitar Will Travel World	The Daytripper		
3:30	America's Test Kitchen	Cook's Country	America's Test Kitchen	Cook's Country	America's Test Kitchen		
4:00	French Chef Classics	Pati's Mexican Table	Cook's Country	The Farmer and the Foodie	Healthful Indian Flavors		
4:30	Homemade Live!	Joanne Weir	America's Test Kitchen	Milk Street Television	America's Test Kitchen		
5:00	Fly Brother	Travels with Darley	Passion Italy	Wild Rivers with Tillie	Cycle Around Japan	Rick Steves	
5:30	Ireland with Michael	Joseph Rosendo	Samantha Brown	Joseph Rosendo	Samantha Brown		
6:00	Rick Steves' Europe					Christopher Kimball's Milk Street Television	My Greek Table
6:30	Kitchen Queens: New Orleans						How She Rolls
7:00	My Greek Table	Key Ingredient	Lidia's Kitchen	Kevin Belton	My Family Recipe		To Dine For
7:30–11:00 See Prime Time on pages 6–11							
11:00	Travels with Darley	Samantha Brown	Tim Farmer's Country Kitchen	Story in the Public Square	Wild Foods	Epic Trails	Cycle Around Japan
11:30	Joy of Painting				Cooking & Travel	Pati's Mexican Table	Joanne Weir



If you've got travel on the brain, look no further – we're setting out on the open road and taking to the skies in search of new horizons! Get inspired by watching *Samantha Brown's Places to Love*, which explores the emotional heart of travel and the people who change and strengthen a destination. Next, tune in to *Have Guitar Will Travel World*, as singer-songwriter Mark Allen discovers how an area's music and traditions express interconnected histories and cultures. And don't miss *Dream of Italy*, as travel expert Kathy McCabe delves into Italy's cuisine, art, history, and culture.



	Monday to Friday	Saturday and Sunday
6:00	Clifford the Big Red Dog	The Cat in the Hat Knows A Lot About That!
6:30	Sesame Street	Dinosaur Train
7:00	Pinkalicious & Peterrific	Pinkalicious & Peterrific
7:30	Curious George	Peg + Cat
8:00	Sesame Street	Sesame Street
8:30	Phoebe & Jay	Phoebe & Jay
9:00	Work It Out Wombats!	Work It Out Wombats!
9:30	Work It Out Wombats!	Work It Out Wombats!
10:00	Daniel Tiger's Neighborhood	Daniel Tiger's Neighborhood
10:30	Daniel Tiger's Neighborhood	Daniel Tiger's Neighborhood
11:00	Carl the Collector	Carl the Collector
11:30	Carl the Collector	Curious George
noon	Donkey Hodie	Donkey Hodie
12:30	Donkey Hodie	Milo
1:00	Elinor Wonders Why	Elinor Wonders Why
1:30	Rosie's Rules	Rosie's Rules
2:00	Phoebe & Jay	Super Why!
2:30	Xavier Riddle & the Secret Museum	Xavier Riddle & the Secret Museum
3:00	Molly of Denali	Molly of Denali
3:30	Alma's Way	Alma's Way
4:00	Lyla in the Loop	Lyla in the Loop
4:30	Weather Hunters	Arthur
5:00	Odd Squad	Odd Squad
5:30	Wild Kratts	Wild Kratts
6:00	Wild Kratts	Wild Kratts
6:30	Weather Hunters	Weather Hunters
7:00	Lyla in the Loop	Weather Hunters
7:30	Arthur	Weather Hunters
8:00	Nature Cat	Weather Hunters
8:30	Hero Elementary	Weather Hunters
9:00	Cyberchase	Weather Hunters
9:30	Let's Go Luna!	Ready Jet Go!
10:00	Phoebe & Jay	Super Why!
10:30	Xavier Riddle & the Secret Museum	Xavier Riddle & the Secret Museum
11:00	Molly of Denali	Molly of Denali
11:30	Alma's Way	Alma's Way
midnight	Lyla in the Loop	Lyla in the Loop
12:30	Weather Hunters	Check your local listings.
1:00	Odd Squad	
1:30	Wild Kratts	
2:00	Wild Kratts	
2:30	Weather Hunters	
3:00	Lyla in the Loop	
3:30	Arthur	
4:00	Nature Cat	
4:30	Hero Elementary	
5:00	Cyberchase	
5:30	Let's Go Luna!	



## DANIEL TIGER'S NEIGHBORHOOD

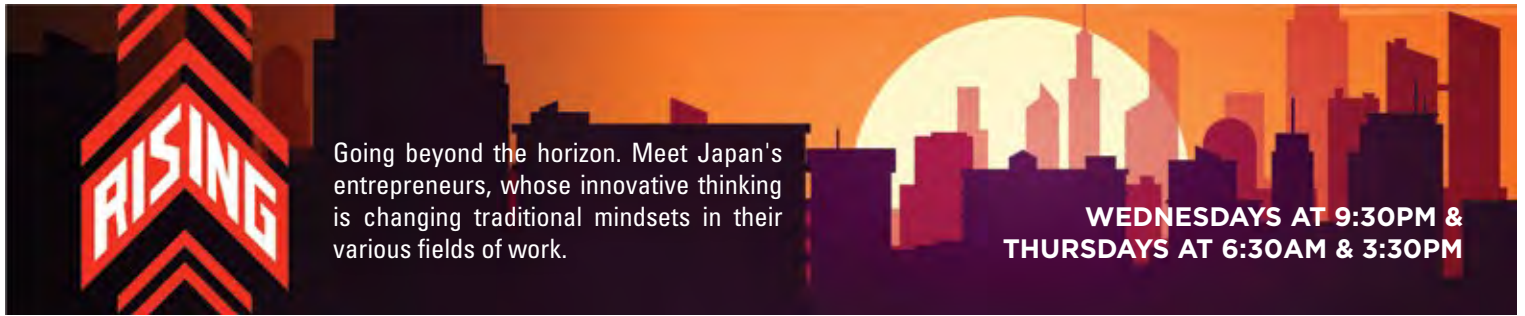
*Daniel Tiger's Neighborhood* Season 8 premieres with an episode reminding kids that grown-ups come back. The series stars four-year-old Daniel Tiger, his family, and friends as they learn key skills for navigating school and life. Catchy songs about learning social and emotional skills will have the whole family singing! This show for preschoolers ages two to four is inspired by the iconic *Mister Rogers' Neighborhood*.

## BUILD HEALTHY Media Habits

Media has helped shape the minds and hearts of every generation, and today's youngest learners are no exception. That's why it's important to begin the conversation around media literacy from the start. Media STEPs help you support your family and take charge of media's influence and impact on children's learning and development. The framework is designed to help you confidently incorporate media into early learning opportunities in just four guiding STEPs: S-Select, T-Talk, E-Explore, and P-Play.

Learn more at [Thinkport.org](http://Thinkport.org)

Programs may vary based on the PBS schedule. Visit [mpt.org/schedule](http://mpt.org/schedule) for complete and current listings.



Going beyond the horizon. Meet Japan's entrepreneurs, whose innovative thinking is changing traditional mindsets in their various fields of work.

WEDNESDAYS AT 9:30PM & THURSDAYS AT 6:30AM & 3:30PM

	Monday	Tuesday	Wednesday	Thursday	Friday	Saturday	Sunday
6:00	NHK NEWSLINE NEWSLINE BIZ	NHK NEWSLINE NEWSLINE BIZ	NHK NEWSLINE NEWSLINE BIZ	NHK NEWSLINE NEWSLINE BIZ	NHK NEWSLINE NEWSLINE BIZ	NHK NEWSLINE	NHK NEWSLINE
6:30	Inside Lens	Document 72 Hours	Side by Side <small>Her Story   Four Seasons in Japan</small>	RISING	Asia Insight	NHK WORLD SHOWCASE	NHK WORLD SHOWCASE
7:00	Newsroom Tokyo	Newsroom Tokyo	Newsroom Tokyo	Newsroom Tokyo	Newsroom Tokyo	NHK NEWSLINE Cool Japan	NHK NEWSLINE 15 Minutes   Japan-easy   Little Charo   Doki Doki! NHK WORLD-JAPAN   no art, no life
7:30	Direct Talk   JAPAN FROM ABOVE	Direct Talk   JAPAN FROM ABOVE	Direct Talk   JAPAN FROM ABOVE	Direct Talk   JAPAN FROM ABOVE	Direct Talk   JAPAN FROM ABOVE	Easy Japanese	NHK NEWSLINE
8:00	NHK NEWSLINE NEWSLINE BIZ	NHK NEWSLINE NEWSLINE BIZ	NHK NEWSLINE NEWSLINE BIZ	NHK NEWSLINE NEWSLINE BIZ	NHK NEWSLINE NEWSLINE BIZ	NHK NEWSLINE	NHK NEWSLINE
8:30	Seasoning the Seasons	Journeys in Japan	TOKYO EYE 2020	Core Kyoto	JIB program	CYCLE AROUND JAPAN Train Cruise Short Programs	Hometown Stories Kids Meet the World Wild Hokkaido!
9:00	NHK NEWSLINE NEWSLINE BIZ	NHK NEWSLINE NEWSLINE BIZ	NHK NEWSLINE NEWSLINE BIZ	NHK NEWSLINE NEWSLINE BIZ	NHK NEWSLINE NEWSLINE BIZ	NHK NEWSLINE	NHK NEWSLINE
9:30	BENTO EXPO Easy Japanese for Work	imagine-nation J-FLICKS Anime Supernova	15 Minutes	DESIGN TALKS plus	Kawaii International	GLOBAL AGENDA NHK WORLD PRIME	The Professionals Face to Face   Short Programs
10:00	NHK NEWSLINE NEWSLINE IN DEPTH	NHK NEWSLINE NEWSLINE IN DEPTH	NHK NEWSLINE NEWSLINE IN DEPTH	NHK NEWSLINE NEWSLINE IN DEPTH	NHK NEWSLINE NEWSLINE IN DEPTH	NHK NEWSLINE	NHK NEWSLINE
10:30	J-Trip Plan	Japanology Plus	Trails to Oishii Tokyo	Journeys in Japan CYCLE AROUND JAPAN Highlights	Dining with the Chef	BIZ STREAM great gear selection #TOKYO	Somewhere Street
11:00	NHK NEWSLINE NEWSLINE IN DEPTH	NHK NEWSLINE NEWSLINE IN DEPTH	NHK NEWSLINE NEWSLINE IN DEPTH	NHK NEWSLINE NEWSLINE IN DEPTH	NHK NEWSLINE NEWSLINE IN DEPTH	NHK NEWSLINE	NHK NEWSLINE
11:30	Medical Frontiers	Science View	great gear Japan's Top Inventions	Japan Railway Journal	Today's Close-Up	NHK Documentary	J-MELO SONGS OF TOKYO Japan-easy
noon	NHK NEWSLINE Direct Talk	NHK NEWSLINE Direct Talk	NHK NEWSLINE Direct Talk	NHK NEWSLINE Direct Talk	NHK NEWSLINE Direct Talk	NHK NEWSLINE	NHK NEWSLINE
12:30	The Mark of Beauty	At Home with Venetia in Kyoto	KABUKI KOOL	Lunch ON! Your Japanese Kitchen Mini	J-Arena	COOL JAPAN	Have a Nice Stay!   Inspiring Landscapes   The Great Summits   Short Programs
1:00	NHK NEWSLINE NEWSLINE IN DEPTH	NHK NEWSLINE NEWSLINE IN DEPTH	NHK NEWSLINE NEWSLINE IN DEPTH	NHK NEWSLINE NEWSLINE IN DEPTH	NHK NEWSLINE NEWSLINE IN DEPTH	NHK NEWSLINE	NHK NEWSLINE
1:30	Seasoning the Seasons	Journeys in Japan	TOKYO EYE 2020	Core Kyoto	JIB PROGRAM	NHK WORLD SHOWCASE	NHK WORLD SHOWCASE
2:00	Newsroom Tokyo	Newsroom Tokyo	Newsroom Tokyo	Newsroom Tokyo	Newsroom Tokyo	NHK NEWSLINE	NHK NEWSLINE
2:30	Direct Talk   Fudoki	Direct Talk   Fudoki	Direct Talk   Fudoki	Direct Talk   Fudoki	Direct Talk   Fudoki	CYCLE AROUND JAPAN Train Cruise Short Programs	Hometown Stories Kids Meet the World Wild Hokkaido!
3:00	NHK NEWSLINE NEWSLINE IN DEPTH	NHK NEWSLINE NEWSLINE IN DEPTH	NHK NEWSLINE NEWSLINE IN DEPTH	NHK NEWSLINE NEWSLINE IN DEPTH	NHK NEWSLINE NEWSLINE IN DEPTH	NHK NEWSLINE	NHK NEWSLINE
3:30	Inside Lens	Document 72 Hours	Side by Side <small>Her Story   Four Seasons in Japan</small>	RISING	Asia Insight	GLOBAL AGENDA NHK WORLD PRIME	The Professionals Face to Face   Short Programs
4:00	NHK NEWSLINE Direct Talk	NHK NEWSLINE Direct Talk	NHK NEWSLINE Direct Talk	NHK NEWSLINE Direct Talk	NHK NEWSLINE Direct Talk	NHK NEWSLINE	NHK NEWSLINE
4:30	J-Trip Plan	Japanology Plus	Trails to Oishii Tokyo	Journeys in Japan CYCLE AROUND JAPAN Highlights	Dining with the Chef	BIZ STREAM great gear selection #TOKYO	Have a Nice Stay!   Inspiring Landscapes   The Great Summits   Short Programs
5:00	NHK NEWSLINE NEWSLINE IN DEPTH	NHK NEWSLINE NEWSLINE IN DEPTH	NHK NEWSLINE NEWSLINE IN DEPTH	NHK NEWSLINE NEWSLINE IN DEPTH	NHK NEWSLINE NEWSLINE IN DEPTH	NHK NEWSLINE	NHK NEWSLINE
5:30	Medical Frontiers	Science View	great gear Japan's Top Inventions	Japan Railway Journal	Today's Close-Up	NHK Documentary	J-MELO SONGS OF TOKYO Japan-easy
6:00	NHK NEWSLINE NEWSLINE IN DEPTH	NHK NEWSLINE NEWSLINE IN DEPTH	NHK NEWSLINE NEWSLINE IN DEPTH	NHK NEWSLINE NEWSLINE IN DEPTH	NHK NEWSLINE NEWSLINE IN DEPTH	NHK NEWSLINE	NHK NEWSLINE
6:30	The Mark of Beauty	At Home with Venetia in Kyoto	KABUKI KOOL	Lunch ON! Your Japanese Kitchen Mini	J-Arena	COOL JAPAN	Somewhere Street
7:00	NHK NEWSLINE Direct Talk	NHK NEWSLINE Direct Talk	NHK NEWSLINE Direct Talk	NHK NEWSLINE Direct Talk	NHK NEWSLINE Direct Talk	NHK NEWSLINE	NHK NEWSLINE
7:30	Journeys in Japan	TOKYO EYE 2020	Core Kyoto	JIB program	NHK WORLD SHOWCASE	NHK WORLD SHOWCASE	Direct Talk   JAPAN FROM ABOVE Seasoning the Seasons
8:00	NHK NEWSLINE NEWSLINE IN DEPTH	NHK NEWSLINE NEWSLINE IN DEPTH	NHK NEWSLINE NEWSLINE IN DEPTH	NHK NEWSLINE NEWSLINE IN DEPTH	NHK NEWSLINE NEWSLINE IN DEPTH	NHK NEWSLINE	NHK NEWSLINE
8:30	imagine-nation	15 Minutes	DESIGN TALKS plus	Kawaii International	CYCLE AROUND JAPAN Train Cruise WHAT'S YOUR CONNECTION   Darwin's Amazing Animals	Hometown Stories Kids Meet the World Wild Hokkaido!	NEWSLINE IN DEPTH BENTO EXPO Easy Japanese for Work
9:00	NHK NEWSLINE NEWSLINE IN DEPTH	NHK NEWSLINE NEWSLINE IN DEPTH	NHK NEWSLINE NEWSLINE IN DEPTH	NHK NEWSLINE NEWSLINE IN DEPTH	NHK NEWSLINE NEWSLINE IN DEPTH	NHK NEWSLINE	NHK NEWSLINE
9:30	Document 72 Hours	Side by Side <small>Her Story   Four Seasons in Japan</small>	RISING	Asia Insight	GLOBAL AGENDA NHK WORLD PRIME	The Professionals Face to Face   Short Programs	Inside Lens
10:00	NHK NEWSLINE NEWSLINE IN DEPTH	NHK NEWSLINE NEWSLINE IN DEPTH	NHK NEWSLINE NEWSLINE IN DEPTH	NHK NEWSLINE NEWSLINE IN DEPTH	NHK NEWSLINE NEWSLINE IN DEPTH	NHK NEWSLINE	NHK NEWSLINE
10:30	J-Trip Plan	Japanology Plus	Trails to Oishii Tokyo	Journeys in Japan CYCLE AROUND JAPAN Highlights	Dining with the Chef The Great Summits   Little Charo	BIZ STREAM great gear selection	Have a Nice Stay! Short Programs
11:00	NHK NEWSLINE NEWSLINE IN DEPTH	NHK NEWSLINE NEWSLINE IN DEPTH	NHK NEWSLINE NEWSLINE IN DEPTH	NHK NEWSLINE NEWSLINE IN DEPTH	NHK NEWSLINE NEWSLINE IN DEPTH	NHK NEWSLINE	NHK NEWSLINE
11:30	Medical Frontiers	Science View	great gear Japan's Top Inventions	Japan Railway Journal	Today's Close-up #TOKYO	NHK Documentary	J-MELO SONGS OF TOKYO

Check mpt.org/schedule for the most up-to-date programming information.

KEY:   = News, Debate, Interview, Current Affairs   = Travels, Culture & Lifestyle, Food   = Documentary, Entertainment, Sports   = Biz & Tech, Science & Nature   = Art & Design, Pop Culture & Fashion



**THE KEEGAN THEATRE**  
in good company



**"COMIC GOLD!"**  
— Variety

# THE PLAY THAT GOES WRONG

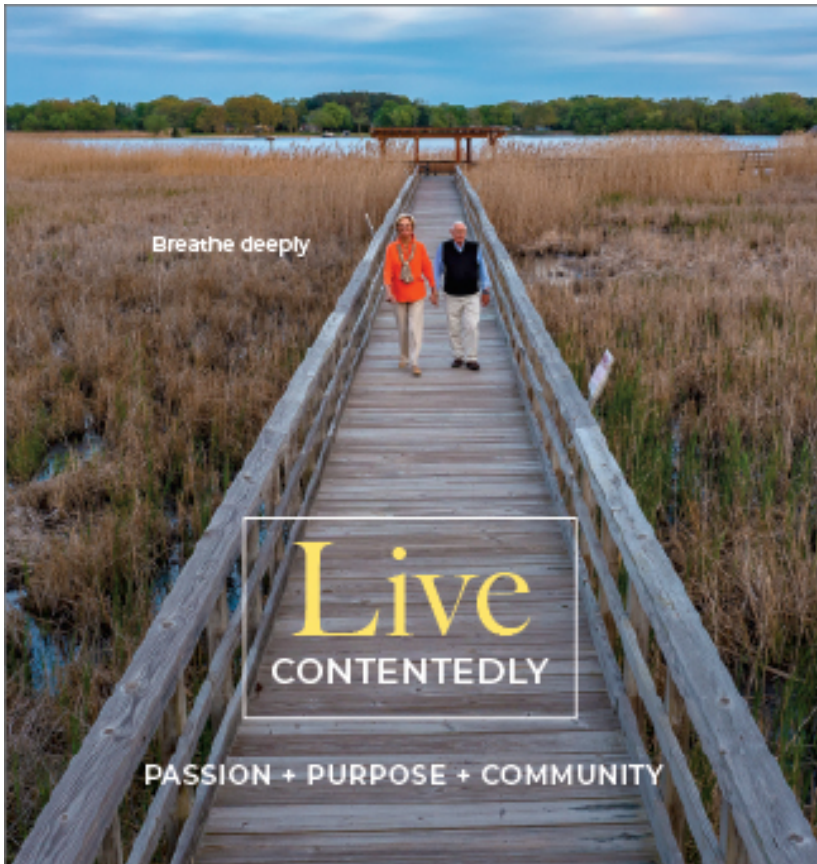
BY HENRY LEWIS, JONATHAN SAYER & HENRY SHIELDS



**JUNE 6-JULY 12**

[WWW.KEEGANTHEATRE.COM](http://WWW.KEEGANTHEATRE.COM)

NEAR DUPONT CIRCLE, WASHINGTON DC



Live the life you love.

Find out how at  
[AboutActs.com/MDPublicTV](http://AboutActs.com/MDPublicTV)  
or call (888) 521-0556.



*Where Loving-Kindness Lives*

Baylegh Chase | Buckingham's Choice  
Fairhaven | Heron Point of Chestertown



**Travel with MPT!**

**Nemours Estate & Longwood Gardens**

September 3, 2026

Visit [mpt.org/travel](http://mpt.org/travel) for details.

WAMU 88.5  
AMERICAN UNIVERSITY RADIO

# YOUNG at HEART

WITH KOJO NNAMDI



**Air traffic controllers ushering at Madison Square Garden...**

**A phone company repairman creating designer shoes...**

**A Shakespeare scholar playing the banjo...**

Through personal stories and conversations, this six-part podcast examines how people rethink purpose, community, and creativity in the years that follow full-time work.

**“Retirement shouldn’t mean just sitting on the couch. It’s an opportunity to try new things, explore passions and hobbies, and engage.”**

—Host Kojo Nnamdi

A limited-run podcast exploring the new life stories that begin when careers end.



Scan to listen now or stream at [wamu.org](http://wamu.org), [NPR.org](http://NPR.org), Apple Podcasts, and Spotify

With support from Zuckerman Spaeder



“...an exploration of how faith intersects with Black womanhood through a mix of music, movement, ritual & poetry.”

— Maya Phillips, *The New York Times*

# (pray)

**JUN 13 - JUL 5**

a sacred offering created by **nicHi douglas** with music by **STARR Busby** & **JJJJJ Jerome Ellis** directed & choreographed by **nicHi douglas**

**BALTIMORE  
CENTER  
STAGE**



**CENTERSTAGE.ORG**

With this ad, \$1.00 off General Admission



# GEM MINER'S SPRING SHOW!!

June 12 - 14, 2026

W. FRIENDSHIP, MD

**Beads! Findings! Minerals! Fossils! Gems & Jewelry!**

## THE MID-ATLANTIC'S BEST SHOW

OPEN TO THE PUBLIC

RETAIL & WHOLESALE VENDORS

WHOLESALE ONLY TRADE AREA

HOURLY DOOR PRIZES & GRAND PRIZE DRAWING

FRI. NOON-6PM ♦ SAT. 10AM-5PM ♦ SUN. 11AM-4PM

\$6 ADMISSION - CHILDREN UNDER 12 FREE

Howard County Fairgrounds

2210 Fairgrounds Road

West Friendship, MD 21794

[www.gem-show.com](http://www.gem-show.com)

[www.gem-show.com](http://www.gem-show.com)

Tamie Simpson

(810) 919-4386



Managed by  
Life Care Services®



*We take care of it all,  
so you don't  
have to...*

410-938-8382

[www.BlakehurstLCS.com](http://www.BlakehurstLCS.com)

1055 West Joppa Road, Towson, MD 21204



# Download the PBS App

Watch the best of PBS anytime, anywhere on the free PBS App. Stream your favorite PBS and MPT shows on-demand, all from your favorite device.



Download the **FREE** PBS App on your smart TV, phone and tablet

[mpt.org/anywhere/pbs-app/](http://mpt.org/anywhere/pbs-app/)



## Do you want **FREE** communication equipment?

The Maryland Accessible Telecommunications (MAT) program gives Maryland residents the opportunity to apply for State-provided telecommunications equipment to independently make and receive calls. The MAT program has a variety of **FREE** equipment solutions to support clearer communication, including:

- ✓ **Amplified Phones**
- ✓ **High-Contrast Phones**
- ✓ **Tablets**
- ✓ **Captioned Telephones**

**And More!**

*\*The MAT program benefits Maryland residents who qualify, ages three and older, who are Deaf, hard of hearing, DeafBlind, or are living with limited speech, mobility, or cognitive abilities.*



Apply For Your **FREE** Phone!

Visit **MAT-Apply.org**  
or call **800-552-7724**  
**410-767-6960 (Voice/TTY)**



11767 Owings Mills Blvd.  
Owings Mills, MD 21117



### Baltimore Speakers Series

### ORDER NOW!

Starting at \$520 for all 7 events

Sold by subscription only  
Seating is limited

**BaltimoreSpeakers.org**  
or call the Box Office at  
(410) 783-8000



scan to order

STEVENSON UNIVERSITY PRESENTS

## Baltimore Speakers Series®

Celebrating 20 years of speakers who will challenge your mind, enlarge your world, and make you laugh

### 2026–2027 Season at Meyerhoff Symphony Hall



**PETE BUTTIGIEG**  
Former US  
Transportation Secretary  
October 1, 2026



**CHARLES F. BOLDEN JR.**  
12th NASA  
Administrator  
February 18, 2027



**BORIS JOHNSON**  
Former UK  
Prime Minister  
October 29, 2026



**NICHOLAS BURNS**  
Former US Ambassador  
to China and NATO  
March 25, 2027



**DORIS KEARNS GOODWIN**  
Pulitzer-Winning  
Historian  
November 12, 2026



**LYNSEY ADDARIO**  
Award-Winning  
War Photographer  
April 8, 2027



**ANDREW ROSS SORKIN**  
Financial Journalist  
and Bestselling Author  
January 14, 2027

SPONSORED BY



BALTIMORE SUN  
MEDIA

# TICKETS ON SALE NOW!