

**Trivia Tuesday**

**Animals**

**Aren't**

**Trivial!**



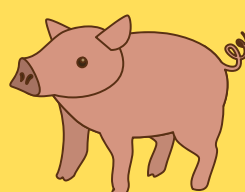
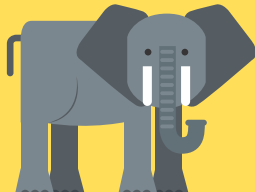
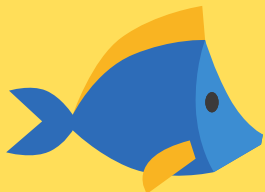
**Do consider yourself an animal expert?  
Test your knowledge of fauna on this  
wild (and domestic) trivia challenge!**



# ANIMALS AREN'T TRIVIAL!



- 1) What word is used to describe a group of wolves?
- 2) How many legs does an ant have?
- 3) What are Mustangs and Appaloosa types of?
- 4) What is the heaviest land animal?
- 5) Which African mammal causes the death of the most people each year?
- 6) What animal travels in groups called murders?
- 7) On what continent do tigers live in the wild?
- 8) What type of animal does the American Kennel Club celebrate?
- 9) Why is the echidna unusual for a mammal?

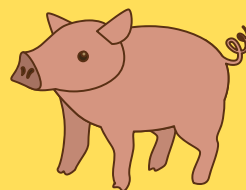
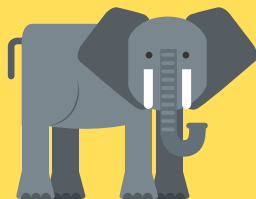
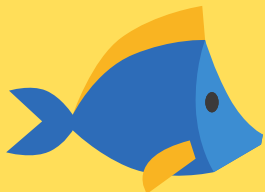




# ANIMALS AREN'T TRIVIAL!



- 10) What scary nickname does the Orca have?
- 11) What can cats do with their claws that dogs can't?
- 12) What venomous snake has a noisy tail to dissuade would-be threats?
- 13) What order of animals includes rats, rabbits, and racoons?
- 14) What is the body of a skink covered in?
- 15) How often do turtles leave their shells?
- 16) What creature does a caterpillar turn into?
- 17) What class of animals do sharks belong to?





# ANIMALS AREN'T TRIVIAL!



18) What animal almost always appears first in a dictionary?

19) How many bones are in a giraffe's neck?

20) What can't Basenjis do that other dogs can?

21) What do bats use to "see" so well in the dark?

22) What is it called when animals move long distances seasonally?

23) What horned animal has a black and a white variety?

24) What lizard, the world's largest, can only be found in Indonesia?

25) What bird is the fastest runner?

# ANIMALS AREN'T TRIVIAL

## Answers

- 1) Pack
- 2) Six
- 3) Horses
- 4) Elephant
- 5) Hippopotamus
- 6) Crows
- 7) Asia
- 8) Dogs
- 9) It lays eggs
- 10) Killer Whale
- 11) Retract them
- 12) Rattlesnake
- 13) Rodent



- 14) Scales
- 15) Never
- 16) Butterfly
- 17) Fish
- 18) Aardvark
- 19) Seven
- 20) Bark
- 21) Echolocation
- 22) Migration
- 23) Rhinoceroses
- 24) Komodo Dragon
- 25) Ostrich

