



Understanding the MAP Assessment

The Winnetka Public Schools community empowers every student to flourish in an innovative, experiential environment. We support and challenge all learners to actively engage in continual growth and achievement to make a meaningful difference in the world.

Background on NWEA MAP

- ❑ Northwest Evaluation Association
- ❑ Nonprofit Organization Founded by Researchers and Educators
- ❑ Mission Driven: Focused on the Student
- ❑ Over 7,400 Partner Schools and Organizations
- ❑ Over 10 Million Students Tested annually

Year 1 MAP in Winnetka District 36

- ❑ MAP offered in two testing windows per year:

Fall and Late Winter (Sept-March; 24 weeks of instruction)

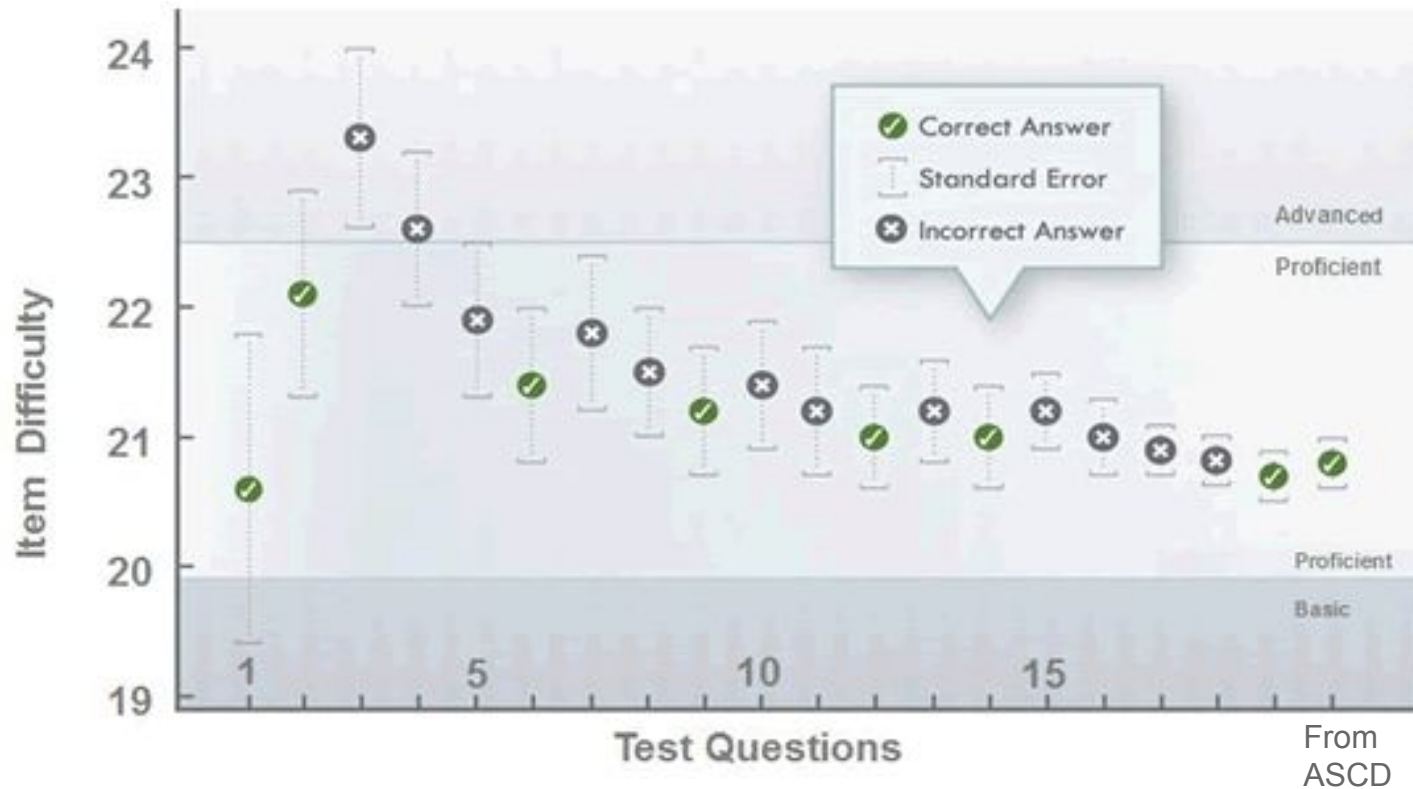
- ❑ Math and Reading

- ❑ Administered to students in Grades 3-8

MAP: Attributes

- ❑ Computer Adaptive Test
- ❑ Untimed Test
- ❑ Large Norming Sample
- ❑ Interim Assessment
- ❑ Measures Growth and Achievement
- ❑ Provides Real Time Feedback
- ❑ Aligned to Standards
- ❑ User Friendly

Computer Adaptive Test



RIT Scores

Overall Numerical Scale Score for MAP

Rasch Unit = “RIT”

This score is used to measure a student’s achievement level at different times of the school year and compute growth.

Think of this like marking height on a growth chart. You can tell how tall your child is at various points in time and how much they have grown between one time and another.

Achievement versus Growth

Achievement

- ❖ Indicates an instructional level
- ❖ *Represented by RIT score and national percentile*

Growth

- ❖ Change in student achievement over time
- ❖ *MAP compares similar performing students*

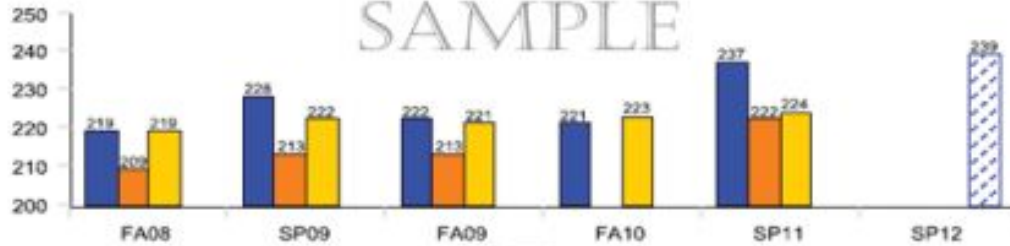
Reading the MAP Student Progress Report

National Percentile Rank

Reading

CHART

SAMPLE



1 Student RIT

2 District Grade Level Mean RIT

3 Norm Grade Level Mean RIT

4 Student RIT Projection

5 Reading Goals Performance - Spring 2010-2011

Understanding and Using Literary Texts

HiAvg

Building Vocabulary

High

6 Lexile® Range 1167-1317L

Understanding and Using Informational Texts

HiAvg

14

Term/Year	Grade	RIT (+/- Std Err)	RIT Growth	Growth Projection	Percentile Range
SP11	10	233-237-240			71-79-83
FA10	10	217-221-224			34-44-52
SP10	9	218-222-225			38-48-55
FA09	9	219-222-226			44-52-62
SP09	8	224-228-231	11	4	54-65-72
FA08	8	216-219-222			41-49-57
SP08	7	213-217-220			32-43-51
FA07	7	216-220-223			49-60-68
WI07	6	212-216-219			44-55-63
FA06	6	217-221-224			63-73-79
SP06	5	211-214-218	8	8	46-55-66
FA05	5	204-207-210			41-50-58
SP05	4	203-206-210			40-48-59
FA04	4	200-203-206			51-59-67

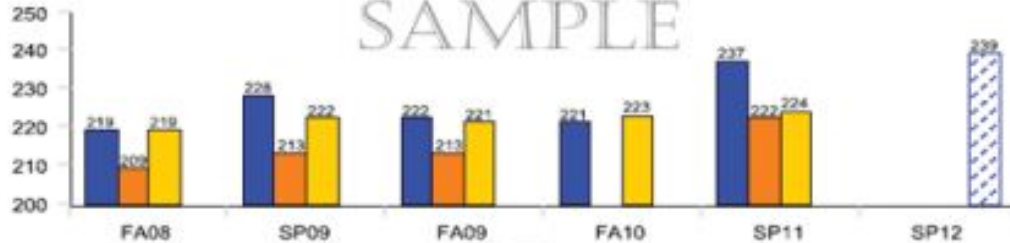
RESULTS TABLE

Reading the MAP Report: Reading Goal Performance

Reading

CHART

SAMPLE



- 1 Student RIT
- 2 District Grade Level Mean RIT
- 3 Norm Grade Level Mean RIT
- 4 Student RIT Projection

5 Reading Goals Performance - Spring 2010-2011

Understanding and Using Literary Texts

Building Vocabulary

6 Lexile® Range 1167-1317L

Understanding and Using Informational Texts

HiAvg

Term/Year	Grade	RIT (+/- Std Err)	RIT Growth	Growth Projection	Percentile Range
SP11	10	233-237-240			71-79-83
FA10	10	217-221-224			34-44-52
SP10	9	218-222-225			38-48-55
FA09	9	219-222-226			44-52-62
SP09	8	224-228-231	11	4	54-65-72
FA08	8	216-219-222			41-49-57
SP08	7	213-217-220			32-43-51
FA07	7	216-220-223			49-60-68
WI07	6	212-216-219			44-55-63
FA06	6	217-221-224			63-73-79
SP06	5	211-214-218	8	8	46-55-66
FA05	5	204-207-210			41-50-58
SP05	4	203-206-210			40-48-59
FA04	4	200-203-206			51-59-67

RESULTS TABLE

Goal Performance will be indicated as Low, Low Avg., Avg. High Avg, or Hi

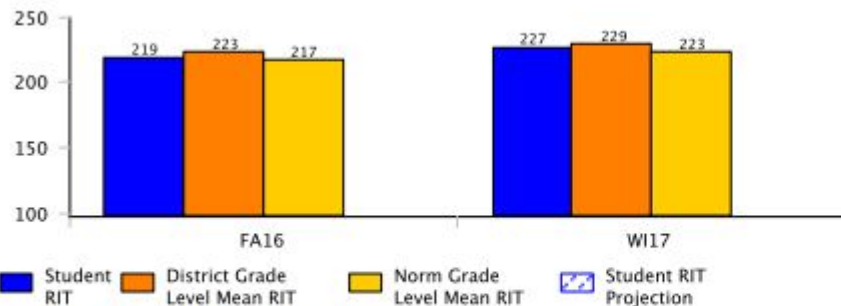
Reading the MAP Report: Results Table

	8	9	10	11	12	13
Term/ Year	Grade	RIT (+/- Std Err)	RIT Growth	Growth Projection	Percentile Range	
SP11	10	233-237-240			71-79-83	
FA10	10	217-221-224			34-44-52	
SP10	9	218-222-225			38-48-55	
FA09	9	219-222-226			44-52-62	
SP09	8	224-228-231	11	4	54-65-72	
FA08	8	216-219-222			41-49-57	
SP08	7	213-217-220			32-43-51	
FA07	7	216-220-223			49-60-68	
WI07	6	212-216-219			44-55-63	
FA06	6	217-221-224			63-73-79	
SP06	5	211-214-218	8	8	46-55-66	
FA05	5	204-207-210			41-50-58	
SP05	4	203-206-210			40-48-59	
FA04	4	200-203-206			51-59-67	

RESULTS TABLE

Example of Student Progress Report

Mathematics



Term/ Year	Grade	RIT (+/- Std Err)	RIT Growth	Growth Projection	Percentile Range
WI17	6	224-227-230	8	6	52-59-67
FA16	6	216-219-222			48-55-62

Mathematics Goals Performance - Winter 2016-2017

Operations and Algebraic Thinking
Geometry

HiAvg
HiAvg

The Real and Complex Number
Systems
Statistics and Probability

Avg
LoAvg

How do teachers and school leaders use MAP?

- ❑ Inform Instruction
- ❑ Focus Teaching Strategies
- ❑ Differentiate Instruction
- ❑ Examine Trends
- ❑ Provide Information for Decision Making
- ❑ Support Student Success

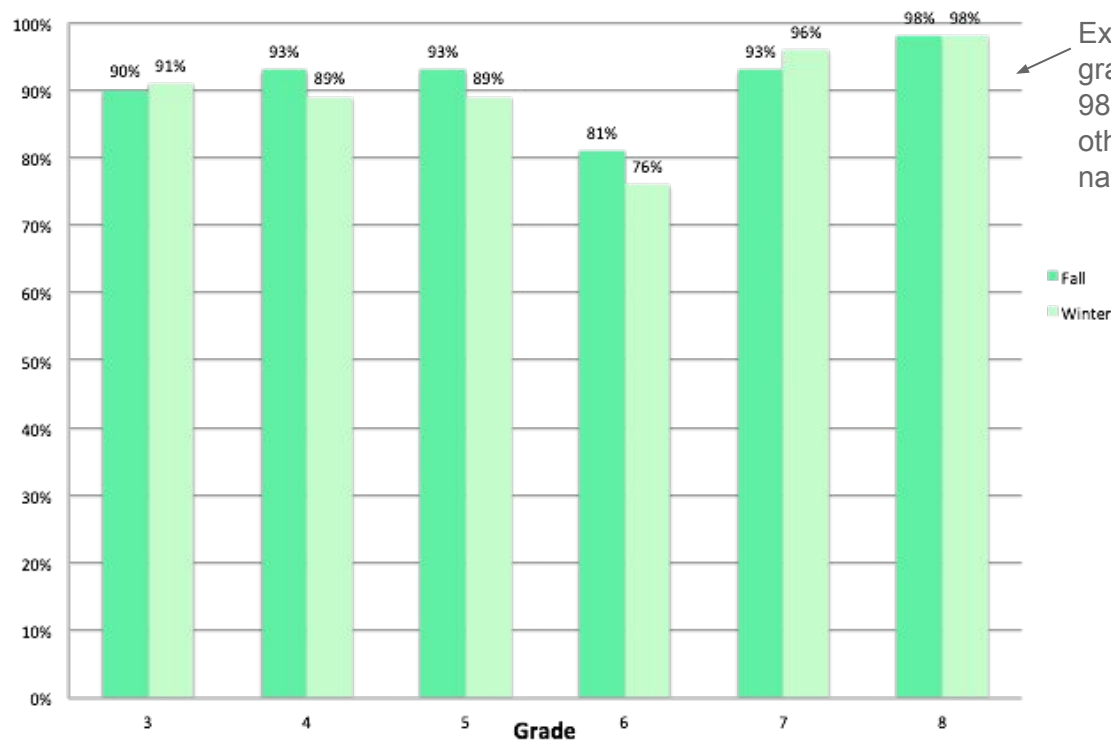
Year 1 MAP Performance 2016-2017



Achievement: Math (National Percentile)

NWEA calculates National Percentile by utilizing their database of over 7000 schools.

National Percentile is calculated by comparing the D36 grade level average (mean) as compared to other school districts.

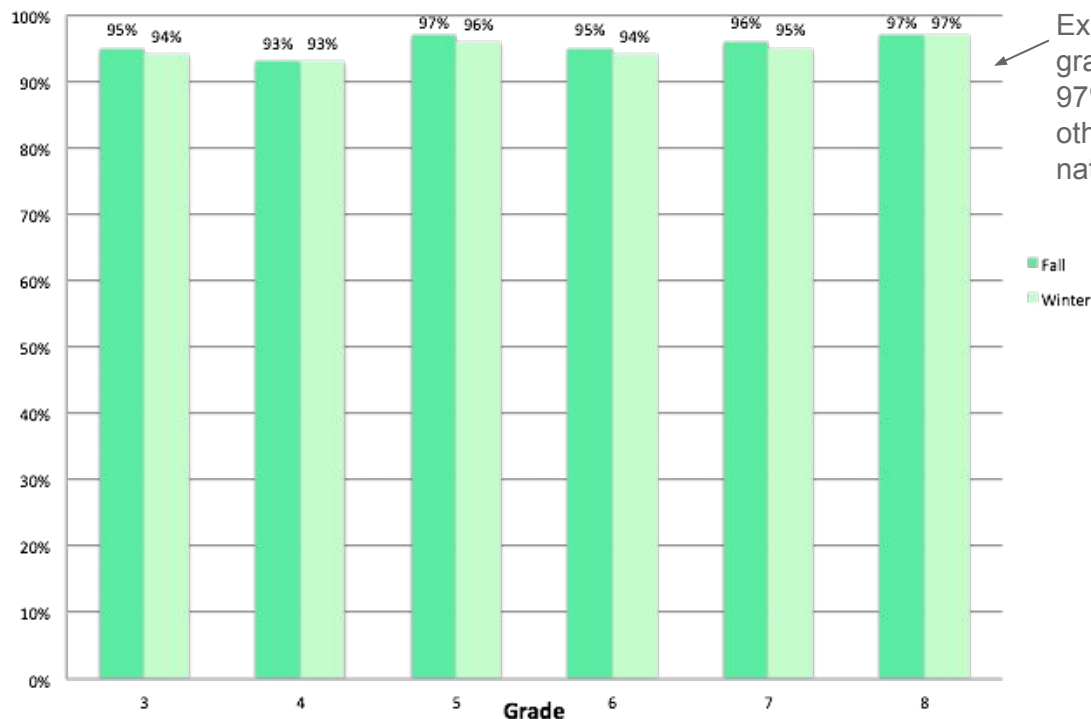


Ex. Washburne 8th graders perform at the 98%ile when compared to other MAP schools nationally.

Achievement: Reading (National Percentile)

NWEA calculates National Percentile by utilizing their database of over 7000 schools.

National Percentile is calculated by comparing the D36 grade level average (mean) as compared to other school districts.



Ex. Washburne 8th graders perform at the 97%ile when compared to other MAP schools nationally.

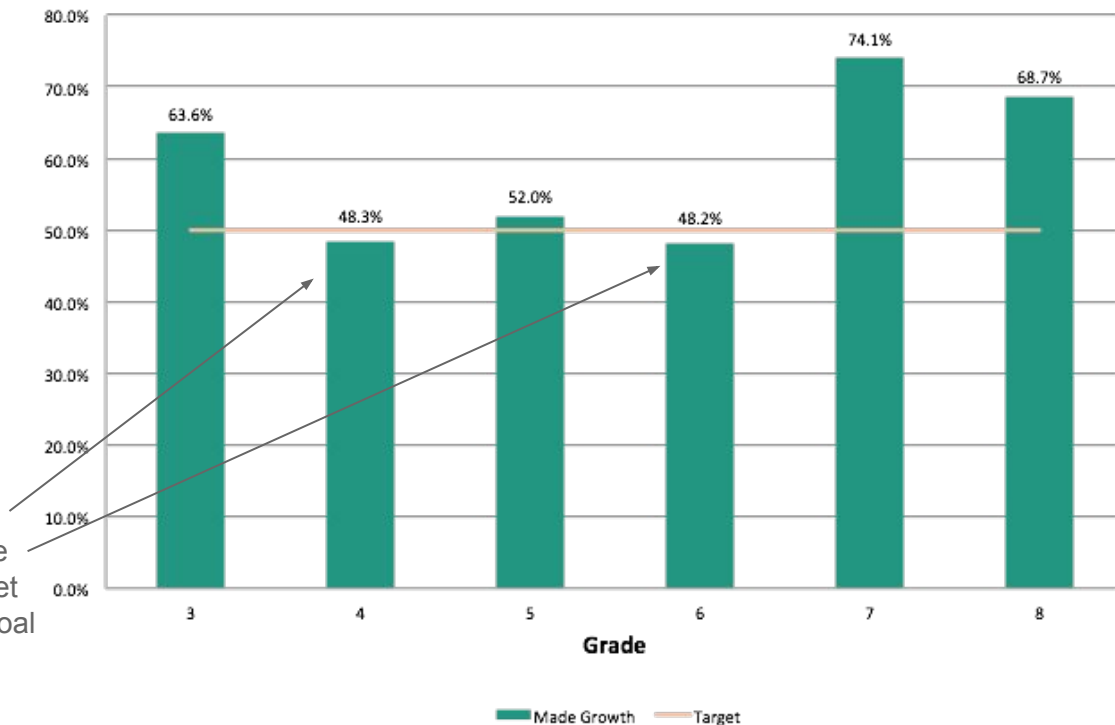
Growth: Math (Percent Meet or Exceed Targets)

Winnetka D36 year one growth target was established based on NWEA recommendation which uses normed criteria.

Growth is relative to other similarly achieving peers.

Ex. Students scoring at the 98%ile in fall are compared to like-achieving peers to determine growth targets.

*Need 3-4 more students to meet growth target goal of 50%.



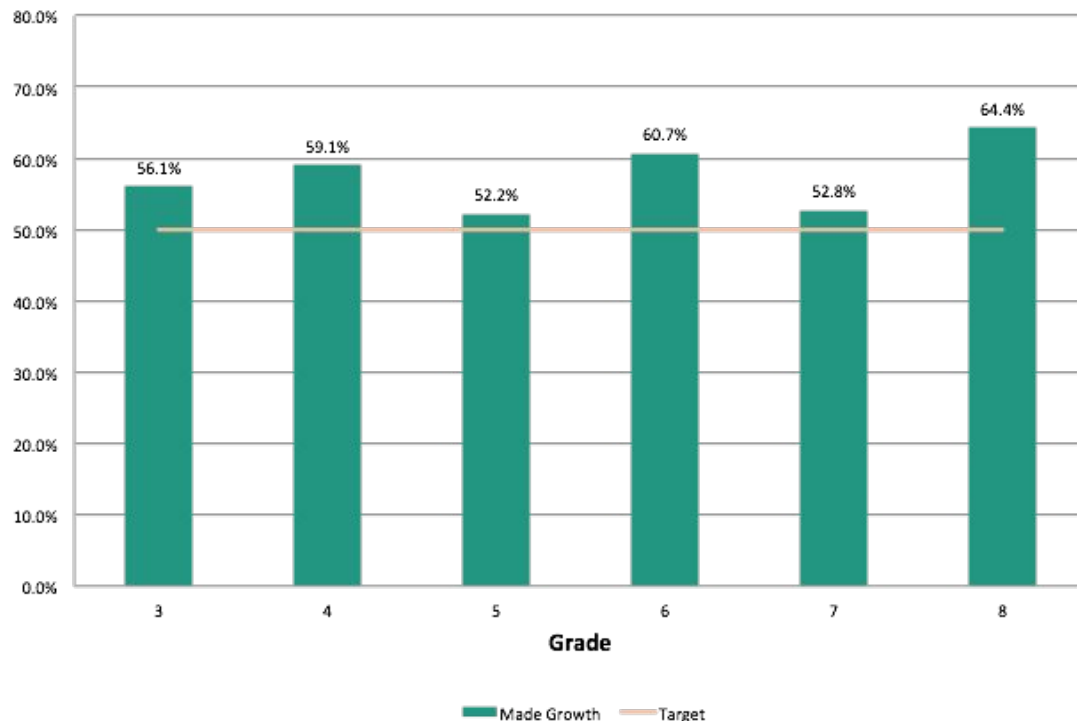
Growth: Reading (Percent Meet or Exceed Targets)

Winnetka D36 year one growth target was established based on NWEA recommendation which uses normed criteria.

Growth is relative to other similarly achieving peers.

Ex. Students scoring at the 98thile in fall are compared to like-achieving peers to determine growth targets.

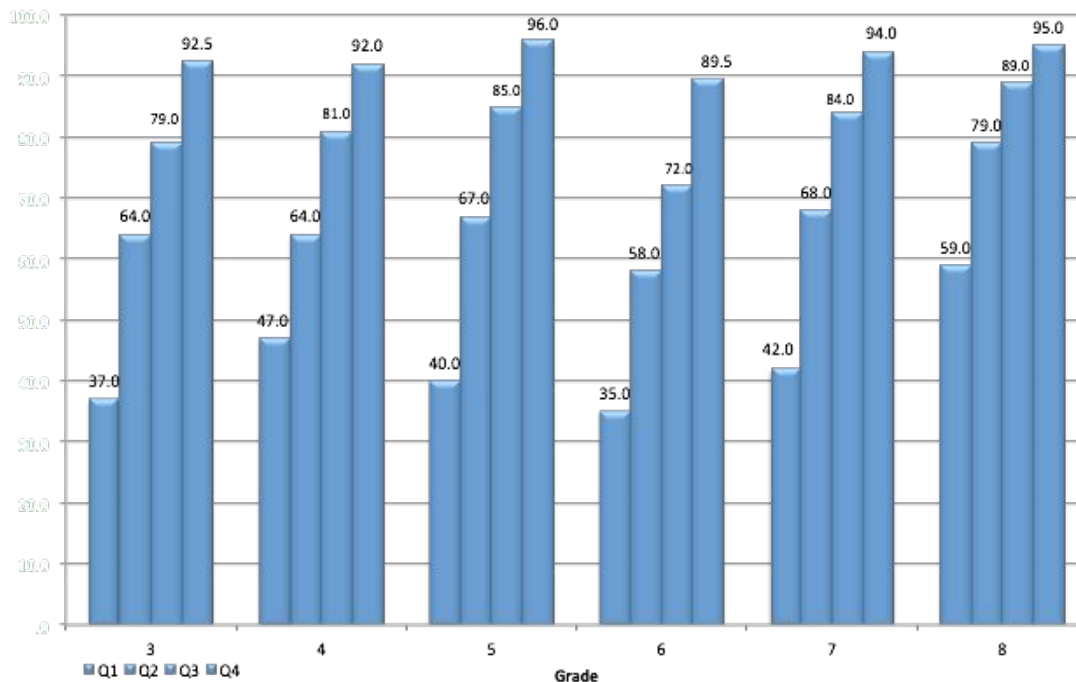
All grade levels met growth target goals for Reading.



Achievement: Math by Quartile

Median National Percentile

Local quartiles for grade level are listed in order (Q1, Q2, Q3, Q4) according to achievement levels.



D36 Local Quartiles
Q1- 25% & below
Q2- 26-50%
Q3- 51-75%
Q4- 76% & above

Growth

Growth Targets Met

Dark Green: More than 60% met growth targets

Light Green: 50% - 60% met growth targets

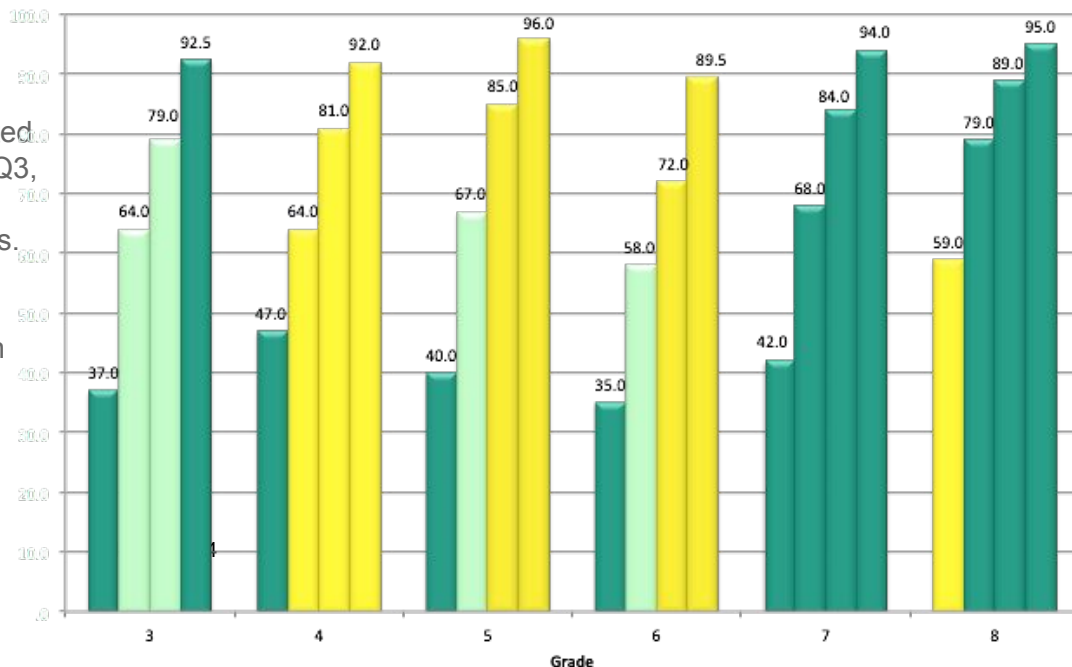
Yellow: Less than 50% met growth targets

Growth + Achievement: Math by Quartile

Growth Targets Met + Median National Percentile

Local quartiles for grade level are listed in order (Q1, Q2, Q3, Q4) according to achievement levels.

16 of 24 quartile groups met growth target (~66%).



Dark Green: More than 60% met growth targets

Light Green: 50% - 60% met growth targets

Yellow: Less than 50% met growth targets

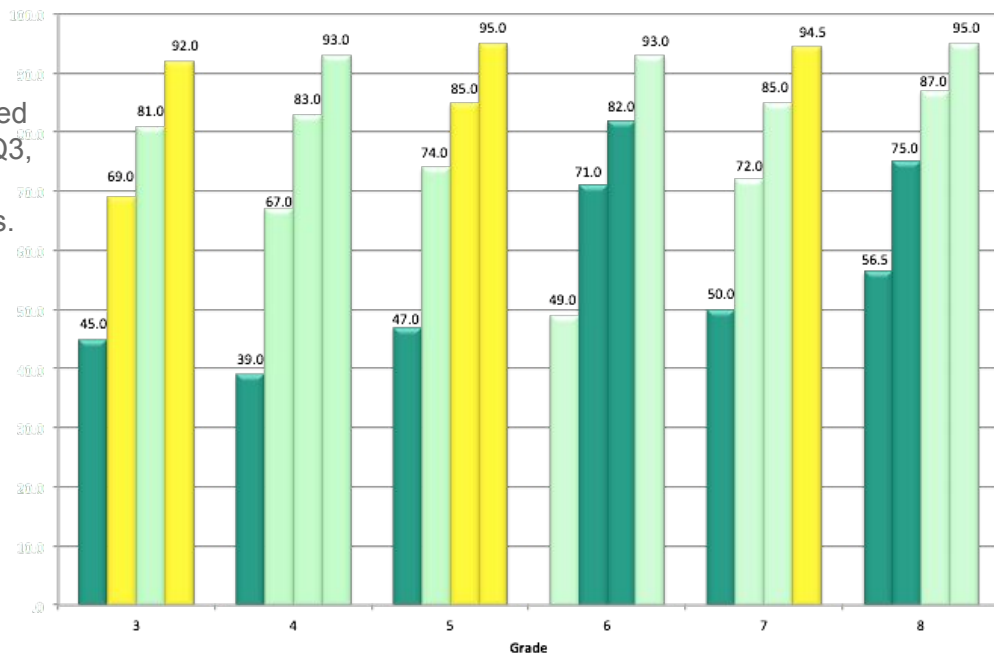
Local (D36) Quartiles defined by achievement
 Q1 - 25% below Q2 - 26-50% Q3 - 51-75% Q4 - 76%+

Growth + Achievement: Reading by Quartile

Growth Targets Met + Median National Percentile

Local quartiles for grade level are listed in order (Q1, Q2, Q3, Q4) according to achievement levels.

19 of 24 quartile groups met growth target (~80%).



Dark Green: More than 60% met growth targets

Light Green: 50% - 60% met growth targets

Yellow: Less than 50% met growth targets

Local (D36) Quartiles defined by achievement

Q1 - 25% below Q2 - 26-50% Q3 - 51-75%ile Q4 - 76%+

Significant Differences in Performance

Subgroup	Significance $p < 0.05$ (Fall & Winter)	Content Area
Gender (Achievement)	Grades 3,6,7 Boys > Girls Grade 8 Girls > Boys	Math Reading
Gender (Growth)	None	None
IEP Status (Growth)	Grade 5 Non-IEP > Students w/ IEP	Math
Achievement Quartiles (Growth)	Grade 3,4 Q1 > All Others Grade 7 Q4 > All Others	Math
	Grade 3 Q1 > All Others	Reading
Elementary Schools (Achievement)	Grade 3 GR > CI None	Math Reading
Elementary Schools (Growth)	None Grade 3 HW > CI	Math Reading (Not Replicated with TC Data)

Content Specific Reporting from NWEA

Strong Relative Performance Indicated

- ❑ 4th Grade Math: Numbers and Operations
- ❑ 6th Grade Math: Real and Complex Number System

Possible Area(s) of Concern

- ❑ 4th Grade Math: Geometry

**Reading did not indicate any areas of relative strength or concern*



Key Takeaways - Year 1 Implementation MAP

- ❑ Achievement in Reading and Math for D36 learners typically at or above the 90%ile nationally
- ❑ Growth goal was met in 10 of 12 data sets (83%)
- ❑ Students with IEP demonstrate comparable growth to students without an IEP
- ❑ Grade 3 - strong achievement
- ❑ Grade 6 - improved Reading performance
- ❑ Grade 5 - strong achievement in top quartiles; needs attention to growth
- ❑ Grade 8 - strong growth and achieved at 97%ile in Reading and 98%ile in Math nationally

Q & A

