



Collins Aerospace

An **RTX** Business

ARINCDirectSM Calendar Exchange

Flight Logging and NextGen Flight Planning Integration Release Notes – October 2023

Collins Aerospace and ARINCDirect are committed to continuous improvement of our products and services to the aviation community. Release Notes are provided to inform about new and modified features and any bug fixes. As always, we encourage your feedback. For questions or concerns, please contact us at 1-866-321-6060 (International: +1 410-266-2266) or email flightops@arinc.com.

NOTICE

INFORMATION SUBJECT TO EXPORT LAWS

This document does not contain any export controlled technical data per Export Administration Regulations EAR99.

DOCUMENT PROPERTY RIGHTS NOTIFICATION (DPRN)

This document is the property of Collins Aerospace and contains confidential and/or proprietary information. You may not possess, use, copy or disclose this document and any information in it, for any purpose, including without limitation, to design, manufacture or repair parts, or obtain any government approval to do so, without Collins Aerospace's express written permissions. Neither receipt nor possession of this document alone, from any source, constitutes such permission. Possession, use, copying or disclosure by anyone without Collins Aerospace's express written permission is not authorized and may result in criminal and/or civil liability.

DISCLAIMER

All information in this document (or file) is provided "as is", with no guarantee of completeness, accuracy, timeliness or of the results obtained from the use of this information, and without warranty of any kind, express or implied, including, but not limited to warranties of performance, merchantability and fitness for a particular purpose.

All marks contained herein are the property of their respective owners.
Some content may be copyrighted by 3rd parties and is used with permission.

PRINTED COPIES OF THIS DOCUMENT ARE UNCONTROLLED

1. Flight Logging and NextGen Flight Planning Integration

The Izon Calendar Exchange Application has two new features – **NextGen Flight Planning Integration** and **Flight Logging**!

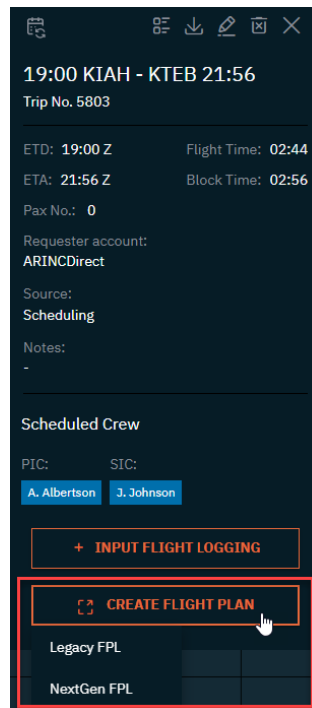
Calendar Exchange can now seamlessly integrate with both our Legacy and NextGen flight planning solutions. Users have the option to launch NextGen Flight Planning directly from Calendar Exchange.

Flight Logging allows users to quickly input post flight OOOI times and crew times electronically. Flight Logging, along with the Tasks and Services and Timeline Manager features, are all included in the Scheduling Bundle.

Note: Flight Logging requires the Scheduling Bundle. For more information, please contact your sales representative.

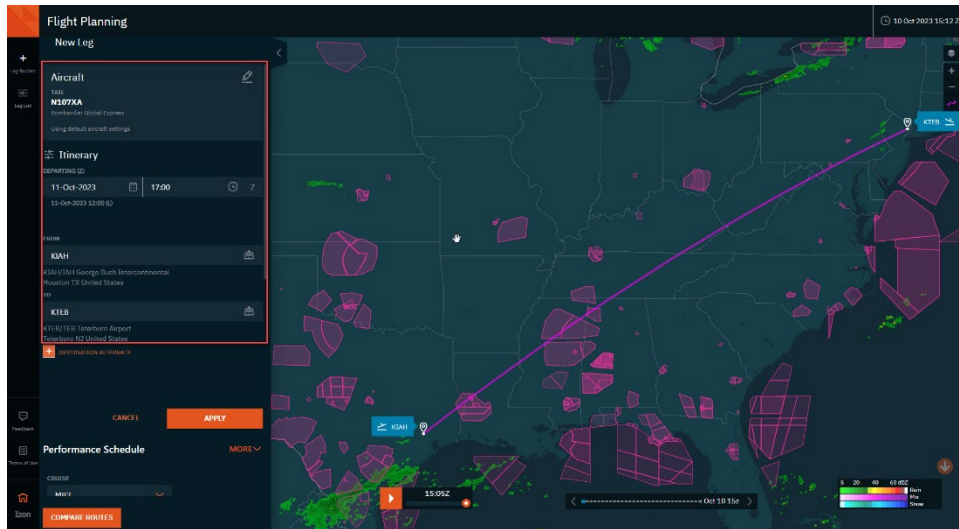
2. Calendar Exchange Integration with NextGen Flight Planning

Within **Calendar Exchange** or **Timeline Manager**, you can access **Flight Planning** by selecting the leg of an aircraft with an active Flight Planning subscription. Within the leg, select the Create Flight Plan button at the bottom of the leg menu. You can choose to launch Legacy or NextGen Flight Planning.

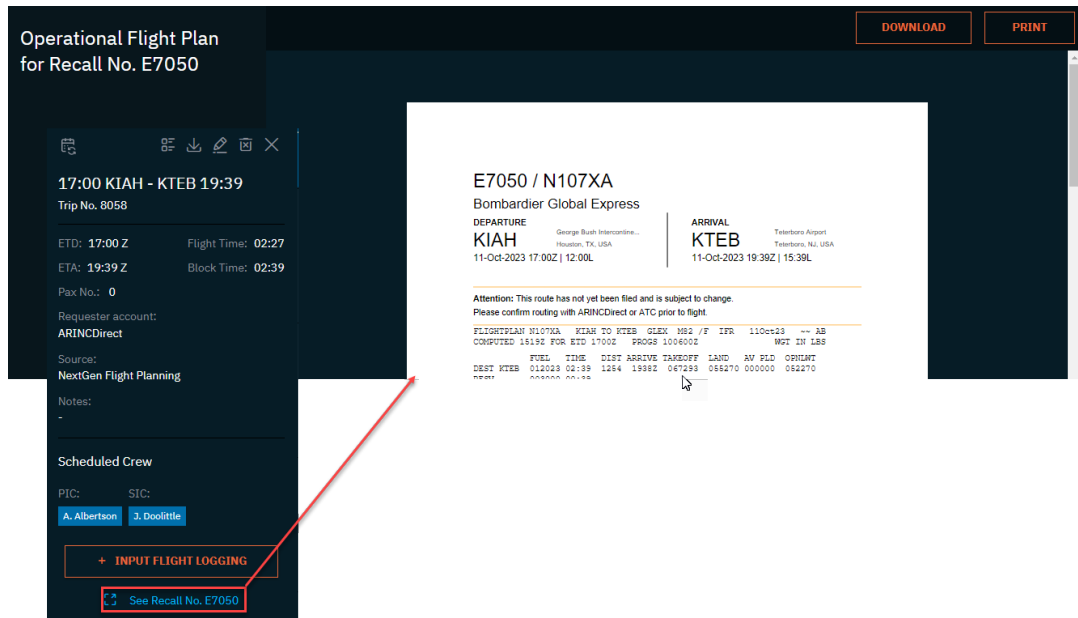


Upon choosing NextGen FPL, Calendar Exchange will launch NextGen Flight Planning and populate the following fields from the trip leg data: Tail, Departure Airport, Destination Airport, and ETD (in Zulu).

Note: Integration between Calendar Exchange and our legacy Flight Planning tool is already available. The addition of NextGen Flight Planning integration provides the option to pick the flight planning tool that suites your needs.



When a flight plan has been created, you can launch the flight plan document viewer from within a leg by selecting the recall number.

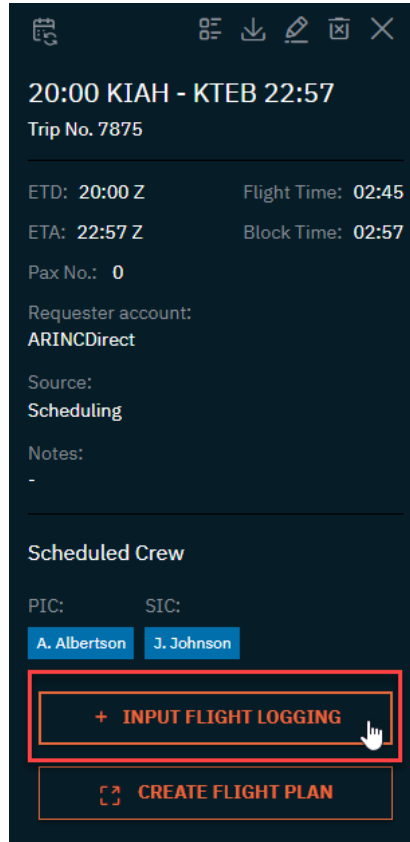


Legs created and saved in NextGen Flight Planning will automatically flow into Calendar Exchange. Within the leg menu the Source will indicate NextGen Flight Planning.

The screenshot shows a mobile application interface for flight management. At the top, there are navigation icons: a calendar, a list, a download arrow, an edit pencil, a trash can, and a close 'X'. Below these is a flight summary: a red warning triangle icon, the flight number '19:00 KTEB - KIAH 22:11', and 'Trip No. 8061'. The flight details section includes: ETD: 19:00 Z, Flight Time: 02:59; ETA: 22:11 Z, Block Time: 03:11; Pax No.: 0; and Requester account: -. The 'Source:' field is highlighted with a red box and contains the text 'NextGen Flight Planning'. Below this is the 'Notes:' field, which is empty. The 'Scheduled Crew' section is also empty. At the bottom, there is a button labeled '+ INPUT FLIGHT LOGGING' and a link 'See Recall No. E7056' with a refresh icon.

3. Inputting Flight Log Data

Within **Calendar Exchange** or **Timeline Manager**, you can access **Flight Logging** by selecting a leg. Within the leg, select the Input Flight Logging button at the bottom of the leg menu.



Within the **Flight Logging** window, you can enter the actual Out, Off, On, In (OOOI) dates and times. When times are entered the actual flight time and block time will be displayed below as well as PIC and SIC duty and flight times.

FLIGHT LOG
N106XA - Trip No 7875 - Leg 9197

	Scheduled ZULU	Scheduled LCL	Scheduled ZULU	ACTUAL TIME	
OUT	07-Oct-2023	14:54	19:54	07-Oct-2023	20:02 Z
OFF	07-Oct-2023	15:00	20:00	07-Oct-2023	20:08 Z
ON	07-Oct-2023	18:57	22:57	07-Oct-2023	23:05 Z
IN	07-Oct-2023	19:03	23:03	07-Oct-2023	23:08 Z

FLIGHT TIME: 02:57 BLOCK TIME: 03:06
Note: Flight time and Block time is calculated based on actual time

Verified above (OUT, OFF, ON, IN)

The “Verified above” check box allows you to indicate that the OOOI times were confirmed to be accurate.

ACTUAL TIME		
07-Oct-2023	20:02	Z
07-Oct-2023	20:08	Z
07-Oct-2023	23:05	Z
07-Oct-2023	23:08	Z

Verified above (OUT, OFF, ON, IN)

You can enter Flight Duty, Flight and Instrument Times, Take-Off and Landings for the assigned PIC and SIC.

A. Albertson
RESET

FLIGHT DUTY

DUTY ON: 07 Oct 2023 18:30 Z DUTY OFF: 07 Oct 2023 23:40 Z

FLIGHT TIMES

TOTAL: 02:57

PF: 02:57 PNF: 01:00:00 NIGHT: 01:00:00

INSTRUMENT

ACTUAL: 01:00:00 SIM: 01:00:00 APP: 1 EYE/HUD: 0 HOLD: 0 TRACK: 0

TAKE-OFF AND LANDINGS

DAY TO: 1 DAY LND: 1 NIGHT TO: 0 NIGHT LND: 0

J. Johnson
RESET

FLIGHT DUTY

DUTY ON: 07 Oct 2023 18:30 Z DUTY OFF: 07 Oct 2023 23:40 Z

FLIGHT TIMES

TOTAL: 02:57

PF: 01:00:00 PNF: 02:57 NIGHT: 01:00:00

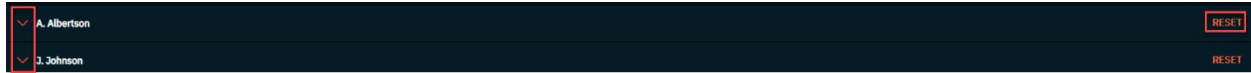
INSTRUMENT

ACTUAL: 01:00:00 SIM: 01:00:00 APP: 0 EYE/HUD: 0 HOLD: 0 TRACK: 0

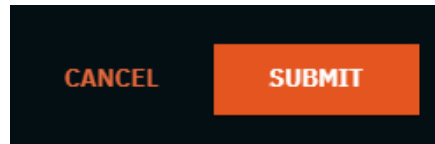
TAKE-OFF AND LANDINGS

DAY TO: 0 DAY LND: 0 NIGHT TO: 0 NIGHT LND: 0

The PIC and SIC times are expanded to display all available input fields. Each may be collapsed or expanded individually. The Reset option allows you to clear all entries for the selected pilot.

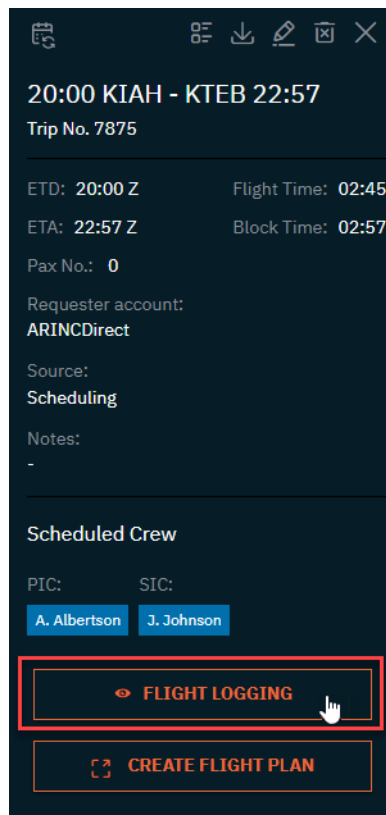


When the post flight data entry is complete, you can select Submit at the bottom right of the **Flight Logging** window to save the record.



4. Viewing Completed Leg Flight Log Data

Within **Calendar Exchange** or **Timeline Manager**, you can access the completed **Flight Log** by selecting a leg. Within the leg, select the Flight Logging button at the bottom of the leg menu.



Within the **Flight Logging** window, you can view the completed flight log or edit it by selecting the pencil icon at the top right of the window.

	Scheduled ZULU	Scheduled LCL	Scheduled ZULU	ACTUAL TIME
DUJ	07-Oct-2023	14:54	19:54	07-Oct-2023 20:02 Z
OFF	07-Oct-2023	15:00	20:00	07-Oct-2023 20:08 Z
ON	07-Oct-2023	18:57	22:57	07-Oct-2023 23:05 Z
IN	07-Oct-2023	19:03	23:03	07-Oct-2023 23:08 Z

FLIGHT TIME: 02:57 BOOK TIME: 03:06
Note: Flight time and Book time is calculated based on actual time.

Verified above (DUJ, OFF, ON, IN)

A. Albertson
 J. Johnson

5. Viewing Crew Flight Log Data

Within **Calendar Exchange** there is a new Crew Logging Icon located on the left tool bar.

Calendar Exchange		October 2023	<< < TODAY > >>
Aircraft		Sat 7	Sun 8
Gulfstream G-IV 1234569 KANP 12 pax			
N106XA Gulfstream G-V 987654SN KBWI - pax	20:00 KIAH - KTEB 22:57 Trip No. 7875 ARINCDirect Pax: 0 A. Albertson J. Johnson	03:00 KTEB - KIAH 06:21 Trip No. 7875 ARINCDirect Pax: 0 A. Albertson J. Johnson	

The Crew Logging feature allows you to quickly access any crewmember's log data. The Log Overview tab displays a YTD, 90-day, 6-month, and 12-month summary of their total flight times.

Crew Logging

LOG OVERVIEW LOG DETAILS

	Flight Times							Instrument					Landings		
	TOTAL	PIC	SIC	PF	PNF	NIGHT	ACT	SIM	APP	EVS/HUD	Hold	TRCK	Day TO	Day LND	Nigh
YTD	02:45	02:45	00:00	04:00	04:00	04:00	04:00	04:00	40	40	40	40	40	40	40
Prev 90 days	02:45	02:45	00:00	04:00	04:00	04:00	04:00	04:00	40	40	40	40	40	40	40
Prev 6 months	02:45	02:45	00:00	04:00	04:00	04:00	04:00	04:00	40	40	40	40	40	40	40
Prev 12 months	02:45	02:45	00:00	04:00	04:00	04:00	04:00	04:00	40	40	40	40	40	40	40

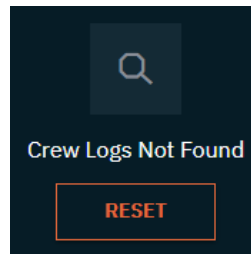
The Log Details tab displays each individual flight log entry for the selected crewmember. The date of the flight, aircraft type, and flight times are all displayed within Log Details.

Crew Logging

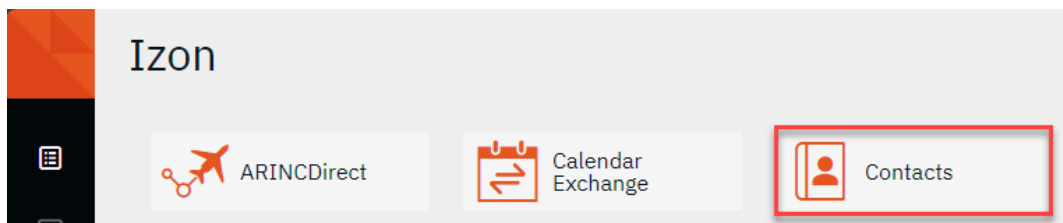
LOG OVERVIEW LOG DETAILS

DATE	TYPE	DEPT	APR	Flight Times							Instrument					
				TOTAL	PIC	SIC	PF	PNF	NIGHT	ACT	SIM	APP	EVS/HUD	Hold	TRCK	
30-Sep-2023	Cessna CitationX+	RJFK	RJAA	01:45	01:45	00:00	00:00	00:00	00:00	00:00	0	0	1	0	0	0
30-Sep-2023	Bombardier Global Express	KIAH	KTEB	00:00	00:00	00:00	00:00	00:00	00:00	00:00	0	0	0	0	0	0
30-Sep-2023	Cessna Citation Excel	LPPT	LIRA	01:00	01:00	00:00	01:00	00:00	00:00	00:00	0	0	1	0	0	0
05-Oct-2023	Cessna Citation Excel	VOMM	VOBG	01:00	01:00	00:00	02:00	02:00	02:00	02:00	120	120	20	20	20	20
05-Oct-2023	Cessna Citation Excel	VOMM	VOBG	00:00	00:00	00:00	02:00	02:00	02:00	02:00	120	120	20	20	20	20

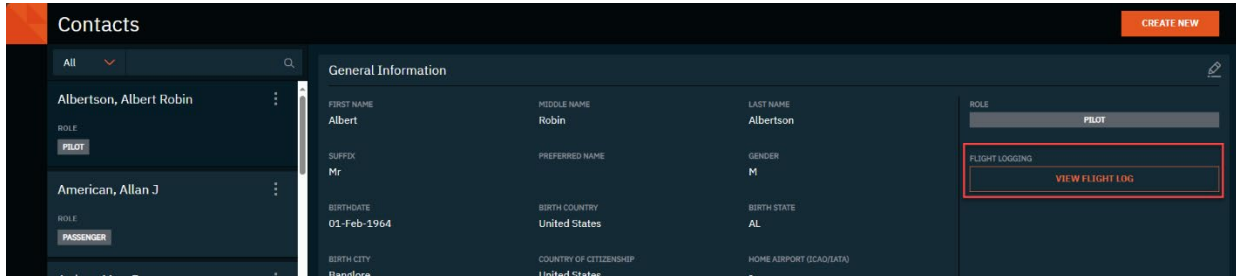
If a selected crewmember does not have any flight log data recorded, a “Crew Logs Not Found” message will be displayed.



Crew Flight Log data is also accessible from within the **Izon Contacts App**.



Within the **Contacts App**, a new View Flight Log Button is available to view the Log Overview and Log Details.



As always, we encourage your feedback. If you have any questions or concerns, please contact us at 1-866-321-6060 (International: +1 410-266-2266) or email flightops@arinc.com.