



Collins Aerospace

An **RTX** Business

ARINCDirectSM Flight Planning

Custom Route – Rubberbanding October 2024

Collins Aerospace and ARINCDirect are committed to the continuous improvement of our products and services to the aviation community. Release Notes are provided to inform about new and modified features and any bug fixes. As always, we encourage your feedback. For questions or concerns, please contact us at 1-866-321-6060 (International: +1 410-266-2266) or email ad-flightops@collins.com.

NOTICE

INFORMATION SUBJECT TO EXPORT LAWS

This document does not contain any export controlled technical data.

DOCUMENT PROPERTY RIGHTS NOTIFICATION (DPRN)

This document is the property of Collins Aerospace and contains confidential and/or proprietary information. You may not possess, use, copy or disclose this document and any information in it, for any purpose, including without limitation, to design, manufacture or repair parts, or obtain any government approval to do so, without Collins Aerospace's express written permissions. Neither receipt nor possession of this document alone, from any source, constitutes such permission. Possession, use, copying or disclosure by anyone without Collins Aerospace's express written permission is not authorized and may result in criminal and/or civil liability.

DISCLAIMER

All information in this document (or file) is provided "as is", with no guarantee of completeness, accuracy, timeliness or of the results obtained from the use of this information, and without warranty of any kind, express or implied, including, but not limited to warranties of performance, merchantability and fitness for a particular purpose.

All marks contained herein are the property of their respective owners.
Some content may be copyrighted by 3rd parties and is used with permission.

PRINTED COPIES OF THIS DOCUMENT ARE UNCONTROLLED

155-2000-009
CAGE CODE: 83S81

PROPRIETARY
INFORMATION

Page 1 of 3

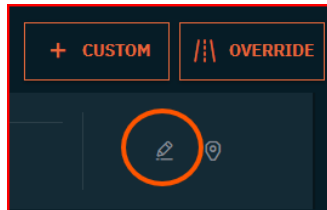
© 2024 Collins Aerospace
All rights reserved.
2551 Riva Road
Annapolis, MD 21401 U.S.A.
+1 (410) 266-2266
arincdirect.com

Introduction

In this release, we have expanded the Custom Route feature with the ability to edit a route via the map, also called 'Rubberbanding.'

Editing a Route via the Map

To edit a route via the map, you can follow the same step as with editing a route via the Custom route Box by selecting the pencil icon on the right side of the route.

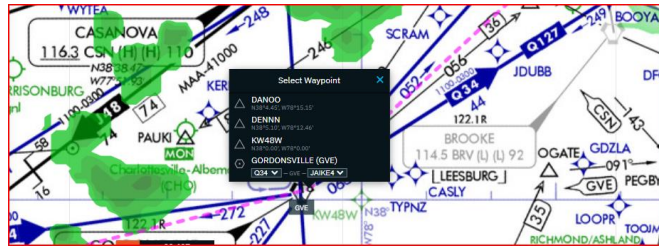


When selecting this icon, the Custom Route Box will open with the existing route from the route pane pre-populated. With this release, this action also provides you the ability to click the route and drag it to a new position. To drag the route, click on the route on the map, move your mouse or finger for a mobile/tablet, to the new position and let go. The new route position is denoted by a dashed line while the original route remains a solid line.



The map will provide a menu with options of nearby points and airways to choose from. Choosing an option will populate the Custom route Box below.

Selecting a waypoint on the map will also provide the ability to delete the waypoint.



When editing is complete, click the green check to save the route or at any time, you can click the red x to cancel the route editing process.

As always, we encourage your feedback. If you have any questions or concerns, please contact us at 1-866-321-6060 (International: +1 410-266-2266) or email ad-flightops@collins.com