



# Collins Aerospace

An **RTX** Business

ARINCDirect<sup>SM</sup>

## NextGen Flight Planning

### Version 1.4.6 Release Notes – September 2023

Collins Aerospace and ARINCDirect are committed to continuous improvement of our products and services to the aviation community. Release Notes are provided to inform about new and modified features and any bug fixes. As always, we encourage your feedback. For questions or concerns, please contact us at 1-866-321-6060 (International: +1 410-266-2266) or email [flightops@arinc.com](mailto:flightops@arinc.com).

#### NOTICE

##### INFORMATION SUBJECT TO EXPORT LAWS

This document does not contain any export controlled technical data per Export Administration Regulations EAR99.

##### DOCUMENT PROPERTY RIGHTS NOTIFICATION (DPRN)

This document is the property of Collins Aerospace and contains confidential and/or proprietary information. You may not possess, use, copy or disclose this document and any information in it, for any purpose, including without limitation, to design, manufacture or repair parts, or obtain any government approval to do so, without Collins Aerospace's express written permissions. Neither receipt nor possession of this document alone, from any source, constitutes such permission. Possession, use, copying or disclosure by anyone without Collins Aerospace's express written permission is not authorized and may result in criminal and/or civil liability

##### DISCLAIMER

All information in this document (or file) is provided "as is", with no guarantee of completeness, accuracy, timeliness or of the results obtained from the use of this information, and without warranty of any kind, express or implied, including, but not limited to warranties of performance, merchantability and fitness for a particular purpose.

All marks contained herein are the property of their respective owners.  
Some content may be copyrighted by 3rd parties and is used with permission.

PRINTED COPIES OF THIS DOCUMENT ARE UNCONTROLLED

## 1. Introduction

The Next Generation Flight Planning application through ARINCDirect is accessible on **Izon**. ([Izon FAQ](#) and [Setup Guide](#)). In this release, we introduce five new features: **Replan** and 4 new map layers **Echo Tops**, **Data Link Communications**, **NAT Tracks**, and **Permit Information**.

## 2. Replan

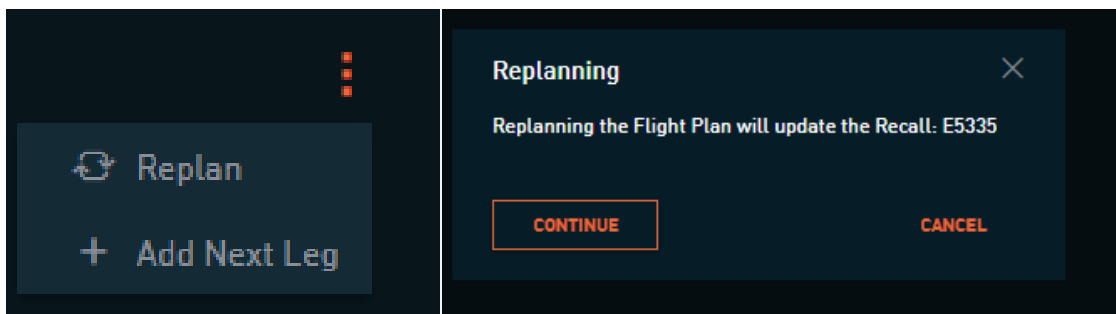
This release introduces the concept of **Replan** of a NextGen flight plan. There are 3 paths in which you can Replan a NextGen Flight Plan: Leg List, Leg Details and immediately after saving a flight plan with a recall number.

### Replan from Leg List

The first is from the **Leg List**. In the **Leg List**, the NextGen Flight Plan is indicated by a recall number included on a leg and **no** present Legacy badge.

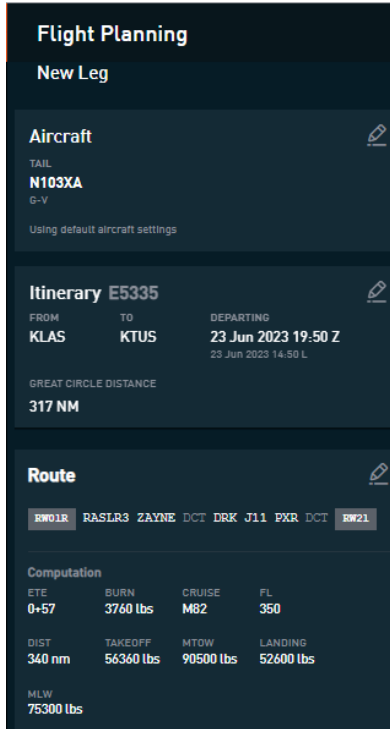
TAIL/FLIGHT ID	RECALL NO.	DEPARTURE	ETD ↓	ARRIVAL
N103XA Gulfstream G-V	E5335	KLAS Las Vegas, NV, United States	Jun 23, 2023 19:50Z 12:50L	KTUS Tucson, AZ, United States
Filing Status: No Request for Filing				

On the right-hand side of the leg, **Replan** can be engaged beneath the three-dot menu. Upon selecting **Replan** you'll be prompted that this process will overwrite the existing recall.

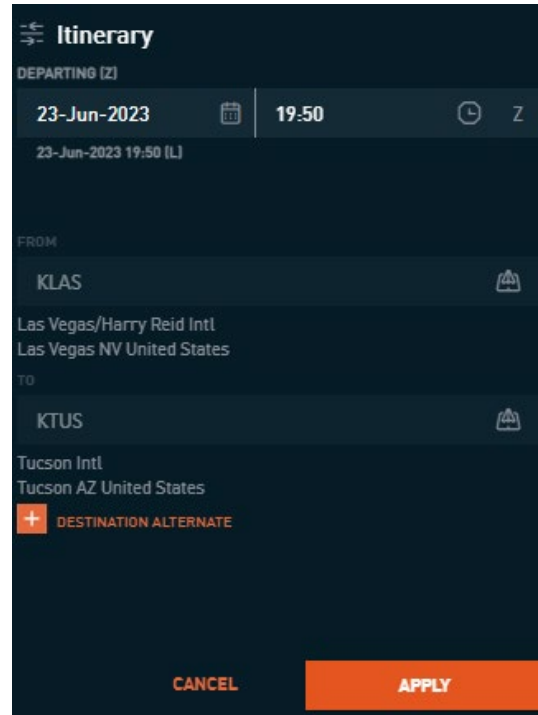
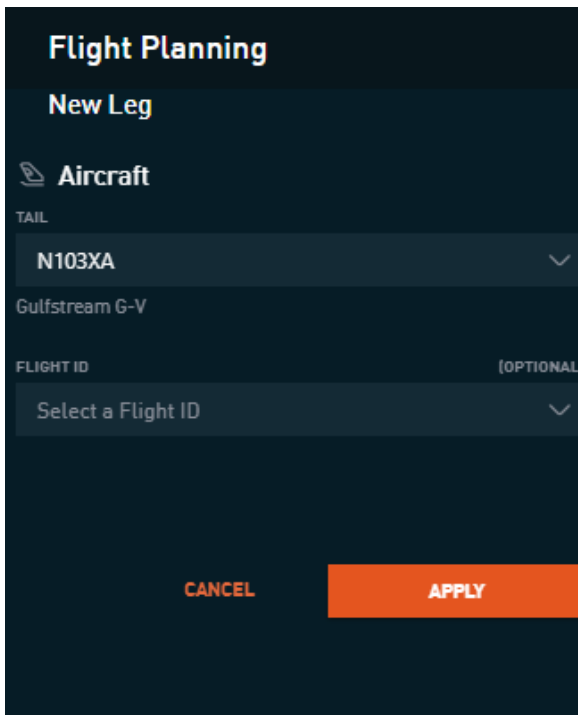


Selecting CONTINUE will present the Leg Builder page depicting editable sections for Aircraft, Itinerary, and Route cards. Select the pencil icon to open sections for edits.

Note: **Replan** restricts the ability to edit the departure or destination airport.

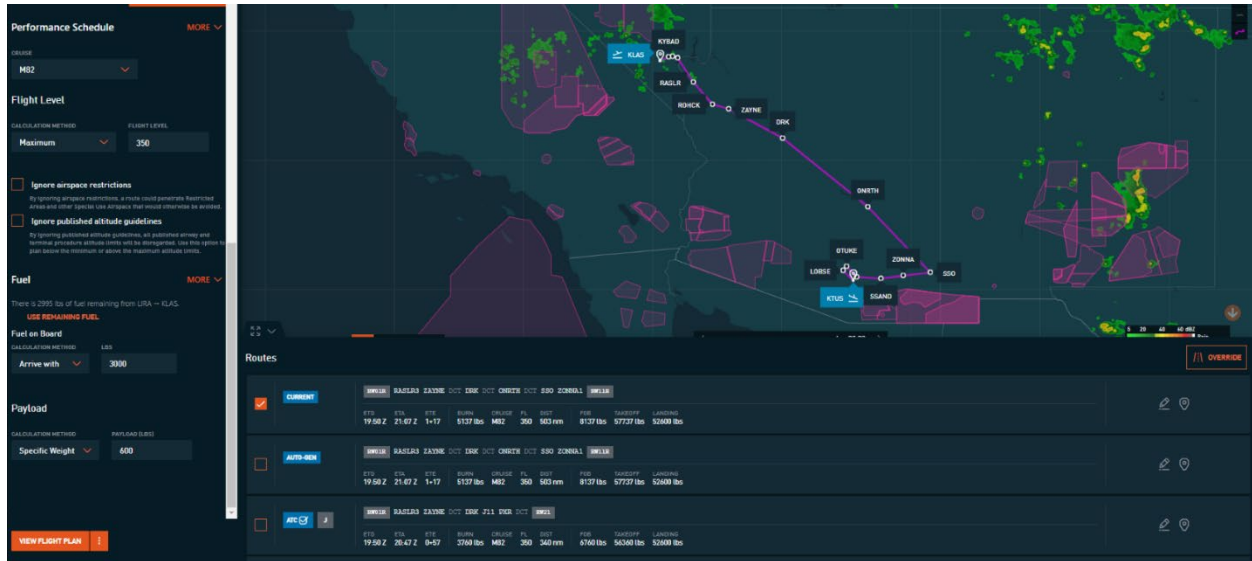


Aircraft and Itinerary sections will present the option to APPLY or CANCEL any changes.



Selecting APPLY will prompt a recalculation, while selecting CANCEL will return you to the card view.

When selecting the Route Card Edit icon, you can adjust any of the following parameters: Performance Schedule, Flight Level, Fuel on Board, Payload, or Route. As with all other parameters, the previous entry or route selection will be populated and remain, unless changed.



Changes to any Aircraft, Itinerary, or Route Section parameters will force a recalculation of the route table options.

Upon changes, the action button at the bottom of the screen will provide the opportunity to **Preview Flight Plan** or **Create Next Leg**.

As with the original computation, selecting the **Preview Flight Plan** button will present the newly computed plan within the Document Viewer with parameter changes incorporated. The option to save the changes will be provided. Clicking on **Save Flight Plan** will overwrite the existing recall number with the new plan. If the Document Viewer is closed without saving, the recall is NOT overwritten.

If no changes were made, then the option will remain as **View Flight Plan**.



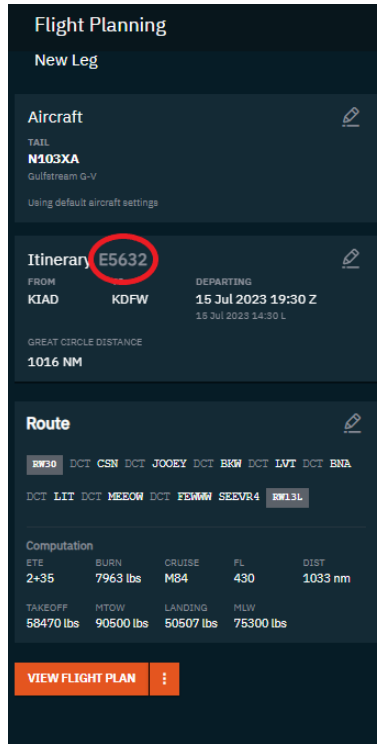
Selecting **View Flight Plan** will navigate to the document viewer with display of the *previously* computed recall.

The second path to replanning a NextGen Flight Plan is from the 3 dot menu beneath the **Leg Details**. To view the **Leg Details**, select the leg while on the Leg List.

The third approach to replan a stored recall is available upon *immediate saving of a computed plan*. When closing a Document Viewer immediately after saving your originally computed plan,

you will be presented the leg builder form with all the previous inputs from your plan still populated. In addition to this, **the recall number is indicated on the interface within the Itinerary section**. The action button remains VIEW FLIGHT PLAN here unless changes are made.

The presence of the recall number in the Itinerary Card is key. It distinguishes that changes made and saved from this page will result in overwriting this recall.



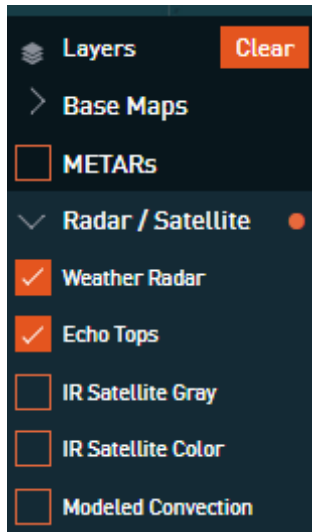
Upon making any changes, the action button for recalculating the route table will appear and the **Preview Flight Plan** button will be provided.

**Note:** At the time of this release, the replan function of the NextGen Flight Plan within the legacy tool remains an option. The feature within this release is specifically providing a Replan of the NextGen Flight Plan on Izon.

### 3. Echo Tops

The **Echo Tops** layer can be found in the Map menu beneath the Radar/Satellite category. This layer is built to accompany the Weather Radar layer, so ensure you have both enabled to gain the full benefit of storm intensity and direction information.

**Note:** **Echo Tops** layer is a snapshot in time of the latest data while the Weather Radar includes animation controls to play back the last hour of radar reflectivity.



When the **Echo Tops** layer is enabled, the bottom right corner of the map will include a legend to provide color-coded insight on the intensity level of the storm ranging from Heavy Rain to Possible Tornado.



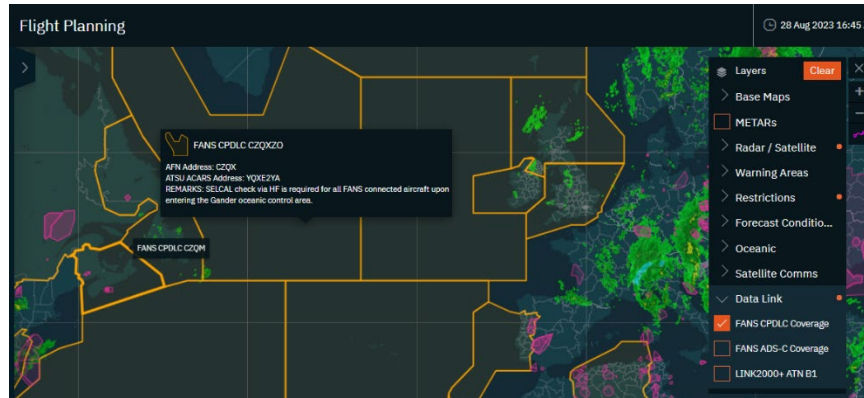
- Heavy Rain: General storm. No hail, rotation, or tornadic vortex signature (TVS) has been detected.
- Severe Hail: Hail has been detected.
- Dangerous Thunderstorm: Mesocyclone – Rotation detected at multiple levels in a storm with wind and/or wind shear.
- Possible Tornado: Tornadic Vortex Signature (TVS) – Indication of a possible tornado. Strong wind shear has been detected in a very small area and is usually associated with a potential tornadic circulation within a thunderstorm.

The **Echo Tops** are labeled with the highest Flight level within the storm and an arrow depicting the direction of movement. Hovering over the **Echo Tops** will provide detailed information regarding type of activity detected, altitude, speed, and direction. The Echo Tops Layer provides data for the U.S. region only.

## 4. Datalink Communications

The Datalink Communications layers can be found in the map menu beneath the new Data Link category. The coverage layers include:

1. FANS CPDLC Coverage
2. FANS ADS-C Coverage
3. LINK2000 + ATN B1



## 5. NAT (North Atlantic) Track Layers

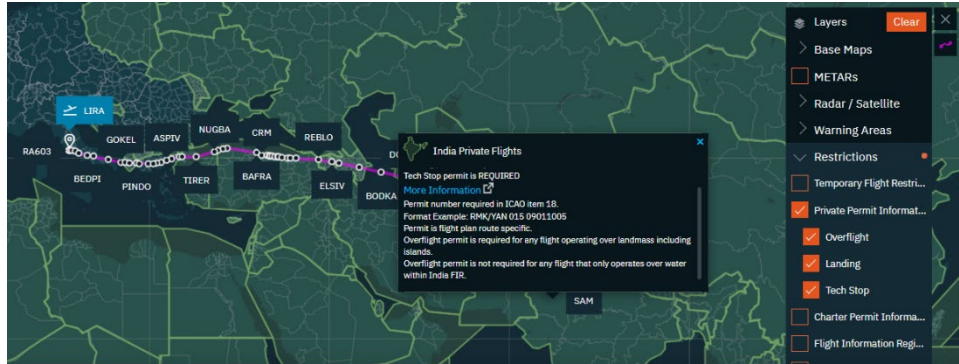
The Eastbound NATs and Westbound NATs which can be enabled one at a time or overlaid together by toggling on both layers will be found within a new layer category: Oceanic.



Hovering over the layer identifier will provide details about the specific NAT Track.

## 6. Permit Information Layers

The Private and Charter Permit information layers offer the ability to toggle on and off a country-based map layer that will at a quick-glance view identify if there are overflight, landing or tech stop permit requirements.



While hovering over the country, users can also view additional information or links to associated sites such as AIP information in the pop-up. **Note:** while requirements may apply to more than one aircraft country of registration, they are based on U.S. registered aircraft.

As always, we encourage your feedback. If you have any questions or concerns, please contact us at 1-866-321-6060 (International: +1 410-266-2266) or email [flightops@arinc.com](mailto:flightops@arinc.com).